

Guide for International Students 2016-17



9

Graduate programs ranked in the top 20 nationally

#70

in the US for World University Rankings



The University of Alabama at Birmingham

- 7 Birmingham, Alabama
- 9 The University of Alabama at Birmingham
- 10 UAB Academic Programs
- 12 UAB Colleges
- 15 INTO The University of Alabama at Birmingham

Undergraduate

- 18 Undergraduate Direct Entry
- 20 Undergraduate Pathway Programs

Graduate

- 28 Graduate Direct Entry
- 30 Graduate Pathway Programs

English Language

- 41 Academic English

Student Life

- 45 Academic Resources
- 47 University Services
- 49 INTO UAB Student Services
- 51 Life on Campus
- 53 Sports and Recreation
- 54 Housing
- 57 Dining
- 59 Internships and Working
- 61 Alumni and Parents

Your Application

- 64 Application Process
- 65 Application
- 69 Affidavit of Support
- 70 Country Scales
- 72 English Waiver Guidelines
- 73 Dates, Tuition and Fees



665+

International students
from 87 countries



#14

Up-and-coming
National University
(U.S. News & World
Report 2016)

At The University of Alabama at Birmingham, we change lives and inspire extraordinary futures.

The University of Alabama at Birmingham pushes the frontiers of education, research and patient care within a bold, collaborative culture that strives to be first, best and one of a kind.

UAB's story is one of remarkable growth in size, quality, reputation and impact. From modest beginnings as an extension center, UAB—which became an autonomous campus in 1969—has grown to offer 149 degree programs in arts and sciences, business, dentistry, education, engineering, health professions, medicine, nursing, optometry and public health.

The university has helped transform Birmingham into a nexus of medicine, business, research and development with a thriving arts and cultural scene, and the 21st-century campus channels all the energies and opportunities of its metropolitan home.

This dynamic living and learning environment inspires and nurtures achievement, social responsibility and enterprise, and UAB embodies a spirit of discovery that advances knowledge, solves real-world problems and drives economic development.

UAB's impact on education, health care and quality of life cuts across classes, cultures and continents into inner-city classrooms, rural clinics and far corners of the globe, and highly diverse faculty and students are embraced as citizens of the world.

The strategic plan, UAB21, is a pledge to prepare our students and community for the challenges of a new knowledge economy: global literacy, biotechnology and biomedical science, energy, transportation, materials engineering, information technology, computing security and entrepreneurship. These goals are fueling record enrollments, attracting exceptional faculty and strengthening community partnerships.

UAB approaches the future with the same audacious vision that led its founders to dream big dreams and commit to this mission: To educate, advance research and discovery, care for the sick, respond to the needs of the Birmingham community and use knowledge to establish Alabama as a progressive economic center that can change the world.



“Increasing access for international students is a key step in growing our economic impact in the region and a step forward in our initiative to bring the world to UAB.”

Ray L. Watts, MD
President
The University of Alabama at Birmingham

275

Size of the UAB campus in acres



Consistently ranked one of the most diverse campuses in the US



Average class size
is 31 students



85%

of UAB's faculty hold a PhD or
terminal degree in their fields

The University of Alabama at Birmingham



1 of 51

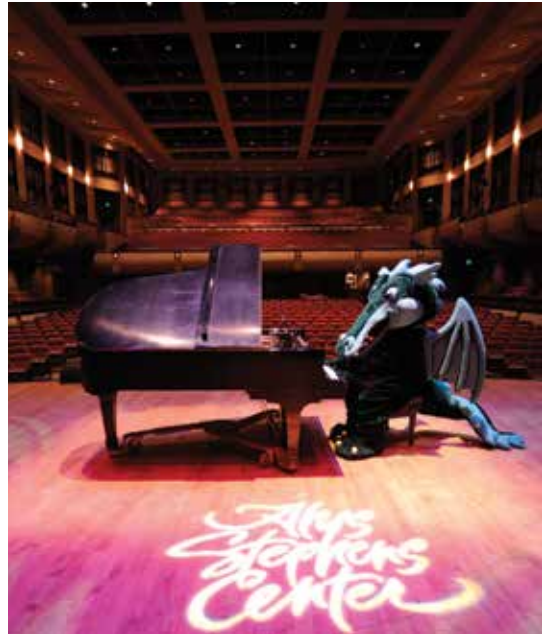
Universities nationally classified as Tier 1 Very High Research Activity and Community Engagement
(Carnegie Foundation for the Advancement of Teaching)

3

Rhodes Scholars
produced at UAB
since 2000



▲ The Birmingham area lends itself to numerous outdoor activities.



▲ Alabama Symphony Orchestra calls UAB's Alys Stephens Center home.



More green space per capita than any other city in the US



▲ The Blazer Express has stops all over campus and surrounding areas.

UAB is the largest employer in the state of Alabama

Birmingham, Alabama

Birmingham is a metropolitan area of more than 1.2 million and a thriving center of medicine, banking, business, and research and development. It borders the historic Five Points and Lakeview districts, with their eclectic mix of restaurants, cafés and live music venues and is minutes from cultural, outdoor and leisure attractions.

The City of Birmingham

Located at the foothills of the Appalachian Mountains at the cross-section of two major railroads, the city was once the primary industrial center of the southern US. At the height of the nation's manufacturing age, the city grew so fast in population, it was called the "Magic City." Today, Birmingham has transformed itself into a medical research, banking and service-based economy, making it one of the nation's most livable cities with a vibrant downtown, a burgeoning loft community, a world-class culinary scene and more green space per capita than any other city in the nation.

Birmingham boasts 99 historic neighborhoods and is often referred to as the cradle of the American Civil Rights Movement. The average high temperature in the city is 18°C; the average low is 10°C. The city is centrally located in the southeast and easily accessible to major hubs in the region.

Cultural Arts District

UAB is home to an exciting Cultural Arts District, anchored by the Alys Stephens Performing Arts Center, which hosts top-quality student productions and performances, the Alabama Symphony Orchestra and legendary acts from all corners of the world.

Across the street is the Abroms-Engel Institute for the Visual Arts, UAB's new home for art instruction and professional galleries, which provides innovative opportunities for education, sharing the outstanding work of faculty and students and attracting acclaimed artists to UAB.

The William Hansell and Susan Mabry Hulseley Center for Arts and Humanities has amenities that include state-of-the-art music-technology labs, recording studios and a recital hall.

Major Employers in Birmingham

- Alabama Power Company
- American Cast Iron Pipe Co. Inc.
- AT&T Telecommunications, Inc.
- BBVA Compass Bank
- Birmingham Board of Education
- Children's Hospital
- Honda Manufacturing of Alabama, LLC
- Mercedes Benz USA International
- Regions Bank
- US Government



Approximately 1 hour from
Atlanta and Dallas by plane



For more information, visit:
intohigher.com/uab

UAB At-a-Glance

Founded: 1969

Enrollment: 18,698

International Students: 665+

Countries Represented: 87

Bachelor's Degrees: 51

Master's/PhD Degrees: 94

Campus Size: 275 acres

Research: \$433M

Faculty: 2,248 full-time, 188 part-time



\$5B

UAB's economic impact on
the state of Alabama



The University of Alabama at Birmingham

UAB is an internationally renowned, public doctoral research university and academic health center and its reach stretches across classes, culture and continents into inner-city classrooms, rural clinics and far corners of the globe.

The University of Alabama at Birmingham

The University of Alabama at Birmingham traces its roots to the 1859 founding of the Medical College of Alabama and the 1936 opening of the Birmingham Extension Center of The University of Alabama.

Today, UAB is a comprehensive urban university with a nationally recognized academic health center. UAB is the only public, four-year degree granting university in the state's most populous metropolitan area. UAB is the biggest research institution in the state of Alabama and the university is the largest employer in Alabama.

The Essence of UAB

"Knowledge that will change your world" captures the essence of UAB and speaks to each facet of the school's mission to educate diverse students, pursue research, deliver the best patient care, serve local and global communities and expand economic development to improve the quality of life in the city of Birmingham and the state of Alabama.

Education and Research

UAB embodies a spirit of discovery that advances knowledge, solves ancient mysteries and real-world problems and drives economic development. Its research faculty ranks among the nation's best funded and is noted for exceptional mentoring and training.

Home to some of the nation's most prestigious centers for the study of cancer, neuroscience, AIDS, diabetes and more, UAB excels at translating medical discoveries in the lab to revolutionary therapies at the bedside and in clinics.

Support for International Students

At UAB, the International Student and Scholar Services team advises international students in matters of immigration, federal and state taxation, and orientation to the Birmingham community. ISSS also serves as a collaborative resource center that facilitates, promotes and strengthens international understanding on campus and throughout the Birmingham community.

Paths to UAB for International Students

Direct Entry

Students who meet the specified language and academic criteria may apply directly to The University of Alabama at Birmingham. Students who do not meet these requirements are encouraged to apply to INTO UAB's Pathway and English language programs.

INTO UAB Pathway Programs

INTO UAB's Undergraduate and Graduate Pathway programs are ideal for international students who may need additional English language and academic preparation before continuing to a degree program at a US university.

INTO UAB English Language Program

INTO UAB's English language program can help students at all levels acquire the English language skills for university study at UAB and attain academic, professional and personal goals.

3.66

average GPA for incoming freshmen

25

average ACT score for freshmen, ranking in the top 21% in the US



UAB Academic Programs

	BACHELOR'S	MASTERS	DOCTORATE
Collat School of Business			
Accounting [BS concentration in Forensic Accounting/Information Technology] [MAc concentration in Internal Audit]	⊙	●	
Business Administration [MBA concentrations in Finance, Health Services, Management Information Systems, Marketing]		⊙	
Economics [BS concentrations in Analysis and Policy, Mathematical Economics, and Philosophy, Politics and Economics]	⊙		
Finance [BS concentrations in Financial Management, Investments and Institutions, Real Estate]	⊙		
Industrial Distribution [BS concentration in Medical Equipment and Supplies Distribution]	⊙		
Information Systems	⊙		
Management [BS concentrations in Business Administration, General Management, Human Resource Management, Operations Management]	⊙		
Management Information Systems [MS concentrations in Information Security, IT Management, Web and Mobile Development]		●	
Marketing [BS concentrations in Marketing Management, Professional Sales Management, Retail Marketing Management, Social Media Marketing]	⊙		
College of Arts and Sciences			
African-American Studies	⊙		
Anthropology	⊙		
Applied Mathematics			●
Art [BFA concentration in Art Studio], [BA concentrations in Art Studio and Art History]	⊙		
Art History		●	
Biology [BS concentrations in Marine Science and Molecular Biology]	⊙	●	●
Chemistry [BS concentrations in Biochemistry, Chemical Education, Forensic Chemistry]	⊙	●	●
Communication Management		●	
Communication Studies [BA concentrations in Communication Management, Mass Communication Broadcasting, Mass Communication Journalism, Mass Communication Public Relations]	⊙		
Computer Forensics and Security Management		●	
Computer and Information Science [BS concentration in Computer Networking]	⊙	⊙	●
Criminal Justice [BS concentrations in Corrections, Policing, Criminology, Forensic Science, Juvenile Justice]	⊙	●	
English [BA concentrations in Creative Writing, Linguistics, Literature, and Professional Writing] [M.A. concentrations in Literature, Composition and Rhetoric, Creative Writing]	⊙	●	
Foreign Language [BA concentrations in French, Spanish]	⊙		
Forensic Science		●	

	BACHELOR'S	MASTERS	DOCTORATE
College of Arts and Science (continued)			
Political Science [BA concentrations in American Government and Political Theory, Comparative Politics and International Relations]	⊙		
History	⊙	●	
International Studies	⊙		
Mathematics [BS concentrations in Applied Math and Scientific Computation, Mathematical Reasoning, Traditional Mathematics]	⊙	●	
Medical Sociology			●
Music [BA concentrations in Music Education Vocal/Choral, Music Education Instrumental, Music Technology]	⊙		
Musical Theatre [BFA]	●		
Neuroscience	⊙		
Philosophy [BA concentration in Philosophy and Political Economy]	⊙		
Physics [BS concentration in Biophysics]	⊙	●	●
Psychology [PhD concentrations in Neuroscience, Developmental Psychology, Medical and Clinical Psychology]	⊙		●
Public Administration		●	
Social Work	⊙		
Sociology [BA concentration in Social Psychology]	⊙	●	
Theatre [BA concentrations in Design and Technology, General Theatre, Pre-Professional Performance]	⊙		
School of Education			
Arts Education [BS concentrations in Music Education Instrumental, Music Education Choral] [MAEd concentrations in Music Education Choral, Music Education Instrumental, Visual Arts]	⊙	●	
Community Health and Human Services [BS concentrations in Community Health, Human Services] [MAEd concentration in Community Health]	⊙	●	
Counseling [Concentrations in Clinical Mental Health, School Counseling]		●	
Early Childhood and Elementary Education	⊙	●	●
Educational Studies Diverse Populations [PhD concentrations in Health Disparities with Diverse Populations, Metropolitan Education Studies, Pedagogical Studies for Diverse Populations]			●
Educational Leadership and Administration [MAEd, EdS, EdD]		●	●
English as a Second Language [MAEd concentrations in English as a Second Language, French and English as a Second Language, Spanish and English as a Second Language, English as Second Language International and Adult track] [EdS concentration in English to Speakers of Other Languages]		●	
Health Education and Health Promotion			●



“There are so many opportunities to get involved at UAB and in Birmingham: research, volunteering, leadership and so much more.”

Marie Michenkova, Czech Republic
Neuroscience major

- ⦿ A Pathway program can lead to this degree and this UAB degree is available through direct entry.
- This UAB degree program is available through direct entry.

Undergraduate Pathway programs may lead to any bachelor's degree listed below.

Graduate Pathway programs leading to master's degrees are listed below in green.

	BACHELOR'S	MASTERS	DOCTORATE		BACHELOR'S	MASTERS	DOCTORATE
School of Education (continued)				School of Health Professions (continued)			
Kinesiology [BS concentrations in Physical Education, Exercise Science and Fitness Leadership] [MS concentrations in Physical Education, Exercise Physiology] [EdS concentration in Physical Education]	⦿	●		Healthcare Quality and Safety		●	
Reading		●		Nuclear Medicine Technology		●	
High School Education [BS concentrations in Biology, Chemistry, English Language Arts, Foreign Language French, Foreign Language Spanish, General Science, General Social Science, Mathematics, Middle School Mathematics, Physics] [MAEd concentrations in Biology, Chemistry, English Language Arts, General Science, General Social Science, History, Mathematics, Physics] [EdS concentrations in Biology, Chemistry, English Language Arts, General Science, General Social Science, History, Mathematics, Physics]	⦿	●		Nutrition Sciences [MS tracks in Dietetic Internship/Clinical, Research, Lifestyle Management and Disease Prevention]		●	●
Special Education [MAEd concentrations in Collaborative Teaching, Early Childhood Special Education, Visual Impairments] [EdS concentrations in Collaborative Teacher Autism Spectrum Disorders, Collaborative Teacher Reading]		●		Occupational Therapy [Programs in Post Professional Occupational Therapy, Post Professional Low Vision Rehabilitation]		●	
School of Engineering				Joint Health Sciences			
Biomedical Engineering [BSME concentrations in Biomaterials and Tissue Engineering, Biomechanics]	⦿	●	●	Biochemistry and Molecular Genetics			●
Civil Engineering [BSCE concentration in Sustainable Engineering Design and Construction] [MSCE specializations in Environmental Engineering, Structural Engineering and Structural Mechanics, Construction Engineering Management, Transportation Engineering]	⦿	⦿	●	Cell Biology			●
Computer Engineering			●	Cellular and Molecular Physiology			●
Electrical Engineering	⦿	⦿		Genetics			●
Interdisciplinary Engineering [PhD tracks in Computational Engineering, Environmental Health and Safety Engineering]			●	Microbiology			●
Masters in Engineering [ME concentration in Design and Commercialization]		⦿		Neurobiology			●
Materials Engineering [BSMTE concentrations in Biomaterials, Metallurgy, Polymer Matrix Composites]	⦿	⦿	●	Pathology			●
Mechanical Engineering	⦿	⦿		Pharmacology and Toxicology			●
School of Health Professions				School of Nursing			
Administrative Health Services [DSc, PhD]			●	Nursing [BSN, MSN, DNP, PhD]		⦿	●
Biomedical and Health Sciences		●		School of Public Health			
Biomedical Sciences	⦿			Biostatistics		●	●
Biotechnology		⦿		Environmental Health Science			●
Clinical Laboratory Science		●		Epidemiology			●
Genetic Counseling		●		Health Education and Promotion			●
Health Administration		●		Public Health [BS concentrations in Environmental Health Sciences, Global Health Studies, Public Health] [MPH concentrations in Accelerated Industrial Hygiene, Biostatistics, Environmental Health, Epidemiology, Fast Track, General Theory and Practice, Health Behavior, Health Care Organization Policy, Health Policy, Industrial Hygiene, Maternal and Child Health Policy/Leadership] [MSPH concentrations in Applied Epidemiology, Clinical and Translational Science, Environmental Health and Toxicology, Industrial Hygiene, Pharmacoepidemiology and Comparative Effectiveness Research, Outcomes Research] [DrPH concentrations in Health Care Organization Policy, Maternal and Child Health, Outcomes Research]	⦿	⦿	●
Health Care Management [BS concentrations in Clinical Manager, General Manager, Long Term Care Administration, Pre-Professional track]	⦿						
Health Informatics [MSHI concentrations in Health Information Management, Data Analytics]		●					

UAB Colleges

Collat School of Business



Programs are accredited by the Association to Advance Collegiate Schools of Business

uab.edu/business

About the School

UAB's Collat School of Business offers an engaging learning environment with classrooms extending well beyond the walls of the UAB campus. The school's unique location allows faculty to integrate the practical experiences of Alabama's leading companies—from Fortune 500 corporations to entrepreneurial startups—into the programs offered.

Students are drawn from a variety of educational backgrounds with diverse life experiences, but as a group, they share a common drive. They are unafraid of sacrifice and are willing to earn their success.

Faculty members at the Collat School of Business are more than just skilled teacher-scholars, they are also deeply experienced professionals, having worked for some of the world's leading companies: Ford, Deloitte, United Airlines, Motorola, Procter & Gamble and US Steel.

Collat School of Business Points of Pride

- Accreditation by AACSB was achieved in 1973 in record time of just two years—never accomplished before or since by any business school in the world.
- The UAB accounting program was among the first 18 accounting programs to receive accreditation by AACSB.
- *U.S. News & World Report* ranks UAB as one of nation's "Best Business Schools."
- *The Princeton Review* reports UAB Collat School of Business as one of the "Best 295 Business Schools" in the US.
- The MBA program is recognized by *U.S. News & World Report* in its 2015 Best Graduate Schools ranking in the top 15% of part-time MBA programs.

School of Engineering



Engineering programs are accredited by the Accreditation Board of Engineering and Technology

uab.edu/engineering

About the School

The UAB School of Engineering is comprised of 1,200 students. Roughly 70% are undergraduate and 30% are graduate students.

Undergraduate students are immediately exposed to the engineering design process as freshmen. Students will participate in design projects all throughout their undergraduate curriculum. There is a dedicated Undergraduate Design Laboratory with computer-controlled milling machines/lathes to provide cutting-edge equipment for students to engage in engineering design.

Engineering Departments

UAB's undergraduate biomedical engineering program is the only one of its kind accredited by the Engineering Accreditation Commission of ABET in Alabama. Other strong areas for undergraduate and graduate education in Engineering include:

- Biomedical Engineering
- Civil, Construction and Environmental Engineering
- Electrical and Computer Engineering
- Materials Science and Engineering
- Mechanical Engineering



College of Arts and Sciences

uab.edu/cas

The distinctive combination of strong academic programs, outstanding teaching and a diverse student body makes the college a unique destination for those seeking excellence in education, research and entrepreneurship.

The 19 CAS departments—home to over 300 faculty and more than 40 baccalaureate, master's, and doctoral degrees—is the largest academic entity at UAB.



School of Education

uab.edu/education

The UAB School of Education is working every day to transform lives and to optimize human potential. The school is known for cutting-edge programs that prepare professionals to serve in a diverse world. Outstanding faculty are not only leaders in their fields, but also excellent mentors and educators who inspire others to grow and to learn. The goal of the program is to make a difference in the lives of students and in the communities they serve.



School of Nursing

uab.edu/nursing

Baccalaureate education at the UAB School of Nursing uses state-of-the-art technologies, simulations and other teaching strategies, to prepare graduates to care for families and individuals of all ages, as well as prepares students to pursue master's and doctoral education.



School of Health Professions

uab.edu/shp

The UAB School of Health Professions is one of the largest health professions schools in the nation with more than 20 innovative programs at the baccalaureate, masters and doctoral degree levels within five departments. The SHP is one of the six schools comprising the world-renowned UAB Academic Health Center where students are exposed to vast resources, state-of-the-art facilities and progressive research during their academic and clinical education.



Honors College

uab.edu/honorscollege

As citizens of a society and members of a global community, Honors College students welcome the responsibility of contributing their knowledge, ideas and service to the greater good. In a world of taking, they give. In a world of conformity, they innovate. New discoveries. New inventions. New thoughts. They are asked, "What's next?" and then figure out how to lead the way.



School of Public Health

soph.uab.edu

Located in the heart of the largest academic health center in the Southeast, the UAB School of Public Health embraces global and local challenges in Alabama and around the world. Creating new knowledge, expanding understanding and refining approaches to improve the health and well-being for populations and individuals the world over is the purpose of the SOPH.



“UAB is a fantastic choice for international students to earn an American degree from a world-ranked university and become a contributing member of our global community.”

Linda Lucas
Provost
The University of Alabama at Birmingham



INTO The University of Alabama at Birmingham

INTO The University of Alabama at Birmingham offers international students all the benefits and experiences of campus life at an American university.

Welcome to INTO UAB

At INTO UAB, international students join a supportive community committed to helping them integrate with ease into American university life while preparing for degree studies. Unique programs help improve academic and English language skills, and helpful faculty and staff ensure students adjust to life in the US.

Students studying in the INTO UAB Center have all the benefits of campus life at an American university. Living and learning in the heart of UAB's campus, international students develop friendships with American and international students and have access to all of the academic, social and cultural resources and activities at The University of Alabama at Birmingham.

The INTO UAB Advantage

- Take the first steps toward earning a US university degree at one of America's leading regional research institutions.
- Study on a safe and friendly campus that offers more than 150 student organizations.
- Live, learn and have fun with students from all across the US and around the globe.
- Enjoy full access to all university resources, services and facilities.
- Learn in small classes taught by highly qualified university instructors.
- Earn academic credits that apply toward UAB degree programs.
- Progress to a UAB degree program upon successful completion of a Pathway program.

Pathway Programs

INTO UAB offers academic Pathway programs designed to prepare students to progress with confidence to UAB undergraduate and graduate degree programs.

English Language Program

Students can take Academic English language courses to help meet their academic, professional and personal goals. Classroom instruction is combined with opportunities to engage with other domestic and international students outside the classroom.

State-of-the-art Facilities

INTO UAB provides the best learning environment for successful students to invest in their education. Highly qualified instructors, facilities with the latest technology, small classes, personalized support, social activities and a welcoming community all contribute to the rich campus experience.

Center Facilities Include:

- Wireless internet throughout the center
- Learning resource center with study materials, books, DVDs and periodicals
- Computer lab
- Multi-purpose classrooms
- Lounge areas for teacher-student meetings, study groups and relaxing
- 24-hour emergency assistance
- Smaller classes that allow for maximum student-teacher interaction
- Close proximity to all campus classrooms, residence halls, recreational facilities and restaurants/dining halls

Key Center Facts

Programs Offered

Undergraduate Pathway Programs

- Business (page 23)
- Computer and Information Science (page 23)
- Engineering (page 24)
- General Studies (page 24)
- Public Health (page 25)
- Science (page 25)

Graduate Pathway Programs

Arts and Sciences

- Biotechnology (page 32)
- Computer and Information Science (page 33)

Business

- Business Administration (page 32)

Engineering

- Civil (page 34)
- Design and Commercialization (page 33)
- Electrical (page 34)
- Materials (page 35)
- Mechanical (page 35)

Public Health

- Public Health (page 36)

English Language Program

- Academic English (page 41)

intohigher.com/uab

UAB offers more than 120 areas of study—and even the freedom to design your own major to suit your talents, interests and plans.



Top 25

in American research institutions
(The Center for Measuring University Performance)

Undergraduate



#149

in the National Universities rankings
(*U.S. News & World Report 2016*)



\$225M

in NIH funding, ranking 10th among
public universities in the US
(*National Institute of Health 2014*)

Undergraduate Direct Entry

UAB provides direct admission to the university for international first-year and transfer students. UAB offers a variety of bachelor's degrees, from arts and sciences to business and engineering.

1. Meet Admission Requirements

Visit the UAB website to review the admission requirements for your degree program. Ensure you meet all academic and language requirements for admission.

- Successful completion of secondary/high school diploma
- Recommended overall GPA 2.5 or higher on a 4.0 scale
- SAT or ACT may be required for some programs or if English is your native language
- To meet the English language requirement, credentials proving English proficiency must be received. These items may include, but are not limited to:
 - TOEFL iBT 77
 - IELTS 6.0 overall with at least 5.5 on each section
 - PTEA 51
- For more information on proving English proficiency, visit: uab.edu/apply

Start Dates for UAB Degree Programs

Semester	Start Date	Undergraduate Application Deadline	Application Fee
Fall 2016	August 29, 2016	June 1, 2016	\$30
Spring 2017	January 9, 2017	November 1, 2016	\$30
Summer 2017	May 8, 2017	March 15, 2017	\$30

2. Understand Admissions

The undergraduate admission process involves an initial review of your application and supporting documents to ensure the application is complete. The completed application and supporting materials are then evaluated to determine admissibility to the program you have selected and an admission decision is made.

For detailed admissions information, visit: uab.edu/apply

3. Submit Your Application

- Apply online or download the application and fill out all required fields
- The application requires a \$30 non-refundable application fee paid by check, money order or credit card

Apply online at: uab.edu/apply



Academic and English Testing Score Codes for UAB

SAT: 1856	TOEFL: 1856	ACT: 0056	IELTS: DIRECT
------------------	--------------------	------------------	----------------------

4. Provide Required Documents

- Official secondary and university transcripts, diplomas and other required credentials must be mailed directly to the The University of Alabama at Birmingham Admissions Office from the registrar or equivalent officer at your secondary school or university in order to be considered official.
- Transcripts, diplomas and other required credentials must be submitted in the original language, accompanied by an official English translation, from the issuing institution. Transcripts must contain all secondary, college or university academic credits, grades and documentation of degrees earned.
- For applicants whose first language is not English or applicants who hold an earned secondary or bachelor's degree from a non-English institution, English language proficiency credentials must be received. For students whose first language is English, official SAT or ACT must be sent directly from testing agency.
- Submit a copy of your passport with your admission application.

All official admission credentials should be sent directly to the UAB Office of International Admissions in a sealed and stamped envelope or electronically directly from the secondary school or institution.

Smolian International House
The University of Alabama at Birmingham
Office of International Admissions
1600 10th Ave South, Floor 2
Birmingham, AL 35294-1280
USA

T: +1 205 934 4686
F: +1 205 934 4685
E: INTOadmissions@uab.edu

5. Finalize Your Plans

If admitted, you will receive a letter of acceptance and an I-20 form. The I-20 form is used to apply for a student visa (F-1) at an American Embassy or Consulate. UAB will communicate with students about the next steps to take.

Submit all required immunizations prior to enrolling at UAB. For more information, visit: uab.edu/studentimmunizations

Additional pre-departure and orientation information is available at: uab.edu/cip/newstudentchecklist

Credit-by-Exam

UAB recognizes the achievement of AP, AS, A level, IB, CLEP, DANTES and GAC. Students may be eligible for advanced academic standing and scholarships, and can receive transfer credit for the exams, courses and subjects taken.

uab.edu/students/academics/transfer-and-other-credits

Third-party Authorization

If a family member or educational counselor is assisting with the completion of your application and you would like for UAB to communicate with them regarding your application, please contact the Admissions office at intoadmissions@uab.edu or +1 858 356 4400.

Key Program Facts**Start Dates**

- Fall: August 29, 2016
- Spring: January 9, 2017
- Summer: May 8, 2017

Application Deadlines

- Fall: June 1, 2016
- Spring: November 1, 2016
- Summer: March 15, 2017

Academic Entry Requirements

- Satisfactory completion of a secondary/high school diploma with a recommended overall GPA of 2.5 on a 4.0 scale
 - SAT or ACT may be required for some programs or if English is your native language
 - The degree program you select may have additional requirements with which you must comply
 - Transfer students please visit: uab.edu/apply for entry requirements
- Note:** Meeting the minimum admission requirements does not guarantee admission to specific programs.

English Language Entry Requirement

- TOEFL iBT 77
- IELTS 6.0 overall with at least 5.5 on each section
- PTEA 51

uab.edu/apply

▼ Campus libraries offer countless resources for students to research and study.



Undergraduate Pathway Programs

The Pathway program combines intensive language study, academic skills development and credit-bearing coursework in a customized program designed to move students successfully into their bachelor’s degree program at UAB.

Understand the Pathway Program

INTO UAB’s Undergraduate Pathway program combines intensive language study, academic skills development and academic coursework in a program designed to move students successfully through the first year of their four-year degree program of study in the US.

Decide if the Program is Right for You

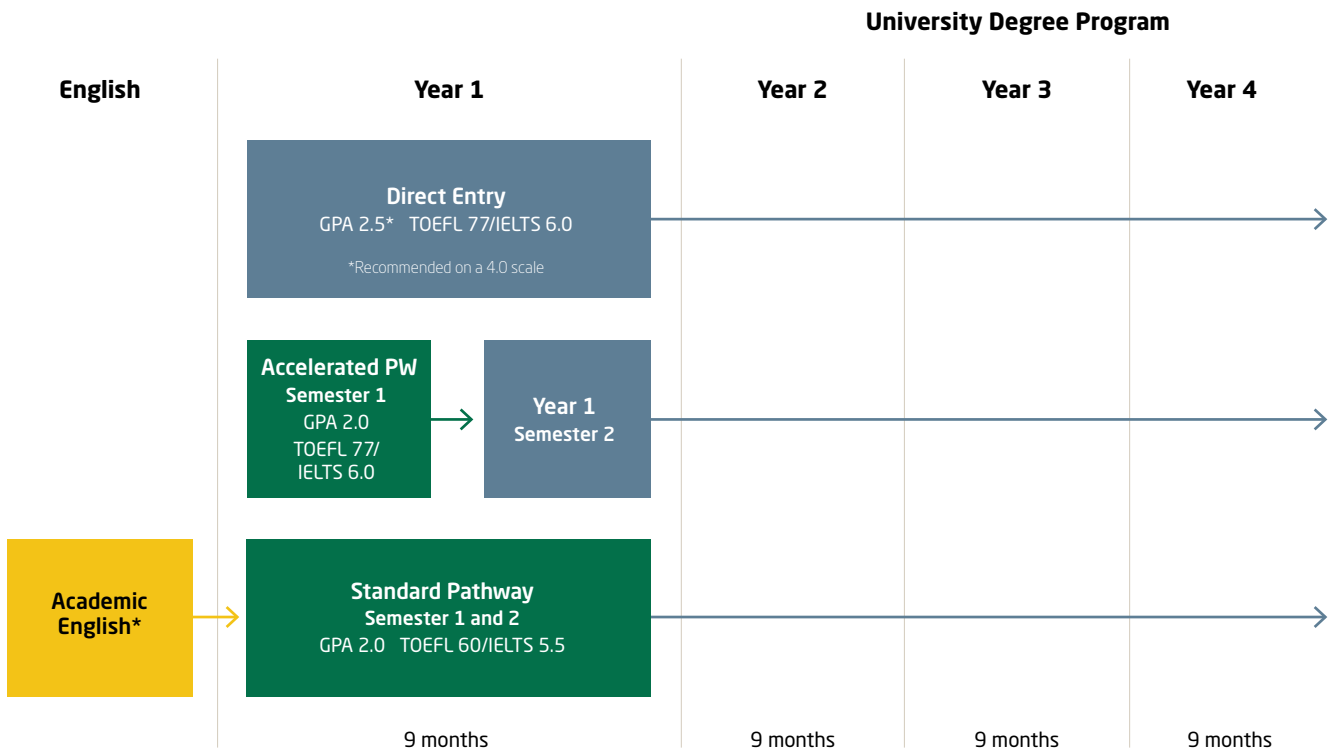
The Undergraduate Pathway program is for students who:

- Want to study for an undergraduate degree in the US
- Desire additional academic, language and cultural support in order to succeed during the first year at a US university
- May need to improve English language skills
- May have a lower GPA than required for direct admission to degree program
- Meet any or all of the above criteria

Fully Integrated University Experience

In addition to intensive English instruction, Pathway students take core academic courses including math, science, writing and other courses required of all students, domestic and international. All Undergraduate Pathway courses are UAB credit-bearing courses.

Undergraduate Pathway programs are available in the fall, spring and summer semesters. Some programs will require taking courses in the summer in order to complete the degree in four years. Programs such as engineering may require a fifth year to complete a bachelor’s degree.



*The length of your Academic English program before Pathway depends on your level of English.

Program Benefits

Pathway students receive the highest level of support during their transition abroad, making the program an ideal choice for international students who are driven to achieve high academic goals.

Other benefits include:

- Guaranteed progression to a UAB degree program (upon successful completion of a Pathway program)
- Full integration with domestic and international students on the UAB campus
- Access to all UAB cultural events, athletic events and activities including UAB's state-of-the-art recreation center
- Classrooms and accommodations in the heart of UAB's compact and accessible campus with shopping, dining and other services located nearby
- Individual supplemental tutoring
- Highly trained and experienced university instructors
- Academic advising throughout the program

Prepare for Success

At the end of the first year, Pathway students should be able to:

- Communicate effectively in written and spoken English
- Interact fully with professors and fellow students in a US classroom setting
- Understand research, reference and citation standards for American academic papers
- Use on-campus technology including computer hardware and software
- Read, comprehend and critically evaluate academic texts and problems
- Take useful and accurate notes in academic lectures

Transfer Students

Qualifying students who have earned credits at an accredited educational institution are welcome to apply to the INTO UAB undergraduate Pathway program.

Key Program Facts

Undergraduate Pathway Programs

- Business (page 23)
- Computer and Information Science (page 23)
- Engineering (page 24)
- General Studies (page 24)
- Public Health (page 25)
- Science (page 25)

Start Dates

- Fall: August 23, 2016
- Spring: January 3, 2017
- Summer: May 2, 2017

Program Duration

- Standard Pathway programs are two semesters (9 months)
- Accelerated Pathway programs are one semester (4 months)

Entry Requirements - Standard Pathway (2 Semesters)

- High school diploma
- 2.0 minimum high school GPA equivalent
- Language requirement:
 - TOEFL iBT 60 **or**
 - IELTS 5.5 **or**
 - PTEA 44 **or**
 - Completion of Academic English Level 4 **or**
 - Password overall level 6

Entry Requirements - Accelerated Pathway (1 Semester)

- High school diploma
- 2.0 minimum high school GPA equivalent
- Language requirement:
 - TOEFL iBT 77 **or**
 - IELTS 6.0 **or**
 - PTEA 51

Progression Requirements

- Minimum 2.0 GPA in Pathway
- C or better in all classes
- No I or W grades in any class

Housing Requirements

- All Undergraduate Pathway students are required to live in university housing for their first year.

Pathway Program Notes

- Specific Math courses are determined by results of Math placement test and requirements for the major field of study.



Progression Routes

Progression to the following undergraduate degrees may be granted upon successful completion of an Undergraduate Pathway program.

Business	General Studies	Public Health
Accounting	African American Studies	Public Health
Economics	Anthropology	Science
Finance	Art	Biology
Industrial Distribution	Chemistry	Biomedical Sciences*
Information Systems	Communication Studies	Chemistry
Management	Criminal Justice	Neuroscience*
Marketing	Education	Physics
Computer and Information Science	English	*Highly competitive entry requirements
Computer and Information Science	French	
Engineering	History	
Biomedical Engineering	International Studies	
Civil Engineering	Mathematics	
Electrical Engineering	Music	
Materials Engineering	Philosophy	
Mechanical Engineering	Political Science	
	Psychology	
	Social Work	
	Sociology	
	Spanish	
	Theatre	



Undergraduate Pathway Programs

Business				
Standard Pathway - 2 Semesters	Degree Program Components		Program Information	
Fall: August 23, 2016 Spring: January 3, 2017 Summer: May 2, 2017	120 credit hour program 32 credit hours apply from Pathway 88 credit hours remaining toward degree			
Entry Requirements <ul style="list-style-type: none"> High school diploma 2.0 minimum high school GPA equivalent Language requirement: <ul style="list-style-type: none"> TOEFL iBT 60 or IELTS 5.5 or PTEA 44 or Completion of Academic English Level 4 or Password overall level 6 	Semester 1	Course Title	Credit Hours	
	ELI 101	Academic Writing	3	
	ELI 102	Academic Reading	3	
	ELI 203	Academic English Listening and Speaking	3	
	ANTH 101	Cultural Anthropology	3	
	MA 105	Pre-Calculus Algebra	3	
	Total		15	
		Semester 2	Course Title	Credit Hours
	ELI 205	English Skills for Academic Success	4	
	CMST 101	Public Speaking	3	
	BUS 101	Introduction to Business	3	
	CH 105 ¹ or BY 101 ¹	Introduction to Chemistry I or Contemporary Biology	4	
	BUS 110	Essentials of Financial Literacy	3	
	Total		17	
	Progression Requirements <ul style="list-style-type: none"> Minimum 2.0 cumulative UAB GPA C or better in all courses No grades I or W permitted Notes: ¹ These courses include labs specific to the course of study and are dedicated to Pathway students. Students will also need to register for Chemistry (CH 106) and Biology labs (BY 102). These courses are generally delivered through the INTO UAB Center and are for Pathway students only.			
	Accelerated Pathway - 1 Semester	Degree Program Components		Program Information
	Fall: August 23, 2016 Spring: January 3, 2017 Summer: May 2, 2017	120 credit hour program 16 credit hours apply from Pathway 104 credit hours remaining toward degree		
Entry Requirements <ul style="list-style-type: none"> High school diploma 2.0 minimum high school GPA equivalent Language requirement: <ul style="list-style-type: none"> TOEFL iBT 77 or IELTS 6.0 or PTEA 51 	Semester 1	Course Title	Credit Hours	
	EH 101	Composition I	3	
	ELI 206	Accelerated English Skills for Academic Success	4	
	ANTH 101	Cultural Anthropology	3	
	MA 105	Pre-Calculus Algebra	3	
	BUS 101 or BUS 102	Introduction to Business or Foundations of Business	3	
	Total		16	

uab.edu/business

Computer and Information Science				
Standard Pathway - 2 Semesters	Degree Program Components		Program Information	
Fall: August 23, 2016 Spring: January 3, 2017 Summer: May 2, 2017	120 credit hour program 32 credit hours apply from Pathway 88 credit hours remaining toward degree			
Entry Requirements <ul style="list-style-type: none"> High school diploma 2.0 minimum high school GPA equivalent Language requirement: <ul style="list-style-type: none"> TOEFL iBT 60 or IELTS 5.5 or PTEA 44 or Completion of Academic English Level 4 or Password overall level 6 	Semester 1	Course Title	Credit Hours	
	ELI 101	Academic Writing	3	
	ELI 102	Academic Reading	3	
	ELI 203	Academic English Listening and Speaking	3	
	ANTH 101	Cultural Anthropology	3	
	MA 125	Calculus I	4	
	Total		16	
		Semester 2	Course Title	Credit Hours
	ELI 205	English Skills for Academic Success	4	
	CMST 101	Public Speaking	3	
	CAS 112	Success in College	1	
	CH 115 ¹	General Chemistry I	4	
	CS 101	Introduction to Computer Science	4	
	Total		16	
	Progression Requirements <ul style="list-style-type: none"> Minimum 2.0 cumulative UAB GPA C or better in all courses No grades I or W permitted Notes: ¹ This course includes a lab dedicated to Pathway students. Students will also need to register for Chemistry lab (CH 116). These courses are generally delivered through the INTO UAB Center and are for Pathway students only.			
	Accelerated Pathway - 1 Semester	Degree Program Components		Program Information
	Fall: August 23, 2016 Spring: January 3, 2017 Summer: May 2, 2017	120 credit hour program 15 credit hours apply from Pathway 105 credit hours remaining toward degree		
Entry Requirements <ul style="list-style-type: none"> High school diploma 2.0 minimum high school GPA equivalent Language requirement: <ul style="list-style-type: none"> TOEFL iBT 77 or IELTS 6.0 or PTEA 51 	Semester 1	Course Title	Credit Hours	
	EH 101	Composition I	3	
	ELI 206	Accelerated English Skills for Academic Success	4	
	ANTH 101	Cultural Anthropology	3	
	MA 125	Calculus I	4	
	CAS 112	Success in College	1	
	Total		15	

cis.uab.edu/academics/undergraduates/

Undergraduate Pathway Programs

Engineering																																												
Standard Pathway - 2 Semesters Fall: August 23, 2016 Spring: January 3, 2017 Summer: May 2, 2017	Degree Program Components 128 credit hour program 19 credit hours apply from Pathway 109 credit hours remaining toward degree		Program Information																																									
Entry Requirements <ul style="list-style-type: none"> High school diploma 2.0 minimum high school GPA equivalent Language requirement: <ul style="list-style-type: none"> TOEFL iBT 60 or IELTS 5.5 or PTEA 44 or Completion of Academic English Level 4 or Password overall level 6 	<table border="1"> <thead> <tr> <th>Semester 1</th> <th>Course Title</th> <th>Credit Hours</th> </tr> </thead> <tbody> <tr> <td>ELI 101</td> <td>Academic Writing</td> <td>3</td> </tr> <tr> <td>ELI 102</td> <td>Academic Reading</td> <td>3</td> </tr> <tr> <td>ELI 203</td> <td>Academic English Listening and Speaking</td> <td>3</td> </tr> <tr> <td>ANTH 101</td> <td>Cultural Anthropology</td> <td>3</td> </tr> <tr> <td>MA 125</td> <td>Calculus I</td> <td>4</td> </tr> <tr> <td colspan="2" style="text-align: right;">Total</td> <td>16</td> </tr> </tbody> </table> <table border="1"> <thead> <tr> <th>Semester 2</th> <th>Course Title</th> <th>Credit Hours</th> </tr> </thead> <tbody> <tr> <td>ELI 205</td> <td>English Skills for Academic Success</td> <td>4</td> </tr> <tr> <td>CMST 101</td> <td>Public Speaking</td> <td>3</td> </tr> <tr> <td>EGR 200</td> <td>Introduction to Engineering</td> <td>2</td> </tr> <tr> <td>CH 115¹</td> <td>General Chemistry I</td> <td>4</td> </tr> <tr> <td>MA 126</td> <td>Calculus II</td> <td>4</td> </tr> <tr> <td colspan="2" style="text-align: right;">Total</td> <td>17</td> </tr> </tbody> </table>	Semester 1	Course Title	Credit Hours	ELI 101	Academic Writing	3	ELI 102	Academic Reading	3	ELI 203	Academic English Listening and Speaking	3	ANTH 101	Cultural Anthropology	3	MA 125	Calculus I	4	Total		16	Semester 2	Course Title	Credit Hours	ELI 205	English Skills for Academic Success	4	CMST 101	Public Speaking	3	EGR 200	Introduction to Engineering	2	CH 115 ¹	General Chemistry I	4	MA 126	Calculus II	4	Total		17	Progression Requirements <ul style="list-style-type: none"> Minimum 2.0 cumulative UAB GPA C or better in all courses No grades I or W permitted Notes: ¹ This course includes a lab dedicated to Pathway students. Students will also need to register for Chemistry lab (CH 116). These courses are generally delivered through the INTO UAB Center and are for Pathway students only.
Semester 1	Course Title	Credit Hours																																										
ELI 101	Academic Writing	3																																										
ELI 102	Academic Reading	3																																										
ELI 203	Academic English Listening and Speaking	3																																										
ANTH 101	Cultural Anthropology	3																																										
MA 125	Calculus I	4																																										
Total		16																																										
Semester 2	Course Title	Credit Hours																																										
ELI 205	English Skills for Academic Success	4																																										
CMST 101	Public Speaking	3																																										
EGR 200	Introduction to Engineering	2																																										
CH 115 ¹	General Chemistry I	4																																										
MA 126	Calculus II	4																																										
Total		17																																										
Accelerated Pathway - 1 Semester Fall: August 23, 2016 Spring: January 3, 2017 Summer: May 2, 2017	Degree Program Components 128 credit hour program 12 credit hours apply from Pathway 116 credit hours remaining toward degree																																											
Entry Requirements <ul style="list-style-type: none"> High school diploma 2.0 minimum high school GPA equivalent Language requirement: <ul style="list-style-type: none"> TOEFL iBT 77 or IELTS 6.0 or PTEA 51 	<table border="1"> <thead> <tr> <th>Semester 1</th> <th>Course Title</th> <th>Credit Hours</th> </tr> </thead> <tbody> <tr> <td>EH 101</td> <td>Composition I</td> <td>3</td> </tr> <tr> <td>ELI 206</td> <td>Accelerated English Skills for Academic Success</td> <td>4</td> </tr> <tr> <td>ANTH 101</td> <td>Cultural Anthropology</td> <td>3</td> </tr> <tr> <td>MA 125</td> <td>Calculus I</td> <td>4</td> </tr> <tr> <td>EGR 200</td> <td>Introduction to Engineering</td> <td>2</td> </tr> <tr> <td colspan="2" style="text-align: right;">Total</td> <td>16</td> </tr> </tbody> </table>	Semester 1	Course Title	Credit Hours	EH 101	Composition I	3	ELI 206	Accelerated English Skills for Academic Success	4	ANTH 101	Cultural Anthropology	3	MA 125	Calculus I	4	EGR 200	Introduction to Engineering	2	Total		16																						
Semester 1	Course Title	Credit Hours																																										
EH 101	Composition I	3																																										
ELI 206	Accelerated English Skills for Academic Success	4																																										
ANTH 101	Cultural Anthropology	3																																										
MA 125	Calculus I	4																																										
EGR 200	Introduction to Engineering	2																																										
Total		16																																										
uab.edu/engineering/home/undergraduate-programs																																												
General Studies																																												
Standard Pathway - 2 Semesters Fall: August 23, 2016 Spring: January 3, 2017 Summer: May 2, 2017	Degree Program Components 120 credit hour program 32 credit hours apply from Pathway 88 credit hours remaining toward degree		Program Information																																									
Entry Requirements <ul style="list-style-type: none"> High school diploma 2.0 minimum high school GPA equivalent Language requirement: <ul style="list-style-type: none"> TOEFL iBT 60 or IELTS 5.5 or PTEA 44 or Completion of Academic English Level 4 or Password overall level 6 	<table border="1"> <thead> <tr> <th>Semester 1</th> <th>Course Title</th> <th>Credit Hours</th> </tr> </thead> <tbody> <tr> <td>ELI 101</td> <td>Academic Writing</td> <td>3</td> </tr> <tr> <td>ELI 102</td> <td>Academic Reading</td> <td>3</td> </tr> <tr> <td>ELI 203</td> <td>Academic English Listening and Speaking</td> <td>3</td> </tr> <tr> <td>ANTH 101</td> <td>Cultural Anthropology</td> <td>3</td> </tr> <tr> <td>MA 105</td> <td>Pre-Calculus Algebra</td> <td>3</td> </tr> <tr> <td colspan="2" style="text-align: right;">Total</td> <td>15</td> </tr> </tbody> </table> <table border="1"> <thead> <tr> <th>Semester 2</th> <th>Course Title</th> <th>Credit Hours</th> </tr> </thead> <tbody> <tr> <td>ELI 205</td> <td>English Skills for Academic Success</td> <td>4</td> </tr> <tr> <td>CMST 101</td> <td>Public Speaking</td> <td>3</td> </tr> <tr> <td>CAS 112</td> <td>Success in College</td> <td>1</td> </tr> <tr> <td>CH 105¹ or BY 101¹</td> <td>Introduction to Chemistry I or Contemporary Biology</td> <td>4</td> </tr> <tr> <td>GEN XXX</td> <td>Area II or Area IV Course</td> <td>3</td> </tr> <tr> <td colspan="2" style="text-align: right;">Total</td> <td>15</td> </tr> </tbody> </table>	Semester 1	Course Title	Credit Hours	ELI 101	Academic Writing	3	ELI 102	Academic Reading	3	ELI 203	Academic English Listening and Speaking	3	ANTH 101	Cultural Anthropology	3	MA 105	Pre-Calculus Algebra	3	Total		15	Semester 2	Course Title	Credit Hours	ELI 205	English Skills for Academic Success	4	CMST 101	Public Speaking	3	CAS 112	Success in College	1	CH 105 ¹ or BY 101 ¹	Introduction to Chemistry I or Contemporary Biology	4	GEN XXX	Area II or Area IV Course	3	Total		15	Progression Requirements <ul style="list-style-type: none"> Minimum 2.0 cumulative UAB GPA C or better in all courses No grades I or W permitted Notes: ¹ These courses include labs specific to the course of study and are dedicated to Pathway students. Students will also need to register for Chemistry (CH 106) and Biology labs (BY 102). These courses are generally delivered through the INTO UAB Center and are for Pathway students only.
Semester 1	Course Title	Credit Hours																																										
ELI 101	Academic Writing	3																																										
ELI 102	Academic Reading	3																																										
ELI 203	Academic English Listening and Speaking	3																																										
ANTH 101	Cultural Anthropology	3																																										
MA 105	Pre-Calculus Algebra	3																																										
Total		15																																										
Semester 2	Course Title	Credit Hours																																										
ELI 205	English Skills for Academic Success	4																																										
CMST 101	Public Speaking	3																																										
CAS 112	Success in College	1																																										
CH 105 ¹ or BY 101 ¹	Introduction to Chemistry I or Contemporary Biology	4																																										
GEN XXX	Area II or Area IV Course	3																																										
Total		15																																										
Accelerated Pathway - 1 Semester Fall: August 23, 2016 Spring: January 3, 2017 Summer: May 2, 2017	Degree Program Components 120 credit hour program 17 credit hours apply from Pathway 103 credit hours remaining toward degree																																											
Entry Requirements <ul style="list-style-type: none"> High school diploma 2.0 minimum high school GPA equivalent Language requirement: <ul style="list-style-type: none"> TOEFL iBT 77 or IELTS 6.0 or PTEA 51 	<table border="1"> <thead> <tr> <th>Semester 1</th> <th>Course Title</th> <th>Credit Hours</th> </tr> </thead> <tbody> <tr> <td>EH 101</td> <td>Composition I</td> <td>3</td> </tr> <tr> <td>ELI 206</td> <td>Accelerated English Skills for Academic Success</td> <td>4</td> </tr> <tr> <td>ANTH 101</td> <td>Cultural Anthropology</td> <td>3</td> </tr> <tr> <td>MA 105</td> <td>Pre-Calculus Algebra</td> <td>3</td> </tr> <tr> <td>CAS 112</td> <td>Success in College</td> <td>1</td> </tr> <tr> <td>GEN XXX</td> <td>Area II or Area IV Course</td> <td>3</td> </tr> <tr> <td colspan="2" style="text-align: right;">Total</td> <td>17</td> </tr> </tbody> </table>	Semester 1	Course Title	Credit Hours	EH 101	Composition I	3	ELI 206	Accelerated English Skills for Academic Success	4	ANTH 101	Cultural Anthropology	3	MA 105	Pre-Calculus Algebra	3	CAS 112	Success in College	1	GEN XXX	Area II or Area IV Course	3	Total		17																			
Semester 1	Course Title	Credit Hours																																										
EH 101	Composition I	3																																										
ELI 206	Accelerated English Skills for Academic Success	4																																										
ANTH 101	Cultural Anthropology	3																																										
MA 105	Pre-Calculus Algebra	3																																										
CAS 112	Success in College	1																																										
GEN XXX	Area II or Area IV Course	3																																										
Total		17																																										

Public Health				
Standard Pathway - 2 Semesters	Degree Program Components		Program Information	
Fall: August 23, 2016 Spring: January 3, 2017 Summer: May 2, 2017	120 credit hour program 32 credit hours apply from Pathway 88 credit hours remaining toward degree			
Entry Requirements <ul style="list-style-type: none"> High school diploma 2.0 minimum high school GPA equivalent Language requirement: <ul style="list-style-type: none"> TOEFL iBT 60 or IELTS 5.5 or PTEA 44 or Completion of Academic English Level 4 or Password overall level 6 	Semester 1	Course Title	Credit Hours	
	ELI 101	Academic Writing	3	
	ELI 102	Academic Reading	3	
	ELI 203	Academic English Listening and Speaking	3	
	ANTH 101	Cultural Anthropology	3	
	MA 105	Pre-Calculus Algebra	3	
	Total		15	
		Semester 2	Course Title	Credit Hours
	ELI 205	English Skills for Academic Success	4	
	CMST 101	Public Speaking	3	
	CH 105 ¹ or BY 101 ¹	Introduction to Chemistry I or Contemporary Biology	4	
	PUH 201	Origins of Epidemics	3	
	PUH 202	Introduction to Global Health	3	
	Total		17	
	Progression Requirements <ul style="list-style-type: none"> Minimum 2.0 cumulative UAB GPA C or better in all courses No grades I or W permitted Notes: ¹ These courses include labs specific to the course of study and are dedicated to Pathway students. Students will also need to register for Chemistry (CH 106) and Biology labs (BY 102). These courses are generally delivered through the INTO UAB Center and are for Pathway students only.			
	Accelerated Pathway - 1 Semester	Degree Program Components		
	Fall: August 23, 2016 Spring: January 3, 2017 Summer: May 2, 2017	120 credit hour program 16 credit hours apply from Pathway 104 credit hours remaining toward degree		
Entry Requirements <ul style="list-style-type: none"> High school diploma 2.0 minimum high school GPA equivalent Language requirement: <ul style="list-style-type: none"> TOEFL iBT 77 or IELTS 6.0 or PTEA 51 	Semester 1	Course Title	Credit Hours	
	EH 101	Composition I	3	
	ELI 206	Accelerated English Skills for Academic Success	4	
	ANTH 101	Cultural Anthropology	3	
	MA 105	Pre-Calculus Algebra	3	
	PUH 201	Origins of Epidemics	3	
	Total		16	

soph.uab.edu/undergraduate

Science				
Standard Pathway - 2 Semesters	Degree Program Components		Program Information	
Fall: August 23, 2016 Spring: January 3, 2017 Summer: May 2, 2017	120 credit hour program 19-32 credit hours apply from Pathway ² 88-101 credit hours remaining toward degree			
Entry Requirements <ul style="list-style-type: none"> High school diploma 2.0 minimum high school GPA equivalent Language requirement: <ul style="list-style-type: none"> TOEFL iBT 60 or IELTS 5.5 or PTEA 44 or Completion of Academic English Level 4 or Password overall level 6 	Semester 1	Course Title	Credit Hours	
	ELI 101	Academic Writing	3	
	ELI 102	Academic Reading	3	
	ELI 203	Academic English Listening and Speaking	3	
	ANTH 101	Cultural Anthropology	3	
	MA 125	Calculus I	4	
	Total		16	
		Semester 2	Course Title	Credit Hours
	ELI 205	English Skills for Academic Success	4	
	CMST 101	Public Speaking	3	
	CAS 112	Success in College	1	
	CH 115 ¹	General Chemistry I	4	
	MA 126 or BY 123	Calculus II or Introduction to Biology	4	
	Total		16	
	Progression Requirements <ul style="list-style-type: none"> Minimum 2.0 cumulative UAB GPA C or better in all courses No grades I or W permitted Notes: ¹ This course includes a lab dedicated to Pathway students. Students will also need to register for Chemistry lab (CH 116). ² 19 credit hours apply towards Biomedical Sciences, Neuroscience and Physics, while 32 credit hours apply towards Biology and Chemistry. ³ 11 credit hours apply towards Biomedical Sciences, Neuroscience and Physics, while 15 credit hours apply towards Biology and Chemistry. These courses are generally delivered through the INTO UAB Center and are for Pathway students only.			
	Accelerated Pathway - 1 Semester	Degree Program Components		
	Fall: August 23, 2016 Spring: January 3, 2017 Summer: May 2, 2017	120 credit hour program 11-15 credit hours apply from Pathway ³ 105-109 credit hours remaining toward degree		
Entry Requirements <ul style="list-style-type: none"> High school diploma 2.0 minimum high school GPA equivalent Language requirement: <ul style="list-style-type: none"> TOEFL iBT 77 or IELTS 6.0 or PTEA 51 	Semester 1	Course Title	Credit Hours	
	EH 101	Composition I	3	
	ELI 206	Accelerated English Skills for Academic Success	4	
	ANTH 101	Cultural Anthropology	3	
	MA 125	Calculus I	4	
	CAS 112	Success in College	1	
	Total		15	

The UAB Graduate School seeks to nurture skills that transcend disciplinary boundaries, preparing graduate students to participate successfully in professional and academic arenas.



Knowledge that
change your v

91

Total graduate-level programs offered by the university



Hands-on, experiential learning offers students real-world knowledge to excel after graduation

Graduate



at will
world

#19

Ranked master's program in
Public Health in the US
(*U.S. News & World Report 2016*)



\$433M

in funding with more than
100 research centers

Graduate Direct Entry

With coordinated and interdisciplinary degree programs available, the UAB Graduate School offers students an opportunity to tailor their educational experience to their own career objective.

1. Meet Admission Requirements

Visit The University of Alabama at Birmingham's website to review the admission requirements for your degree program. Ensure you meet all academic and language requirements for admission.

- A US bachelor's degree or equivalent
- 3.0 or higher GPA on a US 4.0 scale
- To meet the English language requirement, credentials proving English proficiency must be received. These items may include, but are not limited to:
 - TOEFL iBT 80+
 - IELTS 6.5
 - PTEA 53
 - Successful completion of Academic English Level 5
- GRE/GMAT may be required for some programs
- For more information on proving English proficiency, visit: uab.edu/graduate/admissions/international-admission

Start Dates for UAB Degree Programs

Semester	Start Date	Graduate Application Deadline	Application Fee*
Fall 2016	August 29, 2016	June 1, 2016	\$45-85
Spring 2017	January 9, 2017	November 1, 2016	\$45-85
Summer 2017	May 8, 2017	March 15, 2017	\$45-85

*Application fee varies by program.

2. Understand Admissions

The graduate admission process involves an initial review by Graduate Admissions to ensure that your application is complete and minimum institutional requirements are met. The completed application and supporting materials are then sent to the degree program you select for an admission decision.

For detailed admissions information, visit: uab.edu/graduate/online-forms

3. Submit Your Application

- Apply online or download the application and fill out all required fields
- The application requires a \$45-85 non-refundable application fee, depending on program, paid by check, money order or credit card

For more information, visit: app.applyyourself.com/AYApplicantLogin/fl_ApplicantLogin.asp?id=uab-grad



Academic and English Testing Score Codes for UAB

GRE: 1856	TOEFL: 1856	GMAT: DIRECT	IELTS: DIRECT
------------------	--------------------	---------------------	----------------------

4. Provide Required Documents

- Official university transcripts and other credentials required by the program must be mailed directly to the UAB Admissions Office from the registrar or equivalent officer at your university.
- Transcripts and other required credentials must be submitted in the original language, accompanied by an official English translation, from the issuing institution. Transcripts must contain all college or university academic credits, grades and documentation of degrees earned.
- For applicants whose first language is not English, or applicants who hold an earned bachelor's degree from a non-English institution, English language proficiency credentials must be received.
- GMAT, GRE or other graduate examination test scores if required by degree program.
- Submit a copy of your passport with your admission application.

All official admission credentials should be sent directly to the The University of Alabama at Birmingham Admissions Office in a sealed and stamped envelope:

The University of Alabama at Birmingham

Office of Graduate Admissions
 Box 99
 1720 2nd Ave S
 Birmingham, Alabama 35294
 USA

T: +1 205 934 8221
E: chooseuab@uab.edu

5. Finalize Your Plans

If admitted, you will receive a letter of acceptance and an I-20 form. The I-20 form is used to apply for a student visa (F-1) at an American Embassy or Consulate. UAB will also send a housing application and a form you can complete to notify the university of your arrival.

Additional pre-departure and orientation information is available at:
uab.edu/students/images/documents/international/Checklist_2013-2014.pdf

Third-party Authorization

If a family member or educational counselor is assisting with the completion of your application and you would like for UAB to communicate with them regarding your application, please contact the Admissions office at chooseuab@uab.edu or +1 205 934 8221.

Key Program Facts

Start Dates

- Fall: August 29, 2016
- Spring: January 9, 2017
- Summer: May 8, 2017

Application Deadlines

- Fall: June 1, 2016
- Spring: November 1, 2016
- Summer: March 15, 2017

Academic Entry Requirement

- A bachelor's degree or equivalent with a minimum 3.0 GPA on a 4.0 scale
- Minimum GRE or GMAT scores, if required by desired degree program
- The degree program you select may have additional requirements with which you must comply

Note: Meeting the minimum admission requirements does not guarantee admission to UAB or any specific program. Admission decisions may be based on such factors as the suitability of the applicant's research interests, the availability of professors in a particular field of research and the number of qualified applicants.

English Language Entry Requirement

- TOEFL iBT 80+
- IELTS 6.5
- PTEA 53
- Successful completion of Academic English Level 5

uab.edu/graduate

Top 100 UAB Graduate Programs

- #2 Health Care Management
- #9 Nursing Administration
- #10 Best Medical Schools: AIDS Research
- #12 Nurse Practitioner: Adult / Gerontology, Acute Care
- #13 Best Nursing Schools
- #14 Nurse Practitioner: Family
- #16 Physician Assistant
- #17 Best Medical Schools: Primary Care
- #19 Physical Therapy
- #19 Public Health
- #28 Occupational Therapy
- #37 Best Medical Schools: Research
- #42 Biological Sciences
- #56 Biomedical Engineering / Bioengineering
- #60 Clinical Psychology
- #70 Statistics
- #73 Part-time MBA
- #73 Public Affairs
- #78 Psychology
- #94 Sociology

As ranked by U.S. News & World Report 2016.

Graduate Pathway Programs

Students enrolled in Graduate Pathway programs have the opportunity to begin earning credits toward their master’s degree while also receiving English instruction from INTO The University of Alabama at Birmingham.

Understand the Pathway Program

The innovative Graduate Pathway programs offered at INTO UAB are designed to develop international students’ academic knowledge and strengthen their language ability and study skills, enabling them to progress successfully to a UAB graduate degree program.

There are two Pathway options for students with the equivalent of a four-year undergraduate bachelor’s degree:

Standard Pathway (two semesters)

- Students with an equivalent four-year bachelor’s degree **and**
- TOEFL iBT 65+, IELTS 5.5 PTEA 44 or completion of Academic English Level 4.

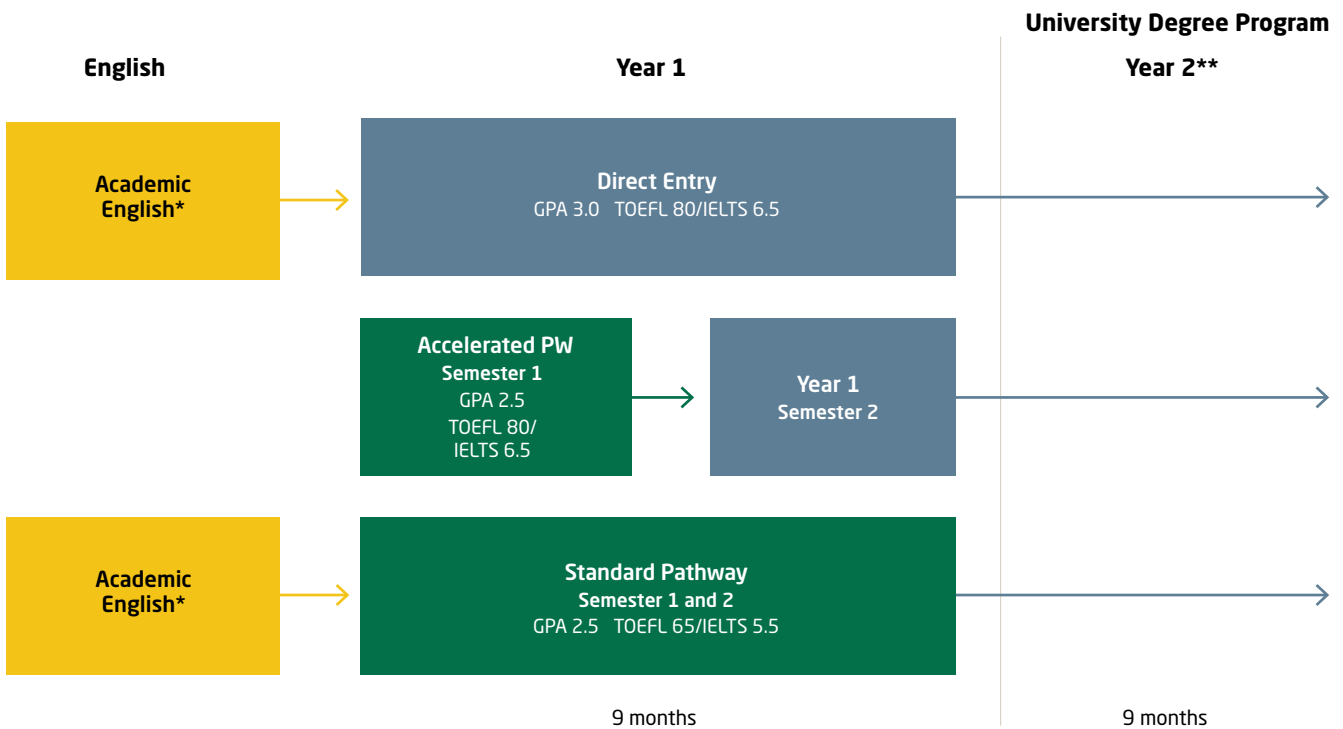
Accelerated Pathway (one semester)

- Students with an equivalent four-year bachelor’s degree **and**
- TOEFL iBT 80+, IELTS 6.5, PTEA 53

Decide if the Program is Right for You

The Graduate Pathway program is for students who:

- Want to study for a graduate degree in the US
- Desire additional academic, language and cultural support in order to succeed during the first year at a US university
- May need to improve English language skills
- May have a lower GPA than required for direct admission to degree program
- Meet any or all of the above criteria



*The length of your Academic English program before Pathway depends on your level of English.

**Length of graduate degree program depends on the academic area of study and the intended degree type, and may take longer than two years to complete.

Fully Integrated University Experience

The academic courses included in the Graduate Pathway programs are carefully chosen to ensure student success in graduate-level studies. Academic courses are all existing UAB courses and most will provide an opportunity to study alongside both American and international students. The exact program structure and combination of classes taken will depend upon a student's previous academic record and future study plan. Students will be registered into required courses before their academic orientation at the INTO UAB Center.

In addition to intensive English instruction, students will also receive instruction in study skills and GMAT test preparation if needed.

Student work is monitored by Graduate Pathway Coordinators that provide additional academic support for students who have difficulty in classes. The coordinators also assist students by working with academic department officials to obtain official approval of any changes that students may need to make to their study plans.

Program Benefits

Pathway students receive the highest level of support during their transition abroad, making it an ideal choice for international students who are driven to achieve high academic goals. Students who successfully complete a Graduate Pathway program are assured progression to a UAB graduate degree program upon submission of additional required application materials.

Other benefits include:

- Full integration with domestic and international students on the UAB campus
- Access to all UAB cultural events, athletic events and activities including UAB's state-of-the-art recreation center
- Classrooms and accommodations in the heart of UAB's compact and accessible campus with shopping, dining and other services located nearby
- Highest level of support for student success
- Highly trained and experienced university instructors
- Academic advising throughout the program

Key Program Facts**Graduate Pathway Programs****Arts and Sciences**

- Computer and Information Science (page 33)

Business

- Business Administration (page 32)

Clinical and Diagnostic Sciences

- Biotechnology (page 32)

Engineering

- Civil (page 34)
- Design and Commercialization (page 33)
- Electrical (page 34)
- Materials (page 35)
- Mechanical (page 35)

Public Health

- Public Health (page 36)

Start Dates

- Fall: August 23, 2016
- Spring: January 3, 2017
- Summer: May 2, 2017

Program Duration

- Standard Pathway programs are two semesters (9 months)
- Accelerated Pathway programs are one semester (4 months)

Entry Requirements - Standard Pathway (2 Semesters)

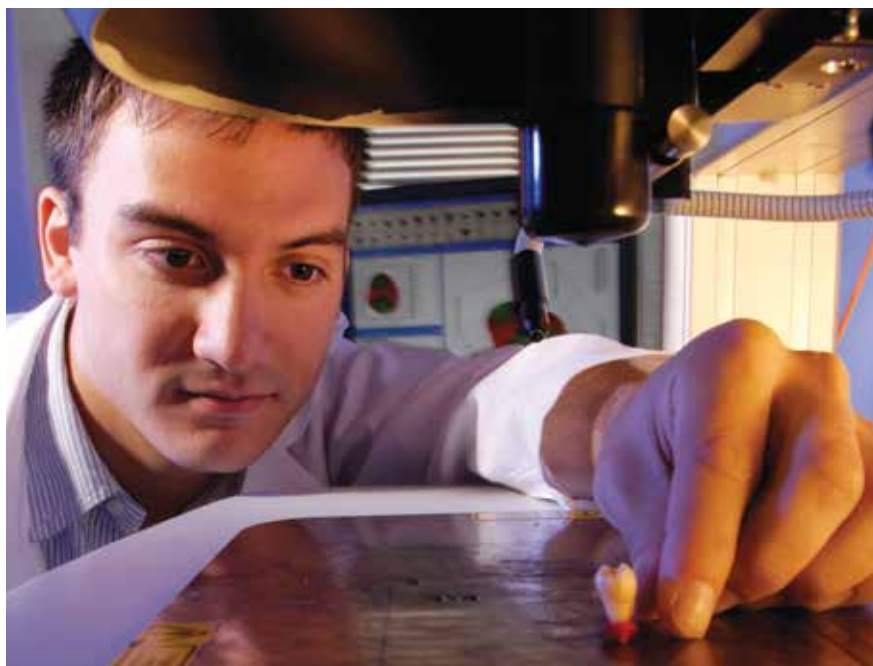
- Four-year undergraduate degree or equivalent
- 2.5 undergraduate GPA
- Language requirement:
 - TOEFL iBT 65 **or**
 - IELTS 5.5 **or**
 - PTEA 44 **or**
 - Completion of Academic English Level 4 **or**
 - Password overall level 6

Entry Requirements - Accelerated Pathway (1 Semester)

- Four-year undergraduate degree or equivalent
- 2.5 undergraduate GPA
- Language requirement:
 - TOEFL iBT 80 **or**
 - IELTS 6.5 **or**
 - PTEA 53

Progression Requirements

- Minimum 3.0 GPA in graduate level courses
- No grades below B
- No I or W grades in any class
- Some Pathway programs require GRE or GMAT scores be on file by the end of the final Pathway semester
- Successful completion of all required courses



Graduate Pathway Programs

Master of Science in Biotechnology															
Standard Pathway - 2 Semesters Fall: August 23, 2016 Spring: January 3, 2017 Summer: May 2, 2017	Degree Program Components 36 credit hour program 12 credit hours apply from Pathway 24 credit hours remaining toward degree		Program Information												
Entry Requirements <ul style="list-style-type: none"> Four-year undergraduate degree in Biochemistry, Biology, Biotechnology, Chemistry, Engineering, Mathematics, Physics, Psychology, Sociology 2.5 undergraduate GPA Language requirement: <ul style="list-style-type: none"> TOEFL iBT 65 or IELTS 5.5 or PTEA 44 or Completion of Academic English Level 4 or Password overall level 6 	Semester 1	<table border="1"> <thead> <tr> <th>Course Title</th> <th>Credit Hours</th> </tr> </thead> <tbody> <tr> <td>ELI 401 Academic Reading/Writing I</td> <td>3</td> </tr> <tr> <td>ELI 402 Academic Speaking/Listening I</td> <td>3</td> </tr> <tr> <td>BT 500 Nucleic Acids Technology</td> <td>3</td> </tr> <tr> <td>BT 670 Bench to Commercialization I</td> <td>3</td> </tr> <tr> <td>Total</td> <td>12</td> </tr> </tbody> </table>	Course Title	Credit Hours	ELI 401 Academic Reading/Writing I	3	ELI 402 Academic Speaking/Listening I	3	BT 500 Nucleic Acids Technology	3	BT 670 Bench to Commercialization I	3	Total	12	Progression Requirements <ul style="list-style-type: none"> Minimum 3.0 GPA in graduate level courses B or better in all courses No grades I or W permitted <p>These courses are generally delivered through the INTO UAB Center and are for Pathway students only.</p>
	Course Title	Credit Hours													
ELI 401 Academic Reading/Writing I	3														
ELI 402 Academic Speaking/Listening I	3														
BT 500 Nucleic Acids Technology	3														
BT 670 Bench to Commercialization I	3														
Total	12														
Semester 2	<table border="1"> <thead> <tr> <th>Course Title</th> <th>Credit Hours</th> </tr> </thead> <tbody> <tr> <td>ELI 403 Academic Reading/Writing II</td> <td>3</td> </tr> <tr> <td>ELI 404 Academic Speaking/Listening II</td> <td>3</td> </tr> <tr> <td>BT 550 Amino Acids Technology</td> <td>3</td> </tr> <tr> <td>BT 671 Bench to Commercialization II</td> <td>3</td> </tr> <tr> <td>Total</td> <td>12</td> </tr> </tbody> </table>	Course Title	Credit Hours	ELI 403 Academic Reading/Writing II	3	ELI 404 Academic Speaking/Listening II	3	BT 550 Amino Acids Technology	3	BT 671 Bench to Commercialization II	3	Total	12		
Course Title	Credit Hours														
ELI 403 Academic Reading/Writing II	3														
ELI 404 Academic Speaking/Listening II	3														
BT 550 Amino Acids Technology	3														
BT 671 Bench to Commercialization II	3														
Total	12														
Accelerated Pathway - 1 Semester Fall: August 23, 2016 Spring: January 3, 2017 Summer: May 2, 2017	Degree Program Components 36 credit hour program 9 credit hours apply from Pathway 27 credit hours remaining toward degree														
Entry Requirements <ul style="list-style-type: none"> Four-year undergraduate degree in Biochemistry, Biology, Biotechnology, Chemistry, Engineering, Mathematics, Physics, Psychology, Sociology 2.5 undergraduate GPA Language requirement: <ul style="list-style-type: none"> TOEFL iBT 80 or IELTS 6.5 or PTEA 53 	Semester 1	<table border="1"> <thead> <tr> <th>Course Title</th> <th>Credit Hours</th> </tr> </thead> <tbody> <tr> <td>ELI 405 Academic English Skills</td> <td>3</td> </tr> <tr> <td>BT 600 Systems Biology</td> <td>3</td> </tr> <tr> <td>BT 672 Bench to Commercialization III</td> <td>3</td> </tr> <tr> <td>BT 698 Non Thesis Research</td> <td>3</td> </tr> <tr> <td>Total</td> <td>12</td> </tr> </tbody> </table>	Course Title	Credit Hours	ELI 405 Academic English Skills	3	BT 600 Systems Biology	3	BT 672 Bench to Commercialization III	3	BT 698 Non Thesis Research	3	Total	12	
	Course Title	Credit Hours													
ELI 405 Academic English Skills	3														
BT 600 Systems Biology	3														
BT 672 Bench to Commercialization III	3														
BT 698 Non Thesis Research	3														
Total	12														
Semester 2	<table border="1"> <thead> <tr> <th>Course Title</th> <th>Credit Hours</th> </tr> </thead> <tbody> <tr> <td>ELI 403 Academic Reading/Writing II</td> <td>3</td> </tr> <tr> <td>ELI 404 Academic Speaking/Listening II</td> <td>3</td> </tr> <tr> <td>BT 550 Amino Acids Technology</td> <td>3</td> </tr> <tr> <td>BT 671 Bench to Commercialization II</td> <td>3</td> </tr> <tr> <td>Total</td> <td>12</td> </tr> </tbody> </table>	Course Title	Credit Hours	ELI 403 Academic Reading/Writing II	3	ELI 404 Academic Speaking/Listening II	3	BT 550 Amino Acids Technology	3	BT 671 Bench to Commercialization II	3	Total	12		
Course Title	Credit Hours														
ELI 403 Academic Reading/Writing II	3														
ELI 404 Academic Speaking/Listening II	3														
BT 550 Amino Acids Technology	3														
BT 671 Bench to Commercialization II	3														
Total	12														

uab.edu/shp/cds/biotechnology-m-s-c-l-s-or-certificate

Master of Business Administration (MBA)																	
Standard Pathway - 2 Semesters Fall: August 23, 2016 Spring: January 3, 2017 Summer: May 2, 2017	Degree Program Components 36 credit hour program 12 credit hours apply from Pathway 24 credit hours remaining toward degree		Program Information														
Entry Requirements <ul style="list-style-type: none"> Four-year undergraduate degree or equivalent 2.5 undergraduate GPA No work experience required Language requirement: <ul style="list-style-type: none"> TOEFL iBT 65 or IELTS 5.5 or PTEA 44 or Completion of Academic English Level 4 or Password overall level 6 	Semester 1	<table border="1"> <thead> <tr> <th>Course Title</th> <th>Credit Hours</th> </tr> </thead> <tbody> <tr> <td>ELI 401 Academic Reading/Writing I</td> <td>3</td> </tr> <tr> <td>ELI 402 Academic Speaking/Listening I</td> <td>3</td> </tr> <tr> <td>MBA 601 Accounting and Finance for Managers</td> <td>3</td> </tr> <tr> <td>MBA 631 Management and Organizations</td> <td>3</td> </tr> <tr> <td>GMAT Preparation</td> <td>0</td> </tr> <tr> <td>Total</td> <td>12</td> </tr> </tbody> </table>	Course Title	Credit Hours	ELI 401 Academic Reading/Writing I	3	ELI 402 Academic Speaking/Listening I	3	MBA 601 Accounting and Finance for Managers	3	MBA 631 Management and Organizations	3	GMAT Preparation	0	Total	12	Progression Requirements <ul style="list-style-type: none"> Minimum 3.0 GPA in graduate level courses B or better in all courses No grades I or W permitted GMAT 480 <p>These courses are generally delivered through the INTO UAB Center and are for Pathway students only.</p>
	Course Title	Credit Hours															
ELI 401 Academic Reading/Writing I	3																
ELI 402 Academic Speaking/Listening I	3																
MBA 601 Accounting and Finance for Managers	3																
MBA 631 Management and Organizations	3																
GMAT Preparation	0																
Total	12																
Semester 2	<table border="1"> <thead> <tr> <th>Course Title</th> <th>Credit Hours</th> </tr> </thead> <tbody> <tr> <td>ELI 403 Academic Reading/Writing II</td> <td>3</td> </tr> <tr> <td>ELI 404 Academic Speaking/Listening II</td> <td>3</td> </tr> <tr> <td>MBA 642 Economics for Managers</td> <td>3</td> </tr> <tr> <td>MBA 662 Quantitative Analysis for Managers</td> <td>3</td> </tr> <tr> <td>GMAT Preparation</td> <td>0</td> </tr> <tr> <td>Total</td> <td>12</td> </tr> </tbody> </table>	Course Title	Credit Hours	ELI 403 Academic Reading/Writing II	3	ELI 404 Academic Speaking/Listening II	3	MBA 642 Economics for Managers	3	MBA 662 Quantitative Analysis for Managers	3	GMAT Preparation	0	Total	12		
Course Title	Credit Hours																
ELI 403 Academic Reading/Writing II	3																
ELI 404 Academic Speaking/Listening II	3																
MBA 642 Economics for Managers	3																
MBA 662 Quantitative Analysis for Managers	3																
GMAT Preparation	0																
Total	12																
Accelerated Pathway - 1 Semester Fall: August 23, 2016 Spring: January 3, 2017 Summer: May 2, 2017	Degree Program Components 36 credit hour program 9 credit hours apply from Pathway 27 credit hours remaining toward degree																
Entry Requirements <ul style="list-style-type: none"> Four-year undergraduate degree or equivalent 2.5 undergraduate GPA No work experience required Language requirement: <ul style="list-style-type: none"> TOEFL iBT 80 or IELTS 6.5 or PTEA 53 	Semester 1	<table border="1"> <thead> <tr> <th>Course Title</th> <th>Credit Hours</th> </tr> </thead> <tbody> <tr> <td>ELI 405 Academic English Skills</td> <td>3</td> </tr> <tr> <td>MBA 631 Management and Organizations</td> <td>3</td> </tr> <tr> <td>MBA 642 Economics for Managers</td> <td>3</td> </tr> <tr> <td>MBA 662 Quantitative Analysis for Managers</td> <td>3</td> </tr> <tr> <td>GMAT Preparation</td> <td>0</td> </tr> <tr> <td>Total</td> <td>12</td> </tr> </tbody> </table>	Course Title	Credit Hours	ELI 405 Academic English Skills	3	MBA 631 Management and Organizations	3	MBA 642 Economics for Managers	3	MBA 662 Quantitative Analysis for Managers	3	GMAT Preparation	0	Total	12	
	Course Title	Credit Hours															
ELI 405 Academic English Skills	3																
MBA 631 Management and Organizations	3																
MBA 642 Economics for Managers	3																
MBA 662 Quantitative Analysis for Managers	3																
GMAT Preparation	0																
Total	12																
Semester 2	<table border="1"> <thead> <tr> <th>Course Title</th> <th>Credit Hours</th> </tr> </thead> <tbody> <tr> <td>ELI 403 Academic Reading/Writing II</td> <td>3</td> </tr> <tr> <td>ELI 404 Academic Speaking/Listening II</td> <td>3</td> </tr> <tr> <td>MBA 642 Economics for Managers</td> <td>3</td> </tr> <tr> <td>MBA 662 Quantitative Analysis for Managers</td> <td>3</td> </tr> <tr> <td>GMAT Preparation</td> <td>0</td> </tr> <tr> <td>Total</td> <td>12</td> </tr> </tbody> </table>	Course Title	Credit Hours	ELI 403 Academic Reading/Writing II	3	ELI 404 Academic Speaking/Listening II	3	MBA 642 Economics for Managers	3	MBA 662 Quantitative Analysis for Managers	3	GMAT Preparation	0	Total	12		
Course Title	Credit Hours																
ELI 403 Academic Reading/Writing II	3																
ELI 404 Academic Speaking/Listening II	3																
MBA 642 Economics for Managers	3																
MBA 662 Quantitative Analysis for Managers	3																
GMAT Preparation	0																
Total	12																

uab.edu/business/home/degrees-certificates/mba

Master of Science in Computer and Information Science

Standard Pathway - 2 Semesters Fall: August 23, 2016 Spring: January 3, 2017 Summer: May 2, 2017	Degree Program Components 30 credit hour program 12 credit hours apply from Pathway 18 credit hours remaining toward degree	Program Information
--	---	----------------------------

Entry Requirements <ul style="list-style-type: none"> Four-year undergraduate degree in Computer Science, Computer Engineering, Electrical Engineering, Mathematics or related field 2.5 undergraduate GPA Language requirement: <ul style="list-style-type: none"> TOEFL iBT 65 or IELTS 5.5 or PTEA 44 or Completion of Academic English Level 4 or Password overall level 6 	Semester 1	Course Title	Credit Hours	Progression Requirements <ul style="list-style-type: none"> Minimum 3.0 GPA in graduate level courses B or better in all courses No grades I or W permitted Notes: ¹ Summer courses may vary. These courses are generally delivered through the INTO UAB Center and are for Pathway students only.															
	<table border="1"> <tr><td>ELI 401</td><td>Academic Reading/Writing I</td><td>3</td></tr> <tr><td>ELI 402</td><td>Academic Speaking/Listening I</td><td>3</td></tr> <tr><td>CS 550¹</td><td>Automation and Formal Language Theory</td><td>3</td></tr> <tr><td>CS 630¹</td><td>Computer Systems</td><td>3</td></tr> <tr><td colspan="2" style="text-align: right;">Total</td><td>12</td></tr> </table>	ELI 401	Academic Reading/Writing I		3	ELI 402	Academic Speaking/Listening I	3	CS 550 ¹	Automation and Formal Language Theory	3	CS 630 ¹	Computer Systems	3	Total		12	Semester 2	Course Title
ELI 401	Academic Reading/Writing I	3																	
ELI 402	Academic Speaking/Listening I	3																	
CS 550 ¹	Automation and Formal Language Theory	3																	
CS 630 ¹	Computer Systems	3																	
Total		12																	
	<table border="1"> <tr><td>ELI 403¹</td><td>Academic Reading/Writing II</td><td>3</td></tr> <tr><td>ELI 404¹</td><td>Academic Speaking/Listening II</td><td>3</td></tr> <tr><td>CS 610</td><td>Database Systems I</td><td>3</td></tr> <tr><td>CS 660</td><td>Artificial Intelligence</td><td>3</td></tr> <tr><td colspan="2" style="text-align: right;">Total</td><td>12</td></tr> </table>	ELI 403 ¹	Academic Reading/Writing II	3	ELI 404 ¹	Academic Speaking/Listening II	3	CS 610	Database Systems I	3	CS 660	Artificial Intelligence	3	Total		12			
ELI 403 ¹	Academic Reading/Writing II	3																	
ELI 404 ¹	Academic Speaking/Listening II	3																	
CS 610	Database Systems I	3																	
CS 660	Artificial Intelligence	3																	
Total		12																	

Accelerated Pathway - 1 Semester Fall: August 23, 2016 Spring: January 3, 2017 Summer: May 2, 2017	Degree Program Components 30 credit hour program 9 credit hours apply from Pathway 21 credit hours remaining toward degree
--	--

Entry Requirements <ul style="list-style-type: none"> Four-year undergraduate degree in Computer Science, Computer Engineering, Electrical Engineering, Mathematics or related field 2.5 undergraduate GPA Language requirement: <ul style="list-style-type: none"> TOEFL iBT 80 or IELTS 6.5 or PTEA 53 	Semester 1	Course Title	Credit Hours														
	<table border="1"> <tr><td>ELI 405</td><td>Academic English Skills</td><td>3</td></tr> <tr><td>CS 550 or CS 610</td><td>Automation and Formal Language Theory (fall) or Database Systems I (spring)</td><td>3</td></tr> <tr><td>CS 630 or CS 660</td><td>Computer Systems (fall) or Artificial Intelligence (spring)</td><td>3</td></tr> <tr><td>CS 670 or CS 680</td><td>Computer Graphics (fall) or Numerical Computing Foundation (spring)</td><td>3</td></tr> <tr><td colspan="2" style="text-align: right;">Total</td><td>12</td></tr> </table>	ELI 405	Academic English Skills	3	CS 550 or CS 610	Automation and Formal Language Theory (fall) or Database Systems I (spring)	3	CS 630 or CS 660	Computer Systems (fall) or Artificial Intelligence (spring)	3	CS 670 or CS 680	Computer Graphics (fall) or Numerical Computing Foundation (spring)	3	Total		12	
ELI 405	Academic English Skills	3															
CS 550 or CS 610	Automation and Formal Language Theory (fall) or Database Systems I (spring)	3															
CS 630 or CS 660	Computer Systems (fall) or Artificial Intelligence (spring)	3															
CS 670 or CS 680	Computer Graphics (fall) or Numerical Computing Foundation (spring)	3															
Total		12															

cis.uab.edu/academics/graduates/master-program/

Master of Engineering in Design and Commercialization

Standard Pathway - 2 Semesters Fall: August 23, 2016 Spring: January 3, 2017 Summer: May 2, 2017	Degree Program Components 33 credit hour program 12 credit hours apply from Pathway 21 credit hours remaining toward degree	Program Information
--	---	----------------------------

Entry Requirements <ul style="list-style-type: none"> Four-year undergraduate degree in Engineering, Biology, Chemistry, Mathematics or Physics 2.5 undergraduate GPA Language requirement: <ul style="list-style-type: none"> TOEFL iBT 65 or IELTS 5.5 or PTEA 44 or Completion of Academic English Level 4 or Password overall level 6 	Semester 1	Course Title	Credit Hours	Progression Requirements <ul style="list-style-type: none"> Minimum 3.0 GPA in graduate level courses B or better in all courses No grades I or W permitted These courses are generally delivered through the INTO UAB Center and are for Pathway students only.															
	<table border="1"> <tr><td>ELI 401</td><td>Academic Reading/Writing I</td><td>3</td></tr> <tr><td>ELI 402</td><td>Academic Speaking/Listening I</td><td>3</td></tr> <tr><td>EGR 602</td><td>Methods for Engineering Practice I</td><td>3</td></tr> <tr><td></td><td>Engineering Major Course</td><td>3</td></tr> <tr><td colspan="2" style="text-align: right;">Total</td><td>12</td></tr> </table>	ELI 401	Academic Reading/Writing I		3	ELI 402	Academic Speaking/Listening I	3	EGR 602	Methods for Engineering Practice I	3		Engineering Major Course	3	Total		12	Semester 2	Course Title
ELI 401	Academic Reading/Writing I	3																	
ELI 402	Academic Speaking/Listening I	3																	
EGR 602	Methods for Engineering Practice I	3																	
	Engineering Major Course	3																	
Total		12																	
	<table border="1"> <tr><td>ELI 403</td><td>Academic Reading/Writing II</td><td>3</td></tr> <tr><td>ELI 404</td><td>Academic Speaking/Listening II</td><td>3</td></tr> <tr><td>EGR 603</td><td>Methods for Engineering Practice II</td><td>3</td></tr> <tr><td></td><td>Engineering Major Course</td><td>3</td></tr> <tr><td colspan="2" style="text-align: right;">Total</td><td>12</td></tr> </table>	ELI 403	Academic Reading/Writing II	3	ELI 404	Academic Speaking/Listening II	3	EGR 603	Methods for Engineering Practice II	3		Engineering Major Course	3	Total		12			
ELI 403	Academic Reading/Writing II	3																	
ELI 404	Academic Speaking/Listening II	3																	
EGR 603	Methods for Engineering Practice II	3																	
	Engineering Major Course	3																	
Total		12																	

Accelerated Pathway - 1 Semester Fall: August 23, 2016 Spring: January 3, 2017 Summer: May 2, 2017	Degree Program Components 36 credit hour program 9 credit hours apply from Pathway 27 credit hours remaining toward degree
--	--

Entry Requirements <ul style="list-style-type: none"> Four-year undergraduate degree in Engineering, Biology, Chemistry, Mathematics or Physics 2.5 undergraduate GPA Language requirement: <ul style="list-style-type: none"> TOEFL iBT 80 or IELTS 6.5 or PTEA 53 	Semester 1	Course Title	Credit Hours														
	<table border="1"> <tr><td>ELI 405</td><td>Academic English Skills</td><td>3</td></tr> <tr><td>EGR 602 or 603</td><td>Methods for Engineering Practice I or Methods for Engineering Practice II</td><td>3</td></tr> <tr><td></td><td>Engineering Major Course</td><td>3</td></tr> <tr><td></td><td>Engineering Major Course</td><td>3</td></tr> <tr><td colspan="2" style="text-align: right;">Total</td><td>12</td></tr> </table>	ELI 405	Academic English Skills	3	EGR 602 or 603	Methods for Engineering Practice I or Methods for Engineering Practice II	3		Engineering Major Course	3		Engineering Major Course	3	Total		12	
ELI 405	Academic English Skills	3															
EGR 602 or 603	Methods for Engineering Practice I or Methods for Engineering Practice II	3															
	Engineering Major Course	3															
	Engineering Major Course	3															
Total		12															

uab.edu/engineering/home/professional-programs

Graduate Pathway Programs

Master of Science in Civil Engineering				
Standard Pathway - 2 Semesters	Degree Program Components		Program Information	
Fall: August 23, 2016 Spring: January 3, 2017 Summer: May 2, 2017	30 credit hour program 12 credit hours apply from Pathway 18 credit hours remaining toward degree			
Entry Requirements <ul style="list-style-type: none"> Four-year undergraduate Engineering degree in Civil, Environmental, Mechanical, Structural, Transportation or related field 2.5 undergraduate GPA Language requirement: <ul style="list-style-type: none"> TOEFL iBT 65 or IELTS 5.5 or PTEA 44 or Completion of Academic English Level 4 or Password overall level 6 	Semester 1	Course Title	Credit Hours	
	ELI 401	Academic Reading/Writing I	3	
	ELI 402	Academic Speaking/Listening I	3	
	EGR 602	Methods for Engineering Practice I	3	
		Engineering Major Course	3	
			Total	12
		Semester 2	Course Title	Credit Hours
	ELI 403	Academic Reading/Writing II	3	
	ELI 404	Academic Speaking/Listening II	3	
	EGR 603	Methods for Engineering Practice II	3	
	Engineering Major Course	3		
		Total	12	
Progression Requirements <ul style="list-style-type: none"> Minimum 3.0 GPA in graduate level courses B or better in all courses No grades I or W permitted These courses are generally delivered through the INTO UAB Center and are for Pathway students only.				
Accelerated Pathway - 1 Semester Fall: August 23, 2016 Spring: January 3, 2017 Summer: May 2, 2017	Degree Program Components 30 credit hour program 9 credit hours apply from Pathway 21 credit hours remaining toward degree			
Entry Requirements <ul style="list-style-type: none"> Four-year undergraduate Engineering degree in Civil, Environmental, Mechanical, Structural, Transportation or related field 2.5 undergraduate GPA Language requirement: <ul style="list-style-type: none"> TOEFL iBT 80 or IELTS 6.5 or PTEA 53 	Semester 1	Course Title	Credit Hours	
	ELI 405	Academic English Skills	3	
	EGR 602 or 603	Methods for Engineering Practice I or Methods for Engineering Practice II	3	
		Engineering Major Course	3	
		Engineering Major Course	3	
			Total	12

uab.edu/engineering/home/graduate-civil

Master of Science in Electrical Engineering				
Standard Pathway - 2 Semesters	Degree Program Components		Program Information	
Fall: August 23, 2016 Spring: January 3, 2017 Summer: May 2, 2017	30 credit hour program 12 credit hours apply from Pathway 18 credit hours remaining toward degree			
Entry Requirements <ul style="list-style-type: none"> Four-year undergraduate Engineering degree in Computer, Electrical, Electronic or Computer Science or related field 2.5 undergraduate GPA Language requirement: <ul style="list-style-type: none"> TOEFL iBT 65 or IELTS 5.5 or PTEA 44 or Completion of Academic English Level 4 or Password overall level 6 	Semester 1	Course Title	Credit Hours	
	ELI 401	Academic Reading/Writing I	3	
	ELI 402	Academic Speaking/Listening I	3	
	EGR 602	Methods for Engineering Practice I	3	
		Engineering Major Course	3	
			Total	12
		Semester 2	Course Title	Credit Hours
	ELI 403	Academic Reading/Writing II	3	
	ELI 404	Academic Speaking/Listening II	3	
	EGR 603	Methods for Engineering Practice II	3	
	Engineering Major Course	3		
		Total	12	
Progression Requirements <ul style="list-style-type: none"> Minimum 3.0 GPA in graduate level courses B or better in all courses No grades I or W permitted These courses are generally delivered through the INTO UAB Center and are for Pathway students only.				
Accelerated Pathway - 1 Semester Fall: August 23, 2016 Spring: January 3, 2017 Summer: May 2, 2017	Degree Program Components 30 credit hour program 9 credit hours apply from Pathway 21 credit hours remaining toward degree			
Entry Requirements <ul style="list-style-type: none"> Four-year undergraduate Engineering degree in Computer, Electrical, Electronic or Computer Science or related field 2.5 undergraduate GPA Language requirement: <ul style="list-style-type: none"> TOEFL iBT 80 or IELTS 6.5 or PTEA 53 	Semester 1	Course Title	Credit Hours	
	ELI 405	Academic English Skills	3	
	EGR 602 or 603	Methods for Engineering Practice I or Methods for Engineering Practice II	3	
		Engineering Major Course	3	
		Engineering Major Course	3	
			Total	12

uab.edu/engineering/home/graduate#msee

Master of Science in Materials Engineering

Standard Pathway - 2 Semesters	Degree Program Components	Program Information																																				
Fall: August 23, 2016 Spring: January 3, 2017 Summer: May 2, 2017	30 credit hour program 12 credit hours apply from Pathway 18 credit hours remaining toward degree																																					
Entry Requirements <ul style="list-style-type: none"> Four-year undergraduate Engineering degree in Composites, Manufacturing, Materials, Polymers or Chemistry, Composites, Physics or related field 2.5 undergraduate GPA Language requirement: <ul style="list-style-type: none"> TOEFL iBT 65 or IELTS 5.5 or PTEA 44 or Completion of Academic English Level 4 or Password overall level 5 	<table border="1"> <thead> <tr> <th>Semester 1</th> <th>Course Title</th> <th>Credit Hours</th> </tr> </thead> <tbody> <tr> <td>ELI 401</td> <td>Academic Reading/Writing I</td> <td>3</td> </tr> <tr> <td>ELI 402</td> <td>Academic Speaking/Listening I</td> <td>3</td> </tr> <tr> <td>EGR 602</td> <td>Methods for Engineering Practice I</td> <td>3</td> </tr> <tr> <td></td> <td>Engineering Major Course</td> <td>3</td> </tr> <tr> <td colspan="2"></td> <td>Total 12</td> </tr> <tr> <th>Semester 2</th> <th>Course Title</th> <th>Credit Hours</th> </tr> <tr> <td>ELI 403</td> <td>Academic Reading/Writing II</td> <td>3</td> </tr> <tr> <td>ELI 404</td> <td>Academic Speaking/Listening II</td> <td>3</td> </tr> <tr> <td>EGR 603</td> <td>Methods for Engineering Practice II</td> <td>3</td> </tr> <tr> <td></td> <td>Engineering Major Course</td> <td>3</td> </tr> <tr> <td colspan="2"></td> <td>Total 12</td> </tr> </tbody> </table>	Semester 1	Course Title	Credit Hours	ELI 401	Academic Reading/Writing I	3	ELI 402	Academic Speaking/Listening I	3	EGR 602	Methods for Engineering Practice I	3		Engineering Major Course	3			Total 12	Semester 2	Course Title	Credit Hours	ELI 403	Academic Reading/Writing II	3	ELI 404	Academic Speaking/Listening II	3	EGR 603	Methods for Engineering Practice II	3		Engineering Major Course	3			Total 12	Progression Requirements <ul style="list-style-type: none"> Minimum 3.0 GPA in graduate level courses B or better in all courses No grades I or W permitted <p>These courses are generally delivered through the INTO UAB Center and are for Pathway students only.</p>
Semester 1	Course Title	Credit Hours																																				
ELI 401	Academic Reading/Writing I	3																																				
ELI 402	Academic Speaking/Listening I	3																																				
EGR 602	Methods for Engineering Practice I	3																																				
	Engineering Major Course	3																																				
		Total 12																																				
Semester 2	Course Title	Credit Hours																																				
ELI 403	Academic Reading/Writing II	3																																				
ELI 404	Academic Speaking/Listening II	3																																				
EGR 603	Methods for Engineering Practice II	3																																				
	Engineering Major Course	3																																				
		Total 12																																				
Accelerated Pathway - 1 Semester Fall: August 23, 2016 Spring: January 3, 2017 Summer: May 2, 2017	30 credit hour program 9 credit hours apply from Pathway 21 credit hours remaining toward degree																																					
Entry Requirements <ul style="list-style-type: none"> Four-year undergraduate Engineering degree in Composites, Manufacturing, Materials, Polymers or Chemistry, Composites, Physics or related field 2.5 undergraduate GPA Language requirement: <ul style="list-style-type: none"> TOEFL iBT 80 or IELTS 6.5 or PTEA 53 	<table border="1"> <thead> <tr> <th>Semester 1</th> <th>Course Title</th> <th>Credit Hours</th> </tr> </thead> <tbody> <tr> <td>ELI 405</td> <td>Academic English Skills</td> <td>3</td> </tr> <tr> <td>EGR 602 or 603</td> <td>Methods for Engineering Practice I or Methods for Engineering Practice II</td> <td>3</td> </tr> <tr> <td></td> <td>Engineering Major Course</td> <td>3</td> </tr> <tr> <td></td> <td>Engineering Major Course</td> <td>3</td> </tr> <tr> <td colspan="2"></td> <td>Total 12</td> </tr> </tbody> </table>	Semester 1	Course Title	Credit Hours	ELI 405	Academic English Skills	3	EGR 602 or 603	Methods for Engineering Practice I or Methods for Engineering Practice II	3		Engineering Major Course	3		Engineering Major Course	3			Total 12																			
Semester 1	Course Title	Credit Hours																																				
ELI 405	Academic English Skills	3																																				
EGR 602 or 603	Methods for Engineering Practice I or Methods for Engineering Practice II	3																																				
	Engineering Major Course	3																																				
	Engineering Major Course	3																																				
		Total 12																																				

uab.edu/engineering/home/departments-research/mse/grad

Master of Science in Mechanical Engineering

Standard Pathway - 2 Semesters	Degree Program Components	Program Information																																				
Fall: August 23, 2016 Spring: January 3, 2017 Summer: May 2, 2017	30 credit hour program 12 credit hours apply from Pathway 18 credit hours remaining toward degree																																					
Entry Requirements <ul style="list-style-type: none"> Four-year undergraduate Engineering degree in Mechanical, Mechanics, Structural or related field 2.5 undergraduate GPA Language requirement: <ul style="list-style-type: none"> TOEFL iBT 65 or IELTS 5.5 or PTEA 44 or Completion of Academic English Level 4 or Password overall level 5 	<table border="1"> <thead> <tr> <th>Semester 1</th> <th>Course Title</th> <th>Credit Hours</th> </tr> </thead> <tbody> <tr> <td>ELI 401</td> <td>Academic Reading/Writing I</td> <td>3</td> </tr> <tr> <td>ELI 402</td> <td>Academic Speaking/Listening I</td> <td>3</td> </tr> <tr> <td>EGR 602</td> <td>Methods for Engineering Practice I</td> <td>3</td> </tr> <tr> <td></td> <td>Engineering Major Course</td> <td>3</td> </tr> <tr> <td colspan="2"></td> <td>Total 12</td> </tr> <tr> <th>Semester 2</th> <th>Course Title</th> <th>Credit Hours</th> </tr> <tr> <td>ELI 403</td> <td>Academic Reading/Writing II</td> <td>3</td> </tr> <tr> <td>ELI 404</td> <td>Academic Speaking/Listening II</td> <td>3</td> </tr> <tr> <td>EGR 603</td> <td>Methods for Engineering Practice II</td> <td>3</td> </tr> <tr> <td></td> <td>Engineering Major Course</td> <td>3</td> </tr> <tr> <td colspan="2"></td> <td>Total 12</td> </tr> </tbody> </table>	Semester 1	Course Title	Credit Hours	ELI 401	Academic Reading/Writing I	3	ELI 402	Academic Speaking/Listening I	3	EGR 602	Methods for Engineering Practice I	3		Engineering Major Course	3			Total 12	Semester 2	Course Title	Credit Hours	ELI 403	Academic Reading/Writing II	3	ELI 404	Academic Speaking/Listening II	3	EGR 603	Methods for Engineering Practice II	3		Engineering Major Course	3			Total 12	Progression Requirements <ul style="list-style-type: none"> Minimum 3.0 GPA in graduate level courses B or better in all courses No grades I or W permitted <p>These courses are generally delivered through the INTO UAB Center and are for Pathway students only.</p>
Semester 1	Course Title	Credit Hours																																				
ELI 401	Academic Reading/Writing I	3																																				
ELI 402	Academic Speaking/Listening I	3																																				
EGR 602	Methods for Engineering Practice I	3																																				
	Engineering Major Course	3																																				
		Total 12																																				
Semester 2	Course Title	Credit Hours																																				
ELI 403	Academic Reading/Writing II	3																																				
ELI 404	Academic Speaking/Listening II	3																																				
EGR 603	Methods for Engineering Practice II	3																																				
	Engineering Major Course	3																																				
		Total 12																																				
Accelerated Pathway - 1 Semester Fall: August 23, 2016 Spring: January 3, 2017 Summer: May 2, 2017	30 credit hour program 9 credit hours apply from Pathway 21 credit hours remaining toward degree																																					
Entry Requirements <ul style="list-style-type: none"> Four-year undergraduate Engineering degree in Mechanical, Mechanics, Structural or related field 2.5 undergraduate GPA Language requirement: <ul style="list-style-type: none"> TOEFL iBT 80 or IELTS 6.5 or PTEA 53 	<table border="1"> <thead> <tr> <th>Semester 1</th> <th>Course Title</th> <th>Credit Hours</th> </tr> </thead> <tbody> <tr> <td>ELI 405</td> <td>Academic English Skills</td> <td>3</td> </tr> <tr> <td>EGR 602 or 603</td> <td>Methods for Engineering Practice I or Methods for Engineering Practice II</td> <td>3</td> </tr> <tr> <td></td> <td>Engineering Major Course</td> <td>3</td> </tr> <tr> <td></td> <td>Engineering Major Course</td> <td>3</td> </tr> <tr> <td colspan="2"></td> <td>Total 12</td> </tr> </tbody> </table>	Semester 1	Course Title	Credit Hours	ELI 405	Academic English Skills	3	EGR 602 or 603	Methods for Engineering Practice I or Methods for Engineering Practice II	3		Engineering Major Course	3		Engineering Major Course	3			Total 12																			
Semester 1	Course Title	Credit Hours																																				
ELI 405	Academic English Skills	3																																				
EGR 602 or 603	Methods for Engineering Practice I or Methods for Engineering Practice II	3																																				
	Engineering Major Course	3																																				
	Engineering Major Course	3																																				
		Total 12																																				

uab.edu/engineering/home/departments-research/me/graduate#prep

Graduate Pathway Programs

Master of Science in Public Health															
Standard Pathway - 2 Semesters Fall: August 23, 2016 Spring: January 3, 2017	Degree Program Components 42 credit hour program 12 credit hours apply from Pathway 30 credit hours remaining toward degree		Program Information												
Entry Requirements <ul style="list-style-type: none"> • Four-year undergraduate degree or equivalent • 2.5 undergraduate GPA • Language requirement: <ul style="list-style-type: none"> • TOEFL iBT 65 or • IELTS 5.5 or • PTEA 44 or • Completion of Academic English Level 4 or • Password overall level 6 	Semester 1	<table border="1"> <thead> <tr> <th>Course Title</th> <th>Credit Hours</th> </tr> </thead> <tbody> <tr> <td>ELI 401 Academic Reading/Writing I</td> <td>3</td> </tr> <tr> <td>ELI 402 Academic Speaking/Listening I</td> <td>3</td> </tr> <tr> <td>HB 600 Social and Behavioral Science Core</td> <td>3</td> </tr> <tr> <td>EPI 600 Introduction to Epidemiology</td> <td>3</td> </tr> <tr> <td style="text-align: right;">Total</td> <td>12</td> </tr> </tbody> </table>	Course Title	Credit Hours	ELI 401 Academic Reading/Writing I	3	ELI 402 Academic Speaking/Listening I	3	HB 600 Social and Behavioral Science Core	3	EPI 600 Introduction to Epidemiology	3	Total	12	Progression Requirements <ul style="list-style-type: none"> • Minimum 3.0 GPA in graduate level courses • B or better in all courses • No grades I or W permitted <p><small>These courses are generally delivered through the INTO UAB Center and are for Pathway students only.</small></p>
	Course Title	Credit Hours													
ELI 401 Academic Reading/Writing I	3														
ELI 402 Academic Speaking/Listening I	3														
HB 600 Social and Behavioral Science Core	3														
EPI 600 Introduction to Epidemiology	3														
Total	12														
Semester 2	<table border="1"> <thead> <tr> <th>Course Title</th> <th>Credit Hours</th> </tr> </thead> <tbody> <tr> <td>ELI 403 Academic Reading/Writing II</td> <td>3</td> </tr> <tr> <td>ELI 404 Academic Speaking/Listening II</td> <td>3</td> </tr> <tr> <td>ENH 600 Fundamentals of Environmental Health Sciences</td> <td>3</td> </tr> <tr> <td>HCO 600 Introduction to Public Health and Population-Based Health Programs</td> <td>3</td> </tr> <tr> <td style="text-align: right;">Total</td> <td>12</td> </tr> </tbody> </table>	Course Title	Credit Hours	ELI 403 Academic Reading/Writing II	3	ELI 404 Academic Speaking/Listening II	3	ENH 600 Fundamentals of Environmental Health Sciences	3	HCO 600 Introduction to Public Health and Population-Based Health Programs	3	Total	12		
Course Title	Credit Hours														
ELI 403 Academic Reading/Writing II	3														
ELI 404 Academic Speaking/Listening II	3														
ENH 600 Fundamentals of Environmental Health Sciences	3														
HCO 600 Introduction to Public Health and Population-Based Health Programs	3														
Total	12														
Accelerated Pathway - 1 Semester Fall: August 23, 2016 Spring: January 3, 2017	Degree Program Components 42 credit hour program 10 credit hours apply from Pathway 32 credit hours remaining toward degree														
Entry Requirements <ul style="list-style-type: none"> • Four-year undergraduate degree or equivalent • 2.5 undergraduate GPA • Language requirement: <ul style="list-style-type: none"> • TOEFL iBT 80 or • IELTS 6.5 or • PTEA 53 	Semester 1	<table border="1"> <thead> <tr> <th>Course Title</th> <th>Credit Hours</th> </tr> </thead> <tbody> <tr> <td>ELI 405 Academic English Skills</td> <td>3</td> </tr> <tr> <td>HB 600 Social and Behavioral Science Core</td> <td>3</td> </tr> <tr> <td>EPI 600 Introduction to Epidemiology</td> <td>3</td> </tr> <tr> <td>BST 601 Biostatistics</td> <td>4</td> </tr> <tr> <td style="text-align: right;">Total</td> <td>13</td> </tr> </tbody> </table>	Course Title	Credit Hours	ELI 405 Academic English Skills	3	HB 600 Social and Behavioral Science Core	3	EPI 600 Introduction to Epidemiology	3	BST 601 Biostatistics	4	Total	13	
	Course Title	Credit Hours													
ELI 405 Academic English Skills	3														
HB 600 Social and Behavioral Science Core	3														
EPI 600 Introduction to Epidemiology	3														
BST 601 Biostatistics	4														
Total	13														





Improve your English in a safe and welcoming American community



5

levels of
Academic English

English Language Program



UAB's Academic English Program is accredited by the Commission on English Language Program Accreditation

Learn English in the US while enjoying the real American college experience in beautiful Alabama



Academic English

Program Description

The Academic English program at INTO UAB prepares international students for university study in the US. This academically rigorous program provides international students with high-quality English language instruction and the academic skills to succeed at UAB through development of:

- Listening
- Speaking
- Reading
- Writing
- Vocabulary and pronunciation skills
- Correct grammar usage
- Academic study skills

Program Highlights

- Intensive English instruction to prepare for university study
- Academic advising and support throughout the program
- Average classes are 12-15 students
- Highly trained and experienced instructors

Program Courses

Level 1-2

- Integrated Skills
- Vocabulary Building
- Writing
- Reading

Level 3-5

- Grammar in Use
- Academic Listening and Speaking
- Academic Reading
- Academic Writing

Program Outcomes

After finishing this intensive program, successful students will be able to:

- Interact comfortably in the US classroom with professors and fellow students
- Understand US values in an academic setting
- Present their spoken and written ideas accurately and effectively in English
- Write research papers with proper use of citations and references
- Use the internet and UAB libraries databases to conduct academic research
- Read, understand and critically evaluate academic texts
- Understand and use vocabulary common to academic disciplines
- Take useful and accurate notes in academic lectures and presentations
- Develop and deliver oral presentations



Key Program Facts

Start Dates

- May 3, 2016
- August 23, 2016
- January 3, 2017
- May 2, 2017

Program Duration

- Fall and Spring semesters are 16 weeks
- Summer semester is 14 weeks
- 3 terms per year
- Minimum enrollment of one semester

Academic Entry Requirement

- High school diploma

English Language Entry Requirement

- None; students will be assessed and placed upon arrival.

Age Requirement

- Minimum age 17

Program Structure

- 5 levels of instruction from high beginner to advanced
- Each semester includes 18-20 credit hours of instruction
- Electives are available for higher levels
- Conversation partner program and other activities for extra practice offered each week

Progression Requirements from Academic English

To Undergraduate Standard Pathway

- Completion of Academic English Level 4

To Graduate Standard Pathway

- Completion of Academic English Level 4

To Direct Graduate Admission

- Completion of Academic English Level 5, although individual program entry requirements may vary

Academic English Levels	IELTS	iBT	PBT	PTEA	Password
Level 2	3.0-3.5	30-40	397-433	31-37	Level 3
Level 3	4.0-4.5	41-51	437-467	38-40	Level 4
Level 4	5.0-5.5	52-59	470-493	41-43	Level 5
Level 5	5.5-6.0	60-80	497-550	44-53	Level 6


Academic English Grid Notes:

- This chart is to help provide an estimate of the Academic English level that students will enter upon arrival. All students take a placement test during Orientation that will place them in the most suitable AE level.
- Completion of Level 4 leads to both Undergraduate and Graduate Standard Pathway programs.
- Completion of Level 5 leads to Direct Entry for Graduate programs.



Personalized services
help students succeed
in coursework and
personal growth

Student Life

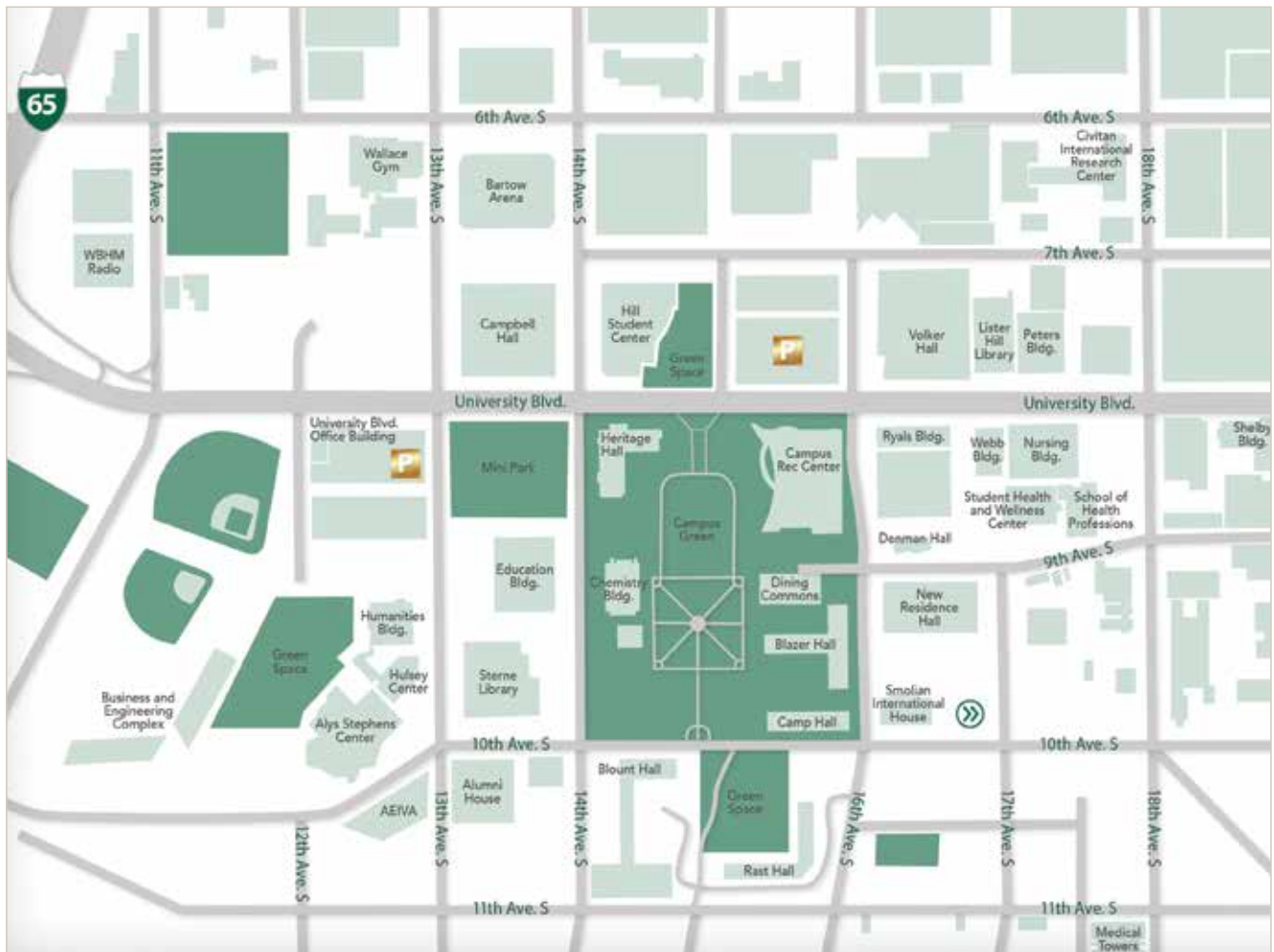


Take the opportunity to make life more enriching, interesting, beautiful and just plain fun for fellow students and the world around you.



\$48.5M

invested in the new Student Center
that opened in December 2015

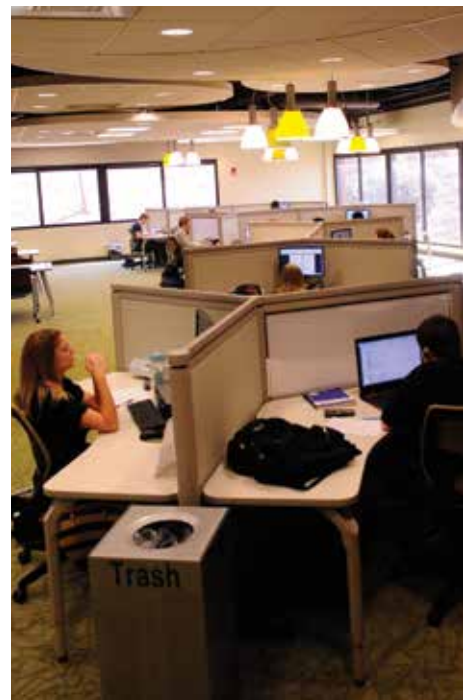


▲ UAB campus map

▼ Students outside the Academic Success Center



▼ The University Writing Center in Sterne Library



Academic Resources

The University of Alabama at Birmingham offers international students a great education and a supportive academic and social experience. In addition to its world-class faculty, the university helps students outside the classroom by providing a wide variety of academic services and resources.

Libraries

uab.edu/libraries

The Sterne Library houses a collection of more than one million items that supports teaching and research in the arts and humanities, business, education, engineering, natural sciences and mathematics, and social and behavioral sciences. Sterne Library also provides electronic access to the contents of more than 35,044 serials and 72,000 electronic books.

The Lister Hill Library of the Health Sciences, Alabama's largest biomedical library, provides services and resources for students, research and teaching faculty, and clinicians in medicine, nursing, optometry, dentistry, public health, health professions and joint health sciences.

The Reynolds-Finley Historical Library is a nationally respected collection of rare books, manuscripts and artifacts in the medical sciences, including an extensive collection of items relating to Civil War medicine and practices of the nineteenth century.

Academic Success Center

uab.edu/studentsuccess

The University Academic Success Center promotes and fosters student success, enhances academic performance and inspires students to achieve their academic, professional and personal goals. Our resources are intentionally designed to facilitate experiences that encourage student persistence and prepare students for life after graduation.

Academic Workshops

These workshops are designed to provide students with an interactive experience to enhance their academic learning. Workshops are organized by topic and designed to meet the demands of college-level academics. Common topics presented are study skills, learning styles and strategies, time management, career searching, managing finances and exam preparation. All workshops are facilitated by faculty or staff at UAB and are offered throughout the semester.

Academic Coaching

Academic Coaching involves meeting with students in free one-on-one sessions to assist them with developing or enhancing skill sets and achieving success.

Tutoring

The University Academic Success Center provides free course-specific tutoring services to UAB undergraduate students. Tutoring is offered in both one-on-one and group sessions. Tutoring sessions are tailored to address undergraduate students' questions and needs as we aim to foster independent learning.

Writing Center

uab.edu/writingcenter

Located on the first floor of the Sterne Library, the University Writing Center is UAB students' go-to place for help with any kind of writing. In a friendly and professional one-on-one setting, the UWC teaches students to use writing to discover, apply and communicate knowledge. Whether you need face-to-face or online and e-tutoring sessions, the UWC services are free and available to all UAB students.

▼ The campus offers ample space for students to study.



▼ Student support is offered all around campus.



▼ The Student Health and Wellness Center is home to primary care and student counseling services.



University Services

The University of Alabama at Birmingham offers a variety of programs, services and facilities to provide international students with an unrivaled study experience.

One Stop Student Services

uab.edu/onestop

As a student, there's a lot to learn and remember. Sometimes it's tough to figure out where to go for help, especially if they have multiple questions. When students need help or don't know where to start, they can visit One Stop. Here, students receive assistance with their academic record, financial aid, registration, student accounting, ONE Card and other related topics all in one place. Students can make One Stop their first and possibly only stop.

One Stop can assist students with:

Information - BlazerID, ONE Card, Immunization Requirements, Directory Listings and Change of Name or Address.

Money - Account Payments and Analysis, Blazer Bucks, Financial Aid, Student Loans, Scholarships and Bucks for Books

Classes - Class Schedule, Registration, Dropping and Adding Classes and Hold Removal

Grades - Academic Transcripts, Forgiveness Forms and Satisfactory Academic Progress

Degree Selection - Changing Majors, Graduation Planning System, Application for Degree and Commencement Ceremonies

Life - Housing, Dining, Parking, Residency Application and Notarizing Documents

Multicultural and Diversity Programs

uab.edu/students/student-life/multicultural-and-diversity-programs

Student Multicultural and Diversity Programs serves the UAB community, especially students, by developing programs and resources that promote multicultural and social justice awareness, education and appreciation. Additionally, the program supports the growth of students' attitudes, ideas and behaviors as they relate to multicultural issues and personal and social identities.

Student Advocacy

uab.edu/students/services/advocacy-rights-and-conduct

The Office of Student Advocacy, Rights and Conduct works to ensure that all students are treated fairly and equitably within all areas of the university. They assist students in understanding the various policies and procedures within the university such as academic appeals, judicial appeals, grievances, mediation and other areas.

The office also helps students by referring them to the proper person or office to assist them in a given situation, and when appropriate, assists in negotiations or other aspects of problem solving.

International Students

uab.edu/students/international/international-students

International Student and Scholar Services offers a broad range of programs and services found to be helpful during a student's stay, including the International FYI series, International Women's Group, Volunteer Income Tax Assistance program and numerous activities and events.

Student Health and Wellness Center

uab.edu/studenthealth

The SHWC offers comprehensive primary care services in:

- Acute and chronic care
- Women's Health
- Basic mental health evaluation and treatment
- Immunizations/Titers
- Treatment of minor emergencies
- Diagnostic Lab testing
- X-ray services
- After-hours consultation is provided through provider on call coverage, 24 hours a day/7 days a week

All enrolled students have access to medical office visits, provider evaluation and development of a treatment plan at no additional cost beyond the payment of regular UAB tuition, regardless of insurance coverage.

Student Counseling Center

uab.edu/studenthealth/counseling

The SHWC Counseling Service assists in developing students' potential in physical, academic, spiritual, psychosocial, emotional and vocational areas. Students can receive help with individual and couples counseling, crisis counseling, wellness programs, group opportunities and educational resources. Confidential counseling services are available to all currently enrolled UAB students at no cost.

The Student Health and Wellness Center advocates for student well-being



One Stop Student Services is designed to be the go-to place for information and assistance



INTO UAB Student Services

Whether a student is joining INTO UAB to achieve academic, professional or personal goals, our dedicated team of instructors, staff and administrators is committed to helping each and every student succeed.

Student Services Team

The INTO UAB Student Services team provides a range of programs and services promoting social, personal and academic well-being. The team will help students settle in to life in Birmingham, provide social opportunities and a variety of resources tailored to the specific needs of international students. Whether it's a question about making an appointment with a doctor, finding a place to live, renewing a visa or anything else, there will always be someone available to help.

Orientation Program

Orientation involves a variety of important events that prepare students to be successful at UAB, including information about maintaining visa status, registering for UAB classes, health requirements and insurance coverage. Attendance at the International Student Orientation is required.

Language Advisors

Language advisors at the INTO UAB Center are available to assist new and prospective students and parents who may not be able to communicate effectively in English.

Visa and Immigration Support

International Student and Scholar Services, in conjunction with the INTO UAB Student Services team, will provide information, support and guidance on maintaining immigration status while in the US. This can include questions about renewing a student visa, making sure the I-20 or DS-2019 is always current, bringing dependents, employment, traveling and more. They will issue any documentation needed to support the visa application. Students needing further assistance can make an appointment with an advisor at International Student and Scholar Services. Workshops occur throughout the year on topics such as employment, scholarships and travel.

Learning Resource Center

All INTO UAB students have access to tutoring services through the Learning Resource Center. There are one-on-one appointments available by request as well as walk-in hours.

Friendship Partners Program

There are countless opportunities to practice spoken English and meet American students while at INTO UAB.

The Friendship Partners program pairs international students with interested community families and individuals. The program seeks to promote friendship and understanding between people of differing nationalities.

Additionally, INTO UAB Student Services keeps students informed about events, activities and volunteer opportunities on campus and in the Birmingham community.

Trips and Activities

While the main reason for coming to UAB is to study, social activities will help students adjust to life in the US and allow them to develop a network of friends to make their stay more enjoyable. INTO UAB organizes trips and activities designed to help students make the most of their time in the US. From zip lining to camping, students at INTO UAB experience all the fun, beauty and excitement that Birmingham has to offer.

The INTO UAB Learning Resource Center grants free access to tutors, software, books and so much more



The Smolian International House will be the INTO UAB home in 2016-17

▼ The annual Gurney Derby is one of the many traditions on the UAB campus.



▼ The Student Activities Council helps to organize events like the Homecoming Parade.



Life on Campus

UAB offers a friendly and welcoming community where students will find a variety of activities outside the classroom. Students are highly involved on campus; it is a great way for them to make new friends and gain hands-on experience.

Student Organizations

Be a leader. Be a joiner. Just be involved. UAB offers so many opportunities for interaction. At UAB, there are over 150 clubs and organizations available to join.

Student Media

Students interested in a career in media can explore options through the various student-run media on campus. Students can get involved with Blaze Radio, UAB TV, the Kaleidoscope Newspaper or the Aura Literary Arts Review.

Service and Volunteering

Becoming engaged in community service—both on and off campus—and volunteering in general allows students to grow and develop outside the classroom, providing life-changing experiences. UAB has both long-term and short-term opportunities for those with a passion for helping others.

Leadership Opportunities

Opportunities to lead at UAB are abundant, and taking on a leadership role can help student advancement both inside and outside of the classroom. The UAB leadership education and development programs are geared to transform students for the better and to make a difference in their lives.

Campus Ministry

The Campus Ministry Association at UAB is composed of professional campus ministers serving the university as representatives of their respective faith communities. The CMA seeks to be inclusive in its membership, which is available to those of all religious traditions. In a cooperative spirit, the CMA works with UAB to enable and enhance, without prejudice, the spiritual life of all persons within the university community.

Student Activities Council

The Student Activities Council works as a cohesive unit to plan programs stemming from the Office of Student Activities. These programs include traditions like Welcome Week, UAB Homecoming, the Camille Armstrong Memorial Scholarship Stepshow and Springfest; entertainment such as concerts, comedians and movies; special events like Talent Search, the Fall Concert and the Miss UAB Scholarship Pageant; and educational programming including aspects of alcohol and drug awareness, health and wellness, professional development and cultural awareness.

100

Countries represented on campus by students and faculty

There are over 150 UAB clubs and organizations for students

▼ Tuition includes a membership to the Campus Recreation Center.



▼ UAB's basketball team, along with all 16 other varsity sports, competes at the highest level of college sports, NCAA Division 1, in Conference USA



Sports and Recreation

Getting involved is an important part of the US college experience. At UAB, students have access to hundreds of diverse clubs, organizations, varsity and intramural sports, and indoor and outdoor recreational activities.

Campus Recreation

UAB Campus Recreation offers students the best opportunities for recreation and fitness. Students will find everything they need to stay active under one roof—free weights, court sports, swimming pools, group fitness classes, nutrition education, fitness areas, a climbing wall and much more.

The 14,146-square meter recreation center covers three floors: housing four basketball/volleyball courts, five racquetball courts, one squash court, four aerobics studios, 1,672-square meters of weight and cardio-fitness areas, game room, KidZone, aquatics center with both lap and leisure components, Center Court gym used for indoor soccer, floor hockey and badminton, Power Zone, an indoor track and an 11-meter high climbing wall.

Club Sports

A club sport is a registered student organization that may provide a program of instruction, recreation or competition in a specific sport or activity. Club Sports vary in size and instruction in order to meet the needs and interests of students, faculty and staff. Each club establishes its own organizational structure, leadership and performance level.

UAB currently has 21 club sports including cricket, lacrosse, soccer and rugby.

Outdoor Pursuits and Custom Trips

The Outdoor Pursuits Center provides challenging, fun and educational programs that teach outdoor skills, teamwork and self-confidence, encourage personal growth and enable participants to stay fit. The center includes an indoor climbing facility, gear rentals and team building programs. Students can rent outdoor recreation equipment for use in the forests, mountains, rivers and parks near campus and across Alabama.

UAB Adventure Recreation is also offering custom trip services. Custom trips offer experienced staff who lead groups of ten or more on a fun adventure, including caving, canoeing, climbing and more. Custom trip prices vary based on location, duration and equipment needed.

Intercollegiate Athletics

The university is proud to have nearly 400 student-athletes participating in the highest level of college sports, NCAA Division I, in Conference USA. Athlete selection and scholarships are determined by the university coaching staffs and are highly competitive. NCAA eligibility rules apply.

Men's Teams

- Baseball
- Basketball
- Football
- Golf
- Soccer
- Tennis

Women's Teams

- Basketball
- Beach Volleyball
- Bowling
- Cross Country
- Golf
- Soccer
- Softball
- Tennis
- Track and Field (indoor and outdoor)
- Volleyball



Housing

UAB's residence halls are more than a place to sleep and eat a meal. By living on campus you will be a part of a community that will enhance your educational, social, and cultural experiences.

Living on Campus

Undergraduate Pathway and Academic English students are required to live on campus for their first two consecutive semesters. General English and Graduate Pathway students may live in the residence halls if space is available.

To live in student housing, students must be admitted to UAB and be in good standing. "Good standing" means that students aren't on academic or disciplinary suspension. Students must be enrolled for at least 12 credit hours as an undergraduate student during the fall and spring semesters.

You will be required to satisfy eligibility standards throughout the term of your student-housing contract, and you must inform UAB Student Housing and Residence Life if your status changes.

To best enhance the student experience, every attempt will be made to house students from the INTO UAB program with American roommates. This allows for better integration into American society and provides a great opportunity to practice English language skills.

Residence Hall Communities

Living in UAB's residence halls provides students a variety of resources and a support structure beyond the classroom.

Academic Success: Students living on campus typically achieve higher grade point averages than students who live off campus.

Community: Residence halls host a variety of educational and social activities with the goal of building community among students, the institution and the greater Birmingham community.

Diversity: Each residence hall is a diverse, multicultural community of different backgrounds, beliefs and orientations where students can learn from one another in an inclusive and open environment.

Guidance and Support: Residence hall staff is available 24 hours per day to help guide students personally and academically.

Leadership: Opportunities for involvement include Hall Council, the Residence Hall Association and Student Security.

Living Green: All residence halls are committed to recycling and other sustainable practices.

Safety and Security

The safety and security of UAB students is a top priority. Exterior building doors are monitored by an online electronic access control system 24 hours per day. Each residence hall has a front desk that is staffed around the clock. All residents and guests must check in with desk staff before entry. UAB police officers routinely patrol all areas.

Housing at UAB is not guaranteed and rooms are assigned on a first-come, first-served basis. Every effort is made to provide students with their first choice in housing; however, early application will increase the likelihood of placement in desired locations.

To view housing options and more, visit: uab.edu/housing



▲ Blazer Hall

Residence Hall Options

Blazer Hall is where Undergraduate Pathway and Academic English students will be able to reside. The suite-style residence hall can accommodate more than 700 students.

Layout: Two-bedroom, two-bath suites (four students)

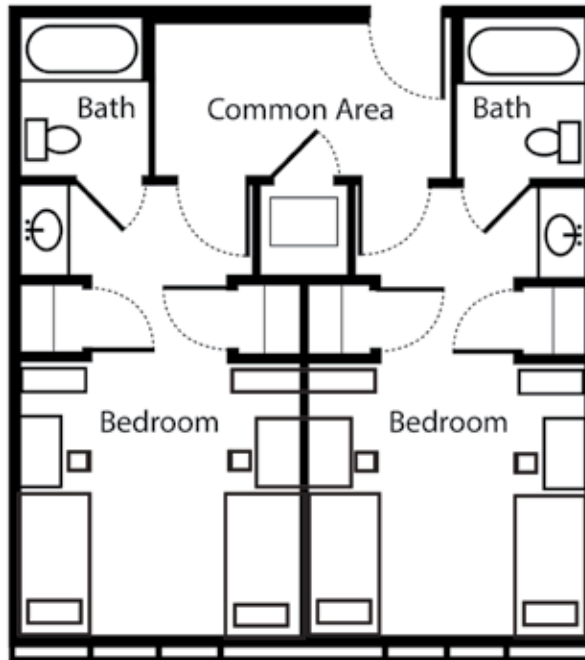
Bedroom Furnishings (for each student):

- twin-size extra long bed
- four-drawer dresser
- desk with hutch
- desk chair
- granite vanity with sink and storage

Suite Furnishings:

- full-size refrigerator
- sink
- cabinets/storage
- heating/air conditioning controls
- cable TV connection
- Ethernet ports and WiFi

Blazer Hall Floor Plan



Denman Hall is a single or double occupancy, one-bedroom style apartment for students in the INTO UAB Graduate Pathway program.

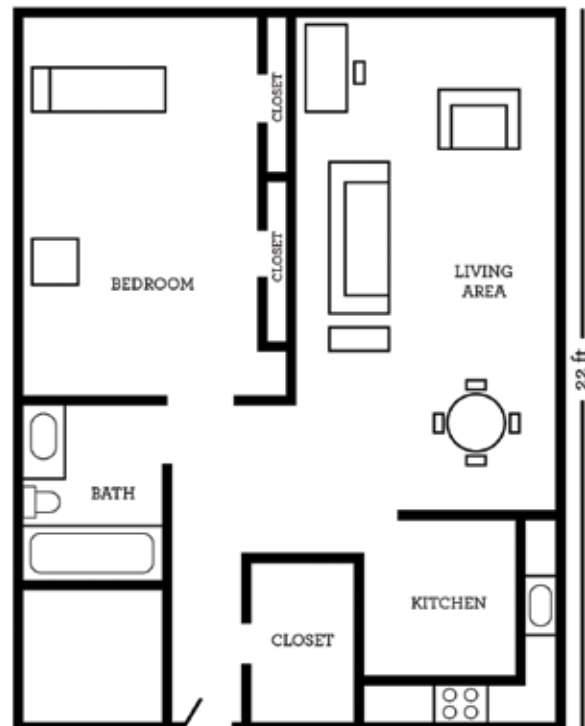
Bedroom Furnishings:

- twin-size extra long bed
- dresser or chest
- desk
- nightstand

Suite Furnishings:

- sofa and chair
- end table
- dining table with four chairs
- stove with oven
- full-size refrigerator
- cable TV connection
- Ethernet ports and WiFi

Denman Hall Floor Plan



▼ The Commons on the Green is the largest dining hall on the UAB campus.



▼ There are two Starbucks locations on campus, including one in the new Hill Student Center.



Dining

All students at INTO UAB have the opportunity to participate in unlimited meal plans featuring all-you-care-to-eat, buffet-style dining halls.

Campus Dining

Dining on-campus gives students the advantage of never having to worry about keeping cash on hand. At UAB there are 12 restaurants on campus, all of which accept the ONE Card for payment. There also are two convenience stores on campus, one in Camp Hall and Hill Student Center.

Meal Plan Options

Fall and Spring meal plans are a combination of Meals and Meal Plan Dining Dollars. Meals are accessed via the student's ONE Card and can be used at the Commons on The Green for all-you-care-to-eat meals.

Meal Plan Dining Dollars is a declining balance account that can be used for purchases at all UAB dining facilities.

Campus Dining Options

Commons on the Green

The Commons on the Green is UAB's large all-you-care-to-eat style dining hall. Choose from grilled foods, deli favorites, pizza and pasta, classic home-style dishes, international cuisine, and soups and salads.

This dining hall also features a station that caters to those with food allergies. Dishes that do not contain milk, eggs, wheat, soy, shellfish, peanuts, tree nuts or gluten can be found at the Simple Servings station.

Other Restaurants on Campus

- The Den
- Einstein Bros. Bagels
- Full Moon Bar-B-Que
- Jump Asian Express
- Mein Bowl
- Panera Bread
- Sandella's Flatbread Cafe
- Simply to Go
- Starbucks
- WOW Cafe
- Zime Bistro



12

on-campus restaurants



Commons on the Green is your home for all-you-care-to-eat buffet

▼ Students receive career assessment and advising from professionals.



▼ Career fairs, where students interview with professionals, are common at UAB.



▼ The new \$48.5M Student Center opened in December 2015.



Internships and Working

Being a part of the UAB community is more than attending class and earning a degree. Students have many available resources to find employment both during and after their studies, as well as internships that are required for some degree programs.

Working while Studying

Many international students would like to work in the US during or after their studies. While this is determined at the discretion of American immigration officers, there are opportunities to work during and after studies at UAB and INTO UAB. International students on an F-1 or J-1 student visa are allowed to work part-time on campus (20 hours/week or less) while school is in session and full-time (40 hours/week) during breaks, as long as they maintain their F-1/J-1 status. F-1 students may work on campus without any special authorization. J-1 students must get employment authorization in advance from the Center for International Programs.

Career and Professional Development

uab.edu/careerservices/

The CPD staff provides the resources and guidance to ensure students gain the experience they need to successfully navigate the competitive job market.

INTO UAB Student Employment

Positions for employment at INTO are available, but are limited and competitive. There are two different positions available within the INTO UAB Center.

Student workers are in charge of working at the welcome desk. They answer phones, work directly with other students and help INTO UAB staff with day-to-day activities such as planning programs, trips and events. Student workers are paid the US minimum wage and work no more than 20 hours per week.

Student ambassadors are in charge of arrivals, orientations and reaching out to future students. They help incoming students by answering questions and providing any information needed before the student arrives in Birmingham.

Graduate and Postdoctoral Careers

uab.edu/phdcareers/

Career and professional development is an important part of a student's graduate and postdoctoral training. At UAB's Office of Postdoctoral Education PhD Careers, the goal is to offer a variety of programs and services to help students make the most of their tenure at UAB.

Internships

UAB Career Services offers assistance with finding internships. All students are encouraged to pursue an internship opportunity during the time of their studies.

Working after Graduation

Depending on the type of visa, students may be eligible for Optional Practical Training or Academic Training. These opportunities generally provide work authorization for 12 months after graduation from a degree program. STEM students can apply for a 17-month extension.

To be eligible for OPT, students must meet the following requirements:

- Be a current student in good academic standing and have maintained F-1 visa status throughout their studies
- Apply for OPT during a vacation period, after finishing a degree or, if they are a graduate student, in the time period between completing all coursework and finishing their thesis or dissertation

Students intending to practice engineering in the US will be required to have their undergraduate transcripts evaluated by the National Council of Examiners for Engineering at their own cost. Visit: ncees.org/credentials-evaluations

▼ UAB alumnus and Grammy Award-winning arranger and producer Dr. Henry Panion, III



▲ UAB alumnus Larry Delucas is a former NASA astronaut and research scientist.

Alumni and Parents

With more than 118,000 alumni, UAB student success can be found in dozens of countries all around the world. Many alumni take part in the mentoring and networking program, helping ensure that the professional network for students has a solid foundation upon graduation.

UAB National Alumni Society

From international business leaders, educators and entrepreneurs to professional athletes, UAB has a long list of distinguished alumni.

UAB alumni are proudly counted as leaders of some of the world's most influential and profitable companies, players on professional sports teams and distinguished government statesmen.

The median mid-career salary level of UAB alumni is \$72,900 and more than half have jobs that make a positive impact on the world around them.

Noteworthy Alumni

William A. Bell

Mayor of Birmingham, Alabama

Regina Benjamin, MD

US Surgeon General

Larry DeLucas, OD, PhD

Astronaut and research scientist

Deidre Downs

Miss America 2005

Sam Hunt

Country musician and former UAB quarterback

Graeme McDowell

Professional golfer

Dr. Henry Panion, III

University Professor of Music, music director for Stevie Wonder, Grammy Award-winning arranger and producer

Parent Association

The UAB Parents Association encourages communication and understanding between parents and the university, enhances the college experience for students and their families, provides opportunities for parent involvement with UAB, distributes information on student development trends and regularly keeps parents up to date on important news affecting students and allows parents to become part of a dynamic network where they can interact with other parents with similar interests and concerns.

Members also receive special benefits including invitations to exclusive events, a regular newsletter, and more. But the biggest benefit is active involvement in the enrichment of the college experience for students.

Visit: UAB.edu/parents



"I am glad I found myself here. I am happy I will become an alumna of this great school."

Biodoumoye George Bokolo, Nigeria

Computer and Information Science major



Apply via the forms
in this brochure



Apply online at:
intohigher.com/uab/apply



7-10 day
turnaround
for completed
applications

Your Application



Successful applicants receive an offer letter



I-20s are sent within 3 days of confirming enrollment



Study at The University of Alabama at Birmingham

UAB and INTO UAB Application Process

1. Determine Course of Study

Decide what academic or English language program you want to apply for. Read about UAB's degree-seeking and English language programs: uab.edu/esl

2. Check Requirements

Be sure your academic and language scores meet admission requirements for your program of choice.

Detailed admission requirements can be found at: uab.edu/apply

3. Apply

To apply, visit: uab.edu/apply

Submit your application and required documents to: intoadmissions@uab.edu

4. Send Required Documents

Detailed program requirements and instructions can be found at: uab.edu/apply

- Transcripts (copies in native and English language)
- Diplomas (copies in native and English language)
- Language proficiency scores, if applicable
- Test scores, if applicable
- Passport
- Evidence of funding

5. Application Processing

As soon as your application is received, we will notify you by email that it has been received and you may be asked to provide any missing application documents. Your transcripts and other documents must be evaluated, and you will be contacted once an admission decision is made.

6. Offer of Admission

If qualified, we will send you an offer of admission via email.

7. Confirm

Direct UAB Applicants: Return the acceptance form. Once your signed acceptance form has been received we will send you your I-20.

INTO UAB Applicants: Return your signed acceptance form and pay the required deposit. Once your signed acceptance form and deposit have been received we will send you your I-20 to the shipping address provided.

8. Prepare for Arrival

You will receive a Pre-Departure Guide to help prepare you for living and studying in the US.

Application Checklist for Pathway and Direct Undergraduate Degree-seeking Programs

Please read carefully and make sure you have included the following documents in your application package:

1. Application form, completed in full (including signature) and checked for accuracy	<input type="checkbox"/>
2. Copy of passport for student (and spouse/dependents, if applicable)	<input type="checkbox"/>
3. Copy of bank statement and Affidavit of Support or letter of sponsorship	<input type="checkbox"/>
4. Copies of high school or university diploma and transcripts (English and native language)	<input type="checkbox"/>
5. Copies of transcripts of all relevant qualifications translated into English as well as in native language	<input type="checkbox"/>
6. Copies of TOEFL/IELTS/PTEA	<input type="checkbox"/>
7. Proof of an adequate alternative insurance policy, if appropriate	<input type="checkbox"/>
8. Copies of visa, I-20 and current DSO information (transfer students)	<input type="checkbox"/>

Application Checklist for English Language Program

Please read carefully and make sure you have included the following documents in your application package:

1. Application form, completed in full (including signature) and checked for accuracy	<input type="checkbox"/>
2. Copy of passport for student (and spouse/dependents, if applicable)	<input type="checkbox"/>
3. Copy of bank statement and Affidavit of Support or letter of sponsorship	<input type="checkbox"/>
4. Proof of high school/secondary school graduation (Academic English only)	<input type="checkbox"/>
5. Copies of visa, I-20 and current DSO information (transfer students)	<input type="checkbox"/>

UAB and INTO UAB Application Form 1 of 3

Please print legibly and complete all relevant sections of this form (including signature) in black ink. Submit your application and required documents to: intoadmissions@uab.edu

Check one:

INTO UAB Application UAB Undergraduate Degree-seeking Application

If an education counselor is assisting you with your application, fill out the details below. If not, leave this section blank and go to Section 1.

Company/Organization: _____ URN Number: _____

Section 1

A. Student Details

Please enter all names exactly as they appear on your passport.

Last/Family Name _____

First/Given Name _____

Middle Names _____

Gender M F

Date of Birth ____/____/____ mm/dd/yyyy

B. Visa and Immigration Information

Country of Birth _____

Country of Nationality/Citizenship _____

US Residency Status
 Non-US Citizen or Non-resident Permanent Resident US Citizen

Do you have dual citizenship? Yes No

If yes, please list additional country of citizenship: _____

Are you currently living or studying in the United States? Yes No

If YES, please include a copy of your visa, I-20 and your DSO. _____

Will any of your dependents (spouse/children) come to the US with you?
 Yes No How many? _____

If yes, please include copies of their passports with your application. _____

C. Student Permanent Home Country Address

This is the student permanent home country address, it is required for creating the I-20. This address CANNOT be the address of the Education Counselor.

Street _____

City _____ State/Province _____

Country _____ Postal Code _____

Telephone _____

Student Email _____

D. Shipping Address

This is where the I-20 will be mailed.

Education Counselor/Contact Name _____

Street _____

City _____ State/Province _____

Country _____ Postal Code _____

Telephone _____

Contact Email _____

Section 2

English Language Program Academic English

Please select your intended start date.

May 3, 2016 August 23, 2016 January 3, 2017 May 2, 2017

Section 3

Academic Programs

A. Undergraduate Pathway Programs

Select one Pathway program and one start date below.

	Fall: Aug 2016	Spring: Jan 2017	Summer: May 2017
Business	<input type="checkbox"/>	<input type="checkbox"/>	<input type="checkbox"/>
Computer and Information Science	<input type="checkbox"/>	<input type="checkbox"/>	<input type="checkbox"/>
Engineering	<input type="checkbox"/>	<input type="checkbox"/>	<input type="checkbox"/>
General Studies	<input type="checkbox"/>	<input type="checkbox"/>	<input type="checkbox"/>
Public Health	<input type="checkbox"/>	<input type="checkbox"/>	<input type="checkbox"/>
Science	<input type="checkbox"/>	<input type="checkbox"/>	<input type="checkbox"/>

Planned Academic Subject/Major: _____

B. Graduate Pathway Programs

Please select only one box below.

	Fall: Aug 2016	Spring: Jan 2017	Summer: May 2017
College of Arts and Sciences			
Computer and Information Science	<input type="checkbox"/>	<input type="checkbox"/>	<input type="checkbox"/>
School of Business			
Business Administration (MBA)	<input type="checkbox"/>	<input type="checkbox"/>	<input type="checkbox"/>
School of Health Professions			
Biotechnology	<input type="checkbox"/>	<input type="checkbox"/>	<input type="checkbox"/>
School of Engineering			
Civil	<input type="checkbox"/>	<input type="checkbox"/>	<input type="checkbox"/>
Design and Commercialization	<input type="checkbox"/>	<input type="checkbox"/>	<input type="checkbox"/>
Electrical	<input type="checkbox"/>	<input type="checkbox"/>	<input type="checkbox"/>
Materials	<input type="checkbox"/>	<input type="checkbox"/>	<input type="checkbox"/>
Mechanical	<input type="checkbox"/>	<input type="checkbox"/>	<input type="checkbox"/>
School of Public Health			
Public Health	<input type="checkbox"/>	<input type="checkbox"/>	<input type="checkbox"/>

C. UAB Undergraduate Degree-seeking Program

Please visit uab.edu/students/academics/majors-minors for a list of undergraduate majors.

First Year/Freshman Transfer Post-Baccalaureate

Start Date:
 Fall: August 2016 Spring: January 2017 Summer: May 2017

Intended Major _____

UAB and INTO UAB Application Form 2 of 3

Section 4

Student Education History

Please list **ALL** secondary and post-secondary schools, colleges or universities you have attended or will attend prior to entering the university, including current studies.

You must provide a transcript from each post-secondary school, college or university you have attended, even if you did not complete a term.

A. Secondary Schools/High Schools

Most recent secondary school attended:

School Name _____

Country _____

Dates Attended from ____/____/____ mm/dd/yyyy

to ____/____/____ mm/dd/yyyy

Graduation Date ____/____/____ mm/dd/yyyy

School Name _____

Country _____

Dates Attended from ____/____/____ mm/dd/yyyy

to ____/____/____ mm/dd/yyyy

If you have more secondary schools, please submit them in this format on a separate sheet of paper and include with your application.

B. Colleges and Universities

Most recent post-secondary school attended:

College/University Name _____

Country _____

Dates Attended from ____/____/____ mm/dd/yyyy

to ____/____/____ mm/dd/yyyy

Graduation Date ____/____/____ mm/dd/yyyy

Degree Earned _____

College/University Name _____

Country _____

Dates Attended from ____/____/____ mm/dd/yyyy

to ____/____/____ mm/dd/yyyy

Degree Earned _____

College/University Name _____

Country _____

Dates Attended from ____/____/____ mm/dd/yyyy

to ____/____/____ mm/dd/yyyy

Degree Earned _____

If you have more colleges, universities or post-secondary schools, please submit them in this format on a separate sheet of paper and include with your application.

C. Gaps in Study

Will it be more than four (4) months between the time you completed study at your most recent educational institution, and the start of your program at INTO UAB?

Yes No

If yes, will you have attended a school, college or university in that time?

Yes No

Is that school or university indicated on this application or a separate sheet of paper?

Yes No

By selecting this box you testify that you have included information on all of your academic studies and will not pursue further study prior to joining this university. Failure to provide this information can result in dismissal from the university.

Section 5

Test Scores

Please indicate all test scores completed. Copies of test results may be used for evaluation, but official results must be received prior to registration.

A. English Language Test Scores

Language scores are valid for two years after the test date and will be considered expired if over two years old at the time of program start date.

TOEFL IELTS PTEA

I do not plan on taking an English language proficiency test.

B. Academic Test Scores (scores are valid for 5 years)

Undergraduate Students **Graduate Students**

SAT ACT GMAT GRE

Section 6

A. Housing

Undergraduate Pathway Students and Academic English Students also applying for an Undergraduate Pathway

Students are required to live in on-campus housing during their first two semesters and will be placed into on-campus double room accommodations for the length of their program.

Academic English and Graduate Pathway Students

Students may choose to live in on-campus housing during their study and will be placed into on-campus double room accommodations.

Please indicate the number of semesters you would like housing: 1 2 3

Graduate Housing Options:

Single room, private bathroom apartment

Double room, shared bathroom apartment

B. Student Services

Meal Plan Memberships

Please note that your housing selection will include a meal plan. If you are not living in on-campus housing, you will have the option to purchase a meal plan when you arrive.

Airport Pick-up

Complimentary transportation from Birmingham-Shuttlesworth International Airport will be provided to all students admitted to INTO UAB programs. Students will be provided with detailed instructions on submitting arrival details at the time of confirmation.

Medical Insurance

The university requires all full-time students to be covered by health insurance which meets The University of Alabama at Birmingham requirements. Students unable to provide evidence of adequate alternative coverage at the time of their application will automatically be enrolled in the The University of Alabama at Birmingham health insurance plan. Information may be found at:

uab.edu/studenthealth/insurance-and-waivers

UAB and INTO UAB Application Form 3 of 3

Section 7

Declarations: Required of all students

Academic Disciplinary Action

Are you currently the subject of pending criminal charges or an indictment, or subject to arrest for any criminal offense? Yes No

Have you been convicted of, pled guilty to or pled no contest to a felony or sexual offense? Yes No

Have you ever been found responsible for a disciplinary violation, academic or behavioral, at a high school, secondary school, college, university or other postsecondary institution which resulted in your probation, suspension, removal, dismissal or expulsion? Yes No

Legal Violation

Have you ever been charged with a violation of the law, misdemeanor and/or felony (even if adjudication was withheld) that resulted in, or, if still pending could result in, probation, community service, restitution, a jail sentence or the revocation or suspension of your driver's license (you are not required to include traffic violations that only resulted in a fine)? Yes No

If your answer to any of the preceding is YES, details of any offenses should be included on a separate sheet. If your records have been expunged pursuant to applicable law, you are not required to answer YES to these questions. If you are unsure whether to answer "yes", we strongly suggest that you answer YES and fully disclose all incidents. By doing so, you can avoid any risk of disciplinary action or revocation of your offer of admission.

Payment of Fees

I agree to pay all tuition, accommodation and any other fees incurred as they become due according to the Terms and Conditions four weeks prior to program start date.

Submission of Information

I verify that the information on this form is complete and true. I understand that falsifying information may lead to disciplinary action, including dismissal from the university. I hereby agree to immediately notify the UAB Office of Enrollment Management if a criminal conviction or an expulsion from a high school, college, university or other postsecondary institution occurs after the date I submit this application.

Authorization for Release of Information

I understand that this application is for admission to The University of Alabama at Birmingham (UAB) and is valid only for the term indicated. I also understand and agree that I will be bound by UAB's regulations concerning application deadline dates and admission requirements. I agree to the release of any secondary or post-secondary transcripts and related credentials to The University of Alabama at Birmingham; furthermore, I authorize UAB to contact any secondary and/or post-secondary institution that I have attended for the purposes of confirming receipt of the official records needed to complete my application and discussing any subsequent admission or scholarship decision.

I agree that UAB and INTO UAB (to the extent it may be covered by FERPA) may release my student record as necessary to facilitate admissions, enrollment and continued progress through any academic program at UAB or INTO UAB. This authorization specifically permits the sharing of information between UAB and INTO UAB, or to any other entity directly responsible for my recruitment or continued participation in the UAB or INTO UAB program.

I also authorize my application and application materials for any INTO UAB program to be considered and reviewed by other INTO University Partnerships Ltd. joint ventures in the United States in the case that my application to INTO UAB is unsuccessful.

Terms and Conditions

I state that I have read and understood the INTO UAB brochure and agree to abide by the 2016-17 Terms and Conditions found online: intohigher.com/uab/terms

Signed

Date ____/____/____ mm/dd/yyyy

(Student)

Student's Name

(Please Print)

Students under 18

All students under the age of 18 must have all applications and contracts signed by a parent/guardian or sponsor. In addition, a parental consent form will be required.

Signed

Date ____/____/____ mm/dd/yyyy

(Parent/Guardian/Sponsor - if student is under 18)

Parent/Guardian/Sponsor name

(Please Print)



A brighter future for just \$25

We're delighted you are considering INTO The University of Alabama at Birmingham for your education and look forward to helping you get started on your path to success.

But did you know there are 57 million children globally not enrolled in school?

Parents everywhere share a desire to give their children the best possible start in life but, sadly, a basic education is still beyond the reach of many young people around the world.

As part of our commitment to learning, we created INTO Giving, a charity that helps improve both access to and quality of education for young people living in difficult circumstances.

When children go to school and learn, they create opportunities that transform and empower their lives and their communities.

Donate \$25 today and help provide the education they deserve.

Every penny of your gift will go straight to the INTO Giving educational projects. Making a gift is easy, simply visit our secure website: www.into-giving.com.

Help transform lives by supporting our educational projects around the world.

INTO

GIVING

The University of Alabama at Birmingham

Affidavit of Support



I, _____ hereby certify that I am willing
 (Print name of family member/personal sponsor)

and able to provide the amount of \$ _____ in US dollars to meet the expenses incurred

by _____
 (Print student's full name)

during the length of the student's study to which their application pertains.

My relationship to the student is that of: _____. I have authorized the release of my supporting financial documents to verify that the promised financial resources are available to me. I affirm that I know and understand the contents of this affidavit signed by me and that the statements are true and correct.

Required:

Signature of family member/personal sponsor: _____ Date: _____

Declaration of Finances

US immigration law requires the University to verify that any student seeking an F-1 Visa has sufficient funds to finance their studies for the duration of their program.

If it is determined that you are admissible to INTO UAB, we will provide you with an I-20 (F-1) certificate of eligibility document only after you submit satisfactory evidence that you have adequate funds for your proposed program of study. Acceptable financial documents must not have been issued more than six (6) months before the date you intend to enroll at INTO UAB and must accompany this form.

Additional Support Needed for Dependents

If you have a spouse or children that will accompany you to the United States, you must include a minimum of an additional \$5,000 per year for your spouse and \$5,000 per year for each additional dependent. Please note that this estimate for dependents is the minimum amount you must show. If purchasing insurance in the US for dependents, actual costs for your dependents will likely increase.

Certification of Financial Support

Example Sources of Funding and Required Documentation. All amounts must be in United States currency or show applicable conversion rate.

Source of Funding	Required Documentation
Personal bank statement (checking/savings)	Certified bank letter/bank statement
Parent(s)/sponsor(s)	Affidavit of Support (attached) and certified bank letter/bank statement
Government agency (home country)	Letter of award
Graduate assistantship/fellowship	Letter of award (copy)

For cost estimates for I-20 purposes, visit: uab.edu/students/international/international-students

Country Scales - Undergraduate Pathway

Country	UAB Undergraduate Pathway
GCE / A Levels	Must have 2 A level grades of D or better
IGCSE/ GCSE / O Level	5 subjects, 2 grades D or better, 3 grades E or better - Math, English, Science and two electives
International Baccalaureate	20, or Average grades of 3 or higher, if by individual grades
Azerbaijan	Senior High School Graduation Diploma with minimum 3.5 out of 5 or 60/100
Bahrain	Tawjihya with minimum 50%
Bangladesh	Higher Secondary Certificate with minimum 45%
Brazil	Certificado de Conclusão de Ensino Médio with minimum 6 out of 10 or 60%
China	GaoSan (Year 12) Senior High School Graduation/Completion (Year 12) minimum 70%
China	GaoEr (Year 11) Senior High School Graduation/Completion (with Huikao) minimum 70%
Colombia	Bachillerato Académico with 6 out of 10
Ecuador	High School transcript and graduation certificate (Bachiller) with average 7 on a 10 points scale
France	baccalaureat de l'enseignement du second with 10 out of 20
Gambia	Senior Secondary School Certificate (WAEC) 3 grades of 6/C or better and 2 grades of 7/D or better. Subjects must include English, Math, Social Studies, and Science
Germany	Zeugnis der Allgemeinen Hochschulreife (Abitur) or Zeugnis der Fachhochschulreife 3.5 out of 6
Hong Kong	HKDSE with 4 Core subjects (Math, English, Science and Liberal Science with a of 2 or higher)
India	Higher Secondary Certificate or the Standard 12 with 40%, C2 or 6 out of 9 (CISCE)
Indonesia	SMA or STTB with grades for Years 9-12 and an average of 6.0 on a 10 points scale or 2.0 on a scale of 4.0
Iran	Peesh-daneshgahii Pre-University Certificate with a 10 out of 20
Italy	Diploma di Maturità/Diploma di Perito with an average of 6 on a 10 point scale
Japan	Kōtō Gakkō Sotsugyō Shōmei-sho with minimum 2.75 out of 5.0
Jordan	General Secondary Education Certificate (Tawjih) with an average of 50% out of 100%
Kazakhstan	3.5 out of 5 or 70/100%, Attestat
Kenya	6 out of 12 or C on the Kenya Certificate of Secondary Education
Kuwait	Shahadat-al-thanawia-al-āama with 65%
Kyrgyzstan	3.5 out of 5, Attestat
Malaysia	SPM - Require 5 subjects with 2Cs and 3 Ds. Subjects must include Math, English, and Science
Mongolia	School leaving certificate with average 75%
Myanmar	TBD
Nigeria	Senior Secondary School Certificate (WAEC) 3 grades of 6/C or better and 2 grades of 7/D or better. Subjects must include English, Math, Social Studies, and Science
Norway	Vitnemal 3/6 in core courses
Oman	General Secondary School Certificate 60% out of 100%
Pakistan	42/100%, SSC and HSC, HSSC or Intermediate
Qatar	Al-Thanawiya Aama Qatari - General Secondary School Certificate. An average of 60% out of 100%
Russia	3.5 out of 5, Attestat, Certificate of Complete General Secondary Education
Saudi Arabia	65/100%, General Secondary Education, Shahadat Al- Marhalat Al - Thanawiyat
Singapore	Singapore-Cambridge GCE O Level with 5 subjects and an aggregate score of 32.5 or less. Subjects must include English, math and science.
South Africa	National Senior Certificate (NSC) with an average of 50%
South Korea	High School Certificate minimum 65% or average ranking 7
Sweden	Completion of upper secondary school (gymnasieskolorna), with the leaving certificate Avgångsbetyg / Slutbetyg 65%
Taiwan	Senior high school leaving certificate with a minimum of 60% average
Tanzania	See GCE O-levels
Thailand	Certificate of Secondary Education with 55%
Turkey	Lise Diplomas/Secondary Diploma with average 3 on a 5 point scale or 55% out of a 100%
UAE	60/100%, General Secondary Education
Ukraine	3 on a 5 point scale or 5 out of 12, Attestat pro Povnu Zagal'nu Seredniu Osvitu
Uzbekistan	3.5 out of 5, O'rta Ma'lumot To'g'risida Shahodatnoma
Vietnam	6 out of 10, Bang Tot Nghiep Trung Hoc Pho Thong
Zimbabwe	TBD

Country Scales - Direct Entry

Country	UAB Direct Entry
GCE / A Levels	Must have 2 A level grades of C or better
IGCSE/ GCSE / O Level	5 subjects 3 grades of C or better and, 2 grades of E or better - Math, English, Science and two electives
International Baccalaureate	24, or average grades of 4 or higher, if by individual grades
Azerbaijan	Senior High School Graduation Diploma with minimum 4 out of 5 or 70/100
Bahrain	Tawjihiya with minimum 55%
Bangladesh	Higher Secondary Certificate with minimum 50%
Brazil	Certificado de Conclusão de Ensino Médio with minimum 6.5 out of 10 or 65%
China	GaoSan (Year 12) Senior High School Graduation/Completion (Year 12) minimum 75%
Colombia	Bachillerato Académico with 7 out of 10
Ecuador	High School transcript and graduation certificate (Bachiller) with average 7.5 on a 10 points scale
France	baccalaureat de l'enseignement du second with 11 out of 20
Gambia	TBD
Germany	Zeugnis der Allgemeinen Hochschulreife (Abitur) or Zeugnis der Fachhochschulreife 3 out of 6
Hong Kong	HKDSE with 4 Core subjects (Math, English, Science and Liberal Science with a of 3 or higher)
India	Higher Secondary Certificate or the Standard 12 with 50%, C1 or 6.5 out of 9 (CISCE)
Indonesia	SMA or STTB with grades for Years 9-12 and an average of 6.5 on a 10 points scale or 2.5 on a scale of 4.0
Iran	Peesh-daneshgahii Pre-University Certificate with a 13 out of 20
Italy	Diploma di Maturità/Diploma di Perito with an average of 6.5 on a 10 point scale
Japan	Kōtō Gakkō Sotsugyō Shōmei-sho with minimum 3.5 out of 5.0
Jordan	General Secondary Education Certificate (Tawjihi) with an average of 65% out of 100%.
Kazakhstan	4 out of 5 or 80/100%, Attestat
Kenya	7 out of 12 or C+ on the Kenya Certificate of Secondary Education
Kuwait	Shahadat-al-thanawia-al-a'ama with 75%
Kyrgyzstan	4 out of 5, Attestat
Malaysia	SPM - Require 5 subjects with 5Cs or 2Bs and 3Cs. Subjects must include Math, English, and Science
Mongolia	School leaving certificate with average 80%
Myanmar	45/100% or 3 out of 5, Basic Education Standard X Examination Diploma A
Nigeria	TBD
Norway	Vitnemal 4/6 in all core courses
Oman	General Secondary School Certificate 73% out of 100%
Pakistan	45/100%, SSC and HSC, HSSC or Intermediate
Qatar	Al-Thanawiya Aama Qatari - General Secondary School Certificate. An average of 70% out of 100%
Russia	4 out of 5, Attestat, Certificate of Complete General Secondary Education
Saudi Arabia	75/100%, General Secondary Education, Shahadat Al- Marhalat Al - Thanawiyiyat
Singapore	Singapore-Cambridge GCE O Level with 5 subjects and an aggregate score of 32.5 or less. Subjects must include English, math and science.
South Africa	National Senior Certificate (NSC) with an average of 60%
South Korea	High School Certificate minimum 75% or average ranking 6
Sweden	Completion of upper secondary school (gymnasieskolorna), with the leaving certificate Avgångsbetyg / Slutbetyg 75%
Taiwan	Senior high school leaving certificate with a minimum of 65% average
Tanzania	See GCE O-levels
Thailand	Certificate of Secondary Education with 65%
Turkey	Lise Diplomas/Secondary Diploma with average 3.5 on a 5 point scale or 63% out of a 100%
UAE	75/100%, General Secondary Education
Ukraine	3.5 on a 5 point scale or 6.5 out of 12, Attestat pro Povnu Zagal'nu Seredniu Osvitu
Uzbekistan	4 out of 5, O'rta Ma'lumot To'g'risida Shahodatnoma
Vietnam	6.5 out of 10, Bang Tot Nghiep Trung Hoc Pho Thong
Zimbabwe	General Certificate of Education Ordinary Level, 5 subjects with an average of 4.5 (grade 1 is high). Subjects must include English, Math and Science.

This guide is provided by The University of Alabama at Birmingham Admissions for general reference purposes only. Meeting the requirements listed here does not necessarily indicate that an applicant has met all admission requirements or that an applicant will qualify for admission to UAB or INTO UAB.

When referring to the following guide, be aware that this is not inclusive of all grading or admission requirements. Grading systems and educational structures vary widely around the world and within countries and we evaluate each application individually to determine if the applicant meets the standards for success at The University of Alabama at Birmingham. Please also be aware that requirements by country are updated and adjusted appropriately throughout an academic year and might not be current in this brochure.

English Waiver Guidelines

English Waiver Exemptions	UAB Undergraduate Pathway Program - Standard	UAB Undergraduate Pathway Program - Accelerated	UAB Undergraduate Direct Entry
IELTS	5.5	6	6
TOEFL	60	77	77
Password	6	No	No
PTEA (Pearson)	44	51	51
IB	English HL: 4	English HL: 5	English HL: 5
IGCSE/GCSE	English First Language with C or better. Not predicted scores. (3 years or newer)	English First Language with C or better. ESL C or higher. Not predicted scores.	English First Language with C or better. ESL C or higher. Not predicted scores.
A Levels (A/AS)	English First Language or Literature in English with C or better. Not predicted scores.	English First Language with C or better. Not predicted scores.	English First Language with C or better. Not predicted scores.
US High School	Completion of diploma and/or two or more years of secondary transcripts reflecting English medium and satisfactory grades in secondary English coursework.	Completion of diploma and/or two or more years of secondary transcripts reflecting English medium and satisfactory grades in secondary English coursework.	Completion of diploma and/or two or more years of secondary transcripts reflecting English medium and satisfactory grades in secondary English coursework.
English-Speaking Canadian or American-International High School	3 final years of high school in English, mainstream English classes, with grades of C or better in non-ESL classes.	3 final years of high school in English, mainstream English classes, with grades of B or better in non-ESL classes.	3 final years of high school in English, mainstream English classes, with grades of B or better in non-ESL classes.
SAT	400 Critical Reading	450 Critical Reading	450 Critical Reading
ACT	17 Reading and 16 English/Writing	19 Reading and 18 English/Writing	19 Reading and 18 English/Writing
HKDSE	English Level 3 or better	English Level 3 or better	English Level 3 or better
Malaysia SPM	English 119 with C or better	English 119 with C or better	English 119 with C or better
Australia	Yes	Yes	Yes
Botswana	Yes	Yes	No
Canada, except Quebec (French)	Yes	Yes	Yes
Cameroon	Yes	Yes	No
Commonwealth Caribbean (Anglophone), including Antigua, Bahamas, Barbados, Belize, Bermuda, Cayman Islands, Jamaica, Trinidad & Tobago	Yes	Yes	Yes
Ghana	Yes	Yes	No
Kenya	Yes	Yes	No
Irish Republic	Yes	Yes	Yes
Malawi	Yes	Yes	No
New Zealand	Yes	Yes	Yes
Nigeria	Yes	Yes	No
Sierra Leone	Yes	Yes	No
South Africa (If Afrikaans is not native language)	Yes	Yes	No
Swaziland	Yes	Yes	No
Tanzania	Yes	Yes	No
Uganda	Yes	Yes	No
United Kingdom (England, Scotland, Ireland, Wales)	Yes	Yes	Yes
Zambia	Yes	Yes	No
Zimbabwe	Yes	Yes	No

Dates, Tuition and Fees

The University of Alabama at Birmingham

Rates are an estimate and subject to change. All prices in US dollars.

By Academic Year There are two semesters per academic year (Fall, Spring), each about 16 weeks long with a shorter Summer semester of 14 weeks.

The University of Alabama at Birmingham Tuition and Fees

The following prices are based on 2016-17 Cost of Attendance values and are subject to change.

Cost Description	Tuition and Fees	Housing and Meals	Books and Supplies	Health Insurance	Other	Total Expenses
Undergraduate Direct Admission (30 credits, 15 credits per semester)	\$22,615	\$11,600	\$1,200	\$1,750	\$1,000	\$38,165
Graduate Direct Admission (18 credits, 9 credits per semester)	\$17,125	\$6,200	\$1,400	\$1,750	\$1,000	\$27,475

Start Dates for The University of Alabama at Birmingham

Semester	Start Date	Undergraduate Application Deadline	Graduate Application Deadline	Application Fee*
Fall 2016	August 29, 2016	June 1, 2016	Varies by Program	\$30-85
Spring 2017	January 9, 2017	November 1, 2016	Varies by Program	\$30-85
Summer 2017	May 8, 2017	March 15, 2017	Varies by Program	\$30-85

*Graduate application fees vary by program.

Estimated Costs

UAB and INTO UAB Programs

Rates are an estimate and subject to change. All prices in US dollars. Please visit intohigher.com/uab/costs for more information.

Estimated Costs of Attendance for 2016-17

Cost Description	Tuition and Fees	Housing and Meals	Books and Supplies	Health Insurance	Other	Total Expenses
Undergraduate Direct Admission (2 Semesters) 30 credits	\$22,615	\$11,600	\$1,200	\$1,750	\$1,000	\$38,165
Undergraduate Standard Pathway (2 Semesters) 30-33 credits	\$23,000	\$13,650	\$1,200	\$2,060	\$1,000	\$40,910
Undergraduate Accelerated Pathway (1 Semester) 15-17 credits	\$13,250	\$6,825	\$600	\$1,030	\$500	\$22,205
Graduate Direct Admission (2 Semesters) 18 credits	\$17,125	\$6,200	\$1,400	\$1,750	\$1,000	\$27,475
Graduate Standard Pathway (2 Semesters) 24 credits	\$24,500	\$7,300	\$1,400	\$2,060	\$1,000	\$36,260
Graduate Accelerated Pathway (1 Semester) 12-13 credits	\$14,100	\$3,650	\$700	\$1,030	\$500	\$19,980
Academic English (1 Semester)	\$6,850	\$6,825	\$600	\$1,030	\$500	\$15,805

Dates, Tuition and Fees

INTO The University of Alabama at Birmingham

Rates are an estimate and subject to change. All prices in US dollars.

By Academic Year There are two main semesters per academic year (Fall, Spring), each about 16 weeks long with a shorter Summer semester of 14 weeks.

Tuition for Academic Programs		
Program	1 Semester (Accelerated Pathway)	2 Semesters (Standard Pathway)
Undergraduate Pathway Program	\$13,250	\$23,000
Graduate Pathway Program	\$14,100	\$24,500

Tuition for English Language Program			
Program	1 Semester	2 Semesters	3 Semesters
Academic English	\$6,850	\$13,700	\$20,550

Housing and Dining Services				
Housing and dining rates are subject to change.				
Program	Summer 2016	Fall 2016	Spring 2017	Summer 2017
Undergraduate Double Room/Shared Bathroom Suite*	\$6,825	\$6,825	\$6,825	\$6,825
Graduate Single Room/Bathroom Apartment**	\$5,950	\$5,950	\$5,950	\$5,950
Graduate Double Room/Shared Bathroom Apartment**	\$3,650	\$3,650	\$3,650	\$3,650

*Undergraduate student meal plan: Blazer #2: 10 meals/week + \$300 Flex dollars/semester.

**Graduate student meal plan includes \$500 meal plan dining dollars.

Miscellaneous Fees and Expenses 2016-17		
	One Time	Per Academic Term
International Express Mail	\$100	-----
INTO Insurance (Estimated)	-----	\$1,030
Books (Estimated)	-----	\$400-600

INTO UAB Scholarships

UAB International Scholarship

INTO UAB Scholarships are available for exceptional INTO UAB Pathway students. Qualifications and amounts vary between regions. For more information on scholarships in your area, please contact your local education counselor or INTO representative.

UAB Scholarships

UAB International Scholarship

uab.edu/students/paying-for-uab/scholarships/item/1416

The UAB International Scholarship, valued at \$5,000 USD per year, is available to applicants enrolling as first-year, full-time, degree-seeking students. Applicants who graduate from a secondary or high school outside of the United States, have a minimum grade point average of 3.0 on a 4.0 scale, have not enrolled in post-secondary work, and currently live outside of the United States, are automatically considered as soon as they are accepted to UAB. Students must be accepted prior to May 1 for the August intake. All scholarships are awarded on a first-come, first-served basis as funds are available and are renewable for a total of four years (or eight academic semesters). Students who are receiving governmental scholarships or other external support are not eligible to receive this award.

IB Scholarship

uab.edu/students/academics/transfer-and-other-credits/item/659-ib-credits

UAB values students who love to learn, who are curious and engaged, and who care about their communities, and IB students are the perfect fit. UAB offers countless ways for students to learn through engagement with our local, national, and global community—through service-learning, study abroad, internships and ample undergraduate research opportunities. UAB is proud to recognize IB students with special scholarship opportunities. The priority deadline for entering freshmen to apply for an IB Scholarship is March 1 of your senior year in high school. For scholarship consideration, please remember that you must also be admitted to UAB by this deadline for the upcoming summer or fall semester.

Start Dates for Academic Programs

Accelerated Pathway programs (in green) are one semester, Standard Pathway programs (in black) are two semesters. All Pathway programs can be started in the semester indicated below.

Program	Fall 2016 Aug 23, 2016 - Dec 16, 2016	Spring 2017 Jan 3, 2017 - Apr 28, 2017	Summer 2017 May 2, 2017 - Aug 11, 2017
Undergraduate Pathway Programs			
Business, Computer and Information Science, Engineering, General Studies, Public Health, Science	⊙ ⊙	⊙ ⊙	⊙ ⊙
Graduate Pathway Programs			
Biotechnology, Business Administration (MBA), Engineering, Computer and Information Science, Design and Commercialization, Electrical Engineering, Materials Engineering, Mechanical Engineering	⊙ ⊙	⊙ ⊙	⊙ ⊙
Public Health	⊙ ⊙	⊙ ⊙	

Start Dates for Academic English

Program	Summer 2016 May 3, 2016 - Aug 5, 2016	Fall 2016 Aug 23, 2016 - Dec 9, 2016	Spring 2017 Jan 3, 2017 - Apr 21, 2017	Summer 2017 May 2, 2017 - Aug 4, 2017
Academic English	✓	✓	✓	✓

⊙ Accelerated Pathway program ⊙ Standard Pathway program ✓ Variable program length

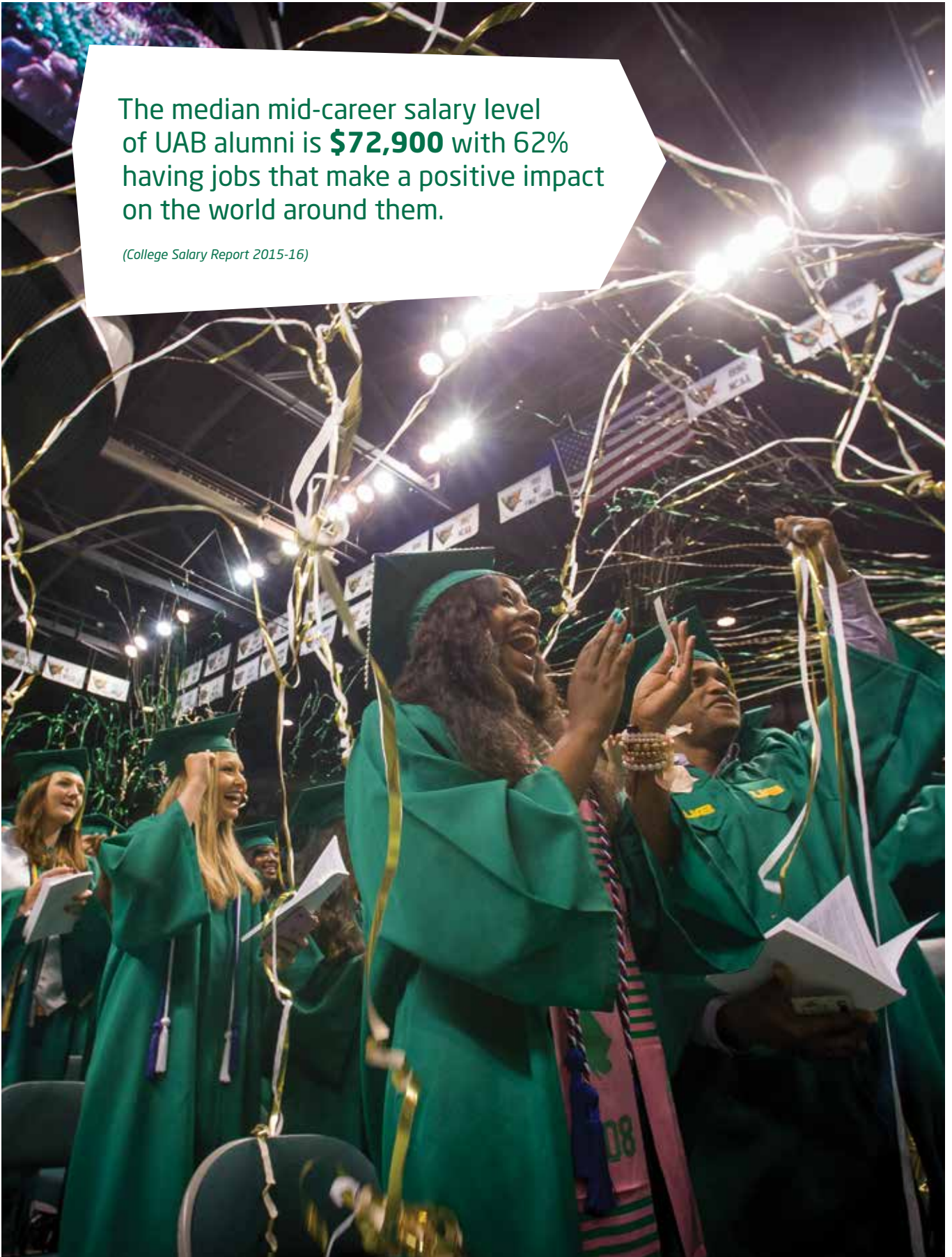
Deposits

Program	Tuition	Housing
Academic English	\$2,000	\$2,000
Pathway Program	\$2,000	\$2,000
Academic English + Pathway	\$2,000	\$2,000

Insurance for entire length of program must be paid in full at time of deposit and is required for confirmation and I-20 generation.

The median mid-career salary level of UAB alumni is **\$72,900** with 62% having jobs that make a positive impact on the world around them.

(College Salary Report 2015-16)



Want to Find Out More?

If you would like to find out more about any of our programs or services, please visit our website. You can also contact us via email or phone, or visit one of our education counselors in your home country.

Inquiries and Applications

INTO The University of Alabama at Birmingham

Smolian International House
The University of Alabama at Birmingham
1600 10th Ave South, Floor 2
Birmingham, AL 35294-1280
USA

T: +1 205 934 4686

F: +1 205 934 4685

E: INTOadmissions@uab.edu

W: intohigher.com/uab

© 2015 INTO USA, LLC. All rights reserved. INTO and the INTO roundel are registered trademarks of INTO University Partnerships Ltd.



Through innovative partnerships with leading universities, we expand opportunities for higher education, ensuring success and transforming the lives of our students and staff.

Education Counselor's Stamp