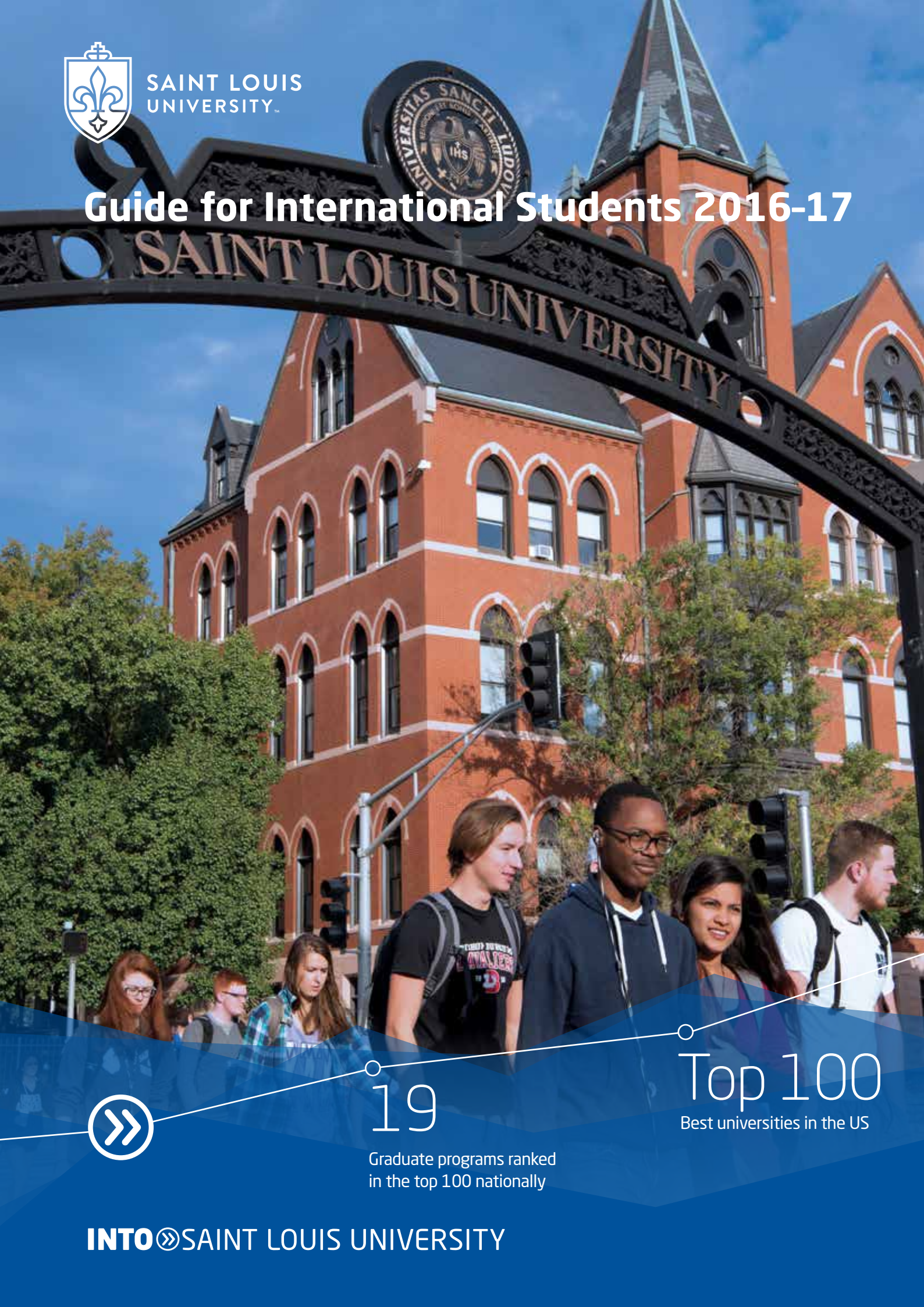




SAINT LOUIS
UNIVERSITY™

Guide for International Students 2016-17



19

Graduate programs ranked
in the top 100 nationally

Top 100

Best universities in the US

INTO  SAINT LOUIS UNIVERSITY

Saint Louis University

- 7 St. Louis, Missouri
- 9 Saint Louis University
- 10 SLU Academic Programs
- 13 SLU Colleges
- 15 INTO Saint Louis University

Undergraduate

- 18 Undergraduate Direct Entry
- 20 Undergraduate Pathway Programs

Graduate

- 30 Graduate Direct Entry
- 32 Graduate Pathway Programs
- 39 Centers of Distinction

English Language Program

- 43 Academic English

Student Life

- 47 Academic Resources
- 49 University Services
- 51 INTO SLU Student Services
- 53 Life on Campus
- 55 Sports and Recreation
- 57 Housing and Dining
- 59 Internships and Working
- 60 Alumni and Parents
- 61 Scholarships

Application

- 64 Application Process
- 65 INTO Saint Louis University Application
- 69 Affidavit of Support
- 70 Country Scales
- 72 English Waiver Guidelines
- 73 Dates, Tuition and Fees



#4

Most community service
in the US
(Washington Monthly)

Unique Learning Communities
designed to enhance holistic
educational approach



Welcome to Saint Louis University!

As a Catholic, Jesuit institution, Saint Louis University values academic excellence, life-changing research, compassionate health care and a strong commitment to faith and service. For nearly 200 years, the university has gone beyond teaching facts and figures, encouraging students to form ideas and identities. Today, SLU students are more than 13,000 strong, seeking to mold their lives into something stronger.

The university has invested vast resources to advance academic programs and enhance the student experience. SLU also is a major research institution where premier researchers tackle local and global challenges. And the university's commitment to community service has earned it national acclaim and bolstered its status as a character-building college.

In SLU's classrooms, ethics, spirituality and compassion are fundamental, no matter what the subject. More than 80 of SLU's courses integrate service into academics. And this spirit pervades campus; SLU students, faculty and staff provide more than a million hours of community service each year.

In addition, Saint Louis University is a major catalyst for urban renewal in the heart of a remarkable city. The university has funded more than \$850 million in campus improvements and expansions during the past 25 years.

Founded in 1818, SLU was the first university west of the Mississippi River. As it approaches 200 years, Saint Louis University is going boldly forward with an unwavering commitment to a higher purpose, a greater good.



“Saint Louis University is an exceptional place full of talented, dedicated people with various backgrounds, experiences and aspirations. We invite you to find out what it means to be a part of our community.”

Fred P. Pestello, PhD
President
Saint Louis University

12:1

Student-faculty ratio



Best Values in Private Education
(Kiplinger's Personal Finance 2015)



1st

Federally certified flight
school in the US



#96

in the National
University Rankings
(U.S. News & World Report 2016)

Saint Louis University



\$42,000

Average starting salary
for SLU graduates



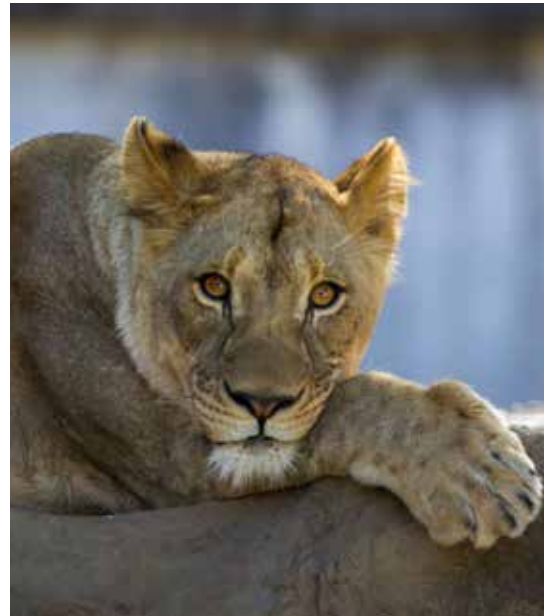
Founded in 1818 and is the
first university west of the
Mississippi River



▲ Downtown St. Louis with the 192-meter tall Gateway Arch



▲ Students enjoy the 1,293 acres of Forest Park



▲ The St. Louis Zoo is ranked as the 4th best zoo in the world

Free access to nearly all of the world-class city attractions, including the St. Louis Zoo

St. Louis, Missouri

Known as the “Gateway City,” St. Louis is rich in American history, symbolized by the giant stainless steel Gateway Arch, standing 192 meters high on the banks of the Mississippi River. Located in the heart of the city, Saint Louis University offers an urban campus, located steps from the arts and entertainment district.

Local Knowledge

Founded by the French in 1764, St. Louis is one of the largest and most historically significant cities in the Midwest. St. Louis is a hub for big business, for both Fortune 500 and privately held companies, including Boeing, Centene, Emerson, Enterprise and Monsanto.

In addition, St. Louis is emerging as one of the nation’s leading areas for high-tech entrepreneurs and information technology startups. *Forbes*, *The Wall Street Journal* and *CNBC* all praised the Gateway City’s start-up scene, adding to the growing sector.

Active Lifestyle

With more than 100 parks in the city, St. Louis is known for having an active city lifestyle. From biking and running, to walking and skateboarding, residents have no shortage of activities within the city.

Attractions

St. Louis claims a number of significant cultural gems, including the world famous Gateway Arch; Forest Park, which is larger than New York City’s Central Park and contains the city’s free zoo, art museum, science center and history museum; and City Museum, which combines art and fun through recycled architecture.

St. Louis also is noted for being one of the nation’s best sports cities. Residents and visitors cheer for the 11-time World Series champion St. Louis Cardinals of Major League Baseball, the St. Louis Blues of the National Hockey League and the St. Louis Rams of the National Football League.

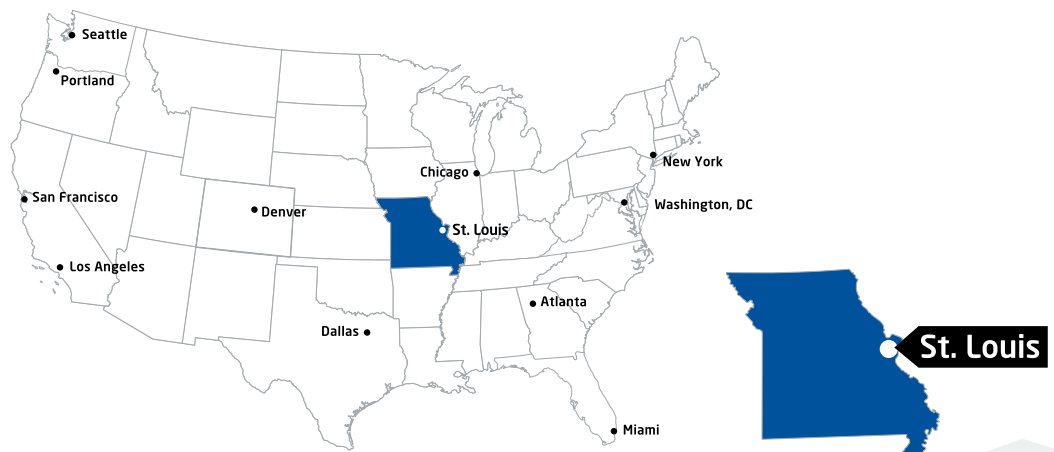
Neighborhoods

There are 79 different neighborhoods, each with its own distinctive style and characteristics.

The Midtown neighborhood is the closest to the Saint Louis University campus and features many notable art institutions and restaurants.

The Fabulous Fox Theatre is a historic venue that hosts touring musicals while Powell Symphony Hall is home to the second-oldest symphony in the US.

Chaifetz Arena, located on the SLU campus, attracts many entertainment acts and musical bands.



A short one-hour flight from Chicago, Dallas and Atlanta



Forest Park is one of the largest urban parks in the US



▼ SLU Center for Global Citizenship

SLU At-a-Glance

Founded: 1818

Enrollment: 12,914

International Students: 883

Countries Represented: 75

Bachelor's Degrees: 87

Master's/PhD Degrees: 98

Campus Size: 270 acres

Research: \$39.6M

Student-to-professor Ratio: 12:1



270-acre urban campus
in heart of the city

Saint Louis University

Saint Louis University is a Catholic, Jesuit institution that values academic excellence, life-changing research, compassionate health care, and a strong commitment to faith and service. Set on more than 270 acres in the heart of St. Louis, students benefit from a true urban campus in a historic US city. Ranked in the top 100 of US universities, SLU is steps from the arts and entertainment district known as Grand Center as well as lots of other urban, cultural attractions, providing a unique experience for its student population.

Educating through Holistic Means

Saint Louis University believes in educating “the whole person” – mind, body, heart and spirit.

Students are encouraged to challenge ideas, to look for larger, stronger answers. As a consequence, not only will you learn to defend your ideas, you will learn to improve upon them, developing the intellectual ability to think clearly, argue pointedly and express yourself clearly.

SLU students are expected to evolve as leaders, acquiring the ethical and moral foundation necessary to make sound judgments.

Challenging Students to be More

Saint Louis University values academic excellence, life-changing research, compassionate health care and a strong commitment to faith and service. For nearly 200 years, the university has gone beyond teaching facts and figures, encouraging students to form ideas and identities. Today, more than 13,000 SLU students seek to mold their lives into something stronger.

SLU is a major research institution, having invested vast resources to advance academic programs and enhance the student experience. That’s why SLU is one of only eight Catholic universities with a high or very high research designation.

Learning Outside the Classroom

At SLU, learning isn’t limited by classroom walls. The first-year experience includes innovative programs to help ensure that the student transition to SLU is successful. Part of this process is grouping new students into Learning Communities that allow for a smooth transition to SLU in a supportive, creative and academically focused environment.

Supporting Students

Students are supported by academic advisors and career counselors who assist them in making choices about majors and careers.

Additionally, the Student Success Center provides tutoring, writing assistance, supplemental instruction, academic advising, and academic and success coaching.

Culture of Values

Pursuing a shared set of values that support the common good means that excellence is sought in all that is done, personally and professionally, within the university and across all communities.

SLU creates a culture of values that promotes the highest standards of conduct for personal behavior and professional practice. These values should enable all to identify standards of conduct that promote the common good.

\$850M

in campus improvements
and expansions in the last
25 years

SLU will celebrate its 200th
anniversary in 2018

i

SLU Academic Programs

	BACHELOR'S	MASTER'S	DOCTORATE
College of Arts and Sciences			
African American Studies	⊙		
American Studies	⊙	•	•
Anthropology	⊙		
Art History	⊙		
Biochemistry	⊙		
Bioinformatics and Computational Biology		⊙	
Biology	⊙	•	•
Chemistry	⊙	•	•
Classical Humanities	⊙		
Communication	⊙	•	
Communication Sciences and Disorders	⊙	•	
Computer Science	⊙		
Economics	⊙		
English	⊙	•	•
Environmental Science	⊙		
Environmental Studies	⊙		
Forensic Science	⊙		
French	⊙	•	
Geology	⊙		
Geophysics	⊙		
Geosciences [MS concentrations: Geology, Geophysics, Environmental Geoscience] [PhD concentrations: Geophysics, Environmental Geoscience]		•	•
German Studies	⊙		
Greek and Latin Languages and Literature	⊙		
History	⊙	•	•
Integrated and Applied Sciences			•
International Relations		•	
International Studies	⊙		
Italian Studies	⊙		
Latin American Studies	⊙		
Legal Studies	•		
Mathematics	⊙	•	•
Medieval Studies	⊙		
Meteorology	⊙	•	•
Music	⊙		
Neuroscience	⊙		
Philosophy	⊙	•	•
Physics	⊙		
Political Science	⊙	•	
Psychology	⊙	•	•
Public Administration		•	
Public Policy Analysis			•
Russian Studies	⊙		
Sociology	⊙	•	
Spanish	⊙	•	
Studio Art	⊙		
Theatre	⊙		
Theological Studies	⊙	•	•
Women's and Gender Studies	⊙	•	

	BACHELOR'S	MASTER'S	DOCTORATE
Parks College of Engineering, Aviation and Technology			
Aerospace Engineering	⊙		
Aviation		•	•
Aviation Management	•		
Biomedical Engineering	⊙		
Civil Engineering	⊙		
Computer Engineering	⊙		
Electrical Engineering	⊙		
Engineering [MS concentrations: Aerospace and Mechanical Engineering, Biomedical Engineering, Civil Engineering, Electrical and Computer Engineering, Engineering Physics] [PhD concentrations: Aerospace and Mechanical Engineering, Biomedical Engineering, Civil Engineering, Electrical and Computer Engineering]		⊙	•
Engineering Physics	⊙		
Flight Science	•		
Interdisciplinary Engineering	⊙		
Mechanical Engineering	⊙		
Physics	⊙		
Doisy College of Health Sciences			
Athletic Training	⊙	•	
Cytotechnology	⊙		
Health Informatics		•	
Health Information Management	⊙		
Health Sciences	⊙	•	
Investigative and Medical Sciences	⊙		
Magnetic Resonance Imaging	⊙		
Medical Laboratory Science	⊙		
Molecular Imaging and Therapeutics		•	
Nuclear Medicine Technology	⊙		
Nutrition and Dietetics	⊙	•	
Occupational Science and Occupational Therapy	•	•	
Physical Therapy	•		•
Physician Assistant		•	
Radiation Therapy	⊙		
College for Public Health and Social Justice			
Applied Behavior Analysis		•	
Biosecurity and Disaster Preparedness		•	
Biostatistics	⊙		
Criminology and Criminal Justice	⊙		
Criminology and Professional Practice		•	
Emergency Management	⊙		
Health Administration		•	
Health Management	⊙		
Public Health	⊙	•	•
Social Work	⊙	•	

- ⦿ A Pathway program can lead to this degree and this Saint Louis University degree is available through direct entry.
 - This Saint Louis University degree program is available through direct entry.
- Undergraduate Pathway programs may lead to any bachelor's degree listed below.
 Graduate Pathway programs leading to master's degrees are listed below in blue.

	BACHELOR'S	MASTER'S	DOCTORATE
John Cook School of Business			
Accounting		●	
Applied Financial Economics		⦿	
Business Administration [BS concentrations: Accounting, Economics, Finance, Human Resource Management, Information Technology Management, International Business, Leadership and Change Management, Marketing, Sports Business]	⦿	⦿	
International Business		●	
International Business and Marketing			●
Supply Chain Management		⦿	
School of Education			
Curriculum and Instruction		●	●
Disability Education			●
Early Childhood Education	⦿		
Early Childhood Special Education	⦿		
Education (without certificate)	⦿		
Educational Foundations		●	●
Educational Leadership		●	●
Elementary Education	⦿		
Elementary Education with Special Education for Mild/Moderate Disabilities	⦿		
Higher Education Administration		●	●
Middle School Education	⦿		
Secondary Education	⦿		
Special Education		●	●
Student Personnel Administration		●	
School of Law			
Human Resource Law		●	
Law		⦿	⦿
School of Medicine			
Anatomical Sciences		●	●
Biochemistry and Molecular Biology			●
Medical Family Therapy		●	●
Medicine			●
Molecular Microbiology and Immunology			●
Pathology			●
Pharmacological and Physiological Sciences			●
School of Nursing			
Nursing	●	●	●
Albert Gnaegi Center for Health Care Ethics			
Health Care Ethics			●
Center for Advanced Dental Education			
Endodontics		●	
Orthodontics		●	
Periodontics		●	
Center for Outcomes Research			
Health Data Science		⦿	
Health Outcomes Research and Evaluation Sciences		●	
Center for Sustainability			
Sustainability		⦿	
Urban Planning and Development		⦿	



SLU Colleges

John Cook School of Business



Programs are accredited by the Association to Advance Collegiate Schools of Business

business.slu.edu

About the College

As the oldest business school west of the Mississippi River, in the heart of a large metropolitan area, the school is well connected and respected in the business community. In addition to having highly ranked business programs, students also benefit from career planning, internships and opportunities to make contacts with business professionals in each of area of study. Three important elements—Values, Leadership, Action—are woven together in an effort to create a unique and stimulating environment as the foundation for success.

Accreditation

The school gained notoriety among business educational institutions in 1948 when it achieved AACSB accreditation from the Association to Advance Collegiate Schools of Business, the premier accreditation for business programs, attesting to the quality of a business degree from Saint Louis University.

U.S. News & World Report

2016 Undergraduate Rankings

- #93 Top Overall Business Program
- #7 Entrepreneurship
- #7 International Business

2016 Graduate Rankings

- #88 Top Overall Business Program
- #15 International Business
- #17 Supply Chain Management
- #73 Part-time MBA



Parks College of Engineering



Engineering programs are accredited by the Accreditation Board of Engineering and Technology

parks.slu.edu

About the College

Founded in 1927 by Oliver "Lafe" Parks, SLU's Parks College was America's first federally certified school of aviation. Today, Parks has a worldwide reputation for its aviation and aerospace engineering degree programs. The college has also emerged as a leader in disciplines such as electrical engineering, biomedical engineering, mechanical engineering and computer engineering.

Accreditation

The Engineering programs at Parks are accredited by the Engineering Accreditation Commission, while the Flight Science program is accredited by the Aviation Accreditation Board International.

Departments

There are six departments within Parks College of Engineering, Aviation and Technology, each with their own outstanding faculty, cutting-edge research and state-of-the-art facilities.

- Aerospace & Mechanical Engineering
- Aviation Science
- Biomedical Engineering
- Civil Engineering
- Electrical & Computer Engineering
- Physics



College of Arts and Sciences

slu.edu/college-of-arts-and-sciences-home

The College of Arts and Sciences curriculum is designed so that graduates are able to make value-centered, ethically-based judgments, are academically competent in their chosen disciplines and prepared to enter a variety of careers, professional and/or graduate schools, and are inspired to be effective leaders for change.



School of Education

slu.edu/school-of-education-home

The founding philosophy of the School of Education stresses faculty collaboration in teaching and research across disciplinary lines and a commitment to serve the broader community.



Doisy College of Health Sciences

slu.edu/doisy

Doisy College of Health Sciences is located in the heart of St. Louis on SLU's Medical Center. DCHS offers health care education at the baccalaureate, master's, doctoral and professional levels.



School of Law

law.slu.edu/

Founded in 1843, Saint Louis University School of Law is the oldest law school west of the Mississippi River. The strength of faculty, breadth of course offerings and extensive clinical and professional skills experiences provide students with a well-rounded legal education.



School of Medicine

slu.edu/medicine

The medical school faculty are committed to teaching both the science and the art of medicine. Throughout the four-year medical curriculum they integrate the basic and clinical sciences through an organ system approach to medical education.



School of Nursing

slu.edu/nursing

Saint Louis University's nursing curriculum consists of science and nursing courses and a well-rounded liberal arts education background with access to SLU's state-of-the-art classrooms and clinical labs and participate in excellent clinical experiences in a wide variety of settings.



College of Philosophy and Letters

slu.edu/college-of-philosophy-and-letters-home

The college is concerned with both the undergraduate training appropriate to the bachelor's degree and the implementation of ecclesiastical requirements for seminarians at the collegiate level.



School for Professional Studies

slu.edu/school-for-professional-studies-home

Since becoming one of the first schools in the country dedicated to adult learners in 1963, the School for Professional Studies has evolved into one of the most innovative, adult-focused programs in the US.



College for Public Health and Social Justice

slu.edu/college-for-public-health-and-social-justice

As the United States' only accredited school of public health at a Catholic, Jesuit university, social justice and sustained service that benefits humanity is the moral foundation of the college's disciplines.



“INTO SLU offers students a phenomenal range of academic programs and outstanding support services. No matter what your goals are, INTO SLU is here to help you succeed.”

Tim Hercules, JD, MIB
Executive Director
INTO Saint Louis University



883

International students from
75 different countries

INTO Saint Louis University

Along with living and learning on campus, students will develop friendships with American and international students and have access to all of the academic, social and cultural resources and activities at Saint Louis University.

Welcome to INTO Saint Louis University

At INTO SLU, international students join a supportive community committed to helping students integrate with ease into American university life while preparing them for degree studies.

The INTO SLU Advantage

- Take the first steps toward earning a US degree at a top 100 university.
- Live and learn with university students from all 50 US states and 75 countries.
- Enjoy full access to all SLU resources, services and facilities.
- Learn in small classes taught by university instructors.
- Earn academic credits that apply toward SLU degree programs.
- Receive personalized academic advising throughout any program of study.
- Progress to a SLU degree program upon successful completion of a Pathway program.

Pathway Programs

The academic Pathway programs at INTO SLU combine intensive language study, academic skills development and academic course work to prepare students to progress with confidence to degree programs at Saint Louis University.

English Language Program

Students can take Academic English language courses to help meet their academic, professional and personal goals. Students have many opportunities to engage with domestic and other international students both inside and outside of the classroom.

State-of-the-art Facilities

INTO SLU provides a high-quality learning experience at Beracha Hall, conveniently located near the center of campus. Facility amenities include:

- Wireless internet throughout the center
- Multi-purpose classrooms
- Lounge areas for student-teacher meetings, study groups and relaxing
- Personalized support services 24 hours a day, including emergency assistance
- Small classes that allow for maximum student-teacher interaction
- Close proximity to all campus classrooms, residence halls, recreational facilities and restaurants/dining halls

Pathway Programs

Undergraduate Pathway Programs

- Aerospace Engineering
- Arts
- Business
- Computer Science
- Engineering
- General Studies
- Health Information Management
- Mathematics and Statistics
- Science

Graduate Pathway Programs

College of Arts and Sciences

- Bioinformatics and Computational Biology

John Cook School of Business

- Applied Financial Economics
- MBA
- Supply Chain Management

Parks College of Engineering

- Engineering

School of Law

- Law, LL.M.
- Law, J.D.

Center for Outcomes Research

- Health Data Science

Center for Sustainability

- Sustainability
- Urban Planning and Development

120K

alumni live in all 50 states
and 146 countries



More than 80 of SLU's courses integrate service into academics. This spirit is present throughout campus as SLU students, faculty and staff provide more than a million service hours each year.



99%

of tenured faculty hold the highest degree in their field

Undergraduate



25.6

Average class size

54% of undergraduate courses have fewer than 20 students



Undergraduate Direct Entry

Undergraduate education at Saint Louis University means getting a bachelor's degree, which is typically a four-year program. SLU offers a variety of bachelor's degrees, from arts and sciences to business and engineering.

1. Meet Admission Requirements

Visit Saint Louis University's website to review the admission requirements for your degree program. Ensure you meet all academic and language requirements for admission.

- Successful completion of secondary/high school degree or equivalent
- Recommended in-country equivalent of 3.0 high school GPA on a 4.0 scale
- 400-word essay on one of below topics:
 - How do you see yourself living SLU's Jesuit mission throughout your college experience and beyond?
 - Discuss an event or experience in your life that helped shape you into the person you are today.
 - What part of the SLU college experience are you most looking forward to as a student?
 - Discuss a topic of your choice.
- SAT or ACT may be required for some programs
- To meet the English language requirement, credentials proving English proficiency must be received. These items may include, but are not limited to:
 - TOEFL iBT 80 **or**
 - IELTS 6.5 **or**
 - Completion of Academic English Level 6 with no grades below C **and**
 - SLU Writing Examination 4
 - For more information on proving English proficiency, visit: slu.edu/english-proficiency-requirements
- Recommended application items:
 - Secondary school report form
 - Resume
 - Letters of recommendation
 - Admissions interview

Start Dates for Saint Louis University Degree Programs

Semester	Start Date	Rolling Application Start Date	Application Fee*
Fall 2016	August 15, 2016	November 1, 2015	\$25
Spring 2017	January 12, 2017	November 1, 2015	\$25
Summer 2017	May 24, 2017	November 1, 2015	\$25

*No undergraduate application fee when completed online.

2. Understand Admissions

The undergraduate admission process involves an initial review of your application and supporting documents to ensure that the application is complete. The completed application and supporting materials are then evaluated to determine admissibility to the program you have selected and an admission decision is made.

For detailed admissions information, visit: slu.edu/undergraduate-admission/international-admission

3. Submit Your Application

- Apply online or download the application and fill out all required fields
- The application is free if completed online, or requires a \$25 non-refundable application fee paid by check, money order or credit card for paper applications
- slu.edu/undergraduate-admission/apply-now



Academic and English Testing Score Codes for Saint Louis University

SAT: 6629	TOEFL: 6629	ACT: 2532	IELTS: DIRECT
------------------	--------------------	------------------	----------------------

4. Provide Required Documents

- Official secondary and university transcripts, diplomas and other required credentials must be mailed directly to the Saint Louis University Office of Admission from the registrar or equivalent officer at your secondary school or university in order to be considered official.
- Transcripts, diplomas and other required credentials must be submitted in the original language, accompanied by an official English translation, from the issuing institution. Transcripts must contain all secondary, college or university academic credits, grades and documentation of degrees earned.
- For applicants whose first language is not English or applicants who hold an earned secondary or bachelor's degree from a non-English institution, English language proficiency credentials must be received.
- Submit a copy of your passport with your admission application.

All official admission credentials should be sent directly to SLU's Office of Admission in a sealed and stamped envelope:

Saint Louis University

Office of Admission
DuBourg Hall, Room 150
One N. Grand Blvd.
St. Louis, Missouri 63103-2097
USA

T: +1 314 977 2500

E: international@slu.edu

5. Finalize Your Plans

If admitted, you will receive a letter of acceptance and an I-20 form. The I-20 form is used to apply for a student visa (F-1) at an American Embassy or Consulate. Saint Louis University will also send information about the next steps you will take.

Submit health forms and insurance confirmation.

Additional pre-departure and orientation information is available at: slu.edu/international-services-home/international-students/admitted-international-students

Third-party Authorization

If a family member or educational counselor is assisting with the completion of your application and you would like for SLU to communicate with them regarding your application, please contact the Saint Louis University Office of Admission at admission@slu.edu or +1 314 977 2500

Key Program Facts**Start Dates**

- Fall: August 15, 2016
- Spring: January 12, 2017
- Summer: May 24, 2017

Application Deadlines*

- Rolling Admission: November 1, 2015
- Scholarship Priority: December 1, 2015

*Applications are accepted after the deadline on space availability basis

Academic Entry Requirements

- Secondary/high school degree or equivalent
- Recommended in-country equivalent of 3.0 high school GPA on a 4.0 scale
- Essay

English Language Entry Requirements

- TOEFL iBT 80 **or**
- IELTS 6.5 **or**
- Completion of Academic English Level 6 with no grades below C **and**
- SLUWE 4

Transfer Requirements**Academic Entry Requirements:**

- Most of the university's undergraduate programs require at least a 2.5 cumulative grade point average in previous college-level coursework to be considered for admission.
- Grades of "D" and "F" and grades from institutions that do not meet the university's accreditation requirements will not transfer for credit to Saint Louis University but are included in the computation of the student's cumulative GPA.
- Transferred grades received must be at least a "C" or better. SLU reserves the right to reject the transfer of any credit for which the university has no equivalent coursework.

English Language Requirements:

- TOEFL iBT 80
- IELTS 6.5

Housing Requirements

- All students are required to live in university housing for their first four consecutive semesters (Fall/Spring)

slu.edu/admission

Undergraduate Admission Notes:

- Exceptions may be made on an individual basis. Saint Louis University reserves the right to require additional testing of any incoming student's English skills.
- TOEFL and IELTS scores are considered valid for two years.
- If it is determined that additional English studies are necessary, you may be required to take the appropriate ESL and EAP courses prior to, or concurrent with, enrolling in the university's academic programs. Graduate student requirements are determined by their program.

Undergraduate Pathway Programs

The Pathway program combines intensive language study, academic skills development and credit-bearing coursework in a customized program designed to move students successfully into their bachelor’s degree program at SLU.

Decide if the Program is Right for You

The Undergraduate Pathway program is for students who:

- Want to study an undergraduate degree in the US
- Desire additional academic, language and cultural support in order to succeed during the first year at a US university
- May need to improve English language skills

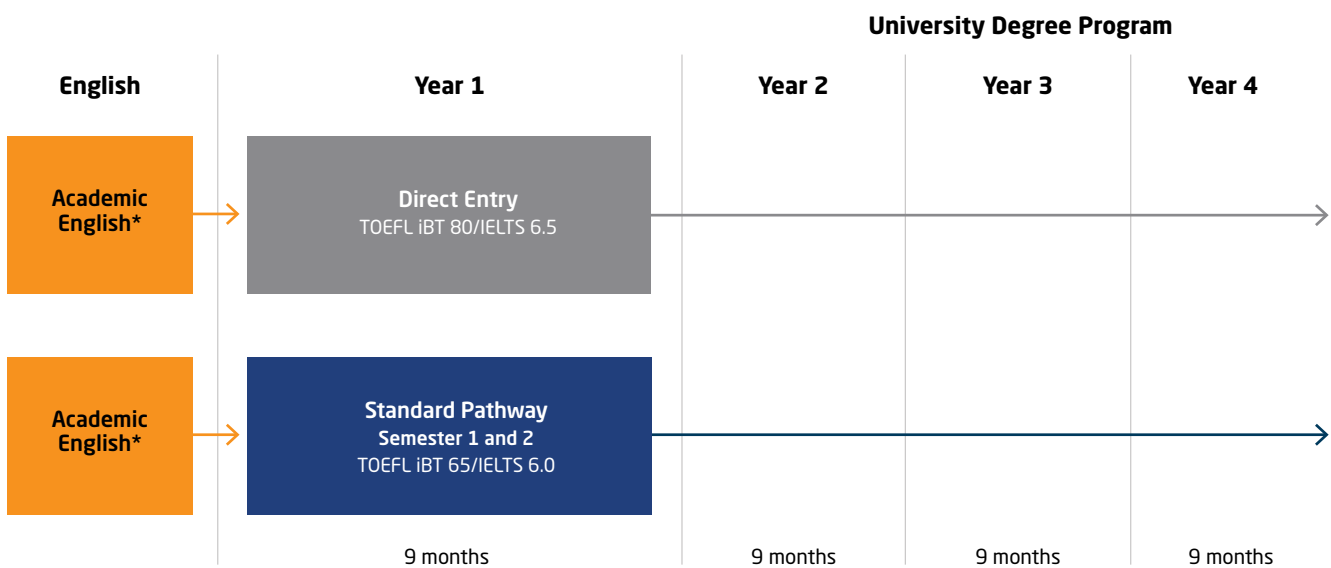
Prepare for Success

At the end of the Pathway Program, students should be able to:

- Communicate effectively in written and spoken English
- Interact fully with professors and fellow students in a US classroom setting
- Understand research, reference and citation standards for American academic papers
- Use on-campus technology, including computer hardware and software
- Read, comprehend and critically evaluate academic texts and problems
- Take useful and accurate notes in academic lectures

Program Benefits

- Guaranteed progression to a SLU undergraduate program (upon successful completion of a Pathway program)
- A curriculum of SLU credit-earning courses
- Full integration with American and international students
- Access to all SLU cultural events, athletic events and activities
- Individual supplemental tutoring for any subject
- Highly trained and experienced university instructors
- Academic advising throughout the program



*The length of your Academic English program before Pathway depends on your level of English.

English Language Placement Test

All Pathway students are required to take an English Language Placement test during orientation. The placement testing consists of an institutional TOEFL and the Saint Louis University Writing Examination (SLUWE).

Students who do not meet the minimum requirements of TOEFL PBT 510 and SLUWE 3+ will be placed into Academic English.

SLUWE Information

To prepare students for the SLUWE, the following learning module prepared by SLU's ESL instructors and SLUWE administrators is available:

www.slu.edu/international-services-home/international-students/admitted-international-students/slu-writing-exam

For regions that are unable to access YouTube, you can access this video on Youku.

A sample SLUWE can be found at:

[www.slu.edu/Documents/international_services/SLUWE\[1\].pdf](http://www.slu.edu/Documents/international_services/SLUWE[1].pdf)

Key Program Facts

Undergraduate Pathway Programs

- Aerospace Engineering
- Arts
- Business
- Computer Science
- Engineering
- General Studies
- Health Information Management
- Mathematics and Statistics
- Science

Start Dates

- Fall: August 15, 2016
- Spring: January 12, 2017

Program Duration

- Standard Pathway: 2 semesters

Academic Entry Requirement

- Secondary/high school degree or equivalent
- Recommended high school GPA 3.0 on a 4.0 scale

English Language Requirements

- TOEFL 65 **or**
- IELTS 6.0 **or**
- PTEA 46 **or**
- Completion of Academic English Level 5 **and**
- SLUWE 3+ and PBT 510

Age Requirement

16 years old and above

Housing Requirements

- All students are required to live in university housing for their first four consecutive semesters (Fall/Spring)

Pathway Program Notes

- English and Math placement will be determined by placement evaluations that are administered prior to arrival or during orientation.
- Writing skills will be assessed per the SLUWE 3+
- Math readiness will be assessed per the SLU Math Index or SLU Math Skills Evaluation.
- Pathway schedule subject to change based on availability of courses.
- Spring Pathway students will begin Semester 2 in the Fall.



Progression Routes

Progression to the following undergraduate degrees may be granted upon successful completion of an Undergraduate Pathway program.

Aerospace Engineering

Aerospace Engineering

Arts

Art History

Music

Studio Art

Theatre

Business

Business Administration

Computer Science

Computer Science

Engineering

Biomedical Engineering

Civil Engineering

Computer Engineering

Electrical Engineering

Engineering Physics

Interdisciplinary Engineering

Mechanical Engineering

Physics

General Studies

African American Studies

American Studies

Anthropology

Classical Humanities

Communication

Communication Sciences and Disorders

Criminology and Criminal Justice

Early Childhood Education

Early Childhood Special Education

Economics

Education (without certificate)

Elementary Education

Elementary Education with Special Education for Mild/Moderate Disabilities

Emergency Management

English

Environmental Studies

French

German Studies

Greek and Latin Languages and Literature

Health Management

History

International Studies

Italian Studies

Latin American Studies

Medieval Studies

Middle School Education

Philosophy

Physics

Political Science

Psychology

Public Health

Russian Studies

Secondary Education

Social Work

Sociology

Spanish

Theological Studies

Women's and Gender Studies

Health Information Management

Athletic Training

Cytotechnology

Health Information Management

Health Sciences

Investigative and Medical Sciences

Magnetic Resonance Imaging

Medical Laboratory Science

Nuclear Medicine Technology

Nutrition and Dietetics

Radiation Therapy

Mathematics and Statistics

Biostatistics

Mathematics

Science

Biochemistry

Biology

Chemistry

Environmental Science

Forensic Science

Geology

Geophysics

Meteorology

Neuroscience

Undergraduate Pathway Programs

Aerospace Engineering				
Standard Pathway - 2 Semesters	Degree Program Components		Program Information	
Fall: August 15, 2016 Spring: January 12, 2017	127 credit hour program 15 credit hours apply from Pathway 112 credit hours remaining toward degree			
Entry Requirements <ul style="list-style-type: none"> Secondary/high school degree or equivalent Recommended HS GPA 3.0 on 4.0 scale Language requirement: <ul style="list-style-type: none"> TOEFL iBT 65 or IELTS 6.0 or PTEA 46 or Completion of Academic English Level 5 and SLU Writing Examination 3+ and PBT 510 	Semester 1	Course Title	Credit Hours	
	EAP 1000	Academic Writing and Editing Skills I	3	
	EAP 1020	Academic Reading and Study Skills I	3	
	EAP 1030	Presentation and Speaking Skills	1	
	MATH 1510	Calculus I or higher	4	
	SOC 1100 or POLS 1000	Introduction to Sociology or Introduction to Politics	3	
	EAP 1010	Recitation Lab I	1	
			Total	15
	Semester 2	Course Title	Credit Hours	
	EAP 1400	Academic Writing and Editing Skills II	3	
	EAP 1220	Academic Reading and Study Skills II	3	
	MATH 1520	Calculus II or higher	4	
	AENG 1001	Intro to Aerospace Engineering	1	
	POLS 1600 or FPA 1000	Introduction to International Relations or Introduction to Arts	3	
EAP 1210	Recitation Lab II	1		
		Total	15	
Progression Requirements			<ul style="list-style-type: none"> Minimum of 2.7 cumulative SLU GPA Grade of B or better in all classes counting toward major SLUWE 4¹ No C-/D/F/W/I/P/NP/S/U grades Personal statement 	
Notes			¹ Students take the second SLU Writing Examination at the end of Semester 2 to determine progression readiness.	
			These courses are generally delivered through the INTO SLU Center and are for Pathway students only.	

Arts				
Standard Pathway - 2 Semesters	Degree Program Components		Program Information	
Fall: August 15, 2016 Spring: January 12, 2017	120 credit hour program 19 credit hours apply from Pathway 101 credit hours remaining toward degree			
Entry Requirements <ul style="list-style-type: none"> Secondary/high school degree or equivalent Recommended HS GPA 3.0 on 4.0 scale Language requirement: <ul style="list-style-type: none"> TOEFL iBT 65 or IELTS 6.0 or PTEA 46 or Completion of Academic English Level 5 and SLU Writing Examination 3+ and PBT 510 	Semester 1	Course Title	Credit Hours	
	EAP 1000	Academic Writing and Editing Skills I	3	
	EAP 1020	Academic Reading and Study Skills I	3	
	EAP 1030	Presentation and Speaking Skills	1	
	SOC 1100 or POLS 1000	Introduction to Sociology or Introduction to Politics	3	
	ART 2000	Drawing I	3	
	ART 2000	Drawing I Lab	1	
	EAP 1010	Recitation Lab I	1	
			Total	15
	Semester 2	Course Title	Credit Hours	
	EAP 1400	Academic Writing and Editing Skills II	3	
	EAP 1220	Academic Reading and Study Skills II	3	
	FPA 1000	Intro to Arts	3	
	MATH 1220	Finite Math or equivalent	3	
EAP 1210	Recitation Lab II	1		
		Total	13	
Progression Requirements			<ul style="list-style-type: none"> Minimum of 2.7 cumulative SLU GPA (GPA may vary depending on major) Grade of B or better in all classes counting toward major SLUWE 4¹ No C-/D/F/W/I/P/NP/S/U grades Personal statement Portfolio review required if applying to be a Major in Studio Art Musical audition required if applying to be a Major in Music 	
Notes			¹ Students take the second SLU Writing Examination at the end of Semester 2 to determine progression readiness.	
			These courses are generally delivered through the INTO SLU Center and are for Pathway students only.	

Undergraduate Pathway Programs

Business																				
Standard Pathway - 2 Semesters	Degree Program Components		Program Information																	
Fall: August 15, 2016 Spring: January 12, 2017	120 credit hour program 23 credit hours apply from Pathway 97 credit hours remaining toward degree																			
Entry Requirements <ul style="list-style-type: none"> Secondary/high school degree or equivalent Recommended HS GPA 3.0 on 4.0 scale Language requirement: <ul style="list-style-type: none"> TOEFL iBT 65 or IELTS 6.0 or PTEA 46 or Completion of Academic English Level 5 and SLU Writing Examination 3+ and PBT 510 	Semester 1 <table border="1"> <thead> <tr> <th>Course Title</th> <th>Credit Hours</th> </tr> </thead> <tbody> <tr> <td>EAP 1000 Academic Writing and Editing Skills I</td> <td>3</td> </tr> <tr> <td>EAP 1020 Academic Reading and Study Skills I</td> <td>3</td> </tr> <tr> <td>EAP 1030 Presentation and Speaking Skills</td> <td>1</td> </tr> <tr> <td>MATH 1200 or MATH 1320 College Algebra or Survey of Calculus</td> <td>3</td> </tr> <tr> <td>SOC 1100 or POLS 1000 Introduction to Sociology or Introduction to Politics</td> <td>3</td> </tr> <tr> <td>EAP 1010 Recitation Lab I</td> <td>1</td> </tr> <tr> <td>Total</td> <td>14</td> </tr> </tbody> </table>	Course Title	Credit Hours	EAP 1000 Academic Writing and Editing Skills I	3	EAP 1020 Academic Reading and Study Skills I	3	EAP 1030 Presentation and Speaking Skills	1	MATH 1200 or MATH 1320 College Algebra or Survey of Calculus	3	SOC 1100 or POLS 1000 Introduction to Sociology or Introduction to Politics	3	EAP 1010 Recitation Lab I	1	Total	14	Progression Requirements <ul style="list-style-type: none"> Minimum of 2.7 cumulative SLU GPA Grade of B or better in all classes counting toward major SLUWE 4¹ No C-/D/F/W/I/P/NP/S/U grades Personal statement Notes ¹ Students take the second SLU Writing Examination at the end of Semester 2 to determine progression readiness. These courses are generally delivered through the INTO SLU Center and are for Pathway students only.		
	Course Title	Credit Hours																		
	EAP 1000 Academic Writing and Editing Skills I	3																		
	EAP 1020 Academic Reading and Study Skills I	3																		
	EAP 1030 Presentation and Speaking Skills	1																		
	MATH 1200 or MATH 1320 College Algebra or Survey of Calculus	3																		
	SOC 1100 or POLS 1000 Introduction to Sociology or Introduction to Politics	3																		
	EAP 1010 Recitation Lab I	1																		
	Total	14																		
	Semester 2 <table border="1"> <thead> <tr> <th>Course Title</th> <th>Credit Hours</th> </tr> </thead> <tbody> <tr> <td>EAP 1400 Academic Writing and Editing Skills II</td> <td>3</td> </tr> <tr> <td>EAP 1220 Academic Reading and Study Skills II</td> <td>3</td> </tr> <tr> <td>MATH 1320 or MATH 1510 Survey of Calculus or Calculus I</td> <td>3</td> </tr> <tr> <td>POLS 1600 or FPA 1000 Introduction to International Relations or Introduction to Arts</td> <td>3</td> </tr> <tr> <td>EAP 1210 Recitation Lab II</td> <td>1</td> </tr> <tr> <td>BIZ 1000 Business Foundations (includes Excel lab)</td> <td>1</td> </tr> <tr> <td>EAP 1215 Recitation Lab III</td> <td>1</td> </tr> <tr> <td>Total</td> <td>15</td> </tr> </tbody> </table>	Course Title	Credit Hours	EAP 1400 Academic Writing and Editing Skills II	3	EAP 1220 Academic Reading and Study Skills II	3	MATH 1320 or MATH 1510 Survey of Calculus or Calculus I	3	POLS 1600 or FPA 1000 Introduction to International Relations or Introduction to Arts	3	EAP 1210 Recitation Lab II	1	BIZ 1000 Business Foundations (includes Excel lab)	1	EAP 1215 Recitation Lab III	1		Total	15
	Course Title	Credit Hours																		
	EAP 1400 Academic Writing and Editing Skills II	3																		
	EAP 1220 Academic Reading and Study Skills II	3																		
	MATH 1320 or MATH 1510 Survey of Calculus or Calculus I	3																		
	POLS 1600 or FPA 1000 Introduction to International Relations or Introduction to Arts	3																		
EAP 1210 Recitation Lab II	1																			
BIZ 1000 Business Foundations (includes Excel lab)	1																			
EAP 1215 Recitation Lab III	1																			
Total	15																			

Computer Science																		
Standard Pathway - 2 Semesters	Degree Program Components		Program Information															
Fall: August 15, 2016 Spring: January 12, 2017	120 credit hour program 23 credit hours apply from Pathway 97 credit hours remaining toward degree																	
Entry Requirements <ul style="list-style-type: none"> Secondary/high school degree or equivalent Recommended HS GPA 3.0 on 4.0 scale Language requirement: <ul style="list-style-type: none"> TOEFL iBT 65 or IELTS 6.0 or PTEA 46 or Completion of Academic English Level 5 and SLU Writing Examination 3+ and PBT 510 	Semester 1 <table border="1"> <thead> <tr> <th>Course Title</th> <th>Credit Hours</th> </tr> </thead> <tbody> <tr> <td>EAP 1000 Academic Writing and Editing Skills I</td> <td>3</td> </tr> <tr> <td>EAP 1020 Academic Reading and Study Skills I</td> <td>3</td> </tr> <tr> <td>EAP 1030 Presentation and Speaking Skills</td> <td>1</td> </tr> <tr> <td>MATH 1510 Calculus I or higher</td> <td>4</td> </tr> <tr> <td>SOC 1100 or POLS 1000 Introduction to Sociology or Introduction to Politics</td> <td>3</td> </tr> <tr> <td>EAP 1010 Recitation Lab I</td> <td>1</td> </tr> <tr> <td>Total</td> <td>15</td> </tr> </tbody> </table>	Course Title	Credit Hours	EAP 1000 Academic Writing and Editing Skills I	3	EAP 1020 Academic Reading and Study Skills I	3	EAP 1030 Presentation and Speaking Skills	1	MATH 1510 Calculus I or higher	4	SOC 1100 or POLS 1000 Introduction to Sociology or Introduction to Politics	3	EAP 1010 Recitation Lab I	1	Total	15	Progression Requirements <ul style="list-style-type: none"> Minimum of 2.7 cumulative SLU GPA Grade of B or better in all classes counting toward major SLUWE 4¹ No C-/D/F/W/I/P/NP/S/U grades Personal statement Notes ¹ Students take the second SLU Writing Examination at the end of Semester 2 to determine progression readiness. These courses are generally delivered through the INTO SLU Center and are for Pathway students only.
	Course Title	Credit Hours																
	EAP 1000 Academic Writing and Editing Skills I	3																
	EAP 1020 Academic Reading and Study Skills I	3																
	EAP 1030 Presentation and Speaking Skills	1																
	MATH 1510 Calculus I or higher	4																
	SOC 1100 or POLS 1000 Introduction to Sociology or Introduction to Politics	3																
	EAP 1010 Recitation Lab I	1																
	Total	15																
	Semester 2 <table border="1"> <thead> <tr> <th>Course Title</th> <th>Credit Hours</th> </tr> </thead> <tbody> <tr> <td>EAP 1400 Academic Writing and Editing Skills II</td> <td>3</td> </tr> <tr> <td>EAP 1220 Academic Reading and Study Skills II</td> <td>3</td> </tr> <tr> <td>MATH 1520 Calculus II or higher</td> <td>4</td> </tr> <tr> <td>CSCI 1000-1099 Introduction to Computer Science</td> <td>3</td> </tr> <tr> <td>POLS 1600 or FPA 1000 Introduction to International Relations or Introduction to Arts</td> <td>3</td> </tr> <tr> <td>EAP 1210 Recitation Lab II</td> <td>1</td> </tr> <tr> <td>Total</td> <td>17</td> </tr> </tbody> </table>	Course Title	Credit Hours	EAP 1400 Academic Writing and Editing Skills II	3	EAP 1220 Academic Reading and Study Skills II	3	MATH 1520 Calculus II or higher	4	CSCI 1000-1099 Introduction to Computer Science	3	POLS 1600 or FPA 1000 Introduction to International Relations or Introduction to Arts	3	EAP 1210 Recitation Lab II	1	Total	17	
	Course Title	Credit Hours																
	EAP 1400 Academic Writing and Editing Skills II	3																
	EAP 1220 Academic Reading and Study Skills II	3																
	MATH 1520 Calculus II or higher	4																
	CSCI 1000-1099 Introduction to Computer Science	3																
POLS 1600 or FPA 1000 Introduction to International Relations or Introduction to Arts	3																	
EAP 1210 Recitation Lab II	1																	
Total	17																	

Engineering																			
Standard Pathway - 2 Semesters	Degree Program Components		Program Information																
Fall: August 15, 2016 Spring: January 12, 2017	124-128 credit hour program 15 credit hours apply from Pathway 109-113 credit hours remaining toward degree																		
Entry Requirements <ul style="list-style-type: none"> Secondary/high school degree or equivalent Recommended HS GPA 3.0 on 4.0 scale Language requirement: <ul style="list-style-type: none"> TOEFL iBT 65 or IELTS 6.0 or PTEA 46 or Completion of Academic English Level 5 and SLU Writing Examination 3+ and PBT 510 	Semester 1	<table border="1"> <thead> <tr> <th>Course Title</th> <th>Credit Hours</th> </tr> </thead> <tbody> <tr> <td>EAP 1000 Academic Writing and Editing Skills I</td> <td>3</td> </tr> <tr> <td>EAP 1020 Academic Reading and Study Skills I</td> <td>3</td> </tr> <tr> <td>EAP 1030 Presentation and Speaking Skills</td> <td>1</td> </tr> <tr> <td>MATH 1510 Calculus I or higher</td> <td>4</td> </tr> <tr> <td>SOC 1100 or POLS 1000 Introduction to Sociology or Introduction to Politics</td> <td>3</td> </tr> <tr> <td>EAP 1010 Recitation Lab I</td> <td>1</td> </tr> <tr> <td style="text-align: right;">Total</td> <td>15</td> </tr> </tbody> </table>	Course Title	Credit Hours	EAP 1000 Academic Writing and Editing Skills I	3	EAP 1020 Academic Reading and Study Skills I	3	EAP 1030 Presentation and Speaking Skills	1	MATH 1510 Calculus I or higher	4	SOC 1100 or POLS 1000 Introduction to Sociology or Introduction to Politics	3	EAP 1010 Recitation Lab I	1	Total	15	Progression Requirements <ul style="list-style-type: none"> Minimum of 2.7 cumulative SLU GPA Grade of B or better in all classes counting toward major SLUWE 4¹ No C-/D/F/W//P/NP/S/U grades Personal statement Notes <p>¹ Students take the second SLU Writing Examination at the end of Semester 2 to determine progression readiness.</p> <p>² Students who have an interest in biomedical engineering, civil engineering, electrical and computer engineering, and mechanical engineering would substitute the 1000 level introductory course for those major interests.</p> <p>These courses are generally delivered through the INTO SLU Center and are for Pathway students only.</p>
	Course Title	Credit Hours																	
	EAP 1000 Academic Writing and Editing Skills I	3																	
	EAP 1020 Academic Reading and Study Skills I	3																	
	EAP 1030 Presentation and Speaking Skills	1																	
	MATH 1510 Calculus I or higher	4																	
	SOC 1100 or POLS 1000 Introduction to Sociology or Introduction to Politics	3																	
	EAP 1010 Recitation Lab I	1																	
	Total	15																	
	Semester 2	<table border="1"> <thead> <tr> <th>Course Title</th> <th>Credit Hours</th> </tr> </thead> <tbody> <tr> <td>EAP 1400 Academic Writing and Editing Skills II</td> <td>3</td> </tr> <tr> <td>EAP 1220 Academic Reading and Study Skills II</td> <td>3</td> </tr> <tr> <td>MATH 1520 Calculus II or higher</td> <td>4</td> </tr> <tr> <td>Discipline Specific Introductory Course</td> <td>1²</td> </tr> <tr> <td>POLS 1600 or FPA 1000 Introduction to International Relations or Introduction to Arts</td> <td>3</td> </tr> <tr> <td>EAP 1210 Recitation Lab II</td> <td>1</td> </tr> <tr> <td style="text-align: right;">Total</td> <td>15</td> </tr> </tbody> </table>	Course Title	Credit Hours	EAP 1400 Academic Writing and Editing Skills II	3	EAP 1220 Academic Reading and Study Skills II	3	MATH 1520 Calculus II or higher	4	Discipline Specific Introductory Course	1 ²	POLS 1600 or FPA 1000 Introduction to International Relations or Introduction to Arts	3	EAP 1210 Recitation Lab II	1	Total	15	
	Course Title	Credit Hours																	
	EAP 1400 Academic Writing and Editing Skills II	3																	
	EAP 1220 Academic Reading and Study Skills II	3																	
	MATH 1520 Calculus II or higher	4																	
Discipline Specific Introductory Course	1 ²																		
POLS 1600 or FPA 1000 Introduction to International Relations or Introduction to Arts	3																		
EAP 1210 Recitation Lab II	1																		
Total	15																		

General Studies																			
Standard Pathway - 2 Semesters	Degree Program Components		Program Information																
Fall: August 15, 2016 Spring: January 12, 2017	120 credit hour program 18 credit hours apply from Pathway 102 credit hours remaining toward degree																		
Entry Requirements <ul style="list-style-type: none"> Secondary/high school degree or equivalent Recommended HS GPA 3.0 on 4.0 scale Language requirement: <ul style="list-style-type: none"> TOEFL iBT 65 or IELTS 6.0 or PTEA 46 or Completion of Academic English Level 5 and SLU Writing Examination 3+ and PBT 510 	Semester 1	<table border="1"> <thead> <tr> <th>Course Title</th> <th>Credit Hours</th> </tr> </thead> <tbody> <tr> <td>EAP 1000 Academic Writing and Editing Skills I</td> <td>3</td> </tr> <tr> <td>EAP 1020 Academic Reading and Study Skills I</td> <td>3</td> </tr> <tr> <td>EAP 1030 Presentation and Speaking Skills</td> <td>1</td> </tr> <tr> <td>MATH 1200 College Algebra or equivalent</td> <td>3</td> </tr> <tr> <td>SOC 1100 or POLS 1000 Introduction to Sociology or Introduction to Politics</td> <td>3</td> </tr> <tr> <td>EAP 1010 Recitation Lab I</td> <td>1</td> </tr> <tr> <td style="text-align: right;">Total</td> <td>14</td> </tr> </tbody> </table>	Course Title	Credit Hours	EAP 1000 Academic Writing and Editing Skills I	3	EAP 1020 Academic Reading and Study Skills I	3	EAP 1030 Presentation and Speaking Skills	1	MATH 1200 College Algebra or equivalent	3	SOC 1100 or POLS 1000 Introduction to Sociology or Introduction to Politics	3	EAP 1010 Recitation Lab I	1	Total	14	Progression Requirements <ul style="list-style-type: none"> Minimum of 2.7 cumulative SLU GPA (GPA may vary depending on major) Grade of B or better in all classes counting toward major SLUWE 4¹ No C-/D/F/W//P/NP/S/U grades Personal statement Notes <p>¹ Students take the second SLU Writing Examination at the end of Semester 2 to determine progression readiness.</p> <p>These courses are generally delivered through the INTO SLU Center and are for Pathway students only.</p>
	Course Title	Credit Hours																	
	EAP 1000 Academic Writing and Editing Skills I	3																	
	EAP 1020 Academic Reading and Study Skills I	3																	
	EAP 1030 Presentation and Speaking Skills	1																	
	MATH 1200 College Algebra or equivalent	3																	
	SOC 1100 or POLS 1000 Introduction to Sociology or Introduction to Politics	3																	
	EAP 1010 Recitation Lab I	1																	
	Total	14																	
	Semester 2	<table border="1"> <thead> <tr> <th>Course Title</th> <th>Credit Hours</th> </tr> </thead> <tbody> <tr> <td>EAP 1400 Academic Writing and Editing Skills II</td> <td>3</td> </tr> <tr> <td>EAP 1220 Academic Reading and Study Skills II</td> <td>3</td> </tr> <tr> <td>MATH 1320 Survey of Calculus or higher</td> <td>3</td> </tr> <tr> <td>POLS 1600 or FPA 1000 Introduction to International Relations or Introduction to Arts</td> <td>3</td> </tr> <tr> <td>EAP 1210 Recitation Lab II</td> <td>1</td> </tr> <tr> <td style="text-align: right;">Total</td> <td>13</td> </tr> </tbody> </table>	Course Title	Credit Hours	EAP 1400 Academic Writing and Editing Skills II	3	EAP 1220 Academic Reading and Study Skills II	3	MATH 1320 Survey of Calculus or higher	3	POLS 1600 or FPA 1000 Introduction to International Relations or Introduction to Arts	3	EAP 1210 Recitation Lab II	1	Total	13			
	Course Title	Credit Hours																	
	EAP 1400 Academic Writing and Editing Skills II	3																	
	EAP 1220 Academic Reading and Study Skills II	3																	
	MATH 1320 Survey of Calculus or higher	3																	
POLS 1600 or FPA 1000 Introduction to International Relations or Introduction to Arts	3																		
EAP 1210 Recitation Lab II	1																		
Total	13																		

Undergraduate Pathway Programs

Health Information Management

Standard Pathway - 2 Semesters

Fall: August 15, 2016
Spring: January 12, 2017

Degree Program Components

120 credit hour program
30 credit hours apply from Pathway
93 credit hours remaining toward degree

Program Information

Entry Requirements

- Secondary/high school degree or equivalent
- Recommended HS GPA 3.0 on 4.0 scale
- Language requirement:
 - TOEFL iBT 65 **or**
 - IELTS 6.0 **or**
 - PTEA 46 **or**
- Completion of Academic English Level 5 **and**
- SLU Writing Examination 3+ and PBT 510

Semester 1	Course Title	Credit Hours
EAP 1000	Academic Writing and Editing Skills I	3
EAP 1020	Academic Reading and Study Skills I	3
EAP 1030	Presentation and Speaking Skills	1
MATH 1200	College Algebra	3
SOC 1100 or POLS 1000	Introduction to Sociology or Introduction to Politics	3
EAP 1010	Recitation Lab I	1
Total		14
Semester 2	Course Title	Credit Hours
EAP 1400	Academic Writing and Editing Skills II	3
EAP 1220	Academic Reading and Study Skills II	3
POLS 1600	Introduction to International Relations	3
FPA 1000	Introduction to Arts	3
EAP 1210	Recitation Lab II	1
	Elective	3
Total		16

Progression Requirements

- Minimum of 2.5 cumulative SLU GPA
- Grade of B or better in all classes counting toward major
- SLUWE 4¹
- No C-/D/F/W/I/P/NP/S/U grades
- Personal statement

Notes

¹ Students take the second SLU Writing Examination at the end of Semester 2 to determine progression readiness.

These courses are generally delivered through the INTO SLU Center and are for Pathway students only.

Mathematics and Statistics

Standard Pathway - 2 Semesters

Fall: August 15, 2016
Spring: January 12, 2017

Degree Program Components

120 credit hour program
20 credit hours apply from Pathway
100 credit hours remaining toward degree

Program Information

Entry Requirements

- Secondary/high school degree or equivalent
- Recommended HS GPA 3.0 on 4.0 scale
- Language requirement:
 - TOEFL iBT 65 **or**
 - IELTS 6.0 **or**
 - PTEA 46 **or**
- Completion of Academic English Level 5 **and**
- SLU Writing Examination 3+ and PBT 510

Semester 1	Course Title	Credit Hours
EAP 1000	Academic Writing and Editing Skills I	3
EAP 1020	Academic Reading and Study Skills I	3
EAP 1030	Presentation and Speaking Skills	1
MATH 1510	Calculus I or higher	4
SOC 1100 or POLS 1000	Introduction to Sociology or Introduction to Politics	3
EAP 1010	Recitation Lab I	1
Total		15
Semester 2	Course Title	Credit Hours
EAP 1400	Academic Writing and Editing Skills II	3
EAP 1220	Academic Reading and Study Skills II	3
MATH 1520	Calculus II or higher	4
POLS 1600 or FPA 1000	Introduction to International Relations or Introduction to Arts	3
EAP 1210	Recitation Lab II	1
Total		14

Progression Requirements

- Minimum of 2.5 cumulative SLU GPA
- Grade of B or better in all classes counting toward major
- SLUWE 4¹
- No C-/D/F/W/I/P/NP/S/U grades
- Personal statement

Notes

¹ Students take the second SLU Writing Examination at the end of Semester 2 to determine progression readiness.

These courses are generally delivered through the INTO SLU Center and are for Pathway students only.

Science																																															
Standard Pathway - 2 Semesters	Degree Program Components	Program Information																																													
Fall: August 15, 2016 Spring: January 12, 2017	120 credit hour program 18 credit hours apply from Pathway 102 credit hours remaining toward degree																																														
Entry Requirements <ul style="list-style-type: none"> Secondary/high school degree or equivalent Recommended HS GPA 3.0 on 4.0 scale Language requirement: <ul style="list-style-type: none"> TOEFL iBT 65 or IELTS 6.0 or PTEA 46 or Completion of Academic English Level 5 and SLU Writing Examination 3+ and PBT 510 	<table border="1"> <thead> <tr> <th>Semester 1</th> <th>Course Title</th> <th>Credit Hours</th> </tr> </thead> <tbody> <tr> <td>EAP 1000</td> <td>Academic Writing and Editing Skills I</td> <td>3</td> </tr> <tr> <td>EAP 1020</td> <td>Academic Reading and Study Skills I</td> <td>3</td> </tr> <tr> <td>EAP 1030</td> <td>Presentation and Speaking Skills</td> <td>1</td> </tr> <tr> <td>MATH 1400</td> <td>Pre-Calculus or higher</td> <td>3</td> </tr> <tr> <td>SOC 1100 or POLS 1000</td> <td>Introduction to Sociology or Introduction to Politics</td> <td>3</td> </tr> <tr> <td>EAP 1010</td> <td>Recitation Lab I</td> <td>1</td> </tr> <tr> <td colspan="2"></td> <td>Total 14</td> </tr> <tr> <th>Semester 2</th> <th>Course Title</th> <th>Credit Hours</th> </tr> <tr> <td>EAP 1400</td> <td>Academic Writing and Editing Skills II</td> <td>3</td> </tr> <tr> <td>EAP 1220</td> <td>Academic Reading and Study Skills II</td> <td>3</td> </tr> <tr> <td>CHEM 1050</td> <td>Basic Chemistry</td> <td>3</td> </tr> <tr> <td>POLS 1600 or FPA 1000</td> <td>Introduction to International Relations or Introduction to Arts</td> <td>3</td> </tr> <tr> <td>EAP 1210</td> <td>Recitation Lab II</td> <td>1</td> </tr> <tr> <td colspan="2"></td> <td>Total 13</td> </tr> </tbody> </table>	Semester 1	Course Title	Credit Hours	EAP 1000	Academic Writing and Editing Skills I	3	EAP 1020	Academic Reading and Study Skills I	3	EAP 1030	Presentation and Speaking Skills	1	MATH 1400	Pre-Calculus or higher	3	SOC 1100 or POLS 1000	Introduction to Sociology or Introduction to Politics	3	EAP 1010	Recitation Lab I	1			Total 14	Semester 2	Course Title	Credit Hours	EAP 1400	Academic Writing and Editing Skills II	3	EAP 1220	Academic Reading and Study Skills II	3	CHEM 1050	Basic Chemistry	3	POLS 1600 or FPA 1000	Introduction to International Relations or Introduction to Arts	3	EAP 1210	Recitation Lab II	1			Total 13	Progression Requirements <ul style="list-style-type: none"> Minimum of 2.5 cumulative SLU GPA (GPA may vary depending on major) Grade of B or better in all classes counting toward major SLUWE 4¹ No C-/D/F/W/VP/NP/S/U grades Personal statement <p>Notes</p> <p>¹ Students take the second SLU Writing Examination at the end of Semester 2 to determine progression readiness.</p> <p>These courses are generally delivered through the INTO SLU Center and are for Pathway students only.</p>
Semester 1	Course Title	Credit Hours																																													
EAP 1000	Academic Writing and Editing Skills I	3																																													
EAP 1020	Academic Reading and Study Skills I	3																																													
EAP 1030	Presentation and Speaking Skills	1																																													
MATH 1400	Pre-Calculus or higher	3																																													
SOC 1100 or POLS 1000	Introduction to Sociology or Introduction to Politics	3																																													
EAP 1010	Recitation Lab I	1																																													
		Total 14																																													
Semester 2	Course Title	Credit Hours																																													
EAP 1400	Academic Writing and Editing Skills II	3																																													
EAP 1220	Academic Reading and Study Skills II	3																																													
CHEM 1050	Basic Chemistry	3																																													
POLS 1600 or FPA 1000	Introduction to International Relations or Introduction to Arts	3																																													
EAP 1210	Recitation Lab II	1																																													
		Total 13																																													



“I came to Saint Louis University because Jesuit schools are known for their fantastic education. When I came to look at Jesuit Universities I was really impressed with Saint Louis University’s business school, the nice campus, and the dedication of the students.”

Jon Aranguren, Spain



22 graduate and professional programs in the top 100 in their fields



#7

Health Care Management Program
(U.S. News & World Report 2016)

Graduate



LOUIS UNIVERSITY

At Saint Louis University, there are nearly 80 graduate and professional degree programs of study -- many of them nationally ranked, providing students access to a variety of careers and lives.



#1

Health Care Law Program
(U.S. News & World Report 2016)



First graduate schools west of the Mississippi River

Graduate Direct Entry

SLU is home to a vibrant community of scholars. The university's more than 80 post-baccalaureate degree programs support an atmosphere of inquiry that leads to groundbreaking scientific discoveries and life-changing professional accomplishments.

1. Meet Admission Requirements

Visit Saint Louis University's website to review the admission requirements for your degree program. Ensure you meet all academic and language requirements for admission.

- A bachelor's degree or equivalent
- 3.0 or higher GPA on a US 4.0 scale
- To meet the English language requirement, credentials proving English proficiency must be received. These items may include, but are not limited to:
 - TOEFL iBT 80+ **or**
 - IELTS 6.5 **or**
 - PTEA 54 **or**
 - Completion of Academic English Level 6 with no grades below B **and**
 - SLU Writing Examination 4+
- For more information on proving English proficiency, visit: slu.edu/graduate-admission-home/international-students/english-proficiency-policy

Start Dates for Saint Louis University Degree Programs

Semester	Start Date	Rolling Application Start Date	Application Fee*
Fall 2016	August 15, 2016	November 1, 2015	\$55-100
Spring 2017	January 12, 2017	November 1, 2015	\$55-100

*Graduate application fees vary by program.

2. Understand Admissions

The graduate admission process involves an initial review by Graduate Admission to ensure that your application is complete and minimum institutional requirements are met. The completed application and supporting materials are then sent to the degree program you select for an admission decision.

For detailed admissions information, visit: slu.edu/graduate-admission-home/international-students

3. Submit Your Application

- Apply online or download the application and fill out all required fields
- The application requires a \$55-100 non-refundable application fee paid, depending on the program, by check, money order or credit card

For more information, visit: slu.edu/graduate-admission-home/apply-now



Academic and English Testing Score Codes for Saint Louis University

GRE: 6629	TOEFL: 6629	GMAT: VARIOUS	IELTS: 6629
------------------	--------------------	----------------------	--------------------

4. Provide Required Documents

- Official university transcripts and other credentials required by the program must be mailed directly to the Saint Louis University Office of Admission from the registrar or equivalent officer at your university.
- Transcripts and other required credentials must be submitted in the original language, accompanied by an official English translation, from the issuing institution. Transcripts must contain all college or university academic credits, grades and documentation of degrees earned.
- For applicants whose first language is not English, or applicants who hold an earned bachelor's degree from a non-English institution, English language proficiency credentials must be received.
- GRE or other graduate examination test scores if required by degree program.
- Submit a copy of your passport with your admission application.

All official admission credentials should be sent directly to the Saint Louis University Office of Admission in a sealed and stamped envelope:

Saint Louis University

Office of Graduate Admission
DuBourg Hall, Room 150
One N. Grand Blvd.
St. Louis, Missouri 63103-2097
USA

T: +1 314 977 2500

E: international@slu.edu

5. Finalize Your Plans

If admitted, you will receive a letter of acceptance and an I-20 form. The I-20 form is used to apply for a student visa (F-1) at an American Embassy or Consulate. Saint Louis University will also send information about the next steps you will take.

Additional pre-departure and orientation information is available at:

slu.edu/graduate-admission-home/admitted-students

Third-party Authorization

If a family member or educational counselor is assisting with the completion of your application and you would like for SLU to communicate with them regarding your application, please contact the Saint Louis University Office of Admission at gradadmission@slu.edu or +1 314 977 2500

Key Program Facts**Start Dates**

- Fall: August 15, 2016
- Spring: January 12, 2017

Rolling Application Start Date*

- Rolling Admission: November 1, 2015
- Scholarship Priority: December 1, 2015

*Applications are accepted after the deadline on space availability basis

Academic Entry Requirements

- A bachelor's degree or equivalent with a minimum 3.0 GPA on a 4.0 scale
- Minimum GRE or GMAT scores, if required by desired degree program
- The degree program you select may have additional requirements with which you must comply

Note: Meeting the minimum admission requirements does not guarantee admission to Saint Louis University or any specific program. Admission decisions may be based on such factors as the suitability of the applicant's research interests, the availability of professors in a particular field of research and the number of qualified applicants.

English Language Entry Requirements*

- TOEFL iBT 80+ **or**
- IELTS 6.5 **or**
- PTEA 54 **and**
- Completion of Academic English Level 6 with no grades below B **and**
- SLU Writing Examination 4+

*Certain programs have higher minimum requirements

slu.edu/graduate

Top 100 SLU Graduate Programs

- | | |
|----------------------------|-------------------------------|
| #1 Health Care Law | #52 Social Work |
| #7 Health Care Management | #57 Primary Care Medicine |
| #15 International Business | #67 Medical Research |
| #17 Supply Chain Logistics | #73 Part-time MBA |
| #23 Public Health | #73 Speech-Language Pathology |
| #27 Physician Assistant | #79 Clinical Psychology |
| #31 Part-time Law | #84 History |
| #34 Physical Therapy | #88 Earth Sciences |
| #36 Occupational Therapy | #98 English |
| #51 Nursing | |

As ranked by U.S. News & World Report 2016.

Graduate Pathway Programs

A master’s degree usually takes two years of full-time study. The two main types of master’s degree programs are professional master’s degrees and research master’s degrees, both of which are offered at Saint Louis University.

Understand the Pathway Program

The Graduate Pathway programs offered at INTO SLU are designed to develop international students’ academic knowledge and strengthen their language ability and study skills, enabling them to progress successfully to a Saint Louis University graduate degree program.

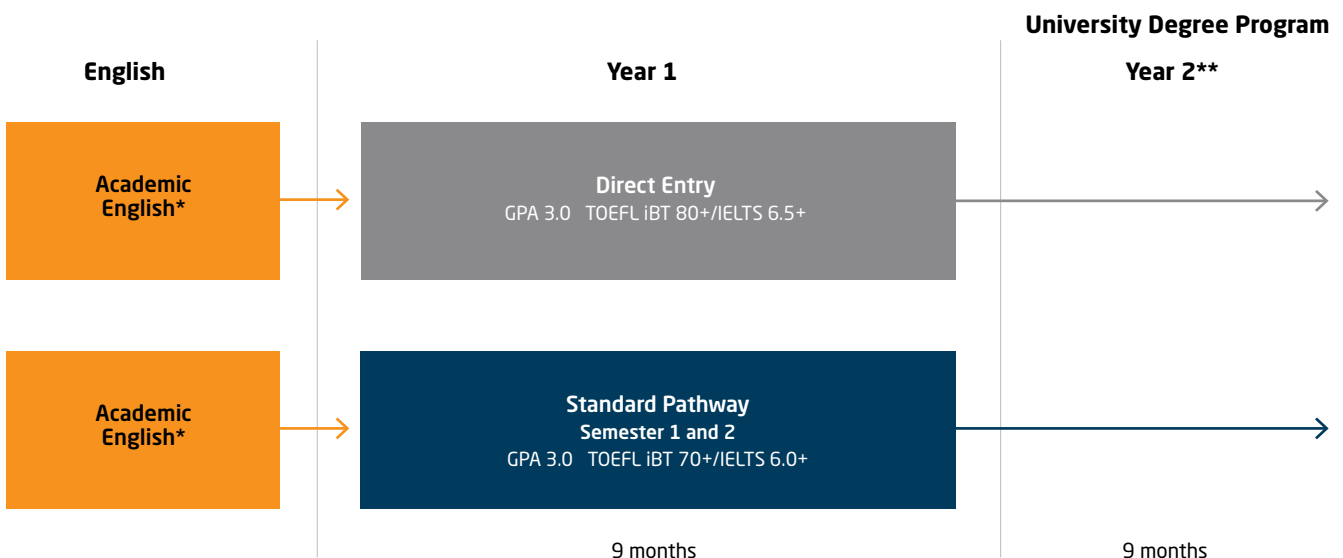
Decide if the Program is Right for You

The Graduate Pathway program is for students who:

- Want to study for a graduate degree in the US
- Desire additional academic, language and cultural support in order to succeed during the first year at a US university
- May need to improve English language skills

Annual Reviews

All master’s and doctoral students must undergo an annual review of their progress, although a department or program may require reviews on a more frequent basis.



*The length of your Academic English program before Pathway depends on your level of English.

**Length of graduate degree program depends on the academic area of study and the intended degree type and may take longer than two years to complete.

Fully Integrated University Experience

The academic courses included in the Graduate Pathway programs are carefully chosen to ensure student success in graduate-level studies. Academic courses are all existing SLU courses and most will provide an opportunity to study alongside both American and international students. The exact program structure and combination of classes taken will depend upon a student's previous academic record and future study plan. Students will be registered into required courses before their academic orientation at the INTO SLU Center.

In addition to intensive English instruction, students will also receive instruction in study skills and GRE/GMAT test preparation.

Student work is monitored by Graduate Pathway Coordinators who provide additional academic support for students who have difficulty in classes. The coordinators also assist students by working with academic department officials to obtain official approval of any changes that students may need to make to their study plans.

Program Benefits

Pathway students receive the highest level of support during their transition abroad, making it an ideal choice for international students who are driven to achieve high academic goals. Students who successfully complete a Graduate Pathway program are assured progression to a SLU graduate degree program upon submission of additional required application materials.

Other benefits include:

- Full integration with domestic and international students on the SLU campus
- Access to all SLU cultural events, athletic events and activities including SLU's state-of-the-art recreation center
- Classrooms and accommodations in the heart of SLU's convenient urban campus with shopping, dining and other services located nearby
- Highest level of support for student success
- Highly trained and experienced university instructors
- Academic advising throughout the program

Key Program Facts

Graduate Pathway Programs

- Applied Financial Economics
- Bioinformatics and Computational Biology
- Business Administration
- Engineering
- Health Data Science
- Law (LLM)
- Law (JD)
- Supply Chain Management
- Sustainability
- Urban Planning and Development

Start Dates

- Fall: August 15, 2016
- Spring: January 12, 2017

Program Duration

- Standard Pathway: 2 semesters

Entry Requirements - Standard Pathway

See grids on pages 34-38 for specific program entry requirement materials.

Language Requirements - Standard Pathway

- TOEFL iBT 70+ **or**
- IELTS 6.0+ **or**
- Completion of Academic English Level 6 **and**
- SLUWE 3+ and PBT 523+

intohigher.com/slu/grad



Graduate Pathway Programs

Master of Science in Applied Financial Economics					
Standard Pathway - 2 Semesters	Degree Program Components		Program Information		
Fall: August 15, 2016 Spring: January 12, 2017	39 credit hour program 9 credit hours apply from Pathway 30 credit hours remaining toward degree				
Entry Requirements <ul style="list-style-type: none"> Undergraduate degree or equivalent Recommended GPA 3.0 on 4.0 scale Current resume Two (2) letters of recommendation Personal statement Language requirement: <ul style="list-style-type: none"> TOEFL iBT 78 or IELTS 6.0 or Completion of Academic English Level 6 and SLU Writing Examination 3+ and PBT 547 	Semester 1	Course Title	Credit Hours	Progression Requirements <ul style="list-style-type: none"> Minimum of 3.0 cumulative SLU GPA Grade of B or better in all business courses No C-/D/F/W/I/P/NP/S/U grades SLUWE 4+ GMAT 500 overall (23V, 29Q) or GRE 146V+, 155Q <p>These courses are generally delivered through the INTO SLU Center and are for Pathway students only.</p>	
	EAP 5XXX	Introduction to Graduate Study I	3		
	EAP 5XXX	Academic English for International Graduate Students I	3		
	OPM 5020	Applied Business Statistics	3		
		GRE/GMAT Test Preparation	0		
	Total				9
	Semester 2	Course Title	Credit Hours		
	EAP 5XXX	Academic English for International Graduate Students II	3		
	ACCT 5010	Accounting for Managers	3		
	ECON 5010	Economics for Managers	3		
Total			9		

Master of Science in Bioinformatics and Computational Biology					
Standard Pathway - 2 Semesters	Degree Program Components		Program Information		
Fall: August 15, 2016	30 credit hour program 9 credit hours apply from Pathway 21 credit hours remaining toward degree				
Entry Requirements <ul style="list-style-type: none"> Undergraduate degree or equivalent in Biology, Biochemistry, Computer Science, Mathematics, Statistics or closely related field Recommended GPA 2.75 on 4.0 scale Language requirement: <ul style="list-style-type: none"> TOEFL iBT 70 (with 13+ sub-scores in reading and listening) or IELTS 6.0 (with 5.5+ sub-scores in reading and listening) or Completion of Academic English Level 6 and SLU Writing Examination 3+ and PBT 523 	Semester 1	Course Title	Credit Hours	Progression Requirements <ul style="list-style-type: none"> Minimum of 3.0 cumulative SLU GPA Grade of B- or better in BCB 5200 and BCB 5250 No C-/D/F/W/I/P/NP/S/U grades SLUWE 4+ <p>Notes The well-prepared students has had most but not all of the following: a year of biology, chemistry and calculus, Molecular and cellular biology, genetics, an intro to programming, data structures, discrete math and statistics.</p> <p>These courses are generally delivered through the INTO SLU Center and are for Pathway students only.</p>	
	EAP 5XXX	Introduction to Graduate Study I	3		
	EAP 5XXX	Academic English for International Graduate Students I	3		
	BCB 5200	Intro to Bioinformatics I	3		
	Total				9
	Semester 2	Course Title	Credit Hours		
	EAP 5XXX	Academic English for International Graduate Students II	3		
	BCB 5250	Intro to Bioinformatics II	3		
		Elective	3		
	Total				9

Master of Business Administration					
Standard Pathway - 2 Semesters	Degree Program Components		Program Information		
Fall: August 15, 2016 Spring: January 12, 2017	48 credit hour program 12 credit hours apply from Pathway 36 credit hours remaining toward degree				
Entry Requirements <ul style="list-style-type: none"> Undergraduate degree or equivalent Recommended GPA 3.0 on 4.0 scale Current resume 2 year work experience recommended Two (2) professional references Personal statement Language requirement: <ul style="list-style-type: none"> TOEFL iBT 78 or IELTS 6.0 or Completion of Academic English Level 6 and SLU Writing Examination 3+ and PBT 547 	Semester 1	Course Title	Credit Hours	Progression Requirements <ul style="list-style-type: none"> Minimum of 3.0 cumulative SLU GPA Grade of B or better in all business courses No C-/D/F/W/I/P/NP/S/U grades SLUWE 4+ GMAT 500 overall (23V, 29Q) or GRE 146V+, 155Q <p>These courses are generally delivered through the INTO SLU Center and are for Pathway students only.</p>	
	EAP 5XXX	Academic English for International Graduate Students I	3		
	OPM 5020	Applied Business Statistics	3		
	ACCT 5010	Accounting for Managers	3		
		GRE/GMAT Test Preparation	0		
	Total				9
		Semester 2	Course Title		Credit Hours
	EAP 5XXX	Academic English for International Graduate Students II	3		
	OPM 5050	Operations Management	3		
	ECON 5010	Economics for Managers	3		
Total			9		

Master of Science in Engineering ¹					
Standard Pathway - 2 Semesters	Degree Program Components		Program Information		
Fall: August 15, 2016 Spring: January 12, 2017	30 credit hour program 6 credit hours apply from Pathway 24 credit hours remaining toward degree				
Entry Requirements <ul style="list-style-type: none"> Undergraduate degree or equivalent in Engineering or closely related field Recommended GPA 3.0 on 4.0 scale Current resume Professional goals statement Three (3) letters of recommendation Language requirement: <ul style="list-style-type: none"> TOEFL iBT 70 or IELTS 6.0 or Completion of Academic English Level 6 and SLU Writing Examination 3+ and PBT 523 	Semester 1	Course Title	Credit Hours	Progression Requirements <ul style="list-style-type: none"> Minimum of 3.0 cumulative SLU GPA Grade of B or better in all EAP, Mathematics and Engineering Courses No C-/D/F/W/I/P/NP/S/U grades SLUWE 4+ GRE score of at least 150Q Letter of recommendation from a SLU faculty member <p>Notes</p> <p>¹ Master of Science in Engineering offers the following concentrations: Aerospace & Mechanical Engineering, Biomedical Engineering, Civil Engineering, Electrical & Computer Engineering and Engineering Physics</p> <p>² Partial Differential Equations or equivalent is recommended</p> <p>³ Course to be determined in consultation with the program director</p> <p>These courses are generally delivered through the INTO SLU Center and are for Pathway students only.</p>	
	EAP 5XXX	Introduction to Graduate Study I	3		
	EAP 5XXX	Academic English for International Graduate Students I	3		
	MATH 4XXX	Mathematics Elective ²	3		
		GRE Preparation	0		
	Total				9
		Semester 2	Course Title		Credit Hours
	EAP 5XXX	Introduction to Graduate Study II	3		
	EAP 5XXX	Academic English for International Graduate Students II	3		
	ENG 5XXX	Engineering Elective ³	3		
Total			9		

Graduate Pathway Programs

Master of Science in Health Data Science

Standard Pathway - 2 Semesters

Fall: August 15, 2016
Spring: January 12, 2017

Degree Program Components

30 credit hour program
6 credit hours apply from Pathway
24 credit hours remaining toward degree

Program Information

Entry Requirements

- Undergraduate degree or equivalent in Mathematics, Statistics, Computer Science, Biology or closely related field
- Recommended GPA 2.75 on 4.0 scale
- Current resume
- Language requirement:
 - TOEFL iBT 70 (with 13+ sub-scores in reading and listening) **or**
 - IELTS 6.0 (with 5.5+ sub-scores in reading and listening) **or**
 - Completion of Academic English Level 6 **and**
 - SLU Writing Examination 3+ and PBT 523

Semester 1	Course Title	Credit Hours
EAP 5XXX	Intro to Graduate Study I	3
EAP 5XXX	Academic English for International Graduate Students I	3
HDSXXXX	Programming for Data Sciences ¹	3
Total		9
Semester 2	Course Title	Credit Hours
EAP 5XXX	Intro to Graduate Study II	3
EAP 5XXX	Academic English for International Graduate Students II	3
HDS XXXX	Analytics and Statistical Programming ¹	3
Total		9

Progression Requirements

- Minimum of 3.0 cumulative SLU GPA
- Grade of B or better in all Programming Courses
- No C-/D/F/W/I/P/NP/S/U grades
- SLUWE 4+

Notes

¹ When starting in the Spring, students will take Analytics and Statistical Programming in Semester 1 and Programming for Data Scientists in Semester 2

These courses are generally delivered through the INTO SLU Center and are for Pathway students only.

Master of Science in Supply Chain Management

Standard Pathway - 2 Semesters

Fall: August 15, 2016
Spring: January 12, 2017

Degree Program Components

42 credit hour program
12 credit hours apply from Pathway
30 credit hours remaining toward degree

Program Information

Entry Requirements

- Undergraduate degree or equivalent
- Recommended GPA 3.0 on 4.0 scale
- Current resume
- Two (2) letters of recommendation
- Personal statement
- Language requirement:
 - TOEFL iBT 78 **or**
 - IELTS 6.0 **or**
 - Completion of Academic English Level 6 **and**
 - SLU Writing Examination 3+ and PBT 547

Semester 1	Course Title	Credit Hours
EAP 5XXX	Academic English for International Graduate Students I	3
OPM 5020	Applied Business Statistics	3
ACCT 5010	Accounting for Managers	3
	GRE/GMAT Test Preparation	0
Total		9
Semester 2	Course Title	Credit Hours
EAP 5XXX	Academic English for International Graduate Students II	3
OPM 5050	Operations Management	3
ECON 5010	Economics for Managers	3
Total		9

Progression Requirements

- Minimum of 3.0 cumulative SLU GPA
- Grade of B or better in all business courses
- No C-/D/F/W/I/P/NP/S/U grades
- SLUWE 4+
- GMAT 500 overall (23V, 29Q) or GRE 146V+, 155Q

These courses are generally delivered through the INTO SLU Center and are for Pathway students only.

Master of Laws in American Law for Foreign Lawyers					
Standard Pathway - 2 Semesters	Degree Program Components		Program Information		
Fall: August 15, 2016 Spring: January 12, 2017	24 credit hour program 0 credit hours apply from Pathway 24 credit hours remaining toward degree				
Entry Requirements <ul style="list-style-type: none"> • First degree in law adequate for Bar qualification in home country (LL.B or equivalent) • Recommended GPA 2.9 on 4.0 scale • Current resume • Statement of purpose • 2 letters of recommendation • Language requirement: <ul style="list-style-type: none"> • TOEFL iBT 79 or • IELTS 6.5 or • Completion of Academic English Level 6 and • SLU Writing Examination 3+ and PBT 547 	Semester 1	Course Title	Credit Hours	Progression Requirements <ul style="list-style-type: none"> • Minimum of 3.0 cumulative SLU GPA • Grade of B or better Introduction to US Law Course • No C-/D/F/W/VP/NP/S/U grades • SLUWE 4+ <p>These courses are generally delivered through the INTO SLU Center and are for Pathway students only.</p>	
	EAP 5XXX	Introduction to Graduate Study I	3		
	EAP 5XXX	Academic English for International Graduate Students I	3		
	EAP 5XXX	Speaking, Writing and Reading English Lab I	3		
	LAW XXXX	Pro-Seminar in US Legal Studies	1		
			Total		10
		Semester 2	Course Title		Credit Hours
	EAP 5XXX	Introduction to Graduate Study II	3		
	EAP 5XXX	Academic English for International Graduate Students II	3		
	EAP 5XXX	Speaking, Writing and Reading English Lab II	3		
LAW XXXX	Introduction to US Law: Legal Research and Writing	3			
		Total	12		

Juris Doctor for Foreign Lawyers					
Standard Pathway - 2 Semesters	Degree Program Components		Program Information		
Fall: August 15, 2016	61 credit hour program 0 credit hours apply from Pathway 61 credit hours remaining toward degree				
Entry Requirements <ul style="list-style-type: none"> • First degree in law adequate for Bar qualification in home country (LL.B or equivalent) • Recommended GPA 3.0 on 4.0 scale • Current resume • Statement of purpose • Character and fitness questionnaire • 2 letters of recommendation • Language requirement: <ul style="list-style-type: none"> • TOEFL iBT 90 or • IELTS 7.0 or • Completion of Academic English Level 6 and • SLU Writing Examination 3+ and PBT 577 	Semester 1	Course Title	Credit Hours	Progression Requirements <ul style="list-style-type: none"> • Minimum of 3.0 cumulative SLU GPA • Grade of B or better Introduction to US Law Course • No C-/D/F/W/VP/NP/S/U grades • SLUWE 4+ • LSAT score of 152 or above • Complete LSAC Credential Assembly Service (CAS) file required • SLU Law JD application <p>These courses are generally delivered through the INTO SLU Center and are for Pathway students only.</p> <p>Because students will be required to register for the LSAT and the LSAC Credential Assembly Service as part of the process of submitting the SLU LAW application, applicants may wish to submit their transcripts to LSAC before coming to the U.S. SLU LAW will review Pathways participants and may, at the discretion of the Admissions Committee, admit any candidates who may not meet all the qualifications set forth above but who the Committee decides are nevertheless qualified for admission.</p>	
	EAP 5XXX	Introduction to Graduate Study I	3		
	EAP 5XXX	Academic English for International Graduate Students I	3		
	EAP 5XXX	Speaking, Writing and Reading English Lab I	3		
	LAW XXXX	Pro-Seminar in US Legal Studies	1		
		LSAT Test Preparation	0		
			Total		10
		Semester 2	Course Title		Credit Hours
	EAP 5XXX	Introduction to Graduate Study II	3		
	EAP 5XXX	Academic English for International Graduate Students II	3		
EAP 5XXX	Speaking, Writing and Reading English Lab II	3			
LAW xxxx	Introduction to US Law: Legal Research and Writing	3			
		Total	12		

Graduate Pathway Programs

Master of Science in Sustainability			
Standard Pathway - 2 Semesters	Degree Program Components		Program Information
Fall: August 15, 2016	30 credit hour program 12 credit hours apply from Pathway 18 credit hours remaining toward degree		
Entry Requirements <ul style="list-style-type: none"> Undergraduate degree or equivalent Recommended GPA 3.0 on 4.0 scale Current resume Three letters of recommendation Professional goal statement Language requirement: <ul style="list-style-type: none"> TOEFL iBT 75 or IELTS 6.0 or Completion of Academic English Level 6 and SLU Writing Examination 3+ and PBT 537 After a preliminary review based on above mentioned criteria, the finalists will be requested to participate in a Skype interview with faculty before acceptance into the program 	Semester 1	Course Title	Credit Hours
	EAP 5XXX	Academic English for International Graduate Students I	3
	SUS 5010	Sustainability Foundations	3
	SUS 5020	Environmental Aspects of Sustainability	3
		GRE Test Preparation	0
		Total	9
	Semester 2	Course Title	Credit Hours
	EAP 5XXX	Academic English for International Graduate Students II	3
	SUS 5030	Sustainability in Society and Cultures	3
	SUS 5040	Sustainable Business Practices	3
	Total	9	
	Progression Requirements		<ul style="list-style-type: none"> Minimum of 3.0 cumulative SLU GPA Grade of B or better in all major courses No C-/D/F/W/I/P/NP/S/U grades GRE score (verbal 153, quantitative 151, writing 3.5) SLUWE 4+ <p>These courses are generally delivered through the INTO SLU Center and are for Pathway students only.</p>

Master of Science in Urban Planning and Development			
Standard Pathway - 2 Semesters	Degree Program Components		Program Information
Fall: August 15, 2016	30 credit hour program 12 credit hours apply from Pathway 18 credit hours remaining toward degree		
Entry Requirements <ul style="list-style-type: none"> Undergraduate degree or equivalent Recommended GPA 3.0 on 4.0 scale Current resume Three letters of recommendation Professional goal statement Language requirement: <ul style="list-style-type: none"> TOEFL iBT 75 or IELTS 6.0 or Completion of Academic English Level 6 and SLU Writing Examination 3+ and PBT 537 After a preliminary review based on above mentioned criteria, the finalists will be requested to participate in a Skype interview with faculty before acceptance into the program 	Semester 1	Course Title	Credit Hours
	EAP 5XXX	Academic English for International Graduate Students I	3
	UPD 5000	Foundations of Planning	3
	GIS 5010	Introduction to GIS	3
		GRE Preparation	0
		Total	9
	Semester 2	Course Title	Credit Hours
	EAP 5XXX	Academic English for International Graduate Students II	3
	UPD 5200	Local Economic Development Policy and Practice	3
	UPD 5500	Real Estate Finance	3
	Total	9	
	Progression Requirements		<ul style="list-style-type: none"> Minimum of 3.0 cumulative SLU GPA Grade of B or better in all major courses No C-/D/F/W/I/P/NP/S/U grades GRE score (verbal 153, quantitative 151, writing 3.5) SLUWE 4+ <p>These courses are generally delivered through the INTO SLU Center and are for Pathway students only.</p>

Centers of Distinction

Saint Louis University houses numerous academic centers and institutes within its various colleges. In addition to these entities, the university supports several degree-granting multidisciplinary research centers.



Center for Advanced Dental Education

slu.edu/cade

With a long tradition of excellence, CADE offers nationally recognized programs in orthodontics, periodontics and endodontics that prepare dentists to be astute and aware clinicians.



Center for Outcomes Research

slu.edu/medicine/slucor

Focused on solving complex design and analysis problems in medicine and public health, the center offers state-of-the-art evaluations of the services, medications, devices and diagnostics that can optimize health and well-being.



Albert Gnaegi Center for Health Care Ethics

slu.edu/bioethics

With a curriculum focused on teaching, service and research, the center prepares individuals for careers in academic, corporate, research and clinical bioethics settings.



Center for Sustainability

slu.edu/sustainability

Guided by an overarching mission to develop creative, collaborative solutions to pressing environmental challenges, the center prepares students for success in one of the fastest growing industries in the US.



INTO SLU Tutoring
Center is available for
students in all programs

English Language Program



7 levels of Academic English instruction

Enjoy access to all campus services and activities



▼ Make friends and practice English with students from all over the world.



Academic English

Program Description

The Academic English program at INTO Saint Louis University prepares international students for university study in the US. The academically rigorous program provides international students with high-quality English language instruction and the academic skills to succeed at SLU through development of:

- Listening
- Speaking
- Reading
- Writing
- Academic study skills

Program Highlights

- Intensive English to prepare for university study
- Academic advising and coaching throughout the program
- Service learning opportunities
- Small classes of 15 students
- Highly trained and experienced instructors

English Language Placement

All Academic English students are required to take an English Language Placement test during orientation. The placement testing consists of an institutional TOEFL (PBT) and the Saint Louis University Writing Examination.

Students will be placed in the appropriate level based on the placement exam results. To move from one level of Academic English to the next, students are required to meet the appropriate TOEFL PBT and SLUWE score.

Academic English Levels	IELTS	IBT	PBT	PTEA
Foundation	<4	<37	0-399	<38
Level 1	<4	<37	400-419	<38
Level 2	4.0	37-41	420-439	<38
Level 3	4.5	42-47	440-459	38-39
Level 4	5.0	48-54	460-484	40-42
Level 5	5.5	55-64	485-509	43-45
Level 6	6.0	65-79	510-547	46-53

Program Outcomes

After finishing this intensive program, successful students will be able to:

- Interact comfortably in the US classroom with professors and fellow students
- Understand US values in an academic setting
- Present their spoken and written ideas accurately and effectively in English
- Write research papers with proper use of citations and references
- Use the internet and SLU Library databases to conduct academic research
- Read, understand and critically evaluate academic texts
- Understand and use vocabulary common to academic disciplines
- Take useful and accurate notes in academic lectures and presentations
- Develop and deliver oral presentations

Key Program Facts

Start Dates

- Fall: August 15, 2016
- Spring: January 12, 2017
- Summer: May 24, 2017

Program Duration

- Fall and Spring semesters are each 16 weeks in length; Summer is 10 weeks
- 3 terms per year
- Minimum enrollment of one term

Academic Entry Requirement

- Recommended high school GPA 3.0 on a 4.0 scale

English Language Entry Requirement

- None; students will be assessed and placed upon arrival

Age Requirement

- 16 years old and above

Program Structure

- 6 levels of instruction and a foundation level
- Average 22 hours per week for Fall and Spring; average 28 hours per week for Summer
- Course work covering the core skills of reading, writing, listening, speaking, vocabulary and grammar

Progression Requirements from Academic English

To Undergraduate Standard Pathway

- Completion of Academic English Level 5 **and**
- SLUWE 3+ and PBT 510

To Direct Undergraduate Admission

- Completion of Academic English Level 6 with no grades below C **and**
- SLUWE 4

To Graduate Standard Pathway

- Completion of Academic English Level 6 **and**
- SLUWE 4

To Direct Graduate Admission

- Completion of Academic English Level 6 with no grades below B **and**
- SLUWE 3+ and PBT 523

Housing Requirement

Academic English Only Students

- No on-campus housing requirement

Academic English Students Progressing to an Undergraduate Pathway

- Students must live on campus for their first four consecutive semesters (Fall/Spring)

SLU offers students plenty of opportunities to get involved with more than 200 student organizations, numerous guest speakers, plenty of great concerts and countless on-campus events.



32 full-time employees in the Student Success Center to support students

Student Life



92%

of graduates are employed
in a job related to their major
within six months





- 1 Beracha Hall - INTO SLU Center Home
- 2 Marguerite Residence Hall
- 3 Fusz Residence Hall
- 4 Center for Global Citizenship
- 5 Pius XII Memorial Library
- 6 Griesedieck Residence Hall
- 7 Busch Student Center
- 8 Marchetti Towers (East and West)
- 9 Billiken Sports Complex
- 10 Olive Parking Garage
- 11 Chaifetz Arena



Academic Resources

SLU offers a variety of academic resources and services aimed at helping students succeed in and outside of the classroom.

First-year Experience

Innovative programs for first-year students help ensure that their transition to SLU is successful. In addition, sophomores, juniors and seniors can participate in programs tailored just for them.

Learning Communities

SLU Learning Communities allow students to transition to SLU in a supportive, creative and academically focused environment, and help them form early bonds that will promote their connection to campus life, as well as encourage their excitement for learning. Learning Communities are intentional, inclusive communities formed around academically oriented themes where students learn together and live on the same floor or floors of a residence hall. First-year Interest Groups offer clusters of one to four courses that freshman Learning Community students take together during their fall semester.

Major Exploration

Students are supported by academic advisors and career counselors who assist them in making choices about majors and careers using exploratory and educational planning methods and processes.

SLU Libraries

The three libraries at SLU have extensive collections to support teaching, learning, researching, studying and clinical care. Within each library, students will also find specialized collections. The goal for all SLU libraries is to provide students with the information needed—anytime, anywhere—along with library buildings that are clean, quiet, comfortable and conducive to study and research.

University Writing Services

University Writing Services, housed in the Student Success Center, is committed to the campus-wide improvement of student writing through one-on-one peer consultation, the administration of workshops, and the facilitation of writing groups. UWS wants to help improve the culture of writing on SLU's campus and to help undergraduate and graduate students identify themselves as writers within their respective disciplines.

Tutoring

Located within the Student Success Center, the mission of the Tutoring and Supplemental Instruction Services is to foster a supportive environment where students feel empowered to identify and achieve their academic goals. Highly qualified, peer tutors and Supplemental Instruction leaders are available to mentor students in effective problem solving, critical thinking, and study skills in pursuit of becoming life-long learners.

Supplemental Instruction

Supplemental Instruction is available for some of the largest lectures in the following subject areas: anatomy, biology, chemistry, physics and psychology. The one-hour group tutoring sessions are available throughout the week and provide time to collaborate, discuss, and practice material discussed during lectures. The tutors are available for any student enrolled in the course, even if the SI leader is not sitting in your class.



“Saint Louis University is creating the leaders of tomorrow by giving us the necessary skills to go back home and be able to make a change and give the best of ourselves—always serve more, be more.”

Camilo Rivera, Nicaragua



University Services

Saint Louis University provides many academic resources, facilities and services to help students be successful. SLU gives students access to facilities that include state-of-the-art technology classrooms, a mobile app to help plan their day, transportation around campus and numerous educational services.

Busch Student Center

SLU's Busch Student Center offers several spaces available to rent for conferences, meetings and other special events. It features 18 meeting rooms, state-of-the-art technology, on-site catering and floral services, and nearby enclosed parking.

Additionally, the BSC has several student dining options and is home to the Saint Louis University Barnes & Noble Bookstore where students can purchase everything from textbooks to sweatshirts.

Visa and Immigration Support

The immigration staff is available to answer immigration questions and help students maintain their student visa status while they study in the US.

Transportation on Campus

The SLU Ride program offers secure transportation to areas on or adjacent to campus, including the nearby light rail station, MetroLink. More than 20,000 safety escorts are provided each year.

Wireless Connectivity

High-speed wireless internet is available throughout campus.

Mobile

The SLU mobile app gives students access to campus maps, shuttle tracking, class schedules, SLU news and more.

Classrooms

Classrooms are equipped with fully integrated digital presentation systems that include high-definition projection, LCD displays and video walls, as well as tools to support distance learning and lecture capture.

Collaboration

Industry-leading video collaboration technology offers nontraditional meeting options for faculty, staff and students across the globe.

High tech classrooms
with integrated digital
presentation capabilities



SLU Mobile App available for
students to track shuttles, class
schedules and more



▼ There are always plenty of activities going on at SLU to keep students involved



▼ International students integrate with US students in and out of the classroom



INTO SLU Student Services

INTO SLU Student Services creates an empowering student experience that promotes learning, engagement and success, while helping students transition to university life in the US.

Housing Coordination

The Housing and Arrivals Coordinator answers questions about housing options, room types, roommate selection or meal plans.

Wellness

The INTO SLU Student Services team connects students to resources on campus and in the community. INTO SLU staff want to help with any issues students might have, such as illness, questions about family and childcare, or homesickness.

Orientation Program

Orientation is a time for new students to get to know the SLU campus, the INTO SLU Center and everything else needed to be successful as a student in the US. During orientation, students will take placement exams, meet with an academic advisor, make connections with other students and campus resources, and register for classes.

English Language Center

The English Language Center provides specialized writing support for all Saint Louis University students whose native language is not English. In one-on-one consultations and in group workshops, ELC writing consultants provide feedback and offer strategies to improve your writing at every stage, from brainstorming for ideas, to organizing a draft, to polishing the final document. The ELC also offers assistance in other language-related areas, including TOEFL and SLUWE test-taking strategies, multi-media projects, grammatical accuracy, research skills and conversation practice.

Airport Transfers

INTO SLU can arrange for transportation to meet students at St. Louis International Airport and take them directly to their accommodation.

Trips and Activities

Getting involved on campus is one of the best ways to adjust to life in the US. INTO SLU organizes a variety of activities including sporting events, outdoor activities and trips in the region. These activities are open to any SLU student, and are a great way to meet new friends and practice speaking English.

Student Ambassadors

Student Ambassadors share experiences and answer questions about life in St. Louis and at SLU. They provide students with ways to be successful as a student in an American university and share methods for communicating with classmates, roommates and teachers.



“My favorite thing about SLU is the numerous opportunities to engage with social justice issues—whether that is through service, community building, advocacy clubs, events, trainings or immersion trips. This is a great environment to grow, learn and feel challenged while also feeling supported by community.”

Merette Khalil, Egypt



▼ Many major entertainment acts often perform on campus



▲ There are more than 200 student organizations on campus



On-campus speaker series for students

Many big name artists and bands play at Chaifetz Arena each year

Life on Campus

At Saint Louis University, there's life in class and then there's life. The holistic approach is not only concerned with the health of the mind, but also the health of the heart, body and spirit. This is why campus life is so rich at SLU—to encourage students to become more complete, stronger and aware of themselves.

Involvement and Entertainment

Student Organizations: SLU offers more than 200 student organizations, including service groups, academic honoraries, fraternities and sororities, intramural sports, musical groups, media programming groups and special interest clubs.

Speakers: The student-led Great Issues Committee brings prominent speakers to campus such as Rainn Wilson (actor and founder of Soul Pancake), Mayim Bialik (neuroscientist and *Big Bang Theory* actress), Michelle Kwan (noted US figure skater, Olympic medalist and longtime supporter of the Special Olympics) and Suchin Pak (*MTV* news correspondent).

Musicians: The Student Activities Board brings major entertainment acts to Chaifetz Arena and Busch Student Center. Past performers include the Walk the Moon, the All-American Rejects, Icona Pop and the Lumineers.

Center for Global Citizenship: In the heart of campus, the center brings all of SLU's international and cross-cultural academic and support services under one roof. It includes a student lounge with access to international media outlets, conference rooms with worldwide teleconferencing abilities and a high-tech auditorium with more than 1,000 seats.

Service and Community Engagement

Students are encouraged to serve, to learn and to engage. They have the opportunity to serve both the local and global communities at campus-wide service-learning efforts that foster university-community research partnerships. This is done to enhance personal and social responsibility by transforming volunteers into effective servant leaders and advocates of social justice.

Personal Beliefs Encouraged

Regardless of their religious identity, practice or tradition, SLU students are encouraged to form strong relationships with faith as a centerpiece for their own developing lives. Campus organizations, affiliate ministers and nearby houses of worship help facilitate this growth.

Volunteerism

More than 80% of SLU students volunteered at least once during the previous academic year—more than triple the national average among college students. Students, faculty and staff annually volunteer 1.6 million hours of community service.

Campus Neighborhoods

Just steps away from Saint Louis University, the Grand Center arts district of St. Louis is home to theatres, museums, restaurants and more. Watch a touring Broadway musical, listen to the world-class St. Louis Symphony Orchestra or enjoy a contemporary art exhibit.

Nearby neighborhoods for dining, shopping and people watching include The Hill, the Central West End, the University City Loop, where you'll find the St. Louis Walk of Fame, and the historic Soulard neighborhood—home to the country's second largest Mardi Gras celebration and an open-air farmers market.

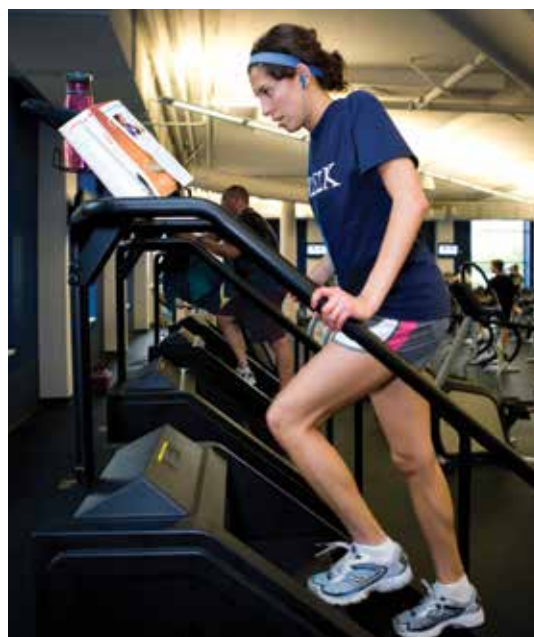
SLU's campus is located just steps away from the arts district



Watch student life videos:
tinyurl.com/SLUstudentlife



▼ The men's and women's soccer teams at SLU are among the best in the US



▼ An indoor lap pool is available in the Simon Recreation Center



Sports and Recreation

In addition to the 18 NCAA Division I varsity sports teams, SLU offers a variety of on-campus options for staying fit and feeling good in body, mind and spirit. From ultra-competitive intercollegiate athletics to recreational activities and intramural sports, SLU has health and well-being options for everyone.

Campus Recreation

Campus Recreation provides quality recreational opportunities which aid and encourage a healthy lifestyle to the Saint Louis University community.

Student Wellness

Simon Recreation Center and Salus Fitness Center:

Membership to both facilities is included in the SLU experience for all students. The Simon Recreation Center is a three-level, 120,000-square-foot facility located in the heart of the campus. The center offers:

- More than 200 pieces of fitness equipment
- Six multipurpose courts with a track
- Four racquetball courts and one squash court
- Six group exercise rooms
- An indoor pool with six lanes, a dive well and a whirlpool
- A wellness suite and juice bar
- A climbing wall, two outdoor leisure pools and a sand volleyball court

Holistic Health: SLU is committed to holistic student development and educating the whole student. Many departments throughout the university work together to provide activities, programs and services to help students maintain balance, support healthy lifestyles and enhance their well-being.

Club Sports

Club sports provide an opportunity for students to participate in fun, competitive sports. The sport clubs compete against other colleges and universities across the nation. Clubs offer opportunities for all levels of experience to receive valuable leadership skills. The level of competition does vary between each club. Some clubs are intramural, while others compete at the varsity level. SLU offers 35 club sports ranging from baseball and softball, to rugby and squash.

Intramural Sports

Intramural Sports at SLU is aimed at providing each student with the opportunity to participate in their favorite type of competition, and to explore new or untried recreational activities. There is an opportunity for students to participate no matter what the level of ability.

Billikens Athletics

SLU is the only NCAA Division I school located in St. Louis. SLU's 10,600-seat, state-of-the-art Chaifetz Arena is home to SLU basketball games and volleyball matches.

Varsity Teams:

- Men's Baseball
- Basketball*
- Cross Country*
- Women's Field Hockey
- Indoor Track and Field*
- Outdoor Track and Field*
- Soccer*
- Swimming and Diving*
- Women's Softball
- Tennis*
- Women's Volleyball

*Both men's and women's teams

What is a Billiken?

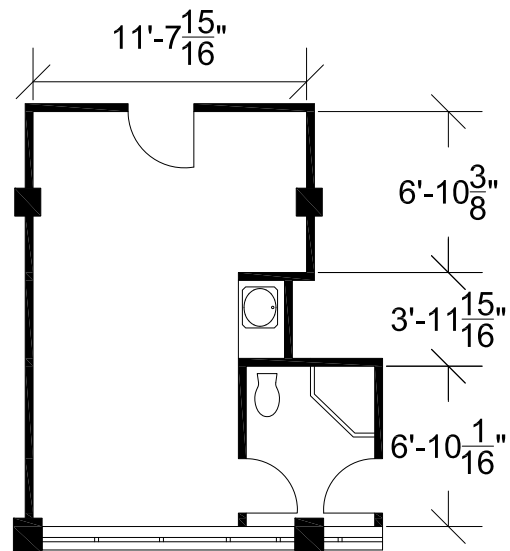
The Billiken is a symbol of good luck that was popular in the early 1900s. In 1908, Florence Pretz, an art teacher, received a patent for her version of an ancient figure. Later, the Billiken Co. of Chicago adopted the likeness, giving it the name. Manufactured as a bank and statuette, the Billiken reached its peak of popularity in 1911.

Its association with SLU can be traced back to around 1910, when local sportswriters thought that SLU football coach John Bender bore a striking resemblance to the impish creature. One writer drew a cartoon of Bender as a Billiken, posted it in a drugstore window and dubbed the football team "Bender's Billikens." The public took up the designation, and it soon became the official nickname of all SLU teams.





▲ Students dining at one of the on-campus dining halls



▲ Double-occupancy room with shared bath in Marguerite Hall



Housing and Dining

Saint Louis University considers the residential experience an integral part of a student's total education. Students who live on campus often have a more productive and satisfying college experience than those who live off campus.

Information for Parents and Families

SLU is focused on creating meaningful environments that support the growth and development of students. Priorities include providing safe and secure housing, facilitating experiences to assist students in their own understanding of self and others and discerning what it means to live within community. Every effort is made to foster communities that are healthy, inclusive learning environments that support students as they matriculate through Saint Louis University. Learning Communities assist students in all aspects of their lives through creating a healthy mind, body and spirit.

All first-year and second-year undergraduate international students are required to live on campus for four semesters at Saint Louis University.

On-campus Experience

By living in our residential communities, students are not only supported in their academic pursuits, but also are challenged to grow as individuals who will be successful in assuming their civic responsibilities after their Saint Louis University experience. Developing relationships with peers is vital to many students' success at college.

Numerous educational initiatives are designed to engage students in dialogue, interaction and perspective-taking, continuously challenging students to increase their understanding of the world in which they live.

Residence Halls

The campus housing and residence life system offers eight residence halls and four apartment complexes; and provides perhaps one of the most distinctive "out of classroom" educational experiences within the entire university.

Throughout the residence halls, students have the opportunity to become part of an academic learning community and/or first-year interest group. These opportunities allow students the chance to experience the cohesiveness and intimacy of a small cohort peer group, with similar academic, social and service interest; while still remaining closely engaged to and enjoying the cultural and scholarly resources of a large university.

Dining Options

Whether students want to grab a quick bite to eat in the residence hall or savor all the city has to offer, Saint Louis University and the surrounding neighborhoods have everything a student could want. Options such as vegan and vegetarian, halal and gluten-free are easily accessible from either the 22 on-campus or the countless number of off-campus dining facilities.

Meal Plans

All students living in campus housing, regardless of current course load are required to have a meal plan each semester. All students living on campus will sign up for their meal plan through the housing application process. This meal plan is charged to your student account and is preloaded onto your SLU Card.

Flex Dollars and Billiken Bucks

Flex dollars come with all meal plans and are used to purchase food. Flex dollars can be used at all DineSLU locations, and should be used at times when an all-you-care-to-eat meal is not what you want.

Billiken Bucks is a debit account plan. The funds that you deposit can be used for purchases at the Instructional Media Center, Bannister House, Saint Louis University Barnes & Noble Bookstore, Library (copying/printing), Information Technology Services-software sales, and all University DineSLU locations. Billiken Bucks may also be used at various off-campus vendors.



Internships and Working

Experiential education is an essential component of the college experience at SLU. Whether a student volunteers, works at an internship or gets field experience through the major, this experience bridges the gap between classroom learning and real-world experience.

Career Services

Career services are available to all students through the Student Success Center. By utilizing all that this service offers, students benefit during their years on campus and in the subsequent years following graduation.

Career Counseling

Career counseling is a process that allows students to explore, discover and connect to career or major options through collaborative one-on-one meetings with a Career Development Specialist.

These meetings help students to clarify a career or major path, identify career goals and provide support and guidance through the career decision-making and/or job search process.

Career Service Events

Many employers choose to have interviews on SLU's campus as part of their recruitment efforts to hire Saint Louis University students and alumni. These events take place in both the fall and spring and are scheduled for those seeking full-time, internship and summer opportunities. During this time, organizations representing a diverse range of career opportunities will schedule visits at SLU. Off-Campus interviews are scheduled at any time throughout the year.

Online Career Database

The SLU online career database is done through a service called Handshake which allows students to sign up free of charge to search job postings for part-time, full-time and internship opportunities.

Internships

Internships are typically one-time work or service experiences related to a student's major or career goal. The internship usually allows a student to work in a professional setting under the supervision and monitoring of practicing professionals. Internships can be paid or unpaid and the student may or may not receive academic credit for performing the internships. Completing an internship is one of the best career development experiences for an undergraduate student prior to graduation.

Reciprocity Assistance

The SLU Career Services' Reciprocity Program enables students and alumni to use the career related services of other colleges and universities for a targeted search in a certain geographical region. University career services offices around the country tend to have many job and internship postings local to their geographic area.

Companies Employing SLU Graduates

- American Airlines
- American Red Cross
- Amnesty International
- Anheuser-Busch
- Barnes-Jewish Hospital
- Boeing
- BP
- Build-A-Bear Workshop
- CBS Broadcasting
- Chicago Tribune
- CNN
- Enterprise Rent-A-Car
- Express Scripts
- Federal Bureau of Investigation
- FleishmanHillard
- General Electric Company
- IBM Global Services
- Mayo Clinic
- NASA
- Nike
- Pfizer
- Saint Louis University
- Target Brands
- US Department of Health and Human Services
- Wells Fargo
- Warner Bros.
- The White House

Alumni and Parents

The 120,876 former students that make up the Saint Louis University alumni community live in 146 countries around the world. Many alumni take part in the mentoring and networking program, helping ensure that the professional network for students has a solid foundation upon graduation.

Notable SLU Alumni

Enrique Bolaños

('62, Industrial Engineering)
Former President of Nicaragua

Gene Kranz

('54, Aerospace Engineering)
Former Director of NASA Mission Operations

Brian McBride

('93, Secondary Education and Teaching)
Former US Soccer Men's National Team player

David Merrick

('37, Law)
Broadway producer of nearly 100 Broadway shows and recipient of eight Tony Awards

Mike Isaacson

('86, Arts and Sciences, '96, MBA)
Executive Producer of the historic Muny
— the nation's oldest and largest outdoor theatre, located in Forest Park

Additionally, over the years, eight SLU alumni have been members of US Congress, and six have been St. Louis mayors, including current mayor **Francis Slay '80**.

Alumni Groups and Organizations

Saint Louis University has created a number of constituent groups to assist the university community in connecting with SLU through the common bond of a specifically focused interest. These opportunities organize and create bonds between alumni, parents and students to benefit the members of the organization and Saint Louis University.

SLUVisors

SLUVisors is an online mentoring platform that matches students with SLU alumni for help and advice in the forms of career conversations, resume critiques and mock interviews.

Parent and Family Programs

Parent and families are a vital part of the SLU community, which benefits from their focused energy and commitment to student success. Parents and families are invited to consider all the ways in which the existing Parent and Family Initiatives can assist in supporting students and making the Saint Louis University experience rewarding and memorable. Parents or family members of a SLU student automatically become a member of the Billiken Family and therefore automatically part of the Billiken Parent Association and entitled to its benefits.



Scholarships

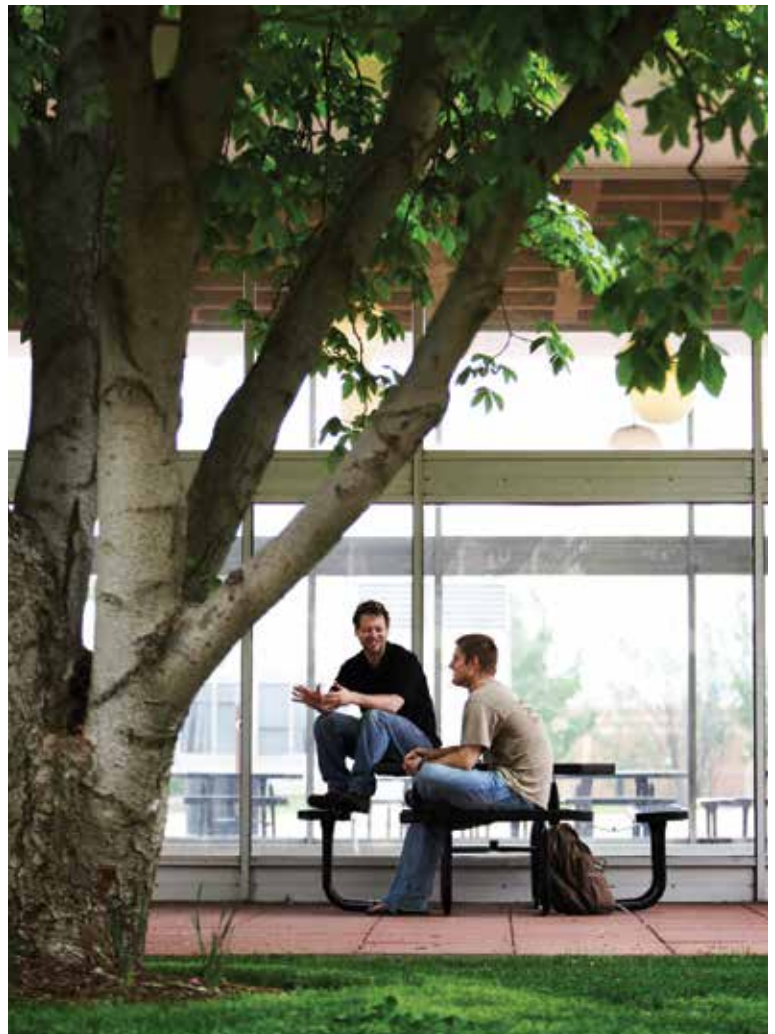
Undergraduate International Scholarships - First-year Students


Scholarship	Award/Benefits	Requirements	Application Dates
Merit-Based Scholarships	\$3,000 up to \$16,000 per year	Automatic consideration with your application	December 1 - Priority Deadline
Presidential Scholarship	Full-tuition scholarship	3.85+ GPA 1330+ SAT 30+ ACT Separate Application	December 1
Martin Luther King, Jr. Scholarship	\$13,000 floor scholarship	3.25+ GPA 1050+ SAT 23+ ACT Separate Application	February 1

INTO SLU Scholarships

INTO SLU is committed to helping talented and ambitious international students achieve their goals of studying at a world-class US university. In 2016-17 we are committed to investing \$100,000 in scholarships to help new applicants or students who have offer letters to attend one of INTO SLU's Pathway Programs. For more details please contact your INTO regional representative.

▼ Gene Kranz '54, former NASA flight director





Apply via the forms
in this brochure



Apply online at:
intohigher.com/slu/apply



7-10 day
turnaround
for completed
applications

Your Application



Successful applicants receive an offer letter



I-20s are sent within 3 days of confirming enrollment



Study at INTO Saint Louis University

INTO SLU Application Process

1. Determine Course of Study

Explore our website to learn about our academic and English language programs to decide which program is right for you. Read about INTO SLU's Pathway and English language programs: intohigher.com/slu/programs

2. Check Requirements

Learn if your academic and language scores meet admission requirements for your program of choice. If your language score does not meet the requirement, learn how we can help you. Detailed admission requirements can be found at: intohigher.com/slu/programs

3. Apply

To apply online, visit: intohigher.com/slu/apply

Submit your application and required documents to: INTOadmissions@slu.edu

4. Send Required Documents

The following documents will be needed to complete the application process:

- Transcripts (copies in English and native language)
- Diplomas (copies in English and native language)
- Language proficiency scores, if applicable
- Test scores, if applicable
- Passport
- Evidence of funding
- Additional supporting documents that are recommended, but not required, such as school profile, extracurricular activities, service/volunteer activities, etc.

5. Application Processing

We will notify you by email as soon as your application is received. You may be asked to provide any missing application documents. Your transcripts and other documents must be evaluated, and you will be contacted once an admission decision is made.

If you have any questions, please email: INTOadmissions@slu.edu

6. Offer of Admission

If qualified, we will send you an offer for admission via email.

7. Confirm

Return your signed acceptance form and pay the required deposit as listed on the statement of fees. Once your signed acceptance form and deposit have been received, we will send your I-20 to the shipping address provided.

8. Prepare for Arrival

You will receive a Pre-Departure Guide to help prepare you for living and studying in the US.

Application Checklist for Pathway Programs

Please read carefully and make sure you have included the following documents in your application package:

1. Application form, completed in full (including signature) and checked for accuracy	<input type="checkbox"/>
2. Copy of passport for student (and spouse/dependents, if applicable)	<input type="checkbox"/>
3. Copy of bank statement and Affidavit of Support or letter of sponsorship	<input type="checkbox"/>
4. Copies of high school or university diploma and transcripts (English and native language)	<input type="checkbox"/>
5. Copies of transcripts of all relevant qualifications translated into English as well as in native language	<input type="checkbox"/>
6. Copies of TOEFL/IELTS/PTEA	<input type="checkbox"/>
7. Proof of an adequate alternative insurance policy, if appropriate	<input type="checkbox"/>
8. Copies of visa, I-20 and current DSO information (transfer students)	<input type="checkbox"/>
9. See grids on pages 34-38 for specific program entry requirement materials	<input type="checkbox"/>

Application Checklist for English Program

Please read carefully and make sure you have included the following documents in your application package:

1. Application form, completed in full (including signature) and checked for accuracy	<input type="checkbox"/>
2. Copy of passport for student (and spouse/dependents, if applicable)	<input type="checkbox"/>
3. Copy of bank statement and Affidavit of Support or letter of sponsorship	<input type="checkbox"/>
4. Copies of high school or university diploma and transcripts (English and native language)	<input type="checkbox"/>
5. Copies of transcripts of all relevant qualifications translated into English as well as in native language	<input type="checkbox"/>
6. Proof of an adequate alternative insurance policy, if appropriate	<input type="checkbox"/>
7. Copies of visa, I-20 and current DSO information (transfer students)	<input type="checkbox"/>

INTO SLU Application Form 1 of 3

Please print legibly and complete all relevant sections of this form (including signature) in black ink.
Submit your application and required documents to: INTOadmissions@slu.edu

If an education counselor is assisting you with your application, fill out the details below. If not, leave this section blank and go to Section 1.

Company/Organization: _____ URN Number: _____

Section 1

A. Student Details

Please enter all names exactly as they appear on your passport.

Last/Family Name _____

First/Given Name _____

Middle Names _____

Gender M F

Date of Birth ____/____/____ mm/dd/yyyy

B. Visa and Immigration Information

Country of Birth _____

Country of Nationality/Citizenship _____

US Residency Status (including dual citizenship)

Non-US Citizen or Non-resident Permanent Resident US Citizen

Are you currently living or studying in the United States? Yes No

If YES, please include a copy of your visa, I-20 and your DSO.

Will any of your dependents (spouse/children) come to the US with you?

Yes No How many? _____

If yes, please include copies of their passports with your application.

C. Student Permanent Home Country Address

This is the student permanent home country address, it is required for creating the I-20. This address CANNOT be the address of the Education Counselor.

Street _____

City _____ State/Province _____

Country _____ Postal Code _____

Telephone _____

Student Email _____

D. Shipping Address

This is where the I-20 will be mailed.

Education Counselor/Contact Name _____

Street _____

City _____ State/Province _____

Country _____ Postal Code _____

Telephone _____

Contact Email _____

Section 2

English Language Program Academic English

Please select your intended start date.

August 2016 January 2017 May 2017

Section 3

Academic Programs A. Undergraduate Pathway Programs

Select one Pathway program and one start date below.

	Fall: Aug 2016	Spring: Jan 2017
Aerospace Engineering	<input type="checkbox"/>	<input type="checkbox"/>
Arts	<input type="checkbox"/>	<input type="checkbox"/>
Business	<input type="checkbox"/>	<input type="checkbox"/>
Computer Science	<input type="checkbox"/>	<input type="checkbox"/>
Engineering	<input type="checkbox"/>	<input type="checkbox"/>
General Studies	<input type="checkbox"/>	<input type="checkbox"/>
Health Information Management	<input type="checkbox"/>	<input type="checkbox"/>
Mathematics and Statistics	<input type="checkbox"/>	<input type="checkbox"/>
Science	<input type="checkbox"/>	<input type="checkbox"/>

Planned Academic Subject/Major: _____

B. Graduate Pathway Programs*

Please select only one box below.

	Fall: Aug 2016	Spring: Jan 2017
College of Arts and Sciences		
Bioinformatics and Computational Biology	<input type="checkbox"/>	
Parks College of Engineering, Aviation and Technology		
Engineering	<input type="checkbox"/>	<input type="checkbox"/>
John Cook School of Business		
Applied Financial Economics	<input type="checkbox"/>	<input type="checkbox"/>
Business Administration (MBA)	<input type="checkbox"/>	<input type="checkbox"/>
Supply Chain Management	<input type="checkbox"/>	<input type="checkbox"/>
School of Law		
Law - LLM	<input type="checkbox"/>	<input type="checkbox"/>
Law - Juris Doctor	<input type="checkbox"/>	
Center for Outcomes Research		
Health Data Science	<input type="checkbox"/>	<input type="checkbox"/>
Center for Sustainability		
Sustainability	<input type="checkbox"/>	
Urban Planning and Development	<input type="checkbox"/>	

*See grids on pages 34-38 for specific program entry requirement materials



INTO SLU Application Form 2 of 3

Section 4

Student Education History

Please list **ALL** secondary and post-secondary schools, colleges or universities you have attended or will attend prior to entering the university, including current studies.

You must provide a transcript from each post-secondary school, college or university you have attended, even if you did not complete a term.

A. Secondary Schools/High Schools

Most recent secondary school attended:

School Name _____

Country _____

Start ____/____/____ mm/yyyy End ____/____/____ mm/yyyy

School Name _____

Country _____

Start ____/____/____ mm/yyyy End ____/____/____ mm/yyyy

If you have more secondary schools, please submit them in this format on a separate sheet of paper and include with your application.

B. Colleges and Universities

Most recent post-secondary school attended:

College/University Name _____

Country _____

Start ____/____/____ mm/yyyy End ____/____/____ mm/yyyy

College/University Name _____

Country _____

Start ____/____/____ mm/yyyy End ____/____/____ mm/yyyy

College/University Name _____

Country _____

Start ____/____/____ mm/yyyy End ____/____/____ mm/yyyy

If you have more colleges, universities or post-secondary schools, please submit them in this format on a separate sheet of paper and include with your application.

C. Gaps in Study

Will it be more than four (4) months between the time you completed study at your most recent educational institution, and the start of your program at INTO SLU?

Yes No

If yes, will you have attended a school, college or university in that time?

Yes No

Is that school or university indicated on this application or a separate sheet of paper?

Yes No

Section 5

Test Scores

Please indicate all test scores completed. Copies of test results may be used for evaluation, but official results must be received prior to registration.

A. English Language Test Scores

Language scores are valid for two years after the test date and will be considered expired if over two years old at the time of program start date.

TOEFL IELTS PTEA

I do not plan on taking an English language requirement test.

B. Academic Test Scores (scores are valid for 5 years)

Undergraduate Students

SAT ACT

Graduate Students

GMAT GRE

I do not plan on taking an academic test.

Section 6

A. Housing

Undergraduate Pathway Students and Academic English Students also applying for an Undergraduate Pathway

Students are required to live in on-campus housing during their first four semesters and will be placed into on-campus double room accommodations for the length of their program.

Academic English and Graduate Pathway Students

Students may choose to live in on-campus housing during their study and will be placed into on-campus double room accommodations.

Please indicate the number of semesters you would like housing: 1 2 3

Meal Plan Memberships

Please note that your housing selection will include a meal plan. If you are not living in on-campus housing, you will have the option to purchase a meal plan when you arrive.

INTO SLU Application Form 3 of 3

Section 7

Declarations: Required of all students

Academic Disciplinary Action

Are you currently, or have you ever been, charged with or subject to disciplinary action for scholastic (such as plagiarism or cheating) or any other type of behavioral misconduct at any educational institution? You do not need to disclose academic dismissal, suspension or probation for poor grades. Yes No

Legal Violation

Have you ever been charged with a violation of the law, misdemeanor and/or felony (even if adjudication was withheld) that resulted in, or, if still pending could result in, probation, community service, restitution, a jail sentence or the revocation or suspension of your driver's license (you are not required to include traffic violations that only resulted in a fine)? Yes No

If your answer to any of the preceding is YES, details of any offenses should be included on a separate sheet. If your records have been expunged pursuant to applicable law, you are not required to answer YES to these questions. If you are unsure whether to answer "yes", we strongly suggest that you answer YES and fully disclose all incidents. By doing so, you can avoid any risk of disciplinary action or revocation of your offer of admission.

Payment of Fees

I agree to pay all tuition, accommodation and any other fees incurred as they become due according to the Terms and Conditions four weeks prior to program start date.

Submission of Information

I certify that the information given in this application is complete and accurate, and I understand that to make false or fraudulent statements within this application or residence statement may result in disciplinary action, denial of admission and invalidation of credits or degrees earned. If admitted, I hereby agree to abide by the policies of the Missouri Board of Governors and the rules and regulations of the Saint Louis University. Should any of the information I have given change prior to my enrollment at the institution, I shall immediately notify the INTO SLU Office of Admission.

I confirm that I have included information on all of my academic studies and will not pursue further study prior to joining this university. Failure to provide this information can result in dismissal from the university.

Authorization for Release of Information

I understand that this application is for admission to the Saint Louis University (SLU) and is valid only for the term indicated. I also understand and agree that I will be bound by SLU's regulations concerning application deadline dates and admission requirements.

I agree to the release of any secondary or post-secondary transcripts and related credentials to the Saint Louis University; furthermore, I authorize SLU to contact any secondary and/or post-secondary institution that I have attended for the purposes of confirming receipt of the official records needed to complete my application and discussing any subsequent admission or scholarship decision.

I agree that SLU and INTO Saint Louis University (to the extent it may be covered by FERPA) may release my student record as necessary to facilitate admissions, enrollment and continued progress through any academic program at SLU or INTO SLU. This authorization specifically permits the sharing of information between SLU and INTO SLU, or to any other entity directly responsible for my recruitment or continued participation in the INTO SLU program.

I also authorize my application and application materials for any INTO SLU program to be considered and reviewed by other INTO University Partnerships Ltd. joint ventures in the United States in the case that my application to INTO SLU is unsuccessful.

Medical Insurance

The university requires all full-time students to be covered by health insurance which meets the Saint Louis University requirements. Students unable to provide evidence of adequate alternative coverage at the time of their application will automatically be enrolled in the Saint Louis University health insurance plan. Information may be found at: aetnastudenthealth.com/slu

Terms and Conditions

I state that I have read and understood the INTO SLU brochure and agree to abide by the 2016-17 Terms and Conditions found online: intohigher.com/slu/terms

Signed

Date ____/____/____ mm/dd/yyyy

(Student)

Student's Name

(Please Print)

Students under 18

All students under the age of 18 must have all applications and contracts signed by a parent/guardian or sponsor. In addition, a parental consent form will be required.

Signed

Date ____/____/____ mm/dd/yyyy

(Parent/Guardian/Sponsor - if student is under 18)

Parent/Guardian/Sponsor name

(Please Print)



A brighter future for just \$25

We're delighted you are considering INTO Saint Louis University for your education and look forward to helping you get started on your path to success.

But did you know there are 57 million children globally not enrolled in school?

Parents everywhere share a desire to give their children the best possible start in life but, sadly, a basic education is still beyond the reach of many young people around the world.

As part of our commitment to learning, we created INTO Giving, a charity that helps improve both access to and quality of education for young people living in difficult circumstances.

When children go to school and learn, they create opportunities that transform and empower their lives and their communities.

Donate \$25 today and help provide the education they deserve.

Every penny of your gift will go straight to the INTO Giving educational projects. Making a gift is easy, simply visit our secure website: www.into-giving.com.

Help transform lives by supporting our educational projects around the world.

INTO 

GIVING

INTO Saint Louis University

Affidavit of Support



I, _____ hereby certify that I am willing
 (Print name of family member/personal sponsor)

and able to provide the amount of \$ _____ in US dollars to meet the expenses incurred
 by _____
 (Print student's full name)

during the length of the student's study to which their application pertains.

My relationship to the student is that of: _____. I have authorized the release of my
 supporting financial documents to verify that the promised financial resources are available to me. I affirm that I
 know and understand the contents of this affidavit signed by me and that the statements are true and correct.

Required:

Signature of family member/personal sponsor: _____ Date: _____

Declaration of Finances
US immigration law requires the University to verify that any student seeking an F-1 Visa has sufficient funds to finance their studies for the duration of their program.

If it is determined that you are admissible to INTO Saint Louis University, we will provide you with an I-20 (F-1) certificate of eligibility document only after you submit satisfactory evidence that you have adequate funds for your proposed program of study. Acceptable financial documents must not have been issued more than six (6) months before the date you intend to enroll at INTO Saint Louis University and must accompany this form.

Additional Support Needed for Dependents

If you have a spouse or children that will accompany you to the United States, you must include a minimum of an additional \$5,000 per year for your spouse and \$5,000 per year for each additional dependent. Please note that this estimate for dependents is the minimum amount you must show. If purchasing insurance in the US for dependents, actual costs for your dependents will likely increase.

Certification of Financial Support	
Example Sources of Funding and Required Documentation. All amounts must be in United States currency or show applicable conversion rate.	
Source of Funding	Required Documentation
Personal bank statement (checking/savings)	Certified bank letter/bank statement
Parent(s)/sponsor(s)	Affidavit of Support (attached) and certified bank letter/bank statement
Government agency (home country)	Letter of award
Graduate assistantship/fellowship	Letter of award (copy)

Estimated costs of attendance for the 2016-17 academic year - minimums needed for immigration (I-20 purposes)					
Cost Description	Academic English (1 Semester)	Academic English (2 Semesters)	Academic English (3 Semesters)	Undergraduate Pathway (2 Semesters)	Graduate Pathway (2 Semesters)
Tuition and Fees	\$7,400	\$14,800	\$22,200	\$40,500	\$32,960
Housing and Meals	\$7,040	\$14,080	\$21,120	\$14,080	\$15,020
Books	\$600	\$1,200	\$1,800	\$1,200	\$1,200
Health Insurance	\$1,122	\$2,244	\$3,366	\$2,244	\$2,244
Other	\$2,235	\$4,470	\$6,705	\$4,470	\$4,470
Total	\$18,397	\$36,794	\$55,191	\$62,494	\$55,894

Country Scales - Undergraduate Pathway and Direct Entry

Country	Recommended High School GPA
GCSE/IGCSE	5 subjects with grades of C or better. Subjects must include Math, English, Science and 2 electives.
GCSE/IGCSE A-Levels	GCE/IGCSE Advanced Level - 2 subjects with grades of C or better, and meet the GCSE or GCE O Level requirements.
IB Diploma	Average grades of 5 or higher (1-7) unless high school reports different grade conversion.
Azerbaijan	Senior High School Graduation Diploma with an average of 4.0 on a 5.0 point scale.
Bahrain	Secondary School Leaving Certificate or General Certificate of Secondary Education with an average of 60 out of 100.
Bangladesh	Secondary School Certificate & Higher Secondary Certificate result cards issued by Board of Intermediate & Secondary Education, with average of 45 out of 100.
Belize	Caribbean Examinations Council (CXC) Secondary Education Certificate (showing at least five subjects passed with grades of I or II at General Proficiency Level).
Brazil	Certificado de Conclusao de Segundo Grau with an average 7.0 out of 10 or 70 out of 100.
Cameroon	GCSE O Level with 5 grades of C or better. Or Baccalaureat de L'Enseignement Secondaire with average of 12 out of 20.
Canada	Each Province is different.
China	Senior High School Graduation Diploma or Upper Middle School Graduation Certificate - Transcripts from grades 9-12 with an average of 80 out of 100.
Colombia	Completion of Secondary Education - Bachiller with an average of 7.5 on a 10 point scale.
Cyprus	Apolytirio Lykeiou (School Leaving Certificate - Greek) or Lise Diploması (Turkish) with an average of 16 out of 20 (Southern Cyprus) or 7 out of 10 (Northern Cyprus).
Ecuador	Secondary School Diploma - Bachillerato with an average of 8 on a 10 point scale (Buena/Good).
Germany	Zeugnis der Allgemeinen Hochschulreife/Zeugnis der Fachhochschulreife with an average of 2 out of 6 (grade 1 is high) or 10 out of 15 (grade 15 high).
Ghana	Senior Secondary School Certificate Exam with minimum of 5 subjects and average of 3 where 1 is high. Subjects must include English, Math and Science.
Hong Kong	HKDSE with 4 Core subjects (Math, English, Science and Liberal Science) with score of 4 or higher and 1 elective with a 3 or higher.
India	Secondary School Certificate (SSC) and Higher Secondary School Cert (HSC) with an average of 60% out of 100%.
Indonesia	SMA or STTB with Grades for Years 9-12 and an average of 7 on a 10 point scale or 70 out of 100.
Iran	Completion of the Diplom-Metevaseh (Certificate of Completion of Secondary Education) with an average of 14 on a 20 point scale.
Italy	Diploma di Maturita/Diploma di Perito indicating all exams taken, with an 8 out of 10.
Japan	Upper Secondary School Leaving Certificate (grades 9-12) with an average of 3.0 on a 4.0 scale or 4.0 on a 5.0 point scale.
Jordan	General Secondary Education Certificate (Tawjihi) with an average of 70 out of 100.
Kazakhstan	Senior High School Graduation Diploma - Attestation of Complete Secondary Education with an average of 4 (Good) on a scale of 5.0.
Kenya	Kenya Certificate of Secondary Education. 8 subjects with an average of 8.0 on a 12 point scale.
Kuwait	General Secondary Education Certificate with a 80 out of 100.
Kyrgyzstan	General Certificate of Secondary Education with an average of 4 on a 5 point grading scale.
Malaysia	SPM - Require 5 subjects with an average of B or minimum 10 out of 18 points.

Country Scales (continued)

Country	Recommended High School GPA
Morocco	Senior High School Graduation Diploma - Diplome du Baccalaureat, Attestation, General Certificate of Education with an average of 12 on a 20 point scale.
Myanmar	Senior High School Graduation Diploma BESE Matriculation with an Average grade of 50 out of 100 or a 4.0 on a grading scale of of 5.0.
Netherlands	Senior High School Graduation Diploma/Senior General Education Secondary Certificate with transcripts and average of 7.0 on a 10 point scale.
Nigeria	West African School Certificate of Education (WAEC) with 5 subjects and average of 5.0 where 1 is high. Subjects must include English, Math and Science.
Oman	Thanawiya Amma/General Secondary School Certificate with an 80 out of 100.
Pakistan	Secondary School Certificate (SSC) and Higher Secondary School Cert (HSC) with an average of 50 out of 100.
Qatar	Al-Thanawiya Aama Qatari - General Secondary School Certificate with a 70 out of 100.
Russia	Attestat o Srednem (polnom) Obschem Obrazovanii - Certificate of Secondary (Complete) General Education with an average of 4 on a 5 point scale.
Saudi Arabia	Shahadat Al-Marhalat Al-Thanawiyat/General Secondary Education Certificate (GSEC) with a 75 out of 100.
Singapore	Singapore-Cambridge GCE O Level with 5 subjects and an aggregate score of 30 or less. Subjects must include English, Math and Science.
South Africa	Senior High School Graduation Diploma - Senior Certificate with an average of 60 out of 100 or an average of 4.0 on a 6 point scale.
South Korea	High School Certificate minimum 80% or ranking 4.
Spain	Bachillerato Superior General with an average of 6.0 on a 10 point scale.
Taiwan	Senior High School Diploma with 70 out of 100 or 3.00 GPA on a 4.00 scale.
Tanzania	EAGCE in 5 subjects with grades of C or better and must include English, Math and Science.
Thailand	Certificate of Upper Secondary Education/(Matayom VI) with a 3.0 GPA on a 4.0 scale or 70 out of 100.
The Gambia	Senior Secondary School Certificate (WAEC) 5 subjects with grades of C or better or an aggregate of 15 or less.
Turkey	Lise Diplomas/Secondary Diploma with average of 7.0 on a 10 point scale or 4.0 on a 5 point scale or 70 out of 100.
Ukraine	Certificate of Complete General Secondary Education or Matriculation Certificate (Atestat) with average of 4.0 on a 5 point scale or 7.0 out of 12.
United Arab Emirates	General Secondary Education Diploma with an average of 80 out of 100 or a 3.0 GPA on a 4.0 grading scale.
United Kingdom	GCSE O Level with 5 subjects with grades of C or better. Subjects must include English, Math and Science.
United States of America	High School Diploma with a 3.0 GPA on a 4.0 grading scale.
Uzbekistan	Senior High School Graduation Diploma - Attestat -Certificate of Secondary Education with an average of 4 on a 5 point scale (Good).
Venezuela	Senior High School Graduation Diploma/Bachiller en Ciencias/Humanidades with a 13 on a 20 scale.
Vietnam	Bang Tot Nghiep Pho Thong Trung Hoc (Diploma of completion of Secondary School (Upper) with an average 7.0 on 10 scale or 12 on 20 scale.
Zimbabwe	General Certificate of Education Ordinary Level showing 5 subjects with an average of 4.0 (grade 1 is high). Subjects must include English, Math and Science.

This guide is used for evaluation purposes by the SLU Office of International Services and is supplied here for reference only. Meeting the requirements listed here does not necessarily indicate that a student will qualify for admission to Saint Louis University or INTO Saint Louis University.

When referring to the following guides, be aware that this is not inclusive of all grading requirements. Grading systems and educational structures vary widely around the world and we evaluate each application individually to determine if the applicant meets the standards for success at Saint Louis University.

English Waiver Guidelines

English Waiver Exemptions	SLU Undergraduate Pathway Program - Standard	SLU Undergraduate Direct Entry
IELTS	6	6.5
TOEFL	65	80
PTEA (Pearson)	46	54
US High School	Completes all 4 years of high school in the US with grades of "C" or better in English courses. Must meet domestic freshman admission requirements.	Completes all 4 years of high school in the US with grades of "C" or better in English courses. Must meet domestic freshman admission requirements.
English-Speaking Canadian or American-International High School	English Speaking High School in Canada accepted. International American High School would have to be verified by each individual school.	English Speaking High School in Canada accepted. International American High School would have to be verified by each individual school.
Australia	Yes	Yes
Canada, except Quebec (French)	Yes	Yes
Commonwealth Caribbean (Anglophone), including Antigua, Bahamas, Barbados, Belize, Bermuda, Cayman Islands, Jamaica, Trinidad & Tobago	Yes	Yes
Irish Republic	Yes	Yes
New Zealand	Yes	Yes
Puerto Rico	Yes	Yes
South Africa (If Afrikaans is not native language)	Yes	Yes
United Kingdom (England, Scotland, Ireland, Wales)	Yes	Yes

Dates, Tuition and Fees

Saint Louis University

Rates are an estimate and subject to change. All prices in US dollars.

By Academic Year There are two main semesters per academic year (Fall, Spring), each about 16 weeks long with a shorter Summer semester of 10 weeks.

Saint Louis University Tuition and Fees The following prices are based on 2015-16 Cost of Attendance values and are subject to change.

Cost Description	Tuition and Fees	Housing and Meals	Books and Supplies	Health Insurance	Other	Total Expenses
Undergraduate Direct Admission (24-36 credits, 12-18 credits per semester)	\$40,403	\$11,359	\$1,200	\$1,908	\$4,470	\$59,340
Graduate Direct Admission (18 credits, 9 credits per semester)*	\$19,920	\$11,398	\$1,200	\$1,908	\$4,470	\$38,896

*Varies by program of study

Start Dates for Saint Louis University

Semester	Start Date	Application Fee*
Fall 2016	August 15, 2016	\$25 Undergraduate/\$55-100 Graduate
Spring 2017	January 12, 2017	\$25 Undergraduate/\$55-100 Graduate
Summer 2017	May 24, 2017	\$25 Undergraduate/\$55-100 Graduate

*No undergraduate application fee when completed online. Graduate application fees vary by program.

Estimated Costs

Saint Louis University and INTO SLU Programs

Rates are an estimate and subject to change. All prices in US dollars. Please visit intohigher.com/slu/costs for more information.

Estimated Costs of Attendance for 2016-17

Cost Description	Tuition and Fees	Housing and Meals	Books and Supplies	Health Insurance	Other	Total Expenses
Undergraduate Direct Admission (2 Semesters)	\$40,403	\$11,359	\$1,200	\$1,908	\$4,470	\$59,340
Undergraduate Pathway (2 Semesters)	\$40,500	\$14,080	\$1,200	\$2,244	\$4,470	\$62,494
Graduate Direct Admission (2 Semesters)	\$19,920	\$11,398	\$1,200	\$1,908	\$4,470	\$38,896
Graduate Pathway (2 Semesters)	\$32,960	\$15,020	\$1,200	\$2,244	\$4,470	\$55,894
Academic English (1 Semester)	\$7,400	\$7,040	\$600	\$1,122	\$2,235	\$18,397

Dates, Tuition and Fees

INTO Saint Louis University

Rates are an estimate and subject to change. All prices in US dollars.

By Academic Year There are two main semesters per academic year (Fall, Spring), each about 16 weeks long with a shorter Summer semester of 10 weeks.

Tuition for Academic Programs	
Program	2 Semesters (Standard Pathway)
Undergraduate Pathway Program	\$40,500
Graduate Pathway Program	\$32,960

Tuition for Language Programs			
Program	1 Semester	2 Semesters	3 Semesters
Academic English	\$7,400	\$14,800	\$22,200

Housing and Dining Services			
Housing and dining rates are subject to change. INTO SLU attempts to fulfill room type.			
Program	Fall 2016	Spring 2017	Summer 2017
Double Room	\$7,040	\$6,870	\$5,860

All on-campus housing options include break periods between semesters if a student is attending the following semester. Housing options for graduate students will vary.

Miscellaneous Fees and Expenses 2016-17		
	One Time	Per Academic Term
International Express Mail	\$100	-----
INTO Insurance (Estimated)	-----	\$1,122
Books (Estimated)	-----	\$600

Deposits		
Program	Tuition	Housing
Academic English	\$2,000	\$2,000
Pathway Program	\$2,000	\$2,000
Academic English + Pathway	\$2,000	\$2,000

Insurance for entire length of program must be paid in full at time of deposit and is required for confirmation and I-20 generation.

INTO Saint Louis University Scholarships

INTO Saint Louis University scholarships are available for exceptional INTO Saint Louis University Pathway students. Qualifications and amounts vary between regions. For more information on scholarships in your area, please contact your local education counselor or INTO representative.

INTO Saint Louis University Dates

All dates are tentative and subject to change to align with Saint Louis University's academic calendar.

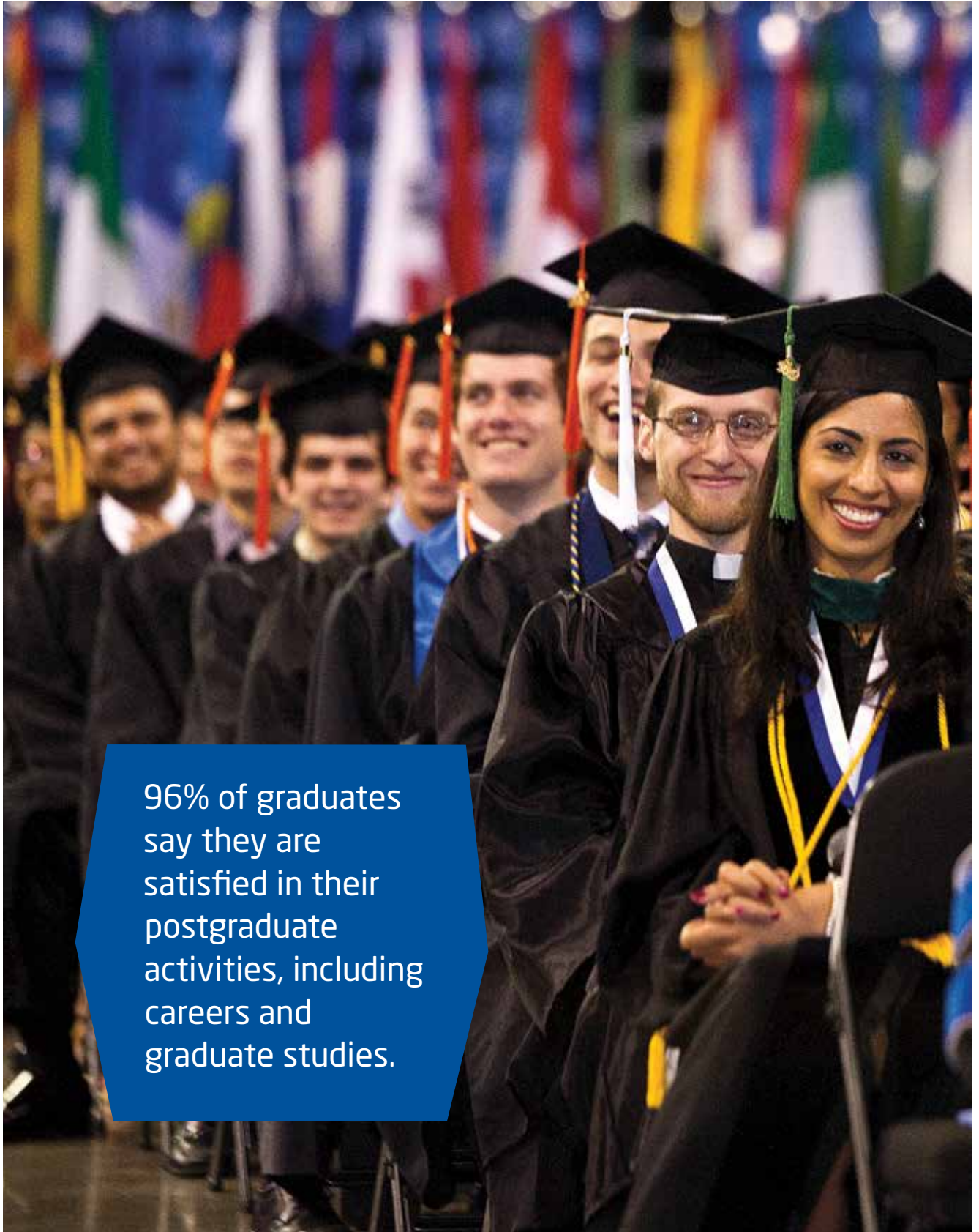
Start Dates for Academic Programs		
Standard Pathway programs are two semesters. All Pathway programs can be started in the semester indicated below.		
Program	Fall 2016 Aug 15, 2016 - Dec 13, 2016	Spring 2017 Jan 12, 2017 - May 16, 2017

Undergraduate Pathway Programs		
Aerospace Engineering, Arts, Business, Computer Science, Engineering, General Studies, Health Information Management, Mathematics and Statistics, Science	⊙	⊙
Graduate Pathway Programs		
Applied Financial Economics, Business Administration (MBA), Engineering, Health Data Science, Law (LLM), Supply Chain Management	⊙	⊙
Bioinformatics and Computational Biology, Law (JD), Sustainability, Urban Planning and Development	⊙	

Start Dates for Academic English			
	Fall 2016 Aug 15, 2016 - Dec 13, 2016	Spring 2017 Jan 12, 2017 - May 16, 2017	Summer 2017 May 24, 2017 - Aug 4, 2017
Academic English	✓	✓	✓

⊙ Standard Pathway program ✓ Variable program length

Graduate Success



96% of graduates say they are satisfied in their postgraduate activities, including careers and graduate studies.



**SAINT LOUIS
UNIVERSITY™**

Want to Find Out More?

If you would like to find out more about any of our programs or services, please visit our website. You can also contact us via email or phone, or visit one of our education counselors in your home country.

Inquiries and Applications

INTO Saint Louis University
1 North Grand Blvd.
DuBourg Hall, Room 102
St. Louis, MO 63103
USA

T: +1 314 977 3926
E: INTOadmissions@slu.edu
W: slu.edu/admission

 [intohigher.com/
slu](http://intohigher.com/slu)

 [facebook.com/
INTOslu](https://facebook.com/INTOslu)

 [twitter.com/
INTOslu](https://twitter.com/INTOslu)

 [myin.to/
SLUYouTube](https://myin.to/SLUYouTube)

 [instagram.com/
INTOslu](https://instagram.com/INTOslu)

INTO 

Through innovative partnerships with leading universities, we expand opportunities for higher education, ensuring success and transforming the lives of our students and staff.

Education Counselor's Stamp

2016-17

MTS ONLINE SURVEY