

# Guide for International Students 2016-17



Top 100

Master's Universities

#17

Top Public Regional  
Universities, South



### Marshall University

- 7 Huntington, West Virginia
- 9 Marshall University
- 10 Marshall Academic Programs
- 12 Marshall Colleges
- 15 INTO Marshall University

### Undergraduate

- 18 Undergraduate Direct Entry
- 20 Undergraduate Pathway Programs

### Graduate

- 30 Graduate Direct Entry
- 32 Graduate Pathway Programs

### English Language

- 46 Academic English
- 47 General English

### Student Life

- 51 Academic Resources
- 53 University Services
- 55 INTO Marshall Student Services
- 57 Sports and Recreation
- 58 Housing
- 61 Dining
- 63 Internships and Working
- 65 Alumni and Parents

### Your Application

- 68 Application Process
- 69 INTO Marshall Application
- 73 Affidavit of Support
- 74 Country Scales
- 75 English Waiver Guidelines
- 77 Dates, Tuition and Fees



\$23M

in research grants (2014)

At Marshall University, we change lives and inspire extraordinary futures.

Marshall University is one of West Virginia's oldest public institutions of higher education and its second-largest. The institution was named after US Supreme Court Justice John Marshall and founded as Marshall Academy in 1837. It was designated Marshall College in 1858 and attained university status in 1961.

Our students attach high value to our small class sizes, having faculty members actively instructing in the classroom, the availability of intensive advising, exceptional student success resources, modern facilities, a growing global community and robust extracurricular programming.

We have nearly 13,500 students from 48 states and more than 56 countries. Beyond the classroom, our students participate in 230 recognized student organizations, providing a broad spectrum of extramural opportunities.

Our faculty members are leaders, mentors and cultivators of talent. They are making real-life differences for our students, many of whom arrive here with enormous potential but lack a reliable roadmap for academic accomplishment.

In addition to Marshall's strong traditional liberal arts and biosciences programs, newly developed programs in digital forensics, pharmacy, physical therapy and public health have created new centers of excellence. The Joan C. Edwards School of Medicine and its relationship with two extremely effective medical centers make Marshall a regional leader in rural health.

Our alumni are the heart and soul of the Marshall family. They have gone on to lead Fortune 500 companies, win Pulitzer Prizes and become captains of industry, science, education and the arts.



"Marshall University is made up of a caring community of students, faculty, staff, alumni and neighbors who are committed to the success of our students. I am proud to be a part of this family as an alumnus and as interim president. I invite you to become part of our Marshall family as you begin your global educational adventure."

Gary G. White  
Interim President  
Marshall University



More than 1,000 faculty members  
dedicated to student success

"Marshall is completely diverse and provided me a good course curriculum. I am glad to be a student here because INTO provided me great skills to prepare for every step of my education. I know I have improved a lot since studying here."

Akhil Bandari, India  
Computer Science

Average class size  
is 21 students



82%

of Marshall's faculty  
hold a PhD or terminal  
degree in their fields

# Marshall University



#1

Forensic science  
program in the US  
(*American Board of  
Criminalistics 2015*)



55+

Countries represented



▲ A vibrant downtown shopping, dining and entertainment district is just a few blocks from campus.



▲ West Virginia offers a variety of outdoor activities.



Huntington's Ritter Park was named among the Best Public Spaces in America by the American Planning Association



▲ Huntington is located along the banks of the Ohio River.

Amazon.com and Toyota are just two of several global corporations that call the Huntington area home

# Huntington, West Virginia

Huntington is located along the Ohio River in the tri-state region of West Virginia, Ohio and Kentucky. Students have the opportunity to explore the beauty that West Virginia has to offer, as well as travel to many of the most popular destinations in the US.

## Small Towns, Friendly People, Big Adventures

The residents of West Virginia and Huntington are renowned for their hospitality and how they embrace Marshall students. The university is the center of activity for the region's cultural and sports activities. The annual International Festival in downtown Huntington, sponsored by Marshall, is one of the city's favorite and most colorful special events.

Huntington also has a vibrant downtown shopping, dining and entertainment district, anchored by Marshall's new Visual Arts Center, which is just a short walk from Marshall's main campus. Students who love the outdoors enjoy many kilometers of walking and biking trails, public parks and paths along the Ohio River. The picturesque Ritter Park is a favorite leisure destination for students, while Harris Riverfront Park and Pullman Square are popular spots for outdoor concerts and festivals.

## Living in West Virginia

West Virginia offers a relaxed lifestyle, world-class health care, modern schools and friendly, welcoming communities.

Although Huntington is only a few hours' drive from major east coast cities, West Virginia is still mostly rural with uncrowded roadways and a low crime rate. The cost of living is, on average, lower than the rest of the US.

## An Outdoor Recreation Paradise

West Virginia's mountains, forests, rivers and wildlife provide plenty of opportunities for adventure, with dozens of square kilometers of public recreation areas, parks and forests, more than 1,200 kilometers of hiking trails and 20 million square meters of fishing waters. Marshall is less than two hours from some of America's best whitewater rafting, rock climbing and mountain biking.

## Industry in West Virginia

Major industries located in West Virginia include:

- Data centers and technology
- Biotechnology and forensics
- Automotive
- Aerospace
- Energy
- Metals
- Tourism
- Wood products
- Chemicals and polymers

Companies that call the Huntington area home include:

- Alcon Research
- Amazon.com
- Cabell Huntington Hospital
- Special Metals Corporation
- St. Mary's Medical Center
- Steel of West Virginia
- Toyota
- US Army Corps of Engineers



Just over 1 hour from New York and Washington, DC, by plane



For more information, visit:  
[intohigher.com/marshall](http://intohigher.com/marshall)

# Marshall At-a-Glance

**Founded:** 1837

**Enrollment:** 13,390

**International Students:** 556

**Countries Represented:** 55+

**Bachelor's Degrees:** 55

**Master's/PhD Degrees:** 59

**Campus Size:** 100 acres

**Research:** \$31 million

**Faculty:** 771 full-time, 298 part-time



▼ The INTO Marshall Center is centrally located on Marshall's campus.



## \$300M

Invested in new buildings and renovations  
in the last 10 years to give students modern,  
state-of-the-art facilities





# Marshall University

The agreement between Marshall University and INTO Marshall University has enhanced the global profile of Marshall and substantially increased international student enrollment.

## Marshall University

Founded in 1837, Marshall University was named after the fourth Chief Justice of the US Supreme Court, John Marshall. In its almost 180 years of existence, Marshall has become a leading public university providing innovative undergraduate and graduate education in 200 academic fields of study in 10 colleges. Marshall offers more than 50 undergraduate and 59 graduate and doctoral programs, including the MD, PharmD and DPT. Marshall has an operating budget of \$279 million, generating \$31 million in research funding and \$1.5 billion in economic impact each year.

Marshall University is big enough to offer the expansive opportunities of a large university, while being small enough to care about each student.

## The Center for International Programs

The Center for International Programs supports international students' transition to living and studying in the United States. Its programs range from immigration and administrative to social and cultural. Some of the most popular services include hosting the International Tables, where students learn more about different cultures, and the International Student Organization. Perhaps the most well-known international event at Marshall is the annual International Festival, where international students have the opportunity to proudly share their own cultures with their new-found friends from the university and the entire Huntington community.

## INTO Marshall University

INTO Marshall offers academic Pathway programs, English language training and personalized support tailored to international students' educational, social and cultural needs, preparing students to progress with confidence to a university degree program. To find out more about INTO Marshall, please see page 15.

## Support for International Students

The Center for International Programs and INTO Marshall work together to offer a variety of programs, services and facilities that provide international students with an unrivaled study experience.

## Paths to Marshall for International Students

### Direct Entry

Students who meet the specified language and academic criteria may apply directly to Marshall University. Students who do not meet these requirements are encouraged to apply to INTO Marshall's Pathway and English language programs.

### INTO Marshall Pathway Programs

INTO Marshall's Undergraduate and Graduate Pathway programs are ideal for international students who may need additional English language and academic preparation before continuing to a degree program at a US university.

### INTO Marshall English Language Program

INTO Marshall's English language programs can help students at all levels acquire the English language skills for university study at Marshall and attain academic, professional and personal goals.

# 46%

of classes at Marshall have fewer than 20 students

# Marshall Academic Programs

	BACHELOR'S	MASTER'S	DOCTORATE
<b>College of Arts and Media</b>			
Advertising	⊙		
Allied Arts	⊙		
Art [Bachelor's areas of emphasis: Art and Design, Art History]	⊙		
Broadcast Journalism	⊙		
Journalism		•	
Music	⊙		
Music [Bachelor's areas of emphasis: Interdisciplinary Music Studies, Jazz Studies, Performance, Theory and Composition; Master's areas of emphasis: Music Composition, Music Education, Music History/Literature, Music Performance]	⊙	•	
Online Journalism	⊙		
Print Journalism	⊙		
Public Relations	⊙		
Radio and Television Production and Management	⊙		
Sports Journalism	⊙		
Theatre	⊙		
Theatre [Bachelor's areas of emphasis: Performance, Production]	⊙		
Visual Arts [Bachelor's areas of emphasis: Ceramics, Fibers, Graphic Design, Painting, Photography, Printmaking, Sculpture]	⊙		
<b>College of Business</b>			
<b>Accountancy</b>		⊙	
Accounting	⊙		
<b>Business Administration (MBA)</b>		⊙	
Economics [Bachelor's area of emphasis: International Economics]	⊙		
Energy Management	⊙		
Finance	⊙		
<b>Health Care Administration</b>		⊙	
<b>Human Resource Management</b>		⊙	
International Business	⊙		
Management [Bachelor's area of emphasis: Health Care Management]	⊙		
Management Information Systems	⊙		
Management Practice in Nurse Anesthesia			•
Marketing	⊙		

	BACHELOR'S	MASTER'S	DOCTORATE
<b>College of Education and Professional Development</b>			
Adult and Technical Education		•	
Counseling		•	
Curriculum and Instruction			•
Early Childhood Education	⊙	•	
Educational Leadership			•
Elementary Education	⊙	•	
Leadership Studies		•	
Literacy Education		•	
Master of Arts in Teaching		•	
Secondary Education	⊙	•	
Special Education		•	
<b>College of Health Professions</b>			
Athletic Training [Bachelor's areas of emphasis: Comprehensive, Health Communication, Occupational Safety and Health, Pre-Chiropractic, Pre-Medicine, Pre-Physical Therapy, Pre-Physician's Assistant, Safety]		⊙	
Biomechanics [Bachelor's areas of emphasis: Pre-Physical Therapy, Physics, Pre-Medicine, Safety]	⊙	•	
Communication Disorders	⊙	•	
Cytotechnology	⊙		
Dietetics	⊙	•	
<b>Exercise Science</b> [Bachelor's areas of emphasis: Applied Exercise Physiology, Clinical Exercise Physiology; Master's area of emphasis: Integrative Physiology]	⊙	⊙	
Health Informatics	⊙	•	
Health Sciences	⊙		
Medical Imaging	⊙		
Medical Laboratory Science	⊙		
Nursing	⊙	•	
Physical Therapy			•
Public Health	⊙	•	
Respiratory Care	⊙		
Social Work	⊙	•	
<b>Sport Administration</b> [Master's areas of emphasis: Sport Management, Recreation and Physical Activity]		⊙	
Sport Management and Marketing	⊙		



“Over the past year, Academic English and Pathway programs at INTO Marshall have helped me to build a strong academic background. INTO Marshall University provides opportunities and helps me improve myself every day.”

Shuo Xu, China  
Academic English/Graduate Pathway, English with TESOL Emphasis

- ⦿ A Pathway program can lead to this degree and this Marshall degree is available through direct entry.
- This Marshall University degree program is available through direct entry.

Undergraduate Pathway programs may lead to any bachelor's degree listed below.

Graduate Pathway programs leading to master's degrees are listed below in green.

	BACHELOR'S	MASTER'S	DOCTORATE		BACHELOR'S	MASTER'S	DOCTORATE
<b>College of Information Technology and Engineering</b>				<b>College of Science</b>			
<b>Computer Science</b>	⦿	⦿		Applied Mathematics	⦿		
Engineering [Bachelor's area of emphasis: Civil]	⦿			Biochemistry	⦿		
<b>Engineering Management</b>		⦿		Biological Sciences [Bachelor's areas of emphasis: Cellular, Molecular and Medical Biology; Ecology and Evolutionary Biology; Microbiology; Natural History and Conservation; Plant Biology; Master's areas of emphasis: Organismal, Evolutionary and Ecological Biology, Watershed Resource Sciences]	⦿	●	
<b>Environmental Engineering</b>		⦿		Biotechnology	⦿		
<b>Environmental Science</b>		⦿		Chemistry	⦿		
<b>Information Systems</b>		⦿		Chemistry (ACS Certified)	⦿		
<b>Mechanical Engineering</b>	⦿	⦿		Computer and Information Technology [Bachelor's areas of emphasis: Computer Forensics, Computer Application Development, Game Development, Web Application Development]	⦿		
<b>Safety</b> [Master's areas of emphasis: Mine Safety, Occupational Safety and Health]		⦿		Criminal Justice	⦿	●	
Safety Technology	⦿			Digital Forensics and Information Assurance	⦿		
<b>Technology Management</b> [Master's areas of emphasis: Environmental Management, Information Security, Information Technology, Manufacturing Systems, Pharmacy, Transport Systems and Technology]		⦿		Environmental Chemistry	⦿		
<b>Transportation and Infrastructure Engineering</b>		⦿		Environmental Science [Bachelor's area of emphasis: Transportation Technology]	⦿		
<b>College of Liberal Arts</b>				<b>School of Medicine</b>			
Anthropology	⦿			Forensic Chemistry	⦿		
Communication Studies [Bachelor's areas of emphasis: Health Communication, Interpersonal Communication, Organizational Communication, Public Communication]	⦿	●		Geology [Bachelor's areas of emphasis: Engineering Geology, Environmental Geoscience]	⦿		
Economics	⦿			Integrated Science and Technology [Bachelor's area of emphasis: Environmental Assessment and Policy]	⦿		
English	⦿	●		<b>Mathematics</b> [Master's area of emphasis: Statistics]	⦿	⦿	
English - Creative Writing	⦿			Natural Resources and Recreation Management	⦿		
English - Literary Studies	⦿			Physical and Applied Sciences [Master's areas of emphasis: Chemistry, Geobiophysical Modeling, Geology, Mathematics, Physics and Physical Science]		●	
<b>English</b> [Master's area of emphasis: TESOL: Teaching English to Speakers of Other Languages]		⦿		Physics [Bachelor's areas of emphasis: Applied Physics, Bio Physics, Medical Physics]	⦿		
French	⦿			Statistics	⦿	●	
Geography [Bachelor's area of emphasis: Meteorology, Weather Broadcasting]	⦿	●		<b>School of Pharmacy</b>			
German	⦿			Pharmacy			●
History	⦿	●					
Humanities [Bachelor's areas of emphasis: Classics, Philosophy and Religious Studies]	⦿	●					
International Affairs	⦿						
Japanese	⦿						
Latin	⦿	●					
Political Science	⦿	●					
Psychology	⦿	●	●				
Sociology	⦿	●					
Spanish	⦿						

# College of Business

## About the College

The College of Business offers undergraduate and graduate degrees. Small class sizes allow interaction among professors and students, as well as individual career advising.

## Research

Dedicated faculty members conduct research with high academic standards. Faculty regularly present their work at conferences and publish in professional and academic journals. The COB is proud to have a number of faculty award winners recognized for their excellence in research both nationally and internationally.

## Real-world Experience

In addition to traditional learning situations, classes rely on more experiential learning methods, such as analyzing and presenting cases, participating competitively in simulations, helping real clients solve business problems, helping to develop marketing plans, internships, faculty-led programs in foreign countries and visits to area businesses.

## Key Program Facts

### Accreditations and Rankings

- Association to Advance Collegiate Schools of Business (AACSB) accreditation
- #219 Best Undergraduate Business program in the US (*U.S. News & World Report 2015*)

### Degrees

#### Undergraduate

- Accounting
- Economics
- Energy Management
- Finance
- International Business
- Management
- Management Information Systems
- Marketing

#### Graduate

- Accountancy
- Business Administration
- Health Care Administration
- Human Resource Management

### Alumni

- Brad Smith - President and CEO of Intuit
- F. Selby Wellman - Senior VP of CISCO Systems
- Harvey White - Founder of Qualcomm
- Verna L. Gibson - Former CEO of The Limited

[marshall.edu/cob](http://marshall.edu/cob)

# College of Information Technology and Engineering

## About the College

The College of Information Technology and Engineering programs, such as computer science, engineering and safety technology, provide students with small classes taught by faculty with extensive experience in teaching, research and industrial settings.

## Research

CITE students work alongside faculty on research projects that provide them with valuable learning experiences and make a positive difference in the lives of others. From intelligent transportation systems that increase safety and travel efficiency, to computer vision and image processing that help those with visual impairments, CITE research is changing the world.

## Real-world Experience

CITE students receive hands-on instruction through classroom and lab experiences. They also participate in university research initiatives, capstone projects and internships throughout the calendar year.

## Key Program Facts

### Accreditations and Rankings

- Engineering and Safety Technology programs accredited by ABET, the Accreditation Board for Engineering and Technology
- #104 Best Undergraduate Engineering program in the US (*U.S. News & World Report 2015*)

### Degrees

#### Undergraduate

- Computer Science
- Engineering
- Mechanical Engineering
- Safety Technology

#### Graduate

- Computer Science
- Engineering
- Environmental Science
- Information Systems
- Mechanical Engineering
- Safety
- Technology Management

### Facilities

- Arthur Weisberg Family Applied Engineering Complex, a new, world-class facility with more than 13,100-square meters of classrooms, laboratories and offices.

### Alumni

- CITE alumni work at IBM, international oil and coal corporations, JP Morgan Chase, construction companies, the US Army Corps of Engineers, Toyota and engineering design firms.

[marshall.edu/cite](http://marshall.edu/cite)

# Other Colleges



## College of Arts and Media [marshall.edu/cam](http://marshall.edu/cam)

The College of Arts and Media is home to the School of Art and Design, the School of Journalism and Mass Communications, the School of Music and Theatre, Birke Art Gallery, musical and theater student groups, the student newspaper *The Parthenon* and the student radio station WMUL-FM. CAM enriches Marshall's campus and the Huntington community with many performances, exhibitions, broadcasts, publications, lectures and special presentations.



## College of Education and Professional Development [marshall.edu/coepd](http://marshall.edu/coepd)

The College of Education and Professional Development is one of the oldest academic units within Marshall University and it continues to prepare teachers and other educational professionals. Offering majors in early childhood, elementary and secondary education, and certifications in a wide range of academic areas, the college offers students many ways in which they can prepare to inspire a new generation of young learners.



## College of Health Professions [marshall.edu/cohp](http://marshall.edu/cohp)

The College of Health Professions prepares students to become highly competent, collaborative and socially responsible health care professionals in a dynamic health care environment.

### School of Physical Therapy

Within the College of Health Professions, the School of Physical Therapy trains students to become health care professionals who diagnose and treat clients of varying ages and health care needs.



## College of Liberal Arts [marshall.edu/cola](http://marshall.edu/cola)

The College of Liberal Arts seeks to preserve, transmit, interpret and create knowledge in an environment of free inquiry and expression. COLA courses form the core of the undergraduate curriculum for all Marshall University students so they learn to think critically and imaginatively, communicate effectively and understand various dimensions of human experience.



## College of Science [marshall.edu/cos](http://marshall.edu/cos)

The College of Science provides a solid foundation in many fields of science, while offering small class sizes and excellent facilities. Students receive instruction in a learning environment that encourages competency in written and oral communication along with the ability to work in groups. Special emphasis is placed on experiential learning such as undergraduate research and internships.



## School of Medicine [musom.marshall.edu](http://musom.marshall.edu)

The Joan C. Edwards School of Medicine provides students with a high-quality, hands-on medical education delivered in an atmosphere of caring and respect. The school has expanded its scope of research and clinical services, giving students an energized learning environment in which to become physicians. The graduate Forensic Science program is ranked number one in the US, according to the American Board of Criminalistics.



## School of Pharmacy [marshall.edu/pharmacy](http://marshall.edu/pharmacy)

The School of Pharmacy prepares students to become skilled health care professionals. The curriculum emphasizes providing high standards of care and the discovery of new knowledge, both of which help ensure optimal medication therapy outcomes. The school is recognized by the Accreditation Council for Pharmacy Education.



## Honors College [marshall.edu/honors](http://marshall.edu/honors)

The Honors College fosters academic excellence in a community of 600 students by enhancing their undergraduate education. Talented faculty provide students with innovative teaching and learning, an engaging interdisciplinary curriculum, and creative and critical inquiry. The Honors College also provides diverse leadership and service opportunities.



▲ The INTO Marshall welcome desk is a valuable resource for our students.

“We Are...Marshall. Marshall graduates are transformed as students and scholars. Challenging academics, small class sizes and vibrant campus traditions give international students the true American college experience, where they will reach their highest potential. YOU Are...Marshall.”

Eric Martinez-Fry  
Center Director  
INTO Marshall University



91%

of students would encourage others to apply to INTO Marshall University

# INTO Marshall University

INTO Marshall University offers international students the opportunity to study on an American college campus with a variety of programs geared toward improving English skills and helping students begin their journey to a US university degree.

## Welcome to INTO Marshall

At INTO Marshall, international students join a supportive community committed to helping them integrate with ease into American university life while preparing for degree studies. Unique programs help improve academic and English language skills, and helpful faculty and staff ensure students adjust to life in the US.

Students studying in the INTO Marshall Center have all the benefits of campus life at an American university. Living and learning in the heart of Marshall's Huntington campus, international students develop friendships with American and international students and have access to all of the academic, social and cultural resources and activities at Marshall University.

## The INTO Marshall Advantage

- Take the first steps toward earning a US university degree at one of America's leading regional research institutions.
- Study on a safe and friendly campus that offers more than 200 clubs and activities.
- Live, learn and have fun with students from all across the US and around the globe.
- Enjoy full access to all university resources, services and facilities.
- Learn in small classes taught by highly qualified university instructors.
- Earn academic credits that apply toward Marshall University degree programs.
- Progress to a Marshall University degree program upon successful completion of a Pathway program.

## Pathway Programs

INTO Marshall offers academic Pathway programs designed to prepare students to progress with confidence to Marshall University undergraduate and graduate degree programs. Learn more about Pathway programs on pages 20-42.

## English Language Program

Students can choose from a range of English language programs to help meet their academic, professional and personal goals. Classroom instruction is combined with opportunities to engage with other domestic and international students outside the classroom. Learn more about English language programs on pages 46-47.

## State-of-the-art Facilities

INTO Marshall provides the best learning environment for successful students to invest in their education. Highly qualified instructors, facilities with the latest technology, small classes, personalized support, social activities and a welcoming community all contribute to the rich campus experience at Marshall University.

## Center Facilities Include:

- Wireless internet throughout the center
- Learning resource center with study materials, books, DVDs and periodicals
- Computer lab
- Multi-purpose classrooms
- Lounge areas for teacher-student meetings, study groups and relaxing
- 24-hour emergency assistance
- Smaller classes that allow for maximum student-teacher interaction
- Close proximity to all campus classrooms, residence halls, recreational facilities and restaurants/dining halls

## Key Center Facts

### Programs Offered

#### Undergraduate Pathway Programs

- Business Administration (page 23)
- Computer Science (page 23)
- Engineering (page 24)
- General (page 24)
- Integrated Science and Technology (page 25)
- Safety Technology (page 26)
- Science (page 27)
- Visual Arts (page 27)

#### Graduate Pathway Programs

##### Business

- Accountancy (page 35)
- Business Administration (page 36)
- Health Care Administration (page 39)
- Human Resource Management (page 39)

##### Health Professions

- Exercise Science (page 38)
- Sport Administration (page 42)

##### Information Technology and Engineering

- Computer Science (page 36)
- Engineering (page 37)
- Environmental Science (page 38)
- Information Systems (page 40)
- Mechanical Engineering (page 34)
- Safety (page 41)
- Technology Management (page 42)

##### Liberal Arts

- English- TESOL (page 37)

##### Science

- Mathematics (page 41)

#### English Language Program

- Academic English (page 46)
- General English (page 47)

[intohigher.com/marshall](http://intohigher.com/marshall)

85% of students were satisfied with all aspects of their experience



A degree from Marshall doesn't just prepare students for careers—it prepares them for life. Students develop a well-rounded set of critical thinking, communication and problem-solving skills, take classes in a variety of subjects, and learn with hands-on, real-life application.

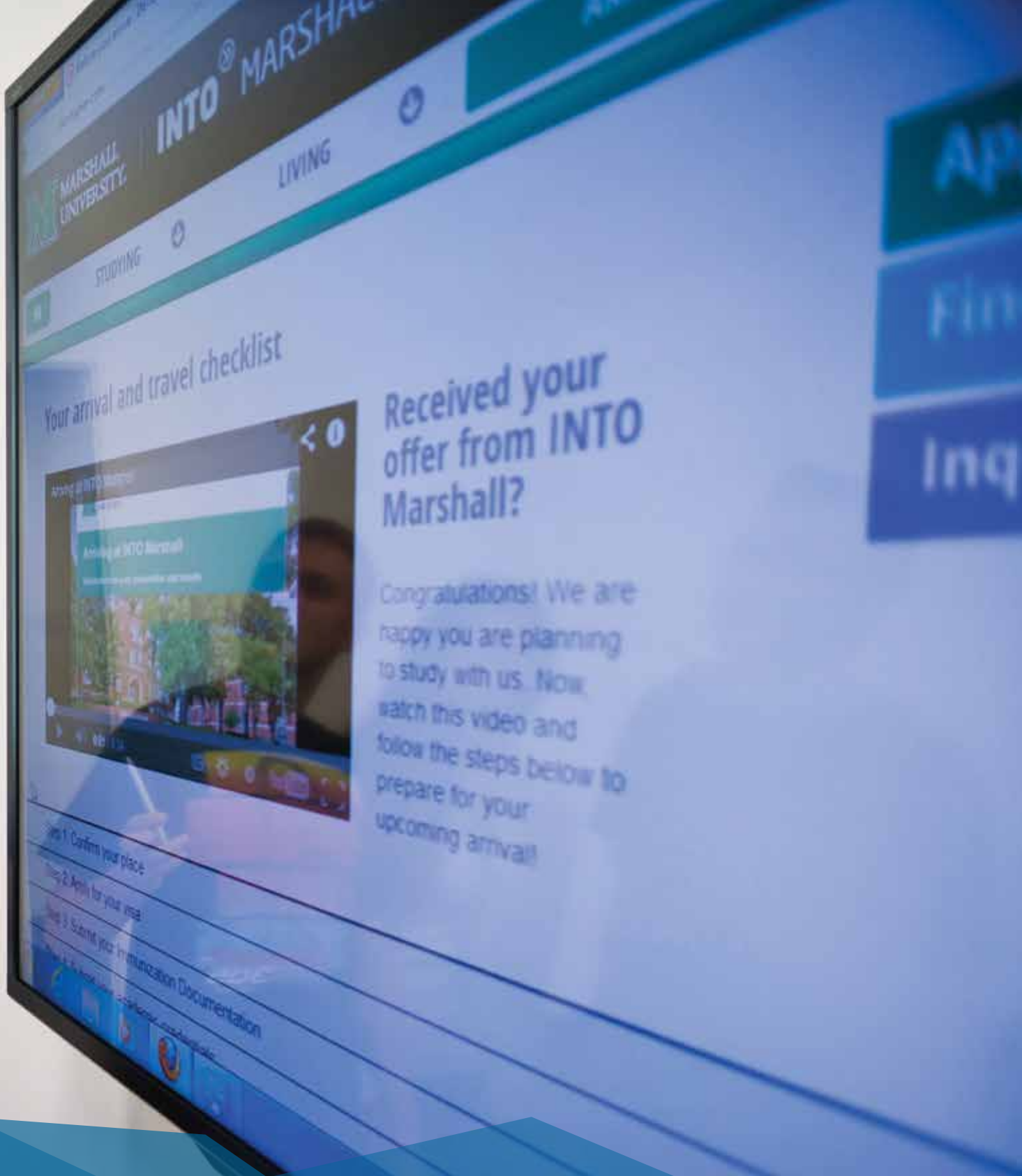


#104

Best Undergraduate Engineering Program  
(U.S. News & World Report 2015)

# Undergraduate





# Top 50

Best institutions to study game design  
(The Princeton Review)



# \$61,700

Mid-career salary level of Marshall Alumni

# Undergraduate Direct Entry

Undergraduate education at Marshall means getting a bachelor's degree, which is typically a four-year program. Marshall offers a variety of bachelor's degrees, from arts and sciences to business and engineering.

## 1. Meet Admission Requirements

Visit Marshall University's website to review the admission requirements for your degree program. Ensure you meet all academic and language requirements for admission.

- Successful completion of secondary/high school diploma
- 2.5 or higher GPA on a US 4.0 scale
- SAT or ACT may be required for some programs
- To meet the English language requirement, credentials proving English proficiency must be received. These items may include, but are not limited to:
  - TOEFL iBT 78 **or**
  - IELTS 6.0 **or**
  - Successful completion of Academic English Level 6 with no grades below C
- For more information on proving English proficiency, visit: [marshall.edu/admissions/international/undergraduate-international-admission/apply-for-international-undergraduate-study](http://marshall.edu/admissions/international/undergraduate-international-admission/apply-for-international-undergraduate-study)

## Start Dates for Marshall University Degree Programs\*

Semester	First Day of Classes	Undergraduate Application Deadline	Application Fee
Fall 2016	August 22, 2016	June 15, 2016	\$150
Spring 2017	January 9, 2017	October 15, 2016	\$150
Summer 2017	May 15, 2017	March 15, 2017	\$150

\* All start dates are approximate and subject to change. Final dates will be announced at least six months prior to start date.

## 2. Understand Admissions

The undergraduate admission process involves an initial review of your application and supporting documents to ensure that the application is complete. The completed application and supporting materials are then evaluated to determine admissibility to the program you have selected and an admission decision is made.

For detailed admissions information, visit: [marshall.edu/admissions/international/undergraduate-international-admission](http://marshall.edu/admissions/international/undergraduate-international-admission)

## 3. Submit Your Application

- Apply online or download the application and fill out all required fields
- The application requires a \$150 non-refundable application fee paid by check, money order or credit card
- An additional \$50 evaluation fee also is required for all transfer applicants
- [marshall.edu/admissions/apply](http://marshall.edu/admissions/apply)



**Academic and English Testing Score Codes for Marshall University**

<b>SAT: 5396</b>	<b>TOEFL: 5396</b>	<b>ACT: 4526</b>	<b>IELTS: DIRECT</b>
------------------	--------------------	------------------	----------------------

**4. Provide Required Documents**

- Official secondary and university transcripts, diplomas and other required credentials must be mailed directly to the Marshall University Admissions Office from the registrar or equivalent officer at your secondary school or university in order to be considered official.
- Transcripts, diplomas and other required credentials must be submitted in the original language, accompanied by an official English translation, from the issuing institution. Transcripts must contain all secondary, college or university academic credits, grades and documentation of degrees earned.
- For applicants whose first language is not English or applicants who hold an earned secondary or bachelor's degree from a non-English institution, English language proficiency credentials must be received.
- Submit a copy of your passport with your admission application.

All official admission credentials should be sent directly to the Marshall University Admissions Office in a sealed and stamped envelope:

**Marshall University**

Admissions Office  
102 Old Main  
One John Marshall Dr.  
Huntington, West Virginia 25755  
USA

**T: +1 800 642 3499**

**E: [international@marshall.edu](mailto:international@marshall.edu)**

**5. Finalize Your Plans**

If admitted, you will receive a letter of acceptance and an I-20 form. The I-20 form is used to apply for a student visa (F-1) at an American Embassy or Consulate. Marshall will also send a housing application and a form you can complete to notify the university of your arrival.

Submit proof of Measles, Mumps, Rubella (MMR) immunization and all required immunizations and screenings during first semester of enrollment at Marshall University.

Additional pre-departure and orientation information is available at:

[marshall.edu/cip/newstudentchecklist](http://marshall.edu/cip/newstudentchecklist)

**Third-party Authorization**

If a family member or educational counselor is assisting with the completion of your application and you would like for Marshall to communicate with them regarding your application, please contact the Marshall University Admissions office at [admissions@marshall.edu](mailto:admissions@marshall.edu) or 1-800-642-3499.

**Key Program Facts****Start Dates\***

- Fall: August 22, 2016
- Spring: January 9, 2017
- Summer: May 15, 2017

\* All start dates are approximate and subject to change. Final dates will be announced at least six months prior to start date.

**Application Deadlines**

- Fall: June 15, 2016
- Spring: October 15, 2016
- Summer: March 15, 2017

**Academic Entry Requirements**

- Satisfactory completion of a secondary/high school diploma with an overall GPA of 2.5 on a US 4.0 scale
- SAT or ACT may be required for some programs.
- The degree program you select may have additional requirements with which you must comply.
- Transfer students please visit: [marshall.edu/admissions/transfer/transfer-students](http://marshall.edu/admissions/transfer/transfer-students) for entry requirements.

**Note:** Meeting the minimum admission requirements does not guarantee admission to specific programs.

**English Language Entry Requirement**

- TOEFL iBT 78 or
- IELTS 6.0 or
- Successful completion of Academic English Level 6 with no grades below C

**Housing Requirement**

- All undergraduate students are required to live in on-campus housing for their first two years.

[marshall.edu/admissions](http://marshall.edu/admissions)

▼ Campus libraries offer countless resources for students to research and study.



# Undergraduate Pathway Programs

Students who enroll in an Undergraduate Pathway program at INTO Marshall University will receive one or two semesters of Academic English instruction taught by Marshall faculty alongside courses toward their degree at Marshall University.

### Understand the Pathway Program

INTO Marshall's Undergraduate Pathway program combines intensive language study, academic skills development and academic coursework in a program designed to move students successfully through the first year of their four-year degree program of study in the US.

### Decide if the Program is Right for You

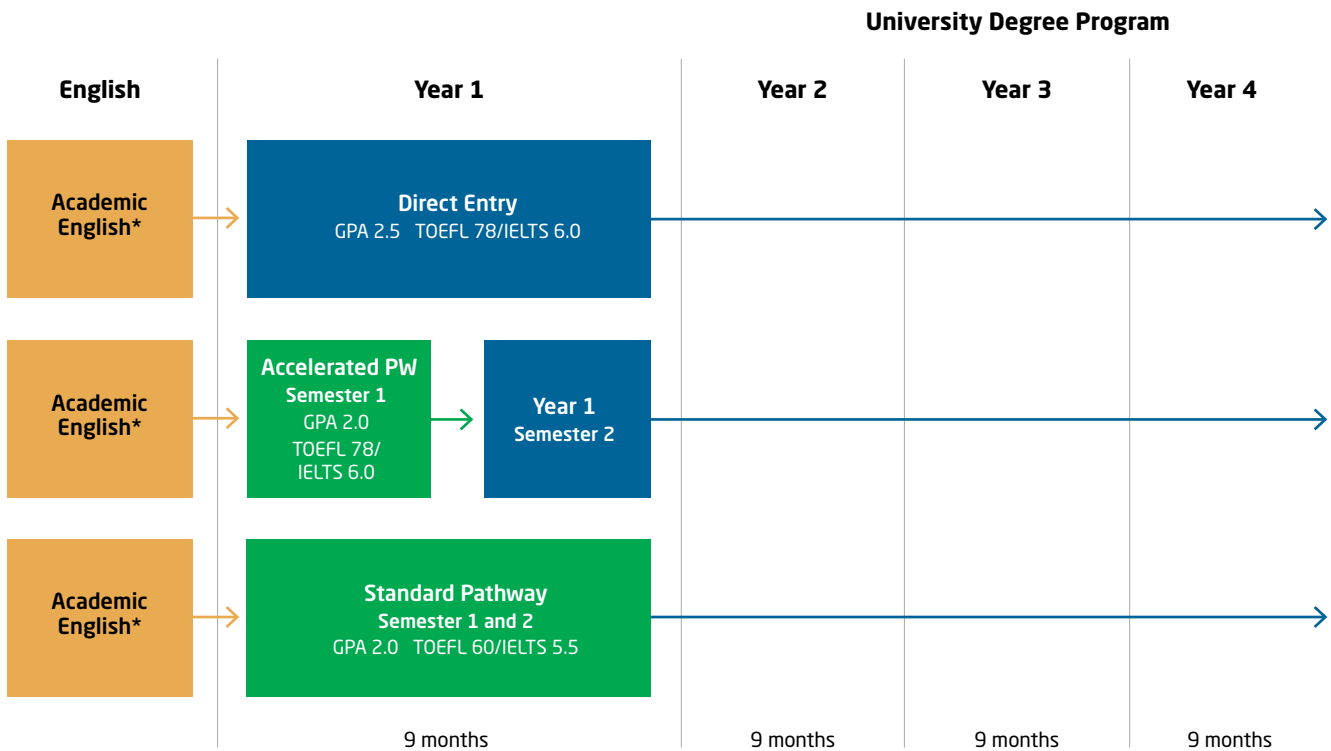
The Undergraduate Pathway program is for students who:

- Want to study for an undergraduate degree in the US
- Desire additional academic, language and cultural support in order to succeed during the first year at a US university
- May need to improve English language skills
- May have a lower GPA than required for direct admission to degree program
- Meet any or all of the above criteria

### Fully Integrated University Experience

In addition to intensive English instruction, Pathway students take core academic courses including math, science, writing and other courses required of all students, domestic and international. All Undergraduate Pathway courses are Marshall University credit-bearing courses.

Undergraduate Pathway programs are available in the fall, spring and summer semesters. Some programs will require taking courses in the summer in order to complete the degree in four years. Programs such as engineering may require a fifth year to complete a bachelor's degree.



\*The length of your Academic English program before Pathway depends on your level of English.

### Program Benefits

Pathway students receive the highest level of support during their transition abroad, making the program an ideal choice for international students who are driven to achieve high academic goals.

Other benefits include:

- Guaranteed progression to a Marshall University program (upon successful completion of a Pathway program)
- Full integration with domestic and international students on the Marshall campus
- Access to all Marshall cultural events, athletic events and activities including Marshall's state-of-the-art recreation center
- Classrooms and accommodations in the heart of Marshall's compact and accessible campus with shopping, dining and other services located nearby
- Highest level of support for student success
- Individual supplemental tutoring
- Highly trained and experienced university instructors
- Academic advising throughout the program

### Prepare for Success

At the end of the first year, Pathway students should be able to:

- Communicate effectively in written and spoken English
- Interact fully with professors and fellow students in a US classroom setting
- Understand research, reference and citation standards for American academic papers
- Use on-campus technology including computer hardware and software
- Read, comprehend and critically evaluate academic texts and problems
- Take useful and accurate notes in academic lectures

### Key Program Facts

#### Undergraduate Pathway Programs

- Business Administration (page 23)
- Computer Science (page 23)
- Engineering (page 24)
- General (page 24)
- Integrated Science and Technology (page 25)
- Safety Technology (page 26)
- Science (page 27)
- Visual Arts (page 27)

#### Start Dates\*

- Fall: August 17, 2016
- Spring: January 5, 2017
- Summer: May 11, 2017

\* All start dates are approximate and subject to change. Final dates will be announced at least six months prior to start date. Students must arrive at least one day prior to the start dates.

#### Program Duration

- Standard Pathway programs are two semesters (9 months)
- Accelerated Pathway programs are one semester (4 months)

#### Entry Requirements - Standard Pathway (2 Semesters)

- Satisfactory completion of a secondary/high school diploma with a GPA of 2.0 or higher
- TOEFL iBT 60 **or**
- IELTS 5.5 (5.0 minimum subscores) **or**
- Password Overall Level 6 **or**
- PTEA 44 **or**
- Successful completion of Academic English Level 4 with no grades below C at that level

#### Entry Requirements - Accelerated Pathway (1 Semester)

- Satisfactory completion of a secondary/high school diploma with a GPA of 2.0 or higher
- TOEFL 78 iBT **or**
- IELTS 6.0 **or**
- Successful completion of Academic English Level 6 with no grades below C at that level

#### Housing Requirements

- All Undergraduate Pathway students are required to live in university housing for their first two years.

#### Progression Requirements

- Minimum 2.0 GPA in Pathway
- No I grades in any class
- C or better in all classes
- See Progression charts and requirements on pages 22-27

#### Program Notes

- Students using Password and PTEA as proof of English level will take an English placement test upon arrival. Students scoring below the required entry standard for their Pathway will be placed in Academic English.
- Academic undergraduate courses in the Pathway may be substituted with other academic undergraduate courses depending on availability. Any course substitution will count toward the degree.
- Students enrolled in a Summer Pathway may be required to take fewer courses, with total credit hours not less than 12.



# Progression Routes to Marshall

Progression to the following undergraduate degrees may be granted upon successful completion of an Undergraduate Pathway program.

## Business

- Accounting
- Economics
- Energy Management
- Finance
- International Business
- Management
- Management Information Systems
- Marketing

## Computer Science

- Computer Science

## Engineering

- Engineering, Civil emphasis
- Engineering, Mechanical emphasis

## General

- Advertising
- Anthropology
- Broadcast Journalism
- Communication Studies
- Early Childhood Education\*
- Economics
- Elementary Education\*
- English
- French
- Geography
- German
- History
- Humanities

## General (continued)

- International Affairs
- Japanese
- Journalism
- Latin
- Modern Languages
- Music\*
- Online Journalism
- Political Science
- Print Journalism
- Psychology
- Public Relations
- Radio and Television Production and Management
- Secondary Education\*
- Sociology
- Spanish
- Sports Journalism
- Theatre

## Integrated Science and Technology

- Biotechnology
- Computer and Information Technology
- Criminal Justice
- Digital Forensics and Information Assurance
- Integrated Science and Technology
- Natural Resources and Recreation Management
- Safety Technology

## Science

- Applied Mathematics
- Biochemistry
- Biological Sciences
- Biology
- Biomechanics\*
- Chemistry
- Communication Disorders\*
- Dietetics\*
- Environmental Chemistry
- Environmental Science
- Exercise Science\*
- Forensic Chemistry
- Geology
- Health Sciences
- Mathematics
- Medical Imaging\*
- Microbiology
- Nursing\*
- Physics
- Public Health
- Respiratory Care\*
- Social Work
- Sport Management and Marketing
- Statistics

## Visual Arts

- Visual Arts

\*These majors may have additional entry requirements.



# Undergraduate Pathway Programs

Business Administration																																									
<b>Standard Pathway - 2 Semesters</b> Fall: August 17, 2016 Spring: January 5, 2017 Summer: May 11, 2017	<b>Degree Program Components</b> 120 credit hour program 28 credit hours apply from Pathway 92 credit hours remaining toward degree	<b>Program Information</b>																																							
<b>Entry Requirements</b> <ul style="list-style-type: none"> <li>High school diploma with 2.0 GPA</li> <li>Language requirement:               <ul style="list-style-type: none"> <li>TOEFL iBT 60 <b>or</b></li> <li>IELTS 5.5 (5.0 minimum subscores) <b>or</b></li> <li>Password Overall Level 6 <b>or</b></li> <li>PTEA 44 <b>or</b></li> </ul> </li> <li>Completion of Academic English Level 4 with no grades below C</li> </ul>	<table border="1"> <thead> <tr> <th>Semester 1</th> <th>Course Title</th> <th>Credit Hours</th> </tr> </thead> <tbody> <tr> <td>ENG 150</td> <td>Academic Listening and Speaking</td> <td>3</td> </tr> <tr> <td>ENG 151</td> <td>Academic Reading</td> <td>3</td> </tr> <tr> <td>UNI 100</td> <td>Freshman First Class</td> <td>1</td> </tr> <tr> <td>MGT 100</td> <td>Introduction to Business</td> <td>3</td> </tr> <tr> <td>MTH 130*</td> <td>College Algebra</td> <td>3</td> </tr> <tr> <td colspan="2" style="text-align: right;"><b>Total</b></td> <td><b>13</b></td> </tr> </tbody> </table> <table border="1"> <thead> <tr> <th>Semester 2</th> <th>Course Title</th> <th>Credit Hours</th> </tr> </thead> <tbody> <tr> <td>ENG 160</td> <td>Academic English and Composition</td> <td>6</td> </tr> <tr> <td>CMM 207</td> <td>Business and Professional Communication</td> <td>3</td> </tr> <tr> <td>MIS 200</td> <td>Business Computer Applications</td> <td>3</td> </tr> <tr> <td>FYS 100</td> <td>First-Year Seminar</td> <td>3</td> </tr> <tr> <td colspan="2" style="text-align: right;"><b>Total</b></td> <td><b>15</b></td> </tr> </tbody> </table>	Semester 1	Course Title	Credit Hours	ENG 150	Academic Listening and Speaking	3	ENG 151	Academic Reading	3	UNI 100	Freshman First Class	1	MGT 100	Introduction to Business	3	MTH 130*	College Algebra	3	<b>Total</b>		<b>13</b>	Semester 2	Course Title	Credit Hours	ENG 160	Academic English and Composition	6	CMM 207	Business and Professional Communication	3	MIS 200	Business Computer Applications	3	FYS 100	First-Year Seminar	3	<b>Total</b>		<b>15</b>	<b>Progression Requirements</b> <ul style="list-style-type: none"> <li>Minimum of 2.0 GPA in Pathway</li> <li>No I grades in any class</li> <li>Grade of C or better in all classes</li> <li>Student is fully admitted to Marshall provided successful completion of conditional admission criteria at the end of the Pathway and submission of all required admission credentials.</li> </ul> <p><b>Notes</b></p> <p>* Math placement will be determined by the score achieved on a Department of Mathematics placement test.</p> <p><b>These courses are generally delivered through the INTO Marshall Center and are for Pathway students only.</b></p>
Semester 1	Course Title	Credit Hours																																							
ENG 150	Academic Listening and Speaking	3																																							
ENG 151	Academic Reading	3																																							
UNI 100	Freshman First Class	1																																							
MGT 100	Introduction to Business	3																																							
MTH 130*	College Algebra	3																																							
<b>Total</b>		<b>13</b>																																							
Semester 2	Course Title	Credit Hours																																							
ENG 160	Academic English and Composition	6																																							
CMM 207	Business and Professional Communication	3																																							
MIS 200	Business Computer Applications	3																																							
FYS 100	First-Year Seminar	3																																							
<b>Total</b>		<b>15</b>																																							
<b>Accelerated Pathway - 1 Semester</b> Fall: August 17, 2016 Spring: January 5, 2017 Summer: May 11, 2017	<b>Degree Program Components</b> 120 credit hour program 16 credit hours apply from Pathway 104 credit hours remaining toward degree																																								
<b>Entry Requirements</b> <ul style="list-style-type: none"> <li>High school diploma with 2.0 GPA</li> <li>Language requirement:               <ul style="list-style-type: none"> <li>TOEFL iBT 78 <b>or</b></li> <li>IELTS 6.0 <b>or</b></li> </ul> </li> <li>Completion of Academic English Level 6 with no grades below C</li> </ul>	<table border="1"> <thead> <tr> <th>Semester 1</th> <th>Course Title</th> <th>Credit Hours</th> </tr> </thead> <tbody> <tr> <td>ENG 160</td> <td>Academic English and Composition</td> <td>6</td> </tr> <tr> <td>UNI 100</td> <td>Freshman First Class</td> <td>1</td> </tr> <tr> <td>MGT 100</td> <td>Introduction to Business</td> <td>3</td> </tr> <tr> <td>MIS 200</td> <td>Business Computer Applications</td> <td>3</td> </tr> <tr> <td>MTH 130*</td> <td>College Algebra</td> <td>3</td> </tr> <tr> <td colspan="2" style="text-align: right;"><b>Total</b></td> <td><b>16</b></td> </tr> </tbody> </table>	Semester 1	Course Title	Credit Hours	ENG 160	Academic English and Composition	6	UNI 100	Freshman First Class	1	MGT 100	Introduction to Business	3	MIS 200	Business Computer Applications	3	MTH 130*	College Algebra	3	<b>Total</b>		<b>16</b>																			
Semester 1	Course Title	Credit Hours																																							
ENG 160	Academic English and Composition	6																																							
UNI 100	Freshman First Class	1																																							
MGT 100	Introduction to Business	3																																							
MIS 200	Business Computer Applications	3																																							
MTH 130*	College Algebra	3																																							
<b>Total</b>		<b>16</b>																																							
Computer Science																																									
<b>Standard Pathway - 2 Semesters</b> Fall: August 17, 2016 Spring: January 5, 2017 Summer: May 11, 2017	<b>Degree Program Components</b> 120 credit hour program 31 credit hours apply from Pathway 89 credit hours remaining toward degree	<b>Program Information</b>																																							
<b>Entry Requirements</b> <ul style="list-style-type: none"> <li>High school diploma with 2.0 GPA</li> <li>Language requirement:               <ul style="list-style-type: none"> <li>TOEFL iBT 60 <b>or</b></li> <li>IELTS 5.5 (5.0 minimum subscores) <b>or</b></li> <li>Password Overall Level 6 <b>or</b></li> <li>PTEA 44 <b>or</b></li> </ul> </li> <li>Completion of Academic English Level 4 with no grades below C</li> </ul>	<table border="1"> <thead> <tr> <th>Semester 1</th> <th>Course Title</th> <th>Credit Hours</th> </tr> </thead> <tbody> <tr> <td>ENG 150</td> <td>Academic Listening and Speaking</td> <td>3</td> </tr> <tr> <td>ENG 151</td> <td>Academic Reading</td> <td>3</td> </tr> <tr> <td>UNI 100</td> <td>Freshman First Class</td> <td>1</td> </tr> <tr> <td>MTH 229*</td> <td>Calculus I</td> <td>5</td> </tr> <tr> <td>CS 110</td> <td>Computer Science I</td> <td>3</td> </tr> <tr> <td colspan="2" style="text-align: right;"><b>Total</b></td> <td><b>15</b></td> </tr> </tbody> </table> <table border="1"> <thead> <tr> <th>Semester 2</th> <th>Course Title</th> <th>Credit Hours</th> </tr> </thead> <tbody> <tr> <td>ENG 160</td> <td>Academic English and Composition</td> <td>6</td> </tr> <tr> <td>FYS 100</td> <td>First-Year Seminar</td> <td>3</td> </tr> <tr> <td>MTH 230*</td> <td>Calculus II</td> <td>4</td> </tr> <tr> <td>CS 120</td> <td>Computer Science II</td> <td>3</td> </tr> <tr> <td colspan="2" style="text-align: right;"><b>Total</b></td> <td><b>16</b></td> </tr> </tbody> </table>	Semester 1	Course Title	Credit Hours	ENG 150	Academic Listening and Speaking	3	ENG 151	Academic Reading	3	UNI 100	Freshman First Class	1	MTH 229*	Calculus I	5	CS 110	Computer Science I	3	<b>Total</b>		<b>15</b>	Semester 2	Course Title	Credit Hours	ENG 160	Academic English and Composition	6	FYS 100	First-Year Seminar	3	MTH 230*	Calculus II	4	CS 120	Computer Science II	3	<b>Total</b>		<b>16</b>	<b>Progression Requirements</b> <ul style="list-style-type: none"> <li>Minimum of 2.0 GPA in Pathway</li> <li>No I grades in any class</li> <li>Grade of C or better in all classes</li> <li>Student is fully admitted to Marshall provided successful completion of conditional admission criteria at the end of the Pathway and submission of all required admission credentials.</li> </ul> <p><b>Notes</b></p> <p>* Math placement will be determined by the score achieved on a Department of Mathematics placement test. Students who place below MTH 132 Pre-Calculus will be required to substitute some Pathway courses, which may extend the time necessary to complete the program.</p> <p><b>These courses are generally delivered through the INTO Marshall Center and are for Pathway students only.</b></p>
Semester 1	Course Title	Credit Hours																																							
ENG 150	Academic Listening and Speaking	3																																							
ENG 151	Academic Reading	3																																							
UNI 100	Freshman First Class	1																																							
MTH 229*	Calculus I	5																																							
CS 110	Computer Science I	3																																							
<b>Total</b>		<b>15</b>																																							
Semester 2	Course Title	Credit Hours																																							
ENG 160	Academic English and Composition	6																																							
FYS 100	First-Year Seminar	3																																							
MTH 230*	Calculus II	4																																							
CS 120	Computer Science II	3																																							
<b>Total</b>		<b>16</b>																																							
<b>Accelerated Pathway - 1 Semester</b> Fall: August 17, 2016 Spring: January 5, 2017 Summer: May 11, 2017	<b>Degree Program Components</b> 120 credit hour program 17 credit hours apply from Pathway 103 credit hours remaining toward degree																																								
<b>Entry Requirements</b> <ul style="list-style-type: none"> <li>High school diploma with 2.0 GPA</li> <li>Language requirement:               <ul style="list-style-type: none"> <li>TOEFL iBT 78 <b>or</b></li> <li>IELTS 6.0 <b>or</b></li> </ul> </li> <li>Completion of Academic English Level 6 with no grades below C</li> </ul>	<table border="1"> <thead> <tr> <th>Semester 1</th> <th>Course Title</th> <th>Credit Hours</th> </tr> </thead> <tbody> <tr> <td>ENG 160</td> <td>Academic English and Composition</td> <td>6</td> </tr> <tr> <td>MUS 142/ ART 112/THE 112</td> <td>Music in Society/Intro to Visual Art/ Theater Appreciation</td> <td>3</td> </tr> <tr> <td>MTH 229*</td> <td>Calculus I</td> <td>5</td> </tr> <tr> <td>CS 110</td> <td>Computer Science I</td> <td>3</td> </tr> <tr> <td colspan="2" style="text-align: right;"><b>Total</b></td> <td><b>17</b></td> </tr> </tbody> </table>	Semester 1	Course Title	Credit Hours	ENG 160	Academic English and Composition	6	MUS 142/ ART 112/THE 112	Music in Society/Intro to Visual Art/ Theater Appreciation	3	MTH 229*	Calculus I	5	CS 110	Computer Science I	3	<b>Total</b>		<b>17</b>																						
Semester 1	Course Title	Credit Hours																																							
ENG 160	Academic English and Composition	6																																							
MUS 142/ ART 112/THE 112	Music in Society/Intro to Visual Art/ Theater Appreciation	3																																							
MTH 229*	Calculus I	5																																							
CS 110	Computer Science I	3																																							
<b>Total</b>		<b>17</b>																																							

# Undergraduate Pathway Programs

## General

### Standard Pathway - 2 Semesters

Fall: August 17, 2016  
Spring: January 5, 2017  
Summer: May 11, 2017

### Degree Program Components

120 credit hour program  
31 credit hours apply from Pathway  
89 credit hours remaining toward degree

### Program Information

#### Entry Requirements

- High school diploma with 2.0 GPA
- Language requirement:
  - TOEFL iBT 60 **or**
  - IELTS 5.5 (5.0 minimum subscores) **or**
  - Password Overall Level 6 **or**
  - PTEA 44 **or**
  - Completion of Academic English Level 4 with no grades below C

Semester 1	Course Title	Credit Hours
ENG 150	Academic Listening and Speaking	3
ENG 151	Academic Reading	3
MTH 121*	Concepts & Applications of Math	3
GEO 100	Intro to Human Geography	3
MUS 142/ART 112/THE 112	Music in Society/Intro to Visual Art/Theater Appreciation	3
UNI 100	Freshman First Class	1
<b>Total</b>		<b>16</b>
Semester 2	Course Title	Credit Hours
ENG 160	Academic English and Composition	6
CMM 103	Fundamentals of Speech Communication	3
FYS 100	First-Year Seminar	3
PSC 104	American National Gov't & Politics	3
<b>Total</b>		<b>15</b>

#### Progression Requirements

- Minimum of 2.0 GPA in Pathway
- No I grades in any class
- Grade of C or better in all classes
- Student is fully admitted to Marshall provided successful completion of conditional admission criteria at the end of the Pathway and submission of all required admission credentials.

#### Notes

\* Math placement will be determined by the score achieved on a Department of Mathematics placement test.

**These courses are generally delivered through the INTO Marshall Center and are for Pathway students only.**

### Accelerated Pathway - 1 Semester

Fall: August 17, 2016  
Spring: January 5, 2017  
Summer: May 11, 2017

### Degree Program Components

120 credit hour program  
13 credit hours apply from Pathway  
107 credit hours remaining toward degree

#### Entry Requirements

- High school diploma with 2.0 GPA
- Language requirement:
  - TOEFL iBT 78 **or**
  - IELTS 6.0 **or**
  - Completion of Academic English Level 6 with no grades below C

Semester 1	Course Title	Credit Hours
ENG 160	Academic English and Composition	6
CMM 103	Fundamentals of Speech Communication	3
MTH 121*	Concepts & Applications of Math	3
UNI 100	Freshman First Class	1
<b>Total</b>		<b>13</b>

## Engineering with Civil or Mechanical Engineering Emphasis

### Standard Pathway - 2 Semesters

Fall: August 17, 2016  
Spring: January 5, 2017  
Summer: May 11, 2017

### Degree Program Components

128 credit hour program  
30 credit hours apply from Pathway  
98 credit hours remaining toward degree

### Program Information

#### Entry Requirements

- High school diploma with 2.0 GPA
- Language requirement:
  - TOEFL iBT 60 **or**
  - IELTS 5.5 (5.0 minimum subscores) **or**
  - Password Overall Level 6 **or**
  - PTEA 44 **or**
  - Completion of Academic English Level 4 with no grades below C

Semester 1	Course Title	Credit Hours
ENG 150	Academic Listening and Speaking	3
ENG 151	Academic Reading	3
MTH 229*	Calculus I	5
ENGR 103	Freshman Engineering Seminar	1
ENGR 104	The Engineering Profession	1
UNI 100	Freshman First Class	1
<b>Total</b>		<b>14</b>
Semester 2	Course Title	Credit Hours
ENG 160	Academic English and Composition	6
FYS 100	First-Year Seminar	3
MTH 230*	Calculus II	4
ENGR 111	Engineering Computations	3
<b>Total</b>		<b>16</b>

#### Progression Requirements

- Minimum of 2.0 GPA in Pathway
- No I grades in any class
- Grade of C or better in all classes
- Student is fully admitted to Marshall provided successful completion of conditional admission criteria at the end of the Pathway and submission of all required admission credentials.

#### Notes

In order to graduate from the degree program in four years, summer courses may be required.

\* Math placement will be determined by the score achieved on a Department of Mathematics placement test. Students who place below MTH 132 Pre-Calculus will be required to substitute some Pathway courses, which may extend the time necessary to complete the program.

**These courses are generally delivered through the INTO Marshall Center and are for Pathway students only.**

### Accelerated Pathway - 1 Semester

Fall: August 17, 2016  
Spring: January 5, 2017  
Summer: May 11, 2017

### Degree Program Components

128 credit hour program  
16 credit hours apply from Pathway  
112 credit hours remaining toward degree

#### Entry Requirements

- High school diploma with 2.0 GPA
- Language requirement:
  - TOEFL iBT 78 **or**
  - IELTS 6.0 **or**
  - Completion of Academic English Level 6 with no grades below C

Semester 1	Course Title	Credit Hours
ENG 160	Academic English and Composition	6
MUS 142/ART 112/THE 112	Music in Society/Intro to Visual Art/Theater Appreciation	3
MTH 229*	Calculus I	5
ENGR 103	Freshman Engineering Seminar	1
ENGR 104	The Engineering Profession	1
<b>Total</b>		<b>16</b>



Integrated Science and Technology																																												
<b>Standard Pathway - 2 Semesters</b> Fall: August 17, 2016 Spring: January 5, 2017 Summer: May 11, 2017	<b>Degree Program Components</b> 122 credit hour program 31 credit hours apply from Pathway 91 credit hours remaining toward degree	<b>Program Information</b>																																										
<b>Entry Requirements</b> <ul style="list-style-type: none"> <li>High school diploma with 2.0 GPA</li> <li>Language requirement:                             <ul style="list-style-type: none"> <li>TOEFL iBT 60 <b>or</b></li> <li>IELTS 5.5 (5.0 minimum subscores) <b>or</b></li> <li>Password Overall Level 6 <b>or</b></li> <li>PTEA 44 <b>or</b></li> </ul> </li> <li>Completion of Academic English Level 4 with no grades below C</li> </ul>	<table border="1"> <thead> <tr> <th>Semester 1</th> <th>Course Title</th> <th>Credit Hours</th> </tr> </thead> <tbody> <tr> <td>ENG 150</td> <td>Academic Listening and Speaking</td> <td>3</td> </tr> <tr> <td>ENG 151</td> <td>Academic Reading</td> <td>3</td> </tr> <tr> <td>UNI 100</td> <td>Freshman First Class</td> <td>1</td> </tr> <tr> <td>MUS 142/ART 112/THE 112</td> <td>Music in Society/Intro to Visual Art/Theater Appreciation</td> <td>3</td> </tr> <tr> <td>MTH 140*</td> <td>Applied Calculus</td> <td>3</td> </tr> <tr> <td>GEO 100</td> <td>Intro to Human Geography</td> <td>3</td> </tr> <tr> <td colspan="2" style="text-align: right;"><b>Total</b></td> <td><b>16</b></td> </tr> </tbody> </table> <table border="1"> <thead> <tr> <th>Semester 2</th> <th>Course Title</th> <th>Credit Hours</th> </tr> </thead> <tbody> <tr> <td>ENG 160</td> <td>Academic English and Composition</td> <td>6</td> </tr> <tr> <td>FYS 100</td> <td>First-Year Seminar</td> <td>3</td> </tr> <tr> <td>CMM 103</td> <td>Fundamentals of Speech Communication</td> <td>3</td> </tr> <tr> <td>IST 150</td> <td>Spreadsheet and Database Programming</td> <td>3</td> </tr> <tr> <td colspan="2" style="text-align: right;"><b>Total</b></td> <td><b>15</b></td> </tr> </tbody> </table>	Semester 1	Course Title	Credit Hours	ENG 150	Academic Listening and Speaking	3	ENG 151	Academic Reading	3	UNI 100	Freshman First Class	1	MUS 142/ART 112/THE 112	Music in Society/Intro to Visual Art/Theater Appreciation	3	MTH 140*	Applied Calculus	3	GEO 100	Intro to Human Geography	3	<b>Total</b>		<b>16</b>	Semester 2	Course Title	Credit Hours	ENG 160	Academic English and Composition	6	FYS 100	First-Year Seminar	3	CMM 103	Fundamentals of Speech Communication	3	IST 150	Spreadsheet and Database Programming	3	<b>Total</b>		<b>15</b>	<b>Progression Requirements</b> <ul style="list-style-type: none"> <li>Minimum of 2.0 GPA in Pathway</li> <li>No I grades in any class</li> <li>Grade of C or better in all classes</li> <li>Student is fully admitted to Marshall provided successful completion of conditional admission criteria at the end of the Pathway and submission of all required admission credentials.</li> </ul> <b>Notes</b> <ul style="list-style-type: none"> <li>* Math placement will be determined by the score achieved on a Department of Mathematics placement test.</li> </ul> <p><b>These courses are generally delivered through the INTO Marshall Center and are for Pathway students only.</b></p>
Semester 1	Course Title	Credit Hours																																										
ENG 150	Academic Listening and Speaking	3																																										
ENG 151	Academic Reading	3																																										
UNI 100	Freshman First Class	1																																										
MUS 142/ART 112/THE 112	Music in Society/Intro to Visual Art/Theater Appreciation	3																																										
MTH 140*	Applied Calculus	3																																										
GEO 100	Intro to Human Geography	3																																										
<b>Total</b>		<b>16</b>																																										
Semester 2	Course Title	Credit Hours																																										
ENG 160	Academic English and Composition	6																																										
FYS 100	First-Year Seminar	3																																										
CMM 103	Fundamentals of Speech Communication	3																																										
IST 150	Spreadsheet and Database Programming	3																																										
<b>Total</b>		<b>15</b>																																										
<b>Accelerated Pathway - 1 Semester</b> Fall: August 17, 2016 Spring: January 5, 2017 Summer: May 11, 2017	<b>Degree Program Components</b> 122 credit hour program 13 credit hours apply from Pathway 109 credit hours remaining toward degree																																											
<b>Entry Requirements</b> <ul style="list-style-type: none"> <li>High school diploma with 2.0 GPA</li> <li>Language requirement:                             <ul style="list-style-type: none"> <li>TOEFL iBT 78 <b>or</b></li> <li>IELTS 6.0 <b>or</b></li> </ul> </li> <li>Completion of Academic English Level 6 with no grades below C</li> </ul>	<table border="1"> <thead> <tr> <th>Semester 1</th> <th>Course Title</th> <th>Credit Hours</th> </tr> </thead> <tbody> <tr> <td>ENG 160</td> <td>Academic English and Composition</td> <td>6</td> </tr> <tr> <td>UNI 100</td> <td>Freshman First Class</td> <td>1</td> </tr> <tr> <td>IST 150</td> <td>Spreadsheet and Database Programming</td> <td>3</td> </tr> <tr> <td>CMM 103</td> <td>Fundamentals of Speech Communication</td> <td>3</td> </tr> <tr> <td colspan="2" style="text-align: right;"><b>Total</b></td> <td><b>13</b></td> </tr> </tbody> </table>	Semester 1	Course Title	Credit Hours	ENG 160	Academic English and Composition	6	UNI 100	Freshman First Class	1	IST 150	Spreadsheet and Database Programming	3	CMM 103	Fundamentals of Speech Communication	3	<b>Total</b>		<b>13</b>																									
Semester 1	Course Title	Credit Hours																																										
ENG 160	Academic English and Composition	6																																										
UNI 100	Freshman First Class	1																																										
IST 150	Spreadsheet and Database Programming	3																																										
CMM 103	Fundamentals of Speech Communication	3																																										
<b>Total</b>		<b>13</b>																																										



# Undergraduate Pathway Programs

## Safety Technology

### Standard Pathway - 2 Semesters

Fall: August 17, 2016  
Spring: January 5, 2017  
Summer: May 11, 2017

### Degree Program Components

120 credit hour program  
29 credit hours apply from Pathway  
91 credit hours remaining toward degree

### Program Information

#### Entry Requirements

- High school diploma with 2.0 GPA
- Language requirement:
  - TOEFL iBT 60 **or**
  - IELTS 5.5 (5.0 minimum subscores) **or**
  - Password Overall Level 6 **or**
  - PTEA 44 **or**
  - Completion of Academic English Level 4 with no grades below C

Semester 1	Course Title	Credit Hours
ENG 150	Academic Listening and Speaking	3
ENG 151	Academic Reading	3
UNI 100	Freshman First Class	1
MTH 130*	College Algebra	3
SFT 235	Intro to Safety	3
<b>Total</b>		<b>13</b>

#### Progression Requirements

- Minimum of 2.0 GPA in Pathway
- No I grades in any class
- Grade of C or better in all classes
- Student is fully admitted to Marshall provided successful completion of conditional admission criteria at the end of the Pathway and submission of all required admission credentials.

Semester 2	Course Title	Credit Hours
ENG 160	Academic English and Composition	6
FYS 100	First-Year Seminar	3
PHY 201	General Physics	3
PHY 202	General Physics Lab	1
PSY 201	General Psychology	3
<b>Total</b>		<b>16</b>

#### Notes

\* Math placement will be determined by the score achieved on a Department of Mathematics placement test.

**These courses are generally delivered through the INTO Marshall Center and are for Pathway students only.**

### Accelerated Pathway - 1 Semester

Fall: August 17, 2016  
Spring: January 5, 2017  
Summer: May 11, 2017

### Degree Program Components

120 credit hour program  
13 credit hours apply from Pathway  
107 credit hours remaining toward degree

#### Entry Requirements

- High School diploma with 2.0 GPA
- Language requirement:
  - TOEFL iBT 78 **or**
  - IELTS 6.0 **or**
  - Completion of Academic English Level 6 with no grades below C

Semester 1	Course Title	Credit Hours
ENG 160	Academic English and Composition	6
UNI 100	Freshman First Class	1
MTH 130*	College Algebra	3
SFT 235	Intro to Safety	3
<b>Total</b>		<b>13</b>



Science		
Standard Pathway - 2 Semesters	Degree Program Components	Program Information
Fall: August 17, 2016 Spring: January 5, 2017 Summer: May 11, 2017	120-129 credit hour program 28-30 credit hours apply from Pathway 92-99 credit hours remaining toward degree	

Entry Requirements	Semester 1	Course Title	Credit Hours	Progression Requirements
	<ul style="list-style-type: none"> <li>High school diploma with 2.0 GPA</li> <li>Language requirement:                             <ul style="list-style-type: none"> <li>TOEFL iBT 60 <b>or</b></li> <li>IELTS 5.5 (5.0 minimum subscores) <b>or</b></li> <li>Password Overall Level 6 <b>or</b></li> <li>PTEA 44 <b>or</b></li> </ul> </li> <li>Completion of Academic English Level 4 with no grades below C</li> </ul>	<b>ENG 150</b> <b>ENG 151</b> UNI 100 MUS 142/ART 112/THE 112 MTH 130*	<b>Academic Listening and Speaking</b> <b>Academic Reading</b> Freshman First Class Music in Society/Intro to Visual Art/ Theater Appreciation College Algebra	
	<b>Total</b>		<b>13</b>	
	Semester 2	Course Title	Credit Hours	
	<b>ENG 160</b> FYS 100 MTH* CMM 103	<b>Academic English and Composition</b> First-Year Seminar Variable depending on placement Fundamentals of Speech Communication	<b>6</b> 3 3-5 3	* Math placement will be determined by the score achieved on a Department of Mathematics placement test.  <b>These courses are generally delivered through the INTO Marshall Center and are for Pathway students only.</b>
	<b>Total</b>		<b>15-17</b>	

Accelerated Pathway - 1 Semester	Degree Program Components	Program Information
Fall: August 17, 2016 Spring: January 5, 2017 Summer: May 11, 2017	120-129 credit hour program 13-15 credit hours apply from Pathway 107-114 credit hours remaining toward degree	

Entry Requirements	Semester 1	Course Title	Credit Hours
<ul style="list-style-type: none"> <li>High school diploma with 2.0 GPA</li> <li>Language requirement:                             <ul style="list-style-type: none"> <li>TOEFL iBT 78 <b>or</b></li> <li>IELTS 6.0 <b>or</b></li> </ul> </li> <li>Completion of Academic English Level 6 with no grades below C</li> </ul>	<b>ENG 160</b> UNI 100 MTH* CMM 103	<b>Academic English and Composition</b> Freshman First Class Variable depending on placement Fundamentals of Speech Communication	<b>6</b> 1 3-5 3
	<b>Total</b>		<b>13-15</b>

Visual Arts		
Standard Pathway - 2 Semesters	Degree Program Components	Program Information
Fall: August 17, 2016 Spring: January 5, 2017 Summer: May 11, 2017	120 credit hour program 31 credit hours apply from Pathway 89 credit hours remaining toward degree	

Entry Requirements	Semester 1	Course Title	Credit Hours	Progression Requirements
	<ul style="list-style-type: none"> <li>High school diploma with 2.0 GPA</li> <li>Language requirement:                             <ul style="list-style-type: none"> <li>TOEFL iBT 60 <b>or</b></li> <li>IELTS 5.5 (5.0 minimum subscores) <b>or</b></li> <li>Password Overall Level 6 <b>or</b></li> <li>PTEA 44 <b>or</b></li> </ul> </li> <li>Completion of Academic English Level 4 with no grades below C</li> </ul>	<b>ENG 150</b> <b>ENG 151</b> ART 101 ART 214 ART 217 UNI 100	<b>Academic Listening and Speaking</b> <b>Academic Reading</b> Intro to Visual Arts for Art Majors Intro to Design Drawing I Freshman First Class	
	<b>Total</b>		<b>16</b>	
	Semester 2	Course Title	Credit Hours	
	<b>ENG 160</b> ART 215 ART 219 FYS 100	<b>Academic English and Composition</b> Three Dimensional Design Digital Media First-Year Seminar	<b>6</b> 3 3 3	<b>These courses are generally delivered through the INTO Marshall Center and are for Pathway students only.</b>
	<b>Total</b>		<b>15</b>	

Accelerated Pathway - 1 Semester	Degree Program Components	Program Information
Fall: August 17, 2016 Spring: January 5, 2017 Summer: May 11, 2017	120 credit hour program 13 credit hours apply from Pathway 107 credit hours remaining toward degree	

Entry Requirements	Semester 1	Course Title	Credit Hours
<ul style="list-style-type: none"> <li>High school diploma with 2.0 GPA</li> <li>Language requirement:                             <ul style="list-style-type: none"> <li>TOEFL iBT 78 <b>or</b></li> <li>IELTS 6.0 <b>or</b></li> </ul> </li> <li>Completion of Academic English Level 6 with no grades below C</li> </ul>	<b>ENG 160</b> ART 101 ART 214 UNI 100	<b>Academic English and Composition</b> Intro to Visual Arts for Art Majors Intro to Design Freshman First Class	<b>6</b> 3 3 1
	<b>Total</b>		<b>13</b>

Marshall University is a leading, regional research university. World-class facilities support an active and ambitious research agenda including modern DNA, digital forensics and biotechnology research labs.

#1

Forensic science program in the US  
(*American Board of Criminalistics 2015*)



Hands-on, experiential learning offers students real-world knowledge to excel after graduation

# Graduate



#17

Ranked master's program in  
Special Education in the US  
([graduateprograms.com](http://graduateprograms.com) 2014)



State-of-the-art engineering  
complex opened in 2015

# Graduate Direct Entry

A master's degree usually takes two years of full-time study. The two main types of master's degree programs are professional master's degrees and research master's degrees, both of which are offered at Marshall University.

## 1. Meet Admission Requirements

Visit Marshall University's website to review the admission requirements for your degree program. Ensure you meet all academic and language requirements for admission.

- A US bachelor's degree or equivalent
- 2.5 or higher GPA on a US 4.0 scale
- To meet the English language requirement, credentials proving English proficiency must be received. These items may include, but are not limited to:
  - TOEFL iBT 80+ **or**
  - IELTS 6.5 **or**
  - Successful completion of Academic English Level 6 with no grade below B
  - GRE/GMAT may be required for some programs
- For more information on proving English proficiency, visit: [marshall.edu/graduate/admissions/international-admission](http://marshall.edu/graduate/admissions/international-admission)

## Start Dates for Marshall University Degree Programs\*

Semester	First Day of Classes	Graduate Application Deadline	Application Fee
Fall 2016	August 22, 2016	June 15, 2016	\$150
Spring 2017	January 9, 2017	October 15, 2017	\$150
Summer 2017	May 15, 2017	March 15, 2017	\$150

\* All start dates are approximate and subject to change. Final dates will be announced at least six months prior to start date. Graduate application deadline for specific programs may vary.

## 2. Understand Admissions

The graduate admission process involves an initial review by Graduate Admissions to ensure that your application is complete and minimum institutional requirements are met. The completed application and supporting materials are then sent to the degree program you select for an admission decision.

For detailed admissions information, visit: [marshall.edu/graduate/admissions/international-admission](http://marshall.edu/graduate/admissions/international-admission)

## 3. Submit Your Application

- Apply online or download the application and fill out all required fields
- The application requires a \$150 non-refundable application fee paid by check, money order or credit card

For more information, visit: [marshall.edu/admissions/apply](http://marshall.edu/admissions/apply)



**Academic and English Testing Score Codes for Marshall University**

<b>GRE: 5396</b>	<b>TOEFL: 5396</b>	<b>GMAT: DIRECT</b>	<b>IELTS: DIRECT</b>
------------------	--------------------	---------------------	----------------------

**4. Provide Required Documents**

- Official university transcripts and other credentials required by the program must be mailed directly to Marshall University Admissions Office from the registrar or equivalent officer at your university.
- Transcripts and other required credentials must be submitted in the original language, accompanied by an official English translation, from the issuing institution. Transcripts must contain all college or university academic credits, grades and documentation of degrees earned.
- For applicants whose first language is not English, or applicants who hold an earned bachelor's degree from a non-English institution, English language proficiency credentials must be received.
- GRE or other graduate examination test scores if required by degree program.
- Submit a copy of your passport with your admission application.

All official admission credentials should be sent directly to the Marshall University Admissions Office in a sealed and stamped envelope:

**Marshall University**

Admissions Office  
102 Old Main  
One John Marshall Dr.  
Huntington, West Virginia 25755  
USA

**T: +1 800 642 9842**

**E: [international@marshall.edu](mailto:international@marshall.edu)**

**5. Finalize Your Plans**

If admitted, you will receive a letter of acceptance and an I-20 form. The I-20 form is used to apply for a student visa (F-1) at an American Embassy or Consulate. Marshall will also send a housing application and a form you can complete to notify the university of your arrival.

Additional pre-departure and orientation information is available at:  
[marshall.edu/cip/newstudentchecklist](http://marshall.edu/cip/newstudentchecklist)

**Third-party Authorization**

If a family member or educational counselor is assisting with the completion of your application and you would like for Marshall to communicate with them regarding your application, please contact the Marshall University Admissions office at [admissions@marshall.edu](mailto:admissions@marshall.edu) or 1-800-642-3499.

**Key Program Facts****Start Dates\***

- Fall: August 22, 2016
- Spring: January 9, 2017
- Summer: May 15, 2017

\* All start dates are approximate and subject to change. Final dates will be announced at least six months prior to start date.

**Application Deadlines**

- Fall: June 15, 2016
- Spring: October 15, 2016
- Summer: March 15, 2017

**Academic Entry Requirement**

- A US bachelor's degree or equivalent with a minimum 2.5 GPA on a US 4.0 scale
- Minimum GRE or GMAT scores, if required by desired degree program
- The degree program you select may have additional requirements with which you must comply

**Note:** Meeting the minimum admission requirements does not guarantee admission to Marshall University or any specific program. Admission decisions may be based on such factors as the suitability of the applicant's research interests, the availability of professors in a particular field of research and the number of qualified applicants.

**English Language Entry Requirement**

- TOEFL iBT 80+ or
- IELTS 6.5 or
- Successful completion of Academic English Level 6 with no grades below B

[marshall.edu/graduate](http://marshall.edu/graduate)



# Graduate Pathway Programs

Students enrolled in Graduate Pathway programs have the opportunity to begin earning credits toward their master’s degree while also receiving English instruction from INTO Marshall University.

### Understand the Pathway Program

The innovative Graduate Pathway programs offered at INTO Marshall are designed to develop international students’ academic knowledge and strengthen their language ability and study skills, enabling them to progress successfully to a Marshall University graduate degree program.

There are two Pathway options for students with the equivalent of a four-year undergraduate bachelor’s degree:

### Standard Pathway (two semesters)

- Students with an equivalent four-year bachelor’s degree, and
- TOEFL iBT 70+, IELTS 6.0 or completion of Academic English Level 5 with no grade below C at that level.

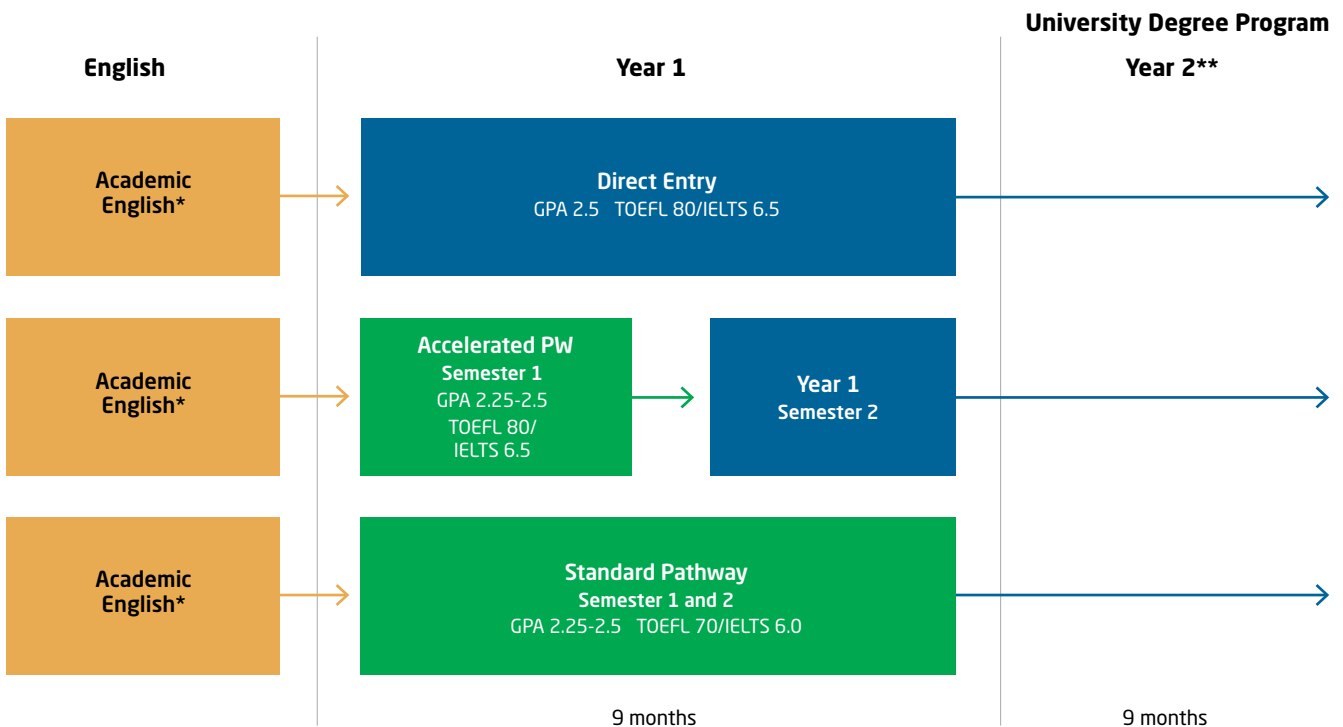
### Accelerated Pathway (one semester)

- Students with an equivalent four-year bachelor’s degree, and
- TOEFL iBT 80+, IELTS 6.5 or completion of Academic English Level 6 with no grade below B at that level.

### Decide if the Program is Right for You

The Graduate Pathway program is for students who:

- Want to study for a graduate degree in the US
- Desire additional academic, language and cultural support in order to succeed during the first year at a US university
- May need to improve English language skills
- May have a lower GPA than required for direct admission to degree program
- Meet any or all of the above criteria



\*The length of your Academic English program before Pathway depends on your level of English.

\*\*Length of graduate degree program depends on the academic area of study and the intended degree type, and may take longer than two years to complete.



### Fully Integrated University Experience

The academic courses included in the Graduate Pathway programs are carefully chosen to ensure student success in graduate-level studies. Academic courses are all existing Marshall courses and most will provide an opportunity to study alongside both American and international students. The exact program structure and combination of classes taken will depend upon a student's previous academic record and future study plan. Students will be registered into required courses before their academic orientation at the INTO Marshall Center.

In addition to intensive English instruction, students will also receive instruction in study skills and GMAT test preparation if needed.

Student work is monitored by Graduate Pathway Coordinators who provide additional academic support for students who have difficulty in classes. The coordinators also assist students by working with academic department officials to obtain official approval of any changes that students may need to make to their study plans.

### Program Benefits

Pathway students receive the highest level of support during their transition abroad, making it an ideal choice for international students who are driven to achieve high academic goals. Students who successfully complete a Graduate Pathway program are assured progression to a Marshall graduate degree program upon submission of additional required application materials.

Other benefits include:

- Full integration with domestic and international students on the Marshall campus
- Access to all Marshall cultural events, athletic events and activities including Marshall's state-of-the-art recreation center
- Classrooms and accommodations in the heart of Marshall's compact and accessible campus with shopping, dining and other services located nearby
- Highest level of support for student success
- Highly trained and experienced university instructors
- Academic advising throughout the program

### Key Program Facts

#### Graduate Pathway Programs

##### Business

- Accountancy (page 35)
- Business Administration (page 36)
- Health Care Administration (page 39)
- Human Resource Management (page 39)

##### Health Professions

- Exercise Science (page 38)
- Sport Administration (page 42)

##### Information Technology and Engineering

- Computer Science (page 36)
- Engineering (page 37)
- Environmental Science (page 38)
- Information Systems (page 40)
- Mechanical Engineering (page 34)
- Safety (page 41)
- Technology Management (page 42)

##### Liberal Arts

- English-TESOL (page 37)

##### Science

- Mathematics (page 41)

#### Start Dates\*

- Fall: August 17, 2016
- Spring: January 5, 2017
- Summer: May 11, 2017

\* All start dates are approximate and subject to change. Final dates will be announced at least six months prior to start date. Students must arrive at least one day prior to the start dates.

#### Program Duration

- Standard Pathway programs are two semesters (9 months)
- Accelerated Pathway programs are one semester (4 months)

#### Entry Requirements - Standard Pathway (2 Semesters)

- Bachelor's degree or equivalent with 2.25-2.5 GPA
- TOEFL iBT 70-79 **or** IELTS 6.0 **or** Password Overall Level 7 **or** PTEA 48 **or** completion of Academic English Level 5 with no grades below C at that level

#### Entry Requirements - Accelerated Pathway (1 Semester)

- Bachelor's degree or equivalent with 2.25-2.5 GPA (Exact GPA required depends on program)
- TOEFL iBT 80 **or** IELTS 6.5 **or** completion of Academic English Level 6 with no grades below B at that level

#### Progression Requirements

- Minimum 3.0-3.25 GPA in graduate level courses
- No grades below B in all 500/600 level courses
- No grades below C in ENG 150, 151 and 160
- No I grades
- Some Pathway programs require GRE or GMAT scores be on file by the end of the final Pathway semester
- Successful completion of all required courses

#### Program Notes

- Students using Password and PTEA as proof of English level will take an English placement test upon arrival. Students scoring below the required entry standard for their Pathway will be placed in Academic English.
- Academic graduate courses in the Pathway may be substituted with other academic graduate courses depending on availability. Any course substitution will count toward the degree.



# Graduate Pathway Programs



## NEW: Mechanical Engineering

The MS in Mechanical Engineering integrates in-depth knowledge of core areas in mechanical engineering such as mechanics, thermal science, materials and manufacturing, control systems and product design and development with advanced study in computing and physical sciences. This integration is critical for multidisciplinary areas such as bio and manufacturing engineering, robotics, nanotechnologies and energy systems.

Tools ranging from computer simulation and systems modeling to advanced experimental techniques are developed and applied to provide a more profound understanding of fundamental phenomena, processes and system characteristics in these areas.

MSME students will be among the first to study and research in the new \$56 million Arthur Weisberg Family Applied Engineering Complex, pictured above, which opened in 2015.

The MSME degree program prepares students for leadership roles in industry, government and private research. The program also prepares students who desire to pursue further graduate work leading to a PhD degree. Graduates with MS degrees in mechanical engineering pursue careers as product designers, research and development engineers, analysts, consultants, educators and more.

## NEW: Master of Science in Mechanical Engineering

### Standard Pathway - 2 Semesters

Fall: August 17, 2016  
Spring: January 5, 2017

### Degree Program Components

30 credit hour program  
12 credit hours apply from Pathway  
18 credit hours remaining toward degree

### Program Information

#### Entry Requirements

- Bachelor's degree in Engineering
- 2.25 undergraduate GPA
- Language requirement:
  - TOEFL iBT 70-79 **or**
  - IELTS 6.0 **or**
  - Password Overall Level 7 **or**
  - PTEA 48 **or**
  - Completion of Academic English Level 5 with no grades below C

Semester 1	Course Title	Credit Hours
ENG 150	Academic Listening and Speaking	3
ENG 151	Academic Reading	3
ENGR 570	Finite Element Analysis	3
ME 601	Advanced Engineering Analysis I	3
<b>Total</b>		<b>12</b>

#### Progression Requirements

- Minimum 3.25 GPA in graduate level courses
- No grades below B in all 500/600 level courses
- No grades below C in ENG 150, 151 and 160
- No I grades

Semester 2	Course Title	Credit Hours
ENG 160	Academic Composition and Culture	6
Variable	Any course offered in the major	3
Variable	Any course offered in the major	3
<b>Total</b>		<b>12</b>

#### Notes

Depending on the engineering emphasis selected, additional coursework may be required.  
Undergraduate credits do not count toward the degree; they serve as pre-degree foundation requirements.  
Some courses may be offered at the South Charleston campus.  
No Summer courses are offered for this program.

### Accelerated Pathway - 1 Semester

Fall: August 17, 2016  
Spring: January 5, 2017

### Degree Program Components

30 credit hour program  
6 credit hours apply from Pathway  
24 credit hours remaining toward degree

**These courses are generally delivered through the INTO Marshall Center and are for Pathway students only.**

#### Entry Requirements

- Bachelor's degree in Engineering
- 2.25 undergraduate GPA
- Language requirement:
  - TOEFL iBT 80 **or**
  - IELTS 6.5 **or**
  - Completion of Academic English Level 6 with no grades below B

Semester 1	Course Title	Credit Hours
ENG 160	Academic Composition and Culture	6
ENGR 570	Finite Element Analysis	3
ME 601	Advanced Engineering Analysis I	3
<b>Total</b>		<b>12</b>

Master of Science in Accountancy for Undergraduate Accounting Degree Students				
<b>Standard Pathway - 2 Semesters</b> Fall: August 17, 2016 Spring: January 5, 2017	<b>Degree Program Components</b> 30 credit hour program 12 credit hours apply from Pathway 18 credit hours remaining toward degree		<b>Program Information</b>	
<b>Entry Requirements</b> <ul style="list-style-type: none"> <li>Bachelor's degree in Accounting</li> <li>2.25 undergraduate GPA</li> <li>Language requirement:                             <ul style="list-style-type: none"> <li>TOEFL iBT 70-79 <b>or</b></li> <li>IELTS 6.0 <b>or</b></li> <li>Password Overall Level 7 <b>or</b></li> <li>PTEA 48 <b>or</b></li> </ul> </li> <li>Completion of Academic English Level 5 with no grades below C</li> </ul>	<b>Semester 1</b>	<b>Course Title</b>	<b>Credit Hours</b>	
	ENG 150	Academic Listening and Speaking	3	
	ENG 151	Academic Reading	3	
	ACC 616	Advanced Income Tax Procedure	3	
	ACC 618	Accounting Research	3	
		GMAT Preparation Workshop	0	
		<b>Total</b>	<b>12</b>	
	<b>Semester 2</b>	<b>Course Title</b>	<b>Credit Hours</b>	
	ENG 160	Academic Composition and Culture	6	
	ACC 615	Audit Theory and Practice	3	
ACC 632	Auditing Accounting Information Systems	3		
	<b>Total</b>	<b>12</b>		
<b>Accelerated Pathway - 1 Semester</b> Fall: August 17, 2016 Spring: January 5, 2017	<b>Degree Program Components</b> 30 credit hour program 6 credit hours apply from Pathway 24 credit hours remaining toward degree			
	<b>Semester 1</b>	<b>Course Title</b>	<b>Credit Hours</b>	
	ENG 160	Academic Composition and Culture	6	
	ACC 616	Advanced Income Tax Procedure	3	
	ACC 618	Accounting Research	3	
		GMAT Preparation Workshop	0	
		<b>Total</b>	<b>12</b>	
	<b>Semester 2</b>	<b>Course Title</b>	<b>Credit Hours</b>	
	ENG 160	Academic Composition and Culture	6	
	ACC 616	Advanced Income Tax Procedure	3	
ACC 618	Accounting Research	3		
	GMAT Preparation Workshop	0		
	<b>Total</b>	<b>12</b>		
<b>Progression Requirements</b> <ul style="list-style-type: none"> <li>Minimum 3.0 GPA in graduate level courses</li> <li>No grades below B in all 500/600 level courses</li> <li>No grades below C in ENG 150, 151 and 160</li> <li>No I grades</li> <li>GMAT overall score of 500, minimum verbal score in 15th percentile</li> </ul>				
<b>Notes</b> Based on evaluation of applicant's undergraduate transcript, some 300-level Accounting Foundation courses may be required. Each Foundation course increases the total credit hours required for graduation in the Accountancy degree program by 3 credit hours. Should Foundation courses be required, they will replace 600-level courses in the Pathway. No Summer courses are offered for this program. <b>These courses are generally delivered through the INTO Marshall Center and are for Pathway students only.</b>				

Master of Science in Accountancy for Undergraduate Business Degree Students				
<b>Standard Pathway - 2 Semesters</b> Fall: August 17, 2016 Spring: January 5, 2017	<b>Degree Program Components</b> 48 credit hour program 12 credit hours apply from Pathway 36 credit hours remaining toward degree		<b>Program Information</b>	
<b>Entry Requirements</b> <ul style="list-style-type: none"> <li>Bachelor's degree in Business</li> <li>2.25 undergraduate GPA</li> <li>Language requirement:                             <ul style="list-style-type: none"> <li>TOEFL iBT 70-79 <b>or</b></li> <li>IELTS 6.0 <b>or</b></li> <li>Password Overall Level 7 <b>or</b></li> <li>PTEA 48 <b>or</b></li> </ul> </li> <li>Completion of Academic English Level 5 with no grades below C</li> </ul>	<b>Semester 1</b>	<b>Course Title</b>	<b>Credit Hours</b>	
	ENG 150	Academic Listening and Speaking	3	
	ENG 151	Academic Reading	3	
	ACC 311	Intermediate Accounting I	3	
	ACC 348	Federal Taxation	3	
		GMAT Preparation Workshop	0	
		<b>Total</b>	<b>12</b>	
	<b>Semester 2</b>	<b>Course Title</b>	<b>Credit Hours</b>	
	ENG 160	Academic Composition and Culture	6	
	ACC 312	Intermediate Accounting II	3	
ACC 341	Accounting Information Systems	3		
	<b>Total</b>	<b>12</b>		
<b>Accelerated Pathway - 1 Semester</b> Fall: August 17, 2016 Spring: January 5, 2017	<b>Degree Program Components</b> 48 credit hour program 6 credit hours apply from Pathway 30 credit hours remaining toward degree			
	<b>Semester 1</b>	<b>Course Title</b>	<b>Credit Hours</b>	
	ENG 160	Academic Composition and Culture	6	
	ACC 311	Intermediate Accounting I	3	
	ACC 348	Federal Taxation	3	
		GMAT Preparation Workshop	0	
		<b>Total</b>	<b>12</b>	
	<b>Semester 2</b>	<b>Course Title</b>	<b>Credit Hours</b>	
	ENG 160	Academic Composition and Culture	6	
	ACC 311	Intermediate Accounting I	3	
ACC 348	Federal Taxation	3		
	GMAT Preparation Workshop	0		
	<b>Total</b>	<b>12</b>		
<b>Progression Requirements</b> <ul style="list-style-type: none"> <li>Minimum 2.0 GPA in Pathway</li> <li>No grades below C in all 300 level ACC courses</li> <li>No grades below C in ENG 150, 151 and 160</li> <li>No I grades</li> <li>GMAT overall score of 500, minimum verbal score in 15th percentile</li> </ul>				
<b>Notes</b> Based on evaluation of applicant's undergraduate transcript, some or all of the 300-level Accounting courses may be waived. Each 300-level course that is waived reduces the total credit hours required for graduation in the Accountancy degree program by 3 credit hours. For each waived 300-level course, another College of Business course will be substituted in the Pathway. For any 500/600 level courses that are substituted, students must achieve a grade of B or higher. No Summer courses are offered for this program. <b>These courses are generally delivered through the INTO Marshall Center and are for Pathway students only.</b>				

# Graduate Pathway Programs

Master of Business Administration																																			
Standard Pathway - 2 Semesters	Degree Program Components		Program Information																																
Fall: August 17, 2016 Spring: January 5, 2017 Summer: May 11, 2017	36-51 credit hour program 12 credit hours apply from Pathway 24-39 credit hours remaining toward degree																																		
<b>Entry Requirements</b> <ul style="list-style-type: none"> <li>Bachelor's degree</li> <li>2.25 undergraduate GPA</li> <li>Language requirement:               <ul style="list-style-type: none"> <li>TOEFL iBT 70-79 <b>or</b></li> <li>IELTS 6.0 <b>or</b></li> <li>Password Overall Level 7 <b>or</b></li> <li>PTEA 48 <b>or</b></li> <li>Completion of Academic English Level 5 with no grades below C</li> </ul> </li> </ul>	<table border="1"> <thead> <tr> <th>Semester 1</th> <th>Course Title</th> <th>Credit Hours</th> </tr> </thead> <tbody> <tr> <td>ENG 150</td> <td>Academic Listening and Speaking</td> <td>3</td> </tr> <tr> <td>ENG 151</td> <td>Academic Reading</td> <td>3</td> </tr> <tr> <td>MGT 500</td> <td>Analytic Methods and Techniques</td> <td>3</td> </tr> <tr> <td>MKT 511</td> <td>Marketing and Management</td> <td>3</td> </tr> <tr> <td colspan="2" style="text-align: right;"><b>Total</b></td> <td><b>12</b></td> </tr> </tbody> </table> <table border="1"> <thead> <tr> <th>Semester 2</th> <th>Course Title</th> <th>Credit Hours</th> </tr> </thead> <tbody> <tr> <td>ENG 160</td> <td>Academic Composition and Culture</td> <td>6</td> </tr> <tr> <td>ECN 501</td> <td>Economic Analysis</td> <td>3</td> </tr> <tr> <td>ACC 510</td> <td>Survey of Accounting</td> <td>3</td> </tr> <tr> <td colspan="2" style="text-align: right;"><b>Total</b></td> <td><b>12</b></td> </tr> </tbody> </table>	Semester 1	Course Title	Credit Hours	ENG 150	Academic Listening and Speaking	3	ENG 151	Academic Reading	3	MGT 500	Analytic Methods and Techniques	3	MKT 511	Marketing and Management	3	<b>Total</b>		<b>12</b>	Semester 2	Course Title	Credit Hours	ENG 160	Academic Composition and Culture	6	ECN 501	Economic Analysis	3	ACC 510	Survey of Accounting	3	<b>Total</b>		<b>12</b>	<b>Progression Requirements</b> <ul style="list-style-type: none"> <li>Minimum 3.0 GPA in graduate level courses</li> <li>No grades below B in all 500/600 level courses</li> <li>No grades below C in ENG 150, 151 and 160</li> <li>No I grades</li> </ul> <b>Notes</b> Based on evaluation of applicant's undergraduate transcript, some or all of the 500-level College of Business courses may be waived. Each 500-level course that is waived will be substituted by a COB 600-level course and reduce the total credit hours required for graduation in the MBA degree program by 3 credits hours. <b>These courses are generally delivered through the INTO Marshall Center and are for Pathway students only.</b>
Semester 1	Course Title	Credit Hours																																	
ENG 150	Academic Listening and Speaking	3																																	
ENG 151	Academic Reading	3																																	
MGT 500	Analytic Methods and Techniques	3																																	
MKT 511	Marketing and Management	3																																	
<b>Total</b>		<b>12</b>																																	
Semester 2	Course Title	Credit Hours																																	
ENG 160	Academic Composition and Culture	6																																	
ECN 501	Economic Analysis	3																																	
ACC 510	Survey of Accounting	3																																	
<b>Total</b>		<b>12</b>																																	
<b>Accelerated Pathway - 1 Semester</b> Fall: August 17, 2016 Spring: January 5, 2017 Summer: May 11, 2017	36-51 credit hour program 6 credit hours apply from Pathway 30-45 credit hours remaining toward degree																																		
<b>Entry Requirements</b> <ul style="list-style-type: none"> <li>Bachelor's degree</li> <li>2.25 undergraduate GPA</li> <li>Language requirement:               <ul style="list-style-type: none"> <li>TOEFL iBT 80 <b>or</b></li> <li>IELTS 6.5 <b>or</b></li> <li>Completion of Academic English Level 6 with no grades below B</li> </ul> </li> </ul>	<table border="1"> <thead> <tr> <th>Semester 1</th> <th>Course Title</th> <th>Credit Hours</th> </tr> </thead> <tbody> <tr> <td>ENG 160</td> <td>Academic Composition and Culture</td> <td>6</td> </tr> <tr> <td>MGT 500</td> <td>Analytic Methods and Techniques</td> <td>3</td> </tr> <tr> <td>ECN 501</td> <td>Economic Analysis</td> <td>3</td> </tr> <tr> <td colspan="2" style="text-align: right;"><b>Total</b></td> <td><b>12</b></td> </tr> </tbody> </table>	Semester 1	Course Title	Credit Hours	ENG 160	Academic Composition and Culture	6	MGT 500	Analytic Methods and Techniques	3	ECN 501	Economic Analysis	3	<b>Total</b>		<b>12</b>																			
Semester 1	Course Title	Credit Hours																																	
ENG 160	Academic Composition and Culture	6																																	
MGT 500	Analytic Methods and Techniques	3																																	
ECN 501	Economic Analysis	3																																	
<b>Total</b>		<b>12</b>																																	

Master of Science in Computer Science																																			
Standard Pathway - 2 Semesters	Degree Program Components		Program Information																																
Fall: August 17, 2016 Spring: January 5, 2017	30 credit hour program 12 credit hours apply from Pathway 18 credit hours remaining toward degree																																		
<b>Entry Requirements</b> <ul style="list-style-type: none"> <li>Bachelor's degree in Computer Science, Information Technology, Management Information Systems, or related area</li> <li>2.25 undergraduate GPA</li> <li>Language requirement:               <ul style="list-style-type: none"> <li>TOEFL iBT 70-79 <b>or</b></li> <li>IELTS 6.0 <b>or</b></li> <li>Password Overall Level 7 <b>or</b></li> <li>PTEA 48 <b>or</b></li> <li>Completion of Academic English Level 5 with no grades below C</li> </ul> </li> </ul>	<table border="1"> <thead> <tr> <th>Semester 1</th> <th>Course Title</th> <th>Credit Hours</th> </tr> </thead> <tbody> <tr> <td>ENG 150</td> <td>Academic Listening and Speaking</td> <td>3</td> </tr> <tr> <td>ENG 151</td> <td>Academic Reading</td> <td>3</td> </tr> <tr> <td>CS 502</td> <td>Computer Architecture</td> <td>3</td> </tr> <tr> <td>CS 510</td> <td>Database Systems</td> <td>3</td> </tr> <tr> <td colspan="2" style="text-align: right;"><b>Total</b></td> <td><b>12</b></td> </tr> </tbody> </table> <table border="1"> <thead> <tr> <th>Semester 2</th> <th>Course Title</th> <th>Credit Hours</th> </tr> </thead> <tbody> <tr> <td>ENG 160</td> <td>Academic Composition and Culture</td> <td>6</td> </tr> <tr> <td>CS 504</td> <td>High Performance Computing</td> <td>3</td> </tr> <tr> <td>CS 552</td> <td>Natural Language Processing</td> <td>3</td> </tr> <tr> <td colspan="2" style="text-align: right;"><b>Total</b></td> <td><b>12</b></td> </tr> </tbody> </table>	Semester 1	Course Title	Credit Hours	ENG 150	Academic Listening and Speaking	3	ENG 151	Academic Reading	3	CS 502	Computer Architecture	3	CS 510	Database Systems	3	<b>Total</b>		<b>12</b>	Semester 2	Course Title	Credit Hours	ENG 160	Academic Composition and Culture	6	CS 504	High Performance Computing	3	CS 552	Natural Language Processing	3	<b>Total</b>		<b>12</b>	<b>Progression Requirements</b> <ul style="list-style-type: none"> <li>Minimum 3.0 GPA in graduate level courses</li> <li>No grades below B in all 500/600 level courses</li> <li>No grades below C in ENG 150, 151 and 160</li> <li>No I grades</li> </ul> <b>Notes</b> No Summer courses are offered for this program. <b>These courses are generally delivered through the INTO Marshall Center and are for Pathway students only.</b>
Semester 1	Course Title	Credit Hours																																	
ENG 150	Academic Listening and Speaking	3																																	
ENG 151	Academic Reading	3																																	
CS 502	Computer Architecture	3																																	
CS 510	Database Systems	3																																	
<b>Total</b>		<b>12</b>																																	
Semester 2	Course Title	Credit Hours																																	
ENG 160	Academic Composition and Culture	6																																	
CS 504	High Performance Computing	3																																	
CS 552	Natural Language Processing	3																																	
<b>Total</b>		<b>12</b>																																	
<b>Accelerated Pathway - 1 Semester</b> Fall: August 17, 2016 Spring: January 5, 2017	30 credit hour program 9 credit hours apply from Pathway 21 credit hours remaining toward degree																																		
<b>Entry Requirements</b> <ul style="list-style-type: none"> <li>Bachelor's degree in Computer Science, Information Technology, Management Information Systems, or related area</li> <li>2.25 undergraduate GPA</li> <li>Language requirement:               <ul style="list-style-type: none"> <li>TOEFL iBT 80 <b>or</b></li> <li>IELTS 6.5 <b>or</b></li> <li>Completion of Academic English Level 6 with no grades below B</li> </ul> </li> </ul>	<table border="1"> <thead> <tr> <th>Semester 1</th> <th>Course Title</th> <th>Credit Hours</th> </tr> </thead> <tbody> <tr> <td>ENG 160</td> <td>Academic Composition and Culture</td> <td>6</td> </tr> <tr> <td>CS 502</td> <td>Computer Architecture</td> <td>3</td> </tr> <tr> <td>CS 510</td> <td>Database Systems</td> <td>3</td> </tr> <tr> <td>CS 552</td> <td>Natural Language Processing</td> <td>3</td> </tr> <tr> <td colspan="2" style="text-align: right;"><b>Total</b></td> <td><b>15</b></td> </tr> </tbody> </table>	Semester 1	Course Title	Credit Hours	ENG 160	Academic Composition and Culture	6	CS 502	Computer Architecture	3	CS 510	Database Systems	3	CS 552	Natural Language Processing	3	<b>Total</b>		<b>15</b>																
Semester 1	Course Title	Credit Hours																																	
ENG 160	Academic Composition and Culture	6																																	
CS 502	Computer Architecture	3																																	
CS 510	Database Systems	3																																	
CS 552	Natural Language Processing	3																																	
<b>Total</b>		<b>15</b>																																	

Master of Science in Engineering				
Standard Pathway - 2 Semesters	Degree Program Components		Program Information	
Fall: August 17, 2016 Spring: January 5, 2017	30 credit hour program 12 credit hours apply from Pathway 18 credit hours remaining toward degree			
<b>Entry Requirements</b> <ul style="list-style-type: none"> <li>Bachelor's degree in Engineering</li> <li>2.25 undergraduate GPA</li> <li>Language requirement:                             <ul style="list-style-type: none"> <li>TOEFL iBT 70-79 <b>or</b></li> <li>IELTS 6.0 <b>or</b></li> </ul> </li> <li>Password Overall Level 7 <b>or</b></li> <li>PTEA 48 <b>or</b></li> <li>Completion of Academic English Level 5 with no grades below C</li> </ul>	<b>Semester 1</b>	<b>Course Title</b>	<b>Credit Hours</b>	
	ENG 150	Academic Listening and Speaking	3	
	ENG 151	Academic Reading	3	
	Variable	Any course offered in the major	3	
	Variable	Any course offered in the major	3	
	<b>Total</b>			<b>12</b>
		<b>Semester 2</b>	<b>Course Title</b>	<b>Credit Hours</b>
	ENG 160	Academic Composition and Culture	6	
	Variable	Any course offered in the major	3	
	Variable	Any course offered in the major	3	
<b>Total</b>			<b>12</b>	
	<b>Progression Requirements</b>		<ul style="list-style-type: none"> <li>Minimum 3.25 GPA in graduate level courses</li> <li>No grades below B in all 500/600 level courses</li> <li>No grades below C in ENG 150, 151 and 160</li> <li>No I grades</li> </ul>	
	<b>Notes</b>		Depending on the engineering emphasis selected, additional coursework may be required. Some courses may be offered at the South Charleston campus. No Summer courses are offered for this program.	
	<b>These courses are generally delivered through the INTO Marshall Center and are for Pathway students only.</b>			
Accelerated Pathway - 1 Semester	Degree Program Components		Program Information	
Fall: August 17, 2016 Spring: January 5, 2017	30 credit hour program 9 credit hours apply from Pathway 21 credit hours remaining toward degree			
<b>Entry Requirements</b> <ul style="list-style-type: none"> <li>Bachelor's degree in Engineering</li> <li>2.25 undergraduate GPA</li> <li>Language requirement:                             <ul style="list-style-type: none"> <li>TOEFL iBT 80 <b>or</b></li> <li>IELTS 6.5 <b>or</b></li> </ul> </li> <li>Completion of Academic English Level 6 with no grades below B</li> </ul>	<b>Semester 1</b>	<b>Course Title</b>	<b>Credit Hours</b>	
	ENG 160	Academic Composition and Culture	6	
	Variable	Any course offered in the major	3	
	Variable	Any course offered in the major	3	
	Variable	Any course offered in the major	3	
	<b>Total</b>			<b>15</b>

Master of Arts in English with TESOL Emphasis				
Standard Pathway - 2 Semesters	Degree Program Components		Program Information	
Fall: August 17, 2016 Spring: January 5, 2017	36 credit hour program 12 credit hours apply from Pathway 24 credit hours remaining toward degree			
<b>Entry Requirements</b> <ul style="list-style-type: none"> <li>Bachelor's degree</li> <li>2.5 undergraduate GPA</li> <li>Language requirement:                             <ul style="list-style-type: none"> <li>TOEFL iBT 70-79 <b>or</b></li> <li>IELTS 6.0 <b>or</b></li> </ul> </li> <li>Password Overall Level 7 <b>or</b></li> <li>PTEA 48 <b>or</b></li> <li>Completion of Academic English Level 5 with no grades below C</li> </ul>	<b>Semester 1</b>	<b>Course Title</b>	<b>Credit Hours</b>	
	ENG 150	Academic Listening and Speaking	3	
	ENG 151	Academic Reading	3	
	ENG 575	Introduction to Linguistics	3	
	ENG 578	Introduction to Sociolinguistics	3	
	<b>Total</b>			<b>12</b>
		<b>Semester 2</b>	<b>Course Title</b>	<b>Credit Hours</b>
	ENG 160	Academic Composition and Culture	6	
	Variable	Choose course with advisor	3	
	Variable	Choose course with advisor	3	
<b>Total</b>			<b>12</b>	
	<b>Progression Requirements</b>		<ul style="list-style-type: none"> <li>Minimum 3.0 GPA in graduate level courses</li> <li>No grades below B in all 500/600 level courses</li> <li>No grades below C in ENG 150, 151 and 160</li> <li>No I grades</li> </ul>	
	<b>Notes</b>		No Summer courses are offered for this program. <b>These courses are generally delivered through the INTO Marshall Center and are for Pathway students only.</b>	
Accelerated Pathway - 1 Semester	Degree Program Components		Program Information	
Fall: August 17, 2016 Spring: January 5, 2017	36 credit hour program 6 credit hours apply from Pathway 30 credit hours remaining toward degree			
<b>Entry Requirements</b> <ul style="list-style-type: none"> <li>Bachelor's degree</li> <li>2.5 undergraduate GPA</li> <li>Language requirement:                             <ul style="list-style-type: none"> <li>TOEFL iBT 80 <b>or</b></li> <li>IELTS 6.5 <b>or</b></li> </ul> </li> <li>Completion of Academic English Level 6 with no grades below B</li> </ul>	<b>Semester 1</b>	<b>Course Title</b>	<b>Credit Hours</b>	
	ENG 160	Academic Composition and Culture	6	
	ENG 575	Introduction to Linguistics	3	
	ENG 578	Introduction to Sociolinguistics	3	
	<b>Total</b>			<b>12</b>

# Graduate Pathway Programs

Master of Science in Environmental Science			
Standard Pathway - 2 Semesters	Degree Program Components		Program Information
Fall: August 17, 2016 Spring: January 5, 2017	36 credit hour program 12 credit hours apply from Pathway 24 credit hours remaining toward degree		
<b>Entry Requirements</b>	<b>Semester 1</b>	<b>Course Title</b>	<b>Credit Hours</b>
<ul style="list-style-type: none"> <li>Bachelor's degree in Natural Science (e.g., Biology, Chemistry, Physics, Geology)</li> <li>2.25 undergraduate GPA</li> <li>Language requirement:               <ul style="list-style-type: none"> <li>TOEFL iBT 70-79 <b>or</b></li> <li>IELTS 6.0 <b>or</b></li> <li>Password Overall Level 7 <b>or</b></li> <li>PTEA 48 <b>or</b></li> <li>Completion of Academic English Level 5 with no grades below C</li> </ul> </li> </ul>	<b>ENG 150</b> Academic Listening and Speaking <b>ENG 151</b> Academic Reading ES 575 Introduction to Environmental Science ENGR 610 Applied Statistics	3 3 3 3	<b>Progression Requirements</b> <ul style="list-style-type: none"> <li>Minimum 3.0 GPA in graduate level courses</li> <li>No grades below B in all 500/600 level courses</li> <li>No grades below C in ENG 150, 151 and 160</li> <li>No I grades</li> </ul>
	<b>Total 12</b>		
	<b>Semester 2</b>	<b>Course Title</b>	<b>Credit Hours</b>
	<b>ENG 160</b> Academic Composition and Culture EM 660 Project Management ES 560 Environmental Law	6 3 3	<b>Notes</b> No Summer courses are offered for this program. <b>These courses are generally delivered through the INTO Marshall Center and are for Pathway students only.</b>
	<b>Total 12</b>		
Accelerated Pathway - 1 Semester	Degree Program Components		
Fall: August 17, 2016 Spring: January 5, 2017	36 credit hour program 9 credit hours apply from Pathway 27 credit hours remaining toward degree		
<b>Entry Requirements</b>	<b>Semester 1</b>	<b>Course Title</b>	<b>Credit Hours</b>
<ul style="list-style-type: none"> <li>Bachelor's degree in Natural Science (e.g., Biology, Chemistry, Physics, Geology)</li> <li>2.25 undergraduate GPA</li> <li>Language requirement:               <ul style="list-style-type: none"> <li>TOEFL iBT 80 <b>or</b></li> <li>IELTS 6.5 <b>or</b></li> <li>Completion of Academic English Level 6 with no grades below B</li> </ul> </li> </ul>	<b>ENG 160</b> Academic Composition and Culture ES 575 Introduction to Environmental Science ENGR 610 Applied Statistics ES 514 Environmental Risk Assessment	6 3 3 3	
	<b>Total 15</b>		
Master of Science in Exercise Science			
Standard Pathway - 2 Semesters	Degree Program Components		Program Information
Fall: August 17, 2016 Spring: January 5, 2017 Summer: May 11, 2017	36-39 credit hour program 6 credit hours apply from Pathway 30 credit hours remaining toward degree		
<b>Entry Requirements</b>	<b>Semester 1</b>	<b>Course Title</b>	<b>Credit Hours</b>
<ul style="list-style-type: none"> <li>Bachelor's degree</li> <li>2.25 undergraduate GPA</li> <li>Successful completion of an undergraduate course in Exercise Physiology, Human Physiology, or equivalent</li> <li>Language requirement:               <ul style="list-style-type: none"> <li>TOEFL iBT 70-79 <b>or</b></li> <li>IELTS 6.0 <b>or</b></li> <li>Password Overall Level 7 <b>or</b></li> <li>PTEA 48 <b>or</b></li> <li>Completion of Academic English Level 5 with no grades below C</li> </ul> </li> </ul>	<b>ENG 150</b> Academic Listening and Speaking <b>ENG 151</b> Academic Reading ESS 578 Exercise Metabolism ESS 601 Advanced Exercise Testing	3 3 3 3	<b>Progression Requirements</b> <ul style="list-style-type: none"> <li>Minimum 3.0 GPA in graduate level courses</li> <li>No grades below B in all 500/600 level courses</li> <li>No grades below C in ENG 150, 151 and 160</li> <li>No I grades</li> </ul>
	<b>Total 12</b>		
	<b>Semester 2</b>	<b>Course Title</b>	<b>Credit Hours</b>
	<b>ENG 160</b> Academic Composition and Culture ESS 621 Exercise Physiology I Variable Choose course with advisor	6 3 3	<b>Notes</b> <b>These courses are generally delivered through the INTO Marshall Center and are for Pathway students only.</b>
	<b>Total 12</b>		
Accelerated Pathway - 1 Semester	Degree Program Components		
Fall: August 17, 2016 Spring: January 5, 2017 Summer: May 11, 2017	36 credit hour program 9 credit hours apply from Pathway 27 credit hours remaining toward degree		
<b>Entry Requirements</b>	<b>Semester 1</b>	<b>Course Title</b>	<b>Credit Hours</b>
<ul style="list-style-type: none"> <li>Bachelor's degree</li> <li>2.25 undergraduate GPA</li> <li>Successful completion of an undergraduate course in Exercise Physiology, Human Physiology, or equivalent</li> <li>Language requirement:               <ul style="list-style-type: none"> <li>TOEFL iBT 80 <b>or</b></li> <li>IELTS 6.5 <b>or</b></li> <li>Completion of Academic English Level 6 with no grades below B</li> </ul> </li> </ul>	<b>ENG 160</b> Academic Composition and Culture ESS 578 Exercise Metabolism ESS 601 Advanced Exercise Testing ESS 623 Advanced Exercise Physiology II	6 3 3 3	
	<b>Total 15</b>		

Master of Science in Health Care Administration				
Standard Pathway - 2 Semesters	Degree Program Components		Program Information	
Fall: August 17, 2016 Spring: January 5, 2017	36 credit hour program 12 credit hours apply from Pathway 24 credit hours remaining toward degree			
<b>Entry Requirements</b> <ul style="list-style-type: none"> <li>Bachelor's degree</li> <li>2.25 undergraduate GPA</li> <li>Language requirement:                             <ul style="list-style-type: none"> <li>TOEFL iBT 70-79 <b>or</b></li> <li>IELTS 6.0 <b>or</b></li> <li>Password Overall Level 7 <b>or</b></li> <li>PTEA 48 <b>or</b></li> <li>Completion of Academic English Level 5 with no grades below C</li> </ul> </li> </ul>	<b>Semester 1</b>	<b>Course Title</b>	<b>Credit Hours</b>	
	ENG 150	Academic Listening and Speaking	3	
	ENG 151	Academic Reading	3	
	HCA 600	The Health Care System	3	
	MKT 511	Marketing and Management	3	
	<b>Total</b>			<b>12</b>
		<b>Semester 2</b>	<b>Course Title</b>	<b>Credit Hours</b>
	ENG 160	Academic Composition and Culture	6	
	HCA 615	Health Care Economics	3	
	MGT 620	Human Resource Management	3	
<b>Total</b>			<b>12</b>	
	<b>Progression Requirements</b> <ul style="list-style-type: none"> <li>Minimum 3.0 GPA in graduate level courses</li> <li>No grades below B in all 500/600 level courses</li> <li>No grades below C in ENG 150, 151 and 160</li> <li>No I grades</li> </ul> These courses are generally delivered through the INTO Marshall Center and are for Pathway students only.			
Accelerated Pathway - 1 Semester	Degree Program Components			
Fall: August 17, 2016 Spring: January 5, 2017	36 credit hour program 6 credit hours apply from Pathway 30 credit hours remaining toward degree			
<b>Entry Requirements</b> <ul style="list-style-type: none"> <li>Bachelor's degree</li> <li>2.25 undergraduate GPA</li> <li>Language requirement:                             <ul style="list-style-type: none"> <li>TOEFL iBT 80 <b>or</b></li> <li>IELTS 6.5 <b>or</b></li> <li>Completion of Academic English Level 6 with no grades below B</li> </ul> </li> </ul>	<b>Semester 1</b>	<b>Course Title</b>	<b>Credit Hours</b>	
	ENG 160	Academic Composition and Culture	6	
	HCA 600	The Health Care System	3	
	MKT 511	Marketing and Management	3	
	<b>Total</b>			<b>12</b>

Master of Science in Human Resource Management				
Standard Pathway - 2 Semesters	Degree Program Components		Program Information	
Fall: August 17, 2016 Spring: January 5, 2017 Summer: May 11, 2017	36 credit hour program 12 credit hours apply from Pathway 24 credit hours remaining toward degree			
<b>Entry Requirements</b> <ul style="list-style-type: none"> <li>Bachelor's degree</li> <li>2.25 undergraduate GPA</li> <li>Language requirement:                             <ul style="list-style-type: none"> <li>TOEFL iBT 70-79 <b>or</b></li> <li>IELTS 6.0 <b>or</b></li> <li>Password Overall Level 7 <b>or</b></li> <li>PTEA 48 <b>or</b></li> <li>Completion of Academic English Level 5 with no grades below C</li> </ul> </li> </ul>	<b>Semester 1</b>	<b>Course Title</b>	<b>Credit Hours</b>	
	ENG 150	Academic Listening and Speaking	3	
	ENG 151	Academic Reading	3	
	ECN 501	Economic Analysis	3	
	MKT 511	Marketing and Management	3	
	<b>Total</b>			<b>12</b>
		<b>Semester 2</b>	<b>Course Title</b>	<b>Credit Hours</b>
	ENG 160	Academic Composition and Culture	6	
	HRM 600	Development of Labor Relations	3	
	MGT 620	Human Resource Management	3	
<b>Total</b>			<b>12</b>	
	<b>Progression Requirements</b> <ul style="list-style-type: none"> <li>Minimum 3.0 GPA in graduate level courses</li> <li>No grades below B in all 500/600 level courses</li> <li>No grades below C in ENG 150, 151 and 160</li> <li>No I grades</li> </ul> These courses are generally delivered through the INTO Marshall Center and are for Pathway students only.			
Accelerated Pathway - 1 Semester	Degree Program Components			
Fall: August 17, 2016 Spring: January 5, 2017 Summer: May 11, 2017	36 credit hour program 6 credit hours apply from Pathway 30 credit hours remaining toward degree			
<b>Entry Requirements</b> <ul style="list-style-type: none"> <li>Bachelor's degree</li> <li>2.25 undergraduate GPA</li> <li>Language requirement:                             <ul style="list-style-type: none"> <li>TOEFL iBT 80 <b>or</b></li> <li>IELTS 6.5 <b>or</b></li> <li>Completion of Academic English Level 6 with no grades below B</li> </ul> </li> </ul>	<b>Semester 1</b>	<b>Course Title</b>	<b>Credit Hours</b>	
	ENG 160	Academic Composition and Culture	6	
	ECN 501	Economic Analysis	3	
	MKT 511	Marketing and Management	3	
	<b>Total</b>			<b>12</b>

# Graduate Pathway Programs

## Master of Science in Information Systems

### Standard Pathway - 2 Semesters

Fall: August 17, 2016  
Spring: January 5, 2017

### Degree Program Components

36 credit hour program  
12 credit hours apply from Pathway  
24 credit hours remaining toward degree

### Program Information

#### Entry Requirements

- Bachelor's degree in Computer Science, Information Systems, Management Information Systems or Information Technology
- 2.25 undergraduate GPA
- Language requirement:
  - TOEFL iBT 70-79 **or**
  - IELTS 6.0 **or**
  - Password Overall Level 7 **or**
  - PTEA 48 **or**
  - Completion of Academic English Level 5 with no grades below C

#### Semester 1

Course Title	Credit Hours
ENG 150 Academic Listening and Speaking	3
ENG 151 Academic Reading	3
IS 600 Management Information Systems	3
IS 605 Systems Analysis	3
<b>Total</b>	<b>12</b>

#### Semester 2

Course Title	Credit Hours
ENG 160 Academic Composition and Culture	6
IS 610 Systems Design	3
IS 623 Database Management	3
<b>Total</b>	<b>12</b>

#### Progression Requirements

- Minimum 3.0 GPA in graduate level courses
- No grades below B in all 500/600 level courses
- No grades below C in ENG 150, 151 and 160
- No I grades

#### Notes

No Summer courses are offered for this program.

**These courses are generally delivered through the INTO Marshall Center and are for Pathway students only.**

### Accelerated Pathway - 1 Semester

Fall: August 17, 2016  
Spring: January 5, 2017

### Degree Program Components

36 credit hour program  
9 credit hours apply from Pathway  
27 credit hours remaining toward degree

#### Entry Requirements

- Bachelor's degree in Computer Science, Information Systems, Management Information Systems or Information Technology
- 2.25 undergraduate GPA
- Language requirement:
  - TOEFL iBT 80 **or**
  - IELTS 6.5 **or**
  - Completion of Academic English Level 6 with no grades below B

#### Semester 1

Course Title	Credit Hours
ENG 160 Academic Composition and Culture	6
IS 600 Management Information Systems	3
IS 605 Systems Analysis	3
IS 623 <b>OR</b> Database Management <b>OR</b> EM 660 Project Management	3
<b>Total</b>	<b>15</b>





Master of Arts In Mathematics				
Standard Pathway - 2 Semesters	Degree Program Components		Program Information	
Fall: August 17, 2016 Spring: January 5, 2017	36 credit hour program 12 credit hours apply from Pathway 24 credit hours remaining toward degree			
<b>Entry Requirements</b> <ul style="list-style-type: none"> <li>Bachelor's degree in Math</li> <li>2.25 undergraduate GPA</li> <li>Language requirement:                             <ul style="list-style-type: none"> <li>TOEFL iBT 70-79 <b>or</b></li> <li>IELTS 6.0 <b>or</b></li> </ul> </li> <li>Password Overall Level 7 <b>or</b></li> <li>PTEA 48 <b>or</b></li> <li>Completion of Academic English Level 5 with no grades below C</li> </ul>	<b>Semester 1</b>	<b>Course Title</b>	<b>Credit Hours</b>	
	ENG 150	Academic Listening and Speaking	3	
	ENG 151	Academic Reading	3	
	MTH 527	Advanced Calculus I	3	
	MTH 550	Modern Algebra I	3	
	<b>Total</b>			<b>12</b>
	<b>Semester 2</b>	<b>Course Title</b>	<b>Credit Hours</b>	
	ENG 160	Academic Composition and Culture	6	
	MTH 528	Advanced Calculus II	3	
	MTH 552	Modern Algebra II	3	
<b>Total</b>			<b>12</b>	
	<b>Progression Requirements</b> <ul style="list-style-type: none"> <li>Minimum 3.0 GPA in graduate level courses</li> <li>No grades below B in all 500/600 level courses</li> <li>No grades below C in ENG 150, 151 and 160</li> <li>No I grades</li> </ul>			
	<b>Notes</b> No Summer courses are offered for this program. These courses are generally delivered through the INTO Marshall Center and are for Pathway students only.			
Accelerated Pathway - 1 Semester	Degree Program Components			
Fall: August 17, 2016 Spring: January 5, 2017	36 credit hour program 9 credit hours apply from Pathway 27 credit hours remaining toward degree			
<b>Entry Requirements</b> <ul style="list-style-type: none"> <li>Bachelor's degree in Math</li> <li>2.25 undergraduate GPA</li> <li>Language requirement:                             <ul style="list-style-type: none"> <li>TOEFL iBT 80 <b>or</b></li> <li>IELTS 6.5 <b>or</b></li> </ul> </li> <li>Completion of Academic English Level 6 with no grades below B</li> </ul>	<b>Semester 1</b>	<b>Course Title</b>	<b>Credit Hours</b>	
	ENG 160	Academic Composition and Culture	6	
	MTH 527	Advanced Calculus I	3	
	MTH 550	Modern Algebra I	3	
	MTH 545	Probability and Statistics I	3	
	<b>Total</b>			<b>15</b>

Master of Science in Safety				
Standard Pathway - 2 Semesters	Degree Program Components		Program Information	
Fall: August 17, 2016 Spring: January 5, 2017	36 credit hour program 12 credit hours apply from Pathway 24 credit hours remaining toward degree			
<b>Entry Requirements</b> <ul style="list-style-type: none"> <li>Bachelor's degree in Natural Science (e.g., Biology, Chemistry, Physics, Geology)</li> <li>2.25 undergraduate GPA</li> <li>Language requirement:                             <ul style="list-style-type: none"> <li>TOEFL iBT 70-79 <b>or</b></li> <li>IELTS 6.0 <b>or</b></li> </ul> </li> <li>Password Overall Level 7 <b>or</b></li> <li>PTEA 48 <b>or</b></li> <li>Completion of Academic English Level 5 with no grades below C</li> </ul>	<b>Semester 1</b>	<b>Course Title</b>	<b>Credit Hours</b>	
	ENG 150	Academic Listening and Speaking	3	
	ENG 151	Academic Reading	3	
	SFT 540	Industrial Fire Protection	3	
	SFT 630	Current Literature and Research in Occupational Safety	3	
	<b>Total</b>			<b>12</b>
	<b>Semester 2</b>	<b>Course Title</b>	<b>Credit Hours</b>	
	ENG 160	Academic Composition and Culture	6	
	SFT 610	Philosophical and Psychological Concepts	3	
	ES 550	Environmental Law	3	
<b>Total</b>			<b>12</b>	
	<b>Progression Requirements</b> <ul style="list-style-type: none"> <li>Minimum 3.0 GPA in graduate level courses</li> <li>No grades below B in all 500/600 level courses</li> <li>No grades below C in ENG 150, 151 and 160</li> <li>No I grades</li> </ul>			
	<b>Notes</b> No Summer courses are offered for this program. These courses are generally delivered through the INTO Marshall Center and are for Pathway students only.			
Accelerated Pathway - 1 Semester	Degree Program Components			
Fall: August 17, 2016 Spring: January 5, 2017	36 credit hour program 9 credit hours apply from Pathway 27 credit hours remaining toward degree			
<b>Entry Requirements</b> <ul style="list-style-type: none"> <li>Bachelor's degree in Natural Science (e.g., Biology, Chemistry, Physics, Geology)</li> <li>2.25 undergraduate GPA</li> <li>Language requirement:                             <ul style="list-style-type: none"> <li>TOEFL iBT 80 <b>or</b></li> <li>IELTS 6.5 <b>or</b></li> </ul> </li> <li>Completion of Academic English Level 6 with no grades below B</li> </ul>	<b>Semester 1</b>	<b>Course Title</b>	<b>Credit Hours</b>	
	ENG 160	Academic Composition and Culture	6	
	SFT 540	Industrial Fire Protection	3	
	SFT 630	Current Literature and Research in Occupational Safety	3	
	ES 514 <b>OR</b> SFT 533	Environmental Risk Assessment <b>OR</b> International Safety	3	
	<b>Total</b>			<b>15</b>

# Graduate Pathway Programs

Master of Science in Sport Administration			
Standard Pathway - 2 Semesters	Degree Program Components		Program Information
Fall: August 17, 2016 Spring: January 5, 2017 Summer: May 11, 2017	36 credit hour program 12 credit hours apply from Pathway 24 credit hours remaining toward degree		
<b>Entry Requirements</b>	<b>Semester 1</b>	<b>Course Title</b>	<b>Credit Hours</b>
<ul style="list-style-type: none"> <li>Bachelor's degree</li> <li>2.25 undergraduate GPA</li> <li>Language requirement:               <ul style="list-style-type: none"> <li>TOEFL iBT 70-79 or</li> <li>IELTS 6.0 or</li> <li>Password Overall Level 7 or</li> <li>PTEA 48 or</li> <li>Completion of Academic English Level 5 with no grades below C</li> </ul> </li> </ul>	<b>ENG 150</b> Academic Listening and Speaking <b>ENG 151</b> Academic Reading ESS 516 Planning and Developing HPER and Athletic Facilities ESS 652 Organizational Behavior of Sport and Leisure Industry	3 3 3 3	<b>Progression Requirements</b> <ul style="list-style-type: none"> <li>Minimum 3.0 GPA in graduate level courses</li> <li>No grades below B in all 500/600 level courses</li> <li>No grades below C in ENG 150, 151 and 160</li> <li>No I grades</li> <li>GRE on file</li> </ul> These courses are generally delivered through the INTO Marshall Center and are for Pathway students only.
	<b>Total</b>		
	<b>Semester 2</b>	<b>Course Title</b>	<b>Credit Hours</b>
	<b>ENG 160</b>	<b>Academic Composition and Culture</b>	<b>6</b>
	Variable	Choose Statistics course with advisor	3
	Variable	Choose course with advisor	3
	<b>Total</b>		<b>12</b>
Accelerated Pathway - 1 Semester	Degree Program Components		
Fall: August 17, 2016 Spring: January 5, 2017 Summer: May 11, 2017	36 credit hour program 9 credit hours apply from Pathway 27 credit hours remaining toward degree		
<b>Entry Requirements</b>	<b>Semester 1</b>	<b>Course Title</b>	<b>Credit Hours</b>
<ul style="list-style-type: none"> <li>Bachelor's degree</li> <li>2.25 undergraduate GPA</li> <li>Language requirement:               <ul style="list-style-type: none"> <li>TOEFL iBT 80 or</li> <li>IELTS 6.5 or</li> <li>Completion of Academic English Level 6 with no grades below B</li> </ul> </li> </ul>	<b>ENG 160</b> Academic Composition and Culture ESS 516 Planning & Developing HPER and Athletic Facilities ESS 652 Organizational Behavior of Sport and Leisure Industry ESS 575 Seminar in Sports Management and Marketing	6 3 3 3	
	<b>Total</b>		<b>15</b>
Master of Science in Technology Management			
Standard Pathway - 2 Semesters	Degree Program Components		Program Information
Fall: August 17, 2016 Spring: January 5, 2017	36 credit hour program 12 credit hours apply from Pathway 24 credit hours remaining toward degree		
<b>Entry Requirements</b>	<b>Semester 1</b>	<b>Course Title</b>	<b>Credit Hours</b>
<ul style="list-style-type: none"> <li>Bachelor's degree</li> <li>2.25 undergraduate GPA</li> <li>Language requirement:               <ul style="list-style-type: none"> <li>TOEFL iBT 70-79 or</li> <li>IELTS 6.0 or</li> <li>Password Overall Level 7 or</li> <li>PTEA 48 or</li> <li>Completion of Academic English Level 5 with no grades below C</li> </ul> </li> </ul>	<b>ENG 150</b> Academic Listening and Speaking <b>ENG 151</b> Academic Reading TM 610 Technology and Innovation Management TM 620 Technology Planning	3 3 3 3	<b>Progression Requirements</b> <ul style="list-style-type: none"> <li>Minimum 3.0 GPA in graduate level courses</li> <li>No grades below B in all 500/600 level courses</li> <li>No grades below C in ENG 150, 151 and 160</li> <li>No I grades</li> </ul> <b>Notes</b> Some courses may be offered virtually or on the South Charleston campus. No Summer courses are offered for this program. These courses are generally delivered through the INTO Marshall Center and are for Pathway students only.
	<b>Total</b>		
	<b>Semester 2</b>	<b>Course Title</b>	<b>Credit Hours</b>
	<b>ENG 160</b>	<b>Academic Composition and Culture</b>	<b>6</b>
	TM 612	Economic and Financial Analysis	3
	TM 630	Quality and Productivity Measures	3
	<b>Total</b>		<b>12</b>
Accelerated Pathway - 1 Semester	Degree Program Components		
Fall: August 17, 2016 Spring: January 5, 2017	36 credit hour program 9 credit hours apply from Pathway 27 credit hours remaining toward degree		
<b>Entry Requirements</b>	<b>Semester 1</b>	<b>Course Title</b>	<b>Credit Hours</b>
<ul style="list-style-type: none"> <li>Bachelor's degree</li> <li>2.25 undergraduate GPA</li> <li>Language requirement:               <ul style="list-style-type: none"> <li>TOEFL iBT 80 or</li> <li>IELTS 6.5 or</li> <li>Completion of Academic English Level 6 with no grades below B</li> </ul> </li> </ul>	<b>ENG 160</b> Academic Composition and Culture TM 610 Technology and Innovation Management TM 620 Technology Planning EM 660 Project Management	6 3 3 3	
	<b>Total</b>		<b>15</b>



"I love the atmosphere at INTO Marshall. The teachers really prepare us for our future studies in the university. They always have something interesting for us and every class is different. It's really helpful for students."

Anastasia Semenchenko, Russia



**Spring 2014**  
Arrived at Marshall University for Academic English

**Spring 2015**  
Completed Academic English, progressed to Undergraduate Pathway in Science

**Fall 2015**  
Progressed to science degree program



At INTO Marshall, students have choices. Students choose from a range of programs designed to develop their English language abilities and promote academic, professional and personal success, with ample opportunities to explore American culture outside the classroom.

Improve your English in a safe and welcoming American community



Achieve language skills to advance to Pathways and direct admission and earn your degree

# English Language Program



Utilize INTO Marshall's Learning Resource Center for state-of-the-art technology and resources to improve English language skills

Learn English in the US while enjoying the real American college experience in beautiful West Virginia

# Academic English

## Program Description

The Academic English program at INTO Marshall prepares international students for university study in the US. This academically rigorous program provides international students with high-quality English language instruction and the academic skills to succeed at Marshall through development of:

- Listening
- Speaking
- Reading
- Writing
- Critical thinking
- Academic study skills

## Program Highlights

- Intensive English instruction to prepare for university study
- Academic advising and support throughout the program
- Small classes generally do not exceed 16 students
- Highly trained and experienced instructors
- Integrated projects incorporating real-world skills
- Choice of electives. Past electives include: Cooking in English, English for the Workplace, Dialect Coaching, Appalachian Culture, Gardening in English, Creative Writing, Music and Drama
- Conversation Partners Program
- Integrated access to all university facilities and events

## Program Outcomes

After finishing this intensive program, successful students will be able to:

- Interact comfortably in the US classroom with professors and fellow students
- Understand US values in an academic setting
- Present their spoken and written ideas accurately and effectively in English
- Write research papers with proper use of citations and references
- Use the internet and Marshall library databases to conduct academic research
- Read, understand and critically evaluate academic texts
- Understand and use vocabulary common to academic disciplines
- Take useful and accurate notes in academic lectures and presentations
- Develop and deliver oral presentations

## Key Program Facts

### Start Dates\*

- August 16, 2016
- January 4, 2017
- May 10, 2017

\* All start dates are approximate and subject to change. Final dates will be announced at least six months prior to start date. Students must arrive at least one day prior to the start dates.

### Program Duration

- Fall and Spring semesters are 15-16 weeks
- Summer semester is 12-13 weeks
- 3 terms per year
- Minimum enrollment of one semester

### Academic Entry Requirement

- High school diploma

### English Language Entry Requirement

- None; students will be assessed and placed upon arrival.

### Age Requirement

- Minimum age 17

### Program Structure

- 6 levels of instruction
- Fall and Spring semesters include 20 hours per week of instruction; three core courses (Speaking/Listening, Reading/Vocabulary, Writing/Grammar) and choice of elective
- Summer semester includes 25 hours per week of instruction

### Progression Requirements from Academic English

#### To Undergraduate Standard Pathway

- Completion of Academic English Level 4 with no grades below C at that level

#### To Undergraduate Accelerated Pathway

- Completion of Academic English Level 6 with no grades below C at that level

#### To Direct Undergraduate Admission

- Completion of Academic English Level 6 with no grades below C at that level

#### To Graduate Standard Pathway

- Completion of Academic English Level 5 with no grades below C at that level

#### To Graduate Accelerated Pathway

- Completion of Academic English Level 6 with no grades below B at that level

#### To Direct Graduate Admission

- Completion of Academic English Level 6 with no grade below B, although individual program entry requirements may vary

# General English

## Program Description

The General English program consists of four-week sessions designed for students of all levels of English who want to develop communication skills in many social and professional situations while also learning about American culture.

## Program Highlights

- English instruction for personal or professional motives
- Flexible entry dates
- Access to all Marshall campus facilities and events
- Academic advising throughout the program
- Small classes generally do not exceed 16 students
- Opportunity to interact with native speakers

## Experience University Like an American Student

General English students have access to all the same resources and amenities as all other university students including:

- Access to Marshall recreation center
- Access to Marshall libraries
- Participation in Marshall clubs and activities
- Free tickets to Marshall athletic events
- Use of a fully equipped learning resource center with state-of-the-art technology
- Access to the student health center, counseling and psychological services, and other student welfare resources on campus

## Program Outcomes

The General English program allows students to tailor their program to suit their academic, professional and personal goals. General English students will be able to:

- Improve general language proficiency in listening, speaking, vocabulary, reading and writing
- Expand career prospects by improving English language proficiency
- Develop conversation skills for real-world situations such as greeting, initiating a conversation, turn-taking, interrupting and asking for information
- Understand basic cultural values and behaviors of Americans in order to interact appropriately
- Continue to Academic English for further study at Marshall

## Key Program Facts

### Start Dates\*

- August 16, 2016
- September 22, 2016
- October 27, 2016
- January 4, 2017
- February 9, 2017
- March 23, 2017
- May 10, 2017
- June 12, 2017
- July 10, 2017

\* All start dates are approximate and subject to change. Final dates will be announced at least six months prior to start date. Students must arrive at least one day prior to the start dates.

### Program Duration

- 4-10 weeks
- Maximum two sessions

### English Language Entry Requirement

- None; students will be assessed and placed upon arrival.

### Age Requirement

- Minimum age 17

### Levels

- Mixed level classes

### Program Structure

- Courses cover English language and US culture
- 20 hours per week



Personalized services  
help students succeed  
in coursework and  
personal growth

# Student Life

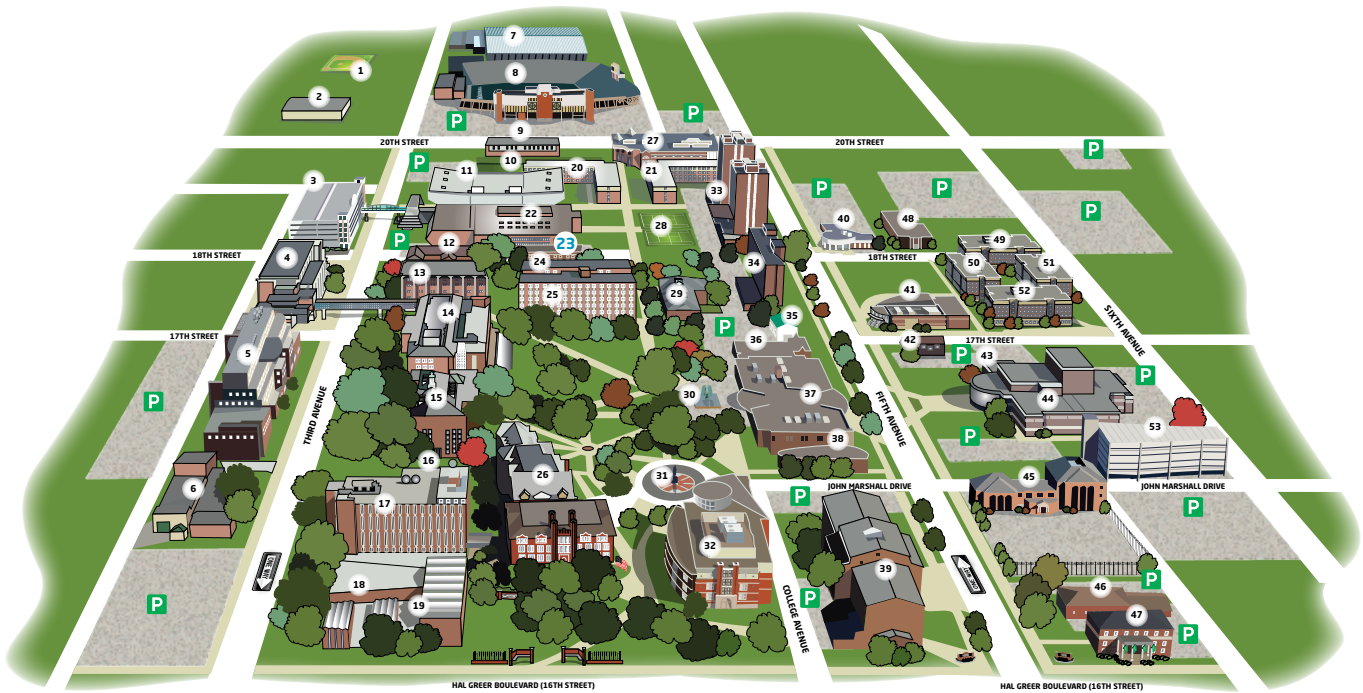




Involvement is key to getting the most out of the college experience. With more than 200 student organizations, Marshall provides ample opportunities for students with nearly any interest to get involved on campus.



Marshall's Career Services office helps students combine passion, strength and skill into a career bringing both success and satisfaction



1. Dot Hicks Field
2. Art Warehouse=AW
3. Third Avenue Parking Garage
4. Robert C. Byrd Biotechnology Science Building=BBSC
5. Arthur Weisberg Family Applied Engineering Complex =WAEC
6. Arthur Weisberg Family Engineering Laboratories=EL
7. Chris Cline Athletic Complex
8. Joan C. Edwards Stadium
9. Sorrell Maintenance Building
10. Multipurpose Field
11. Cam Henderson Center=HC
12. Laidley Hall=LA
13. Harris Hall=HH
14. Science Building=S
15. Morrow Library=ML
16. Communications Building=CB
17. Smith Hall=SH
18. Birke Art Gallery
19. Smith Music Hall=SM
20. Freshman North Residence Hall=FN
21. Freshman South Residence Hall=FS
22. Gullickson Hall=GH
- 23. East Hall (INTO Marshall Center)=EH**
24. Prichard Hall=PH
25. Buskirk Hall = BU
26. Old Main=OM
27. Recreation Center=RC
28. Brian D. Fox Tennis Center
29. Jenkins Hall=JH
30. Memorial Fountain
31. John Marshall Statue
32. Drinko Library=DL
33. Twin Towers=TT
34. Holderby Hall=HY
35. One Room Schoolhouse
36. Campus Christian Center
37. Memorial Student Center=MSC
38. Campus Bookstore
39. Corbly Hall=CH
40. Bliss Charles Public Safety Building
41. Harless Dining Hall
42. Career Services Center
43. Jomie Jazz Center=JJ
44. Joan C. Edwards Performing Arts Center=PAC
45. Foundation Hall/Erickson Alumni Center
46. Marshall Newman Center
47. Joseph M. Gillette Welcome Center
48. Wilber E. Myers Hall
49. Marshall Commons (Gibson Hall)=MC
50. Marshall Commons (Willis Hall)=MC
51. Marshall Commons (Wellman Hall)=MC
52. Marshall Commons (Haymaker Hall)=MC
53. Sixth Avenue Parking Facility



▼ Students enjoy the Marshall Visual Arts Center, just six blocks from campus in downtown Huntington.



# Academic Resources

Marshall University offers international students a great education and a supportive academic and social experience. In addition to its world-class faculty, the university helps students outside the classroom by providing a wide variety of academic services and resources.

## Library

### [marshall.edu/library](http://marshall.edu/library)

The Drinko Library is the main study library on campus with a 24-hour Study Center accessible by student ID card. The entire library is open on Sunday from 1 pm to 11 pm; Monday through Thursday from 7:30 am to 11 pm; Friday from 7:30 am to 6 pm; and Saturday from 10 am to 6 pm.

Drinko has a full range of traditional library services with new computers and advanced technological education facilities including multimedia training and presentation rooms, workstations, study rooms, conference collaboration rooms and an auditorium. There is a 24-hour reading room/computer lab with computer consultation stations and assistive technology.

The Morrow Library houses three significant collections for the university: Government Documents, Morrow Stacks and Special Collections. Morrow Stacks contain approximately two thirds of the campus' book collection. Morrow Library also has university archives and provides free access to a wide variety of US government publications. In addition, the university's Testing Center is located on the ground floor.

## Student Resource Center

### [marshall.edu/src](http://marshall.edu/src)

Located on the second floor of the Memorial Student Center, the Student Success Specialists in the Student Resource Center are available to answer questions about basic academic advising, financial aid, choosing a major, career services and more. They also provide student workshops about time and financial management, study skills and stress management.

## Global Study Lounge

### [marshall.edu/cip/gsl](http://marshall.edu/cip/gsl)

Located on the third floor of Old Main, the lounge is a comfortable and welcoming environment for students of all nationalities. Whether students want a comfortable place to study, meet in conversation groups or participate in a globally focused student organization, the Global Study Lounge is the place to go. Students can also share insights with domestic students who are inquiring at the Office of Study Abroad advising center.

## Tutoring Center

### [marshall.edu/uc/tutoring-services](http://marshall.edu/uc/tutoring-services)

Located in Laidley Hall, the Tutoring Center provides both drop-in and appointment tutoring in all subject areas. If students are having difficulty with an assignment, they can speak with a tutor right away. However, if students want to have regular meetings with a tutor, they can schedule up to two hours of tutoring per week in a subject. All tutors are upper-level students who have successfully completed the course areas in which they tutor.

## Writing Center

### [marshall.edu/writingcenter](http://marshall.edu/writingcenter)

Students needing assistance with writing assignments from any course can get help from the Writing Center. Offering both face-to-face and online support, the student tutors in the Writing Center will help with all stages of the writing process, from brainstorming and outlining to research documentation and revising. Appointments for in-person sessions are encouraged, but students can also drop in and receive help if tutors are available at that time.

## Mathematics Tutoring Lab

### [marshall.edu/math/tutoringlab.asp](http://marshall.edu/math/tutoringlab.asp)

From introductory courses to advanced levels of calculus, the Mathematics Tutoring Lab is dedicated to helping students with their math classes. No appointment is necessary. If students are struggling with a homework assignment or notes from the previous day's lecture, they can simply walk in to the lab and a student tutor will work with them.

▼ Campus offers ample space for students to study with classmates.



▼ Student Health services are available while classes are in session.



The basement of the MSC has a recreation area where students can play ping pong, billiards and spend time with friends

The MSC food court gives students on-campus options in addition to the buffet-style dining halls

# University Services

Marshall University offers a variety of programs, services and facilities to provide international students with an unrivaled study experience.

## **Marshall Memorial Student Center** **marshall.edu/msc**

The Marshall Memorial Student Center is the hub of student life on campus. It includes the Student Resource Center, Marshall Bookstore, a computer lab, several restaurants, Starbucks, the student ID office and an electronic post office. Wireless internet is available throughout the building, as is comfortable seating near a fireplace for studying or lounging with friends. Outside of the MSC is the iconic Memorial Fountain, which stands in memory of the 1970 Marshall University football team, staff and community members who perished in a tragic airplane crash.

## **The Office of Intercultural Affairs** **marshall.edu/multicultural**

The Office of Intercultural Affairs incorporates a student-centered approach that strives to connect, engage and inspire Marshall University students through a creative array of progressive educational programs and experiences that promote academic success and the building of a diverse community of respect, learning and inclusion. Intercultural Affairs is designed to create a campus culture and learning experiences to prepare our students to live, learn and work as successfully as possible in our global society.

## **Student Advocacy** **marshall.edu/student-affairs**

The Office of Student Advocacy works to ensure that all students are treated fairly and equitably within all areas of the university. They assist students in understanding the various policies and procedures within the university such as academic appeals, judicial appeals, grievances, mediation and other areas. The office also helps students by referring them to the proper person or office to assist them in a given situation, and when appropriate, assists in negotiations or other aspects of problem solving.

## **Women's Center** **marshall.edu/wcenter**

The Women's Center is committed to being a multicultural, affirming resource through which women of varying race, ethnicity, sexual orientation, religion, ability and chronological age are encouraged to seek out services and participate in programs and events. The center organizes events of interest to women and men such as discussion groups, speaker series, workshops, festivals and films. The center also maintains a resource library with information about safety and women's health issues.

## **Student Health Service** **marshall.edu/studenthealth**

The Student Health Service provides students with health care services for acute illnesses. The Student Health facilities are located at Cabell Huntington Hospital. Transportation is provided for students to the Student Health facilities free of charge by the Cabell Huntington Hospital shuttle. Student Health Service hours are from 8 am to 10:45 am and 1 pm to 4 pm Monday through Friday when classes are in session. Students may see a doctor without an appointment, but an appointment is highly recommended to avoid lengthy wait times.

## **Student Counseling Center** **marshall.edu/counseling**

The Student Counseling Center is available to help students during any difficult period while at Marshall University. The center is open Monday through Friday 8 am to 5 pm. Walk-in hours are available from 1 pm to 4 pm when classes are in session for the Fall and Spring semesters. During walk-in hours, students are seen on a first-come, first-served basis. Evening hours are available by appointment.

The Office of Intercultural Affairs hosts various events throughout the year to educate students about different cultures



For more information, visit:  
[intohigher.com/marshall](http://intohigher.com/marshall)



▼ Student workers at the INTO Marshall front desk help students.

▼ The LRC is a valuable resource to enhance learning.



Previous trips and activities hosted by INTO Marshall include visiting amusement parks, shopping malls, a local farm and more

INTO Marshall's LRC offers study materials to help students improve their English skills outside the classroom

# INTO Marshall Student Services

Whether a student is joining INTO Marshall to achieve academic, professional or personal goals, our dedicated team of instructors, staff and administrators is committed to helping each and every student succeed.

## Student Services Team

The INTO Marshall Student Services team provides a range of programs and services promoting social, personal and academic well-being. The team will help students settle in to life in Huntington, provide social opportunities and a variety of resources tailored to the specific needs of international students. Whether it's a question about making an appointment with a doctor, finding a place to live, renewing a visa or anything else, there will always be someone available to help.

## Orientation Program

Orientation involves a variety of important events that prepare students to be successful at Marshall, including information about maintaining visa status, registering for Marshall classes, health requirements and insurance coverage. Attendance at the International Student Orientation is required of all students.

Other important activities during Orientation include: opening a Marshall email account, getting a Marshall ID card, learning about Marshall community expectations and taking a tour of the Huntington campus. It's also a great time to make new international and American friends, and attend the many social events planned on campus.

## Visa and Immigration Support

Upon arrival, the Office of International Students and Scholars at the Center for International Programs, in conjunction with the INTO Marshall Student Services team, will provide information, support and guidance on maintaining immigration status while in the US. This can include questions about renewing a student visa, making sure the I-20 or DS-2019 is always current, bringing dependents, employment, traveling and more. They will issue any documentation needed to support the visa application. Students needing further assistance can make an appointment with an advisor at International Student Advising and Services. Workshops occur throughout the year on topics such as employment, scholarships and travel.

## Learning Resource Center

All INTO Marshall students have access to tutoring services through the Learning Resource Center. The LRC is staffed with INTO Marshall instructors and Graduate Assistants. There are one-on-one appointments available by request as well as walk-in hours.

The LRC also has available grammar, vocabulary and pronunciation software, computers, DVDs and text materials such as novels, graded readers, language development books and popular and academic magazines. These resources are free to students in INTO Marshall programs.

## Conversation Partners Program

There are countless opportunities to practice spoken English and meet American students while at INTO Marshall.

One-on-one and small group conversation partners are available for all types of students on a first-come, first-served basis. Additionally, INTO Marshall Student Services keeps students informed about events, activities and volunteer opportunities on campus and in the Huntington community.

## Language Advisors

Language advisors at the INTO Marshall Center are available to assist new and prospective students and parents who may not be able to communicate effectively in English.

## Trips and Activities

While the main reason for coming to Marshall is to study, social activities will help students adjust to life in the US and allow them to develop a network of friends to make their stay more enjoyable. Marshall offers a wide variety of options for socializing, experiencing the arts and taking part in sports. INTO Marshall also organizes many trips and activities designed to help students make the most of their time in the US. From whitewater rafting to snowboarding, students at INTO Marshall experience all the fun, beauty and excitement that West Virginia has to offer.

# 95%

of students polled said they enjoyed their Orientation and first week at INTO Marshall (2014)



For more information, visit:  
[intohigher.com/marshall](http://intohigher.com/marshall)

▼ Tuition includes a membership to the Campus Recreation Center.



▼ Marshall's football team, The Thundering Herd, competes at the highest level of college sports, NCAA Division 1, in Conference USA.





# Sports and Recreation

Students looking for sports excitement will find it at Marshall. The Thundering Herd has been thrilling fans since its first football game in 1895. Whether cheering for one of our intercollegiate teams or playing club rugby or lacrosse, there are recreational options for all students. Access to sporting events is free with student ID.

## Intercollegiate and Club Sports

The university is proud to have nearly 400 student-athletes participating in the highest level of college sports, NCAA Division I, in Conference USA. Athlete selection and scholarships are determined by the university coaching staffs and are highly competitive. NCAA eligibility rules apply.

### Men's Teams

- Baseball
- Basketball
- Cross country
- Football
- Golf
- Soccer

### Women's Teams

- Basketball
- Cross country
- Golf
- Soccer
- Softball
- Swimming and diving
- Tennis
- Track and field
- Volleyball

Spirit Groups entertain sports fans and promote school spirit. Groups include:

- Cheerleading
- Dance team
- Marching Thunder marching band
- Marshall Maniacs student athletic spirit club
- Pep band

Club Sports allow students to compete against other teams without the high level of commitment required on intercollegiate teams. Club Sports include:

- Cycling
- Dodgeball
- Equestrian
- Men's and Women's Lacrosse
- Men's and Women's Rugby

## Campus Recreation

The Marshall Recreation Center offers a wide variety of activities for all fitness levels. Whether starting the day with a morning swim, relieving stress during mid-term exams with a high intensity aerobics class or relaxing at the end of the day with a yoga session, the Marshall Recreation Center has a program to suit a healthy lifestyle. Access is free to Marshall students, but special fees may apply for some activities and resources. The 11,400-square meter facility includes:

- Courts for basketball, volleyball, badminton and dodgeball
- Group fitness classes
- Outdoor Pursuits Center with a 3.25-meter climbing wall and bouldering area
- An indoor aquatics center with three lap lanes, a leisure swim area, a vortex pool and 20-person spa
- Men's and women's locker rooms, and a separate family changing room equipped with lockers
- A large area equipped with free weights and cardio equipment
- Four group exercise studios
- A three-lane indoor running track overlooking the first floor of the facility
- Massage therapy
- Lobby with pro shop and lounge area
- An outdoor pool deck
- Personal training and nutrition consulting services
- Accessibility for persons with disabilities

## Outdoor Pursuits

The Outdoor Pursuits Center provides challenging, fun and educational programs that teach outdoor skills, teamwork and self-confidence, encourage personal growth and enable participants to stay fit. The center includes an indoor climbing facility, gear rentals and team building programs. Students can rent outdoor recreation equipment for use in the forests, mountains, rivers and parks near campus and across West Virginia.

## Student Clubs and Organizations

Marshall has something for everyone with more than 200 clubs and organizations. Students can learn about other cultures, perform community service or start a new organization of their own. All it takes is 10 interested students and a faculty advisor.

Clubs and organizations include:

- Aikido Club
- Alpha Kappa Psi
- American Society of Civil Engineers
- Amnesty International
- Buddhism and East Asian Spiritual Interest
- Campus Activities Board
- Chinese Students and Scholars Association
- Indian Student Association
- Japan Club
- Marshall Interfaith Circle
- Muslim Student Association
- Organization of African Students
- Oulim Marshall University Korean Club
- Outdoor Adventure Club
- Saudi Students Organization
- Vietnamese Student Association

# On-campus Housing

Campus living at Marshall University is more than just a room in a residence hall. It's a place where students can study, learn, meet new people and enjoy activities. Marshall's 10 residence halls provide activities, services and facilities designed to enhance the student's campus living experience—a home away from home.

## Living on Campus

Undergraduate Pathway and Academic English students are required to live on campus for their first two consecutive years. General English and Graduate Pathway students may live in the residence halls if space is available.

Marshall University requires all freshman and sophomore students enrolled for 12 or more credit hours to reside in the residence halls and participate in a meal plan. This excludes summer sessions and is applicable until the student attains junior academic standing (60 credit hours), reaches age 21, has graduated from high school two or more years prior to the current academic year, or an exemption is granted by the Office of Housing and Residence Life.

To best enhance the student experience, every attempt will be made to house INTO Marshall students with American roommates. This allows students to better integrate into American society and practice their English language skills.

## Residence Hall Communities

Living in Marshall's residence halls provides students a variety of resources and a support structure beyond the classroom.

**Academic Success:** Students living on campus typically achieve higher grade point averages than students who live off campus.

**Connections:** Residence halls host a variety of educational and social activities with the goal of building connections among students, their peers, the institution and the greater Huntington community.

**Diversity:** Each residence hall is a diverse, multicultural community of different backgrounds, beliefs and orientations where students can learn from one another in an inclusive and open environment.

**Guidance and Support:** Residence hall staff is available 24 hours per day to help guide students personally and academically.

**Leadership:** Opportunities for involvement include Hall Council, the Residence Hall Association and Student Security.

**Living Green:** All residence halls are committed to recycling and other sustainable practices.

## Safety and Security

The safety and security of Marshall students is a top priority. Exterior building doors are monitored by an online electronic access control system 24 hours per day. Each residence hall has a front desk that is staffed around the clock. Guests must check in with desk staff before entry. Marshall police officers routinely patrol all areas.

Housing at Marshall University is not guaranteed and rooms are assigned on a first-come, first-served basis. Every effort is made to provide students with their first choice in housing; however, early application will increase the likelihood of placement in desired locations.

To view housing options and more, visit: [marshall.edu/housing](http://marshall.edu/housing)



"Living in on-campus housing was the main way I made friends when I first arrived in Huntington. It helped me to meet many people from both Marshall University and INTO Marshall. There are many places to hang out with friends, play pool or ping pong and more. It also helped my time management since I was close to all my classes, making my grades very high."

**Kasun Wijayagurusinghe, Sri Lanka**

Undergraduate Business Pathway

Accounting Major

# Types of On-campus Housing

Undergraduate Pathway and Academic English students are required to live on campus for their first two consecutive years.

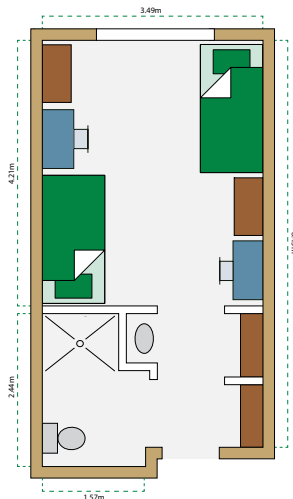
## Residence Hall Descriptions

**The First-year Residence Halls** are four-story buildings designated for freshman students. The halls are co-ed with double occupancy rooms. Each room is equipped with air conditioning, basic cable, high-speed internet and a semi-private bathroom. Each building has a theater room, kitchenette, recreation lounges including pool and table tennis, study lounges, classrooms and apartments for faculty-in-residence and full-time professional staff. FYRH also houses five learning communities for the Colleges of Health Professions, Honors, Business, Science and Education. Students are required to be under 21 years of age to reside in the First-year Residence Halls.

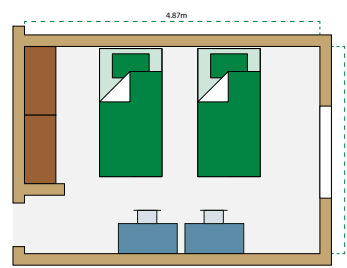
**Twin Towers** are two 15-story, co-ed residence halls housing a variety of students in both double and single occupancy rooms. The facilities include laundry rooms, microwaves and one kitchen per residence hall. A recreation area and 24-hour reception desk are located in the first floor of each lobby. Each room has air conditioning, basic cable and high-speed internet. Twin Towers are home to Freshman Interest Groups, and are conveniently located on either side of Marshall's newest dining facility, Towers Marketplace.

**The Commons** (Gibson, Wellman, Willis and Haymaker Halls) are suite-style, co-ed residence halls. Room options include four-person single bedroom suites, and four-person and eight-person double bedroom suites. The Commons include laundry rooms and a recreation area located on the first floor of each building. Each suite is equipped with air conditioning, basic cable, high-speed internet, a bathroom and a living room.

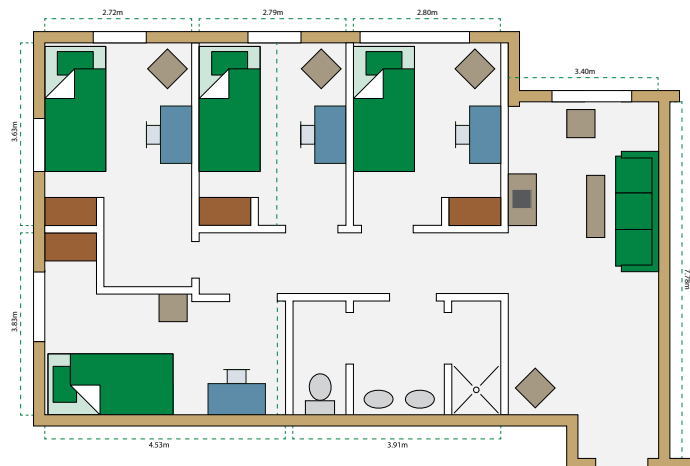
### First-year Residence Hall



### Twin Towers



### The Commons (Gibson, Wellman, Willis and Haymaker)



# 100%

of students reported being satisfied with their living experience at INTO Marshall

# Off-campus Housing

Some students may prefer to live off campus for various reasons, but may not know where to start when finding an apartment in a new country. INTO Marshall has a solution for students who desire off-campus housing. General English and Graduate Pathway students may live in the residence halls if space is available.

## INTO Marshall University Village on Sixth Apartments

INTO Marshall University values offering a variety of housing options for students. In addition to the variety of housing offered on campus, we offer an opportunity for graduate students, and others who are eligible, to live off campus. A partnership with Village on Sixth apartments, located adjacent to Marshall's Huntington campus, provides students high quality off-campus housing with fully furnished four-bedroom apartments within walking distance of campus. Each apartment includes shared common spaces and restrooms, and single, locking private bedrooms.

### Items Provided in Apartments\*

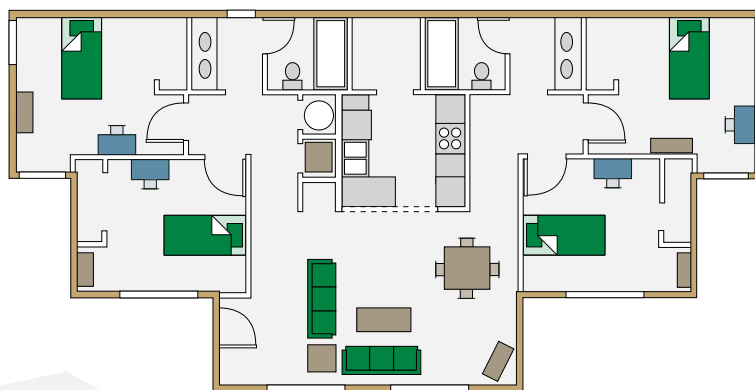
- Furniture: entertainment center, sofa, side chair, dining table and chairs, coffee and end tables. Each bedroom has a full-size bed, dresser, desk and window blinds
- Appliances: dishwasher, garbage disposal, stove, refrigerator, washer and dryer
- Linens: bed sheets, pillow, comforter and bath towels
- Kitchen: utensils, plates, mugs and cutlery; kitchen basics starter kit with soap, garbage bags, sponges and towels
- Utilities and fees: electric (with a monthly cap), water, sewage, cable TV, wi-fi and renter's insurance

All apartments are non-smoking. Complex offers well-lit grounds, resident-controlled heating and cooling, laundry facilities, security, recreation facility, on-site pool and on-site parking. Residents also have 24-hour card access to clubhouse.

\*Amenities, features and utilities are subject to change.

### Apartment Pricing

All students pay for the year in advance. A \$2,000 deposit is due at the time of application and confirmation to the student's program. Full payment, along with a refundable damage deposit, is due four weeks prior to the program start date. Please request an apartment application for exact costs. If tenants vacate the apartment with no damages, the damage deposit will be refunded in full. This is NOT a month-to-month rental. Students are expected to remain in the lease from August 2016 to August 2017. Specific beginning and ending dates will be sent to student upon application confirmation. Students who wish to remain in their apartment for the following year will have a deadline to notify INTO Marshall Housing in March 2016.



Students living in the Village on Sixth apartments have access to all of the complex's amenities

# Dining

All students at INTO Marshall have the opportunity to participate in unlimited meal plans featuring all-you-can-eat, buffet-style dining halls.

## Campus Dining

The benefits of on-campus dining include:

- No need to cook, wash dishes or shop for groceries
- All-you-care-to-eat meals at Towers Marketplace and Harless Dining Hall, including fresh fruit and salad bars, pizza, pasta, Asian cuisine, custom-made deli sandwiches and wraps, vegan and vegetarian options, and many other exciting, chef-created food choices
- No need to carry cash; meal plans are paid via student ID card
- Variety and flexibility: on-campus dining is available from 6:30 am to midnight (operating hours vary by location during summer and break periods)

## Unlimited Meal Plan

The unlimited meal plan allows students living on campus to eat in the dining halls without limitations during academic periods. When classes are in session, students may enter the dining halls as many times as they wish.

This plan also includes FLEX dollars that can be used in locations around campus such as Starbucks or the Memorial Student Center.



## Campus Dining Options

### Towers Marketplace and Harless Dining Hall

Our two dining halls offer all-you-care-to-eat buffets with extensive options. Enjoy home-style cooking, pizza, burgers, international foods, fresh fruit and desserts.

### The Memorial Student Center Food Court

Loaded with choices including Pizza Hut, Chick-fil-A and our own signature brands like Sub Connection and the food court, students have many quick and convenient meal options. The Marshall Student Center also features a Starbucks.

### MU Campus Express

Located behind Holderby Hall, Campus Express is open late on weekdays to give students late-night snack options.

### Commuter Meal Plans

Students who live off campus are still eligible to purchase meal plans through the university. Options include the Unlimited Meal Plan or smaller meal plans based on student needs. These meal plans can be purchased when the student arrives on campus.

## Nutrition and Special Dining Needs

Marshall's dining halls feature halal, kosher, vegan and vegetarian menu options at each meal. Gluten, lactose, nut, soy and shellfish-free options are also available. Students can visit [tomorrowstarts2day.com](http://tomorrowstarts2day.com) with any dietary questions they may have. International food options are available as well.

To view menus and more, visit:

[marshalldining.com](http://marshalldining.com)

## Restaurants on Campus

- Chick-fil-A
- Freshens
- Huntington Market
- Panini's Grill
- Pizza Hut
- Simply To Go
- Starbucks
- Sub Connection
- Ultimate Baja



For more information, visit:  
[intohigher.com/marshall](http://intohigher.com/marshall)

▼ State-of-the-art technology provides hands-on experience that prepares students for the workplace.



# Internships and Working

Being a part of the Marshall community is more than attending class and earning a degree. Students have many available resources to find employment both during and after their studies, as well as internships that are required for some degree programs.

## Work Opportunities

A Marshall education goes beyond classroom learning and hands-on experience to supporting students in their career paths.

## Working while Studying

Many international students would like to work in the US during or after their studies. While this is determined at the discretion of American immigration officers, there are some opportunities to work during and after studies at Marshall and INTO Marshall. International students on an F-1 or J-1 student visa are allowed to work on the Marshall University campus on a part-time basis (20 hours/week or less) while school is in session and full-time (40 hours/week) during breaks, as long as they maintain their F-1/J-1 status. F-1 students may work on campus without any special authorization. J-1 students must get employment authorization in advance from the Center for International Programs (CIP). The INTO Marshall Center also provides a valuable link in the university/ employer network. There are a limited number of on-campus jobs each semester, so on-campus employment is not guaranteed.

## Career Services

[marshall.edu/career-services/aboutStudents9.php](http://marshall.edu/career-services/aboutStudents9.php)

The Office of Career Services helps students combine their passion, strengths and skills into a career that will bring both success and satisfaction. Full-time staff is available to assess career direction, help students develop professionally and assist with a job search during and after their studies.

Services include:

- Career assessment and advising
- Résumé development and revision
- JobTrax Career Management System
- Career expos and individual employer recruiting events
- Mock interviews
- Professional skill development opportunities
- Job search and networking assistance

## INTO Marshall Student Employment

Positions for employment at INTO are available, but are limited and competitive. There are two different positions available within the INTO Marshall Center.

Student Workers are in charge of working at the welcome desk. They answer phones, work directly with other students and help INTO Marshall staff with day-to-day activities such as planning programs, trips and events. Student Workers are paid the US minimum wage and work no more than 20 hours per week.

Student Ambassadors are in charge of arrivals, orientations and reaching out to future students. They help incoming students by answering questions and providing any information needed before the student arrives in West Virginia. Student Ambassador positions are only open to INTO Marshall students who are in Academic English Level 3 or above, or in a Pathway program. They are given a scholarship each semester to help with tuition costs and work three weeks during the summer and during any intake/arrival.

## Marshall Mentor Network

[marshall.edu/career-services/students/mmn.html](http://marshall.edu/career-services/students/mmn.html)

Marshall University works with more than 70 Marshall alumni and other professionals to set up mentoring relationships representing nearly all majors.

## Internships

Marshall University Career Services offers assistance with finding internships. All students are encouraged to pursue an internship opportunity during the time of their studies.

## Working after Graduation

Depending on the type of visa, students may be eligible for Optional Practical Training or Academic Training. These opportunities generally provide work authorization for 12 months after graduation from a degree program. STEM students can apply for a 17-month extension.

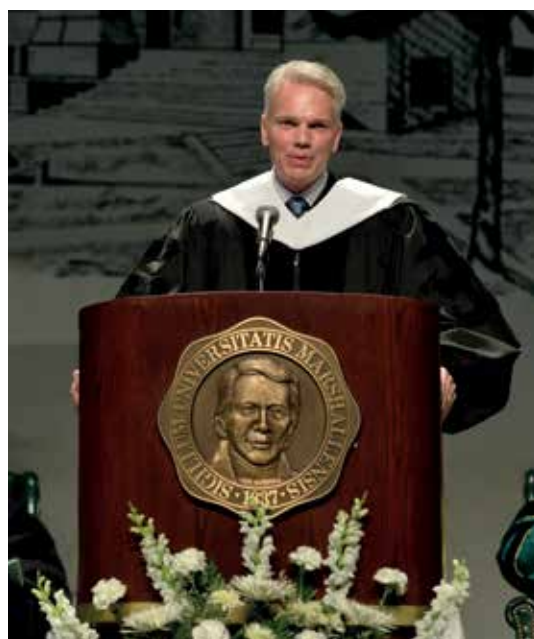
To be eligible for OPT, students must meet the following requirements:

- Be a current student in good academic standing and have maintained F-1 visa status throughout their studies
- Apply for OPT during a vacation period, after finishing a degree or, if they are a graduate student, in the time period between completing all coursework and finishing their thesis or dissertation

Students intending to practice engineering in the US will be required to have their undergraduate transcripts evaluated by the National Council of Examiners for Engineering at their own cost. Visit: [ncees.org/credentials-evaluations](http://ncees.org/credentials-evaluations)



▼ Mike D'Antoni (RBA, 1987), former Herd basketball standout, has served as head coach of the NBA's Los Angeles Lakers, New York Knicks and Phoenix Suns.



▲ Brad Smith (BBA, 1986) is president and CEO of Intuit.



# Alumni and Parents

When a student joins Marshall University, their family does as well. This relationship does not end at graduation. Parents of Marshall students, along with Marshall alumni, are vital parts of the Marshall community.

## We are Marshall

From international business leaders, educators and entrepreneurs to professional athletes, Marshall University has a long list of distinguished alumni.

With more than 105,000 alumni, Marshall University student success can be found in dozens of countries all around the world. Marshall alumni are proudly counted as leaders of some of the world's most influential and profitable companies, coaches and players on professional sports teams and distinguished government statesmen.

The median mid-career salary level of Marshall alumni is \$61,700 and more than half have jobs that make a positive impact on the world around them.

## Successful Alumni

### Verna LeMasters Gibson

First female CEO of a Fortune 500 company  
Former CEO of The Limited/Victoria's Secret/  
Bath and Body Works

### James C. Smith

President and CEO of Thomson Reuters

### F. Selby Wellman

Former Senior VP of CISCO Systems

### Brad Smith

President and CEO of Intuit

### Harvey White

Founder of Qualcomm

### Julia Keller

2005 Pulitzer Prize winner, Chicago Tribune

### Earl Ray Tomblin

Current Governor of West Virginia

### Mike D'Antoni

Former head coach of the Los Angeles Lakers

### Joe Johns

Washington correspondent for CNN

### Chad Pennington

Former NFL quarterback for the  
Miami Dolphins and New York Jets

## Marshall University for Parents

Parents and Family: Welcome to the Marshall University family!

We understand that parents want to be informed and involved as their child embarks on their college journey. When your child becomes a student at Marshall University, you become a member of the Marshall family and we want you to know that you, too, are an important part of your student's success.

We provide the information and resources you need for a rewarding educational experience for your entire family. The Office of Parent Programs at Marshall University offers support, education and information to current and future families of students at Marshall University.

Visit: [marshall.edu/parents](http://marshall.edu/parents)



Apply via the forms  
in this brochure



Apply online at:  
[intohigher.com/marshall/apply](https://intohigher.com/marshall/apply)



7-10 day  
turnaround  
for completed  
applications

# Your Application



Successful applicants receive an offer letter



I-20s are sent within 3 days of confirming enrollment



Study at INTO Marshall University

# INTO Marshall Application Process

## 1. Determine Course of Study

Decide what academic or English language program you want to apply for. Read about INTO Marshall's Pathway and English language programs online at: [intohigher.com/marshall/programs](http://intohigher.com/marshall/programs)

## 2. Check Requirements

Be sure your academic and English proficiency scores meet admission requirements for your program of choice.

Detailed admission requirements can be found at: [intohigher.com/marshall/apply](http://intohigher.com/marshall/apply)

## 3. Apply

To apply for direct admission to Marshall University, visit: [marshall.edu/admissions/international.asp](http://marshall.edu/admissions/international.asp)

To apply to INTO Marshall, visit: [intohigher.com/marshall/apply](http://intohigher.com/marshall/apply)

Submit your INTO Marshall application and required documents to: [INTOapplications@marshall.edu](mailto:INTOapplications@marshall.edu)

## 4. Send Required Documents

The following documents will be needed to complete the application process:

- Transcripts (copies in native and English language)
- Diplomas (copies in native and English language)
- Language proficiency scores, if applicable
- Test scores, if applicable
- Copy of applicant's passport
- Evidence of funding

## 5. Application Processing

We will notify you by email as soon as your application has been received that it has been received, and you may be asked to provide any missing application documents. Your transcripts and other documents must be evaluated, and you will be contacted once an admission decision is made.

## 6. Offer of Admission

If you are accepted, we will send you an offer of admission.

## 7. Confirm

Return your signed acceptance form and pay the required deposit. Once your signed acceptance form and deposit have been received we will send you your I-20 to the shipping address provided.

## 8. Prepare for Arrival

You will receive a Pre-Departure Guide to help prepare you for living and studying in the US.

### Application Checklist for Pathway Programs

Please read carefully and make sure you have included the following documents in your application package:

1. Application form, completed in full (including signature) and checked for accuracy	<input type="checkbox"/>
2. Copy of passport for student (and spouse/dependents, if applicable)	<input type="checkbox"/>
3. Copy of bank statement <b>and</b> Affidavit of Support or letter of sponsorship	<input type="checkbox"/>
4. Copies of high school or university diploma and transcripts (English and native language)	<input type="checkbox"/>
5. Copies of transcripts of all relevant qualifications translated into English as well as in native language	<input type="checkbox"/>
6. Copies of TOEFL/IELTS/PTEA/Password	<input type="checkbox"/>
7. Proof of an adequate alternative insurance policy, if appropriate	<input type="checkbox"/>
8. Copies of visa, I-20 and current DSO information (transfer students)	<input type="checkbox"/>

### Application Checklist for English Programs

Please read carefully and make sure you have included the following documents in your application package:

1. Application form, completed in full (including signature) and checked for accuracy	<input type="checkbox"/>
2. Copy of passport for student (and spouse/dependents, if applicable)	<input type="checkbox"/>
3. Copy of bank statement <b>and</b> Affidavit of Support or letter of sponsorship.	<input type="checkbox"/>
4. Proof of high school/secondary school graduation (Academic English only)	<input type="checkbox"/>
5. Proof of an adequate alternative insurance policy, if appropriate	<input type="checkbox"/>
6. Copies of visa, I-20 and current DSO information (transfer students)	<input type="checkbox"/>

# INTO Marshall Application Form 1 of 3

Please print legibly and complete all relevant sections of this form (including signature) in black ink. Submit your application and required documents to: [intoapplications@marshall.edu](mailto:intoapplications@marshall.edu)

If an education counselor is assisting you with your application, fill out the details below. If not, leave this section blank and go to Section 1.

Company/Organization: \_\_\_\_\_ URN Number: \_\_\_\_\_

### Section 1

#### A. Student Details

Please enter all names exactly as they appear on your passport.

Last/Family Name \_\_\_\_\_

First/Given Name \_\_\_\_\_

Middle Name \_\_\_\_\_

Gender  M  F

Date of Birth \_\_\_\_/\_\_\_\_/\_\_\_\_ mm/dd/yyyy

#### B. Visa and Immigration Information

Country of Birth \_\_\_\_\_

Country of Nationality/Citizenship \_\_\_\_\_

US Residency Status (including dual citizenship)

Non-US Citizen or Non-resident  Permanent Resident  US Citizen

Are you currently living or studying in the United States?  Yes  No

If YES, please include a copy of your visa, I-20 and contact information of your DSO.

Will any of your dependents (spouse/children) come to the US with you?

Yes  No How many? \_\_\_\_\_

If YES, please include copies of their passports with your application.

#### C. Student Permanent Home Country Address

This is the student permanent home country address, it is required for creating the I-20. This address CANNOT be the address of the Education Counselor.

Street \_\_\_\_\_

City \_\_\_\_\_ State/Province \_\_\_\_\_

Country \_\_\_\_\_ Postal Code \_\_\_\_\_

Telephone \_\_\_\_\_

Student Email \_\_\_\_\_

#### D. Shipping Address

This is where the I-20 will be mailed.

Education Counselor/Contact Name \_\_\_\_\_

Street \_\_\_\_\_

City \_\_\_\_\_ State/Province \_\_\_\_\_

Country \_\_\_\_\_ Postal Code \_\_\_\_\_

Telephone \_\_\_\_\_

Contact Email \_\_\_\_\_

### Section 2

#### English Language Program

Please select your intended program of study and a start date. Do not select programs with conflicting dates.

#### Academic English (select all that apply)

August 2016  January 2017  May 2017

#### General English (select all that apply)

August 2016  September 2016  October 2016

January 2017  February 2017  March 2017

May 2017  June 2017  July 2017

### Section 3

#### Academic Programs

##### A. INTO Marshall Undergraduate Pathway Programs

Accelerated (1 Semester)  Standard (2 Semesters)

Please select only one box below. Please note that Accelerated and Standard options have different entry requirements.

	Fall: August 2016	Spring: January 2017	Summer: May 2017
Business Administration	<input type="checkbox"/>	<input type="checkbox"/>	<input type="checkbox"/>
Computer Science	<input type="checkbox"/>	<input type="checkbox"/>	<input type="checkbox"/>
Engineering	<input type="checkbox"/>	<input type="checkbox"/>	<input type="checkbox"/>
General	<input type="checkbox"/>	<input type="checkbox"/>	<input type="checkbox"/>
Integrated Science and Technology	<input type="checkbox"/>	<input type="checkbox"/>	<input type="checkbox"/>
Safety Technology	<input type="checkbox"/>	<input type="checkbox"/>	<input type="checkbox"/>
Science	<input type="checkbox"/>	<input type="checkbox"/>	<input type="checkbox"/>
Visual Arts	<input type="checkbox"/>	<input type="checkbox"/>	<input type="checkbox"/>

Planned Academic Subject/Major: \_\_\_\_\_



# INTO Marshall Application Form 2 of 3

## Section 3 (continued)

### Academic Programs

#### B. INTO Marshall Graduate Pathway Programs

Accelerated (1 Semester)    Standard (2 Semesters)

Please select only one box below. Please note that Accelerated and Standard options have different entry requirements.

	Fall: August 2016	Spring: January 2017	Summer: May 2017
Accountancy with undergraduate Accounting degree	<input type="checkbox"/> <input type="checkbox"/>	<input type="checkbox"/> <input type="checkbox"/>	
Accountancy with undergraduate Business degree	<input type="checkbox"/> <input type="checkbox"/>	<input type="checkbox"/> <input type="checkbox"/>	
Business Administration (MBA)	<input type="checkbox"/> <input type="checkbox"/>	<input type="checkbox"/> <input type="checkbox"/>	<input type="checkbox"/> <input type="checkbox"/>
Computer Science	<input type="checkbox"/> <input type="checkbox"/>	<input type="checkbox"/> <input type="checkbox"/>	
Engineering	<input type="checkbox"/> <input type="checkbox"/>	<input type="checkbox"/> <input type="checkbox"/>	
English (with TESOL emphasis)	<input type="checkbox"/> <input type="checkbox"/>	<input type="checkbox"/> <input type="checkbox"/>	
Environmental Science	<input type="checkbox"/> <input type="checkbox"/>	<input type="checkbox"/> <input type="checkbox"/>	
Exercise Science	<input type="checkbox"/> <input type="checkbox"/>	<input type="checkbox"/> <input type="checkbox"/>	<input type="checkbox"/> <input type="checkbox"/>
Health Care Administration	<input type="checkbox"/> <input type="checkbox"/>	<input type="checkbox"/> <input type="checkbox"/>	
Human Resource Management	<input type="checkbox"/> <input type="checkbox"/>	<input type="checkbox"/> <input type="checkbox"/>	<input type="checkbox"/> <input type="checkbox"/>
Information Systems	<input type="checkbox"/> <input type="checkbox"/>	<input type="checkbox"/> <input type="checkbox"/>	
Mathematics	<input type="checkbox"/> <input type="checkbox"/>	<input type="checkbox"/> <input type="checkbox"/>	
Mechanical Engineering	<input type="checkbox"/> <input type="checkbox"/>	<input type="checkbox"/> <input type="checkbox"/>	
Safety	<input type="checkbox"/> <input type="checkbox"/>	<input type="checkbox"/> <input type="checkbox"/>	
Sport Administration	<input type="checkbox"/> <input type="checkbox"/>	<input type="checkbox"/> <input type="checkbox"/>	<input type="checkbox"/> <input type="checkbox"/>
Technology Management	<input type="checkbox"/> <input type="checkbox"/>	<input type="checkbox"/> <input type="checkbox"/>	

## Section 4

### Student Education History

Please list ALL secondary and post-secondary schools, colleges, or universities you have attended or will attend prior to entering the university, including current studies.

**You must provide a transcript from each, even if you did not complete a term.**

#### A. Secondary Schools/High Schools

**Most recent secondary school attended:**

School Name \_\_\_\_\_

Country \_\_\_\_\_

Start \_\_\_\_/\_\_\_\_/\_\_\_\_ mm/yyyy      End \_\_\_\_/\_\_\_\_/\_\_\_\_ mm/yyyy

School Name \_\_\_\_\_

Country \_\_\_\_\_

Start \_\_\_\_/\_\_\_\_/\_\_\_\_ mm/yyyy      End \_\_\_\_/\_\_\_\_/\_\_\_\_ mm/yyyy

If you have more secondary schools, please submit them in this format on a separate sheet of paper and include with your application.

#### B. Colleges and Universities

**Most recent post-secondary school attended:**

College/University Name \_\_\_\_\_

Country \_\_\_\_\_

Start \_\_\_\_/\_\_\_\_/\_\_\_\_ mm/yyyy      End \_\_\_\_/\_\_\_\_/\_\_\_\_ mm/yyyy

College/University Name \_\_\_\_\_

Country \_\_\_\_\_

Start \_\_\_\_/\_\_\_\_/\_\_\_\_ mm/yyyy      End \_\_\_\_/\_\_\_\_/\_\_\_\_ mm/yyyy

College/University Name \_\_\_\_\_

Country \_\_\_\_\_

Start \_\_\_\_/\_\_\_\_/\_\_\_\_ mm/yyyy      End \_\_\_\_/\_\_\_\_/\_\_\_\_ mm/yyyy

If you have attended or will attend more colleges, universities or post-secondary schools, please submit them in this format on a separate sheet of paper and include with your application.

#### C. Gaps in Study

Will it be more than four (4) months between the time you completed study at your most recent educational institution, and the start of your program at INTO Marshall?

Yes       No

If yes, will you have attended a school, college or university in that time?

Yes       No

Is that school or university indicated on this application or a separate sheet of paper?

Yes       No

## Section 5

### Test Scores

**Please indicate all test scores completed. Copies of test results may be used for evaluation, but official results must be received prior to registration.**

#### A. English Language Test Scores

Language scores are valid for two years after the test date and will be considered expired if over two years old at the time of program start date.

TOEFL       IELTS       PTEA       Password

I do not plan on taking an English language proficiency test.

#### B. Academic Test Scores (scores are valid for 5 years)

**Undergraduate Students**      **Graduate Students**

SAT       ACT       GMAT       GRE

I do not plan on taking an academic test.

# INTO Marshall Application Form 3 of 3

## Section 6

### Housing

#### Accommodations and Student Services

Undergraduate Pathway students and Academic English students intending to progress to an Undergraduate Pathway are required to live in on-campus housing for their first two years. Undergraduate applicants who do not select a housing option will be given the Double Room option.

Graduate students and General English students are encouraged to request on-campus housing and will be placed according to availability. If you do not select a housing option, we will not select one for you. Graduate students who want housing will be given one term of housing and can sign up for additional terms when they arrive.

Please select one option:

- Single room
- Double room
- I would like information regarding off-campus accommodations
- I do not require any accommodations
- General English Students: How many 5-week sessions \_\_\_\_\_

#### Meal Plan Memberships

All students living on campus will be given a meal plan, as described on page 61. Students who live off-campus, but would like a meal plan, may purchase one when they arrive.

## Section 7

### Declarations: Required of all students

#### Disciplinary Action

Are you currently, or have you ever been, charged with or subject to disciplinary action for academic/scholastic (such as plagiarism or cheating) or any other type of behavioral misconduct at any educational institution? You must also disclose academic dismissal, suspension or probation for poor grades.  Yes  No

#### Criminal Conviction

Have you ever been charged with a violation of the law, misdemeanor and/or felony (even if adjudication was withheld) that resulted in, or, if still pending, could result in, probation, community service, restitution, a jail sentence or the revocation or suspension of your driver's license? You are not required to include traffic violations that only resulted in a fine.  Yes  No

If your answer to any of the preceding is YES, details of any offenses should be included on a separate sheet. If your records have been expunged pursuant to applicable law, you are not required to answer YES to these questions. If you are unsure whether to answer "yes", we strongly suggest that you answer YES and fully disclose all incidents. By doing so, you can avoid disciplinary action or revocation of your offer of admission.

## Section 7 (continued)

### Declaration

To be signed by the student and parent, sponsor or legal guardian (if under 18)

I confirm that I have included information on all of my academic studies and will not pursue further study prior to joining this university. Failure to provide this information can result in dismissal from the university.

I agree to pay all tuition and accommodation fees incurred by the student as they become due.

### Signed

Date \_\_\_\_/\_\_\_\_/\_\_\_\_ mm/dd/yyyy

(Student)

Student's Name

(Please Print)

### Students under 18

All students under the age of 18 must have all applications and contracts signed by a parent/guardian or sponsor.

### Signed

Date \_\_\_\_/\_\_\_\_/\_\_\_\_ mm/dd/yyyy

(Parent/Guardian/Sponsor - if student is under 18)

Parent/Guardian/Sponsor Name

(Please Print)

### Authorization for Release of Information

The Family Educational Rights and Privacy Act (FERPA) protects student confidentiality by placing certain restrictions on the disclosure of information contained in a student's education records. By signing below, you agree that Marshall University and INTO Marshall (to the extent it may be covered by FERPA) personnel may provide information from your education records which are necessary to facilitate admissions, enrollment and continued progress through your academic program at Marshall University or INTO Marshall. This authorization specifically permits the sharing of information between Marshall University and INTO Marshall or to any other entity directly responsible for your recruitment or continued participation in the INTO Marshall program. You further acknowledge that: (1) You have the right not to consent to the release of your education records; and (2) this consent shall remain in effect until revoked by you, in writing, and delivered to Marshall University and INTO Marshall, but that any such revocation shall not affect disclosures made prior to the receipt of any such written revocation.

I also authorize my application and application materials for any INTO Marshall program to be considered and reviewed by other INTO University Partnerships Ltd. joint ventures in the United States in the case that my application to INTO Marshall is unsuccessful.

### Travel and Medical Insurance

The full cost of an INTO Marshall Student Health Insurance Plan will be added to the invoice unless proof of adequate alternative coverage, as approved by the Student Health Services, is attached. For further details visit: [intohigher.com/marshall](http://intohigher.com/marshall)

### Terms and Conditions

I state that I have read and understood the INTO Marshall brochure and agree to abide by the 2016-17 Terms and Conditions found online: [intohigher.com/marshall/terms](http://intohigher.com/marshall/terms)

### Signed



# A brighter future for just \$25

We're delighted you are considering INTO Marshall University for your education and look forward to helping you get started on your path to success.

**But did you know there are 57 million children globally not enrolled in school?**

Parents everywhere share a desire to give their children the best possible start in life but, sadly, a basic education is still beyond the reach of many young people around the world.

As part of our commitment to learning, we created INTO Giving, a charity that helps improve both access to and quality of education for young people living in difficult circumstances.

When children go to school and learn, they create opportunities that transform and empower their lives and their communities.

**Donate \$25 today and help provide the education they deserve.**

Every penny of your gift will go straight to the INTO Giving educational projects. Making a gift is easy, simply visit our secure website: [www.into-giving.com](http://www.into-giving.com).

**Help transform lives by supporting our educational projects around the world.**

**INTO** 

**GIVING**



# INTO Marshall University

## Affidavit of Support



I, \_\_\_\_\_ hereby certify that I am willing  
 (Print name of family member/personal sponsor)

and able to provide the amount of \$ \_\_\_\_\_ in US dollars to meet the expenses incurred  
 by \_\_\_\_\_  
 (Print student's full name)

during the length of the student's study to which their application pertains.

My relationship to the student is that of: \_\_\_\_\_. I have authorized the release of my supporting financial documents to verify that the promised financial resources are available to me. I affirm that I know and understand the contents of this affidavit signed by me and that the statements are true and correct.

**Required:**

Signature of family member/personal sponsor: \_\_\_\_\_ Date: \_\_\_\_\_

**Declaration of Finances**

US immigration law requires the University to verify that any student seeking an F-1 Visa has sufficient funds to finance their studies for one academic year of their program, or the entire program if the program is under one year. Please note that during your visa interview you may have to prove sufficient funding for the entirety of your program.

If it is determined that you are admissible to INTO Marshall, we will provide you with an I-20 (F-1) certificate of eligibility document only after you submit satisfactory evidence that you have adequate funds for your proposed program of study. Acceptable financial documents must not have been issued more than six (6) months before the date you intend to enroll at INTO Marshall and must accompany this form

**Additional Support Needed for Dependents**

If you have a spouse or children that will accompany you to the United States, you must include a minimum of an additional \$5,000 USD per year for your spouse and \$5,000 USD per year for each additional dependent. Please note that this estimate for dependents is the minimum amount you must show. If purchasing insurance in the US for dependents, actual costs for your dependents will likely increase.

**Certification of Financial Support**

**Example Sources of Funding and Required Documentation.** All amounts must be in United States currency or show applicable conversion rate.

Source of Funding	Required Documentation
Personal bank statement (checking/savings)	Certified bank letter/bank statement
Parent(s)/sponsor(s)	Affidavit of Support (attached) and certified bank letter/bank statement
Government agency (home country)	Letter of award
Graduate assistantship/fellowship	Letter of award (copy)

For cost estimates for I-20 purposes, visit: [intohigher.com/marshall/funds](http://intohigher.com/marshall/funds)

## Country Scales - Undergraduate Pathway

Country	Marshall Undergraduate Pathway
GCSE/IGCSE/O Levels	2.0/C or better in each of all of the following courses: Language, Social Science, Math, Science and a 5th academic subject
GCE/IGCE/A Levels	2 Ds plus O-level results, (If only 1 A Level, D or higher, if 2 or more A Levels, 2 must be D or higher)
IB	24, or Average grades of 4 or higher, if by individual grades
Azerbaijan	Senior High School Graduation Diploma with minimum 3 out of 5 or 60%
Bahrain	Tawjihya with minimum 50%
Bangladesh	Higher Secondary Certificate with minimum 4 out of 10 or 45%
Brazil	Certificado de Conclusão de Ensino Médio with minimum 6 out of 10 or 60%
Cameroon	See GCE O-levels and A-levels or Upper Secondary with Baccalauréat with minimum 10 out of 20
China	Senior High School Graduation/Completion minimum 60% (4 point scale), 70% (5 point scale).
Colombia	Bachillerato Académico with minimum 6.5 out of 10
France	Baccalauréat de l'enseignement du second with a total average of 10 or higher
Gambia	WAEC with 5 subjects passed with avg. 5.0
Georgia	Sashualo Ganatlebis Atestasi or Sashualo Skolis Atestati with an average of 6 or higher out of 10 or 3 or higher out of 7
Germany	Zeugnis der Allgemeinen Hochschulreife (Abitur) or Zeugnis der Fachhochschulreife with minimum 3.5 out of 6 or 6.5 out of 15.
Hong Kong	HKDSE: Average score of 2 with a minimum of 5 courses completed.
India	Higher Secondary Certificate or the Standard 12 with minimum of 40%, C2 (CBSE), or 6 out of 9 (CISCE)
Indonesia	SMA/STTB with minimum 6 out of 10 or 60%
Italy	Diploma di Licenza Linguistica with avg 6 out of 10 or Diploma di Maturita Classica with minimum 60 out of 100
Japan	Kōtō Gakkō Sotsugyō Shōmei-sho with minimum 3 out of 5.0
Kazakhstan	Senior secondary education with Attestat with minimum 3 out of 5.0
Kenya	KCSE with minimum 6 out of 12
Kuwait	Shahadat-al-thanawia-al-a'ama with minimum 70%
Kyrgyzstan	Certificate of Completed Secondary Education earning an Attestat o Srednem Obrazovanii with minimum 3 out of 5.0
Libya	General or Specialized secondary school with Secondary Education Certificate with minimum 169 out of 260 (Literary) or 214 out of 330 (Science)
Macau	There is no standard scale used in Macau. C average must be calculated in the INTO center.
Malaysia	SPM with minimum 5.0 average (C and D grades) out of 9 or a 2.0 calculated average
Mexico	Diploma/Certificado with an average of 7
Mongolia	School-leaving certificate with average 70%
Myanmar	Higher secondary with 45% average, or 3.5 out of 5.0
Nigeria	WAEC with 5 subjects passed with 7.0 avg
Pakistan	Higher Secondary School Certificate (HSSC) 42% average on a 100% scale
Qatar	Al-Thanawaya Al-Amah with minimum 62% on a 100% scale
Russia	Certificate of Complete Secondary Education (Attestat) with an average of 3 out of 5.0
South Korea	High School with average 70% or average ranking 6 out of 9
Saudi Arabia	Tawjihyah with a 70% average and a Pass in the 3rd year
Singapore	38 or less aggregate score; at least 8 in each of all of the following courses: Language, Social Science, Math, Science and 5th academic subject
South Africa	National Senior Certificate (NSC) with an average of 50%
Spain	Titulo de Bachillerato with a minimum average of 5 out of 10
Taiwan	Senior high school leaving certificate with minimum 60% average
Tanzania	See GCE O-levels or ACSE with minimum E5
Thailand	Maw 6 (M6) and the Certificate of Secondary Education with minimum average of 60%
Turkey	Lise Diplomasi with minimum 55% average or 3 out of 5
Ukraine	Upper secondary with minimum 5 average out of 12 or 3 average out of 5
Uzbekistan	Diploma of Specialised Secondary Education (O'rta Ma'lumot To'g'risida Shahodatnoma) with minimum average of 3 out of 5
Venezuela	Título de Bachiller ("en" track taken) and Certificación de Calificaciones with minimum average of 11 out of 20
Vietnam	Upper secondary with minimum average of 6.0 out of 10
Zimbabwe	C or better in 5 min subjects: Math, Science, Language, Social Science, 5th Academic Subject or a minimum average of 6.0 on a 9.0 scale

This guide is provided by Marshall University Admissions for general reference purposes only. Meeting the requirements listed here does not necessarily indicate that an applicant has met all admission requirements or that an applicant will qualify for admission to Marshall University or INTO Marshall University.

When referring to the following guide, be aware that this is not inclusive of all grading or admission requirements. Grading systems and educational structures vary widely around the world and within countries and we evaluate each application individually to determine if the applicant meets the standards for success at Marshall University. Please also be aware that requirements by country are updated and adjusted appropriately throughout an academic year and might not be current in this brochure. For a more recent list of country evaluation scales and graduate-level scales, please visit our website at: [intohigher.com/marshall/country-scales](http://intohigher.com/marshall/country-scales)

# English Waiver Guidelines

English Waiver Exemptions	Marshall Undergraduate Pathway Program - Standard	Marshall Undergraduate Pathway Program - Accelerated	Marshall Undergraduate Direct Entry
IELTS	5.5 (5 subscores)	6	6
TOEFL	60	78	78
Password	6	No	No
PTEA (Pearson)	44	No	No
IB	English HL: 4	No	No
GCSE/IGCSE/O Levels	English First Language with C or better. Not predicted scores. Qualify for Accelerated.	English First Language with C or better. Not predicted scores.	No
GCE/IGCE/A Levels	English First Language with C or better. Not predicted scores. Qualify for Accelerated.	No	No
US High School	Graduates from US High School, AE is waived and students are eligible for Accelerated Undergraduate Pathways programs. No SAT or ACT scores are required.	Graduates from US High School, AE is waived and students are eligible for Accelerated Undergraduate Pathway programs. No SAT or ACT scores are required.	Graduates from US High School meet direct entry requirements for English Proficiency.
English-Speaking Canadian or American-International High School	English Speaking High School in Canada accepted. International American High School would have to be verified by each individual school.	English Speaking High School in Canada accepted. International American High School would have to be verified by each individual school.	English Speaking High School in Canada accepted. International American High School would have to be verified by each individual school.
SAT	400 Critical Reading or 400 Writing	400 Critical	450 Verbal
ACT	17 English/Reading	17 English/Reading	18 English/Reading
HKDSE	English Level 3 or better	No	No
Ghana WAEC Voucher	Grade C6	No	No
WAEC	Grade C6 Qualify for Accelerated.	Grade C6	No
Australia	Yes	Yes	Yes
Canada, except Quebec (French)	Yes	Yes	Yes
Commonwealth Caribbean (Anglophone), including Antigua, Bahamas, Barbados, Belize, Bermuda, Cayman Islands, Jamaica, Trinidad & Tobago	Yes	Yes	Yes
Irish Republic	Yes	Yes	Yes
New Zealand	Yes	Yes	Yes
United Kingdom (England, Scotland, Ireland, Wales)	Yes	Yes	Yes



# Dates, Tuition and Fees

## Marshall University

Rates are an estimate and subject to change. All prices in US dollars.

**By Academic Year** There are two main semesters per academic year (Fall, Spring), each about 16 weeks long with a shorter Summer semester of 14 weeks.

**Marshall University Tuition and Fees** The following prices are based on 2015-16 Cost of Attendance values and are subject to change.

Cost Description	Tuition and Fees	Housing and Meals	Books and Supplies	Health Insurance	Other	Total Expenses
Undergraduate Direct Admission (24 credits, 12 credits per semester)	\$15,602	\$10,284	\$1,100	\$1,200	\$1,180	\$29,366
Graduate Direct Admission (18 credits, 9 credits per semester)	\$17,058	\$10,284	\$1,100	\$1,200	\$1,240	\$30,882

### Start Dates for Marshall University

Semester	First Day of Classes	Undergraduate Application Deadline	Graduate Application Deadline*	Application Fee
Fall 2016	August 22, 2016	June 15, 2016	June 15, 2016	\$150
Spring 2017	January 9, 2017	October 15, 2016	October 15, 2016	\$150
Summer 2017	May 15, 2017	March 15, 2017	March 15, 2017	\$150

\*Graduate application deadline for specific programs may vary.

For the most current information about Marshall University tuition and fees, visit: [marshall.edu/sfa](http://marshall.edu/sfa)

## Estimated Costs

### Marshall and INTO Marshall Programs

Rates are an estimate and subject to change. All prices in US dollars. Please visit [intohigher.com/marshall/costs](http://intohigher.com/marshall/costs) for more information.

### Estimated Costs of Attendance for 2016-17

Cost Description	Tuition and Fees	Housing and Meals	Books and Supplies	Health Insurance	Other	Total Expenses
Undergraduate Direct Admission (2 Semesters)	\$15,602	\$10,284	\$1,100	\$1,200	\$1,180	\$29,366
Undergraduate Standard Pathway (2 Semesters)	\$20,400	\$13,740	\$1,100	\$1,920	-----	\$37,160
Undergraduate Accelerated Pathway (1 Semester)	\$11,730	\$6,870	\$585	\$960	-----	\$20,145
Graduate Direct Admission (2 Semesters)	\$17,058	\$10,284	\$1,100	\$1,200	\$1,240	\$30,882
Graduate Standard Pathway (2 Semesters)	\$23,400	\$13,740	\$1,100	\$1,920	-----	\$40,160
Graduate Accelerated Pathway (1 Semester)	\$13,500	\$6,870	\$585	\$960	-----	\$21,915
Academic English (1 Semester)	\$5,990	\$6,870	\$585	\$960	-----	\$14,405
General English (4 Weeks)	\$1,860	\$2,640	\$285	\$240	-----	\$5,025

# Dates, Tuition and Fees

## INTO Marshall University

Rates are an estimate and subject to change. All prices in US dollars.

**By Academic Year** There are two main semesters per academic year (Fall, Spring), each about 16 weeks long with a shorter Summer semester of 14 weeks.

Tuition for Academic Programs		
Program	1 Semester (Accelerated Pathway)	2 Semesters (Standard Pathway)
Undergraduate Pathway Program	\$11,730	\$20,400
Graduate Pathway Program	\$13,500	\$23,400

Tuition for Language Programs			
Program	1 Semester	2 Semesters	3 Semesters
Academic English	\$5,990	\$11,980	\$17,970

Housing and Dining Services			
Program	Fall 2016	Spring 2017	Summer 2017
Double Room	\$6,870	\$6,870	\$5,860
Single Room	\$8,800	\$8,800	\$7,730
Off-Campus Apartment, Private Room (12-month contract)	\$9,576 (\$8,840 yearly rent + \$736 refundable damage deposit)		

All on-campus housing options include break periods between semesters if a student is attending the following semester as well as the Unlimited Meal Plan and a \$50 credit to the student's ID card, when dining halls are open. See page 58 for more details.

\*Students who live in off-campus housing may purchase a meal plan but are not required to do so.

### By 4-Week Session

Tuition, Housing and Dining Services for General English (GE)*		
Program	1 Session	2 Sessions
Tuition		
20 hours per week	\$1,860	\$3,720
Housing and Dining**		
Double room	\$2,640	\$5,280

\* GE Program is limited to two sessions. For longer programs students will be placed in Academic English.

\*\* Housing and dining rates are subject to change. General English housing requests are subject to change. INTO Marshall attempts to fulfill room-type requests, however cannot guarantee a specific room type. Any additional days will be charged at the daily rate.

All prices include Unlimited Meal Plan and a \$50 credit to the student's ID card.

Miscellaneous Fees and Expenses 2016-17			
	One Time	Per Academic Term	Per 4-Week Session
International Express Mail	\$100	-----	-----
INTO Insurance (Estimated)	-----	\$960	\$240
Books (Estimated)	-----	\$400-600	\$100-300

### INTO Marshall Scholarships

INTO Marshall scholarships are available for exceptional INTO Marshall Pathway students. Qualifications and amounts vary between regions. For more information on scholarships in your area, please contact your local education counselor or INTO representative.

### INTO Marshall Dates

All dates are tentative and subject to change to align with Marshall University's academic calendar.

### Start Dates for Academic Programs

Accelerated Pathway programs (in green) are one semester, Standard Pathway programs (in black) are two semesters. All Pathway programs can be started in the semester indicated below.

Program	Fall 2016 Aug 17, 2016 - Dec 9, 2016	Spring 2017 Jan 5, 2017 - May 5, 2017	Summer 2017 May 11, 2017 - Aug 11, 2017
<b>Undergraduate Pathway Programs</b>			
Business Administration, Computer Science, Engineering, General, Integrated Science and Technology, Science, Visual Arts	● ●	● ●	● ●
<b>Graduate Pathway Programs</b>			
Business Administration (MBA), Exercise Science, Human Resource Management, Sport Administration	● ●	● ●	● ●
Accountancy, Computer Science, Engineering, English (TESOL), Environmental Science, Health Care Administration, Information Systems, Mathematics, Mechanical Engineering, Safety, Technology Management	● ●	● ●	

### Start Dates for Academic English

Program	Fall 2016 Aug 16, 2016 - Dec 9, 2016	Spring 2017 Jan 4, 2017 - Apr 28, 2017	Summer 2017 May 10, 2017 - Aug 4, 2017
Academic English	✓	✓	✓

● Accelerated Pathway program    ● Standard Pathway program    ✓ Variable program length

### Start Dates for General English

Semester	Start	End
Fall 2016	August 16, 2016	September 16, 2016
	September 22, 2016	October 21, 2016
	October 27, 2016	December 2, 2016
Spring 2017	January 4, 2017	February 3, 2017
	February 9, 2017	March 10, 2017
	March 23, 2017	April 21, 2017
Summer 2017	May 10, 2017	June 9, 2017
	June 12, 2017	July 7, 2017
	July 10, 2017	August 4, 2017

### Deposits

Program	Tuition	Housing
General English	\$1,000	\$1,000
Academic English	\$2,000	\$2,000
Pathway Program	\$2,000	\$2,000
Academic English + Pathway	\$2,000	\$2,000

Insurance for entire length of program must be paid in full at time of deposit and is required for confirmation and I-20 generation.



The median mid-career salary level of Marshall alumni is **\$61,700** and more than half have jobs that make a positive impact on the world around them.

*(College Salary Report 2013)*



### Want to Find Out More?

If you would like to find out more about any of our programs or services, please visit our website. You can also contact us via email or phone, or visit one of our education counselors in your home country.

### Inquiries and Applications

#### INTO Marshall University

Marshall University  
One John Marshall Drive  
Huntington, West Virginia 25755  
USA

T: +1 304 696 4686

E: [INTO@marshall.edu](mailto:INTO@marshall.edu)

W: [marshall.edu/admissions/international](http://marshall.edu/admissions/international)

© 2015 INTO USA, LLC. All rights reserved. INTO and the INTO roundel are registered trademarks of INTO University Partnerships Ltd.



[intohigher.com/marshall](http://intohigher.com/marshall)



[facebook.com/INTOmarshalluniversity](https://facebook.com/INTOmarshalluniversity)



[twitter.com/INTO\\_MU](https://twitter.com/INTO_MU)



[instagram.com/INTOmarshall](https://instagram.com/INTOmarshall)



[myin.to/MarshallYouTube](https://myin.to/MarshallYouTube)



Download the mobile app at:  
[intohigher.com/marshall/app](http://intohigher.com/marshall/app)



Through innovative partnerships with leading universities, we expand opportunities for higher education, ensuring success and transforming the lives of our students and staff.

Education Counselor's Stamp



2016-17

NTON MARSHALL UNIVERSITY