



INTERNATIONAL
LANGUAGE
ACADEMY OF CANADA

ENGLISH IN CANADA



2016

Toronto



Vancouver

ilac.com

ENGLISH IN CANADA

Dear Students,

Welcome to ILAC, winner of the STM Lifetime Super Star Award. As we begin our 19th year offering top-quality English language programs to students from over 70 different countries, our commitment to improving your ILAC experience continues.

At ILAC, we offer service excellence that even other schools talk about. Our staff and faculty have been trained to provide you with the ultimate Canadian experience, both inside and outside the classrooms. Our doors are always open and we look forward to meeting you. See you at ILAC!

Sincerely,



Ilan Cohen
Executive Director
ilan@ilac.com



Jonathan Kolber
Executive Director - Principal
jonathan@ilac.com



Bernardo Riveros
Co-founder
bernie@ilac.com



welcome to
ILAC









Winner of the ST Super Stars Award

5-Year Winner, English Language School North America



Canada's Best Managed Companies

Winner, 2014

Regional Finalist, 2011

Platinum Club Finalist, 2010

—Deloitte, CIBC, National Post, Queen's School of Business



Top Language School in Toronto

2015 / 2014 / 2013 / 2012

Consumer Choice Award

—Survey conducted by Leger Marketing, the leader in Canada for research and polling



Top Choice Award

TORONTO: 2015 / 2014 / 2013 / 2012 / 2011
2010 / 2009 2008 / 2007

VANCOUVER: 2015 / 2014 / 2013 / 2012



ST Super Stars Award

Winner of the ST Star English Language School North America Award 5 Years in a row
—StudyTravel Star Awards



Japan Best School Award

2013 / 2010

ILAC Vancouver

—Ryugaku Journal



Customer Satisfaction Award

2015

LanguageCourses.net

—Highest customer satisfaction ratings in the world, based on reviews from over 1,000 language students



Best English School in Canada

2015 / 2014 / 2013

UED

—Selected by the Turkish Association of International Ambassadors



ILAC Toronto Best Language School in Canada

2013 / 2012

EducationStars Award, Switzerland

—Voted by Students



ILAC Vancouver Best Language School in Vancouver

2012

EducationStars Award, Switzerland

—Voted by Students

Become a student at ILAC



Meet the ILAC Team

Student Ambassadors & Agent Support

Directors



Jonathan
jonathan@ilac.com

Ilan
ilan@ilac.com

Agent Support



Tatiana
tatiana@ilac.com

Dorothée
dorothee@ilac.com

Carol
carol@ilac.com



Efi
efi@ilac.com

Emily
emily.lin@ilac.com

Elif
elif@ilac.com

Jimmy
jimmy@ilac.com

Juan Carlos
juan.carlos@ilac.com

Judy
judy.jung@ilac.com

Kristina
kristina@ilac.com



Mohamed
mohamed@ilac.com

Oscar
oscar@ilac.com

Sumiyo
sumiyo@ilac.com

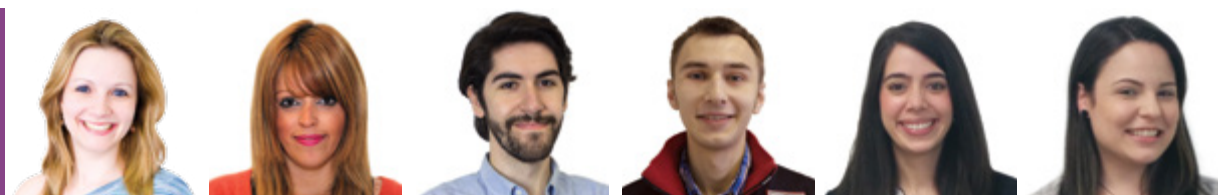
Tatiana
tatiana.menniti@ilac.com

Valentina
valentina.v@ilac.com

Vivi
vivi.thoi@ilac.com

Yuko
yuko@ilac.com

Student Ambassadors



Carolina
nina@ilac.com

Cintia
cintia@ilac.com

Eray
eray@ilac.com

Iegor
iegor@ilac.com

Lucia
lucia@ilac.com

Mariflor
mariflor@ilac.com



Akiko
akiko@ilac.com

Mona
mona.kim@ilac.com

Ana
ana@ilac.com

Petra
petra@ilac.com

Sahar
sahar@ilac.com

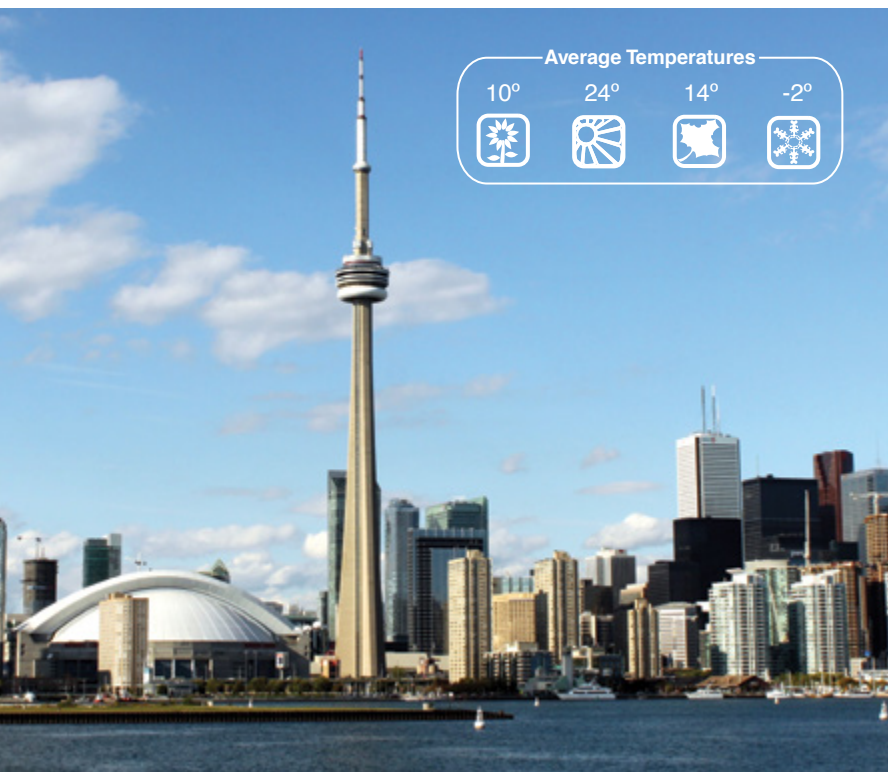
Santiago
santiago@ilac.com

Tatyana
tatyana@ilac.com

Toronto

The cosmopolitan city

920 Yonge Street, 4th floor
Toronto, ON, Canada, M4W 3C7
Phone: +1 (416) 961.5151
Fax: +1 (416) 961.5988 or +1 (416) 961.9267
Skype Toll Free: +1 (877) 452.2452



Study in one of the world's most exciting cities and experience:

- » Excellent shopping, entertainment and night life
- » Multicultural, friendly and safe environment
- » World-famous attractions including the CN Tower, SkyDome, Harbourfront and the Historic Distillery District
- » Convenient 24-hour public transportation
- » Proximity to New York City, Niagara Falls, Ottawa, Montreal and Quebec City

Facilities include:

- » Boutique design campuses
- » Located in the historic Yorkville neighbourhood
- » Walking distance to restaurants, cinemas, cafés, shopping, museums and the University of Toronto
- » Free wi-fi



Vancouver

The beautiful city

1199 W. Pender, Unit 100
Vancouver, BC, Canada, V6E 2R1
Phone: +1 (604) 484.6660
Fax: +1 (604) 484.6637
Skype Toll Free: +1 (877) 452.2452

Study in Canada's beautiful city and experience:

- » Spectacular views of the mountains and the Pacific ocean
- » Beaches, recreational parks and beautiful neighbourhoods
- » Close to Granville Island, Gastown, Yaletown, the Seawall, Stanley Park and Coal Harbour
- » Clean, friendly and safe environment
- » Outdoor activities to suit the great climate
- » Proximity to Whistler, Victoria and Seattle

Facilities include:

- » Boutique design campuses
- » Located in the heart of fashionable downtown Vancouver
- » Walking distance to shopping, restaurants, cafés, Simon Fraser University and British Columbia Institute of Technology
- » Free wi-fi
- » ETS Authorized TOEFL iBT Center
- » Cambridge Authorized Examination Venue

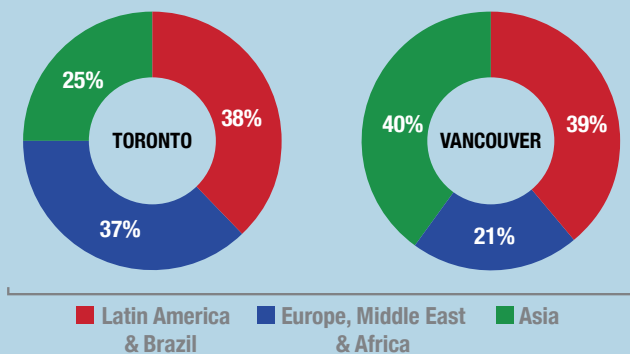


About our students

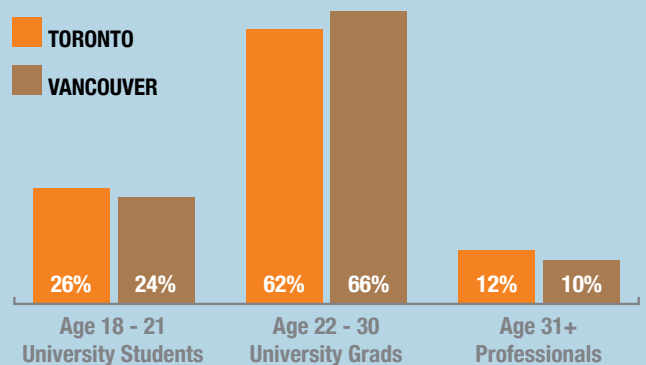
12,000+ students from over 70 countries come to ILAC every year.



Statistics by Region



Demographic of our students



Students you will meet at ILAC:

- » University students, university graduates and working professionals
- » Students with diverse careers such as web developers, engineers, flight attendants, doctors, cooks, lawyers and many other fields
- » International friends from over 70 countries



Program Overview

ILAC offers different English courses for every age, English level and goal.

English level 4 weeks each	1	2	3	4	5	6	7	8	9	10	11	12	13	14	15	16	17	
English Bands	BEGINNER			PRE-INTERMEDIATE		INTERMEDIATE		HIGH INTERMEDIATE		PRE-ADVANCED		ADVANCED		HIGH ADVANCED				
GENERAL ENGLISH	1	2	3	4	5	6	7	8	9	CHOOSE YOUR ADVANCED COURSE BELOW								
CAMBRIDGE ENGLISH (FCE)										10	11	12	13					
CAMBRIDGE ENGLISH (CAE)														14	15	16	17	
TOEFL EXAM PREPARATION										T10	T11	T12	T13	T14	T15	T16	T17	
IELTS EXAM PREPARATION										i10	i11	i12	i13	i14	i15	i16	i17	
BUSINESS ENGLISH										B10	B11	B12	B13	B14	B15	B16	B17	
ACADEMIC PATHWAY PROGRAM										PW1.1	PW1.2	PW2.1	PW2.2	PW3.1	PW3.2	PW3.3	PW3.4	

- » **ILAC offers 17 levels of English. Each level is 4 weeks.**
- » **Band refers to your English fluency.**
- » **Students are tested every two weeks to measure their progress.**
- » **Students may choose one of the above program streams based on their English level** (*take our online test*).
- » **Students may choose their program intensity: Intensive, Super-Intensive and Power English** (*see page 10*).

Program Details



Duration

- » The minimum course length is 2 weeks
- » Students may study for as many levels as required



Lesson Length

- » 45 minutes



Start Dates

- » Every second Monday (see calendar on page 25)



Minimum Age

- » 18 years old or high school graduate



English Requirements

- » See chart on page 8



Fees*

Course Length	Intensive (30 lessons/wk) Weekly fee	Super Intensive (34 lessons/wk) Weekly fee	Power English (38 lessons/wk) Weekly fee
1 - 10	\$340	\$370	\$395
11 - 21	\$325	\$355	\$380
22 - 32	\$305	\$335	\$360
33 - 43	\$295	\$325	\$350
44 +	\$285	\$315	\$340

*All fees are in Canadian dollars

Program Options

General English: (Levels 1-9) Beginner to High Intermediate levels

- » All students in beginner to high intermediate levels will study General English first
- » General English program focuses on all English skills: reading, writing, speaking, listening and grammar
- » Cambridge Exam testing (KET, PET) is given every two weeks, allowing students to track their own progress

Cambridge Exam Preparation: (Levels 10 - 17) General English for Advanced Students

- » **General English students at the advanced level should select this program**
- » The Cambridge curriculum is the best proven curriculum to improve general English skills
- » Students will be given exam practice and skills practice for FCE and CAE exams
- » Practice FCE and CAE exams are given every two weeks so students can measure their English fluency progress
- » The ILAC Guarantee: higher scores are guaranteed or a free course is offered*

Business English (Levels B10 - B17)

- » Introduction to Business English is available from Level B10 - B12
- » Advanced Business English is available from Level B12 – B17
- » Course focuses on Business communication skills required in the international business world
- » Students will gain English skills useful for negotiating, networking, managing meetings and interviews
- » Students will also prepare for the Cambridge Business Examination (BEC)

TOEFL Preparation (Levels T10 - T17)

- » Levels T10 – T17
- » TOEFL preparation is for students who want intensive exam practice
- » Students are given regular practice exams to measure their progress
- » The ILAC Guarantee: higher scores are guaranteed or a free course is offered*

IELTS Preparation (Levels I10 - I17)

- » IELTS preparation is for students who want intensive exam practice
- » Students are given regular practice exams to measure their progress
- » The ILAC Guarantee: higher scores are guaranteed or a free course is offered*

Academic Pathway (Levels PW1.1 - PW3.4)

- » Winner of the Top Choice Award 9 years in a row
- » Recognized by over 65 universities and colleges in Canada
- » For students who want to study at a university or college in Canada
- » Students are given regular practice exams to measure their progress

ILAC offers the official TOEFL ITP test

*Students must attend all classes, do all homework and write all tests in order to qualify for the ILAC guarantee.

Program Intensity Choices

i **Intensive** (30 lessons per week)

si **Super Intensive** (34 lessons per week)

pe **Power English** (38 lessons per week)



i Intensive

Principal Course (26/lessons/week) + Elective A Course (4 lessons/week)

	Monday	Tuesday	Wednesday	Thursday	Friday
8:45 am 11:45 am	Principal course	Principal course	Principal course	Principal course	Principal course
Lunch					
12:15 pm 1:45 pm	Principal course	Elective A	Principal course	Elective A	Principal course



RECOMMENDED

si Super-Intensive

Principal Course (26/lessons/week) + Elective A Course (4 lessons/week) + Elective B Course (4 lessons/week)

	Monday	Tuesday	Wednesday	Thursday	Friday
8:45 am 11:45 am	Principal course	Principal course	Principal course	Principal course	Principal course
Lunch					
12:15 pm 1:45 pm	Principal course	Elective A	Principal course	Elective A	Principal course
2:00 pm 2:45 pm	Elective B	Elective B	Elective B	Elective B	

pe Power English

Principal Course (26/lessons/week) + Elective A Course (4 lessons/week) + Academic Preparation (8 lessons/week)

	Monday	Tuesday	Wednesday	Thursday	Friday
8:45 am 11:45 am	Principal course	Principal course	Principal course	Principal course	Principal course
Lunch					
12:15 pm 1:45 pm	Principal course	Elective A	Principal course	Elective A	Principal course
2:00 pm 3:30 pm	Academic Preparation	Academic Preparation	Academic Preparation	Academic Preparation	

Principal Course (26 lessons per week)

- » Focused on your main area of study. You can choose your Principal course based on your English level and your objectives
- » Students can change their Principal course every week

Elective Course A or B (4 lessons per week)

- » Elective courses complement Principal courses and provide students with the opportunity to focus on specific skills or content areas, including: speaking, listening, pronunciation, grammar, writing, idioms, vocabulary, business, TOEFL, IELTS, and more
- » Students can change their Elective classes every week

Academic Preparation (8 lessons per week)

- » Students who want to pursue higher education or maximize their professional English skills are encouraged to take this class. Academic Preparation class has three components: academic reading, academic writing and homework support

Please see page 12 for complete list of courses

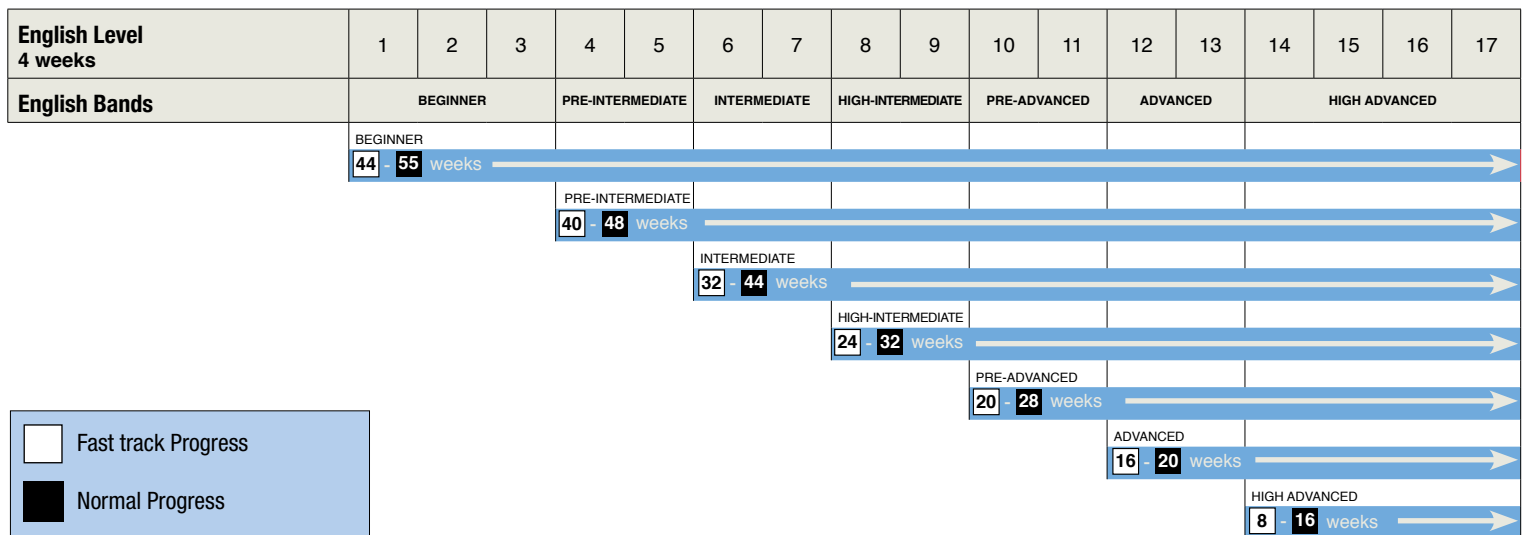
Progressing through the levels

Fast track Progress

- » Students who would like to progress up to 30% faster should enroll in the Super-Intensive **si** program
- » Students in the Academic Pathway program should enroll in Power English **pe** (recommended)
- » Complete 4 Levels in 12 weeks
- » At each level, students will write a practice Cambridge test every second week. Students can finish their level earlier by working hard and doing well in the practice Cambridge tests

Normal Progress

- » Students who enroll in the Intensive **i** program are expected to complete one level every 4 weeks, provided they attend all classes and do all homework
- » At each level, students will write a practice Cambridge test every second week
- » Students will move to the next level if they meet the exit requirements for their current level



Take our Online Test

ilac.com/onlinetest

- 1) Determine your English level.
- 2) Check if your level meets the program requirements.
- 3) Contact info@ilac.com for a customized study plan.



Elective B Courses* (4 lessons/week)

English through Correction																																					
Communication																																					
Workplace Communication																																					
Idioms in English																																					
English through Music																																					
Daily English																																					
English through Drama																																					
English through Media																																					
English through Social Media																																					
English through Canadian Culture																																					
English through Current Events																																					
Academic Writing																																					
Academic Vocabulary																																					
Academic Reading																																					

Academic Preparation Courses (8 lessons/week)

Academic Preparation & Homework Support																																						
---	--	--	--	--	--	--	--	--	--	--	--	--	--	--	--	--	--	--	--	--	--	--	--	--	--	--	--	--	--	--	--	--	--	--	--	--	--	--

Exit Test Scores (Equivalencies with ILAC Levels)

Intro	KET Pass	KET Merit	PET Pass	PET Merit	FCE-C	FCE-A	CAE-C	CAE-A
		3+		4.5+	5+	5.5+		7.0+
		35+		55+	60+	70+		100+
A1		A2		B1		B2		C1+

*Sample. Electives will be added or removed based on availability and student interest.

The Academic Pathway Program

- » Successful completion of Academic Pathway III guarantees students' acceptance to most of **ILAC's 65 partner universities and colleges**, without TOEFL and IELTS
- » ILAC's Pathway program leads to Bachelor's degree programs, Master's degrees, Postgraduate diplomas and certificates, and MBA programs
- » Academic Pathway program graduates are expected to achieve a TOEFL score of 90-100 iBT
- » Prepares students with the necessary Academic English skills for study at a Canadian college or university
- » Program length depends on student's English level (from 8 weeks to one academic year)

English Levels	1	2	3	4	5	6	7	8	9	PW1.1	PW1.2	PW2.1	PW2.2	PW3.1	PW3.2	PW3.3	PW3.4
English Bands	Beginner		Pre-Intermediate		Intermediate		High-Intermediate		Pre-Advanced		Advanced		High-Advanced				
Principal Course Available	General English									Pathway I		Pathway II		Pathway III Certificate			

Program Intensity Options

- » Intensive English Program (30 lessons/week)
- » Super Intensive English Program (34 lessons/week)
- » Power English Program (38 lessons/week) **RECOMMENDED**

Start Dates

- » Pathway I, II or III courses always start in week 1. (For Main Start Dates, please see calendar on page 25)

Fees*

# of Weeks	Intensive (30 lessons/wk)	Super Intensive (34 lessons/wk)	Power English (38 lessons/wk)
	Weekly fee	Weekly fee	Weekly fee
1 - 10	\$340	\$370	\$395
11 - 21	\$325	\$355	\$380
22 - 32	\$305	\$335	\$360
33 - 43	\$295	\$325	\$350
44 +	\$285	\$315	\$340

*All fees are in Canadian dollars

Duration

If your level is	The length of your program will be
High Advanced	8 weeks – 12 weeks
Advanced	16 weeks – 20 weeks
Pre-Advanced	24 weeks – 28 weeks
High Intermediate	28 weeks – 32 weeks
Intermediate	32 weeks – 40 weeks
Beginner	40 weeks – 52 weeks

Requirements

- » Minimum 18 years old or High School Graduate
- » Written and oral test on the first day to determine student's English level
- » Students with an English level lower than Pre-Advanced will be placed in General English first and then progress into Academic Pathway I, II, III
- » Students with a Pre-Advanced level or higher may enter the Academic Pathway program immediately

The Application Process

1

Take the online test at ilac.com/onlinetest to determine your English level.

2

Please contact academic@ilac.com for a customized study plan and the length of your Pathway program.

3

Enroll in the Academic Pathway program.

4

Choose your program of study and your university or college with the assistance of ILAC's Placement Specialists.

5

Submit a notarized English translation of your diploma and transcripts (high school or university) to ILAC's Pathway department.

Meet our University & College Placement Specialists



Hande
hande@ilac.com

Diana
diana@ilac.com

Svetlana
svetlana@ilac.com

Gerson
gerson@ilac.com



Karma
karma@ilac.com

Julia
julia@ilac.com

Chad
chad@ilac.com

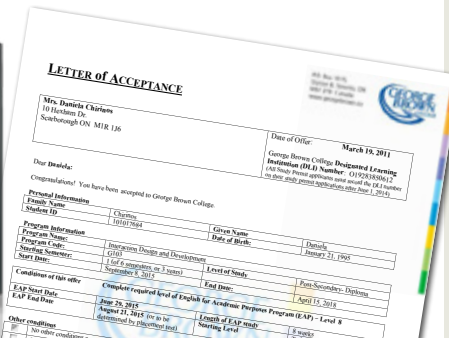
Juliana
juliana.capalbo@ilac.com

University & College Placement Services

- » Free university and college placement
- » Help with choosing the best program for you, based on your goals and academic background
- » Ongoing support and counselling while in your home country, while at ILAC, and while studying at our partner university or college
- » Help with completing your university or college application
- » Receiving a conditional letter of acceptance from the university or college, for visa purposes
- » Group and individual university and college tours
- » Study permit and visa extension assistance

ILAC Partner Universities & Colleges

- | | |
|--|--|
| 1. Algoma University | 34. Mount Saint Vincent University |
| 2. Algonquin College | 35. Mohawk College |
| 3. Alexander College | 36. NAIT Polytechnic |
| 4. Art Institute of Vancouver | 37. New Brunswick Community College |
| 5. Bow Valley College | 38. Niagara College |
| 6. Brock University | 39. North Island College |
| 7. Cambrian College | 40. OCAD University |
| 8. Camosun College | 41. Okanagan College |
| 9. Cape Breton University | 42. Red River College |
| 10. Capilano University | 43. Royal Roads University |
| 11. Centennial College | 44. SAIT Polytechnic |
| 12. Concordia University of Edmonton | 45. Seneca College |
| 13. Conestoga College | 46. Sheridan College |
| 14. Confederation College | 47. Saint Mary's University |
| 15. Douglas College | 48. St. Clair College |
| 16. Durham College | 49. St. Lawrence College |
| 17. Emily Carr University of Art and Design | 50. Thompson Rivers University |
| 18. Fairleigh Dickinson University | 51. Toronto Film School/RCCIT |
| 19. Fanshawe College | 52. Trent University |
| 20. Fraser International College at Simon Fraser University | 53. University of the Fraser Valley |
| 21. George Brown College | 54. University of Ontario Institute of Technology |
| 22. Georgian College | 55. University of Toronto International Foundation |
| 23. Humber College | 56. University of New Brunswick |
| 24. Huron University College at The University of Western Ontario | 57. University of Ontario Institute of Technology |
| 25. International College of Manitoba | 58. University of Regina |
| 26. King's University College at The University of Western Ontario | 59. University of Toronto Foundation Program |
| 27. Kwantlen Polytechnic University | 60. University of Windsor |
| 28. Lakehead University | 61. University of Winnipeg |
| 29. Lambton College | 62. Vancouver Film School |
| 30. Langara College | 63. Vancouver Community College |
| 31. Laurentian University | 64. Vancouver Island University |
| 32. LaSalle College | 65. Wilfrid Laurier University |
| 33. Manitoba Institute of Trades and Technology | |



Success Story

Daniela Chirinos, Venezuela
ILAC Pathway Graduate, 2011

"The ILAC Pathway program really broadened my vocabulary and helped me a lot when it came to writing reports and essays. My grammar improved so much, too! The best part of my experience at George Brown College was the opportunity to learn from industry experts."

George Brown College 2014: Advanced Diploma in Business Administration
Current Job: Marketing Coordinator, Scotiabank Global Markets

We are your home at ILAC



Homestay Accommodation

- » 94% of our students would recommend our homestay program to their friends
- » Our English-speaking homestay families are carefully selected to meet your needs
- » Homestay living is a great way to practice your English in a social setting
- » Experience Canada's culturally-diverse population firsthand

Homestay

Single Room Homestay:

- » 1 student in a private room with shared bathroom living with a host family
- » 3 meals per day, 7 days a week
- » Internet access
- » \$225 CAD per week

Twin Room Homestay

- » Available upon request

What to expect in a Homestay

- » Host families may come from different backgrounds
- » Two or more international students may live in the same homestay
- » Self-serve breakfast
- » Self-serve packed lunch
- » Hot dinner

Residence

- » For more information, please visit ilac.com

Airport Pick-up & Drop-off

- » An ILAC representative will greet you and pick you up at the airport
- » Airport drop-off service is also available and can be arranged in Canada

Toronto



Ana
amontilla@ilac.com

Ayuko
ayuko@ilac.com

Carolina
calmeida@ilac.com



Diana
diana.r@ilac.com

Arevik
arevik@ilac.com

Gizem
gizem@ilac.com

Vancouver



Elena
elena@ilac.com

Gabriel
gabriel@ilac.com

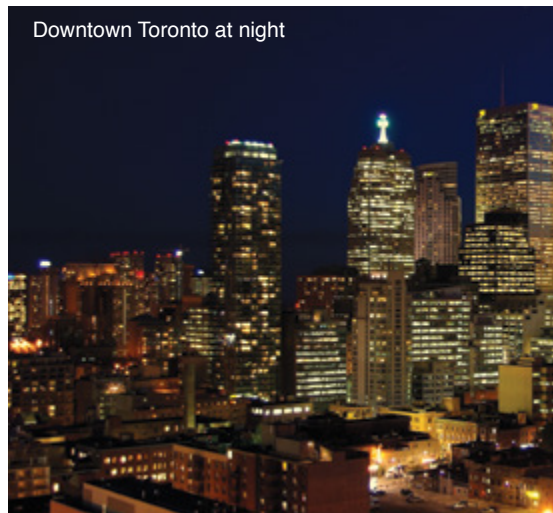
Sayaka
sayaka.m@ilac.com



ILAC Lifestyle



Downtown Toronto at night



Canada's Wonderland



Toronto Raptors star Greivis Vasquez and Miss Universe Gabriela Isler at Bullying Awareness and Prevention week



Snowboarding





ILAC Lifestyle



Vancouver and Grouse Mountain



Capilano suspension bridge



Whistler



Bicycl



Canoeing on Lake Ontario



Vancouver by night



Sea Kayaking



Skydiving



Snowboarding



ing in downtown Vancouver



Fees

Program Fees

Course Length	Intensive (30 lessons/week) Weekly fee	Super Intensive (34 lessons/week) Weekly fee	Power English (38 lessons/week) Weekly fee
1 - 10 weeks	\$340	\$370	\$395
11 - 21 weeks	\$325	\$355	\$380
22 - 32 weeks	\$305	\$335	\$360
33 - 43 weeks	\$295	\$325	\$350
44+ weeks	\$285	\$315	\$340

Accommodation

Accommodation Placement Fee (One-time fee)	\$195
Homestay Single with 3 meals/day	\$225/week
Homestay Twin (on request) with 3 meals/day	\$205/week
Homestay High Season Supplement for weeks June 25 – August 6	\$25/week

Other Fees

Registration Fee	\$125
Registration Fee (High Season - June and July)	\$200
Airport Pick-up	\$100
Airport Drop-off	\$70
Health Insurance	
Weekly rate	\$17.50
Daily rate	\$2.50
Custodianship Letter (Courier fees not included)	\$100
Courier fees	Fee varies





2016

Registration Form

Student Information

Mr. Mrs. Nationality _____ Mother Tongue _____ Passport # _____
 Last Name _____ First Name _____ Date of Birth _____
 Home Address _____ City _____ Province _____
 Country _____ Email _____ Telephone _____

Agent Information

Agency _____ Contact Person _____ Email _____

Arrival Information

Arrival Date _____ Airport Pick-up Yes No Flight Information _____
YYYY / MM / DD
 Departure Date _____ Airport Drop-off Yes No Flight Information _____
YYYY / MM / DD

Homestay Accommodation

School Campus Toronto Vancouver

Homestay (HS) Residence No Accommodation Special Request or Preferences _____
 Length Weeks _____
 Single HS Twin HS
 Specify Residence _____

ILAC will do our best to accommodate your requests, however, due to availability we cannot guarantee that your request will be granted.

Medical Information

Please note – it is mandatory for ILAC students to have Medical Insurance during their stay in Canada

Do you have Medical Insurance? Yes No Policy Number _____
 Do you have any allergies? Yes No List of Allergies _____
 Do you have any medical problems? Yes No List Medical Issues _____
 Do you have any food restrictions? Yes No List Food Restrictions _____
 Do you like pets? Yes No List any other issues _____

Course Focus

Choose as many courses below as you wish

General English
 Cambridge English (FCE)
 Cambridge English (CAE)
 TOEFL Preparation
 IELTS Preparation
 Business English
 The Academic Pathway Program
 Other _____

Price Calculator (CAD\$)

<input type="checkbox"/> Registration fee	\$125		\$125
<input type="checkbox"/> Tuition (Intensive: 30 lessons/week)	\$____/week	x ____ weeks =	
<input type="checkbox"/> Tuition (Super-Intensive: 34 lessons/week)	\$____/week	x ____ weeks =	
<input type="checkbox"/> Tuition (Power English: 38 lessons/week)	\$____/week	x ____ weeks =	
<input type="checkbox"/> Accommodation placement fee	\$195		
<input type="checkbox"/> Single Homestay	\$225/week	x ____ weeks =	
<input type="checkbox"/> Twin Homestay (on request)	\$205/week	x ____ weeks =	
<input type="checkbox"/> Residence (prices available upon request)			
<input type="checkbox"/> Health insurance	\$17.50/week	x ____ weeks =	
<input type="checkbox"/> Airport pick-up	\$100		
<input type="checkbox"/> Airport drop-off	\$70		
<input type="checkbox"/> Custodianship letter	\$100		
TOTAL			

Start Date _____
YYYY / MM / DD

Weeks of Study _____

Applicant signature _____ Date _____ Co-applicant signature _____ Date _____
YYYY / MM / DD

Policies

Withdrawals, Transfers and Refunds

IF YOU ARE DENIED A VISA

You are entitled to receive a FULL REFUND (less program registration fee and all bank transfer charges) if you are unable to obtain lawful entry to Canada for the purpose of studying at ILAC. You must provide the letter from the Canadian Embassy stating that your Visa to enter Canada was denied. Students who have applied through an agent must contact the agent for a refund.

ONCE YOU RECEIVE AN ENTRY VISA OR IF AN ENTRY VISA IS NOT REQUIRED

Students who have obtained their visa with the help of a letter of acceptance from ILAC and a conditional letter of acceptance and/or supporting letter to a Pathway Program institution will be expected to complete their English language training at ILAC and not be eligible for a refund.

Once you have started studying, the first 4 weeks of your homestay are non-refundable. ILAC requires at minimum, a 2-week written notice for any changes, cancellations, or postponements. Otherwise a 2 week accommodation fee will be applicable and the homestay placement fee is not refundable.

To withdraw from a program at ILAC, you must first provide a written letter, dated and signed, outlining the reason for withdrawing. If you chose to withdraw from ILAC, you must demonstrate that your stay in Canada is lawful or that you will be leaving the country. ILAC will require proof that your Visa status is lawful. ILAC may require proof that you are leaving the country early by showing a photocopied plane ticket. If you are attending another school you will need to provide evidence that you meet the Visa requirement; you will have to re-apply for a new Visa. Students who have applied through an agent must contact the agent for a refund.

ILAC may be required to submit attendance and/or advancement data for all international students to the federal government. Poor attendance, lack of progression and unlawful stays in the country may result in visa removals and a student may be asked to return to their home country. There are no refunds for students changing programs.

Refund Policy – Language Programs

From 0% to 10% of course completed	70% refund
11 to 30% of course completed	50% refund
After 30% of course completed	NO refund

Student Records, Photo Release, and Consent to Use of Personal Information

ILAC collects, uses, retains and discloses information in accordance with the Personal Information Protection Act (“PIPA”). ILAC may share and disclose personal information within the institution to carry out its mandate and operations. Information, in aggregate form only, may also be used for research purposes and statistics.

ILAC is required to submit directly to designate Provincial or Federal agencies to confirm student attendance and/or advancement in the program. Poor attendance and lack of progression may result in visa removals and a student may be asked to return to their home country.

Agreement and Medical Authorization

ILAC students must understand that medical insurance is mandatory while attending ILAC. ILAC has offered to each student the option to purchase medical insurance during the registration/application process.

If a student declined to purchase ILAC’s medical insurance they are required to purchase their own insurance from a different provider. The student must provide evidence of medical insurance.

Student disclaimer:

I do waive and release all claims against ILAC for any injury, loss, damage, accident, delay and expenses from my participation in the program.

I release and agree to indemnify ILAC with regard to any financial obligations or liabilities that I may personally incur or any damage or injury to the person or property of others that I may cause while participating in the program. I also understand that ILAC is not responsible for any injury or loss suffered or caused by me while away from the school for any reason.

If I become ill, injured or incapacitated, ILAC or the host family shall immediately contact my parent/guardian in order that he/she may participate in any decision respecting a course of action or treatment for me. If the course of action includes transporting me back to my country, I shall do so at my own expense. I understand that my participation at ILAC and in the accommodation program may be terminated at the sole discretion of ILAC without a refund of fees and that I may be sent home at my expense if I do not adhere to these rules, standards and instructions.

I agree that Canadian law shall apply to this agreement and I agree to submit to the jurisdiction of Canadian law. I agree to pay promptly all telephone bills charged by me to the host family phone in case I did not use a pre-paid phone card.

I have read and agree to the Policies and Procedures as outlined in the Student Handbook and understand my Student Rights and Responsibilities while attending at ILAC. I understand that any false or incomplete information submitted in support of my registration may invalidate my registration. If the applicant is less than 18 years old, please have a parent co-sign on page 23.

To review the current student handbook visit www.ilac.com



2016 Start Dates

■ Main Start Dates □ Alternate Start Dates

Regular classes will be closed on holidays that fall on Monday start dates, however orientation will still take place.

January							February							March							April						
Sun	Mon	Tue	Wed	Thu	Fri	Sat	Sun	Mon	Tue	Wed	Thu	Fri	Sat	Sun	Mon	Tue	Wed	Thu	Fri	Sat	Sun	Mon	Tue	Wed	Thu	Fri	Sat
					1	2		1	2	3	4	5	6			1	2	3	4	5						1	2
3	4	5	6	7	8	9	7	8	9	10	11	12	13	6	7	8	9	10	11	12	3	4	5	6	7	8	9
10	11	12	13	14	15	16	14	15	16	17	18	19	20	13	14	15	16	17	18	19	10	11	12	13	14	15	16
17	18	19	20	21	22	23	21	22	23	24	25	26	27	20	21	22	23	24	25	26	17	18	19	20	21	22	23
24	25	26	27	28	29	30	28	29						27	28	29	30	31	24	25	26	27	28	29	30		
31																											

May							June							July							August								
Sun	Mon	Tue	Wed	Thu	Fri	Sat	Sun	Mon	Tue	Wed	Thu	Fri	Sat	Sun	Mon	Tue	Wed	Thu	Fri	Sat	Sun	Mon	Tue	Wed	Thu	Fri	Sat		
1	2	3	4	5	6	7				1	2	3	4						1	2		1	2	3	4	5	6		
8	9	10	11	12	13	14	5	6	7	8	9	10	11	3	4	5	6	7	8	9	7	8	9	10	11	12	13		
15	16	17	18	19	20	21	12	13	14	15	16	17	18	10	11	12	13	14	15	16	14	15	16	17	18	19	20		
22	23	24	25	26	27	28	19	20	21	22	23	24	25	17	18	19	20	21	22	23	21	22	23	24	25	26	27		
29	30	31					26	27	28	29	30	24	25	26	27	28	29	30	28	29	30	31							
														31															

September							October							November							December						
Sun	Mon	Tue	Wed	Thu	Fri	Sat	Sun	Mon	Tue	Wed	Thu	Fri	Sat	Sun	Mon	Tue	Wed	Thu	Fri	Sat	Sun	Mon	Tue	Wed	Thu	Fri	Sat
				1	2	3							1			1	2	3	4	5					1	2	3
4	5	6	7	8	9	10	2	3	4	5	6	7	8	6	7	8	9	10	11	12	4	5	6	7	8	9	10
11	12	13	14	15	16	17	9	10	11	12	13	14	15	13	14	15	16	17	18	19	11	12	13	14	15	16	17
18	19	20	21	22	23	24	16	17	18	19	20	21	22	20	21	22	23	24	25	26	18	19	20	21	22	23	24
25	26	27	28	29	30	23	24	25	26	27	28	29	27	28	29	30	25	26	27	28	29	30	31				
							30	31																			

Main Start Dates

Monday, January 4
 Monday, February 1
 Monday, February 29
 Monday, March 28
 Monday, April 25
 Monday, May 23
 Monday, June 20
 Monday, July 18
 Monday, August 15
 Monday, September 12
 Monday, October 10
 Monday, November 7
 Monday, December 5

Alternate Start Dates

Monday, January 18
 Monday, February 15
 Monday, March 14
 Monday, April 11
 Monday, May 9
 Monday, June 6
 Monday, July 4
 Monday, August 1
 Monday, August 29
 Monday, September 26
 Monday, October 24
 Monday, November 21
 Monday, December 19

Toronto Official Holidays

Friday January 1 – New Year's Day
 Monday February 15 – Family Day
 Friday March 25 – Easter (Good Friday)
 Monday May 23 – Queen Victoria Day
 Friday July 1 – Canada Day
 Monday August 1 – Simcoe Day
 Monday September 5 – Labour Day
 Monday October 10 – Thanksgiving Day
 Monday December 26 – Christmas Day
 Tuesday December 27 – Boxing Day

Vancouver Official Holidays

Friday January 1 – New Year's Day
 Monday February 8 – Family Day
 Friday March 25 – Easter (Good Friday)
 Monday May 23 – Queen Victoria Day
 Friday July 1 – Canada Day
 Monday August 1 – B.C. Day
 Monday September 5 – Labour Day
 Monday October 10 – Thanksgiving Day
 Friday November 11 – Remembrance Day
 Monday December 26 – Christmas Day



@iloveilac



youtube.com/iloveilac



instagram.com/ilac_canada



facebook.com/iloveilac




linkedin.com/groups/ilac



ILAC TORONTO
920 Yonge Street, 4th floor
Toronto, ON
Canada M4W 3C7
T: +1 (416) 961.5151
F: +1 (416) 961.9267

ILAC VANCOUVER
1199 W. Pender, Unit 100
Vancouver, BC
Canada V6E 2R1
T: +1 (604) 484.6660
F: +1 (604) 484.6637

 Toll Free: +1 (877) 452.2452

info@ilac.com

ILAC is a Designated Learning Institute.
Toronto: O19319227442
Vancouver: O19283901032

Winner 2014. Sponsored by Deloitte,
CIBC and the National Post

ILAC is a proud member of

