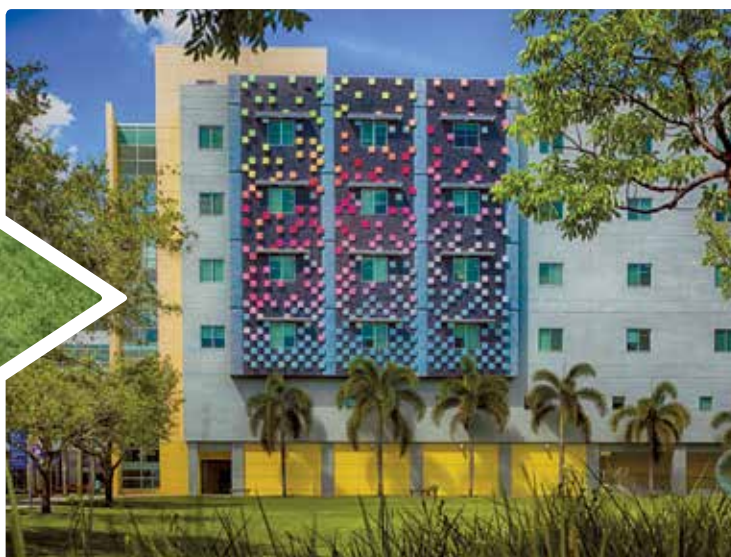




# FLORIDA INTERNATIONAL UNIVERSITY

## 2016 UNDERGRADUATE STUDENT GUIDEBOOK







# Welcome

## A Message from the President

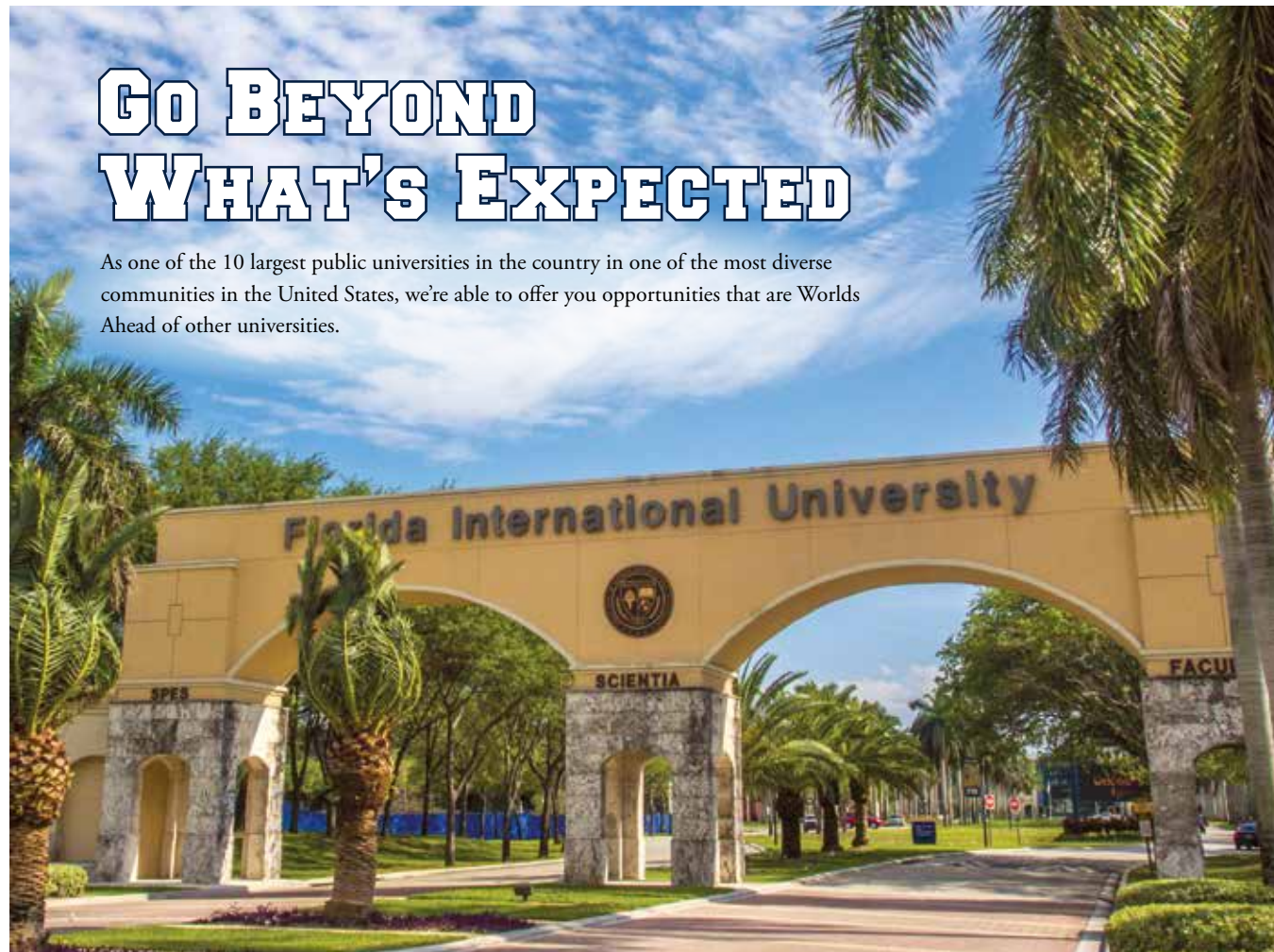
Our motto here at Florida International University is, “Be Worlds Ahead.” Located in the vibrant, edgy and globally connected city of Miami, we pride ourselves on the amazing learning experience that our faculty and staff provide to our more than 54,000 students. FIU prepares students for the rigors of the 21st-century workplace and nurtures qualities that students need to become effective and successful global citizens. I invite you to join us at FIU to receive an outstanding education in an entrepreneurial city, all at a reasonable price. Take a look at what we have to offer!

*Mark B. Rosenberg*  
*President, Florida International University*



# GO BEYOND WHAT'S EXPECTED

As one of the 10 largest public universities in the country in one of the most diverse communities in the United States, we're able to offer you opportunities that are Worlds Ahead of other universities.



Located in the thriving city of Miami, FIU's modern buildings and beautiful grounds welcome you to our diverse, friendly community, while our industry connections and internship opportunities help you launch your career in a global marketplace.



# Miami



## Global. Entrepreneurial. Fashionable. Warm.

People come from all over the world to experience Miami's beaches, culture, food and festivals. At FIU, you'll take classes and make friends with students from all over the world in the spectacularly lush settings of our Modesto A. Maidique and Biscayne Bay campuses. You'll do it while being 30 minutes from South Beach and the Atlantic Ocean, the Everglades National Park and downtown. Plus, you're only a three-hour flight from New York City and a short flight to both Central and South America.

More than 1,000 multinational companies call Miami home and it is consistently recognized as the "Best City for Doing Business in Latin America" by *América Economía*. Miami is the hub of the hospitality industry and hosts the four-day, star-studded Food Network and Cooking Channel South Beach Wine & Food Festival presented by *FOOD & WINE*, which our students help plan and execute.

Most importantly, don't forget to pack your flip-flops — you'll need them for the beaches all year. Experience the best of all worlds: a vibrant international community, a thriving business hub and year-round tropical weather.



# Attend an Award-Winning University

Worried about finding a job after you graduate? FIU has been recognized by *Bloomberg Businessweek* as **#8 in Business Schools for Return on Investment in 2013** — meaning our students get jobs.

Plus, FIU boasts:

- #6 International Business Programs**  
— *U.S. News & World Report*
- #15 Best International Business Programs—Graduate**  
— *Bloomberg Business Week*
- #25 Undergraduate Marketing Programs**  
— *Bloomberg Businessweek*
- #102 Best Law Schools**  
— *U.S. News & World Report*



## Fast Facts

### WHO WE ARE:

- ▶ **WHERE:** Miami, Florida
- ▶ **WHO:** 55,000 students enrolled in Fall 2015
- ▶ **MASCOT:** FIU Panthers
- ▶ **5TH LARGEST SCHOOL** by enrollment in the U.S.
- ▶ **200,000** worldwide "Panther" graduates

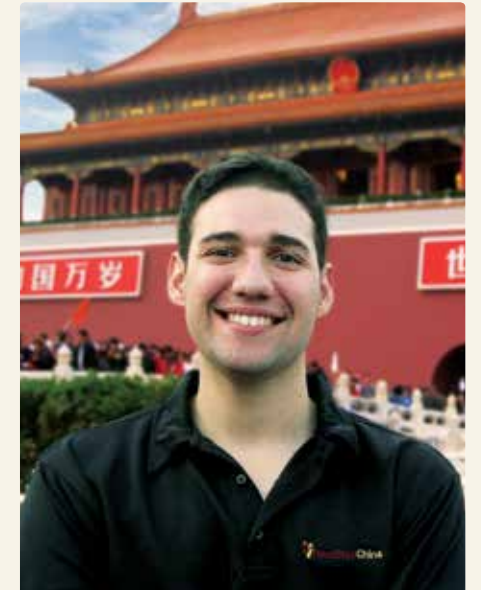


- ▶ **#1 IN THE NATION** awarding degrees to Hispanic students
- ▶ Our **PATRICIA & PHILLIP FROST ART MUSEUM** is located on campus and was designed by internationally recognized architect Yann Weymouth
- ▶ We have the only **UNDERWATER OCEAN LABORATORY** in the world
- ▶ Leaders in cutting-edge research, including **FIU'S WALL OF WIND (WoW)**, capable of simulating a Category 5 hurricane
- ▶ **#4 MODEL UNITED NATIONS TEAM** in North America
- ▶ **INTERNATIONAL ENGINEERING INTERSHIP PROGRAM** with construction giant Obrascón Huarte Lain offers work in Madrid
- ▶ **LARGEST NUMBER OF GRADUATES** working in the hospitality industry,\* and leading hotel and resort companies recruit on campus
- ▶ **SIXTH-LARGEST** computer science program in the U.S.

\* According to recent LinkedIn poll:  
<http://skift.com/2014/09/15/linkedin-data-show-where-hospitality-professionals-of-today-went-to-school/>

We have a job bank with more than **3,000 opportunities** posted year-round, and we work hard to build relationships with **Fortune 500** and other major corporations that **recruit on campus**.

As technology pushes the field of journalism and mass communications further, FIU prepares rising stars, like six-time Emmy-winning reporter Pamela Silva Conde, with the tools to succeed in national and international markets.



FIU is nationally recognized for its hurricane research. Our Wall of Wind™ is the first facility in the world to recreate Cat 5 wind speeds and is even featured at Disney's Epcot Center.

FIU's business programs are among the best in the nation according to *U.S. News & World Report*, with international business ranked in the top 10.

## Be Worlds Ahead

FIU graduates go on to do great things... and with 200,000+ alumni worldwide, you'll find a fellow Panther just about anywhere.



From the Everglades to Biscayne Bay, FIU's location makes it ideal for environmental research and hands-on learning.



The Food Network/Cooking Channel South Beach Wine & Food Festival presented by *Food & Wine* is a national, star-studded, four-day destination event, and FIU students run it. From operations to logistics, students partner with celebrity chefs like Masaharu Morimoto in this real-world classroom experience.



# How Do I Attend FIU?

International students can choose the program that fits their needs and learning styles. Students may enter FIU through the pre-sessional English program, the G1Y program or directly. A student may be eligible for a different entry point depending on level of English proficiency.

## Ways to Enter FIU

	Standard Entry	Global First Year 2 Semesters	Global First Year 3 Semesters	Pre-Sessional English*
First-Year Program Length	9-12 months	9 months	12 months	1 session/14 weeks
Program Curriculum	Flexible	Preset	Preset	Preset
Total Credits Earned Towards Degree	31+	26-28	39-42	Not applicable
Progression Requirements	Not applicable	GPA 2.0	GPA 2.0	Complete ELI level 5
Progression Into	Not applicable	Year 2 College of Arts and Sciences	Year 2 College of Arts and Sciences	Global First Year 3 Semesters
Minimum GPA Required to Enroll	3.25	2.8	2.8	2.8
Minimum TOEFL®   IELTS™ Required to Enroll	TOEFL® 80 IELTS™ 6.5	TOEFL® 68 IELTS™ 5.5	TOEFL® 60 IELTS™ 5.0	TOEFL® <60 IELTS™ <5.0
Other Standardized Tests Required	SAT or ACT	None	None	None
Tuition + Fees	\$18,506*	\$22,400	\$24,400	\$7,500

\* Students enrolling in the summer 2016 ELI session are required to have a minimum IELTS™ score of 4.0 or a minimum TOEFL® score of 41. The Summer 2016 ELI session lasts for 14 weeks.



## What Is the FIU Global First Year?

FIU’s Global First Year (G1Y) is created specifically for international students. As a G1Y student, you will enjoy 24/7 support services, intensive English courses tailored to your class schedule and a curriculum that combines requirements from your chosen major with courses about your new university’s culture, history and traditions. The G1Y sets you up for success from your first day on campus all the way through graduation — and beyond.

In the G1Y, you are given all the tools you need for academic, social and professional success. Along with classmates from around the globe, you will form a tight-knit community and

integrate seamlessly into life on campus. Have a true American university experience, from cheering on the FIU Panthers at an American football game to interning with Fortune 500 companies — your possibilities are endless. The G1Y sets you up for success.

During the G1Y, you will earn college credits during your first year and progress directly into the second year of your degree in the College of Arts and Sciences. Progression into other degrees may require additional prerequisites. Please visit [GlobalFIU.com](http://GlobalFIU.com) for more information.



# What Will I Learn?

GIY students take a core curriculum and choose one of three academic tracks:

1. Humanities & Social Sciences
2. STEM (Science, Technology, Engineering and Mathematics) & Computer Science
3. Business, Finance & Economics

### SAMPLE CURRICULUM, GLOBAL FIRST YEAR — 3 TERMS

Courses subject to change based on availability and student placement exam results.

Semester 1	Semester 2	Semester 3
Introduction to Writing/Reading	Essay Writing	Writing and Rhetoric I
English for Academic Purposes I	English for Academic Purposes II	English for Academic Purposes III
	First-Year Experience	
<b>Humanities I</b> <i>* Music Literature/Music Appreciation</i>	<b>Social Science I</b> <i>* Principals of Microeconomics</i> <i>* Technology, Humans &amp; Society</i> <i>(Depending on major)</i>	<b>Social Science II</b> <i>* Principals of Macroeconomics</i> <i>* Introduction to Psychology</i> <i>(Depending on major)</i>
<b>Arts Course</b> <i>* Public Speaking</i>	<b>Natural Science I</b> <i>* Environmental Science &amp; Sustainability w/ Lab</i> <i>* General Chemistry I</i> <i>* General Biology I</i> <i>(Depending on major)</i>	<b>Natural Science II</b> <i>* Ecology of South Florida with Lab or General</i> <i>* General Biology II</i> <i>(Depending on major)</i>
<b>Math I Course</b> <i>Intermediate Algebra to Calculus II based on ALEKS exam score</i>	<b>Math II Course</b> <i>Intermediate Algebra to Calculus II based on ALEKS exam score</i>	<b>Math III Course</b> <i>Intermediate Algebra to Calculus II based on ALEKS exam score</i>
Total Credits: 13-14	Total Credits: 13-14	Total Credits: 13-14

\* Course selection in the Mathematics and Natural Sciences are based on ALEKS exam score and major. Courses subject to change based on availability and student placement exam results.

## FIRST YEAR EXPERIENCE

The First Year Experience course introduces students to the university and promotes and supports academic, intellectual, personal and social growth and success. The course reviews the skills and competencies necessary for first-year students’ transition to the university, including developing effective study skills; understanding University Core Curriculum, major and career choices; managing time, finances, responsibilities, health and wellness; developing social relationships and appreciating the diversity of our campuses and communities; and preparing for global citizenship.

PROGRESSION													
PROGRESSION VARIES BASED ON A STUDENT’S ENGLISH-LANGUAGE ABILITY, DEGREE CHOICE AND COURSE LOAD PER SEMESTER.													
Program	Year 1			Year 2			Year 3			Year 4			Year 4+
	Fall	Spring	Summer	Fall	Spring	Summer	Fall	Spring	Summer	Fall	Spring	Summer	
Standard Application	UNDERGRADUATE DEGREE												
Global First Year 2 Semesters	GIY [2]		UNDERGRADUATE DEGREE										
Global First Year 3 Semesters	GIY [3]			UNDERGRADUATE DEGREE									
Pre-Sessional English	Varies	GIY [3]		UNDERGRADUATE DEGREE									

# FIU Global Tracks

## STEM Field & Computer Science

Biology  
Biomedical Engineering  
Chemistry  
Civil Engineering  
Computer Science  
Computer Engineering  
Dietetics and Nutrition (Didactic Program)  
Earth Sciences  
Electrical Engineering  
Geosciences  
Information Technology  
Marine Biology  
Mathematics/Statistics  
Mechanical Engineering  
Physics

## Business, Finance & Economics

Accounting  
Business Administration  
Construction Management  
Economics  
Environmental Engineering  
Finance  
Human Resources  
International Business  
Management  
Management of Information Systems  
Marketing  
Public Administration  
Real Estate

## Social Sciences & Humanities

Advertising (Communication)  
Anthropology/Sociology  
Asian Studies  
Broadcast (Communication)  
Communication Arts  
Criminal Justice  
Digital Media Studies (Communications)  
English  
French  
Geography  
History  
Hospitality Administration/Management  
Interdisciplinary Studies  
International Relations  
Journalism (Communication)  
Liberal Studies  
Philosophy  
Political Science  
Portuguese  
Psychology  
Public Relations (Communication)  
Recreation and Sports Management  
Religious Studies  
Social Work  
Sociology  
Spanish  
Women’s Studies





# Life on Campus

As a Global First Year (G1Y) student, you will live in a centrally located dorm with fully furnished rooms and air conditioning. Your classes, your dining halls, and your fun – all close by!

FIU G1Y students are guaranteed housing, and students will be placed in dorms based on availability.

Everglades Hall

## SAMPLE RESIDENCE HALL

Everything you need is right on campus! FIU's residence halls are located conveniently around campus, giving you easy access to your classes, transportation, campus restaurants and other amenities.

Students living in FIU's residences halls have access to lounges for studying, socializing and playing games, as well as free wireless internet and laundry rooms. Resident Assistants are on hand to provide help with questions and to plan activities. Students have access to basketball and volleyball courts, as well as a swimming pool!

Students also have unlimited access to the Fresh Food Company and two Living & Learning Communities. Living on campus makes it easy to make friends and excel academically.

### Sample Hall:

- ▶ 800 Residents
- ▶ 20 Resident Assistants
- ▶ Front Desk with Desk Assistants
- ▶ Unlimited access to Fresh Foods Company

### Sample Room:

Each suite is fully furnished, air-conditioned, and has:

- ▶ Four individual bedrooms
- ▶ Refrigerator
- ▶ Wi-Fi
- ▶ Cable TV
- ▶ Laundry room
- ▶ Twin mattresses
- ▶ Two shared bathrooms



Sample Floor Plan

# This Is Real-World Success

## The G1Y Career Accelerator Program

Looking to get a head start on your professional future? If you choose to participate in our Career Accelerator Program alongside the G1Y and your degree, you will be heading for career success from day one. You'll enhance your employability, gain skills to advance your academic performance and access opportunities for real-world work placement either while acquiring your degree or upon graduation.

The G1Y Career Accelerator Program lasts for two or more years and is tailored to the unique experience of international students. It will help you develop the skills to stand out in a crowded global job market: exploring career interests, practicing interview skills, developing a powerful resumé or CV and connecting with potential employers.

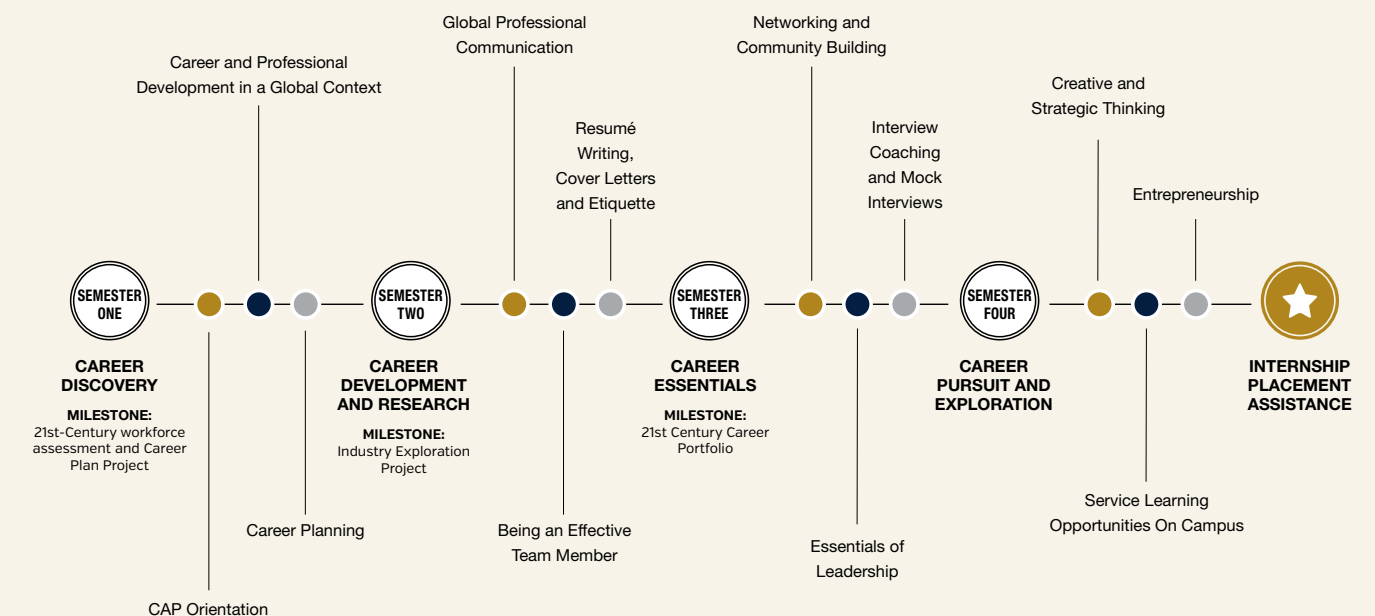
To be eligible for internship placement assistance, students must:

- Successfully complete all required elements of the Career Accelerator Program
- Have at least a 3.3 GPA
- Have maintained appropriate immigration status in the United States

Once you begin the program, you will have access to advisors who will help you to successfully navigate these requirements.

Visit [GlobalFIU.com](http://GlobalFIU.com) for more information.

## THE FIU GLOBAL CAREER ACCELERATOR PROGRAM



The above timeline outlines the main topics and activities delivered each semester. Additional career events, workshops and guest speakers will be announced at the start of the program.





# Deadlines, Dates & Fees

	Standard Application*	Global First Year		Pre-Sessional English Program
		3 Semesters	2 Semesters	
Tuition + Fees	\$18,905	\$24,400	\$22,400	<div>In need of additional English courses before enrolling in the Global First Year program? Enroll in the pre-sessional English language program through the English Language Institute (ELI). <b>Estimated tuition for recommended 14-week term: \$7,500.</b></div> <div>Once students successfully complete Level 5 of ELI they will progress into and pay tuition for the Global First Year - 3 Semester Program.</div> <div>Upon arrival, if students test into the ELI Levels 3, 4, or lower, they may need to take several modules before they are ready to progress into the G1Y.</div>
Housing	<div>Please visit <a href="http://admissions.fiu.edu/apply/international">admissions.fiu.edu/apply/international</a> for the most up-to-date information on standard entry costs.</div>	\$12,000	\$8,000	
Health Insurance		\$2,000	\$2,000	
Meals*		\$6,500	\$4,500	
Total		\$44,900	\$36,900	

\* Standard Application costs are based on Fall 2015 tuition. Please visit [admissions.fiu.edu](http://admissions.fiu.edu) for the most up-to-date information.

G1Y students are required by Florida law to take the SAT exam prior to progressing into their second year. However, there is no minimum score that students must achieve to progress.

## Spring 2016

	Standard Application	Global First Year		Pre-Sessional English Program
		3 Semesters	2 Semesters	
Application Deadline*	November 1, 2015	December 7, 2015	December 7, 2015	December 14, 2015
Move-In Date	January 8, 2016	January 5, 2016	January 5, 2016	January 12, 2016
Program Start Date	January 11, 2016	January 6, 2016	January 6, 2016	January 13, 2016

## Summer 2016

	Standard Application	Global First Year		Pre-Sessional English Program
		3 Semesters	2 Semesters	
Application Deadline*	April 4, 2016	April 11, 2016	April 11, 2016	April 21, 2016
Move-In Date	May 13, 2016	May 10, 2016	May 10, 2016	May 12, 2016
Program Start Date	May 16, 2016	May 11, 2016	May 11, 2016	May 13, 2016

## Fall 2016

	Standard Application	Global First Year		Pre-Sessional English Program
		3 Semesters	2 Semesters	
Application Deadline*	May 1, 2016	July 11, 2016	July 11, 2016	August 7, 2016
Move-In Date	August 19, 2016	August 15, 2016	August 15, 2016	September 6, 2016
Program Start Date	August 22, 2016	August 16, 2016	August 16, 2016	September 7, 2016

\* This is the deadline to submit all documents stated on your offer letter and is required for both academic acceptance and I-20 issuance. All necessary items must be received by admissions on or before this deadline or the student will be unable to enroll for the intended semester and will be encouraged to defer enrollment to the following semester.

\*\* For 2016, all dates and fees are estimates. Students should visit [www.globalfiu.com](http://www.globalfiu.com) for the most up-to-date costs and dates.

# How to Apply: Application Process & Policies

## STEP 1: COMPLETE YOUR APPLICATION

- Email your completed application to [admissions@globalfiu.com](mailto:admissions@globalfiu.com) or mail it to:  
**Florida International University**  
**FIU Global First Year**  
**11200 SW 8 St.**  
**MANGO 210**  
**Miami, FL 33199**

► Applying to FIU Standard Application? Visit <http://admissions.fiu.edu/apply/international>

## STEP 2: SUBMIT YOUR OFFICIAL TRANSCRIPTS

- Mail them to:  
**Florida International University**  
**FIU Global First Year**  
**11200 SW 8 St.**  
**MANGO 210**  
**Miami, FL 33199**

- You may also submit your official transcripts in person upon arrival on campus. If submitting originals upon arrival, the original transcripts must be viewed by an official FIU Global First Year recruiter, public notary or regional office and certified with a stamp on the application. Once certified, these can be scanned and emailed with your application to [admissions@globalfiu.com](mailto:admissions@globalfiu.com). *Please note: Students cannot enroll until originals have been received.*

## STEP 3: SUBMIT PROOF OF ENGLISH LANGUAGE ABILITY

- If your native language is not English, please submit proof of your English-language ability.
- A full list of accepted tests can be found at [globalfiu.com/accepted-exams](http://globalfiu.com/accepted-exams)

## STEP 4: PROVIDE CERTIFICATION OF FINANCES

- After your conditional offer is received, you need to submit any additional documents requested in the offer.
- You must also provide a Certificate of Finances and accompanying documentation from your bank showing sufficient funds.
- Finally, you must pay a deposit of \$2,000 USD. See Terms and Conditions on page 16 for refund information.

## STEP 5: FORMALLY ACCEPT YOUR OFFER OF ADMISSION

- First, have a celebration! Then, sign your acceptance of the offer and e-mail to [admissions@globalfiu.com](mailto:admissions@globalfiu.com).

## STEP 6: GET YOUR VISA

- Once you are officially admitted to a program, the admissions team at FIU Global First Year will send the required documents to apply for visa processing with the U.S. embassy in your country.

We have regional teams located across the world ready to assist you with your FIU Global First Year application and give you advice and guidance throughout the admissions process. Contact [admissions@globalfiu.com](mailto:admissions@globalfiu.com) and we will direct your query to our team in your region.







## Global First Year Application

### PERSONAL DETAILS

Name must appear exactly as shown in applicant's passport.

Title:	Gender:
Family name:	
Given names:	
Preferred name:	
Date of birth (DD/MM/YYYY):	
Country of birth:	
Country of citizenship:	
City of birth:	
Passport number:	
Passport date of expiry:	

### CONTACT DETAILS

Permanent, non-U.S. home address (mandatory):		
Address:		
City:		
Region:		
State:		
Province:		
Postal code:		
Country:		
Applicant's mailing address in the USA (if applicable):		
City:	State:	Postal code:
Mobile telephone:		
Home telephone:		
Applicant's personal email (mandatory):		

Recruiter or agent name (if applicable):
Recruiter's email:
Recruiter's address:
Address:
City:
Region:
State:
Province:
Postal code:
Country:

### EMERGENCY CONTACT

Name:	Relationship:
Address:	
Home telephone:	
Mobile telephone:	
Email:	

Agent Stamp Here
------------------

### SELECT YOUR ROUTE TO FIU

<input type="checkbox"/> Global First Year – 3 Semester Program
<input type="checkbox"/> Global First Year – 2 Semester Program
<input type="checkbox"/> Pre-Sessional English (ELI) (for progression into the Global First Year)

### INTENDED MAJOR

Write in major: \_\_\_\_\_

See List of Degrees on page 9.

### INTENDED START DATE

Indicate year and semester you wish to start.

Year:	<input type="checkbox"/> January (Spring)	<input type="checkbox"/> May (Summer)	<input type="checkbox"/> August (Fall)
-------	---	---------------------------------------	--

### EDUCATION DETAILS

#### English Proficiency

IELTS band (total) score:	
Date taken or scheduled (DD/MM/YY):	
IELTS section scores:	
TOEFL total score:	
Date taken or scheduled (DD/MM/YY):	
TOEFL subtest scores:	
Native language:	Years of English study:
Have you taken another English-language exam? <input type="checkbox"/> Yes <input type="checkbox"/> No If yes, please provide copies of results with application.	

#### Form I-20

Do you have a Form I-20 from another institution in the United States?
<input type="checkbox"/> Yes <input type="checkbox"/> No <input type="checkbox"/> Expired
If yes or expired please provide a copy with your application materials.

#### Education History

Name and address of secondary school attended:
City of secondary school:
Country of secondary school:
From (DD/MM/YY): To (DD/MM/YY):
Anticipated date of secondary school graduation:
Have you attended additional secondary schools? <input type="checkbox"/> Yes <input type="checkbox"/> No If yes, please provide transcripts with application.
Language of instruction:

Name and address of post-secondary school attended:
City of post-secondary school:
Country of post-secondary school:
From (DD/MM/YY): To (DD/MM/YY):
Anticipated date of graduation/transfer:
Language of instruction:
Have you attended additional post-secondary schools? <input type="checkbox"/> Yes <input type="checkbox"/> No If yes, please provide transcripts with application.

### EDUCATION DETAILS (CONTINUED)

#### Advanced Tests (if applicable)

SAT total score:	SAT date (DD/MM/YY):
CR score:	Math score:
ACT scores:	ACT date (DD/MM/YY):
Composite:	Math: English:
Other test:	Other test date (DD/MM/YY):

### TRANSFER INFORMATION

Required if transferring from another educational institution in United States.

City/State/Country: \_\_\_\_\_

From DD/MM/YY to DD/MM/YY \_\_\_\_\_

Degree earned: \_\_\_\_\_

Transferring school: \_\_\_\_\_

SEVIS #: \_\_\_\_\_

### DEPENDENTS

Do you have dependents you would like to add to your I-20?

☐ Yes ☐ No

### AIRPORT RECEPTION

Do you require airport pickup? After you book your travel, please visit **www.GlobalFIU.com/Flight** and enter your arrival details and flight information.

☐ Yes ☐ No

### MEDICAL INSURANCE REQUIREMENT

(This section must be completed.)

☐ I understand G1Y will provide a required 12 months of medical coverage upon my arrival in the United States, at a cost of \$2,000 USD. At the end of 12 months, I will be required to extend the initial coverage. This fee changes annually and is correct at the time of printing.

### SPONSORED STUDENTS

Please indicate if any part of your education will sponsored.

Type of sponsorship (for example: tuition, fees, living expenses, other):
Name of sponsoring organization:

### OTHER INFORMATION

How did you first learn about FIU?

☐ Exhibition or seminar

☐ Newspaper or magazine

☐ Recommendation from friend or colleague

☐ Recommendation from recruiter

Name: \_\_\_\_\_

☐ Internet search or advertisement

☐ Recommendation from family member

### ADDITIONAL APPLICATION MATERIALS REQUIRED

☐ Copy of passport (if available)

☐ Copy of academic transcript

☐ Copy of official English assessment score report

☐ Copy of bank statements

Please note: Accepted students must bring original copies of all materials when arriving on campus.

### PERSONAL STATEMENT

1. Have you ever been subject to disciplinary action or do you currently have a disciplinary charge pending by any educational institution for academic misconduct, such as cheating? (You do not need to disclose any academic dismissal, suspension or probation that was due to poor grades.)

☐ Yes ☐ No

2. Have you ever been subject to disciplinary action or do you currently have a disciplinary charge pending by any educational institution for behavior misconduct, such as fighting?

☐ Yes ☐ No

3. Have you ever been convicted of, or charged with, a criminal offense or are you currently the subject of any criminal proceeding?

☐ Yes ☐ No

If you have answered yes to either of the above questions, please submit a separate sheet that gives the circumstances and approximate date of each incident.

### DECLARATION

I declare that the information I have supplied on this form is complete and correct. I understand that giving false or incomplete information may lead to the refusal of my application or cancellation of enrollment and/or loss of visa status.

I have read and understand the published course information in the brochure or website, and I have sufficient information about Florida International University (FIU) and the Global First Year (G1Y) to make an informed enrollment decision.

I give FIU and the G1Y permission to obtain official records from any educational institution attended by me. I give FIU permission to provide the G1Y with any information pertaining to my application of study, my ongoing academic progress, and my results and attendance for the purposes of evaluating my admissibility and progression status.

I grant FIU and the G1Y permission to provide my parent(s), guardian(s), sponsor(s), and recruiter, when requested, with any information pertaining to my application to study, ongoing academic progress, results, attendance and disciplinary record for the purpose of facilitating family communications about the university experience.

I understand that after I commence my studies with the G1Y, I will need to successfully complete the program and meet the minimum required progression standards before I can continue my studies at FIU.

I understand that tuition and fees may change without notice. I accept responsibility for payment of all relevant tuition and fees, and I agree to abide by the G1Y refund policy.

I understand that living expenses in the United States may be higher than in my own country, and I confirm that I have the financial ability to meet these costs.

I have read and understand the published program terms and conditions on page 16 and understand that the most updated copy may be found at [www.GlobalFIU.com](http://www.GlobalFIU.com).

### APPLICANT'S SIGNATURE

Date (DD/MM/YY):

### PARENT OR GUARDIAN SIGNATURE (if applicant is under 18)

Date (DD/MM/YY):

### APPLICATION SUBMISSION

Scan and email completed application to **admissions@globalfiu.com**.

### OFFICE USE ONLY

Application received:
Application number:



# Florida International University Global First Year (FIU G1Y) Terms and Conditions

1. Florida International University's Global First Year ("FIU G1Y" or "G1Y") students should read these terms and conditions carefully prior to submitting an application. In addition to these terms and conditions, as students at Florida International University (FIU), all FIU G1Y students are bound by the rules and regulations governing FIU, as those may be amended from time to time. The most recent FIU rules can be found here: [http://catalog.fiu.edu/2015\\_2016/undergraduate/Admission\\_and\\_Registration\\_Information/Undergraduate\\_Rules\\_and\\_Regulations.pdf](http://catalog.fiu.edu/2015_2016/undergraduate/Admission_and_Registration_Information/Undergraduate_Rules_and_Regulations.pdf)
2. FIU and FIU G1Y reserve the right to amend these terms and conditions from time to time. At all times, students will be required to comply with the then-current terms and conditions. FIU G1Y's current terms and conditions may be found at: [www.globalfiu.com/terms-and-conditions](http://www.globalfiu.com/terms-and-conditions).
3. Application: Students may apply to the FIU G1Y, the FIU Intensive English program at ELI (English Language Institute), or for direct admission to FIU. If you decide to apply to any of these programs, be sure to use the application that is specific to the program you select. Each application contains terms and conditions governing the specific program, and students acknowledge by submitting an application that they agree to the terms and conditions of the respective program. Links to applicable applications and terms and conditions can be found here: [www.globalfiu.com/terms-and-conditions](http://www.globalfiu.com/terms-and-conditions).
4. Transfer Credits. Students who have completed post-secondary credit hours are prohibited from applying to FIU G1Y.
5. Students who are admitted to the FIU G1Y will receive a written offer letter with details on accepting the offer, paying the program deposit and arriving on campus.
6. Tuition, fees, and accommodation payment: Following payment of the deposit, students must pay the remaining outstanding balance by the following posted payment deadline for the semester in which they enroll.
- Spring 2016: December 22, 2015  
Summer 2016: April 26, 2016  
Fall 2016: August 1, 2016
- FIU G1Y has the right to amend prices due to University actions, tax increases, governmental actions, or other events beyond its control.
7. Accommodation and meal plan: All FIU G1Y students are required to live in an FIU G1Y residence hall. All FIU G1Y students' housing commitments run for the entire length of their program unless otherwise noted. Depending on when students cancel the G1Y program, students may be eligible for a full or partial accommodation refund for any semesters not attended, although additional cancellation fees may apply. If an FIU G1Y student is unable to live on campus, they must submit the FIU G1Y Housing Waiver Form along with an explanation when they send their official acceptance of their FIU G1Y offer, and this requirement will only be waived in extenuating circumstances. Students living in FIU G1Y residential halls are also required to purchase a G1Y-designated meal plan as a condition of enrollment. The cost of the meal plan is nonrefundable.
8. Health insurance: All international students studying at FIU are required to be covered by health insurance that meets the U.S. government, Florida State and FIU requirements.
- a. At the time of their application, students are required to purchase coverage from a G1Y-designated health plan as a condition of enrollment.
- b. Prior to orientation, all students must have a completed FIU Student Health Services Immunization Form documenting proof of immunity to measles (rubeola), mumps and German measles (rubella) [MMR], and either proof of immunization against meningitis and hepatitis B or a signed waiver declining these two vaccines. Mandatory Immunization Forms may be obtained through the FIU Student Health Services website (<http://studenthealth.fiu.edu/forms/forms-immunization.html>). Students must have immunization documentation prior to class start date to live on campus.
- c. The cost of health insurance is nonrefundable. Not all services are covered by insurance, and the student is responsible for any outstanding balances for non-covered services.
9. Airport transfers: Requests for airport transfer should be made at least two weeks in advance by visiting [www.GlobalFIU.com/welcome](http://www.GlobalFIU.com/welcome). Airport transfers are available for the student's initial arrival on campus for flights arriving at Miami International Airport (MIA). FIU G1Y cannot guarantee a reservation for a request made less than two weeks in advance; however, staff will make every attempt to accommodate late requests. In the event that a flight is canceled or delayed, students must call the emergency telephone number published in the Pre-

- Departure Guide to inform G1Y's staff of the new arrival date and time. Please see Section 21 for the airport transfer cancellation policy.
10. Cancellation, change, curtailment, or withdrawal: Students who cancel their FIU G1Y course prior to arrival on FIU's campus may request a full refund of deposit, tuition and fees pursuant to Section 21.. Students will be eligible for a refund only if they submit documentation of visa denial with written notification to the FIU G1Y prior to the move in date. After the start of the G1Y program orientation, students may be eligible for the following partial refunds: 90% refund during the 1st week of class, 50% refund during the 2nd, 3rd and 4th weeks of classes. After the 4th week of classes of your first semester of the program, there will be no refunds for the remainder of the program duration absent exceptional circumstances. The no refund dates for each program start date are:
- Spring 2016: February 5, 2016  
Summer 2016: June 10, 2016  
Fall 2016: September 16, 2016
- Intensive English Spring 2016: February 23, 2016  
Intensive English Summer 2016: June 10, 2016  
Intensive English Fall 2016: October 7, 2016
11. Public holidays and vacation: Classes are normally not held on public holidays and most school facilities will be closed. Classes will not be held on designated school vacations. FIU G1Y will not make reimbursements for classes not offered.
12. Absences: F1 students must comply with all applicable USCIS regulations related to study on a student visa at FIU, including attendance requirements. Failure to meet attendance requirements may lead to penalties, including loss of immigration status. Any student who is absent during the program or loses immigration status due to absences will not be eligible for a refund.
13. Academic criteria: Students are accepted into the FIU G1Y with the strict understanding that progression through the FIU G1Y and successful completion of any program will require satisfactory attendance and successful attainment of specified progression grades. Progression criteria can be found at: [www.globalfiu.com/progression-criteria](http://www.globalfiu.com/progression-criteria). Students who do not meet the criteria for successful completion will not be allowed to proceed. Students may be offered advice on suitable alternative options, which may or may not include retaking courses or repeating certain courses. These alternative options may involve additional time and costs, including tuition and accommodation fees.
14. Academic resources: All books and learning materials need to be purchased by G1Y students upon arrival at FIU.
15. Student conduct: All FIU G1Y students are required to follow FIU's policies, rules and regulations. Any student who commits a criminal offense, violates campus rules, has poor attendance, or fails to meet program requirements may be expelled or suspended. No refund will be given in cases of expulsion. FIU's Student Handbook (<http://globaldatebooksonline.com/tlfpbooks2014/fiu2014>) provides a frame- work of standard acceptable behavior for students. Students are responsible for understanding and complying with these policies. All students studying at FIU have the right to be treated with respect and courtesy by FIU staff and fellow students in an environment free from harassment and conducive to learning. FIU expects G1Y students to abide by these policies by accepting responsibility for their behavior and conducting themselves in a professional manner at all times, treating fellow students and staff with respect, honesty, and courtesy.
16. Refunds: FIU G1Y will only make refunds in U.S. dollars, minus bank transfer and processing fees, and will make such refunds in the manner in which G1Y was originally paid and to the account of the party or parties who made such payment(s). All refunds will be made to eligible parties within 45 days of written notice.
17. Grievance procedures, appeals, or complaints: Students must follow the policy and procedures for filing complaints, grievances and appeals in a constructive and timely manner. The FIU student grievance policy and procedure can be found at <http://online.fiu.edu/student/resources/student-complaint-process.php>.
18. Academic performance: FIU's Academic Policies cover many aspects of academic life. These policies outline the required standards for academic performance and maintaining good academic standing. These policies can be found at <http://online.fiu.edu/student/resources/policies.php>.
19. Photography, filming, and sound recording: FIU G1Y or its representatives, affiliates, successors and related companies may arrange to photograph or shoot video footage of students for

- purposes of advertising, public relations and/or promotion in any medium throughout the world, including on social media sites and on the internet. Any student who does not wish to participate should advise us in writing and state at the time of the photography or video shooting the wish not to participate. By accepting these terms and conditions you are indicating your consent to use these photographs or video footage without further consent or notifications unless you follow the above opt-out requirements.
20. Force majeure: FIU and the FIU G1Y will not be liable in cases where FIU and/or FIU G1Y is unable to fulfill any services because of fire, natural disaster, national emergency, act of government, acts of war or terrorism, failure of suppliers or subcontractors, labor disputes or any other reasons that are beyond FIU's or G1Y's control.
21. Student F1 visa holders: F1 visa holders are required to provide FIU with a current residential address and telephone number at all times. Students who fail to meet attendance requirements, continue their enrollment, or maintain satisfactory academic progress will be reported to the U.S. Department of Homeland Security (DHS). Information collected by FIU and the FIU G1Y that personally identifies a student and information regarding a student's course progress may be shared with DHS, state and accrediting agencies, designated authorities, students' parents, recruiters, sponsors, FIU and FIU G1Y staff and representatives. This information may include personal and contact details, course enrollment details and changes, and circumstances of any suspected breach by the student of any FIU or FIU G1Y policies and/or any DHS rules or regulations.
22. Cancellation: "Cancellation Period" refers to the period up to the start date of the first course you are attending. Cancellations must be made during the Cancellation Period in writing, and in these cases, provided the student never attends, 100% of the tuition fees will be refunded. In all cases, the courier fee (if utilized), enrollment fee and any other service charges (e.g., airport transfer fee, medical insurance, campus fee, program supplement fee, etc.) are nonrefundable. Please see Section 7 for the accommodation cancellation policy and Section 10 for cancellations after the Cancellation Period.
23. Liability: The liability of the FIU G1Y, its operator and its group companies, their directors, officers, employees, affiliates, agents, and partners with respect to losses arising from negligence (except where such liability cannot be excluded as a matter of law), breach of contract, or otherwise will be limited in all circumstances to the full amount paid to FIU, G1Y, or the relevant group company by the relevant student for the particular program. Such companies and persons will in no circumstances have any liability for indirect or consequential losses or damages. Any dispute, claim or other matter arising will be subject to the jurisdiction and laws of the United States District Court for the Southern District of Florida. By signing these terms and conditions, the student consents to and accepts the jurisdiction of such court for the purpose of any such action or proceeding and agrees to waive any objection to venue being laid therein.
24. In accordance with the Family Educational Rights and Privacy Act of 1974 (FERPA), the undersigned student hereby permits FIU and FIU G1Y to disclose personally identifiable information, including educational records, financial information, and attendance records to the G1Y, its operator, Shorelight-Scientia, LLC, its parent Shorelight Education, LLC, and their group companies (the "Operator"). The undersigned hereby also grants FIU and the Operator permission to provide the student's parent(s), guardian(s), recruiter(s) and sponsor(s) with information pertaining to their application, academic progress, results, attendance and disciplinary record for the purpose of facilitating family communications about the university experience. These permissions will remain in effect during the undersigned student's tenure at G1Y and FIU.
25. Students must be 17 years old by the move-in date (Spring 2016: January 5, 2016; Summer 2016: May 10, 2016; Fall 2016: August 15, 2016) in order to participate in the program. Students who are under the age of 18 will be required to obtain the signature and consent of a parent or legal guardian on their application before they are able to participate in the program.
26. Registration: FIU G1Y students must follow the FIU University Core Curriculum (UCC) according to student's intended major(s). Students are registered in the UCC by G1Y. Registration is determined primarily by student's projected major and ALEKS score. Students must complete the ALEKS exam in their home country prior to move-in date and will have the option to retake the exam one additional time during the FIU G1Y orientation to improve the test score. Course schedules are final and changes will only be considered by the Associate Academic Director.

# Global First Year Entry Requirements by Country

Please visit [www.GlobalFIU.com](http://www.GlobalFIU.com) for the most up-to-date listing of entry requirements.

COUNTRY	REQUIREMENTS
ANGOLA	Certificado de Habilitações Literárias with an average subject score of 12
ARGENTINA	Bachiller with a 4/10 or higher
AUSTRALIA	Year 12 certificates with an average of C+ or 63% or higher; grades and certificates vary by state and territory
BAHRAIN	Tawjahiya Secondary School Certificate with a 75% average or higher
BANGLADESH	Higher Secondary Certificate (HSC) with a 50% average
BOTSWANA	Botswana General Certificate of Secondary Education with a 2nd Class, 2nd Division, or C average
BRAZIL	Certificado de Concuseo de Segundo Grau with an average of 5/10 or higher
BRUNEI	Brunei-Cambridge Certificate of Education Ordinary Level with a C average or Third Class Honors
CAMBODIA	Baccalauréat with D grade or 60% or higher
CANADA	Grade averages will be assessed according to provincial variations and admission requirements for your FIU program of study
CHILE	Licencia de Educacion Media, with an average of 4/7 or higher
CHINA	A minimum grade average of 65% and earned an Upper Middle School Graduation Certificate (Gao San*)
COLOMBIA	Bachiller or Bachillerato ot Titulo de Bechiller Academico 6/10 or 3/5 or higher
ECUADOR	Bachillerato or Titulo de Bachiller with 7/10 or 14/20
EGYPT	Thanaweya Amma or General Secondary Education Certificate with a 64% or pass
FIJI	Fiji School Leaving Certificate or Form 7 Certificate with a 6 or 64% average or higher
FRANCE	Baccalauréat Général with an overall score of 10.1 or higher
GCE	Equivalent of 150 UCAS points in a combination of AS and A level results and high school transcripts showing college prep curriculum
GHANA	West African School Certificate or Senior Secondary School Certificate Examination is also required with a C7 or better in a minimum of 5 subjects
HONG KONG	HKDSE - Level 3 or higher in Liberal Studies; Level 2 or higher in other required subjects or two optional subjects. If applicable, 0 and A level in at least 5 academic subjects
INDIA	Ten and Twelve exams, year 11 transcripts, 50% average or higher
INDONESIA	Surat Tanda Tanat Belajar (STTB) or Sekolah Menengah Unum Tingkat Atas (SMA) GPA of 6 or higher in 5 academic subjects
INTERNATIONAL BACCALAUREATE	Completion with an overall 25 or higher or IB Score 4.0 or higher in each subject
IRAN	Peesh-daneshgahii Diplome (High School Diploma) with 13 average or higher
JAPAN	Kotogakko Sotsugyo Shosho (Upper Secondary School Leaving Certificate) with a 3 or C+ average
JORDAN	Tawjihi -Academic (General Secondary Education Certificate) with 65% average or higher
KAZAKHSTAN	Attestat with 3.5 or higher average
KENYA	Kenya Certificate of Secondary Education (KCSE) with a C+ or 7 average or higher
KOREA, REPUBLIC OF (South Korea)	Innungye Kodung Hakkyo (High School Certificate) with a 4.5 and an average weighted rank between 1 and 5; Korean GED with a 77% average
KUWAIT	Shahadat Al-Thanawiya-Al-A'ama (Secondary School Diploma) with a 75% average in academic courses
LAOS	Baccalaureat II with a score of 13.9 or higher

\*Gao Kao is not required for admission into the AAP program. The high school graduation certificate Biye Zhengshu is required.



MACAU	60/100 or 11 in schools using the Portuguese system
MALAYSIA	SPM Sijil Pelajaran Malaysia (Matriculation Certificate or Certificate of Education) with B, or a 7 or higher
MAURITIOUS	GCE O Level, C in 5 subjects
MEXICO	Certificado de Bachillerato (Baccalaureate Certificate) with a 7.0 average or higher
MONGOLIA	School Leaving Certificate (Gerchilgee) after 12 years with e.5 (79%) (C+) average or higher
MYANMAR	Basic Education Standard Exam Diploma A (Academic) with a 3 or 50% average or higher
NEPAL	Higher Secondary Certificate (HSC) with 40% (second division) or higher
NIGERIA	West African School Certificate or National Examinations Council exam with a 7 or better in a minimum of 5 subjects
OMAN	Thanawiya Amma (General Secondary School Certificate) with 75% average or better
PAKISTAN	Higher Secondary Certificate (HSC) with 45% (2nd Class) average or above
PANAMA	Diploma de Bachiller with a 3.5 or 75% or better
PERU	Bachillerato Academic or Certificado de Educacion Secundaria Comun Completa with 12/20
PHILIPPINES	High School Diploma with 80% (Grade C+) or higher
QATAR	Al-Thanawiya Aama Qatari (General Secondary School Certificate) with 69% average or higher
RUSSIA	Attestat o srednem (polnom) obschem obrazovanii (Certificate of Completion) General Secondary Education with a 3.5 GPA
SAUDI ARABIA	Shahadat Al-Marhat Al-Thanawiyat (General Education Secondary Certificate) with a 75% or higher
SINGAPORE	Singapore Cambridge GCE O Level – 5 academic subjects with C or higher or GCE A Level 3 or higher
SOUTH AFRICA	Senior Certificate with Matriculation Endorsement with D average or matriculation endorsement with 55% or higher
SRI LANKA	Sri Lanka Collegiate GCE A Levels with C grade in 3 subjects or 55% and above and Senior Secondary School GCE O Levels with 5 passes, C grade, or 55%
SWEDEN	Avgångsbetyg/Slutbetyg fran Gymnasieskola (Certificate from Upper Secondary School) with 'G' grade (Godkand) in 5 academic subjects
TAIWAN	Senior High School Diploma or certificate of graduation 65% or higher
TANZANIA	Certificate of Secondary Education (CSE) with minimum D/4 average or higher
THAILAND	Mathayom VI (Secondary) Certificate/M6 with a 65% average or higher
TURKEY	Lise Diplomasi (Secondary School [Lyceum] Diploma) with a 3.5 (orta) or 65% average or higher
UAE	Tawjihiyya (General Secondary Education Certificate) with a 70% average or higher
UGANDA	Uganda Advanced Certificate of Education with a minimum of 2 Principal Passing grades of D or higher and at least 1 subsidiary pass in a college preparatory subject. In addition, Uganda Certificate of Education with a C (7) average or higher or General Certificate of Education Level (O Level) Examination Certificate with 5 academic subjects passed is required.
UKRAINE	Attestat Certificate of Complete General Secondary Education or Matriculation Certificate with a 3.5/6 or higher
VENEZUELA	Bachiller or Título de Educacion Media General en Ciencias with a 12.5/20 average or better
VIETNAM	Baccalaureat II (Diploma Hoặc Bằng Tốt Nghiệp Trung Học Tịch Bo Văn Hoa)
WEST AFRICAN EXAM CERTIFICATE	Certificate Completion with a 7 or better in a minimum of 5 subjects
ZAMBIA	Zambian School Certificate Examination and GCE–O Level with 5 academic subjects passed with grade of C or 6 or higher
ZIMBABWE	See General Certificate of Education–Ordinary Level with 5 academic subjects pass with grade of C or 6 or higher

## Selected Major Requirements

Students in the Global First Year progress seamlessly on to their second year in the College of Arts and Sciences. Students should refer to the list of Progression Requirements for degrees that are not in the College of Arts and Sciences to see if there are additional requirements for their degree of choice. Some programs may have selective admissions or additional pre-requisites.

These progression requirements are correct at the time of printing, but students should meet with their academic advisor upon arriving on campus for full details of progression requirements into their chosen degree.

Track	Major	Minimum GPA to Declare Major	Selected Major Requirement
STEM Field & Computer Science	Biology (BS)	2.0	Must be able to place in MAC 2311 (Calculus I) or higher.
	Biomedical Engineering (BS)	2.0	Must be able to place in MAC 2311 (Calculus I) or higher to declare a major in biomedical engineering; first-time in college students must also achieve a score of 75 or higher on the ALEKS math placement assessment. Students must declare this major their freshman year.
	Chemistry (BA) (BS)	2.0	Must be able to place in MAC 2311 (Calculus I) or higher.
	Civil Engineering (BS)	2.0	Must be able to place in MAC 2311 (Calculus I) or higher to declare a major in civil engineering; first-time in college students must also achieve a score of 75 or higher on the ALEKS math placement assessment. Students must earn a minimum grade of C in all math, physics and all major courses.
	Computer Science (BS)	2.0	Must be able to place in MAC 2311 (Calculus I) or higher to declare a major in computer science; first-time in college students must also achieve a score of 75 or higher on the ALEKS math placement assessment. Students must earn a minimum grade of C in all math, physics and all major courses.
	Computer Engineering (BS)	2.3	Must be able to place in MAC 2311 (Calculus I) or higher to declare a major in computer engineering; first-time in college students must also achieve a score of 75 or higher on the ALEKS math placement assessment.
	Dietetics and Nutrition (Didactic Program)	2.7	Grades C or better in all Science and the following Pre-Major Courses: CHM 1045/L, CHM1046/L, BSC 1010, HUN 2201.
	Earth Sciences (BA)	2.0	Must be able to place in MAC 2311 (Calculus I) or higher.
	Electrical Engineering (BS)	2.3	Must be able to place in MAC 2311 (Calculus I) or higher to declare a major in computer engineering; first-time in college students must also achieve a score of 75 or higher on the ALEKS math placement assessment. Students must earn a minimum grade of C in all math, physics and chemistry.
	Geosciences (BS)	2.5	Must be able to place in MAC 2311 (Calculus I) or higher.
	Information Technology (BS)	2.0	Earn a grade of "C" or higher in all major/core courses within their major area of study.
	Marine Biology (BS)	2.0	Must complete re-requisite courses before declaring major.
	Mathematics/Statistics (BS)	2.0	Must complete pre-requisite courses before declaring major.
	Mechanical Engineering (BS)	2.3	Must be able to place into MAC 2311 (Calculus I) or higher.
	Physics (BA) (BS)	2.0	Must be able to place into MAC 2311 (Calculus I) or higher.
Business, Finance & Economics	Accounting (Bachelor of Accounting)	2.5	All College of Business majors are Limited Access Majors.
	Business Administration (BBA)	2.5	All College of Business majors are Limited Access Majors.
	Construction Management (BS)	2.0	Must be able to place in MAC 2311 (Calculus I) or higher to declare a major in construction management; first-time in college students must also achieve a score of 75 or higher on the ALEKS math placement assessment.
	Economics	2.0	Must be able to place in MAC 1105 (College Algebra) or higher.
	Environmental Engineering (BS)	2.0	Must be able to place in MAC 2311 (Calculus I) or higher to declare a major in environmental engineering; first-time in college students must also achieve a score of 75 or higher on the ALEKS math placement assessment.
	Finance (BBA)	2.5	All College of Business majors are Limited Access Majors. Must earn a grade of "C" or higher in all major/core courses within their major area of study
	Human Resources Management (BBA)	2.5	All College of Business majors are Limited Access Majors. Must pass OR be currently taking and passing MAC 2311 [Calculus I] or equivalent courses.
	International Business (BBA)	2.5	All College of Business majors are Limited Access Majors. Must earn a grade of "C" or higher in all major/core courses within their major area of study.
	Management (BBA)	2.5	All College of Business majors are Limited Access Majors. Must earn a grade of "C" or higher in all major/core courses within their major area of study.
	Management of Information Systems (BBA)	2.5	All College of Business majors are Limited Access Majors; must earn a grade of "C" or higher in all major/core courses within their major area of study.
	Marketing (BBA)	2.5	All College of Business majors are Limited Access Majors; must earn a grade of "C" or higher in all major/core courses within their major area of study.
	Public Administration (BA)	2.0	
	Real Estate (BBA)	2.5	All College of Business majors are limited access majors; requires a minimum GPA, 60 credits, and successful completion of MMC 3003 (Mass Communication Orientation).



Track	Major	Minimum GPA to Declare Major	Selected Major Requirement
Social Sciences & Humanities	Advertising (BS in Communication)	3.0	Full admission requires completion of 60 credits, a minimum cumulative GPA of 3.0, and successful completion of MMC 3003 (Mass Communication Orientation); must also pass an English-language grammar test to take Mass Communication courses.
	Anthropology (BA)	2.0	
	Sociology (BA)	2.0	
	Asian Studies (BA)	2.0	
	Broadcast Media (BS in Communication)	3.0	Full admission requires completion of 60 credits, a minimum cumulative GPA of 3.0, and successful completion of MMC 3003 (Mass Communication Orientation); must also pass an English-language grammar test to take Mass Communication courses.
	Communication Arts (BA)	2.0	The Art, Art History, and Communication Arts majors only require that you fill out the Undergraduate University Application or Graduate University Application. You do not need to apply directly to the program and no audition is required.
	Criminal Justice (BA)	2.0	
	Digital Media Studies (BS in Communication)	3.0	Full admission into the major requires completion of 60 credits, a minimum cumulative GPA of 3.0, and successful completion of MMC 3003 (Mass Communication Orientation).
	English (BA)	2.0	
	French (BA)	2.0	
	Geography (BA)	2.0	
	History (BA)	2.0	
	Hospitality Administration/Management (BS in Hospitality Management)	2.8	Must pass OR be currently taking and passing MAC 2311 [Calculus II] or equivalent courses.
	Interdisciplinary Studies	2.0	
	International Relations (BA)	2.0	
	Journalism (BS in Communication)	3.0	Full admission requires completion of 60 credits, a minimum cumulative GPA of 3.0, and successful completion of MMC 3003 (Mass Communication Orientation); must also pass an English-language grammar test to take Mass Communication courses.
	Liberal Studies (BA)	2.0	
	Philosophy (BA)	2.0	
	Political Science (BA)	2.0	
	Portuguese (BA)	2.0	
	Public Relations (BS in Communication)	2.0	Full admission requires completion of 60 credits, a minimum cumulative GPA of 3.0, and successful completion of MMC 3003 (Mass Communication Orientation); must also pass an English-language grammar test to take Mass Communication courses.
	Recreation and Sports Management	2.0	
	Religious Studies (BA)	2.0	
	Social Work (BA)	2.0	
	Spanish (BA)	2.0	
	Women's Studies (BA)	2.0	

Note: A limited access program utilizes selective admission to limit program enrollment. Limited access status is justified where student demand exceeds available resources such as faculty, instructional facilities, equipment or specific accrediting requirements. Criteria for selective admission include indicators of ability, performance, creativity or talent to complete required work within the program.







**FIU** | FLORIDA  
INTERNATIONAL  
UNIVERSITY

**GLOBAL FIRST YEAR PROGRAM**

FIU Global First Year  
Florida International University  
11200 SW 8 Street  
MANGO 210  
Miami, FL 33174  
USA

+1.305.348.8053  
[admissions@globalfiu.com](mailto:admissions@globalfiu.com)