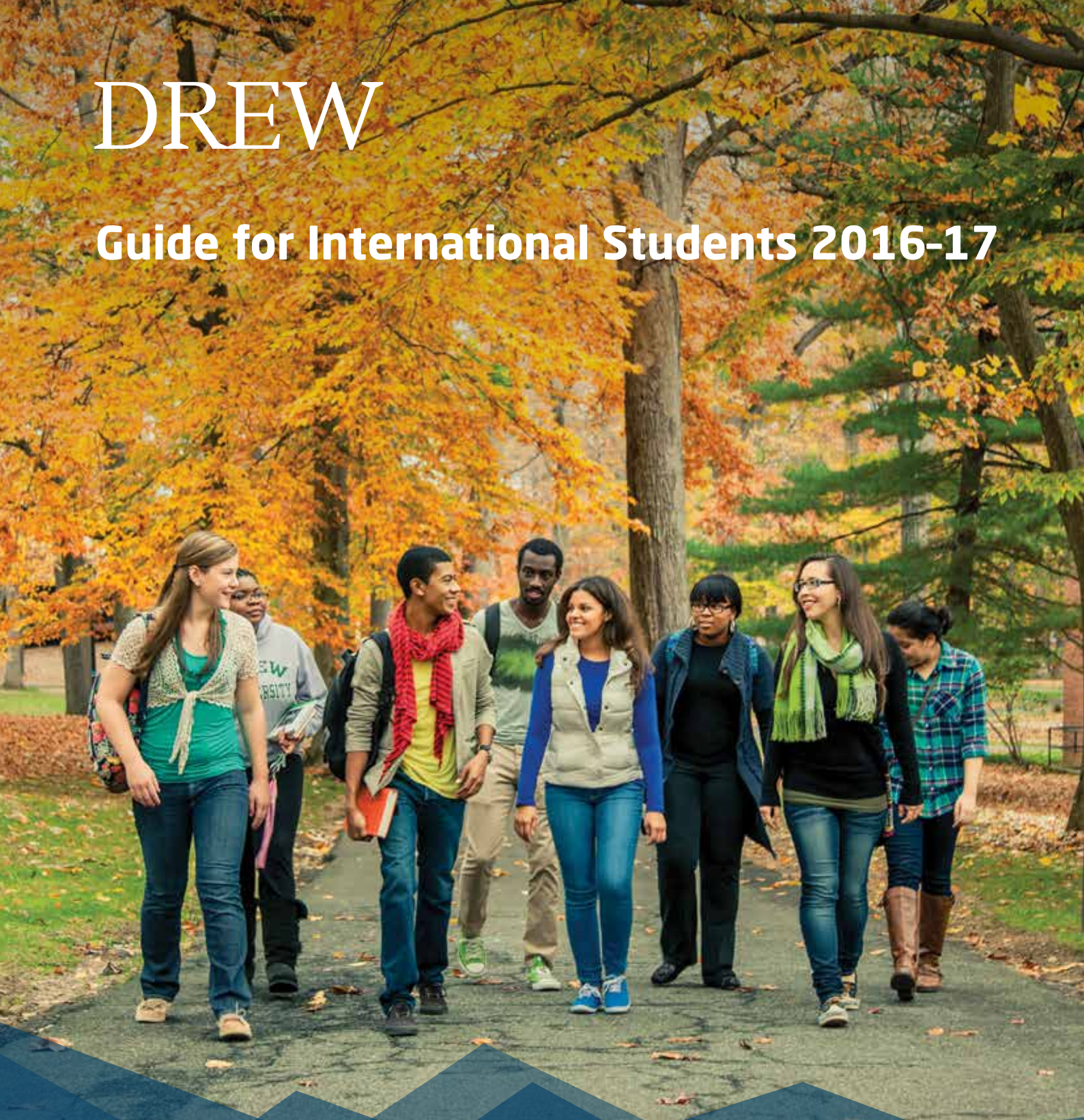


DREW

Guide for International Students 2016-17



Top 100

National Liberal Arts Colleges

Live and learn 47 minutes
from New York City



INTO  **NEW YORK**
AT DREW UNIVERSITY

Drew University

- 7 Where You Learn
- 9 Drew University
- 11 Semesters in New York City
- 13 How You Learn
- 15 What You Learn
- 17 Drew Academic Programs
- 19 INTO New York at Drew University

Undergraduate

- 23 Direct Entry
- 24 Pathway Programs
- 28 After Your Pathway Program

English Language Program

- 35 Academic English

Student Life

- 39 Drew University Student Services
- 41 INTO New York at Drew Student Services
- 43 Clubs and Sports
- 45 Housing and Dining
- 47 Work and Internships
- 49 Paths to the World
- 51 Alumni and Parents

Your Application

- 54 INTO New York at Drew Application Process
- 55 INTO New York at Drew Application
- 58 Affidavit of Support
- 59 Country Scales
- 60 English Waiver Guidelines
- 61 Dates, Tuition and Fees

 intohigher.com/newyork

 facebook.com/INTOnewyork

 twitter.com/INTO_NewYork

 instagram.com/INTO_NewYork

 myin.to/NYatDrewYouTube

 Download the mobile app:
intohigher.com/newyork/app

72% of classes at Drew
have fewer than 20
students



1:9

Drew University
teacher-to-student ratio

Welcome to Drew University!

Drew University puts you on the path to academic discovery, professional success and personal fulfillment. Consistently recognized as one of the top liberal arts universities in the country, Drew offers more than 50 fields of undergraduate study in the natural sciences, social sciences, humanities and the arts. Located less than an hour from New York City, our beautiful, wooded campus in Madison, New Jersey, strikes the perfect balance between a small-school environment and big-world experience.

Home to nearly 1,300 undergraduates, Drew attracts students from across the US and more than 50 countries. Our liberal arts approach provides a well-rounded education that emphasizes broad knowledge of the wider world. You'll explore a variety of subjects and develop essential skills that build the foundation for lifelong learning.

The hands-on, highly personalized interaction between students and professors is a cornerstone of the Drew community. Our rigorous yet nurturing environment will encourage you to passionately pursue your curiosities in and out of the classroom.

One of Drew's defining qualities is the extent to which students, faculty, staff and alumni engage with the world beyond campus. As one of the first colleges in the country to introduce semester-long, off-campus study programs, practical learning opportunities have been a vital part of the Drew undergraduate experience since the 1960s. Today, our students continue to apply knowledge in an active and purposeful way, through volunteer work, professional internships and on-campus research.

While Drew graduates go on to become leaders in their fields, success at Drew is defined by more than a degree. It is about developing critical thinkers and effective communicators that contribute to the advancement of a global community.

We invite you to be part of the world that Drew University is working to create.



"Your rigorous education at Drew University, shaped by unique learning experiences in the larger world, will develop the skills to prepare you for any challenge. We hope you will join our family and discover why Drew is an extraordinary place to live and learn."

MaryAnn Baenninger, PhD
President
Drew University

50+

Nationalities represented
on campus

Unique engineering dual
degree program with
Columbia University

Drew is more than a place to earn your degree—it is the beginning of a richly rewarding life that betters you as it betters society. Our challenging liberal arts curriculum, close student-faculty relationships and commitment to borderless education will allow you to take learning out of the classroom and into the world with you.

Top 100

Best Bang for the Buck
US Liberal Arts Colleges
(Washington Monthly 2015)



Drew received Carnegie Foundation's prestigious Community Engagement Classification in 2015

Drew University



#7

Best Theatre Arts program in the US
(Princeton Review 2015)

Exciting semester-long programs in New York City on Wall Street, at the UN and more



▲ New York City's Time Square is a short train ride from Drew's picturesque campus in Madison, NJ.



#24

Most livable small town in the US
(Livability 2015)



Easy access to Boston,
Philadelphia and Washington, DC

Where You Learn

Madison, New Jersey, offers the best of both worlds—the comforts of small-town living with the benefits of big city adventure. Just 47 minutes by train from midtown Manhattan, you'll have convenient access to all the action of New York City and a safe, peaceful campus to call home.

Drew Puts You at the Center of Everything

- Located in Madison, New Jersey—a safe, charming town of 16,000
- Just a short walk from campus to beautiful, historic downtown Madison
- Only 47 minutes by train from Madison to midtown Manhattan in New York City
- 20 minutes from Newark-Liberty International Airport
- Hundreds of Fortune 500 companies in the surrounding area
- Easy access to the East Coast corridor including Boston, Philadelphia and Washington, DC

Excitement and Opportunity Await You in New York City

- Attend Drew's semester-long programs at the United Nations, on Wall Street, in the contemporary art scene or the media capital of the world. See page 11 for more information.
- Explore iconic American landmarks like the Empire State Building, the Statue of Liberty and Times Square.
- Go shopping on 5th Avenue or see a Broadway show.
- Get an internship at one of the world's leading companies including Goldman Sachs, MTV, Pfizer or Ralph Lauren.



#98

Safest city in America
(Safewise 2015)



For more information, visit:
intohigher.com/newyork

Drew At-a-Glance

Founded: 1867

Enrollment: 2,369

International Students: 116

Countries Represented: 50+

Bachelor's Degrees: 30

Campus Size: 185 acres

Student-to-faculty Ratio: 9:1



94%

of Drew's faculty hold the highest degree in their field



Drew University

As one of the country's leading liberal arts universities, Drew attracts students from all over the US and more than 50 countries. From its unique, practical learning programs to the personal relationships with professors, the deep-rooted culture of collaboration and engagement with the greater community is clear from the day you step on campus.

About Drew University

Take full advantage of Drew's classic liberal arts education and real-world learning experiences. As a Drew student, you will be able to participate in our one-of-a-kind programs in New York City—at the United Nations, on Wall Street, in the contemporary art scene or the media capital of the world. If science is your interest, you'll have exceptional opportunities for advanced research in Drew's Summer Science Institute and RISE programs. No matter what you study, you will graduate with the skills that 21st century employers want.

Find out more about Drew at drew.edu

Full-time Professors Dedicated to Each Student

One of the defining characteristics of a liberal arts education is the commitment of faculty to teaching undergraduates.

One hundred percent of our faculty teach undergraduates, none of our courses are taught by teaching assistants, and every Drew student benefits from this commitment.

Personal Collaborative Relationships

Full-time faculty do more than teach undergraduates: they mentor, advise, debate, challenge and inspire them. Drew's professors care—about you and your learning.

World-class Faculty

Drew's faculty are not only passionate teachers, they are distinguished scholars who hold PhDs from the world's most prestigious institutions including Harvard, MIT, Columbia and Yale.

Direct Entry to Drew University

Students who meet specific language and academic requirements may apply directly to Drew University. Students who do not meet these requirements are encouraged to apply to INTO New York at Drew's Pathway or Academic English programs.

Undergraduate Pathway Programs

INTO New York at Drew's 2-year Undergraduate Pathway programs are ideal for international students who may need additional English language and academic preparation before continuing on to a degree program at Drew or transferring to other well-known universities. See page 24 for more information.

Academic English

INTO New York at Drew's Academic English program helps students acquire the English language skills for university study and attain academic, professional and personal goals. See page 35 for more information.

#17

Among US liberal arts colleges
in number of physical science
majors who earn doctorates
(National Science Foundation 2015)

One of the greenest
colleges in the US
(Princeton Review 2015)



▼ Meet members from places like Goldman Sachs, NYSE, Morgan Stanley, Federal Reserve and more.



▲ Contemporary art semester is required for art and art history majors, but is open to all students.

Semesters in New York

Our New York Semesters are your ticket into some of the city's most high-powered circles. You get credits and connections—at the United Nations, on Wall Street, in the world of contemporary art and the media capital of the world.

Semester at the United Nations

Spend time on the ground floor of geopolitics. Interview diplomats, learn about the inner workings of the UN and discuss the issues reshaping the international community on a daily basis. Drew's status as a non-governmental organization offers you unparalleled access. You won't just see the world turn; you'll learn how it happens.

Semester on Contemporary Art

One day, you're sitting in an up-and-coming artist's Brooklyn studio, discussing how nature inspires you. The next, you're at The Metropolitan Museum of Art, debating the political meaning of a Kandinsky work with a classmate. At Drew, this is how you learn about modern art. While the program is required for art and art history majors, it's open to everyone.

Semester on Wall Street

Goldman Sachs. New York Stock Exchange. Morgan Stanley. These organizations play a major role in shaping the world's economy, and Drew takes you to the center of the financial district. Find mentors, including Drew alumni, among the traders, regulators, fund managers and decision-makers that power the financial world. You never know, today's mentor may be tomorrow's boss.

Semester on Communications and Media

Broadcasting, advertising, publishing, film, public relations—New York City is the media and communications capital of the world. Drew takes you into the heart of it all to learn from professionals who shape our interconnected communications-based world.



“One of the big reasons I came to Drew University was because of the UN semester. Doing human rights and legal work as an undergraduate was really fulfilling. Now I know I want to go into international law.”

Kishan Patel
Political Science and Economics Double Major
Drew University '15
International Law student at Oxford University

We deliver full-impact learning.



62%

of Drew students take advantage of international and off-campus programs



How You Learn

Drew can help you find—and nurture—your true calling. You'll have the support of your professors and opportunities to relate your studies to real-world situations.

Student-Driven Learning

Think of it this way: You drive—and we help you navigate—your intellectual adventure at Drew. Your studies connect you with the questions, ideas and passions you want to explore; your professors are there to guide your journey.

Supportively Rigorous

Yes, you will work hard. Yes, you will have support. A Drew education challenges you to push your academic limits while encouraging you to achieve your personal best.

Action Centered

Less time sitting in class means more time learning the lessons: hands-on research in the lab, practicing investment strategies with real funds, working with disadvantaged children in neighboring cities, testing theories with on-the-job applications.

Learning from Experience

Drew is located in the midst of one of the largest concentrations of Fortune 500 corporate headquarters and biomedical research laboratories in the country. Because of our location, you will have access to unmatched opportunities for academic internships where you can turn classroom theory into practice and get hands-on experience in your chosen field.

Short-term International Programs

Drew offers a variety of exciting international programs designed to fit many academic interests and individual schedules. drew.edu/globaled/programs

Research Institute for Scientists Emeriti*

Since 1980, the RISE program has allowed undergraduate students to engage in advanced research topics under the supervision of retired industrial scientists. This one-of-a-kind program received the prestigious Merck Innovation Award for Undergraduate Science Education "for fresh thinking and imaginative use of resources." drew.edu/rise

Drew Summer Science Institute*

Each summer, advanced science students work full-time, one-on-one with a faculty mentor for eight to ten weeks on real-world research. Some focus on topics they have developed themselves, others participate in their mentor's existing research project, ranging from brain disease to atmospheric chemistry. drew.edu/dssi

*These programs are available to Pathway students after enrolling as degree-seeking Drew students.

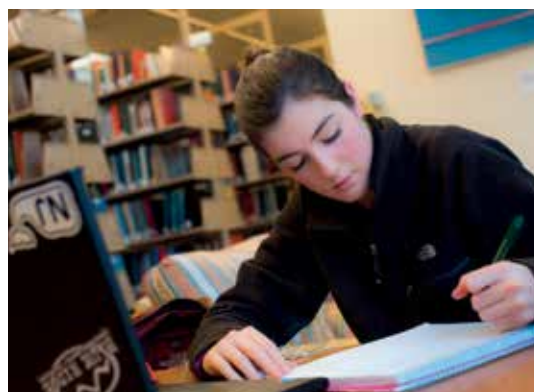


"It has been shown that students thrive when they are given mentors and early exposure to exciting, cutting-edge laboratory science. We seek to augment and expand what Drew already does well by offering stimulating research experiences to Drew's undergraduates."

Jon Kettenring, PhD
RISE Director
Drew University

Research with retired industrial scientists in one-of-a-kind RISE program

Hundreds of Fortune 500 companies in the surrounding area including Goldman Sachs, Merck and CBS



94%

of Drew's Class of 2014 were working or in graduate school within 6 months of graduation



One in three Fortune 500 CEOs earned degrees in liberal arts

What You Learn

Today's careers may be replaced by tomorrow's hottest jobs. That is why it's important to have intellectual skills that work in any situation. No matter what field you study at Drew, you will be prepared—not just for any job, but every job.

Seven Skills for Success

The liberal arts curriculum develops a range of skills that are considered essential in the workplace, especially for management positions:

1. Critical thinking and problem solving

Evaluate information and solve problems.

2. Creativity, design and innovation

See things in a new way, whether it's a sales pitch, a stage set or a supply chain inefficiency.

3. Collaboration and teamwork

Partnering with others creates synergy in today's team-based workplace.

4. Written, oral and visual communications

Target your message and your audience to make a convincing argument.

5. Cross-cultural communication

Step outside your comfort zone so you can bridge divides and connect lives.

6. Research, observation and experimentation

Delve into every mystery to find answers, gain greater understanding and reveal new questions.

7. Leadership, self-direction and self-awareness

Follow me! Being a successful leader requires the ability to inspire confidence in others.

Undergraduate Study

Undergraduate study in the US means earning a bachelor's degree. A bachelor's degree is typically a four- or five-year program. At Drew University you may earn a Bachelor of Arts. To receive a bachelor's degree, you must:

- Complete a minimum 128 credit hours total. With an average course load of 16 credits each term, you can complete a bachelor's degree in four years of full-time study.
- Complete a sequence of courses within a major field of study, called major requirements.
- Complete a sequence of courses outside your major field of study, called general education requirements.

Liberal Arts Education

The liberal arts provide a well-rounded education in a range of subjects and intellectual skills. You will take classes in science, the arts and humanities no matter your major, exposing you to new ideas and new ways of thinking. As a result, you develop critical thinking, communication and problem-solving skills that are applicable to any situation. A liberal arts education doesn't just prepare you for a job—it prepares you for life.

Choosing Your Major

Find your passion at Drew, whether you have decided on a field of study or not. Try out courses in everything from chemistry to ceramics, and select a major at the end of the second year of study. At Drew it is possible to complete more than one major or develop a special major, drawing on various fields of study.

In addition, you can pursue an academic minor, which has fewer requirements than a major. Minors allow you to study a second field for personal interest or to complement the major field of study.



For more information, visit:
drew.edu/undergraduate/what-you-learn



Drew Academic Programs

● The following Pathway programs can lead to one of the Drew undergraduate majors indicated below.

	Arts	Business	Humanities and Social Sciences	Sciences	Pre-Engineering
Majors drew.edu/undergraduate/what-you-learn					
Anthropology			●		
Art	●				
Art History	●		●		
Biochemistry & Molecular Biology				●	
Biology				●	
Business		●			
Chemistry				●	
Chinese Studies			●		
Classical Studies			●		
Computer Science				●	
Economics		●	●		
English			●		
Engineering [A dual degree program with Columbia University, visit drew.edu/engineering for more details]					●
Environmental Studies & Sustainability				●	
French			●		
German Studies			●		
History			●		
International Relations			●		
Mathematics				●	●
Music	●				
Neuroscience				●	
Pan-African Studies			●		
Philosophy			●		
Physics				●	●
Political Science			●		
Psychology			●		
Religion, Comparative			●		
Sociology			●		
Spanish			●		
Theatre Arts	●				
Women's & Gender Studies			●		

All of the above majors are available as minors.

Minors

The following minors can be added to any of the undergraduate majors listed to the left.

- American Studies
- Archaeology
- Arts Administration & Museology
- Dance
- European Studies
- Film, Media and Communication Studies
- Holocaust Studies
- Humanities
- Italian
- Jewish Studies
- Latin American Studies
- Leadership for Social Action
- Linguistic Studies
- Medieval Studies
- Middle East Studies
- Photography
- Public Health
- Russian
- Western Heritage
- World Literature
- Writing

Joint-Degree Programs

- Education
- Engineering
- Law
- Management
- Medicine*

Pre-Professional Programs

- Must be combined with a major*
- Pre-Medicine/Health
- Pre-Dental
- Pre-Nursing
- Pre-Occupational Therapy/Pre-Physical Therapy
- Pre-Pharmacy

*Requires US citizenship or permanent US residency



For a campus tour, visit:
intohigher.com/newyork/tour



Access to all university facilities,
including the athletic center, library and
on-campus events

INTO New York at Drew University

INTO New York at Drew University is your first step toward academic success in the US. Our innovative Pathway and English language programs, outstanding faculty and facilities and dedicated support services ease your transition to US life and prepare you for the demands of a rigorous liberal arts education.

INTO New York at Drew Pathway Program

Through the INTO New York at Drew 2-year Pathway program, you can take the fast track to a degree program of your choice. The program provides you with a solid foundation for not just any career path, but all career paths.

English Language Program

The Academic English program prepares you for university study by combining intensive language instruction with the development of academic study skills. Additionally, you'll have opportunities to speak with other domestic and international students outside the classroom to build confidence and increase fluency. Our Academic Coaching program offers additional academic and social support. Learn more about Academic English on page 35.

State-of-the-art Facilities

Our center's facilities include:

- Wireless internet throughout the center
- Multi-purpose classrooms
- Lounge areas for student-teacher meetings, study groups and relaxing
- Personalized support services 24 hours a day, including emergency assistance
- Small classes that allow for maximum student-teacher interaction
- Close proximity to all campus classrooms, residence halls, recreational facilities and restaurants/dining halls

Global Village Learning Community

Global Village provides an opportunity for international students to live with domestic and other international students in an integrated community. Global Village is designed to support students with a successful academic and social transition, provide a sense of community, increase academic performance, support progression to the chosen degree program and help integrate students to the university experience.

Students take one to two classes as a group and live near each other so they can study, work on group projects and attend tutoring sessions together. The Global Village Community is staffed by a dedicated student services coordinator who lives on-site in the first-year residence hall. Students receive academic support and get to study with others in their community and fields of interest.



"I invite you to experience American culture in a safe, supportive campus environment. We offer innovative Pathway programs that build the foundation of a liberal arts education and our supportive faculty and advisors are committed to your academic, professional and personal success."

Sharon Sundue, PhD
Center Director

INTO New York at Drew University

Innovative Pathway programs let you study English while taking Drew University academic courses


Personalized support services 24 hours a day



Zero

Classes taught by
graduate assistants

Undergraduate



Drew's liberal arts approach to education gives you the freedom to guide your own intellectual journey. Offering more than 50 fields of study across the arts and sciences, the flexibility to mix and match majors and minors, and opportunities to apply ideas in real-world situations, you'll acquire the critical skills to excel long after Commencement Day.

74%

of CEOs say a liberal arts education prepares graduates for 21st century success

Choose from wide range of majors in Business, Engineering, Sciences, Humanities and the Arts





Direct Entry

Drew provides direct entry to the university for international first-year and transfer students who meet the minimum English language proficiency and grade point average requirements. Admission decisions are made on a rolling basis.

1. Apply for Admission

- Ensure you meet all academic and language requirements for admission.
- Complete and submit the online application.
- Pay the non-refundable \$60 application fee.

Visit drew.edu/apply

2. Provide All Required Documents

- Results from English Proficiency Exam—TOEFL or IELTS. This may be waived on a case-by-case basis depending on SAT/ACT scores or previous study
- Evaluation of all school credentials, submitted in English

Academic and English Testing Score Codes for Drew

SAT: 2193	TOEFL: 2193
ACT: 2550	

3. Submit Immigration Documents

- A copy of your passport
- Application for Form I-20 and Affidavit(s) of Support
- Official Bank Account Statement in US dollars

Visit drew.edu/undergraduate/admissions/applying#international

4. Check Your Application Status

Upon receipt of your application, the Admissions Office will send you an email with directions on accessing your online password-protected student portal. Through this portal, you can check on the status of your application and identify any documents or credentials that may still be needed in order to complete your application.

5. Confirm Enrollment Details

Once the Admissions Committee makes a decision about your application, you will be notified through the student portal. If you are admitted, you will receive specific instructions on how to confirm your enrollment, indicate your housing interest, choose a food plan and register for Orientation.

6. Document Submission for Admitted Students

All application documentation (original transcripts and financial statements, etc) must be sent to:

Drew University

College of Liberal Arts
Office of Admissions
36 Madison Avenue
Madison, NJ 07940
USA

Phone: +1 973 408 3739

Fax: +1 973 408 3068

Email: admissions@drew.edu

Credit-by-Exam

Drew recognizes the achievement of AP, IB and A level scholars. Students may be eligible for advanced academic standing and scholarships, and can receive transfer credits from the exams, courses or subjects taken.

Third-party Authorization

For students applying through an education or high school counselor, please make sure to submit the 3rd party release form with your supporting documents.

Key Program Facts

Start Dates

- **Fall:** August 29, 2016
- **Spring:** January 16, 2017

Application Deadlines*

- **Fall:** February 16, 2016
- **Spring:** December 1, 2016

*Applications are accepted after the deadline on space availability basis

Academic Entry Requirement

- Secondary/high school diploma
- In-country equivalent of 3.0 high school GPA on a 4.0 scale

English Language Entry Requirements

- TOEFL iBT 80 (18 minimum subscores)
- IELTS 6.5 (6.0 minimum subscores)
- Completion of Academic English Level 6 with no grades below C

Transfer Requirements

Academic Entry Requirements:

- Up to 80 transferable credits, with grades of C- or better on a 4.0 GPA scale with a minimum 2.5 GPA required for consideration for admission.
- Transferable course work MUST be comparable to courses offered at Drew University.
- Credit is not granted for basic skills or remedial course work

Admissions decisions are holistic, considering both college GPA, and for students with less than 24 credits, may also consider high school grades.

English Language Requirements:

- TOEFL iBT 80 (18 minimum subscores)
- IELTS 6.5 (6.0 minimum subscores)

Housing Requirements

- All undergraduate students are expected to live in university housing.

drew.edu/undergraduate/admissions/applying

Undergraduate Pathway Programs

The INTO New York at Drew Undergraduate Pathway programs give you the opportunity to begin earning credits toward your undergraduate degree while building the English and academic skills needed for success.

Understand the Pathway Program

INTO New York at Drew's Undergraduate Pathway program combines intensive language study, academic skills development and credit-bearing course work in a program designed to move students successfully through the first two years of their four-year degree program in the US.

After successfully completing the two-year Pathway program and meeting all entry requirements, students may progress to Drew or a number of well-known universities. Pathway programs begin in both the fall and spring semesters. Some programs may require taking additional courses in the summer term in order to complete the degree in four years.

Decide if the Program is Right for You

The Pathway program is for students who:

- Want to study for an undergraduate degree in the US
- Desire additional academic, language and cultural support in order to succeed during their first two years at a US university
- May need to improve English language skills
- May have lower GPAs than required of direct-entry students

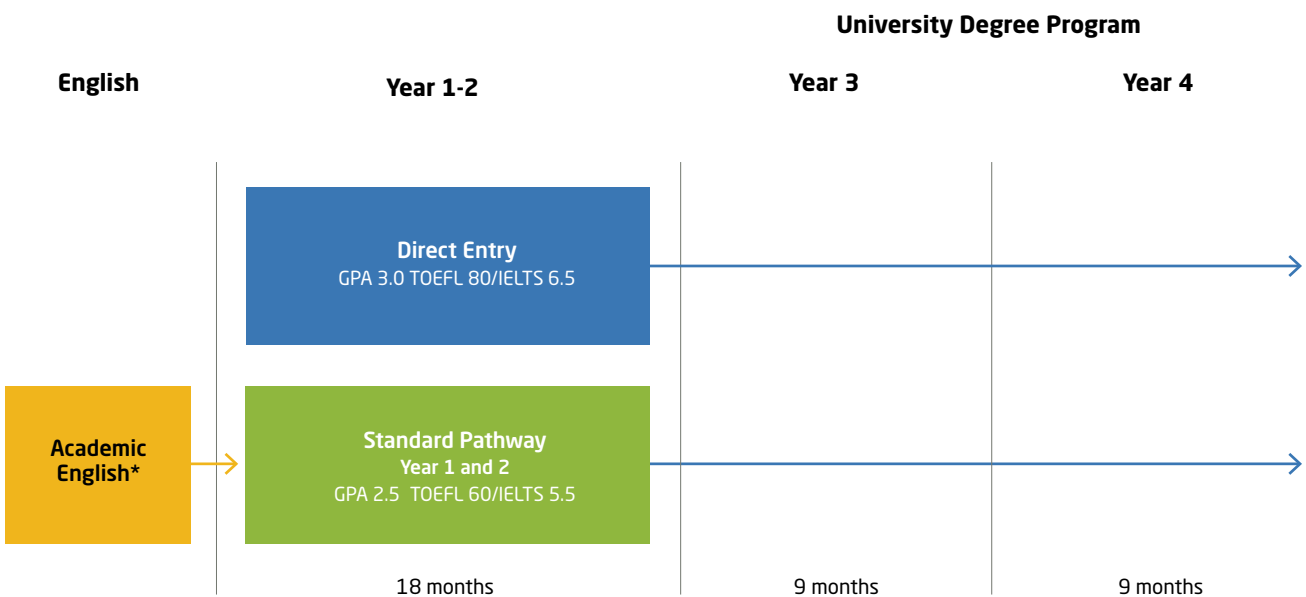
Fully Integrated University Experience

In addition to intensive English instruction, Pathway students take core academic courses including math, science, writing and other courses required of all students, domestic and international.

Prepare for Success

At the end of the 2-Year Pathway program students should be able to:

- Acquire the broad foundation of a liberal arts education.
- Communicate effectively in written and spoken English.
- Interact fully with professors and fellow students in a US classroom setting.
- Understand research, reference and citation standards for American academic papers.
- Read, comprehend and critically evaluate academic texts and problems.
- Take useful and accurate notes in academic lectures.
- Use on-campus technology, including computer hardware and software.



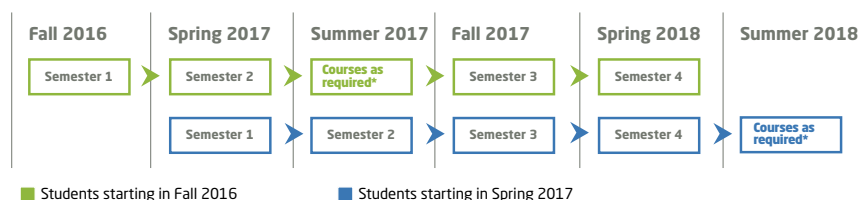
*The length of your Academic English program before Pathway depends on your level of English.

Program Benefits

Pathway students receive the highest level of support during their transition, making the program an ideal choice for international students who are driven to achieve high academic goals. Other benefits include:

- Upon successful completion of a Pathway program, students are guaranteed progression to a Drew undergraduate program or may choose to continue their degree studies at a number of well-known US universities.
- A curriculum consisting of Drew credit-earning courses
- Full integration with domestic and international students
- Access to all Drew cultural events, athletic events and activities
- Classrooms and residential accommodations in the heart of campus
- Highest level of support for student success
- Individual tutoring for any subject
- Highly trained and experienced university instructors
- Academic advising throughout the program
- Academic coaching by professional staff to aid transition to American university life and expectations

Typical Study Plan for the 2-Year Pathway Program



*For Science and Pre-Engineering Pathway programs

Key Program Facts

Pathway Programs

- Arts
- Business
- Humanities and Social Sciences
- Sciences
- Pre-Engineering

Start Dates

- Fall: August 21, 2016
- Spring: January 11, 2017

Program Duration

- 2-Year Pathway programs are four semesters.

Academic Entry Requirement

- Satisfactory completion of a high school diploma with an in-country equivalent of 2.5 minimum GPA.

English Language Requirements

- TOEFL 60 (11 minimum subscores) **or** IELTS 5.5 (5.0 minimum subscores) **or** PTEA 44+ or Password overall Level 6 **or** completion of Academic English Level 4 with no grades below C.

Housing Requirements

- All Pathway students are required to live in university housing for the duration of the program.

Program Notes

- All Pathway students are required to take an English language placement test upon arrival to determine EAP placement. Students with higher levels of English proficiency can substitute EAP courses for additional university electives.

intohigher.com/newyork/programs

Arts		Degree Program Components		Program Information																																																																																						
Standard Pathway - 4 Semesters Fall: August 21, 2016 Spring: January 11, 2017		128 credit hour program 64 credit hours apply from Pathway 64 credit hours remaining toward degree																																																																																								
Entry Requirements Academic Requirements <ul style="list-style-type: none"> • In-country equivalent of 2.5 high school GPA on a 4.0 scale Language Requirements <ul style="list-style-type: none"> • TOEFL iBT 60 (11 minimum subscores) • IELTS 5.5 (5.0 minimum subscores) • PTEA 44+ • INTO Password: 6.0 overall • Completion of Academic English Level 4 with no grade below C 		<table border="1"> <thead> <tr> <th>Semester 1</th> <th>Course Title</th> <th>Credit Hours</th> </tr> </thead> <tbody> <tr> <td>EAP 101*</td> <td>English for Academic Purposes I (Reading/Writing)</td> <td>4</td> </tr> <tr> <td>EAP 102*</td> <td>English for Academic Purposes I (Listening/Speaking)</td> <td>4</td> </tr> <tr> <td>AMST 101</td> <td>American Popular Culture</td> <td>4</td> </tr> <tr> <td>MUSIC 101</td> <td>Music: Imagination and Technique (with ESL support) OR</td> <td>4</td> </tr> <tr> <td>ART 104</td> <td>2-D Design (with ESL support) OR</td> <td>4</td> </tr> <tr> <td>ANTH 104</td> <td>Cultural Diversity (with ESL support)</td> <td>4</td> </tr> <tr> <td colspan="2" style="text-align: right;">Total</td> <td>16</td> </tr> <tr> <th>Semester 2</th> <th>Course Title</th> <th>Credit Hours</th> </tr> <tr> <td>EAP 201*</td> <td>English for Academic Purposes II (Listening/Speaking)</td> <td>4</td> </tr> <tr> <td>EAP 202*</td> <td>Public Speaking</td> <td>4</td> </tr> <tr> <td>MUSIC 102</td> <td>Music Fundamentals (with ESL support) OR</td> <td>4</td> </tr> <tr> <td>ART 106</td> <td>Drawing I (with ESL support) OR</td> <td>4</td> </tr> <tr> <td>THEA 120</td> <td>Theater Technology (with ESL support) AND</td> <td>4</td> </tr> <tr> <td>SOC 101</td> <td>Introduction to Sociology (with ESL support) OR</td> <td>4</td> </tr> <tr> <td>REL 101</td> <td>Comparative Global Religion (with ESL support)</td> <td>4</td> </tr> <tr> <td colspan="2" style="text-align: right;">Total</td> <td>16</td> </tr> <tr> <th>Semester 3</th> <th>Course Title</th> <th>Credit Hours</th> </tr> <tr> <td>WRTG 101</td> <td>College Writing for ESOL</td> <td>4</td> </tr> <tr> <td>ART, MUSIC or THEA</td> <td>College Elective</td> <td>4</td> </tr> <tr> <td>ART, MUSIC or THEA</td> <td>College Elective</td> <td>4</td> </tr> <tr> <td>Humanities</td> <td>College Elective</td> <td>4</td> </tr> <tr> <td colspan="2" style="text-align: right;">Total</td> <td>16</td> </tr> <tr> <th>Semester 4</th> <th>Course Title</th> <th>Credit Hours</th> </tr> <tr> <td>ART, MUSIC or THEA</td> <td>College Elective</td> <td>4</td> </tr> <tr> <td>ART, MUSIC or THEA</td> <td>College Elective</td> <td>4</td> </tr> <tr> <td>Humanities</td> <td>College Elective</td> <td>4</td> </tr> <tr> <td>Sciences</td> <td>College Elective</td> <td>4</td> </tr> <tr> <td colspan="2" style="text-align: right;">Total</td> <td>16</td> </tr> </tbody> </table>	Semester 1	Course Title	Credit Hours	EAP 101*	English for Academic Purposes I (Reading/Writing)	4	EAP 102*	English for Academic Purposes I (Listening/Speaking)	4	AMST 101	American Popular Culture	4	MUSIC 101	Music: Imagination and Technique (with ESL support) OR	4	ART 104	2-D Design (with ESL support) OR	4	ANTH 104	Cultural Diversity (with ESL support)	4	Total		16	Semester 2	Course Title	Credit Hours	EAP 201*	English for Academic Purposes II (Listening/Speaking)	4	EAP 202*	Public Speaking	4	MUSIC 102	Music Fundamentals (with ESL support) OR	4	ART 106	Drawing I (with ESL support) OR	4	THEA 120	Theater Technology (with ESL support) AND	4	SOC 101	Introduction to Sociology (with ESL support) OR	4	REL 101	Comparative Global Religion (with ESL support)	4	Total		16	Semester 3	Course Title	Credit Hours	WRTG 101	College Writing for ESOL	4	ART, MUSIC or THEA	College Elective	4	ART, MUSIC or THEA	College Elective	4	Humanities	College Elective	4	Total		16	Semester 4	Course Title	Credit Hours	ART, MUSIC or THEA	College Elective	4	ART, MUSIC or THEA	College Elective	4	Humanities	College Elective	4	Sciences	College Elective	4	Total		16	Progression Requirements <ul style="list-style-type: none"> • Minimum 2.5 GPA in the Pathway program • No grade below C • Completion of all ESL support tutorials * Progression requirements to other universities may vary. Notes Students must maintain 2.0 GPA per semester to remain in good academic standing. Semester 3 will always commence in the fall. During the second year of the pathway, students will select a well-rounded set of courses with the help of their academic advisor. No audition or portfolio required for Art, Art History, Music or Theatre majors. These courses are generally delivered by INTO New York at Drew and are for Pathway students only.
Semester 1	Course Title	Credit Hours																																																																																								
EAP 101*	English for Academic Purposes I (Reading/Writing)	4																																																																																								
EAP 102*	English for Academic Purposes I (Listening/Speaking)	4																																																																																								
AMST 101	American Popular Culture	4																																																																																								
MUSIC 101	Music: Imagination and Technique (with ESL support) OR	4																																																																																								
ART 104	2-D Design (with ESL support) OR	4																																																																																								
ANTH 104	Cultural Diversity (with ESL support)	4																																																																																								
Total		16																																																																																								
Semester 2	Course Title	Credit Hours																																																																																								
EAP 201*	English for Academic Purposes II (Listening/Speaking)	4																																																																																								
EAP 202*	Public Speaking	4																																																																																								
MUSIC 102	Music Fundamentals (with ESL support) OR	4																																																																																								
ART 106	Drawing I (with ESL support) OR	4																																																																																								
THEA 120	Theater Technology (with ESL support) AND	4																																																																																								
SOC 101	Introduction to Sociology (with ESL support) OR	4																																																																																								
REL 101	Comparative Global Religion (with ESL support)	4																																																																																								
Total		16																																																																																								
Semester 3	Course Title	Credit Hours																																																																																								
WRTG 101	College Writing for ESOL	4																																																																																								
ART, MUSIC or THEA	College Elective	4																																																																																								
ART, MUSIC or THEA	College Elective	4																																																																																								
Humanities	College Elective	4																																																																																								
Total		16																																																																																								
Semester 4	Course Title	Credit Hours																																																																																								
ART, MUSIC or THEA	College Elective	4																																																																																								
ART, MUSIC or THEA	College Elective	4																																																																																								
Humanities	College Elective	4																																																																																								
Sciences	College Elective	4																																																																																								
Total		16																																																																																								

Undergraduate Pathway Programs

Business			
Standard Pathway - 4 Semesters	Degree Program Components		Program Information
Fall: August 21, 2016 Spring: January 11, 2017	128 credit hour program 64 credit hours apply from Pathway 64 credit hours remaining toward degree		
Entry Requirements	Semester 1	Course Title	Credit Hours
Academic Requirements	EAP 101*	English for Academic Purposes I	8
• In-country equivalent of 2.5 high school GPA on a 4.0 scale	AMST 101	American Popular Culture	4
Language Requirements	ECON 101	Microeconomics (with ESL support)	4
• TOEFL iBT 60 (11 minimum subscores)	Total		16
• IELTS 5.5 (5.0 minimum subscores)	Semester 2	Course Title	Credit Hours
• PTEA 44+	EAP 201*	English for Academic Purposes II	4
• INTO Password: 6.0 overall	SPCH 101	Public Speaking	4
• Completion of Academic English Level 4 with no grade below C	ECON 102	Macroeconomics (with ESL support)	4
	SOC 101	Introduction to Sociology (with ESL support) OR	4
	ANTH 104	Cultural Diversity (with ESL support)	4
	Total		16
	Semester 3	Course Title	Credit Hours
	WRTG 101	College Writing for ESOL	4
	MATH 117	Statistics	4
	BST 115	Fundamentals of Financial Accounting	4
	Humanities	College Elective	4
	Total		16
	Semester 4	Course Title	Credit Hours
	ECON 301	Intermediate Microeconomics	4
	REL 214	Business Ethics OR	4
	SOC 217	The Sociology of Management	4
	Elective	College Elective	4
	Elective	College Elective	4
	Total		16
			Progression Requirements
			• Minimum 2.5 GPA in the Pathway program
			• No grade below C
			• Completion of all ESL support tutorials
			* Progression requirements to other universities may vary.
			Notes
			Students must maintain 2.0 GPA per semester to remain in good academic standing.
			Semester 3 will always commence in the fall.
			Dependent on the articulation agreement, students may be required to complete Calculus and Analytical Geometry 1 in the second year as one of the college electives.
			During the second year of the Pathway, students will select a well-rounded set of courses with the help of their academic advisor.
			These courses are generally delivered by INTO New York at Drew and are for Pathway students only.

Humanities and Social Sciences			
Standard Pathway - 4 Semesters	Degree Program Components		Program Information
Fall: August 21, 2016 Spring: January 11, 2017	128 credit hour program 64 credit hours apply from Pathway 64 credit hours remaining toward degree		
Entry Requirements	Semester 1	Course Title	Credit Hours
Academic Requirements	EAP 101*	English for Academic Purposes I	8
• In-country equivalent of 2.5 high school GPA on a 4.0 scale	AMST 101	American Popular Culture	4
Language Requirements	ANTH 104	Cultural Diversity (with ESL support)	4
• TOEFL iBT 60 (11 minimum subscores)	Total		16
• IELTS 5.5 (5.0 minimum subscores)	Semester 2	Course Title	Credit Hours
• PTEA 44+	EAP 201*	English for Academic Purposes II	4
• INTO Password: 6.0 overall	SPCH 101	Public Speaking	4
• Completion of Academic English Level 4 with no grade below C	REL 101	Comparative Global Religion (with ESL support)	4
	SOC 101	Introduction to Sociology (with ESL support)	4
	Total		16
	Semester 3	Course Title	Credit Hours
	WRTG 101	College Writing for ESOL	4
	Elective	College Elective	4
	Elective	College Elective	4
	Elective	College Elective	4
	Total		16
	Semester 4	Course Title	Credit Hours
	Elective	College Elective	4
	Elective	College Elective	4
	Elective	College Elective	4
	Elective	College Elective	4
	Total		16
			Progression Requirements
			• Minimum 2.5 GPA in the Pathway program
			• No grade below C
			• Completion of all ESL support tutorials
			* Progression requirements to other universities may vary.
			Notes
			Students must maintain 2.0 GPA per semester to remain in good academic standing.
			Semester 3 will always commence in the fall.
			During the second year of the Pathway, students will select a well-rounded set of courses with the help of their academic advisor.
			These courses are generally delivered by INTO New York at Drew and are for Pathway students only.

Sciences			
Standard Pathway - 4 Semesters	Degree Program Components		Program Information
Fall: August 21, 2016 Spring: January 11, 2017	128 credit hour program 64 credit hours apply from Pathway 64 credit hours remaining toward degree		
Entry Requirements	Semester 1	Course Title	Credit Hours
Academic Requirements	EAP 101*	English for Academic Purposes I	8
<ul style="list-style-type: none"> In-country equivalent of 2.5 high school GPA on a 4.0 scale 	AMST 101	American Popular Culture	4
Language Requirements	MATH	Mathematics course, by placement OR	4
<ul style="list-style-type: none"> TOEFL iBT 60 (11 minimum subscores) IELTS 5.5 (5.0 minimum subscores) PTEA 44+ INTO Password: 6.0 overall Completion of Academic English Level 4 with no grade below C 	CHEM 150	Principles of Chemistry (with ESL support), by placement	4
	Total		16
	Semester 2	Course Title	Credit Hours
	EAP 201*	English for Academic Purposes II	4
	SPCH 101	Public Speaking	4
	Math	Mathematics course, by placement OR	4
	CHEM 150	Principles of Chemistry OR	4
	CHEM 160	Principles of Chemistry II OR	4
	BIO 160	Diversity of Life OR	4
	CSCI 117	Introduction to Computers and Computing AND	4
	ANTH 104	Cultural Diversity (with ESL support) OR	4
	SOC 101	Introduction to Sociology (with ESL support)	4
	Total		16
	Summer Term (As Needed)	Course Title	Credit Hours
	MATH 150	Calculus and Analytical Geometry I OR	4
	CHEM 160	Principles of Chemistry II OR	4
	BIO 150	Ecology and Evolution	4
	Total		16
	Semester 3	Course Title	Credit Hours
	WRTG 101	College Writing for ESOL	4
	Science	College Elective	4
	Science	College Elective	4
	Humanities/Social Sciences	College Elective	4
	Total		16
	Semester 4	Course Title	Credit Hours
	Science	College Elective	4
	Science	College Elective	4
	Humanities/Social Sciences	College Elective	4
	Humanities/Social Sciences	College Elective	4
	Total		16

Progression Requirements

- Minimum 2.5 GPA in the Pathway program
- No grade below C
- Completion of all ESL support tutorials

* Progression requirements to other universities may vary.

Notes

Students must maintain 2.0 GPA per semester to remain in good academic standing.

Semester 3 will always commence in the fall.

Dependent on science major and math/chemistry placement test on arrival, students may be required to attend the summer semester between years 1 and 2 (for fall start) or end of year 2 (for spring start).

During the second year of the Pathway, students will select a well-rounded set of courses with the help of their academic advisor.

These courses are generally delivered by INTO New York at Drew and are for Pathway students only.

Pre-Engineering			
Standard Pathway - 4 Semesters	Degree Program Components		Program Information
Fall: August 21, 2016 Spring: January 11, 2017	128 credit hour program 64 credit hours apply from Pathway 64 credit hours remaining toward degree		
Entry Requirements	Semester 1	Course Title	Credit Hours
Academic Requirements	EAP 101*	English for Academic Purposes I	8
<ul style="list-style-type: none"> In-country equivalent of 2.5 high school GPA on a 4.0 scale 	AMST 101	American Popular Culture	4
Language Requirements	MATH	Mathematics course, by placement	4
<ul style="list-style-type: none"> TOEFL iBT 60 (11 minimum subscores) IELTS 5.5 (5.0 minimum subscores) PTEA 44+ INTO Password: 6.0 overall Completion of Academic English Level 4 with no grade below C 	Total		16
	Semester 2	Course Title	Credit Hours
	EAP 201*	English for Academic Purposes II	4
	SPCH 101	Public Speaking	4
	MATH	Mathematics course, by placement	4
	CHEM 150	Principles of Chemistry (with ESL support)	4
	Total		16
	Summer Term (As Needed)	Course Title	Credit Hours
	MATH 151	Calculus and Analytical Geometry II	4
	Total		16
	Semester 3	Course Title	Credit Hours
	WRTG 101	College Writing for ESOL	4
	MATH 250	Calculus and Analytical Geometry III	4
	PHYS 150	University Physics I	4
	CSCI 117	Introduction to Computers and Computing	4
	Total		16
	Semester 4	Course Title	Credit Hours
	MATH 313	Differential Equations	4
	PHYS 160	University Physics II	4
	Humanities/Social Sciences	College Elective	4
	Humanities/Social Sciences	College Elective	4
	Total		16

Progression Requirements Pending Articulation Agreements

Notes

For Columbia University-bound students: The five- or six-year Drew-Columbia dual degree engineering program offers students three or four years of liberal arts education at Drew and two years at Columbia, earning a BA from Drew, plus a BS in engineering from Columbia.

For more information about the Columbia dual degree program visit drew.edu/engineering

Students must maintain 2.0 GPA per semester to remain in good academic standing.

Semester 3 will always commence in the fall.

Dependent on engineering major and math/chemistry placement test on arrival, students may be required to attend the summer semester between years 1 and 2 (for fall start) or end of year 2 (for spring start).

During the second year of the Pathway, students will select a well-rounded set of courses with the help of their academic advisor.

These courses are generally delivered by INTO New York at Drew and are for Pathway students only.

After Your Pathway Program

The INTO New York at Drew Undergraduate Pathway programs open the door to degree success at Drew or at any of our prestigious partner universities. No matter where you decide to progress, you'll be on track to earning your undergraduate degree in as little as four years—the same as American students.

Your Degree, Your Way

After successfully completing the INTO New York at Drew University 2-year Pathway program and meeting the individual entry requirements, you can continue your studies at a choice of well-known universities, including Drew.

You will have access to a range of academic services to help you understand your options after the Pathway program. An advisor will explain academic prerequisites, and your study plans will be carefully monitored to ensure that all required courses are satisfactorily completed.





New York Institute of Technology

NYIT offers 90 undergraduate, graduate and professional degree programs in over 50 fields of study, including architecture and design; arts and sciences; engineering and computing sciences; and health professions. NYIT has 13,000 students attending campuses on Long Island and Manhattan, online and globally.

Find out more about NYIT at nyit.edu

#50 Regional Universities, North
(U.S. News & World Report 2015)

#45 Best Undergraduate Engineering Program¹
(U.S. News & World Report 2014)



Seton Hall University

Seton Hall is a major Catholic university with more than 90 undergraduate programs, over 15,000 internships and cutting-edge, grant-funded research. Students are prepared to be leaders in a global society and challenged by outstanding faculty, a technologically advanced setting and values-centered curricula.

Find out more about Seton Hall at shu.edu

#126 in the National University rankings
(U.S. News & World Report 2015)

#113 Best Undergraduate Business Program
(U.S. News & World Report 2015)



Marist College

With over 55 academic programs, Marist offers students the power of a global university with the personal touch of a liberal arts college. Students thrive in an innovative environment where classroom instruction is redefined through advanced technology and collaboration with some of the world's top organizations, from IBM to Goldman Sachs.

Find out more about Marist at marist.edu

#11 Regional Universities, North
(U.S. News & World Report 2015)

Top 290 business schools in the world
(Princeton Review 2015)



Rowan University

A leading public institution, Rowan University combines liberal education with professional preparation from the baccalaureate through the doctorate. Rowan provides a collaborative environment in which faculty, staff and students integrate teaching, research, scholarship, creative activity and community service.

Find out more about Rowan at rowan.edu

#3 Top Public School, Regional Universities, North
(U.S. News & World Report 2015)

#19 Regional Universities, North
(U.S. News & World Report 2015)



Fairleigh Dickinson University

The largest private university in New Jersey, FDU offers over 100 undergraduate and graduate degree programs in engineering, computer science, information technology, nursing, criminal justice, business and more. FDU has two locations outside of the US in England and Canada.

Find out more about FDU at fdu.edu

#79 Regional Universities, North
(U.S. News & World Report 2015)

#99 Best Undergraduate Engineering Program¹
(U.S. News & World Report 2014)

¹ At schools where doctorate not offered

Dual Degree Options

Drew University is proud to offer three exciting dual degree options for student enrolled in Pathway programs. An excellent choice for highly motivated, high-achieving students, these dual degree programs provide guaranteed admission assuming certain course and grade requirements have been met.



Columbia University



About Columbia University

Columbia University is one of the world's most important centers of research and at the same time a distinctive and distinguished learning environment for undergraduate and graduate students in many scholarly and professional fields. Columbia recognizes the importance of its location in New York City and seeks to link its research and teaching to the vast resources of a great metropolis.

Find out more about Columbia University at columbia.edu

Liberal Arts and Engineering Dual Degree

This program leads to an undergraduate liberal arts (BA) degree from Drew and an undergraduate engineering (BS) degree from Columbia. Participants commonly enter the engineering school after their junior or senior year at Drew and complete both degrees in five to six years. Program graduates are "liberally educated engineers" possessing strong communication and problem-solving skills, as well as a high quality technical education.

Find out more about the Drew-Columbia dual degree program at drew.edu/engineering

Key Program Facts

Academic Progression Requirements

- Students must be enrolled full-time at Drew University for at least two years.
- Minimum 3.30 GPA overall
- Grade B or better in pre-engineering science and math courses designated by Columbia University. Repeat courses will not be considered.
- Successful completion of specific prerequisite courses outlined in the curriculum guide
- Completion of all Drew requirements for a major and graduation

English Language Progression Requirements

- TOEFL iBT 100 **or**
- IELTS 7.0 **or**
- SAT 650 (Critical Reasoning or Writing Sections)

Other Progression Requirements

Recommendations from:

- Drew's dual degree liaison office, Math instructor and Science instructor

undergrad.admissions.columbia.edu/apply/combined-plan

Ranked #7 of universities worldwide and #4 in the US

(Academic Ranking of World Universities 2013)

#19 Best Undergraduate Engineering Program¹
(U.S. News & World Report 2014)

¹ At schools whose highest degree is doctorate

Seton Hall Law School



About Seton Hall Law

Seton Hall Law is an exciting place to launch a new career. The university is located just 20 minutes from Wall Street, the legal and financial capital of the world. SHLS has achieved national distinction in the areas of health and pharmaceutical law, intellectual property law, public interest and government service, and international and corporate practice.

Find out more about Seton Hall Law at law.shu.edu

Liberal Arts and Law Dual Degree

The Drew University/Seton Hall Law 3+3 program provides streamlined and guaranteed admission to SHLS for qualified students in their junior year at Drew. Students can enroll in our joint degree law program and earn their BA from Drew and law degree (JD) from SHLS in six years instead of the traditional seven that it takes to earn a BA and a JD.

Key Program Facts

Academic Progression Requirements

- Minimum 3.25 GPA cumulative at the end of freshman year at Drew
- Minimum 3.50 GPA cumulative at the end of each subsequent year at Drew
- Complete the entire undergraduate program at Drew University within 4 years
- 3+3 students must earn minimum C- in all courses of the first year of legal study to satisfy the undergraduate requirements for Drew University.

Social Standing Progression Requirement

- Students must maintain a "good social standing" while enrolled at Drew University

Other Progression Requirements

- 3+3 students must take the LSAT (Law School Admission Test) by October of the third year of the undergraduate degree program and score in the 77th percentile or higher.

admissions.shu.edu/

#68 Best Law School in the US

(U.S. News & World Report 2014)

#5 Health Law Program in the nation

(U.S. News & World Report 2014)

Wake Forest University



About Wake Forest University

One of the nation's most respected private schools, Wake Forest University is recognized for its outstanding academic reputation and challenging liberal arts curriculum. Located in Winston-Salem, North Carolina, the university's motto, Pro Humanitate (for humanity), embodies similar ideals instilled in Drew University students.

Find out more about Wake Forest University at wfu.edu

Liberal Arts and Master of Arts Dual Degree

This program leads to a master of arts in management from Wake Forest and a bachelor's degree from Drew. It is a 10-month graduate business degree designed for recent liberal arts, science and engineering majors. This program excludes business majors at Drew.

Key Program Facts

Academic Progression Requirements

- Minimum 3.3 cumulative GPA at the end of junior year at Drew
- Grade B or better in Mathematics 117 (introductory statistics) or equivalent statistics-based social science course or advanced quantitative methods course
- Submission of standardized test score (GRE or GMAT) Test scores will not affect admission, but may impact the amount of scholarship awarded above the guaranteed minima specified below

Other Progression Requirements

- A personal interview
- A written letter of recommendation from student or designee affirming student has no honor code violations during tenure at Drew University

Automatic Merit Scholarship Awards

- Scholarships are awarded to high-achieving students automatically.

admissions.wfu.edu/

#27 National Universities

(U.S. News & World Report 2015)

#45 Best Business School in the US

(U.S. News & World Report 2015)




Flexible start dates
throughout the year



Six levels of instruction from
beginner to advanced



English Language Program


A young woman with long dark hair and glasses is sitting on a dark blanket on a grassy lawn. She is wearing a dark blue t-shirt and is focused on writing in a notebook with a red pen. To her left, the arm and shoulder of another person in a light-colored shirt are visible. In the background, there are trees with green and some autumn-colored leaves under a clear blue sky. A building with large windows is partially visible behind the trees.

Enjoy New York City while improving your English and living the real American college experience in safe, charming Madison, New Jersey.



1:12

Average teacher-to-student ratio
for Academic English



Access to all university
facilities and all on-campus
events



▲ Study on a safe, picturesque and friendly campus.

▼ Explore new sights with friends from across the US and world.



Academic English

Program Description

The Academic English program at INTO New York at Drew University prepares international students for university study in the US. The academically rigorous program provides international students with high-quality English language instruction and the academic skills to succeed at Drew through development of:

- Listening
- Speaking
- Reading
- Writing
- Academic study skills

Program Highlights

- Intensive English to prepare for university study
- Academic advising and coaching throughout the program
- Small classes capped at 17 students
- Highly trained and experienced instructors
- Participation in the Conversation Partners Program

Program Outcomes

After finishing this intensive program, successful students will be able to:

- Interact comfortably in the US classroom with professors and fellow students
- Understand US values in an academic setting
- Present their spoken and written ideas accurately and effectively in English
- Write research papers with proper use of citations and references
- Use the internet and Drew Library databases to conduct academic research
- Read, understand and critically evaluate academic texts.
- Understand and use vocabulary common to academic disciplines.
- Take useful and accurate notes in academic lectures and presentations.
- Develop and deliver oral presentations.

Key Program Facts

Start Dates

- Fall: August 21, 2016
- Spring: January 11, 2017
- Summer: May 17, 2017

Program Duration

- Fall and Spring semesters are each 16 weeks in length; Summer is 13 weeks
- 3 terms per year
- Minimum enrollment of one term

Academic Entry Requirement

- High school diploma

English Language Entry Requirement

- None; students will be assessed and placed upon arrival

Age Requirement

- 17 years old and above

Program Structure

- 6 levels of instruction
- Average 20 hours per week for Fall and Spring; average 23 hours per week for Summer
- Course work covering the core skills of reading, writing, listening, speaking, vocabulary and grammar

Progression Requirements from Academic English

To Standard 2-Year Pathway

- Completion of Academic English Level 4 with no grades below C.

To Direct Undergraduate Admission

- Completion of Academic English Level 6 with no grades below C.

Housing Requirement

- All students will live in on-campus accommodation and be fully integrated into the residence life community.

intohigher.com/newyork/programs

90%

of Academic English classes have 17 or less students



For more information, visit:
intohigher.com/newyork/programs



73

Student-run clubs and organizations on campus

Student Life



At Drew, you will find a strong student community, supportive staff and faculty, and a stimulating environment that challenges you to explore new interests. From sports and student clubs to exciting campus events, there are countless ways to connect with new people and take full advantage of an American college experience near New York City.

21%

of students are student-athletes



Over 80% of students live on campus



▼ Student Services informs students of events, activities and volunteer opportunities.



▼ Learn in small classes from full-time professors, focused on you.



Drew University Student Services

By studying with INTO, you are a Drew University student from day one. Enjoy full access to state-of-the-art university facilities and Drew's comprehensive support services.

University Library

Drew has some 625,000 print volumes, 80,000 e-books, 66,000 online journals, 286 databases—all searchable online from a single search box. All new students are paired with a specific librarian to help them with questions and research—their own live, personal Google—in-person or via chat. The library is open until 2 am on week nights, and open 24/7 during exam period with home-baked cookies available at midnight in the lobby.

Academic Commons

Academic support services are all in one central location in the library, including the writing and tutoring center, student technology support and the INTO Learning Center. The Academic Commons provides students with a study environment that encourages collaboration. It also offers space for instruction in the research and technology skills that support student success in college.

Students have access to free-of-charge tutoring by trained Drew students. They assist students in developing writing skills or in understanding course content from a variety of academic subjects.

Technology

Wireless networking covers nearly all academic and public spaces, as well as outdoor locations and residence halls. Ethernet connections are available in residential, academic and social spaces throughout campus. Students can access Drew network resources while off campus through their own ISP and remote access technologies. Technology-enabled classrooms bring the internet, audio-visual material and academic software applications into the teaching and learning process.

Orientation

All new students participate in an orientation program prior to beginning classes. Orientation assists in the transition to academic and social life in the Drew community by familiarizing students with campus and fostering new friendships.

Academic Services

Academic Services helps students make the most of their education by providing a range of support services and ensuring proper course work planning. The Office of Disability Services empowers students who have disabilities and coordinates support services that enable equal access to an education and university life.

Health Services

The physicians, nurse practitioners and nurses provide comprehensive health care to Drew University students. Our board certified staff, combined with the on-site state and federal certified laboratory, ranks Drew in the top of the field among college health services. Health Services is open seven days a week during the regular semesters with limited clinical hours during the summer and January. Students covered by the Drew University Health Insurance receive routine office visits free of charge.

James A. McClintock Center for Counseling & Psychological Services

Drew offers a broad range of group programs and individual counseling free to all interested students. This program assists students in their personal, social and academic development, and the achievement of life goals.

Public Safety

Patrol officers and dispatchers provide 24-hour service to the Drew community, including crime prevention, fire safety, traffic regulation, enforcement of university regulations and state and local laws. Professionally trained officers routinely patrol the campus and are certified in advanced lifesaving techniques and emergency medical response.



▼ One-on-one appointments and walk-in hours available in the tutoring center.



▼ Conversation partners develop cross-cultural awareness by exchanging ideas, stories and traditions with someone from a different background.



INTO New York at Drew Student Services

In addition to university resources, INTO New York at Drew delivers a wide range of personalized services to ensure you are safe, supported and successful in your academic and personal goals.

Student Services

The INTO New York at Drew Student Services team offers support and a range of services promoting social, personal and academic well-being. They help students settle in to life on campus, provide social opportunities and a variety of resources tailored to the specific needs of international students. Anything from questions about doctor appointments or renewing a visa to finding a place to live, help is never hard to find.

Additionally, INTO New York at Drew Student Services keeps students informed about events, activities and volunteer opportunities on campus and in the Madison community. There are many chances to meet American and other international students and practice English during your stay.

Orientation Program

Orientation involves a variety of important events that prepare students to be successful at INTO New York at Drew, including information about maintaining your visa status, registering for Drew classes, health requirements and insurance coverage. All students must attend the International Student Orientation.

Other important activities during Orientation include setting up a Drew email account, getting a Drew ID card, learning about the Drew community and taking a tour of the campus. It's also a great time to make new international and American friends and attend the many social events planned on campus.

Visa and Immigration Support

Upon arrival, the INTO New York at Drew Student Services team will provide information, support and guidance on maintaining your immigration status while you are in the US. This may include questions about renewing a student visa, making sure your I-20 or DS-2019 is always current, bringing your dependents, employment, traveling and more. In addition, workshops are held throughout the year on topics such as employment, scholarships and travel.

Academic Coaching

Students will meet with a member of the INTO New York at Drew Student Services team during their first week of classes to set their academic goals for the semester. From time management and organization skills to test preparation techniques, academic coaches work with students on an ongoing basis to develop individualized methods for student success.

Pathway Tutors

Pathway students have access to tutoring services through the INTO New York at Drew Center and the Drew Office of Academic Services. Our Pathway Tutors are Drew University students who work with Pathway students in English skills as well as subjects like math, science, engineering and business.

Conversation Partners Program

There are many opportunities to practice and improve your spoken English. One-on-one and small group conversation partners are available for all types of students on a first-come, first-served basis.

Trips and Activities

While the main reason for coming to INTO New York at Drew is to study, social activities will help you adjust to life in the US and allow you to develop a network of friends to make your stay more enjoyable. Drew offers a wide variety of options for socializing, experiencing the arts and taking part in sports. INTO New York at Drew also organizes many trips and activities designed to help students make the most of their time in the exciting New York City area.

University Placement Services

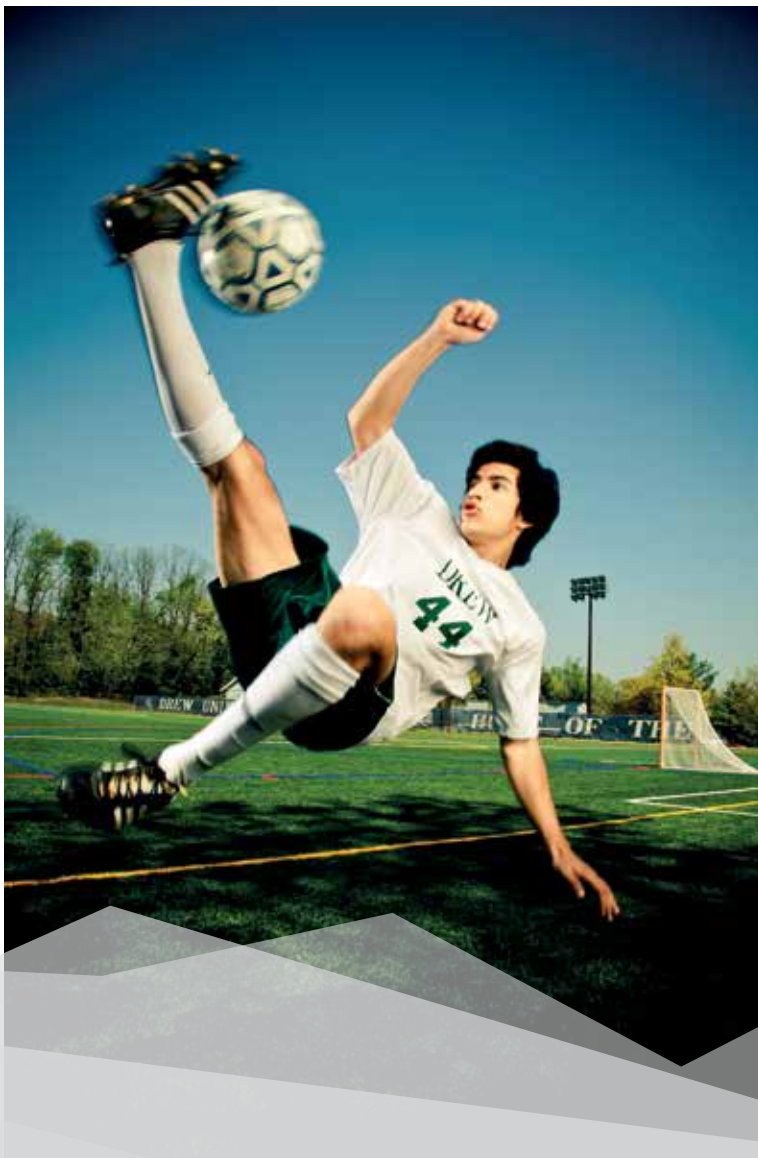
To ensure that you are fully supported as you take the next step toward studying for a US university degree, INTO New York at Drew University offers a range of free student placement services for students seeking to complete their degrees at partner institutions. Our academic advisors will provide you with practical advice on the study options available and assist with completing any required university application.

Other forms of help and support available include:

- One-on-one counseling to help you select the most appropriate course work to achieve your academic goals
- Practical advice and assistance with all stages of the university application process, including help with writing a personal statement



▲ Students learn the importance of teamwork, leadership and perseverance when they participate in varsity sports and student clubs.



▲ Drew is an NCAA Division III school, meaning academics are the primary focus for student-athletes.

Clubs and Sports

Your Drew experience is yours to define. There are endless opportunities to discover new interests and make new friends through student-run clubs, social activities and events on campus.

Student Clubs

At Drew, there is a campus organization for practically every interest, whether it's political, musical, athletic, social or volunteer-oriented. Get involved in student government, sing in one of three a cappella groups, try your hand at journalism on Drew's student newspaper, volunteer for community service or an environmental cause, or connect with fellow Anime fans. Not finding a club that's right for you? No problem—you can start one!

Club and Intramural Sports

Drew offers a variety of club and intramural sports including squash, volleyball, rugby and ultimate frisbee. Students learn the importance of teamwork, leadership and perseverance by participating in sports. Additionally, it's a great way to stay healthy and make new friends.

NCAA Division III Athletics

Drew is a NCAA Division III school, meaning that academics are the primary focus for our student-athletes. We see athletics as an extension of the educational experience and the achievements of our student-athletes demonstrate this belief. The men's and women's swimming and diving teams earned the College Swimming Coaches Association of America (CSCAA) Team Scholar All-America Award for 10 consecutive semesters.

Men's Teams

- Baseball
- Basketball
- Cross Country
- Fencing
- Lacrosse
- Soccer
- Swimming
- Tennis

Women's Teams

- Basketball
- Cross Country
- Equestrian
- Fencing
- Field Hockey
- Lacrosse
- Soccer
- Softball
- Swimming
- Tennis

Simon Forum and Athletic Center

The Forum field house contains a 200-meter indoor track and four indoor basketball/volleyball/tennis courts. The Athletic Center includes the NCAA regulation-size, eight lane, F.M. Kirby Pool, the NCAA-regulation Baldwin Gymnasium basketball court, racquetball and squash courts, a fitness room with weight training and cardiovascular conditioning machines, free-weight room and dance studios.

Beyond the Forum are eight lighted outdoor tennis courts—home to Drew's Landmark Conference champion men's tennis team, Doc Young Field with its baseball and softball diamonds, Ranger Stadium—a lighted polygrass field for soccer, lacrosse and field hockey, and the equestrian team's stable off campus.

2011 New Jersey Collegiate Press 1st place award for general excellence to *The Acorn*, Drew's student run newspaper

Drew's campus theatre is home to one of the leading professional Shakespeare theatre companies in the nation



▲ Each flag corresponds to a Drew student's home country.



Housing and Dining

Living on campus is one of the best ways to meet new people, adjust to US life and succeed in your studies. With support services and staff, recreational facilities and dining options just steps away, Drew's close-knit community makes the perfect home away from home.

Academic Success

Did you know that students living on campus achieve higher grade point averages than students who live off campus? At Drew, the average undergraduate GPA is 3.07 with 80% of students living on campus all four years.

Connections

Residence halls are a place to meet your best friend, or your 20 best friends. They are a place to meet like-minded people in one of our theme houses, such as Earth House or Women's Concerns. They are a place to participate in a living-learning community where you are right next door to other students taking the same class as you.

Diversity

Each residence hall is a diverse, multicultural community with students from different backgrounds, beliefs and orientations. No matter where you come from or where you are going, you will find someone to learn from and someone to share your culture with.

Guidance and Support

Resident Assistants are available 24 hours a day to help guide you, both socially and academically. The Resident Life staff is committed to providing a comfortable, safe and friendly environment for you to pursue your academic goals.

Residence Hall Features

- Convenient on-campus locations close to classrooms, libraries, athletic center and dining
- Live-in student staff to assist residents 24 hours per day
- Securely locked exterior doors
- Wireless high-speed internet
- Lounges with televisions and games such as billiards and table tennis
- Study lounges
- Laundry facilities

Items Provided in Each Room

- Bed with extra-long twin mattress
- Linen package including sheets, pillows, pillowcases and blankets
- Blinds or window coverings
- Desk and chair
- Closet or wardrobe space
- Television cable connection
- Ethernet port access
- Trash and recycling bins

Benefits of On-campus Dining

- No need to cook, wash dishes or shop for groceries
- All-you-care-to-eat meals, including make-your-own waffles and panini sandwiches, vegan and vegetarian options, a variety of American entrées, ethnically inspired foods and many other exciting, chef-created food choices
- No need to carry cash; meal plans are paid with student ID card
- Variety and flexibility: on-campus dining is available from 7:30 am-10 pm

The Commons

Drew was one of the first schools in the nation to join the Real Food commitment, which brings healthy, eco-friendly food to campus. During mild weather, you can enjoy meals on an outdoor deck which overlooks the scenic, forested center of campus.

The Ehinger Center Food Court

Grab a Starbucks coffee and settle in by one of the fireplaces. The new food court offers a variety of fast foods, including burgers, sandwiches, pizza and salads. If you are in a rush, you can opt for a variety of grab-and-go foods on your way from your room to class.

Java City at Brothers College

Located in the main academic building, Java City offers premium coffee and teas, sandwiches and snacks. This cozy coffee house provides a place to catch up on homework or with your friends between classes.

McLendon Hall C-Store

The C-Store, located in one of the residence halls in the Forest Preserve, is a convenience store featuring a large selection of snacks, beverages and health and beauty items.



"I interned at Barclays Capital and then at Credit Suisse, two of the top international banks in New York City. These internships prepared me for the future and might even open doors in the job market for me after graduation."

Aaron Ventosa, Mexico
Economics and Philosophy Double Major
Drew University

Work and Internships

Students who study with INTO New York at Drew not only excel in their education, but go on to establish successful careers.

Career Development Services

Among all of life's important decisions, choosing a career ranks among the most important. Finding work that allows you to express your passions, interests, skills and values is essential to real success.

The Center for Internships and Career Development at Drew University helps students navigate their way through the career decision-making process. From the first semester to the last, and beyond, students can get help with career counseling, résumé writing and interviewing skills. These services and programs are designed to assist you in choosing the right path and provide you with the skills and tools necessary to find your way.

Internships

The majority of Drew students participate in at least one academic internship, enabling them to put classroom theory into practice and get hands-on experience in their field. Drew students not only have access to a wide range of internship opportunities in New York City, but also at countless Fortune 500 corporate headquarters and biomedical companies located nearby in New Jersey.

Work Opportunities

International students on either F-1 or J-1 student visas are allowed to work on campus on a part-time basis (20 hours/week or less) during spring and fall, and full-time (40 hours/week) during summer, as long as they maintain their visa status.

For details, visit: drew.edu/career

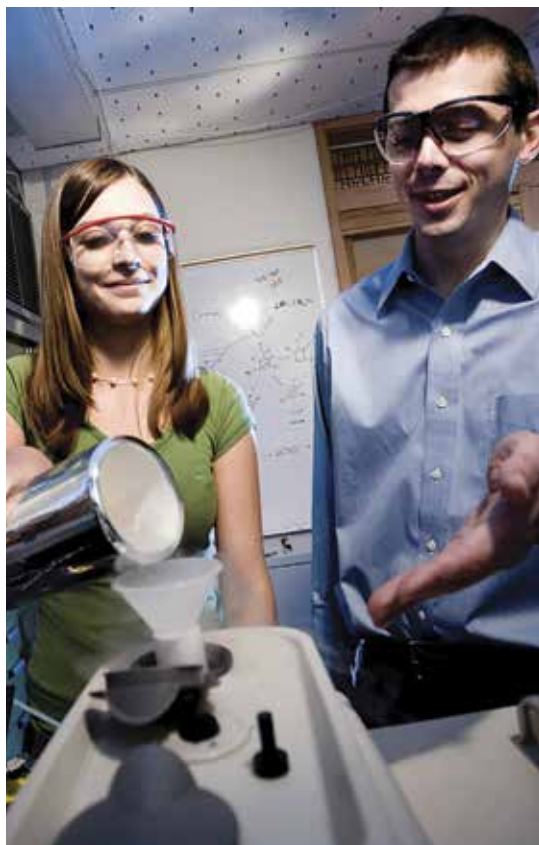
Working after Graduation

The services and programs offered through the Center for Internships and Career Development are designed to assist students in choosing their first professional path and provide them with the skills and tools necessary to find their way beyond the gates of Drew.

Depending on your visa, you may be eligible for Optional Practical Training or Academic Training. International students on F-1 visas are eligible to apply to US Immigration for one year of work authorization within their field of study. Students in STEM fields can apply for an additional 17-month extension of that work authorization with qualified employers. J-1 students may apply for a period of Academic Training related to their program of study to take advantage of employment opportunities after graduation.

The International Student and Scholar Services offers workshops and assistance to students who are applying for off-campus work authorization for internships and after graduation.





▼ Drew's non-governmental organization status offers you unparalleled access to the United Nations.



▼ Drew Investing Group gives students the opportunity to invest real money into the stock market and see real results.



Paths to the World

Technology and globalization is changing the face of business and employment. New jobs and industries are emerging every day. Drew's liberal arts education equips students with knowledge and skills, theory and practical experience. A Drew University education prepares you for any career—even those that do not yet exist.

Top-ranked Graduate Schools

Drew students have gone on to study at these top-ranked graduate schools:

- Brown University
- Columbia University
- Dartmouth Medical School
- Duke University
- Emerson College
- Emory University School of Law
- George Washington University
- Georgetown Law
- Harvard University
- Johns Hopkins University
- Michigan Institute of Technology (MIT)
- New York University
- The Ohio State University
- Oxford University
- Parsons The New School of Design
- Penn State University
- Princeton
- Rutgers University
- Sarah Lawrence College
- Tufts School of Dental Medicine
- University of Kent
- University of Southern California

Big-name Employers

Employers choose Drew graduates because of the skills they develop during their liberal arts studies. Students have gone on to work for the following companies:

- Americorps
- Apple
- Bank of America
- Barclays Capital
- BBC Worldwide
- Bond Street Theatre
- CNN
- Credit Suisse
- Dana-Farber Cancer Research Institute
- Goldman Sachs
- Harper's Bazaar
- JP Morgan Chase
- Lincoln Center
- MetLife
- Metropolitan Opera
- Michael Kors
- Morgan Stanley
- MTV Networks
- Peace Corps
- Prudential Financial
- Sony Music
- Teach for America
- Thompson Reuters
- Tommy Hilfiger
- Wells Fargo Advisors
- World Bank



“Drew graduates have the dual experience of a small classroom environment, where they cannot just blend into the crowd, and the opportunity to gain real-world experience with New York City internships. This combination makes Drew graduates an attractive hire for my or any other company.”

Ed Moed
Co-founder and CEO of Peppercomm
Drew University '89



Alumni and Parents

Drew's mission is to graduate students who are prepared to participate in and contribute to our world as informed and thoughtful citizens. Here are a few alumni who found their passion and voice at Drew, and went on to change the world.

Alumni

Awang Adek Hussin '77 **Malaysian Ambassador to the US**

Awang Adek Hussin graduated from Drew with a BA in mathematics and economics and then earned his MA and PhD in economics from the University of Pennsylvania. In March 2014, he was named ambassador to the US, where he focuses on building better economic and business ties between Malaysia and the US. His political career began more than a decade ago in his native province of Kelantan where he won a parliamentary seat election in 2004. After that, he held several positions including deputy rural and regional development minister, deputy finance minister and two terms as senator.

Robert Kopech '73 **VP and Chief Risk Officer, World Bank**

Robert Kopech graduated in Russian Studies from Drew and earned his MBA and MIA from Columbia University. Over the course of a 35-year career in the financial world, Robert focused on emerging markets around the globe. So he was well suited to accept a position, in June 2011, as the first chief risk officer at the World Bank, where he oversaw the multitude of risks associated with the bank's extensive worldwide investments.

Andrew Sedgwick '85 **General Manager, Apple**

Andrew Sedgwick came to Drew a self-confessed tough guy know-it-all. But at Drew, as a double major in economics and music, "they taught me how to convert that into business rationale." Sedgwick landed a job at Apple, where he spent a nearly 10-year assignment heading business in Korea, launching multiple product lines including the iPhone and iPad.

Vanessa Van Brunt '92 **Head of US Prime Broker and** **Alternative Sales, BlackRock**

Van Brunt has a unique background for the financial space, having served as a police officer and detective in New Jersey for 10 years prior to getting her undergraduate degree at Drew and MBA from Rutgers University. She currently sits on the Drew Alumni Association Board as participation committee co-chair. "The academic environment at Drew thrives when alumni actively participate and share their life and career experiences with students and faculty."

Kevin Murphy '89 **Television and Broadway Producer**

His parents wanted him to make a good living, but the theater was calling. So Kevin Murphy compromised, double-majoring in political science and theatre arts. His successful showbiz career—fueled by creative collaborations with Drew classmates—has allowed him to lead hit shows like "Desperate Housewives" and Syfy's "Caprica" and a recent Broadway musical adaptation of "Heathers." Behind the scenes, Kevin's projects require crafting arguments, motivating teams and managing resources—skills honed in both the classroom and the theater.

Sanjay Mirchandani '86 **Chief Operating Officer Global Centers** **of Excellence, EMC Corporation**

When Sanjay Mirchandani came to the US from his home in India to attend Drew University, it was his first overseas experience. "I immediately felt like I belonged," he says.

Mirchandani studied math and computer science at Drew and started his career developing new technology. "The best opportunities in life are not always defined," says Mirchandani. "Go with it and see where it takes you."

Christopher Smith '91 **Global Head of Operations and Senior VP,** **MetLife**

Christopher Smith received his BA in economics from Drew University before getting his MBA at Rutgers University. Smith leads more than 11,500 associates and responsible for the transformation of MetLife's operations into a global organization to create a differentiated customer experience, simplify how they operate and leverage our scale. Smith continues to be involved with Drew sitting on the Board of Trustees for the University.

Parents

Sending your son or daughter to college—especially in another country—is a big step. Thankfully, Drew University is a safe and supportive campus that encourages young adults to learn and grow. Drew is a small, close-knit community where students and faculty know one another by name. The campus is surrounded by a quiet, residential neighborhood. Our professionally trained Public Safety Officers provide 24-hour service, including emergency response.

Drew offers an orientation day to familiarize parents and family members with the campus community. It also helps parents and families better understand their role as part of a student's college experience and offers suggestions on how to assist their student in his or her transition. Typically parent and family sessions explore a variety of topics including campus services, academics, disability services, college life and more.

To schedule a tour, visit: drew.edu/undergraduate/admissions/visits-events

For more information, visit: drew.edu/parents



Apply via the forms in this brochure



Apply online at:
intohigher.com/newyork/apply



7-10 day
turnaround
for completed
applications

Your Application



Successful applicants receive an offer letter



I-20s are sent within 3 days of confirming enrollment



Study at INTO New York at Drew University

INTO New York at Drew Application Process

1. Determine Course of Study

Decide what academic or English language program you want to apply for. Read about INTO New York at Drew University's Pathway and English language programs at intohigher.com/newyork/programs

2. Check Requirements

Be sure your academic and language scores meet admission requirements for your program of choice. Detailed admission requirements can be found at intohigher.com/newyork/programs

3. Apply

To apply, visit intohigher.com/newyork/apply

Submit your application and required documents to INTOadmissions@drew.edu

4. Send Required Documents

The following documents will be needed to complete the application process.

- Transcripts (copies in native and English language)
- Diplomas (copies in native and English language)
- Language proficiency scores, if applicable
- Test scores, if applicable
- Copy of passport
- Evidence of funding

5. Application Processing

As soon as your application is received, we will notify you by email that it has been received and you may be asked to provide any missing application documents. Your transcripts and other documents must be evaluated, and you will be contacted once an admission decision is made.

6. Offer of Admission

If qualified, we will send you an offer of admission via email.

7. Confirm

Return your signed acceptance form and pay the required deposit. Once your signed acceptance form and deposit have been received we will send you your I-20 to the shipping address provided.

8. Prepare for Arrival

You will receive a Pre-Departure Guide to help prepare you for living and studying in the United States.

Application Checklist for Pathway Programs

Please read carefully and make sure you have included the following documents in your application package:

1. Application form, completed in full (including signature) and checked for accuracy	<input type="checkbox"/>
2. Copy of passport for student (and spouse/dependents, if applicable)	<input type="checkbox"/>
3. Copy of bank statement and Affidavit of Support or letter of sponsorship	<input type="checkbox"/>
4. Copies of high school or university diploma and transcripts (English and native language)	<input type="checkbox"/>
5. Copies of transcripts of all relevant qualifications translated into English as well as in native language	<input type="checkbox"/>
6. Copies of TOEFL/IELTS/PTEA/Password	<input type="checkbox"/>
7. Proof of an adequate alternative insurance policy, if appropriate	<input type="checkbox"/>
8. Copies of visa, I-20 and current DSO information (transfer students)	<input type="checkbox"/>

Application Checklist for English Programs

Please read carefully and make sure you have included the following documents in your application package:

1. Application form, completed in full (including signature) and checked for accuracy	<input type="checkbox"/>
2. Copy of passport for student (and spouse/dependents, if applicable)	<input type="checkbox"/>
3. Copy of bank statement and Affidavit of Support or letter of sponsorship	<input type="checkbox"/>
4. Proof of high school/secondary school graduation (Academic English only)	<input type="checkbox"/>
5. Proof of an adequate alternative insurance policy, if appropriate	<input type="checkbox"/>
6. Copies of visa, I-20 and current DSO information (transfer students)	<input type="checkbox"/>

INTO New York at Drew Application Form 1 of 2

Please print legibly and complete all relevant sections of this form in black ink. Submit your application (including signature) and required documents to: INTOadmissions@drew.edu

If an education counselor is assisting you with your application, fill out the details below. If not, leave this section blank and go to Section 1.

Company/Organization: _____ URN Number: _____

Section 1

A. Student Details

Please enter all names exactly as they appear on your passport.

Last/Family Name _____

First/Given Name _____

Middle Name _____

Gender M F

Date of Birth ____/____/____ mm/dd/yyyy

B. Visa and Immigration Information

Country of Birth _____

Country of Nationality/Citizenship _____

US Residency Status (including dual citizenship)
 Non-US Citizen or Non-resident Permanent Resident US Citizen

Are you currently living or studying in the United States? Yes No

If YES, please include a copy of your visa, I-20 and contact information of your DSO.

Will any of your dependents (spouse/children) come to the US with you?
 Yes No How many? _____

If yes, please include copies of their passports with your application.

C. Student Permanent Home Country Address

This is the student permanent home country address, it is required for creating the I-20. This address CANNOT be the address of the Education Counselor.

Street _____

City _____ State/Province _____

Country _____ Postal Code _____

Telephone _____

Student Email _____

D. Shipping Address

This is where the I-20 will be mailed.

Education Counselor/Contact Name _____

Street _____

City _____ State/Province _____

Country _____ Postal Code _____

Telephone _____

Contact Email _____

Section 2

English Language Program

Please select your intended program of study and a start date. Do not select programs with conflicting dates.

Academic English (select all that apply)
 August 2016 January 2017 May 2017

Study Abroad with English (select all that apply)
 August 2016 January 2017

Section 3

Academic Programs

Select one Undergraduate Pathway program and one start date and write your intended major below.

Fall: August 2016 Spring: January 2017

Please select your intended program of study:
 Arts Business Humanities and Social Sciences
 Sciences Pre-Engineering

Planned Academic Subject/Major: _____

You may find a complete list of the Drew University majors on page 17 of this brochure and online at intohigher.com/newyork/brochure. If you are unsure of your intended major, please write "undecided".

Section 4

Student Education History

Please list ALL secondary and post-secondary schools, colleges or universities you have attended or will attend prior to entering the university, including current studies. You must provide a transcript from each post-secondary school, college or university you have attended, even if you did not complete a term.

A. Secondary Schools/High Schools

Most recent secondary school attended:

School Name _____

Country _____

Start ____/____/____ mm/yyyy End ____/____/____ mm/yyyy

School Name _____

Country _____

Start ____/____/____ mm/yyyy End ____/____/____ mm/yyyy

List any other secondary schools you have attended (attach additional pages as necessary)

B. Colleges and Universities

Most recent post-secondary school attended:

College/University Name _____

Country _____

Start ____/____/____ mm/yyyy End ____/____/____ mm/yyyy

College/University Name _____

Country _____

Start ____/____/____ mm/yyyy End ____/____/____ mm/yyyy

If you have more colleges, universities or post-secondary schools, please submit them in this format on a separate sheet of paper and include with your application.



INTO New York at Drew Application Form 2 of 2

C. Gaps in Study

Will it be more than four (4) months between the time you completed study at your most recent educational institution and the start of your program?

Yes No

If yes, will you have attended a school, college or university in that time?

Yes No

If yes, is that school or university indicated on this application or a separate sheet of paper?

Yes No

Section 5

Test Scores

Please indicate all test scores completed. Copies of test results may be used for evaluation, but official results must be received prior to registration. Test scores are not required for admissions. It is strongly recommended that students submit an English language proficiency test.

A. English Language Test Scores

Language scores are valid for two years after the test date and will be considered expired if over two years old at the time of program start date.

TOEFL IELTS PTEA Password

I do not plan on taking an English language requirement test.

B. Academic Test Scores (scores are valid for 5 years)

SAT ACT

I do not plan on taking an academic test.

Section 6

Housing

All students are required to live on campus and will be assigned a double room/shared bathroom. Students are required to live on campus for the duration of their 2-year Pathway program, and any time spent in Academic English.

Meal Plan Membership

Please note that your housing selection will include a meal plan. Visit intohigher.com/newyork for details. If you are not living in on-campus housing, you will have the option to purchase a meal plan when you arrive.

Section 7

A. Required of All Students

Disciplinary Action

Are you currently, or have you ever been, charged with or subject to disciplinary action for scholastic (such as plagiarism or cheating) or any other type of behavioral misconduct at any educational institution?

Yes No

Criminal Conviction

Have you ever been charged with a violation of the law, misdemeanor and/or felony (even if adjudication was withheld) that resulted in, or if still pending, could result in probation, community service, restitution, a jail sentence or the revocation or suspension of your driver's license? (You are not required to include traffic violations that only resulted in a fine).

Yes No

If your answer to any of the preceding is YES, details of any offenses should be included on a separate sheet of paper. If your records have been expunged pursuant to applicable law, you are not required to answer YES to these questions. If you are unsure whether to answer YES, we strongly suggest that you answer YES and fully disclose all incidents. By doing so, you can avoid any risk of disciplinary action or revocation of your offer of admission.

University Conduct

All admitted students must read and agree to abide by the Drew University policies and procedures. Upon receiving an offer of admission, prospective students will receive detailed information on the Drew University policies and procedures as it relates to conduct and behavior. Students who fail to abide by the university policy and procedures may be dismissed from the university. If admitted, do you agree to read and abide by Drew University policy and procedures?

Yes No

I confirm that I have included information on all of my academic studies and will not pursue further study prior to joining this university. Failure to provide this information can result in dismissal from the university.

Payment of Fees

I agree to pay all tuition and accommodation fees incurred by the student as they become due.

Authorization for Release of Information

I agree that Drew University and INTO New York at Drew University (to the extent it may be covered by FERPA) may release my student record as necessary to facilitate admissions, enrollment, and continued progress through any academic program at Drew, INTO New York at Drew, or to any other INTO Center in the United States. This authorization specifically permits the sharing of information between Drew and INTO New York at Drew, or to any other entity directly responsible for my recruitment or continued participation in the INTO New York at Drew program.

Medical Insurance

The full cost of the INTO New York at Drew student health insurance plan will be added to the invoice, unless proof of adequate alternative coverage is given to and approved by INTO New York at Drew as comparable coverage. Admitted students will receive more information about student health insurance once they arrive.

Terms and Conditions

I state that I have read and understood the INTO New York at Drew brochure and agree to abide by the 2016-17 Terms and Conditions found online:

intohigher.com/newyork/terms

Signed

(Student)

Date / / mm/dd/yyyy

Student's Name

(Please Print)

Students under 18

All students under the age of 18 must have all applications and contracts signed by a parent/guardian or sponsor.

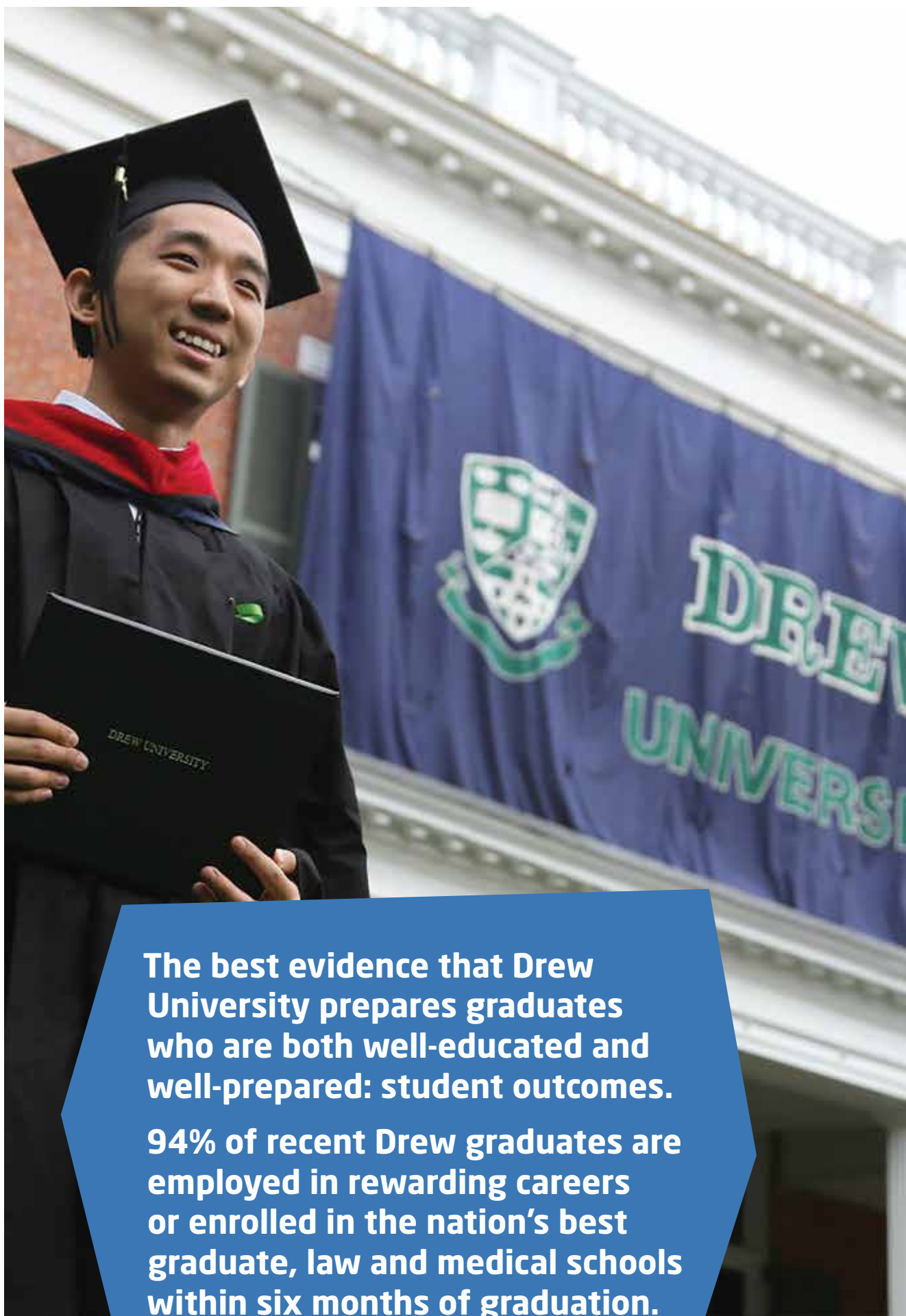
Signed

(Parent/Guardian/Sponsor - if student is under 18)

Date / / mm/dd/yyyy

Parent/Guardian/Sponsor Name

(Please Print)



The best evidence that Drew University prepares graduates who are both well-educated and well-prepared: student outcomes.

94% of recent Drew graduates are employed in rewarding careers or enrolled in the nation's best graduate, law and medical schools within six months of graduation.

INTO New York at Drew University

Affidavit of Support



I, _____ hereby certify that I am willing
 (Print name of family member/personal sponsor)

and able to provide the amount of \$ _____ in US dollars to meet the expenses incurred
 by _____
 (Print student's full name)

during the length of the student's study to which their application pertains.

My relationship to the student is that of: _____. I have authorized the release of my supporting financial documents to verify that the promised financial resources are available to me. I affirm that I know and understand the contents of this affidavit signed by me and that the statements are true and correct.

Required:

Signature of family member/personal sponsor: _____ Date: _____

Declaration of Finances

U.S. immigration law requires the University to verify that any student seeking an F-1 visa has sufficient funds to finance their studies for the duration of their program. If it is determined that you are admissible to INTO New York at Drew, we will provide you with an I-20 (F-1) certificate of eligibility document only after you submit satisfactory evidence that you have adequate funds for your proposed program of study. Acceptable financial documents must not have been issued more than six (6) months before the date you intend to enroll at INTO New York at Drew and must accompany this form.

Additional Support Needed for Dependents

If you have a spouse or children that will accompany you to the United States, you must include a minimum of an additional \$5,000 per year for your spouse and \$5,000 per year for each additional dependent. Please note that this estimate for dependents is the minimum amount you must show. If purchasing insurance in the U.S. for dependents, actual costs for your dependents will likely increase.

Certification of Financial Support

Example Sources of Funding and Required Documentation. All amounts must be in United States currency or show applicable conversion rate.

Source of Funding	Required Documentation
Personal bank statement (checking/savings)	Certified bank letter/bank statement
Parent(s)/Personal sponsor(s)	Affidavit of Support (attached) and certified bank letter/bank statement
Government agency (home country)	Letter of award
Graduate assistantship/fellowship	Letter of award (copy)

For cost estimates for I-20 purposes, visit: intohigher.com/newyork/funds

Country Scales - Undergraduate Pathway

Country	Drew Undergraduate Pathway
GCSE/IGCSE	5 subjects, 3 grades C or better, 2 grades D or better. Subjects must include: mathematics, English, social science and science
GCSE/IGCSE A-Levels	Must have 2 A level grades. 1 C or better, and 1 D or better
IB Diploma	24, or Average grades of 4 or higher, if by individual grades
Azerbaijan	Orta Təhsil Haqqında Şəhadətnamə with minimum 3.5 out of 5 or 65%
Bahrain	Tawjihiya with minimum 55%
Bangladesh	Higher Secondary Certificate with minimum 3.5 out of 5 or 50%
Brazil	Certificado de Conclusão de Ensino Médio with minimum 6.5 out of 10 or 65.5%
Cameroon	See GCE O-levels and A-levels or Upper Secondary with Baccalauréat with minimum 12 out of 20
China	Senior High School Graduation/Completion minimum 65% (4 point scale), 75% (5 point scale), 115% out of 150%, or 2.5 (4.0 point scale)
Colombia	Bachillerato Académico with minimum 75% or 7 out of 10
France	Baccalauréat de l'enseignement du second with minimum 11 out of 20
Gambia	WAEC with 5 subjects passed, no grade below C6, and minimum 2 Cs
Georgia	Sashualo Ganatlebis Atestasi or Sashualo Skolis Atestati with 6.5 out of 10, 4.5 out of 7, or 2.5 out of 4.0
Germany	Zeugnis der Allgemeinen Hochschulreife (Abitur) or Zeugnis der Fachhochschulreife with minimum 3 out of 6
Hong Kong	HKSE with minimum pass of 5 academic subjects, minimum grade of level 2
India	Higher Secondary Certificate or the Standard 12 with minimum of 50%, C1 (CBSE), or 5 out of 9 (CISCE)
Indonesia	SMA/STTB with minimum 6.5 out of 10
Iran	Diplom Metevasheteh with minimum 12.5 out of 20
Italy	Diploma di Licenza Linguistica with minimum 7 out of 10 or Diploma di Maturita Classica with minimum 75 out of 100
Japan	Kōtō Gakkō Sotsugyō Shōmei-sho with minimum 3.5 out of 5.0
Kazakhstan	Senior secondary education with Attestat with minimum 3.5 out of 5.0
Kenya	KCSE with minimum 7 out of 12
Kuwait	Shahadat-al-thanawia-al-a'ama with minimum 75%
Kyrgyzstan	Certificate of Completed Secondary Education earning an Attestat o Srednem Obrazovanii with minimum 3.5 out of 5.0
Libya	General or Specialized secondary school with Secondary Education Certificate with minimum 180 out of 260 (Literary) or 230 out of 330 (Science)
Macau	Higher Secondary (Form 5/Senior Two or Form 6/Senior Three) with minimum 65% plus A levels (for English education system)
Malaysia	SPM with minimum 5.0 out of 9; average 8 on 18 point scale, or STPM 2.5 on 4.0 scale
Mexico	Diploma/Certificado with minimum 75%
Mongolia	School-leaving certificate with minimum 3.5 out of 5.0
Myanmar	Higher secondary with 45%, 420 out of 600, or 3.5 out of 5.0
Nepal	Higher secondary certificate with 73-74 (high C) out of 100
Nigeria	WAEC with 5 subjects passed with at least 3 grades of 6/C or better and 3 grades 7/D or better (English, Math, SS, Science)
Qatar	Al-Thanawaya Al-Amah with minimum 62%
Russia	Certificate of Complete Secondary Education with minimum 3.5 out of 5.0
South Korea	High School with minimum 75% or ranking 5 out of 9
Saudi Arabia	Tawjihiyah with minimum 75%
Singapore	See GCE O-levels and A-levels
South Africa	NSC with minimum 55%
Spain	Titulo de Bachillerato with minimum 5.5 out of 10
Sweden	Avgångsbetyg/Slutbetyg with minimum C on A-F scale
Taiwan	Senior high school leaving certificate with minimum 65%
Tanzania	See GCE O-levels or ACSE with minimum E
Thailand	Maw 6 (M6) and the Certificate of Secondary Education with minimum 2.5 out of 4 or 65%
Turkey	Lise Diploması with minimum 60% or 3.5 out of 5
United Arab Emirates	Tawjihiyya with minimum 75%
Ukraine	Upper secondary with minimum 6.5 out of 12 or 3.5 out of 5
Uzbekistan	Diploma of Specialised Secondary Education (Orta Ma'lumot To'g'risida Shahodatnoma) with minimum 70% or 3.5 out of 5
Venezuela	Título de Bachiller ("en" track taken) and Certificación de Calificaciones with minimum 12 out of 20
Vietnam	Upper secondary with minimum 6.5 out of 10
Zimbabwe	Form 4 with Zimbabwe Certificate of Secondary Education at O-level with minimum C or Form 5&6 with minimum D and no E grades

This guide is used for evaluation purposes by the Drew University Office of Admissions and is supplied here for reference only. Meeting the requirements listed here does not necessarily indicate that a student will qualify for admission to Drew University or INTO New York at University.

When referring to the following guides, be aware that this is not inclusive of all grading requirements. Grading systems and educational structures vary widely around the world and we evaluate each application individually to determine if the applicant meets the standards for success at Drew University.

Please also be aware that requirements by country are updated and adjusted appropriately throughout an academic year and might not be current in this brochure. For a more recent list of country evaluation scales and graduate level scales, please visit our website at: intohigher.com/newyork/country-scales

English Waiver Guidelines

English Waiver Exemptions	Drew Undergraduate Pathway Program - Standard	Drew Undergraduate Direct Entry
IELTS	5.5 (5 subscores)	6.5 (6 subscores)
TOEFL	60 (11 subscores)	80 (18 subscores)
Password	6	No
PTEA (Pearson)	44	59
IB	English HL: 4	English A HL: 5
IGCSE/GCSE	English First Language with C or better.	English First Language with C or better.
A Levels (A/AS)	English First Language with C or better.	English First Language with C or better.
US High School	3 final years of high school in English, mainstream English classes, with grades of C or better in non-ESL classes.	3 final years of high school in English, mainstream English classes, with grades of B or better in non-ESL classes.
English-Speaking Canadian or American-International High School	Grade of C or better in mainstream, non-ESL English courses.	Grade of B or better in mainstream, non-ESL English courses.
SAT	400 Verbal	500 Verbal
ACT	17 English/Reading	19 English/Reading
HKDSE	English Level 3 or better	No
Malaysia SPM	English 119 with C or better	No
Australia	Yes	Yes
Canada, except Quebec (French)	Yes	Yes
Commonwealth Caribbean (Anglophone), including Antigua, Bahamas, Barbados, Belize, Bermuda, Cayman Islands, Jamaica, Trinidad & Tobago	Yes	Yes
Irish Republic	Yes	Yes
New Zealand	Yes	Yes
Puerto Rico	Yes	Yes
Singapore	Yes	Yes
South Africa (If Afrikaans is not native language)	Yes	Yes
Uganda	Yes	Yes
United Kingdom (England, Scotland, Ireland, Wales)	Yes	Yes

*For citizens of African countries whose official language is English, waivers will be granted on a case-by-case basis if the medium of instruction in the high school was English.

Dates, Tuition and Fees

Drew University

Rates are an estimate and subject to change. All prices in US dollars.

By Academic Year There are two main semesters per academic year (Fall, Spring), each about 16 weeks long. In addition, there is a January term and Summer term.

Drew University Estimated Tuition and Fees

The following prices are based on 2015-16 prices or estimates and are subject to change.

	Tuition and Fees	Housing and Meals	Books	Health Insurance	Miscellaneous	Total Expenses
Undergraduate Direct Entry Full Time (32 credits, 16 per semester)	\$48,154	\$13,307	\$1,197	\$1,493	\$2,252	\$66,402

A 12-week Summer semester is offered at additional cost. For more information, please visit drew.edu/fba/tuition-fees

Start Dates for Drew University Degree Programs

Semester	First Day of Classes	Application Deadline*	Application Fee
Fall 2016	August 29, 2016	February 16, 2016*	\$60
Spring 2017	January 16, 2017	December 1, 2016	\$60

*Applications are accepted after the deadline as space is available.

Estimated Costs

Drew and INTO New York at Drew Programs

Rates are an estimate and subject to change. All prices in US dollars.

Please visit intohigher.com/newyork/costs for more information.

Drew University Estimated Tuition and Fees

The following prices are based on 2015-16 prices or estimates and are subject to change.

	Tuition and Fees	Housing and Meals	Books and Supplies	Health Insurance*	Miscellaneous	Total Expenses
Undergraduate Direct Admission (1 Year - 2 Semesters)	\$48,154	\$13,307	\$1,197	\$1,493	\$2,252	\$66,402
Undergraduate Standard Pathway (1 Year - 2 Semesters)	\$45,000	\$19,200	\$1,197	\$1,493	\$2,252	\$69,142
Academic English (1 Semester)	\$7,210	\$9,600	\$250	\$714	\$1,126	\$18,900

*Charged upon arrival

Dates, Tuition and Fees

INTO New York at Drew University

Rates are an estimate and subject to change. All prices in US dollars.

By Academic Year There are two main semesters per academic year (Fall, Spring), each about 16 weeks long and a 12-week Summer term.

Tuition for Academic Programs

Program	Year 1 (2 Semesters)	Year 2 (2 Semesters)
Undergraduate 2-Year Pathway Program*	\$45,000	\$45,000

*Minimum four semesters required

Tuition for Language Program

Program	1 Semester	2 Semesters	3 Semesters
Academic English	\$7,210	\$14,420	\$21,630

Start Dates for Academic Programs

2-Year Pathway programs are four semesters.

All Pathway programs can be started in the semester indicated below.

Undergraduate Pathway Programs	Fall 2016 August 21, 2016	Spring 2017 January 11, 2017
Arts	<input checked="" type="radio"/>	<input checked="" type="radio"/>
Business	<input checked="" type="radio"/>	<input checked="" type="radio"/>
Humanities and Social Sciences	<input checked="" type="radio"/>	<input checked="" type="radio"/>
Sciences	<input checked="" type="radio"/>	<input checked="" type="radio"/>
Pre-Engineering	<input checked="" type="radio"/>	<input checked="" type="radio"/>

2-Year Standard Pathway program

Start Dates for Language Program

Program	Fall 2016 August 21, 2016	Spring 2017 January 11, 2017	Summer 2017 May 17, 2017
Academic English	✓	✓	✓

✓ Variable program length

Housing and Dining Services

Housing and dining rates are subject to change.

Housing	Fall 2016	Spring 2017	Summer 2017
Double room/shared bathroom*	\$9,600	\$9,600	\$7,000

*Includes 19 all-you-care-to-eat meals per week plus 100 bonus points meal plan, a linen package and housing between terms.

Miscellaneous Fees and Expenses 2016-17

	One-Time	Per Academic Term
Express Mail	\$100	-----
Books (estimated)	-----	\$581

Deposits 2016-17

Program	Tuition	Housing
Academic English	\$2,000	\$2,000
Pathway Program	\$2,000	\$2,000
Academic English + Pathway	\$2,000	\$2,000

Insurance for entire length of program must be paid in full at time of deposit and is required for confirmation and I-20 generation.

INTO New York at Drew University Scholarships

INTO New York at Drew is committed to helping talented and ambitious international students achieve their academic goals through an elite liberal arts university. In 2016-17 we are investing over \$500,000 in scholarships to help new students attend an INTO New York at Drew Pathway program. Individual scholarship allocations will be very attractive. For more details please contact your INTO regional representative.



A brighter future for just \$25

We're delighted you are considering INTO New York at Drew University for your education and look forward to helping you get started on your path to success.

But did you know there are 57 million children globally not enrolled in school?

Parents everywhere share a desire to give their children the best possible start in life but, sadly, a basic education is still beyond the reach of many young people around the world.

As part of our commitment to learning, we created INTO Giving, a charity that helps improve both access to and quality of education for young people living in difficult circumstances.

When children go to school and learn, they create opportunities that transform and empower their lives and their communities.

Donate \$25 today and help provide the education they deserve.

Every penny of your gift will go straight to the INTO Giving educational projects. Making a gift is easy, simply visit our secure website: www.into-giving.com.

Help transform lives by supporting our educational projects around the world.

INTO »

GIVING

DREW

Want to Find Out More?

If you would like to find out more about any of our programs or services, please visit our website. You also can contact us via email or phone, or visit one of our education counselors in your home country.

Inquiries and Applications

INTO New York at Drew University

Drew University
36 Madison Avenue
Madison, NJ 07940
USA

T: +1 973 408 4961

F: +1 973 408 4960

E: INTOadmissions@drew.edu

W: drew.edu/admissions



intohigher.com/newyork



facebook.com/INTOnewyork



twitter.com/INTO_NewYork



instagram.com/INTO_NewYork



myin.to/NYatDrewYouTube



Download the mobile app at:
intohigher.com/newyork/app

© 2015 INTO USA, LLC. All rights reserved. INTO and the INTO roundel are registered trademarks of INTO University Partnerships Ltd.



Through innovative partnerships with leading universities, we expand opportunities for higher education, ensuring success and transforming the lives of our students and staff.

Education Counselor's Stamp

