



THIS IS AUBURN GLOBAL.

2016 Undergraduate Student Guidebook



THIS IS AUBURN.

THIS IS EXCELLENCE.

1856

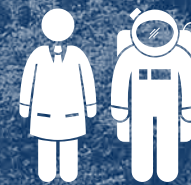
Auburn University
was established

140+

Number of undergraduate
degrees offered at Auburn

NEARLY 300,000

Members in Auburn's
alumni network



One of the top
15 nationally
ranked universities
for producing
NASA scientists
and astronauts



One of Kiplinger's
100 "Best Value" Colleges
— delivering an outstanding
education for less

#46

Top Public University

(U.S. News & World Report, 2016)

#102

National Universities

(U.S. News & World Report, 2016)



Auburn is one of the
Top 10 Best Places to Live
(U.S. News & World Report)

#56

**Best Undergraduate
Engineering Programs**

(U.S. News & World Report, 2016)



One of the "10 Colleges
with the Best Quality of Life"
(The Princeton Review)

#17

**Best Biological/Agricultural
Engineering Schools**

(U.S. News & World Report, 2016)



Auburn-Opelika is ranked
the **4th-most-educated**
metropolitan area in
the country
(New Geography)

#50

Best Undergraduate Business Programs

(U.S. News & World Report, 2016)

SMALL TOWN, BIG EXPERIENCE.

Auburn is a small city with a mild climate and big opportunities. The city's downtown area is within walking distance of campus and includes a variety of restaurants and shops. In a 10-minute drive, you can visit a 16-screen movie theater, a shopping mall, play 90 holes of golf, or visit Chewacla State Park, a public park with 696 acres of hiking and camping.

Around Auburn

Alabama offers fun day-trip options, including relaxing on the beaches of the Gulf Coast or checking out the restaurants, shops, and nightlife in Birmingham. Atlanta, Georgia, the largest city in the Southeast, is just 1.5 hours away. Atlanta is home to the nation's busiest airport (making it easy to fly home when you need to) and more than a dozen Fortune 500 companies.

Major manufacturing industries in Alabama include electronics, textiles, and automobiles. Hyundai and its sister company, Kia, the fourth-largest automaker in the world, have U.S. manufacturing operations in Alabama. These companies have brought thousands of well-paying jobs and economic vibrancy to the region.



On Campus

Throughout the year, Auburn's campus hosts a variety of concerts, cultural and sporting events, international festivals, and art exhibits. Amid classes and studying, you can join student organizations or perhaps an intramural sports team. Some days, you'll just want to stroll around campus with friends, picnic in the Davis Arboretum (a 13.5-acre nature preserve on campus), or gather your books for an outdoor study session.

Sports and Recreation

auburn.edu/campusrec

Campus Recreation provides programs for and supervision of Auburn's recreational areas.

The 240,000-square-foot Recreation and Wellness Center offers a 1/3-mile indoor track, cardio workout areas, weight-lifting areas, a virtual golf simulator, a zipline, three rock-climbing walls, personal training and group fitness classes, a 40-person hot tub, and a leisure pool.

Safety

Many students choose Auburn for its small-town environment. The campus supports security measures including an extensive closed-circuit surveillance system, nighttime police escorts, and the nightly Tiger Transit security shuttle.

Transportation

auburn.edu/transit

Auburn Global students with a valid Auburn ID card have unlimited access to Tiger Transit routes. Tiger Transit operates 20 transit lines that run throughout the town and campus during the day and within campus at night.





CHOOSE YOUR DEGREE

Areas of study subject to change. For the most up-to-date list of degree programs, please see auburnglobal.org.

College of Agriculture

- › Agricultural Business & Economics
- › Agricultural Communications
- › Agronomy & Soils — Business Track
- › Agronomy & Soils — Production Track
- › Agronomy & Soils — Science Track
- › Agronomy & Soils — Soil, Water & Land Use Option
- › Agronomy & Soils — Turfgrass Track
- › Animal Sciences — Equine Science Option
- › Animal Sciences — Muscle Foods Option
- › Animal Sciences — Production Management Option
- › Biosystems Engineering
- › Biosystems Engineering — Ecological Engineering Option
- › Biosystems Engineering — Forest Engineering Option
- › Environmental Science
- › Fisheries & Allied Aquacultures
- › Fisheries & Allied Aquacultures — Pre-Professional Option
- › Horticulture — Fruit & Vegetable Production Emphasis
- › Horticulture — Landscape Horticulture Emphasis
- › Horticulture — Nursery & Greenhouse Science Emphasis
- › Horticulture — Pre-Landscape Architecture Emphasis
- › Poultry Science — Food Science
- › Poultry Science — Poultry Processing & Products
- › Poultry Science — Poultry Production

College of Architecture, Design & Construction

- › Architecture — Summer Design
- › Architecture/Interior Architecture — Summer Design
- › Building Science
- › Environmental Design
- › Environmental Design — Pre-Landscape Architecture
- › Graphic Design
- › Industrial Design

Raymond J. Harbert College of Business

- › Accountancy
- › Aviation Management
- › Business Administration
- › Business Analytics
- › Entrepreneurship & Family Business
- › Finance
- › Human Resources Management
- › Information Systems Management
- › International Business
- › Management
- › Marketing
- › Professional Flight Management
- › Supply Chain Management

College of Education

- › Agriscience Education
- › Business & Marketing Education
- › Chemistry Education
- › Collaborative Teacher Education
- › Early Childhood Education
- › Early Childhood Special Education
- › Elementary Education
- › English Language Arts Education/English
- › Exercise Science
- › Fitness, Conditioning & Performance
- › Foreign Language Education — French
- › Foreign Language Education — German
- › Foreign Language Education — Spanish
- › General Science Education/Biology
- › General Social Science Education/History
- › Mathematics Education
- › Music Education/Instrumental & Vocal

- › Physical Activity & Health
- › Physical Education/Teacher Education
- › Physics Education
- › Rehabilitation & Disability Studies

School of Forestry & Wildlife Sciences

- › Forestry
- › Natural Resources Management Forestry
- › Information Systems Management
- › Wildlife Ecology & Management

Samuel Ginn College of Engineering

- › Aerospace Engineering
- › Biosystems Engineering
- › Biosystems Engineering — Ecological Engineering Option
- › Biosystems Engineering — Forest Engineering Option
- › Chemical Engineering
- › Civil Engineering
- › Computer Science
- › Electrical Engineering
- › Electrical Engineering — Computer Engineering Option
- › Industrial & Systems Engineering
- › Materials Engineering
- › Mechanical Engineering
- › Software Engineering
- › Wireless Engineering — Hardware Option
- › Wireless Engineering — Software Option

College of Human Sciences

- › Apparel Merchandising, Design & Production Management — Apparel Design & Production Management Option
- › Apparel Merchandising, Design & Production Management — Merchandising Option
- › Global Studies in Human Sciences
- › Hotel & Restaurant Management
- › Human Development & Family Studies
- › Interior Design
- › Nutrition — Nutrition/Dietetics Option
- › Nutrition — Nutrition Science Option
- › Nutrition — Wellness Option

College of Sciences & Mathematics

- › Actuarial Science
- › Applied Discrete Mathematics
- › Applied Mathematics
- › Biochemistry
- › Biomedical Sciences
- › Chemistry, BA
- › Chemistry, BS
- › Geography
- › Geology
- › Laboratory Technology
- › Marine Biology
- › Mathematics Microbial, Cellular & Molecular Biology — Cell & Molecular Biology Option (MCCM)
- › Microbial, Cellular & Molecular Biology — Microbiology Option (MCMB)

- › Organismal Biology — Conservation & Biodiversity Option
- › Organismal Biology — Ecology, Evolution & Behavior Option
- › Organismal Biology — Integrative Biology Option
- › Physics

School of Nursing

- › Nursing — Traditional

University College

- › Interdisciplinary Studies

College of Liberal Arts

- › Anthropology
- › Art
- › Art History
- › Art — Studio/Fine Arts
- › Communication
- › Communication Disorders
- › Economics — Primary Track
- › Economics — Quantitative Track
- › English — Creative Writing
- › English — Literature
- › English — Professional & Public Writing
- › French
- › French International Trade
- › German
- › German International Trade
- › Health Services Administration
- › History
- › Journalism
- › Media Studies

- › Media Studies — Visual Media Option
- › Music
- › Music Performance — Instrumental
- › Music Performance — Piano
- › Music Performance — Voice
- › Philosophy
- › Political Science
- › Public Administration
- › Public Relations
- › Psychology
- › Spanish
- › Spanish International Trade
- › Social Work
- › Sociology
- › Theatre
- › Theatre — Design/Technology
- › Theatre — Music Theatre
- › Theatre — Performance
- › Theatre — Production & Management

98% OF
RESPONDING ALUMNI
HIGHLY RATED
THEIR DECISION
TO ATTEND AUBURN.



THIS IS YOUR PATH TO SUCCESS.

Many universities offer comprehensive degrees and impressive academic rankings, so what makes Auburn University so different?

At Auburn, you will feel connected to your fellow students from the first time you arrive on campus until you graduate. Our students describe the atmosphere as “just like family.” Even after you’ve set off to begin a career, you will forever be part of the Auburn Family and have a network of nearly 300,000 alumni across the world to help you succeed.

We asked three of our current international students to tell us about Auburn’s unique school spirit and traditions.



ABHEESHTA GONE FROM INDIA (MS Electrical and Computer Engineering) describes how Auburn’s students, staff, alumni, and parents are more than a university community – they are a family:

“When I first came to the U.S., I knew no one here. But from the moment I arrived at Auburn, I was encouraged to become part of the university, so I soon started to feel that, yes, this is my family. And I believe we all think like that at Auburn. You can’t escape the Auburn spirit when you’re here. Even when I go back to India, I’ll still be a part of the Auburn Family. It’s a feeling. And it’s great to be a part of it.”



“War Eagle!” You’ll hear this greeting on campus, across the country, even the world. Why do we say this at Auburn? And when? **SAMINDA GUNATHILAKE FROM SRI LANKA (BME Mechanical Engineering)** explains:

“War Eagle is a way you can just say ‘hey’ or ‘hello.’ As an Auburn student, if you see another Auburn fan anywhere in the world, you can say, ‘War Eagle’ to them. They will always say it back. This happens to me all the time, even in Dubai or Sri Lanka. Whenever I’m wearing an Auburn hat or an Auburn jersey, another Auburn fan calling ‘War Eagle’ is a great thing to hear. It’s also our battle cry or war chant at football games: the crowd will shout ‘Warrrrrrrrrr Eagle!’”



All Auburn students love to cheer on our football team, the Auburn Tigers. Entertainment at the games isn’t provided only by the players – you can also enjoy spectacular performances by Auburn University’s marching band and watch the famous macot, Aubie. **ZEQUN LIU FROM CHINA (BSBA Information Systems)** introduces us to Aubie:

“Aubie is Auburn University’s tiger mascot. He’s a very fun and friendly tiger who supports our teams at sports events and participates in community service alongside students. He’s basically an ambassador for Auburn. And he’s an eight-time National Mascot Champion – he’s got to be one of the best mascots in the country.”

DISCOVER THE ULTIMATE AMERICAN COLLEGE EXPERIENCE.

For international students, the transition from high school in your home country to a university in the United States can be challenging — a new language, new ways of learning, and a new home. The Undergraduate Accelerator eases this transition by combining credit-bearing courses from the first year of your degree with additional academic support, English-language instruction, and cultural experiences. Together, these facets of the program combine to create a learning-centered environment that promotes academic success, active involvement in campus life, and community engagement.

THE UNDERGRADUATE ACCELERATOR FIRST-YEAR EXPERIENCE

The Undergraduate Accelerator comprises three distinct programs: Extended Accelerator, Academic Accelerator, and Integrated Accelerator. The program that’s right for you will depend on your academic background, level of English-language proficiency, and personal preferences; however, all Undergraduate Accelerator programs offer the following:

- **FLEXIBILITY.** With the U.S. academic model, you can change majors and explore what interests you, customize your educational experience, and pursue your dreams.
- **PRE-SESSIONAL ENGLISH.** 16-week sessions of English-language training can help you improve your English skills and prepare you for entry into your program.
- **24/7 DESIGNATED SUPPORT.** As an Undergraduate Accelerator student, you and your family benefit from round-the-clock support for help with all matters, large or small.
- **DEDICATED SUPPORT SERVICES TEAM.** New students receive support on all issues, academic and personal, as well as help with practicalities such as airport pickup, opening a bank account, and mobile phone registration. Your support team will include:
 - Student Services Advisor
 - Regular tutoring sessions
 - Career Advisors
 - Academic Advisors
- **SMALL CLASS SIZES.** You are given greater individual attention and tailored support with Auburn Global’s small class sizes.
- **AMERICAN CULTURAL EXPERIENCES.** The Live, Learn, Grow course gives you the social, professional, and academic skills to succeed beyond the Undergraduate Accelerator. Best of all, it includes eight cultural experiences that connect you with your fellow students and your community. These experiences might include cheering on Auburn at a football game or having a picnic in the Davis Arboretum.
- **CAREER ACCELERATOR PROGRAM.** Through the two-year CAP program, you’ll enhance your employability, gain skills to advance your academic performance, and access opportunities for real-world work placement, either during your degree or upon graduation.



COURSE SPOTLIGHT: LIVE, LEARN, GROW.

Depending on your specific program track, you will take either one, two, or three semesters of the Undergraduate Accelerator’s signature course: Live, Learn, Grow. The course curriculum’s skills-based and experiential approach is critical to your personal and professional growth, and helps to ensure your success at Auburn and beyond.

- Acquire essential information for day-to-day life at Auburn as you navigate your immediate physical and emotional surroundings, and immerse yourself deeper into the Auburn community.
- Become a well-rounded, autonomous learner by exploring the individual nature of learning and employing active-learning exercises to demonstrate effective learning strategies.
- Share your experiences, document your growth, and articulate your personal, academic, and professional goals, while simultaneously building technical skills through the use of mixed media tools and techniques.

PREPARE FOR SUCCESS.

EXTENDED ACCELERATOR PROGRAM

The Extended Accelerator Program (EAP) is a three-semester program for students seeking an immersive English-learning experience. The program gives students a firsthand practical and cultural understanding of the Auburn University campus and the Auburn, Alabama area through its contextual curriculum. Students may enter the program in the spring, summer, or fall. Upon completion of the program, students progress into year two of their undergraduate education with a full year’s worth of academic credits.

- **An immersive educational experience** with a contextual curriculum bridging language, culture, and academics.
- **Bolster your academic achievement** with turbo-charged English-language instruction, tutoring, academic advising, and student support.
- **Auburn in the World** is a unique course designed for international students that will deepen your working knowledge of life in the United States and give you a comprehensive understanding of the local community and region.
- **Benefit from personalized English-language instruction** that’s fully contextual – for instance, lab-specific English-language instruction alongside your lab-science course.

Learning Track Elective Areas

Depending on their choice of major, students will follow an elective curriculum based on one of the following three tracks:

- Humanities and Social Sciences
- Science, Technology, Engineering, and Mathematics (STEM) and Information Sciences
- Business, Finance, and Economics

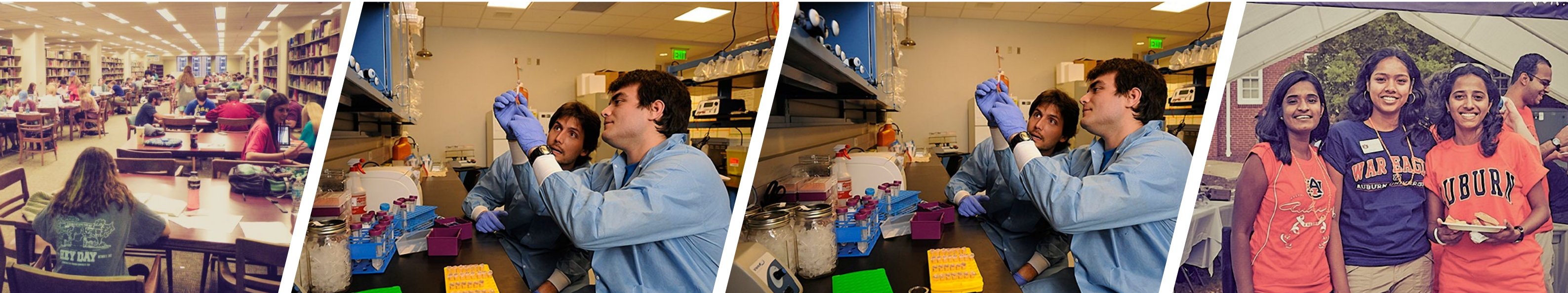
Sample Curriculum

	SEMESTER 1	SEMESTER 2	SEMESTER 3
Support	• Live, Learn, Grow	• Live, Learn, Grow	• Live, Learn, Grow
English	• English for Academic Purposes (EAP) • Technology for Academic Purposes (TAP)	• English Course Supplements • Writing Proficiency for International Students	• Public Speaking or • English Composition
Core Curriculum	• Auburn in the World: Industry and Society (including Integrated English Lab) • Auburn in the World Lab • College Algebra, Pre-Calculus, Calculus*	• Principles of Microeconomics (including English Supplement) • World History I (including English Supplement) • Introduction to Film • College Algebra, Pre-Calculus, Calculus*	• World History II • Global Geography • Core Science I (with Lab) Learning Tracks: 1. Humanities: Introduction to Psychology 2. STEM: Physics 3. Business: Principles of Macroeconomics

This is a sample curriculum and may be subject to change.
*Math course placement to be determined by results of math placement test, which will be administered online prior to arrival on campus.



Upon successful completion of your Undergraduate Accelerator program, you will progress to year two of your chosen degree.



BE EMPOWERED.

ACADEMIC ACCELERATOR PROGRAM

The Academic Accelerator Program (AAP) is a two-semester program designed specifically for students who are ready to succeed in immersive English-speaking classrooms, but who also want the benefit of English-language and student support that will help them thrive. The program curriculum offers a balance of University-wide and AAP-exclusive courses, with English-language course supplements that equip students with the practical, subject-specific vocabulary and skills they need to excel in their coursework. Students may enter the program in the spring, summer, or fall. Upon completion of the program, students progress into year two of their undergraduate education with a full year’s worth of academic credits.

- **Just the right amount of support when you need it.**
The Academic Accelerator Program features a curriculum designed to accommodate your academic and English-language needs.
- **English-language instruction** designed around your social and academic needs; for example, you will be prepared specifically for the classes you will take, such as Algebra and World History.
- **Credit-bearing**, so you can earn a full freshman year’s-worth of credits while taking courses tailored to your needs as an international student, helping you achieve your academic and career goals.
- **Integrated with open and closed courses**, so you’ll be in some classes with U.S. students and others with your designated Undergraduate Accelerator cohort.

Learning Track Elective Areas

Depending on their choice of major, students will follow an elective curriculum based on one of the following three tracks:

- Humanities and Social Sciences
- Science, Technology, Engineering, and Mathematics (STEM) and Information Sciences
- Business, Finance, and Economics

Sample Curriculum

	SEMESTER 1	SEMESTER 2
Support	• Live, Learn, Grow	• Live, Learn, Grow
English	• English Supplements (A-C) • Writing Proficiency for International Students	• Public Speaking or • English Composition
Core Curriculum	• Principles of Microeconomics (including English Supplement) • World History I (including English Supplement) • College Algebra, Pre-Calculus, Calculus* • Introduction to Film	• World History II • Global Geography • Core Science I Learning Tracks: 1. Humanities: Introduction to Psychology 2. STEM: Physics 3. Business: Principles of Macroeconomics

This is a sample curriculum and may be subject to change.
* Math course placement to be determined by results of math placement test, which will be administered online prior to arrival on campus.



GET MORE THAN HIGH MARKS.

INTEGRATED ACCELERATOR PROGRAM

The Integrated Accelerator Program (IAP) is a two-semester program designed specifically for international students with an advanced level of English-language proficiency but who also want the academic, cultural, professional, and linguistic support they need to thrive at Auburn University. The program features a robust advising and mentorship component, as well as access to courses that will shape the foundation of your Auburn career. Students may enter the program in the spring, summer, or fall. Upon completion of the program, students progress into year two of their undergraduate education with a full year’s worth of academic credits.

- **For the high-achieving international student**, the Integrated Accelerator Program provides an exclusive and academically rigorous freshman-year experience.
 - **Have access** to a selection of fully integrated courses hand-picked by your academic advisor, which are tailored to your interests and career goals.
- **Bolster your success** with coaches and mentors that help ensure you have access to the resources you need to get the most out of your education and your experience in the United States.
 - **Expand your network** through career preparation and programming that deepens your connection to the University, your fellow students, and potential employers.

Learning Track Elective Areas

Depending on their choice of major, students will follow an elective curriculum based on one of the following three tracks:

- Humanities and Social Sciences
- Science, Technology, Engineering, and Mathematics (STEM) and Information Sciences
- Business, Finance, and Economics

Sample Curriculum

	SEMESTER 1	SEMESTER 2
Support	• Live, Learn, Grow	• Live, Learn, Grow
English	• English Supplements (A-C) • Writing Proficiency for International Students	• Public Speaking or • English Composition
Core Curriculum	• Principles of Microeconomics (including English Supplement) • World History I (including English Supplement) • College Algebra, Pre-Calculus, Calculus* • Introduction to Film	• World History II • Global Geography • Core Science I Learning Tracks: 1. Humanities: Introduction to Psychology 2. STEM: Physics 3. Business: Principles of Macroeconomics

This is a sample curriculum and may be subject to change.
* Math course placement to be determined by results of math placement test, which will be administered online prior to arrival on campus.



THIS IS REAL-WORLD SUCCESS.

The Auburn Global Career Accelerator Program.

Looking to get a head start on your professional future? If you choose to participate in our Career Accelerator Program (CAP) alongside the Undergraduate Accelerator and your degree, you'll enhance your employability, gain skills to advance your academic performance, and access opportunities for real-world work placement, either during your undergraduate studies or upon graduation.

The Auburn Global Career Accelerator Program spans two years and is tailored to the unique experience of international students. Develop the skills to stand out in a crowded global job market while exploring career interests, practicing interviewing skills, developing a powerful résumé or CV, and connecting with potential employers.

To be eligible for internship placement assistance, students must:

- Successfully complete all required elements of the CAP
- Have at least a 3.3 GPA
- Have maintained appropriate immigration status in the United States.

Once you begin the program, you will have access to advisors who will help you successfully navigate these requirements.

For more information, see auburnglobal.org.



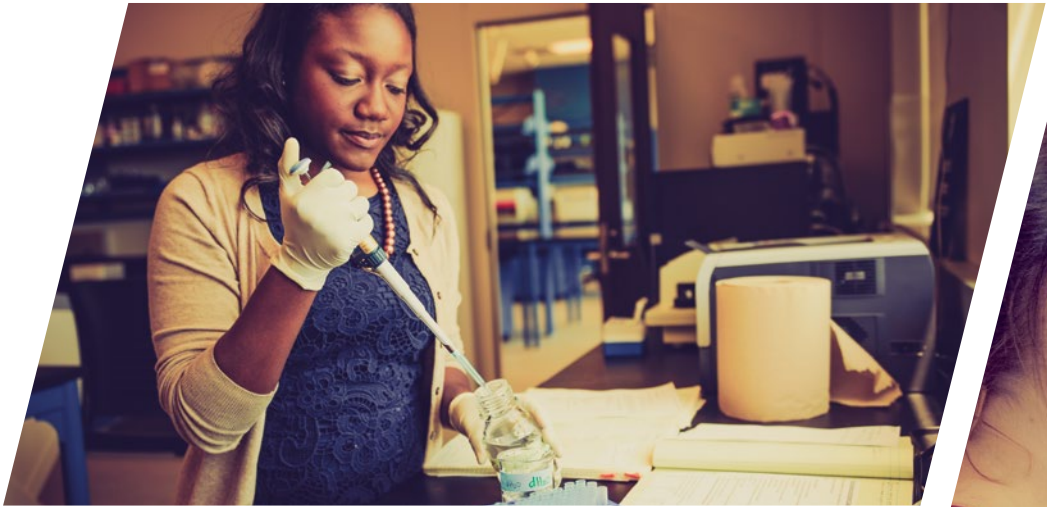
The Career Accelerator Program connects qualified Auburn Global students to partner organizations with exciting internship opportunities.

THE CAREER ACCELERATOR PROGRAM

Designed by experts and tailored for international students, the Auburn Global CAP is customized to suit your individual goals.



This is a sample timeline of CAP modules and may be subject to change.





THIS IS CONNECTION.

"I believe in work, hard work." Our students, faculty, and graduates have lived by these words in our Auburn Creed for many years. And the results speak for themselves.

FAMOUS AUBURN ALUMNI



Tim Cook, '82
CEO of Apple, Inc.



Charles Barkley, '84
Professional Basketball Player
and NBA All-Star



Octavia Spencer, '89
Academy Award-Winning Actress



Jimmy Wales, '86
Cofounder, Wikipedia



Jim Voss, '72
Former NASA Astronaut



Harold Melton, '87
Georgia Supreme Court Justice

COMPANIES RECRUITING AUBURN GRADUATES



Auburn alumni are highly sought after by employers and graduate schools. A long list of top companies recruit Auburn graduates. Recent graduates have been hired by multinational companies and accepted to prestigious professional and graduate schools. Whether you know exactly what you want to do after you graduate or you are undecided, the breadth of Auburn's majors, departments, faculty, and successful alumni will take you where you want to go.

HOUSING.

All Undergraduate Accelerator students are required to live in one of Auburn Global's on- or off-campus residences and have a Tiger Dining meal plan. These residences offer excellent facilities located either on campus or a ten- or fifteen-minute walk or bus journey from campus.

On-Campus Residence

On-campus residences are home to U.S. and international students and are located minutes away from classes, the library, and on-campus dining options. Most residences feature a laundry room and either a dining hall or shared kitchen on-site. Rooms are shared with a first-year student and include a shared bathroom. All utilities include cable TV and WiFi.

- Shared room
- Extra-long twin bed (single bed)
- Study desk and chair
- Chest of drawers
- Closet
- Linen pack containing bedding, sheets, pillowcases, and towels

On- and Off-Campus Housing Costs

Spring & Summer 2016 (2 Semesters): \$6,525
Spring & Summer 2016 (3 Semesters): \$9,525
Fall 2016 (2 Semesters): \$7,000
Fall 2016 (3 Semesters): \$10,200

Off-Campus Residence

Off-campus residences include apartment communities located within 10-15 minutes from campus. Tiger Transit buses stop regularly outside these apartments and take students directly to campus. Utilities, high-speed Internet, and cable are included, and many residences have additional amenities such as fitness centers and swimming pools. Off-campus residences provide private rooms within apartments that are shared with two or three other students and are furnished.

- Private room
- Private bathroom
- Full-sized bed
- Study desk and chair
- Chest of drawers
- Closet
- Linen pack containing bedding, sheets, pillowcases, and towels

DINING.

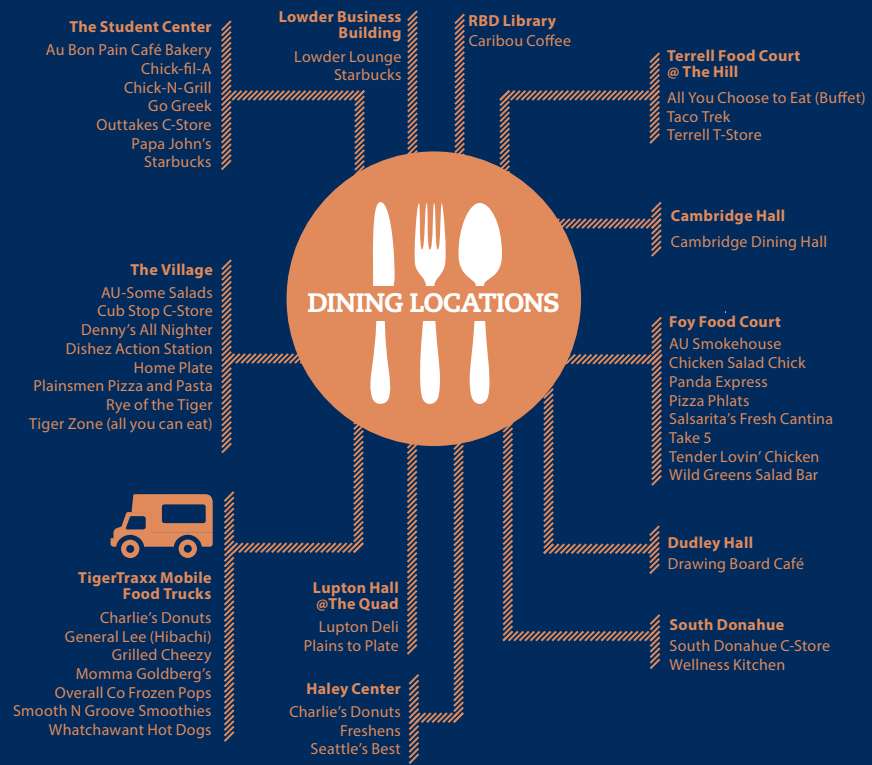
Auburn University's campus dining service, "Tiger Dining," offers a variety of dining options designed to suit busy student schedules. With more than 35 venues across campus, you can purchase meals, food, beverages, and dining services using your personal student photo-ID card, the TigerCard, at all on-campus dining venues.

If you are living in an off-campus residence, you will have a meal plan on campus that allows you to eat at any of the dining facilities on campus or shop at the market on campus for items you may want to bring home.

Meal Plan Costs

Spring & Summer 2016 (2 Semesters): \$4,000
Spring & Summer 2016 (3 Semesters): \$6,000
Fall 2016 (2 Semesters): \$4,500
Fall 2016 (3 Semesters): \$6,500

Please note that prices are subject to increase. Visit auburnglobal.org for the most current pricing. Housing at university residence halls is on a first-come, first-served basis. Other on-campus and off-campus options may be available with different amenities.



WAYS TO ENTER.

Each student’s program track depends upon their academic qualifications, English-language level, and personal preferences. Once you choose your academic program from a comprehensive list of majors, you’ll work with Auburn Global staff to construct a progression plan based on major, language ability, and course load per semester.

	INTEGRATED ACCELERATOR (IAP)	ACADEMIC ACCELERATOR (AAP)	EXTENDED ACCELERATOR (EAP)	PRE-SESSIONAL ENGLISH
THE PROGRAM				
First-Year Program Length	2 semesters/9 months	2 semesters/9 months	3 semesters/12 months	16-week sessions Duration based on English-language proficiency
Program Curriculum	Preset	Preset	Preset	Preset
Total Credits Earned Toward Degree	24-30 credits	24-30 credits	30-37 credits	N/A
Progression Requirements*	Standard freshman progression requirement	GPA 2.0	GPA 2.0	GPA 2.5 and English level equivalent to IELTS 5.0
Progression Into	Year 2	Year 2	Year 2	Extended Accelerator
ADMISSIONS				
GPA Minimum	3.0–4.0	2.5	2.5	2.5
IELTS /TOEFL Minimum	TOEFL iBT 79 IELTS 6.5	TOEFL iBT 68 IELTS 5.5	TOEFL iBT 60 IELTS 5.0	TOEFL iBT < 60** IELTS < 5.0
Application Turnaround Time	< 5 days	< 5 days	< 5 days	< 5 days
Application Deadline***	One month prior to program start date	One month prior to program start date	One month prior to program start date	One month prior to program start date
Fall 2016 Estimated Tuition + Fees	\$44,900	\$44,900	\$53,100	\$6,500****

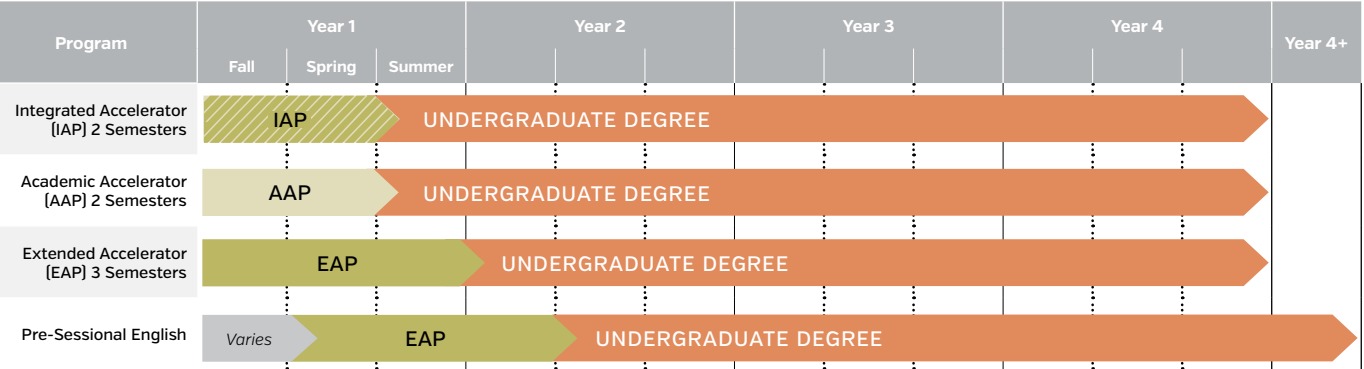
*Some academic majors may have a higher GPA requirement for progression.

** Progression to the Extended Accelerator Program from the Pre-Sessional English program may be faster or slower, depending on your starting level of English-language proficiency, your effort, and your progress.

*** This is the deadline to submit all documents stated on your offer letter and is required for both academic acceptance and I-20 issuance. All necessary items must be received by admissions on or before this deadline or the student will be unable to enroll for the intended semester and will be encouraged to defer enrollment to the following semester.

**** Pre-Sessional English program estimated cost does not include housing, food, and health insurance.

Progression varies based on a student’s English-language ability, degree choice, and course load per semester.



IMPORTANT DATES.

All dates and deadlines are subject to change. Visit auburnglobal.org for the latest information.

////////////////////////////////////

Spring 2016	INTEGRATED ACCELERATOR PROGRAM 2 SEMESTERS	ACADEMIC ACCELERATOR PROGRAM 2 SEMESTERS	EXTENDED ACCELERATOR PROGRAM 3 SEMESTERS	PRE-SESSIONAL ENGLISH PROGRAM 16 WEEKS
Application Deadline*	December 8, 2015	December 8, 2015	December 8, 2015	December 8, 2015
Move-in Date	January 7, 2016	January 7, 2016	January 7, 2016	January 7, 2016
Program Start Date	January 8, 2016	January 8, 2016	January 8, 2016	January 8, 2016

Summer 2016	INTEGRATED ACCELERATOR PROGRAM 2 SEMESTERS	ACADEMIC ACCELERATOR PROGRAM 2 SEMESTERS	EXTENDED ACCELERATOR PROGRAM 3 SEMESTERS	PRE-SESSIONAL ENGLISH PROGRAM 16 WEEKS
Application Deadline*	April 12, 2016	April 12, 2016	April 12, 2016	April 12, 2016
Move-in Date	May 12, 2016	May 12, 2016	May 12, 2016	May 12, 2016
Program Start Date	May 13, 2016	May 13, 2016	May 13, 2016	May 13, 2016

Fall 2016	INTEGRATED ACCELERATOR PROGRAM 2 SEMESTERS	ACADEMIC ACCELERATOR PROGRAM 2 SEMESTERS	EXTENDED ACCELERATOR PROGRAM 3 SEMESTERS	PRE-SESSIONAL ENGLISH PROGRAM 16 WEEKS
Application Deadline*	July 12, 2016	August 1, 2016	August 1, 2016	July 12, 2016
Move-in Date	August 10, 2016	August 31, 2016	August 31, 2016	August 10, 2016
Program Start Date	August 11, 2016	September 1, 2016	September 1, 2016	August 11, 2016

* This is the deadline to submit all documents stated on your offer letter and is required for both academic acceptance and I-20 issuance. All necessary items must be received by admissions on or before this deadline or the student will be unable to enroll for the intended semester and will be encouraged to defer enrollment to the following semester.

THIS IS VALUE.

A degree from Auburn is an investment in your future. From your Undergraduate Accelerator year onward, Auburn offers an exceptional education and countless opportunities to have a fun and fulfilling college experience at an affordable cost.

////////////////////////////////////



Auburn is ranked as one of the “Most Affordable Large Public Colleges” and one of the “Top Affordable Colleges with the Highest ROI” by affordablecollegesonline.org, 2014.

In 2012, *Bloomberg Businessweek* chose Auburn as “Best ROI” for the state of Alabama.

////////////////////////////////////

ESTIMATED ANNUAL COSTS for Integrated Accelerator and Academic Accelerator Programs (2 Semesters)

	Entering Spring & Summer 2016	Entering Fall 2016
Tuition and Fees	\$29,800 USD	\$31,400 USD
Housing	\$6,525 USD	\$7,000 USD
Dining	\$4,000 USD	\$4,500 USD
Health Insurance	\$1,320 USD	\$2,000 USD
Total	\$41,645 USD	\$44,900 USD

ESTIMATED ANNUAL COSTS for Extended Accelerator Program (3 Semesters)

	Entering Spring & Summer 2016	Entering Fall 2016
Tuition and Fees	\$32,800 USD	\$34,400 USD
Housing	\$9,525 USD	\$10,200 USD
Dining	\$6,000 USD	\$6,500 USD
Health Insurance	\$1,980 USD	\$2,000 USD
Total	\$50,305 USD	\$53,100 USD

////////////////////////////////////

Pre-Sessional English

In need of additional English courses before beginning the Undergraduate Accelerator? Enroll in the Pre-Sessional English program. Estimated tuition per 16-week session*: **\$6,500**
After successful completion of the Pre-Sessional English program, students will enter and pay tuition for the Extended Accelerator Program.

* Tuition and Student Services fees may be subject to change and do not include additional expenses (books and general living expenses such as travel and entertainment). Routine increases are likely and will be formally announced no later than May 2016. Visit auburnglobal.org for current cost information.

HOW TO APPLY.



Complete Your Application

E-mail your completed application to admissions@auburnglobal.org or mail it to:

Auburn Global
332 James E. Foy Hall
Auburn University
Auburn, AL 36849



Submit Your Official Transcripts

Mail them to:

Auburn Global
332 James E. Foy Hall
Auburn University
Auburn, AL 36849

You may submit your official transcripts in person upon arrival on campus.

If submitting original transcripts prior to arrival, they must be viewed by an official Auburn Global recruiter, public notary, or regional office and certified with a stamp on the application. Once certified, these can be scanned and emailed with your application to: admissions@auburnglobal.org.

Please note: Students cannot enroll until original transcripts have been received.



Submit Proof of English-Language Ability

If your native language is not English, please submit proof of your English-language ability.

A full list of accepted tests can be found at auburnglobal.org.



Provide Certification of Finances

After your conditional offer is received (congratulations!), you need to submit any additional documents requested in the offer.

You must also provide a Certificate of Finances and accompanying documentation from your bank showing available funds sufficient for your academic program's tuition and fees.

Finally, you must pay a tuition deposit, which will be listed in your acceptance packet.

The deposit will be refunded if the requirements are not met. See Terms and Conditions at auburnglobal.org/terms-and-conditions.



Receive your offer of admission

Have a celebration!



Get Your Visa

Once you are officially admitted to a program, the admissions team at Auburn Global will send you an I-20 request form to apply for visa processing with the U.S. embassy in your country.

Regional teams are located across the world and are ready to assist you with your Auburn Global application and give you advice and guidance throughout the admissions process. Contact admissions@auburnglobal.org and we will direct your query to our team in your region.

auburnglobal.org



AUBURN
GLOBAL

Undergraduate Accelerator Application

PERSONAL DETAILS

Name must appear exactly as shown in applicant's passport.

Title:	Gender:
Family name:	
Given names:	
Preferred name:	
Date of birth (D/M/Y):	
Country of birth:	
Country of citizenship:	
City of birth:	
Passport number:	
Passport date of expiry:	

CONTACT DETAILS

Permanent non-U.S. home address (mandatory):

Address 1:		
Address 2:		
City:		
Region/State/Province:		
Postal code:		
Country:		
Applicant's mailing address in the USA (if applicable):		
City:	State:	Postal code:
Mobile telephone:		
Home telephone:		
Applicant's e-mail (mandatory):		

Recruiter or agent name (if applicable):
Recruiter's e-mail:
Recruiter's address:
Address 2:
City:
Region/State/Province:
Postal code:
Country:

EMERGENCY CONTACT

Name:	Relationship:
Address:	
Home telephone:	
Mobile telephone:	
E-mail:	

Agent Stamp Here

SELECT YOUR ROUTE TO AUBURN

<input type="checkbox"/> Integrated Accelerator Program (2 semesters)
<input type="checkbox"/> Academic Accelerator Program (2 semesters)
<input type="checkbox"/> Extended Accelerator Program (3 semesters)
<input type="checkbox"/> Pre-Sessional English

INTENDED MAJOR

Write in Major: _____

INTENDED START DATE

Indicate year and semester you wish to start:

Year:	<input type="checkbox"/> August (Fall)	<input type="checkbox"/> January (Spring)	<input type="checkbox"/> May (Summer)
-------	--	---	---------------------------------------

EDUCATION DETAILS

English Proficiency

IELTS Band (total) Score:			
Date taken or scheduled (D/M/Y):			
IELTS Section Scores:	(R):	(W):	(S): (L):
TOEFL Total Score:			
Date taken or scheduled (D/M/Y):			
TOEFL Subtest Scores:	(R):	(W):	(S): (L):
Native language:		Years of English study:	
Have you taken another English-language exam? <input type="checkbox"/> Yes <input type="checkbox"/> No If yes, please provide copies of results with application.			

Education History (postsecondary and further education)

Name of secondary school attended:	
City of secondary school:	
Country of secondary school:	
From (D/M/Y):	To (D/M/Y):
Anticipated date of secondary school graduation:	
Have you attended additional secondary schools? <input type="checkbox"/> Yes <input type="checkbox"/> No If yes, please provide transcripts with application.	
Language of instruction:	

Name of postsecondary school attended:
City of postsecondary school:
Country of postsecondary school:
From (D/M/Y) to (D/M/Y):
Anticipated date of graduation/transfer:
Language of instruction:
Have you attended additional postsecondary institutions? <input type="checkbox"/> Yes <input type="checkbox"/> No If yes, please provide transcripts with application.

Form I-20

Do you have a Form I-20 from another institution in the United States?
<input type="checkbox"/> Yes <input type="checkbox"/> No <input type="checkbox"/> Expired
If "Yes" or "Expired," please provide a copy with your application materials.

EDUCATION DETAILS (CONTINUED)

Advanced Tests (if applicable)

SAT Total Score:		SAT Date (M/Y):	
CR:	Math:	Writing:	
ACT Scores:		ACT Date (M/Y):	
Science:	Math:	English:	ELA:
Other Test:		Other Test Date (M/Y):	

TRANSFER INFORMATION

Required if transferring from another educational institution in the United States.

City/State: _____

From D/M/Y to D/M/Y: _____

Degree earned: _____

School transferring: _____

SEVIS #: _____

DEPENDENTS

Do you have dependents that you would like to add to your I-20?

☐ Yes ☐ No

AIRPORT RECEPTION

Do you require airport pickup? After you book your travel, please visit [auburnglobal.org/flight](#) and enter your arrival details and flight information.

☐ Yes ☐ No

MEDICAL INSURANCE REQUIREMENT

(This section must be completed.)

☐ I understand Auburn Global will provide a required 12 months of medical coverage upon my arrival in the United States, at a cost of \$1,980 USD. At the end of 12 months, I will be required to extend the initial coverage. This fee changes annually and is correct at the time of printing.

SPONSORED STUDENTS

Please indicate if any part of your education will be sponsored.

Type of sponsorship (for example: tuition, fees, living expenses, other):
Name of sponsoring organization:

OTHER INFORMATION

How did you first learn about Auburn University?

- ☐ Exhibition or seminar
- ☐ Newspaper or magazine
- ☐ Recommendation from friend or colleague
- ☐ Recommendation from recruiter

Name: _____

- ☐ Internet search or advertisement
- ☐ Recommendation from family member

ADDITIONAL APPLICATION MATERIALS REQUIRED

- ☐ Copy of passport (if available)
- ☐ Copy of academic transcript
- ☐ Copy of official English assessment score report
- ☐ Copy of bank statements

Please note: Accepted students must bring original copies of all materials when arriving on campus.

PERSONAL STATEMENT

1. Have you ever been subject to disciplinary action, or do you currently have a disciplinary charge pending by any educational institution for academic misconduct, such as cheating? (You do not need to disclose any academic dismissal, suspension, or probation that was due to poor grades.)

☐ Yes ☐ No

2. Have you ever been subject to disciplinary action, or do you currently have a disciplinary charge pending by any educational institution for behavior misconduct, such as fighting?

☐ Yes ☐ No

3. Have you ever been convicted of, or charged with, a criminal offense, or are you currently the subject of a criminal proceeding?

☐ Yes ☐ No

If you have answered “yes” to either of the above questions, please submit a separate sheet that gives the circumstances and approximate date of each incident.

DECLARATION

I declare that the information I have supplied on this form is complete and correct. I understand that giving false or incomplete information may lead to the refusal of my application or cancellation of enrollment and/or loss of visa status.

I have read and understand the published course information in the brochure or website, and I have sufficient information about Auburn University and Auburn Global, including the Undergraduate Accelerator, to make an informed enrollment decision.

I give Auburn University and Auburn Global permission to obtain official records from any educational institution attended by me. I give Auburn University permission to provide Auburn Global with any information pertaining to my application of study, my ongoing academic progress, and my results and attendance for the purposes of evaluating my admissibility and progression status.

I grant Auburn University and the Auburn Global program permission to provide my parent(s), guardian(s), sponsor, and recruiter with ongoing information pertaining to my application to study, and my education records, including ongoing academic progress, results, attendance, and disciplinary record, for the purpose of facilitating family communications about the university experience.

I understand that after I commence my studies with Auburn Global, I will need to successfully complete the program and meet the minimum required progression standards before I can continue my studies at Auburn University.

I understand that as an Undergraduate Accelerator or Pre-Sessional student, I am required to live in one of Auburn Global's on- or off-campus residences and have a Tiger Dining meal plan.

I understand that tuition and fees may change without notice. I accept responsibility for payment of all relevant tuition and fees, and I agree to abide by the Auburn Global refund policy.

I understand that living expenses in the United States may be higher than in my own country, and I confirm that I have the financial ability to meet these costs.

I have read and understand the published program terms and conditions and understand that the most updated copy may be found at [auburnglobal.org/terms-and-conditions](#).

APPLICANT’S SIGNATURE

Date (D/M/Y):

PARENT OR GUARDIAN SIGNATURE (if applicant is under 18)

Date (D/M/Y):

APPLICATION SUBMISSION

Scan and e-mail completed application to [admissions@auburnglobal.org](#).

OFFICE USE ONLY

Application received:
Application number:



ENTRY REQUIREMENTS BY COUNTRY.



Unsure about your scores? Contact Auburn Global at admissions@auburnglobal.org.

Country	Academic Entry Requirements	EAP and AAP	IAP
United States	Successful graduation of year 12 and completion of college preparatory curriculum	2.5	3.0
Angola	Certificado de Habilitações Literárias	12	14
Argentina	Bachiller	6.5	7
Australia	Australia Year 12 certificates and grades; certificate type may vary by state and territory	C+/65%	B/70%
Bahrain	Tawjahiya Secondary School Certificate	55%	60%
Bangladesh	Higher Secondary Certificate (HSC)	40-49%	50-59%
Botswana	Botswana General Certificate of Secondary Education	SC, SD, or C Avg	SC, FD, or B Avg
Brazil	Certificado de Concuseo de Segundo Grau	6/10	7/10
Brunei	Brunei-Cambridge Certificate of Education Ordinary Level	BO Level C+	BO Level B
Cambodia	Baccalauréat	65%	70%
Canada	Grade averages will be assessed according to provincial variations and admission requirements for your program of study	68%	73%
Chile	Licencia de Educacion Media	4.75	5.25
China	Earned an Upper Middle School Graduation Certificate (Gao San*)	70%	78%
Colombia	Bachiller or Bachillerato or Titulo de Bachiller Academico	7/10 3.5/5	8/10 3.7/5
Ecuador	Bachillerato or Titulo de Bachiller	7/10	7.5/10
Egypt	Thanaweya Amma or General Secondary Education Certificate with a 64% or pass	64%	70%
Fiji	Fiji School Leaving Certificate or Form 7 Certificate with a 6 average or higher	6 Avg	5 Avg
France	Baccalauréat Général	11	12
GCE	5 college preparatory subjects passed; students must also show transcripts demonstrating a minimum of eleven years of education and meet the minimum age requirement of the university	D	N/A
GCSE/IGSCE	Equivalent UCAS points in a combination of AS- and A-level results	80	120
Ghana	West African School Certificate or Senior Secondary School Certificate Examination with a minimum score in five subjects	C6	B4
Hong Kong	HKDSE in Liberal Studies; if applicable, O and A level in at least five academic subjects; with Math and two or three additional electives	LS-3, M-2, and two add'l subs	LS-4, M-3, and two add'l subs
India	Years 10 and 12 exams	50%	55%
Indonesia	Surat Tanda Tanat Belajar (STTB) or Sekolah Menengah Umum Tingkat Atas (SMA) in 5 academic subjects	6	7.5
International Baccalaureate	Completion with an overall average or subject score in each subject	24/4.0	26/5.0
Iran	Peesh-daneshgahii Diplome (High School Diploma)	13	14
Israel	Teudat Bagrut (Matriculation Certificate)	65%	70%
Japan	Kotogakko Sotsugyo Shosho (Upper Secondary School Leaving Certificate)	3.5	4
Jordan	Tawjihi -Academic (General Secondary Education Certificate)	65%	70%
Kazakhstan	Attestat	3.5	4
Kenya	Kenya Certificate of Secondary Education (KCSE)	C+/7	B-/8
Korea, Republic of (South Korea)	Inmungye Kodung Hakkyo (High School Certificate) with an average weighted rank Korean GED	1-5 77%	1-4 82%
Kuwait	Shahadat Al-Thanawiya-Al-A'ama (Secondary School Diploma) with an average in academic courses	75%	80%
Laos	Baccalaureat II	13.9 or higher	14.6 or higher
Macau	Senior Secondary Certificate	55% or 11 higher	60% or 12 higher

*Gao Kao is not required for admission into the UAP.

Country	Academic Entry Requirements	EAP and AAP	IAP
Malaysia	SPM Sijil Pelajaran Malaysia (Certificate of Education) with a B or higher Unified Education Certificate (UEC) STPM Sijil Tinggi Persekolahan Malaysia (Advanced Certificate of Education)	4 C6 C+	3 B4 B-
Mauritius	See GCE criteria	GCE	GCE
Mexico	Certificado de Bachillerato (Baccalaureate Certificate)	7	8
Mongolia	School Leaving Certificate (Gerchilgee) after 12 years	79/C+	83/B
Myanmar	Basic Education Standard Exam Diploma A (Academic)	3/49%	4/55%
Nepal	Higher Secondary Certificate (HSC) with 45% (second division) or higher	45%	50%
Nigeria	West African School Certificate or Nigerian Exam Council exam (NECO) with a minimum score in five subjects	C6	B4
Oman	Thanawiya Amma (General Secondary School Certificate)	70%	80%
Pakistan	Higher Secondary Certificate (HSC)	45%	50%
Panama	Diploma de Bachiller	3.5/75%	4.0/81%
Peru	Bachillerato Academic or Certificado de Educacion Secundaria Comun Completa	12/20	13/20
Philippines	High School Diploma	80%/C+	85%/B
Qatar	Al-Thanawiya Aama Qatari (General Secondary School Certificate)	69%	74%
Russia	Attestat o srednem (polnom) obschem obrazovanii [Certificate of (Complete) General Secondary Education]	3.5	4
Saudi Arabia	Shahadat Al-Marhat Al-Thanawiiyyat (General Education Secondary Certificate) in the Natural Sciences track	75%	80%
Singapore	Singapore Cambridge GCE O Level — five academic subjects or GCE A Level with three subjects	D or higher	C or higher
South Africa	Senior Certificate with Matriculation Endorsement	D/55%	C/60%
Sri Lanka	Sri Lanka Collegiate GCE A Levels with passes in three subjects and Senior Secondary School GCE O Levels with five subject passes	C/55%	B/65%
Sweden	Avgångsbetyg/Slutbetyg fran Gymnasieskola (Certificate from Upper Secondary School) with 5 academic subjects	G/60%	VG-G/70%
Switzerland	Eidgenössisches Maturität, Maturité fédérale, Baccalauréat or Maturità federale/ Eidgenössisch anerkannte Kantonale Maturität or Maturité cantonal reconnu par la Confédération/Maturità cantonale riconosciuta dalla Confederazione	5/10 4/6 3/4	7/10 5/6 2/4
Taiwan	Senior High School Diploma or certificate of graduation	65%	70%
Tanzania	Certificate of Secondary Education (CSE)	E/5	D/4
Thailand	Mathayom VI (Secondary) Certificate/M6	65%	70%
Turkey	Lise Diplomasi (Secondary School [Lyceum] Diploma)	3.5/65%	4/70%
UAE	Tawjihiyya (General Secondary Education Certificate)	70%	80%
Uganda	Uganda Advanced Certificate of Education with a minimum of two Principal Passing grades of D or higher and at least one subsidiary pass in a college preparatory subject; in addition, Uganda Certificate of Education with a C (7) average or higher or General Certificate of Education Level (O Level) Examination Certificate with 5 academic subjects passed is required	C7	B5
Ukraine	Attestat Certificate of Complete General Secondary Education or Matriculation Certificate	3.5/6	4/8
United Kingdom	See GCE criteria	GCE	GCE
Vietnam	Baccalaureat II (Bằng Tốt Nghiệp Trung học Phổ thông or Bằng Tốt nghiệp Bổ túc Văn hóa)	6.25	7
West African School Certificate	Completion with a minimum of five subjects	C6	B4
Zambia	Zambian School Certificate Examination with five subjects	C6	B4
Zimbabwe	Zimbabwe School Certificate with five subjects passed	C	B

PROGRESSION REQUIREMENTS BY MAJOR.

Area of Study	Requirements
College of Agriculture	
Agricultural Business & Economics	2.0 GPA, “C” or better in ECON 2020
Agricultural Communications	3.0 in JRNL 1100
Agronomy & Soils — Business Track	2.0 GPA
Agronomy & Soils — Production Track	2.0 GPA
Agronomy & Soils — Science Track	2.0 GPA
Agronomy & Soils — Soil, Water & Land Use Option	2.0 GPA
Agronomy & Soils — Turfgrass Track	2.0 GPA
Animal Sciences — Equine Science Option	2.0 GPA
Animal Sciences — Muscle Foods Option	2.0 GPA
Animal Sciences — Production Management Option	2.0 GPA
Biosystems Engineering	2.0 GPA
Biosystems Engineering — Ecological Engineering Option	2.0 GPA
Biosystems Engineering — Forest Engineering Option	2.0 GPA
Environmental Science	2.0 GPA
Fisheries & Allied Aquacultures	2.0 GPA
Fisheries & Allied Aquacultures — Pre-Professional Option	2.0 GPA
Horticulture — Fruit & Vegetable Production Emphasis	2.0 GPA
Horticulture — Landscape Horticulture Emphasis	2.0 GPA
Horticulture — Nursery & Greenhouse Science Emphasis	2.0 GPA
Horticulture — Pre—Landscape Architecture Emphasis	2.0 GPA
Poultry Science — Food Science	2.0 GPA
Poultry Science — Poultry Processing & Products	2.0 GPA
Poultry Science — Poultry Production	2.0 GPA

College of Architecture, Design & Construction

Enrollment in the second—year studios is limited and eligibility for acceptance to Architecture and Interior Architecture is based on performance in courses in the first year of the model curriculum. For more detailed information on progression to architecture programs, see cadc.auburn.edu/architecture/architecture—degrees—programs.

Architecture — Summer Design	Top 60 students accepted per year; 30—35 from Foundation and Summer Design
Architecture/Interior Architecture — Summer Design	3.0 GPA in studio coursework
Building Science	120 students accepted per year
Environmental Design	2.0 GPA
Environmental Design — Pre—Landscape Architecture	2.0 GPA
Graphic Design	45 students accepted per year
Industrial Design	45 students accepted per summer

Raymond J. Harbert College of Business

Accountancy	2.0 GPA
Aviation Management	2.0 GPA
Business Administration	2.0 GPA
Business Analytics	2.0 GPA
Entrepreneurship & Family Business	2.0 GPA
Finance	2.0 GPA
Human Resources Management	2.0 GPA
Information Systems Management	2.0 GPA
International Business	2.0 GPA
Management	2.0 GPA

Area of Study	Requirements
Raymond J. Harbert College of Business (continued)	
Marketing	2.0 GPA
Professional Flight Management	2.0 GPA
Supply Chain Management	2.0 GPA

College of Education

Additional requirements for all teacher education majors include: Completion of 45 semester—hours in the program; satisfactory completion or current enrollment in the orientation course; minimum 2.50 grade—point average on all college coursework attempted, as well as all coursework attempted at Auburn, in professional studies, and in the teaching field; satisfactory performance in the preteaching experience; a passing score on each of the Basic Skills Assessments (Applied Mathematics, Reading for Information, and Writing); documenta- tion of a clear background check; and satisfactory completion of a professional interview. For more information, see education.auburn.edu/academic_departments/curr/academics.

Agriscience Education	2.0 GPA for pre-program
Business & Marketing Education	2.0 GPA for pre-program
Chemistry Education	2.0 GPA for pre-program
Collaborative Teacher Education	2.0 GPA for pre-program
Early Childhood Education	2.0 GPA for pre-program; 2.5 GPA overall; interview; 75 students accepted per year
Early Childhood Special Education	2.0 GPA for pre-program
Elementary Education	2.0 GPA for pre-program; 2.5 GPA overall; interview; 75 students accepted per year
English Language Arts Education/English	2.0 GPA for pre-program
Exercise Science	2.0 GPA for pre-program; 2.5 GPA overall; interview; 75 students accepted per year
Fitness, Conditioning & Performance	2.0 GPA
Foreign Language Education — French	2.0 GPA for pre-program
Foreign Language Education — German	2.0 GPA for pre-program
Foreign Language Education — Spanish	2.0 GPA for pre-program
General Science Education/Biology	2.0 GPA for pre-program
General Social Science Education/History	2.0 GPA for pre-program
Mathematics Education	2.0 GPA for pre-program
Music Education/Instrumental & Vocal	2.0 GPA for pre-program
Physical Activity & Health	2.0 GPA; see Fitness, Conditioning & Performance
Physical Education/Teacher Education	2.0 GPA for pre-program
Physics Education	2.0 GPA for pre-program
Rehabilitation & Disability Studies	2.0 GPA

Samuel Ginn College of Engineering

Aerospace Engineering	2.2 GPA in pre—engineering curriculum
Biosystems Engineering	2.2 GPA in pre—engineering curriculum
Biosystems Engineering — Ecological Engineering Option	2.2 GPA in pre—engineering curriculum
Biosystems Engineering — Forest Engineering Option	2.2 GPA in pre—engineering curriculum
Chemical Engineering	2.2 GPA in pre—engineering curriculum
Civil Engineering	2.2 GPA in pre—engineering curriculum
Computer Science	2.2 GPA in pre—engineering curriculum
Electrical Engineering	2.2 GPA in pre—engineering curriculum
Electrical Engineering — Computer Engineering Option	2.2 GPA in pre—engineering curriculum
Industrial & Systems Engineering	2.2 GPA in pre—engineering curriculum
Materials Engineering	2.2 GPA in pre—engineering curriculum
Mechanical Engineering	2.2 GPA in pre—engineering curriculum
Software Engineering	2.2 GPA in pre—engineering curriculum
Wireless Engineering — Hardware Option	2.2 GPA in pre—engineering curriculum
Wireless Engineering — Software Option	2.2 GPA in pre—engineering curriculum

PROGRESSION REQUIREMENTS BY MAJOR.

Area of Study	Requirements
School of Forestry & Wildlife Sciences	
Forestry	2.0 GPA
Natural Resources Management Forestry	2.0 in prerequisite courses
Wildlife Ecology & Management	2.0 GPA
College of Human Sciences For more information, see humsci.auburn.edu/acad/majors .	
Apparel Merchandising, Design & Production Management Apparel Design & Product Management Option	2.0 in prerequisite course; overall 2.8 GPA
Apparel Merchandising, Design & Production Management Apparel Merchandising Option	2.0 in prerequisite course; overall 2.8 GPA
Global Studies in Human Sciences	2.0 GPA
Hotel & Restaurant Management	2.0 GPA; 600 hours of work experience as a prerequisite for internship
Human Development & Family Studies	2.25 GPA for internship; background check
Interior Design	2.0 in pre-requisite courses; portfolio application; 36 students accepted per year
Nutrition - Nutrition/Dietetics Option	2.0 in pre requisite course; overall 2.8 GPA
Nutrition - Nutrition Science Option	2.0 GPA
Nutrition - Wellness Option	2.0 GPA
College of Sciences & Mathematics	
Actuarial Science	2.0 GPA
Applied Discrete Mathematics	2.0 GPA
Applied Mathematics	2.0 GPA
Biochemistry	2.0 GPA
Biomedical Sciences	2.0 GPA
Chemistry, BA	2.0 GPA
Chemistry, BS	2.0 GPA
Geography	2.0 GPA
Geology	2.0 GPA
Laboratory Technology	2.0 GPA
Marine Biology	2.0 GPA
Mathematics	2.0 GPA
Microbial, Cellular & Molecular Biology - Cell & Molecular Biology Option (MCCM)	2.0 GPA
Microbial, Cellular & Molecular Biology - Microbiology Option (MCMB)	2.0 GPA
Organismal Biology - Conservation & Biodiversity Option	2.0 GPA
Organismal Biology - Ecology, Evolution & Behavior Option	2.0 GPA
Organismal Biology - Integrated Biology Option	2.0 GPA
Physics	2.0 GPA
University College	
Interdisciplinary Studies	2.0 GPA or 2.2 in the most recent semester's coursework at Auburn University
School of Nursing	
Nursing - Traditional	Unadjusted 2.5 GPA and 2.0 or better in all prenursing courses; competitive admission

Area of Study	Requirements
College of Liberal Arts See cla.auburn.edu/cla/student-services/cla-departmental-admissions-processes .	
Anthropology	2.0 GPA
Art	2.0 GPA
Art History	2.0 GPA
Art - Studio/Fine Arts	24 hours of Studio Art and Art History; portfolio review
Communication	2.3 GPA in ENGL 1100, ENGL 1120, and the University-required core social science courses
Communication Disorders	30 hours of University-required core courses; minimum B average in freshman English composition sequence; 30 applicants accepted twice per year
Economics - Primary Track	2.0 GPA
Economics - Quantitative Track	2.0 GPA
English - Creative Writing	2.0 GPA
English - Literature	2.0 GPA
English - Professional & Public Writing	2.0 GPA
French	2.0 GPA
French International Trade	2.0 GPA
German	2.0 GPA
German International Trade	2.0 GPA
Health Services Administration	2.3 GPA in ACCT 2110, MATH 1680 or MATH 1610, and HADM 3000; competitive
History	2.0 GPA
Journalism	2.3 GPA in ENGL 1100, ENGL 1120, and the University-required core social science courses
Media Studies	2.3 GPA in ENGL 1100, ENGL 1120, and the University-required core social science courses, including COMM 1000
Media Studies - Visual Media Option	30 hours of coursework; COMM 1000 with a B or better and earn a minimum 2.3 GPA in ENGL 1100 and core social science
Music	Performance audition; limited space
Music Performance - Instrumental	Performance audition; limited space
Music Performance - Piano	Performance audition; limited space
Music Performance - Voice	Performance audition; limited space
Philosophy	2.0 GPA
Political Science	2.0 GPA
Public Administration	2.0 GPA
Public Relations	3.0 in JRNL 1100, 2.3 GPA in ENGL 1100, ENGL 1120, and the University-required core social science courses
Psychology	2.0 GPA
Spanish	2.0 GPA
Spanish International Trade	2.0 GPA
Social Work	2.0 in SOCY 1000, SOWO 2000, and SOWO 3910; overall 2.5 GPA
Sociology	2.0 GPA
Theatre	2.0 in all theatre courses
Theatre - Design / Technology	2.0 in all theatre courses
Theatre - Music Theatre	2.0 in all theatre courses
Theatre - Performance	2.0 in all theatre courses; audition before end of sophomore year
Theatre - Production & Management	2.0 in all theatre courses





CONTACT US:

Auburn Global
332 James E. Foy Hall
Auburn University
Auburn, AL 36849
t: +1 (334) 844-5753
o: +1 (334) 844-5753



auburnglobal.org



[/AuburnGlobal](https://twitter.com/AuburnGlobal)



[/AuburnUniversity](https://www.youtube.com/AuburnUniversity)



ocm.auburn.edu/webcams



[/AuburnGlobal](https://www.facebook.com/AuburnGlobal)



[/AuburnGlobal](https://www.instagram.com/AuburnGlobal)



[iTunes.auburn.edu](https://itunes.apple.com/AuburnU)



[/AuburnU](https://www.pinterest.com/AuburnU)

auburnglobal.org

Auburn University is an equal-opportunity educational institution/employer.